

8. TRANSPORT & COMMUNICATION

Length of Road (Kms.)	2013	2014	2015
Dzongkhag roads	53	53	143
Thromde roads			
Gewog connectivity roads	143.2	143.2	143.2
Farm roads	301	342	388
Forest roads	0	0	0
Motorable bridges (Nos.)	7	7	7
Non-motorable bridges (Nos.)	11	11	11
Telephone connections (Nos.)	487	450	414
Internet lease line connections (Nos.)
Internet broadband connection (Nos.)
Cable TV operators	2	2	2
Taxis (Nos.)
Buses operating (Nos.)	0	0	0

9. TRADE & INDUSTRIES (Nos.)

	2013	2014	2015
Trade, hotels and restaurants	16	18	18
Industries
Constructions

10. TOURISM (Nos.)

	2013	2014	2015
Tourists visited	84	96	68

11. ELECTRICITY

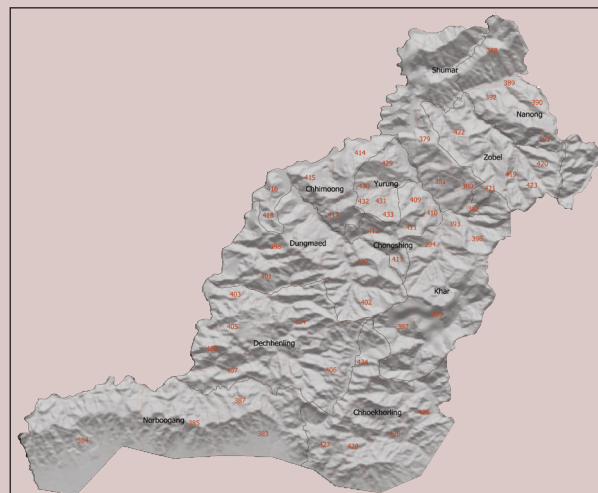
	2013	2014	2015
Households electrified (%)	93	97	98
Units consumed (MU)	0	0	0

12. RELIGION & CULTURE (Nos.)

	2013	2014	2015
Religious institutions	2	2	2
Religious monuments	121	121	121

13. PUBLIC FINANCE-

Financial Year (Mill. Nu.)	2013	2014	2015
	2012-13	2013-14	2014-15
Budget outlay		...	
Current		805.332	
Capital	603.39	603.39	634.52
Expenditure	342.46	260.93	302.39
Current	260.93	342.46	332.14
Capital			



PEMA GATSHEL

Dzongkhag at a Glance

2016

National Statistics Bureau
 Post Box No. 338, Thimphu : Bhutan
 Tel: +975-2-333296/325402/322753 Fax: +975-2-323069 www.nsb.gov.bt
 ISBN 978-99936-28-39-2
 Data source: Dzongkhag Statistics Section

1. GENERAL**Geographical Characteristics**

Area (sq. km)	1,022
Altitude (masl.)	500-3,000+

Administrative Tiers (Nos.)

Dungkhags	1
Gewogs	11
Chiwogs	56
Villages	246
Gungtong	746

2. POPULATION

	2013	2014	2015
Total	24,646	24,919	25,426
Male	12,153	12,267	12,514
Female	12,493	12,652	12,912
Population density (per sq. km)	24	24	25

3. POVERTY RATE (TERMINAL)

Consumption poverty rate (%)	26.9
Multi-dimensional poverty rate (%)	11.6

4. HEALTH**Infrastructure (Nos.)**

	2013	2014	2015
Hospitals	1	1	1
Indigenous units	4	4	4
Basic health units (BHUs)	0	0	0
BHU I	1	1	1
BHU II	11	11	11
Outreach clinics			
With sheds	32	32	32
Without sheds	4	4	4
Ambulance	5	5	6

Health Personnel (Nos.)

Doctors	2	2	2
Dungtshos (Indigenous Doctor)	1	1	1
Sowai Menpa (Indigenous Medical Technicians)	4	4	4
Nurses	12	12	15
Technicians	15	20	20

Health Indicators

Infant mortality rate (Per 1,000 live births)	...	6	11
---	-----	---	----

Crude birth rate (Per 1,000 population)	...	20	17
Crude death rate (Per 1,000 population)	...	5	5
Maternal mortality rate (%)	...	2	0
Doctors per bed	10	10	6
Birth attended by trained personnel (%)	...	75	80
Under one immunization coverage (%)	100	100	100

Sanitation

Rural water supply coverage (%)	100	100	100
Rural population access to safe drinking water supplies (%)	...	97	97
Rural population access to improved sanitation (%)	...	98	98

5. EDUCATION**Number of educational institutes (Includes pvt. schools-Nos)**

	2013	2014	2015
Tertiary institute under RUB			
Central schools	0	0	1
Higher secondary schools	2	2	2
Middle secondary schools	1	2	2
Lower secondary schools	6	5	5
Primary schools	17	17	14
Extended class room	9	9	10
Non formal education centres	32	41	63
ECCD	5	7	8
Other institutes

Educational Indicators (Includes pvt. schools)

School enrolment (Nos.)	6,434	6,182	6,125
Male	3,280	3,142	3,086
Female	3,154	3,040	3,039
Teachers (Nos.)	349	377	350
Male	254	277	245
Female	95	100	105
Pupil-teacher ratio	19:1	16:1	15:1
NFE instructors	32	41	63
Male	8	10	20
Female	24	31	43
NFE learners (Nos.)	303	402	612
Male	68	90	121
Female	235	312	491

6. AGRICULTURE

	2013	2014	2015
Land Registration by Type			
Dry land (acres)	8,392	11,890	...
Wet land (acres)	45	64	...
Orchard (acres)	...	2,335.4	...
Irrigation channels (kms)	...	25.07	...
Functional	...	1.94	...
Non-functional	...	23.13	...
Power tillers (Nos.)	37	42	53
Agriculture extension centres	10	11	11
Agriculture seed production farms	0	0	0
Electric fencing (Nos.)	5	8	14
Electric fencing (kms.)	19.2	26	47.22
Farm sales shops (Nos.)	0	8	8

Renewal Natural Resources (RNR)

RNR extension centres (Nos.)	13	13	13
------------------------------	----	----	----

Livestock (Nos.)

Veterinary hospitals	1	1	1
Livestock extension centres	13	13	13
Regional veterinary laboratories	0	0	0
Fishery farms	1	2	3
Poultry farms	24	26	28
Milk processing unit	3	5	5
Piggery farms	14	14	19

Forestry

Territorial division HQs	0	0	0
Range offices	2	2	2
Beat offices	3	3	3
Community forest (acres)			
Nursery (Nos.)	4	4	4
Forest cover (%)	87.7	87.7	87.7
Protected areas (acres)

7. EMPLOYMENT

	2013	2014	2015
Labour force (Nos.)	15,273	14,742	15,266
Male	7,370	7,622	7,862
Female	7,903	7,120	7,404
Un-employed (Nos.)	42	119	26
Population involved in agriculture (%)	82	72	77
Un-employment rate	0	1	0
Labour force participation rate	76	63	67