

## 8. TRANSPORT & COMMUNICATION

	2014	2015	2016
Length of Road (Kms.)			
Dzongkhag roads	40.7	40.7	40.7
Thromde roads	8.7	8.7	11.475
Gewog connectivity roads	79	79	79
Farm roads	151	173.8	181.62
Forest roads	8.5	8.5	8.5
Motorable bridges (Nos.)	3	3	3
Non-motorable bridges (Nos.)	10	10	10
Telephone connections (Nos.)	159	173	172
Internet lease line connections (Nos.)	1	7	7
Internet broadband connection (Nos.)	94	114	120
Cable TV operators	1	2	2
Taxis (Nos.)	51	51	60
Buses operating (Nos.)	4	4	4

## 9. TRADE & INDUSTRIES (Nos.)

	2014	2015	2016
Trade, hotels and restaurants	21	25	31
Industries	265	349	474
Constructions	104	132	272

## 10. TOURISM (Nos.)

	2014	2015	2016
Tourists visited	672	937	792

## 11. ELECTRICITY

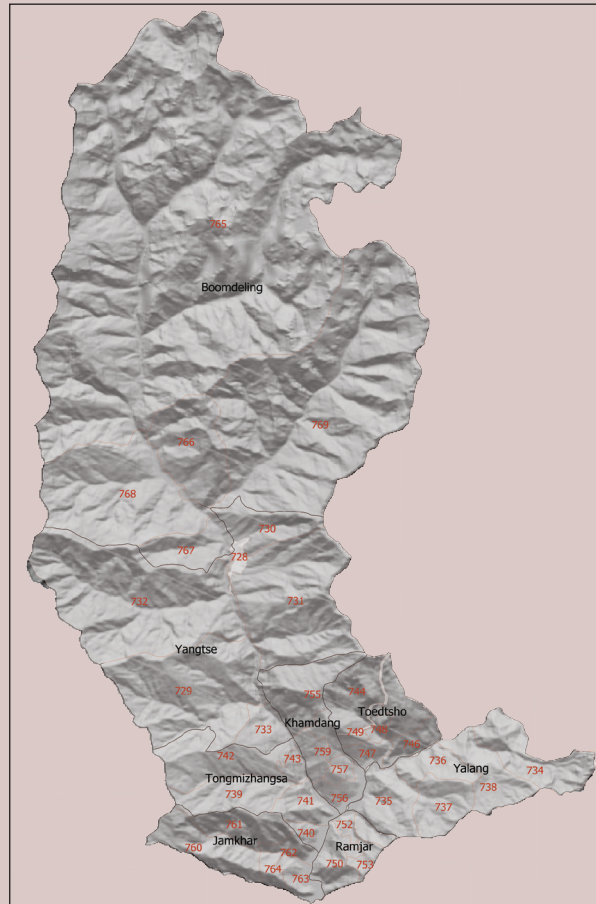
	2014	2015	2016
Households electrified (%)	99.5	99.9	99.9
Units consumed (MU)	4,414,039	4,880,801	5,347,564.97

## 12. RELIGION & CULTURE (Nos.)

	2014	2015	2016
Religious institutions	9	9	9
Religious monuments	504	504	504

## 13. PUBLIC FINANCE-Financial Year (Mill. Nu.)

	2013/14	2014/15	2015/16
Budget outlay	380.124	392.84	628.195
Current	224.871	246.44	316.948
Capital	155.253	146.4	311.247
Expenditure	359.511	367.769	594.873
Current	220.702	242.783	300.739
Capital	138.809	124.986	294.134



National Statistics Bureau  
 Post Box No. 338, Thimphu : Bhutan  
 Tel: +975-2-333296/325402/322753 Fax: +975-2-323069 www.nsb.gov.bt  
 ISBN 978-99936-28-46-0  
 Data source: Dzongkhag Statistics Section



# TRASHIYANGTSE

## Dzongkhag at a Glance

### 2017

## 1. GENERAL

Geographical Characteristics	2014	2015	2016
Area (sq. km)	1437.8	1437.8	1438.8
Altitude (masl.)	500-5400	500-5400	500-5401

Administrative Tiers (Nos.)	2014	2015	2016
Dungkhags	0	0	0
Gewogs	8	8	8
Chiwogs	41	41	41
Villages	117	117	117
Gungtong	740	740	740

## 2. POPULATION

	2014	2015	2016
Total	20574	20874	20874
Male	10150	10286	10286
Female	10424	10588	10588
Population density (per sq. km)	14	14	14

## 3. POVERTY RATE (TERMINAL)

	2014	2015	2016
Consumption poverty rate (%)	13.5	13.5	13.5
Multi-dimensional poverty rate (%)	14	14	14

## 4. HEALTH

Infrastructure (Nos.)	2014	2015	2016
Hospitals	1	1	1
Indigenous units	2	2	2
Basic health units (BHUs)			
BHU I	1	1	1
BHU II	9	9	9
Outreach clinics			
With sheds	26	25	25
Without sheds	2	2	2
Ambulance	3	3	3

Health Personnel (Nos.)	2014	2015	2016
Doctors	2	3	3
Dungtshos (Indigenous Doctor)	1	1	1
Sowai Menpa (Indigenous Medical Technicians)	2	2	2
Nurses	12	14	19
Technicians	11	15	19

Health Indicators	2014	2015	2016
Infant mortality rate (Per 1,000 live births)	13	6	2

Crude birth rate (Per 1,000 population)	20.8		
Crude death rate (Per 1,000 population)	4.3		
Maternal mortality rate (%)	0	0	0
Doctors per bed	20	20	20
Birth attended by trained personnel (%)	71		
Under one immunization coverage (%)	100	99	100

Sanitation	2014	2015	2016
Rural water supply coverage (%)	98	98	99
Rural population access to safe drinking water supplies (%)	96.4	98	98
Rural population access to improved sanitation (%)	93	93	93

## 5. EDUCATION

### Number of educational institutes (Includes pvt. schools-Nos)

	2014	2015	2016
Tertiary institute under RUB	0	0	0
Central schools	0	0	2
Higher secondary schools	1	1	0
Middle secondary schools	1	1	1
Lower secondary schools	5	5	5
Primary schools	21	21	20
Extended class room	0	0	0
Non formal education centres	17	17	16
ECCD	15	15	16
Other institutes	1	1	1

### Educational Indicators (Includes pvt. schools)

	2014	2015	2016
School enrolment (Nos.)	4984	4944	4976
Male	2434	2381	2316
Female	2550	2563	2660
Teachers (Nos.)	266	280	334
Male	204	217	270
Female	62	63	66
Pupil-teacher ratio	1:19	1:18	1:15
NFE instructors	18	19	17
Male	3	3	3
Female	15	16	14
NFE learners (Nos.)	221	227	165
Male	42	48	24
Female	179	179	141
Net Primary Enrolment rate (%)	61.4	61.4	61.4
Literacy rate (%)	60.4	60.4	60.4

## 6. AGRICULTURE

### Land Registration by Type

	2014	2015	2016
Dry land (acres)	2400	2400	2400
Wet land (acres)	10813.16	10813.16	10813.16
Orchard (acres)	0.50	0.50	0.50
Irrigation channels (kms)	110.32	153.76	153.76
Functional	110.32	153.76	153.76
Non-functional	0	0	0
Power tillers (Nos.)	41	49	49
Agriculture extension centres	8	8	8
Agriculture seed production farms	1	1	1
Electric fencing (Nos.)	0	18	56
Electric fencing (kms.)	0		170.236
Farm sales shops (Nos.)	0	0	8

### Renewal Natural Resources (RNR)

RNR extension centres (Nos.)	8	8	8
------------------------------	---	---	---

### Livestock (Nos.)

	2014	2015	2016
Veterinary hospitals	1	1	1
Livestock extension centres	8	8	8
Regional veterinary laboratories	0	0	0
Fishery farms	0	0	0
Poultry farms	20	20	175
Milk processing unit	...	...	...
Piggery farms	...	...	...

### Forestry

	2014	2015	2016
Territorial division HQs	0	0	0
Range offices	1	1	1
Beat offices	8	8	8
Community forest (acres)	4546.5	6490.5	6490.5
Nursery (Nos.)	0	2	2
Forest cover (%)	76	76	76
Protected areas (acres)	375607.2	375607.2	375607.2

## 7. EMPLOYMENT

	2014	2015	2016
Labour force (Nos.)	8132	8132	8132
Male	4378	4378	4378
Female	3755	3755	3755
Un-employed (Nos.)	57	57	57
Population involved in agriculture (%)	67.1	67.1	67.1
Un-employment rate	2.8	2.8	2.8
Labour force participation rate	57.2	57.2	57.2