

Livestock (Nos.)

	2014	2015	2016
Veterinary hospitals	1	1	1
Livestock extension centres	1	1	1
Regional veterinary laboratories	1	1	1
Fishery farms	2	2	2
Poultry farms	18	21	40
Milk processing unit	7	10	16
Piggery farms	1	6	6

Forestry

Territorial division HQs	1	1	1
Range offices	3	3	3
Beat offices	2	2	2
Community forest (acres)	553.78	1182.23	1182.2
Nursery (Nos.)	3	3	3
Forest cover (%)	87	87	87
Protected areas (acres)	82716.06	82716.06	82716

7. EMPLOYMENT

	2013	2014	2015
Labour force (Nos.)	18467	17520	
Male	10311	10340	
Female	8156	7180	
Un-employed (Nos.)	486	88	
Population involved in agriculture (%)	11456	66.9	
Un-employment rate	2.6	0.5	
Labour force participation rate	63.4	56.6	

8. TRANSPORT & COMMUNICATION

Length of Road (Kms.)	2014	2015	2016
Dzongkhag roads	41	51.92	51.92
Thromde roads	7.32	7.32	7.32
Gewog connectivity roads			
Farm roads	242.61	303.74	432
Forest roads	11.5	11.66	11.66
Motorable bridges (Nos.)
Non-motorable bridges (Nos.)	27	29	...
Telephone connections (Nos.)	1063	835	747
Internet lease line connections (Nos.)	380	368	373
Internet broadband connection (Nos.)			
Cable TV operators	4	4	4
Taxis (Nos.)	43	44	54
Buses operating (Nos.)	8	9	11

9. TRADE & INDUSTRIES (Nos.)

	2013	2014	2015
Trade, hotels and restaurants	131	158	164
Industries
Constructions	113	99	92

10. TOURISM (Nos.)

	2014	2015	2016
Tourists visited	2,056	2,164	1,782

11. ELECTRICITY

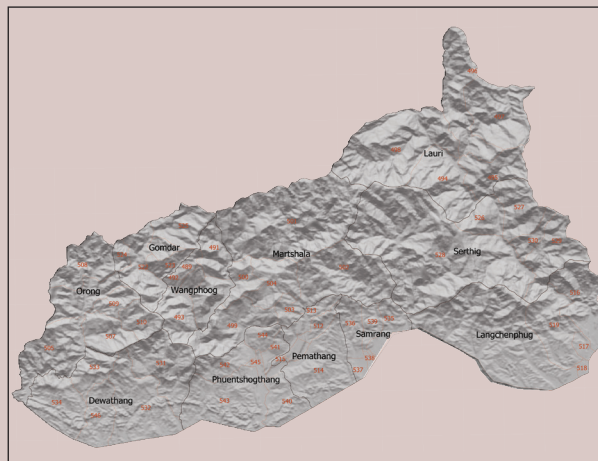
	2014	2015	2016
Households electrified (%)	79.78	98.52	99.50
Units consumed (MU)	130.10	198.99	...

12. RELIGION & CULTURE (Nos.)

	2014	2015	2016
Religious institutions
Religious monuments	515	515	515

13. PUBLIC FINANCE-Financial Year (Mill. Nu.)

	2013/14	2014/15	2015/16
Budget outlay			
Current	303.98	350.48	313.08
Capital	201.56	173.47	197.77
Expenditure			
Current	283.88	343.56	309.38
Capital	191.11	164.24	167.40



National Statistics Bureau

Post Box No. 338, Thimphu : Bhutan

Tel: +975-2-333296/325402/322753 Fax: +975-2-323069 www.nsb.gov.bt

ISBN 978-99936-28-46-0

Data source: Dzongkhag Statistics Section



SAMDRUP JONGKHAR

Dzongkhag at a Glance

2017

1. GENERAL

Geographical Characteristics	2016
Area (sq. km)	1,877.94
Altitude (masl.)	250-1,900

Administrative Tiers (Nos.)	2016
Dungkhags	2
Gewogs	11
Chiwogs	58
Villages	191
Gungtong	299

2. POPULATION

	2014	2015	2016
Total	40097	40766	35059
Male	20466	20786	17811
Female	19631	19980	17248
Population density (per sq. km)	21.4	21.7	18.7

3. POVERTY RATE (TERMINAL) As per PAR 2012

Consumption poverty rate (%)	21
Multi-dimensional poverty rate (%)	16.4

4. HEALTH

Infrastructure (Nos.)	2014	2015	2016
Hospitals	2	2	2
Indigenous units	5	5	5
Basic health units (BHUs)			
BHU I	3	3	3
BHU II	7	7	7
Outreach clinics			
With sheds	28	28	28
Without sheds	4	4	4
Ambulance	9	9	9

Health Personnel (Nos.)

Doctors	4	6	10
Dungtshos (Indigenous Doctor)	1	1	2
Sowai Menpa (Indigenous Medical Technicians)	5	5	5
Nurses	18	36	32
Technicians	26	42	37

Health Indicators

	2014	2015	2016
Infant mortality rate (Per 1,000 live births)	26.00	29.10	35.05

Crude birth rate (Per 1,000 population)	22.10	25.30	17.56
Crude death rate (Per 1,000 population)	3.90	3.80	4.63
Maternal mortality rate (%)	0.00	0.20	0.00
Doctors per bed	0.20	0.10	0.12
Birth attended by trained personnel (%)	79.50	90.80	97.05
Under one immunization coverage (%)	92.30	97.00	100.00

Sanitation

	2014	2015	2016
Rural water supply coverage (%)
Rural population access to safe drinking water supplies (%)	98.60	99.20	99.46
Rural population access to improved sanitation (%)	93.80	96.00	99.31

5. EDUCATION

Number of educational institutes (Includes pvt. schools-Nos)

	2014	2015	2016
Tertiary institute under RUB	0	0	0
Central schools	2	3	4
Higher secondary schools	2	1	1
Middle secondary schools	4	4	3
Lower secondary schools	2	1	1
Primary schools	14	14	13
Extended class room	5	5	5
Non formal education centres	30	34	44
ECCD	10	10	19
Other institutes	0	0	0

Educational Indicators (Includes pvt. schools)

	2014	2015	2016
School enrolment (Nos.)	6786	6737	6683
Male	3394	3309	3303
Female	3392	3428	3380
Teachers (Nos.)	322	319	342
Male	85	230	246
Female	237	89	96
Pupil-teacher ratio	21	21	20
NFE instructors	33	30	45
Male	12	10	20
Female	21	20	25
NFE learners (Nos.)	365	358	430
Male	80	77	100
Female	285	281	330

Samdrup Jongkhar Thromdey

Number of educational institutes (Includes pvt. Nos)

	2014	2015	2016
Tertiary institute under RUB	1	1	1
Central schools	0	0	0
Higher secondary schools	1	1	1
Middle secondary schools	1	1	1
Lower secondary schools	0	0	0
Primary schools	3	3	3
Extended class room	0	0	0
Non formal education centres (NFE)	5	5	4
ECCD	2	3	3
Other institutes	0	0	0

Educational Indicators (Includes private schools)

School enrolment (Nos.)	2412	2194	2039
Male	1147	1050	968
Female	1265	1144	1071
Teachers (Nos.)	102	104	82
Male	47	47	35
Female	55	57	47
Pupil-teacher Ratio	23.65	21.10	24.87
NFE Instructors	5	5	5
Male	1	1	1
Female	4	4	4
NFE learners (Nos.)	87	76	65
Male	8	8	10
Female	79	68	55

6. AGRICULTURE

Land Registration by Type

	2014	2015	2016
Dry land (acres)	15104	15104	15104
Wet land (acres)	2485	2485	2485
Orchard (acres)	1066	1066	1066
Irrigation channels (kms)			
Functional	91	103	42
Non- functional	0	0	0
Power tillers (Nos.)	38	45	68
Agriculture extension centres	0	0	0
Agriculture seed production farms	0	0	0
Electric fencing (Nos.)	6	19	41
Electric fencing (kms.)	20.89	76.4	140.4
Farm sales shops (Nos.)	0	4	5

Renewal Natural Resources (RNR)

RNR extension centres (Nos.)	10	10	10
------------------------------	----	----	----