

8. TRANSPORT & COMMUNICATION

Length of Road (Kms.)	2013	2014	2015
Dzongkhag roads	58.57	58.57	58.57
Thromde roads	28.58	28.58	28.58
Gewog connectivity roads	55.35	72.85	118.85
Farm roads	334.57	334.57	355.43
Forest roads	30.9	30.9	30.9
Motorable bridges (Nos.)	21	21	24
Non-motorable bridges (Nos.)	14	14	14
Telephone connections (Nos.)	3,649	2,763	2,528
Internet lease line connections (Nos.)
Internet broadband connection (Nos.)	925
Cable TV operators	4	4	4
Taxis (Nos.)	1,475	1,192	1,201
Buses operating (Nos.)	57	57	57

9. TRADE & INDUSTRIES (Nos.) 2013 2014 2015

Trade, hotels and restaurants	82	200	...
Industries	19	32	...
Constructions	33	26	...

10. TOURISM (Nos.) 2013 2014 2015

Tourists visited	4,574	4,826	3,846
------------------	-------	-------	-------

11. ELECTRICITY 2013 2014 2015

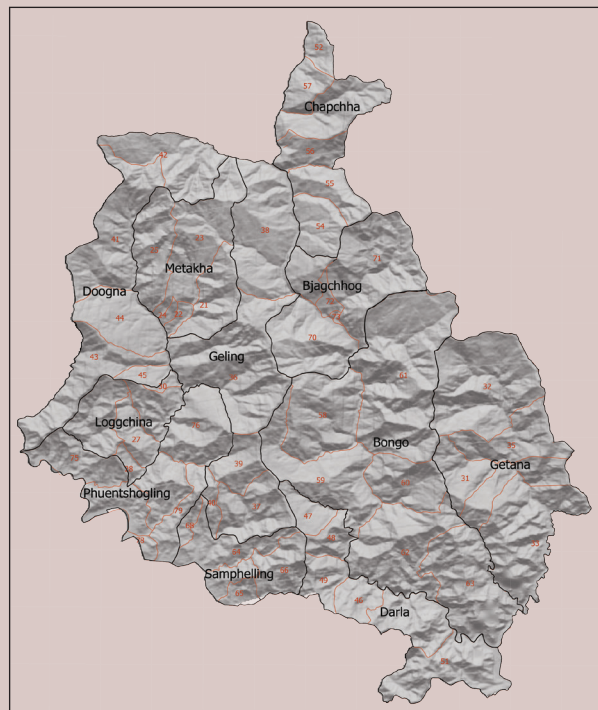
Households electrified (%)	97	99	99
Units consumed (MU)	0	0	0

12. RELIGION & CULTURE (Nos.) 2013 2014 2015

Religious institutions	8	8	8
Religious monuments	231	231	231

13. PUBLIC FINANCE- 2013 2014 2015

Financial Year (Mill. Nu.)	2012-13	2013-14	2014-15
Budget outlay			
Current	455.282	434.646	483.256
Capital	250.298	135.353	79.254
Expenditure			
Current	451.428	394.55	482.13
Capital	245.06	126.328	72.287



CHUKHA

Dzongkhag at a Glance

2016

National Statistics Bureau

Post Box No. 338, Thimphu : Bhutan

Tel: +975-2-333296/325402/322753 Fax: +975-2-323069 www.nsb.gov.bt

ISBN 978-99936-28-39-2

Data source: Dzongkhag Statistics Section

1. GENERAL

Geographical Characteristics

Area (sq. km)	1,879.5
Altitude (masl.)	200-3,500

Administrative Tiers (Nos.)

Dungkhags	1
Gewogs	11
Chiwogs	58
Villages	123
Gungtong	83

2. POPULATION

	2013	2014	2015
Total	85,609	86,991	88,342
Male	48,525	49,280	50,020
Female	37,084	37,711	38,322
Population density (per sq. km)	46	46	47

3. POVERTY RATE (TERMINAL)

Consumption poverty rate (%)	11.2
Multi-dimensional poverty rate (%)	17.6

4. HEALTH

Infrastructure (Nos.)

	2013	2014	2015
Hospitals	3	3	3
Indigenous units	4	4	4
Basic health units (BHUs)	14	16	16
BHU I	13	14	14
BHU II	1	2	2
Outreach clinics	39	44	44
With sheds	24	38	38
Without sheds	15	6	6
Ambulance	9	10	13

Health Personnel (Nos.)

Doctors	17	18	13
Dungtshos (Indigenous Doctor)	4	3	3
Sowai Menpa (Indigenous Medical Technicians)	5	5	5
Nurses	57	59	56
Technicians	23	27	42

Health Indicators

Infant mortality rate (Per 1,000 live births)	32.54	28.11	22.84
---	-------	-------	-------

Crude birth rate (Per 1,000 population)	19.5	23.34	23.32
Crude death rate (Per 1,000 population)	2.97	3.11	2.83
Maternal mortality rate (%)	0	0	0
Doctors per bed	7	8	10
Birth attended by trained personnel (%)	95.75	95.64	97.38
Under one immunization coverage (%)	96	...	93.6

Sanitation

Rural water supply coverage (%)	89.4	93.8	93.5
Rural population access to safe drinking water supplies (%)	92	95.5	96.1
Rural population access to improved sanitation (%)	92.4	96.3	95.4

5. EDUCATION

Number of educational institutes (Includes pvt. schools-Nos)

	2013	2014	2015
Tertiary institute under RUB	2	2	2
Central schools	0	0	0
Higher secondary schools	4	4	5
Middle secondary schools	8	9	8
Lower secondary schools	4	4	4
Primary schools	26	26	26
Extended class room	8	5	5
Non formal education centres	50	67	50
ECCD	8	15	13
Other institutes	0	0	0

Educational Indicators (Includes pvt. schools)

School enrolment (Nos.)	16,947	16,671	16,285
Male	8,352	8,239	8,046
Female	8,595	8,432	8,239
Teachers (Nos.)	534	769	754
Male	313	400	404
Female	221	369	350
Pupil-teacher ratio	32:1	22:1	22:1
NFE Instructors	40	36	35
Male	10	13	13
Female	30	23	22
NFE learners (Nos.)	641	591	572
Male	161	109	109
Female	480	482	463

6. AGRICULTURE

	2013	2014	2015
Land Registration by Type			
Dry land (acres)	12,649.3	12,649.3	12,649.3
Wet land (acres)	4,445.43	4,445.43	4,445.43
Orchard (acres)	3,363.1	3,363.1	3,363.1
Irrigation channels (kms)	64	184.07	194.53
Functional	57	160.07	188.53
Non-functional	7	24	6
Power tillers (Nos.)	7	7	17
Agriculture extension centres	0	0	0
Agriculture seed production farms	0	0	0
Electric fencing (Nos.)	0	0	5
Electric fencing (kms.)	0	0	21
Farm sales shops (Nos.)	0	0	3

Renewal Natural Resources (RNR)

RNR extension centres (Nos.)	11	11	11
------------------------------	----	----	----

Livestock (Nos.)

Veterinary hospitals	1	1	1
Livestock extension centres	1	1	1
Regional veterinary laboratories	1	1	1
Fishery farms	36
Poultry farms	33	38	43
Milk processing unit	1	2	4
Piggery farms	18

Forestry

Territorial division HQs	1	1	1
Range offices	3	3	3
Beat offices	7	7	7
Community forest (acres)	6,996.17	7,552.54	7,552.54
Nursery (Nos.)	7	7	7
Forest cover (%)	85.77	85.77	85.77
Protected areas (acres)	1	1	1

7. EMPLOYMENT

	2013	2014	2015
Labour force (Nos.)	41,286	31,568	36,840
Male	25,139	20,612	22,298
Female	16,147	10,956	14,542
Un-employed (Nos.)	1,835	951	1,834
Population involved in agriculture (%)	24.5	24.7	35.8
Un-employment rate	4.4	3	5.0
Labour force participation rate	65.2	51.6	61.7