

Dzongkhag Roads	155.7	155.7	155.7
Thromde Roads		14.1	14.1
Gewog Connectivity Roads			228.19
Farm Roads	116	182	228.19
Forest Roads			
Motorable Bridges (Nos.)			
Non-Motorable Bridges (Nos.)			
Telephone Connections (Nos.)	338	300	288
Internet Lease Line Connections (Nos.)			
Internet Broadband Connection (Nos.)			
Cable TV operators	4	4	4
Taxis (Nos.)	...	...	...
Buses Operating (Nos.)	1	3	3

### 9. TRADE & INDUSTRIES (Nos.)

	2015	2016	2017
Trade, Hotels and restaurants	32	33	33
Industries	451	453	455
Constructions	73	79	82

### 10. TOURISM (Nos.)

	2015	2016	2017
Tourists visited	298	231	259

### 11. ELECTRICITY

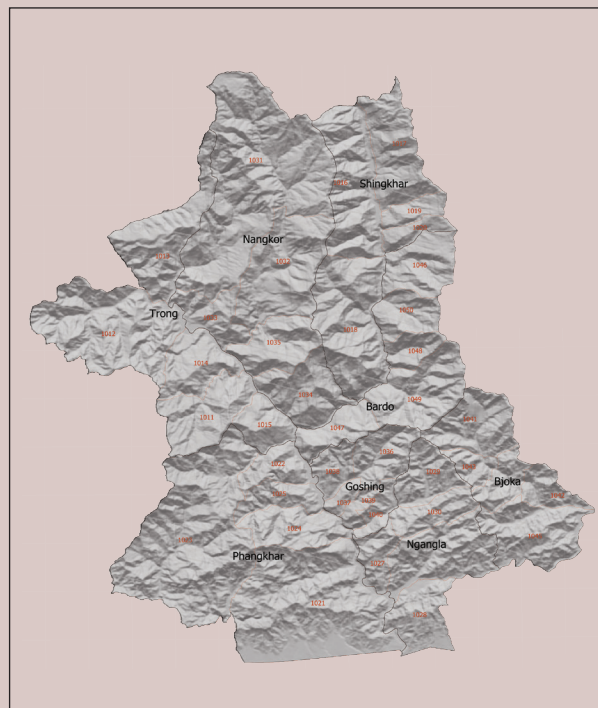
	2015	2016	2017
Households Electrified (%)	95	100%	100
Units Consumed (MU)			

### 12. RELIGION & CULTURE (Nos.)

	2015	2016	2017
Religious Institutions	8	9	9
Religious Monuments		405	405

### 13. PUBLIC FINANCE-Financial Year (Mill. Nu.)

Budget Outlay	2014/15	2015/16	2016/17
Current	...		
Capital	90.117		
Expenditure			
Current	236.860	216.538	289.102
Capital	82.642	180.773	162.419



# ZHEMGANG

## Dzongkhag at a Glance

### 2018

National Statistics Bureau  
 Post Box No. 338, Thimphu : Bhutan  
 Tel: +975-2-333296/325402/322753 Fax: +975-2-323069 www.nsb.gov.bt  
 ISBN 978-99936-28-39-2  
 Data source: Dzongkhag Statistics Section

## 1. GENERAL

### Geographical Characteristics

	2017
Area (sq. km)	2421.74
Altitude (masl.)	

### Administrative Tiers (Nos.)

	2017
Dungkhags	1
Gewogs	8
Chiwogs	40
Villages	153
Gungtong	

## 2. POPULATION

	2014	2015	2017
Total	21233	21501	17763
Male	10679	10803	9195
Female	10554	10698	8568
Population density (per sq. km)	9	9	7

## 3. POVERTY RATE (TERMINAL)

	As per PAR 2012	2017
Consumption Poverty Rate (%)	23.2	16.3
Multi-dimensional Poverty Rate (%)	15	

## 4. HEALTH

### Infrastructure (Nos.)

	2015	2016	2017
Hospitals	1	1	1
Indigenous Units	3	3	4
Basic Health Units (BHUs)	15	15	13
BHU I	2	2	2
BHU II	13	13	11
Outreach Clinics	27	36	36
With Sheds	27	31	31
Without Sheds		5	5
Ambulance	5	5	5

### Health Personnel (Nos.)

	2015	2016	2017
Doctors	3	5	5
Dungtshos (Indegenious Doctor)	1	1	2
Sowai Menpa (Indegenious Medical Technicians)	3	3	3
Nurses	18	18	28
Technicians	16	16	17

### Health Indicators

	2015	2016	2017
Infant Mortality Rate (Per 1,000 live births)	7		
Crude Birth Rate (Per 1,000 population)	...		

Crude Death Rate (Per 1,000 population)	...		
Maternal Mortality Rate (%)	0		
Doctors per bed	18	18	10.8
Birth attended by trained personnel (%)	154	123	126
Under one immunization coverage (%)	99%	99%	99%

### Sanitation

Rural water supply coverage (%)	2015	2016	2017
Rural population access to safe drinking water supplies (%)	98%	98%	98%
Rural population access to improved sanitation (%)	99%	99%	99%

## 5. EDUCATION

### Number of educational institutes (Includes pvt. Nos)

	2015	2016	2017
Tertiary Institute under RUB	0	0	0
Central Schools	2	4	4
Higher Secondary Schools		0	1
Middle Secondary Schools	2	0	1
Lower Secondary Schools	3	1	2
Primary Schools	22	22	12
Extended Class Room	...	1	10
Non Formal Education Centres (NFE)	17	21	21
Early Child Care and Development Centres	11	11	11
Other Institutes(Includes special institutes, vocational institutes & sankrit patshala)			

### Educational Indicators (Includes private schools)

	2015	2016	2017
School enrolment (Nos.)	4819	4408	4623
Male	2384	2174	2274
Female	2435	2234	2349
Teachers (Nos.)	285	293	302
Male	186	194	194
Female	99	99	99
Pupil-teacher Ratio	17	15	16
NFE Instructors	17	21	21
Male	4	19	19
Female	13	2	2
NFE learners (Nos.)	188	210	368
Male	52	55	69
Female	136	155	299

## 6. AGRICULTURE

Land Registration by Type	2015	2016	2017
---------------------------	------	------	------

Dry land (acres)	3251	3251	in ha
Wet land (acres)	640	640	in ha
Orchard (acres)	211	211	in ha
Irrigation channels (kms)			
Functional	132	132	147.8
Non- functional	...	...	...
Power tillers (Nos.)			83
Agriculture Seed Production Farms	0	0	0
Electric fencing (Nos.)	5	5	30
Electric fencing (kms.)	13.6	13.6	89.6
Farm sales shops (Nos.)	1		9

### Renewal Natural Resources (RNR)

	2015	2016	2017
RNR extension Centres (Nos.)	8	8	8

### Livestock (Nos.)

	2015	2016	2017
Veterinary Hospitals	1	1	1
Livestock Extension Centres	4	4	4
Regional Veterinary Laboratories (RLDC)	1	1	1
Fishery Farms		3	3
Poultry farms		17	18
Milk processing unit	3	5	6
Piggery farms		4	4
Dairy farm		...	...
Forestry	2015	2016	2017
Territorial Division HQs	1	1	1
Range Offices	4	4	4
Beat Offices	8	8	8
Community Forest (acreas)	6323.76	6323.76	6830
Nursery (Nos.)	2	2	2
Forest Cover (%)	87.7	87.7	94.17
Protected Areas (areas)	...	...	...

## 7. EMPLOYMENT

	2015	2016	2017
Labour Force (Nos.)	11849		
Male	6014		
Female	5835		
Un-employed (Nos.)	72		
Population Involved in Agriculture (%)	77		
Un-Employment Rate	0.5		
Labour Force Participation Rate	72.3		

## 8. TRANSPORT & COMMUNICATION

	2015	2016	2017
Length of Road (Kms.)	271.7	351.8	626.18