

## 8. TRANSPORT & COMMUNICATION

	2014	2015	2016
<b>Length of Road (Kms.)</b>			
Dzongkhag roads	99.0	99.0	181.0
Thromde roads	8.3	8.3	8.3
Gewog connectivity roads	132.9	132.9	132.9
Farm roads	168.4	172.3	172.0
Forest roads	14	14	14
Motorable bridges (Nos.)	20	20	20
Non-motorable bridges (Nos.)	438	...	608
Telephone connections (Nos.)	...	...	55
Internet lease line connections (Nos.)	438	...	295
Internet broadband connection (Nos.)	4	5	5
Cable TV operators	90	95	103
Taxis (Nos.)	23	18	13
Buses operating (Nos.)	17	23	18.0

## 9. TRADE & INDUSTRIES (Nos.)

	2014	2015	2016
Trade, hotels and restaurants	458	434	362
Industries	111	15	19
Constructions	18	18	9

## 10. TOURISM (Nos.)

	2014	2015	2016
Tourists visited	3	3	...

## 11. ELECTRICITY

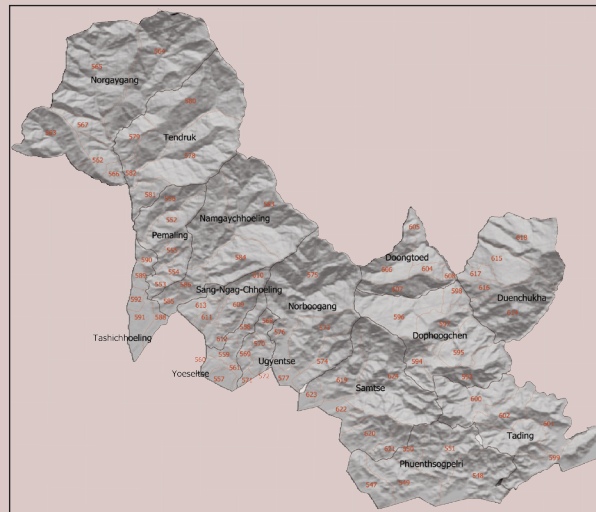
	2014	2015	2016
Households electrified (%)	97.5	99.0	99.0
Units consumed (MU)	0	0	0

## 12. RELIGION & CULTURE (Nos.)

	2013	2014	2015
Religious institutions	10	10	11
Religious monuments	36	36	37

## 13. PUBLIC FINANCE-Financial Year (Mill. Nu.)

	2014/15	2015/16	2016/17
Budget outlay	804.950	906.990	947.091
Current	555.594	526.914	633.683
Capital	249.356	380.076	313.408
Expenditure	465.330	867.394	872.141
Current	245.550	516.019	627.246
Capital	219.780	351.375	244.896



**SAMTSE**

**Dzongkhag at a Glance**

**2017**

National Statistics Bureau

Post Box No. 338, Thimphu : Bhutan

Tel: +975-2-333296/325402/322753 Fax: +975-2-323069 www.nsb.gov.bt

ISBN 978-99936-28-46-0

Data source: Dzongkhag Statistics Section

## 1. GENERAL

Geographical Characteristics	2016
Area (sq. km)	1,309.1
Altitude (masl.)	200 - 4,400

### Administrative Tiers (Nos.)

Dungkhags	2
Gewogs	15
Chiwogs	77
Villages	316
Gungtong	65

## 2. POPULATION

	2014	2015	2016
Total	68,579	69,612	70,618
Male	35,343	35,850	36,344
Female	33,235	33,762	34,274
Population density (per sq. km)	52	53	54

## 3. POVERTY RATE (TERMINAL) As per PAR 2012

Consumption poverty rate (%)	22.2
Multi-dimensional poverty rate (%)	0.07

## 4. HEALTH

Infrastructure (Nos.)	2014	2015	2016
Hospitals	2	2	2
Indigenous units	2	3	4
Basic health units (BHUs)			
BHU I	1	1	1
BHU II	13	13	13
Outreach clinics			
With sheds	44	43	46
Without sheds	...	5	4
Ambulance	5	5	5

### Health Personnel (Nos.)

Doctors	7	9	9
Dungtshos (Indigenous Doctor)	1	3	2
Sowai Menpa (Indigenous Medical Technicians)	3	4	4
Nurses	46	47	46
Technicians	46	49	57

### Health Indicators

Infant mortality rate (Per 1,000 live births)	18.9	22.3	0.0
Crude birth rate (Per 1,000 population)	15.1	14.3	14.1

Crude death rate (Per 1,000 population)	4.1	4.4	4.7
Maternal mortality rate (%)	...	0.1	1.2
Doctors per bed	0.1	0.1	8.9
Birth attended by trained personnel (%)	0.8	2.7	60.7
Under one immunization coverage (%)	99.6	99.5	99.3

### Sanitation

	2014	2015	2016
Rural water supply coverage (%)	98.2	98.9	97.0
Rural population access to safe drinking water supplies (%)	96.8	96.3	99.0
Rural population access to improved sanitation (%)	96.1	98.5	97.3

## 5. EDUCATION

### Number of educational institutes (Includes pvt. schools-Nos)

	2014	2015	2016
Tertiary institute under RUB	1	1	1
Central schools	...	1	2
Higher secondary schools	3	3	2
Middle secondary schools	3	2	2
Lower secondary schools	7	7	7
Primary schools	20	19	20
Extended class room	22	21	17
Non formal education centres	67	66	48
ECCD	10	10	21
Other Institutes(Zorigchusum)	...	...	...

### Educational Indicators (Includes pvt. schools)

	2014	2015	2016
School enrolment (Nos.)	15,779	15,735	15,404
Male	8,094	8,018	7,855
Female	7,685	7,717	7,549
Teachers (Nos.)	585	617	597
Male	359	391	376
Female	226	226	221
Pupil-teacher ratio	27.0	25.5	25.8
NFE instructors	69	71	48
Male	37	37	22
Female	32	34	26
NFE learners (Nos.)	986	967	584
Male	323	308	205
Female	663	659	379

## 6. AGRICULTURE

### Land Registration by Type

	2014	2015	2016
Dry land (acres)	...	20,141.56	20,141.56
Wet land (acres)	...	14,040.52	14,040.53
Orchard (acres)	...	8,730.23	8,730.23
Irrigation channels (kms)	...		46.1
Functional	...	55.26	43.10
Non-functional	...	8.83	3.00
Power tillers (Nos.)	...	15	15
Agriculture extension centres	...	...	...
Agriculture seed production farms	...	1	17
Electric fencing (Nos.)	...	2	34
Electric fencing (kms.)	...	...	10
Farm sales shops (Nos.)	...	...	...

### Renewal Natural Resources (RNR)

RNR extension centres (Nos.)	15	15	15
------------------------------	----	----	----

### Livestock (Nos.)

	2014	2015	2016
Veterinary hospitals	1	1	1
Livestock extension centres	1	1	1
Regional veterinary laboratories	20	69	103
Fishery farms	78	94	160
Poultry farms	...	1	1
Milk processing unit	35	64	160
Piggery farms	...	35	64

### Forestry

	2014	2015	2016
Territorial division HQs	1	1	1
Range offices	4	4	4
Beat offices	7	5	5
Community forest (acres)	113.67	2560.31	4,552.2
Nursery (Nos.)	...	...	1
Forest cover (%)	77	77	77
Protected areas (acres)	Nil	Nil	Nil

## 7. EMPLOYMENT

	2014	2015	2016
Labour force (Nos.)	32,231	38,868	38,599
Male	20,476	21,502	22,288
Female	11,755	17,366	16,311
Un-employed (Nos.)	484	709.0	296.0
Population involved in agriculture (%)	28.1	69.2	66.0
Un-employment rate	1.5	1.8	1.2
Labour force participation rate	57.5	73.2	52.7