

8. TRANSPORT & COMMUNICATION

	2014/15	2015/16	2016/17
Length of Road (Kms.)	403	449	684
Dzongkhag roads	53	143	143
Thromde roads	3	3	3
Gewog connectivity roads	143.2	143.2	143.2
Farm roads	342	388	395
Forest roads	0	0	0
Motorable bridges (Nos.)	...	19	19
Non-motorable bridges (Nos.)	11	11	11
Telephone connections (Nos.)	450	415	180
Internet lease line connections (Nos.)	...	135	150
Internet broadband connection (Nos.)	...		
Cable TV operators	2	2	2
Taxis (Nos.)	3	3	3
Buses operating (Nos.)	0	1	1

9. TRADE & INDUSTRIES (Nos.)

	2014	2015	2016
Trade, hotels and restaurants	14	21	106
Industries	58	55	56
Constructions	...	51	43

10. TOURISM (Nos.)

	2014	2015	2016
Tourists visited	96	68	66

11. ELECTRICITY

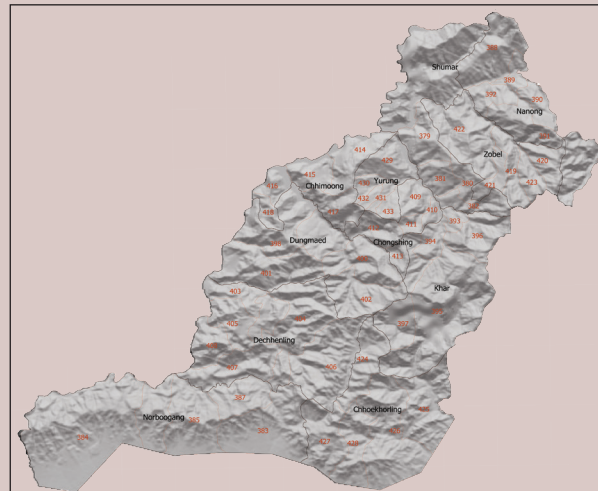
	2014	2015	2016
Households electrified (%)	97	98	99.2
Units consumed (MU)	0	0	0

12. RELIGION & CULTURE (Nos.)

	2014	2015	2016
Religious institutions	2	2	2
Religious monuments	121	121	121

13. PUBLIC FINANCE-

Financial Year (Mill. Nu.)	2013	2014	2015
	2012-13	2013-14	2014-15
	2014/15	2015/16	2016/17
Budget outlay		...	
Current		...	
Capital			604.11
Expenditure	2014/15	2015/16	2016/17
Current	302.39	312.02	400.578
Capital	332.14	212.45	300.302



PEMA GATSEL Dzongkhag at a Glance 2017

National Statistics Bureau

Post Box No. 338, Thimphu : Bhutan

Tel: +975-2-333296/325402/322753 Fax: +975-2-323069 www.nsb.gov.bt

ISBN 978-99936-28-46-0

Data source: Dzongkhag Statistics Section

1. GENERAL

Geographical Characteristics	2017
Area (sq. km)	1,022
Altitude (masl.)	500-3,000+

Administrative Tiers (Nos.)	2017
Dungkhags	1
Gewogs	11
Chiwogs	56
Villages	246
Household	6119
Institutional Household	108
Gungtong	909

2. POPULATION

	2016
Total	23805
Male	12032
Female	11773
Population density (per sq. km)	23

3. POVERTY RATE (TERMINAL) As per PAR 2012

Consumption poverty rate (%)	26.9
Multi-dimensional poverty rate (%)	11.6

4. HEALTH

Infrastructure (Nos.)

	2014/15	2015/16	2016/17
Hospitals	1	1	1
Indigenous Units	4	4	4
Basic Health Units (BHUs)			
BHU I	1	1	1
BHU II	11	11	11
Sub-post	7	7	7
Outreach Clinics			
With Sheds	32	32	32
Without Sheds	4	4	4
Ambulance	5	6	7

Health Personnel (Nos.)

Doctors	2	2	3
Dungtshos (Indegenious Doctor)	1	1	1
Sowai Menpa (Indegenious Medical Technicians)	4	4	4
Nurses	12	15	16
Technicians	20	20	21

Health Indicators

	2014/15	2015/16	2016/17
Infant mortality rate (Per 1,000 live births)	6	11	7
Crude birth rate (Per 1,000 population)	20.4	17	13
Crude death rate (Per 1,000 population)	5.2	5	6
Maternal mortality rate (%)	2	0	0
Doctors per bed	10	6	23
Birth attended by trained personnel (%)	75	80	90
Under one immunization coverage (%)	100	100	100

Sanitation

	2014/15	2015/16	2016/17
Rural water supply coverage (%)	100	100	100
Rural population access to safe drinking water supplies (%)	97	97	98
Rural population access to improved sanitation (%)	98	98	99

5. EDUCATION

Number of educational institutes (Includes pvt. schools-Nos)

	2015	2016	2017
Tertiary institute under RUB			
Central schools	1	4	4
Higher secondary schools	2	0	0
Middle secondary schools	2	1	1
Lower secondary schools	5	3	3
Primary schools	14	15	14
Extended class room	10	10	9
Non formal education centres	63	61	48
ECCD	8	10	12
Other institutes	0	0	0

Educational Indicators (Includes pvt. schools)

	2015	2016	2017
School enrolment (Nos.)	6,125	5,801	5,928
Male	3,086	2,923	2,927
Female	3,039	2,878	2,956
Teachers (Nos.)	350	331	339
Male	245	245	257
Female	105	86	82
Pupil-teacher ratio	15	18	17
NFE instructors	63	61	48
Male	20	13	10
Female	43	48	38
NFE learners (Nos.)	612	501	441
Male	121	411	344
Female	491	90	97

6. AGRICULTURE

Land Registration by Type

	2014/15	2015/16	2016/17
Dry land (acres)	11890	10700	10700
Wet land (acres)	356	356	356
Orchard (acres)	2335.4	2335.4	2335.4
Irrigation channels (kms)	25.07	25.07	25.07
Functional	1.94	1.94	1.94
Non-functional	23.13	23.13	23.13
Power tillers (Nos.)	42	53	
Agriculture extension centres	11	11	13
Agriculture seed production farms	0	0	0
Electric fencing (Nos.)	8	14	
Electric fencing (kms.)	26	47.22	
Farm sales shops (Nos.)	8	8	8

Renewal Natural Resources (RNR)	2015	2016	2017
RNR extension centres (Nos.)	13	13	13

Livestock (Nos.)

	2015	2016	2017
Veterinary hospitals	1	1	1
Livestock extension centres	13	13	13
Regional veterinary laboratories	0	0	0
Fishery farms	2	3	3
Poultry farms	26	28	28
Milk processing unit	5	5	5
Piggery farms	14	19	19

Forestry

Territorial division HQs	0	0	0
Range offices	2	2	2
Beat offices	3	3	3
Community forest (acres)			
Nursery (Nos.)	4	4	4
Forest cover (%)	87.7	87.7	87.7
Protected areas (acres)	...	1.6363	1.6363

7. EMPLOYMENT

	2013	2014	2015
Labour force (Nos.)	...	14742	15,266
Male	...	7622	7,862
Female	...	7120	7,404
Un-employed (Nos.)	...	119	26
Population involved in agriculture (%)	...	71.65	77
Un-employment rate	...	0.80	0.3
Labour force participation rate	...	63.4	67.3