

Farm Roads	173.8	181.62	467.8
Forest Roads	8.5	8.5	8.5
Motorable Bridges (Nos.)	3	3	3
Non-Motorable Bridges (Nos.)	10	10	10
Telephone Connections (Nos.)	173	172	173
Internet Lease Line Connections (Nos.)	7	7	7
Internet Broadband Connection (Nos.)	114	120	91
Cable TV operators	2	2	2
Taxis (Nos.)	51	60	68
Buses Operating (Nos.)	4	4	4

### 9. TRADE & INDUSTRIES (Nos.)

	2015	2016	2017
Trade, Hotels and restaurants	49	107	110
Industries	349	474	533
Constructions	132	272	278

### 10. TOURISM (Nos.)

Tourists visited	937	792	705
------------------	-----	-----	-----

### 11. ELECTRICITY

Households Electrified (%)	99.9	99.9	99.9
Units Consumed (MU)	4880801.99	5347564.97	6387564.67

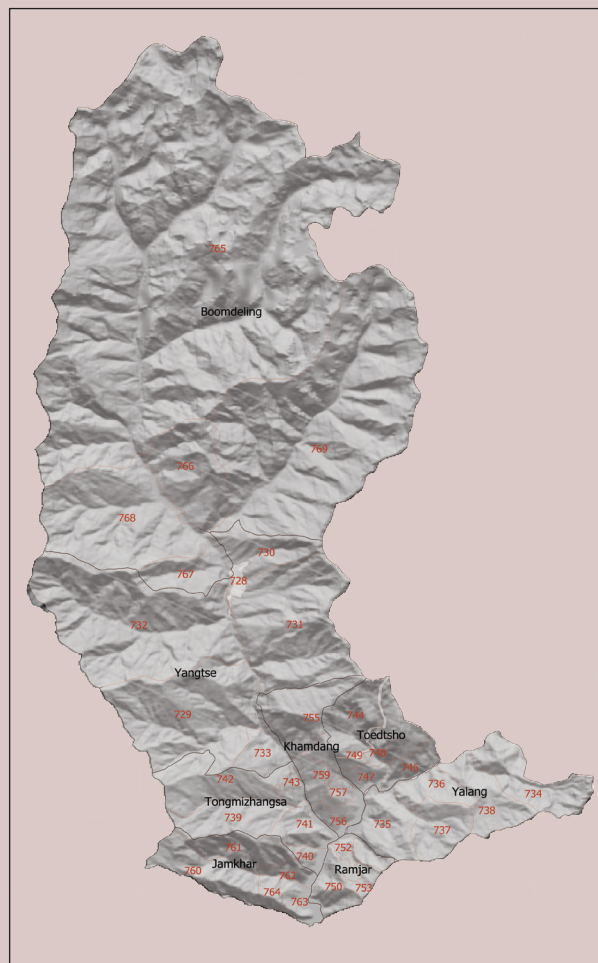
Indicators	YEAR		
	2015	2016	2017

### 12. RELIGION & CULTURE (Nos.)

Religious Institutions	9	9	9
Religious Monuments	504	504	504

### 13. PUBLIC FINANCE-Financial Year (Mill. Nu.)

	2014 -215	2015 -16	2016 -17
Budget Outlay	392.84	457.531	628.195
Current	246.44	241.562	316.948
Capital	146.4	215.969	311.247
Expenditure	367.769	445.691	594.873
Current	242.783	241.454	300.739
Capital	124.986	204.237	294.134



# TRASHIYANGTSE

## Dzongkhag at a Glance

### 2018

National Statistics Bureau  
 Post Box No. 338, Thimphu : Bhutan  
 Tel: +975-2-333296/325402/322753 Fax: +975-2-323069 www.nsb.gov.bt  
 ISBN 978-99936-28-39-2  
 Data source: Dzongkhag Statistics Section

## 1. GENERAL

<b>Geographical Characteristics</b>	<b>2015</b>	<b>2016</b>	<b>2017</b>
Area (sq. km)	1437.8	1438.8	1438.8
Altitude (masl.)	500-5400	500-5401	500-5401

## Administrative Tiers (Nos.)

	<b>2015</b>	<b>2016</b>	<b>2017</b>
Dungkhags	0	0	0
Gewogs	8	8	8
Chiwogs	41	41	41
Villages	117	117	117
Gungtong	740	740	740

## 2. POPULATION

	<b>2015</b>	<b>2016</b>	<b>2017</b>
Total	20874	20874	17300
Male	10286	10286	8719
Female	10588	10588	8581
Population density (per sq. km)	14	14	12

## 3. POVERTY RATE (TERMINAL)

	<b>2015</b>	<b>2016</b>	<b>2017</b>
Consumption Poverty Rate (%)	13.5	13.5	11.9
Multi-dimensional Poverty Rate (%)	14	14	11

## 4. HEALTH

<b>Infrastructure (Nos.)</b>	<b>2015</b>	<b>2016</b>	<b>2017</b>
Hospitals	1	1	1
Indigenous Units	2	2	2
Basic Health Units (BHUs)			
BHU I	1	1	1
BHU II	9	9	7
Outreach Clinics			
With Sheds	25	25	25
Without Sheds	2	2	0
Ambulance	3	3	3

## Health Personnel (Nos.)

	<b>2015</b>	<b>2016</b>	<b>2017</b>
Doctors	3	3	4
Dungtshos (Indegenious Doctor)	1	1	1
Sowai Menpa (Indegenious Medical Technicians?)	2	2	2
Nurses	14	19	20
Technicians	15	19	18

## Health Indicators

	<b>2015</b>	<b>2016</b>	<b>2017</b>
Infant Mortality Rate (Per 1,000 live births)	6	2	10.4
Crude Birth Rate (Per 1,000 population)			16.6
Crude Death Rate (Per 1,000 population)			7.1

Maternal Mortality Rate (%)	0	0	0
Doctors per bed	20	20	20
Birth attended by trained personnel (%)			100
Under one immunization coverage (%)	99	100	100

## Sanitation

	<b>2015</b>	<b>2016</b>	<b>2017</b>
Rural water supply coverage (%)	98	99	100
Rural population access to safe drinking water supplies (%)	98	98	100
Rural population access to improved sanitation (%)	93	93	100

## 5. EDUCATION

<b>Number of educational institutes (Includes private schools-Nos)</b>	<b>2015</b>	<b>2016</b>	<b>2017</b>
Tertiary Institute under RUB	0	0	0
Central Schools	0	2	3
Higher Secondary Schools	1	0	0
Middle Secondary Schools	1	1	1
Lower Secondary Schools	5	5	5
Primary Schools	21	20	19
Extended Class Room	0	0	0
Non Formal Education Centres (NFE)	17	16	16
Early Child Care and Development Centres	15	16	16
Other Institutes(Zorigchusum)	1	1	1

## Educational Indicators (Includes private schools)

	<b>2015</b>	<b>2016</b>	<b>2017</b>
School enrolment (Nos.)	4944	4976	4844
Male	2381	2316	2281
Female	2563	2660	2563
Teachers (Nos.)	280	334	308
Male	217	270	241
Female	63	66	308
Pupil-teacher Ratio	1:18	1:15	1:16
NFE Instructors	19	17	17
Male	3	3	3
Female	16	14	16
NFE learners (Nos.)	227	165	227
Male	48	24	48
Female	179	141	179
Net Primary Enrolment rate (%)	61.4	61.4	
Literacy rate (%)	60.4	60.4	59.1

## 6. AGRICULTURE

<b>Land Registration by Type</b>	<b>2015</b>	<b>2016</b>	<b>2017</b>
Dry land (acres)	2400	2400	2400

Wet land (acres)	10813.16	10813.16	10813.16
Orchard (acres)	0.50	0.50	0.50
Irrigation channels (kms)	153.76	153.76	153.76
Functional	153.76	153.76	153.76
Non- functional	0	0	0
Power tillers (Nos.)	49	49	57
Agriculture Extension Centres	8	8	8
Agriculture Seed Production Farms	1	1	1
Electric fencing (Nos.)	18	56	56
Electric fencing (kms.)		170.236	269.12
Farm sales shops (Nos.)	0	8	8

## Renewal Natural Resources (RNR)

	<b>2015</b>	<b>2016</b>	<b>2017</b>
RNR extension Centres (Nos.)	8	8	8

## Livestock (Nos.)

	<b>2015</b>	<b>2016</b>	<b>2017</b>
Veterinary Hospitals	1	1	1
Livestock Extension Centres	8	8	8
Regional Veterinary Laboratories (RLDC)	0	0	0
Fishery Farms	0	0	0
Poultry farms	20	175	188
Milk processing unit	0	0	0
Piggery farms	0	0	0

## Forestry

	<b>2015</b>	<b>2016</b>	<b>2017</b>
Territorial Division HQs	0	0	0
Range Offices	1	1	1
Beat Offices	8	8	8
Community Forest (acreas)	6490.5	6490.5	7022.0
Nursery (Nos.)	2	2	2
Forest Cover (%)	76	76	76
Protected Areas (areas)	375607.2	375607.2	375607.2

## 7. EMPLOYMENT

	<b>2015</b>	<b>2016</b>	<b>2017</b>
Labour Force (Nos.)	8132	8132	8132
Male	4378	4378	4378
Female	3755	3755	3755
Un-employed (Nos.)	57	57	57
Population Involved in Agriculture (%)	67.1	67.1	67.1
Un-Employment Rate	2.8	2.8	1.3
Labour Force Participation Rate	57.2	57.2	57.2

## 8. TRANSPORT & COMMUNICATION

<b>Length of Road (Kms.)</b>	<b>2015</b>	<b>2016</b>	<b>2017</b>
Dzongkhag Roads	40.7	40.7	71.4
Thromde Roads	8.7	8.7	8.7
Gewog Connectivity Roads	79	79	79