

**NATIONAL STATISTICS BUREAU**

**P.O.Box.# 338, Thimphu Bhutan**

**Phone # +00975-2-335851/326802**

**Fax # +975-2-323069**

**Website: [www.nsb.gov.bt](http://www.nsb.gov.bt)**



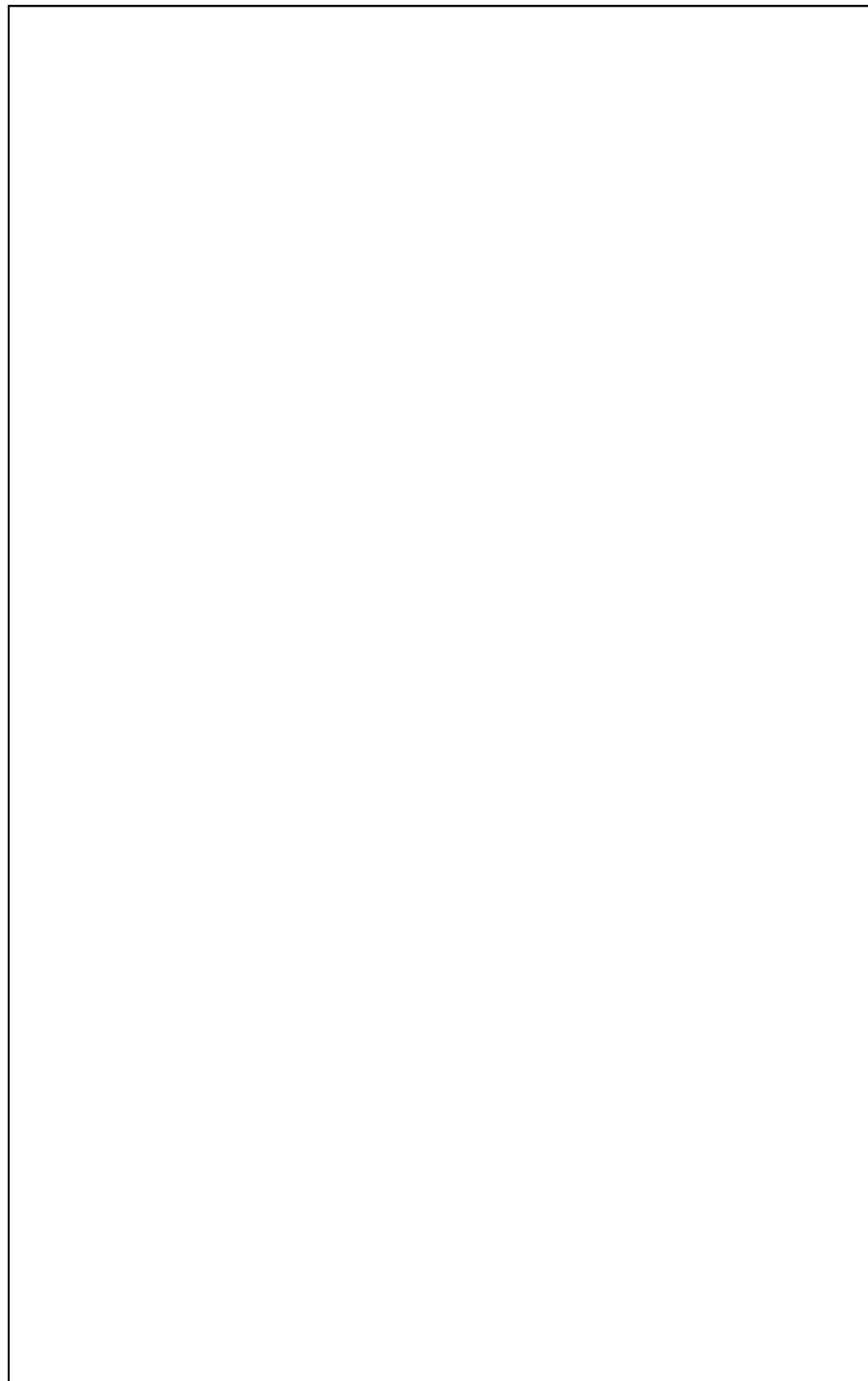
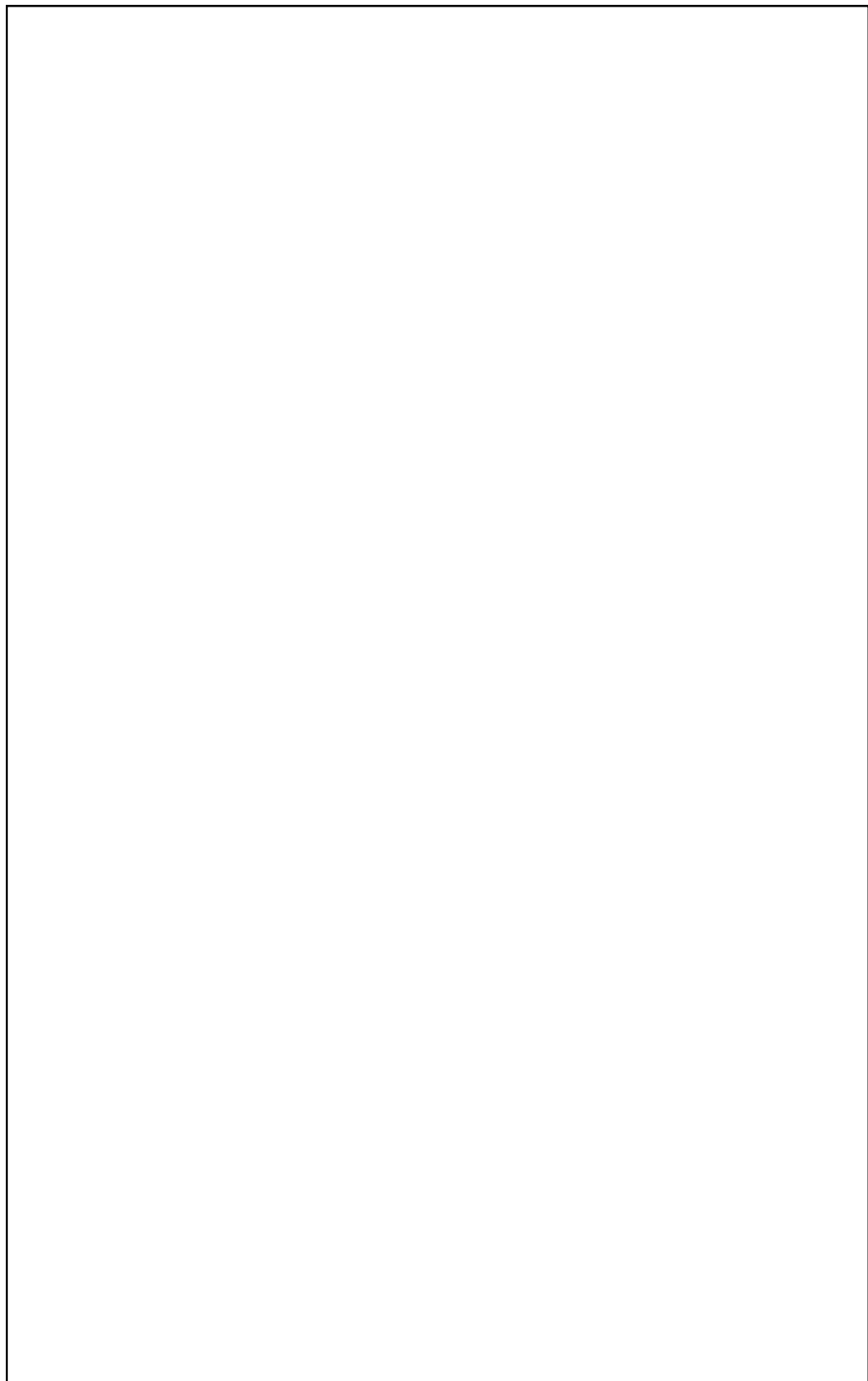
དཔལ་ལྷན་འབྲུག་གཞུང་།  
རྒྱལ་ཡོངས་ཚུལ་དཔྱད་བཀོད་འཛིན།



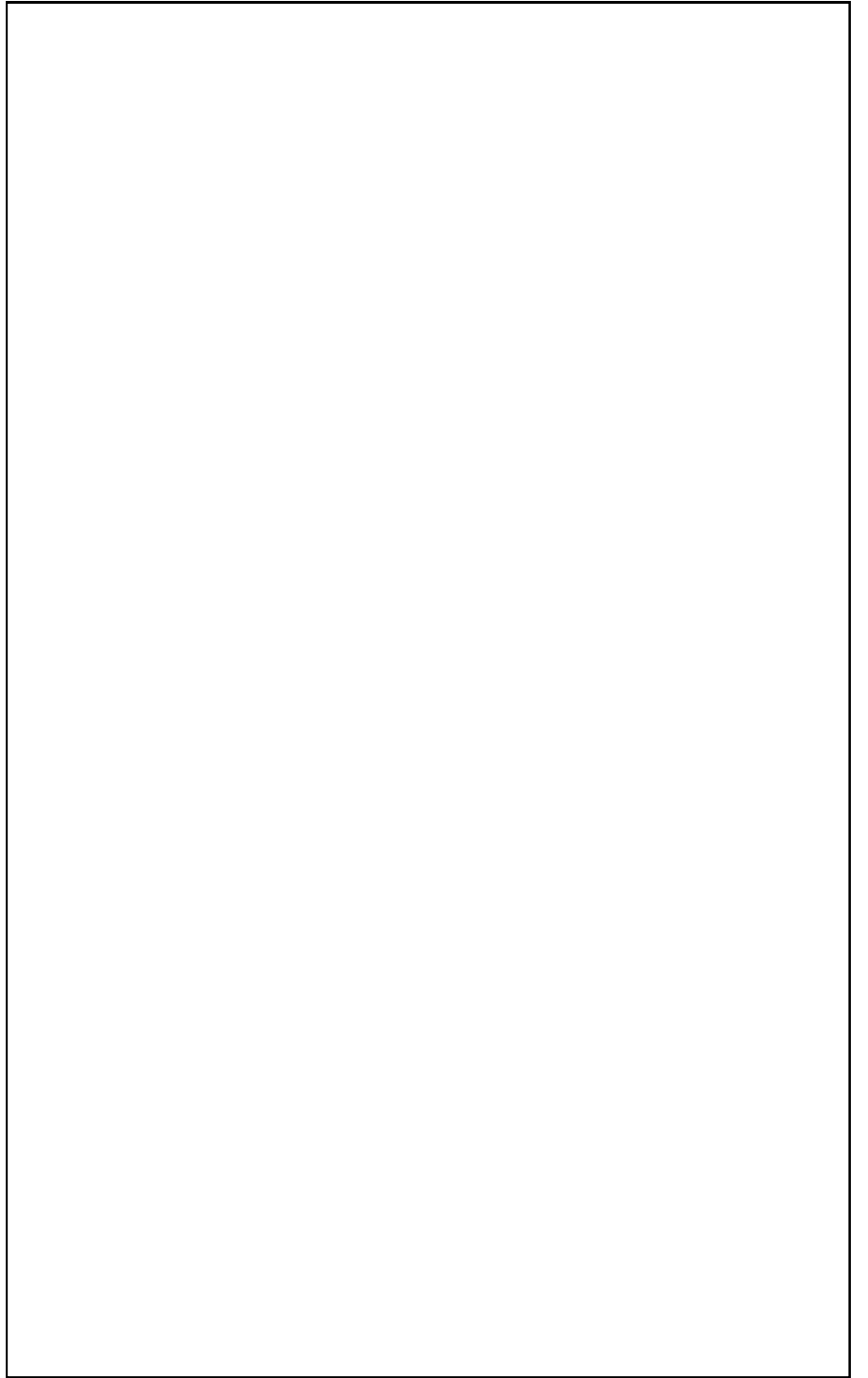
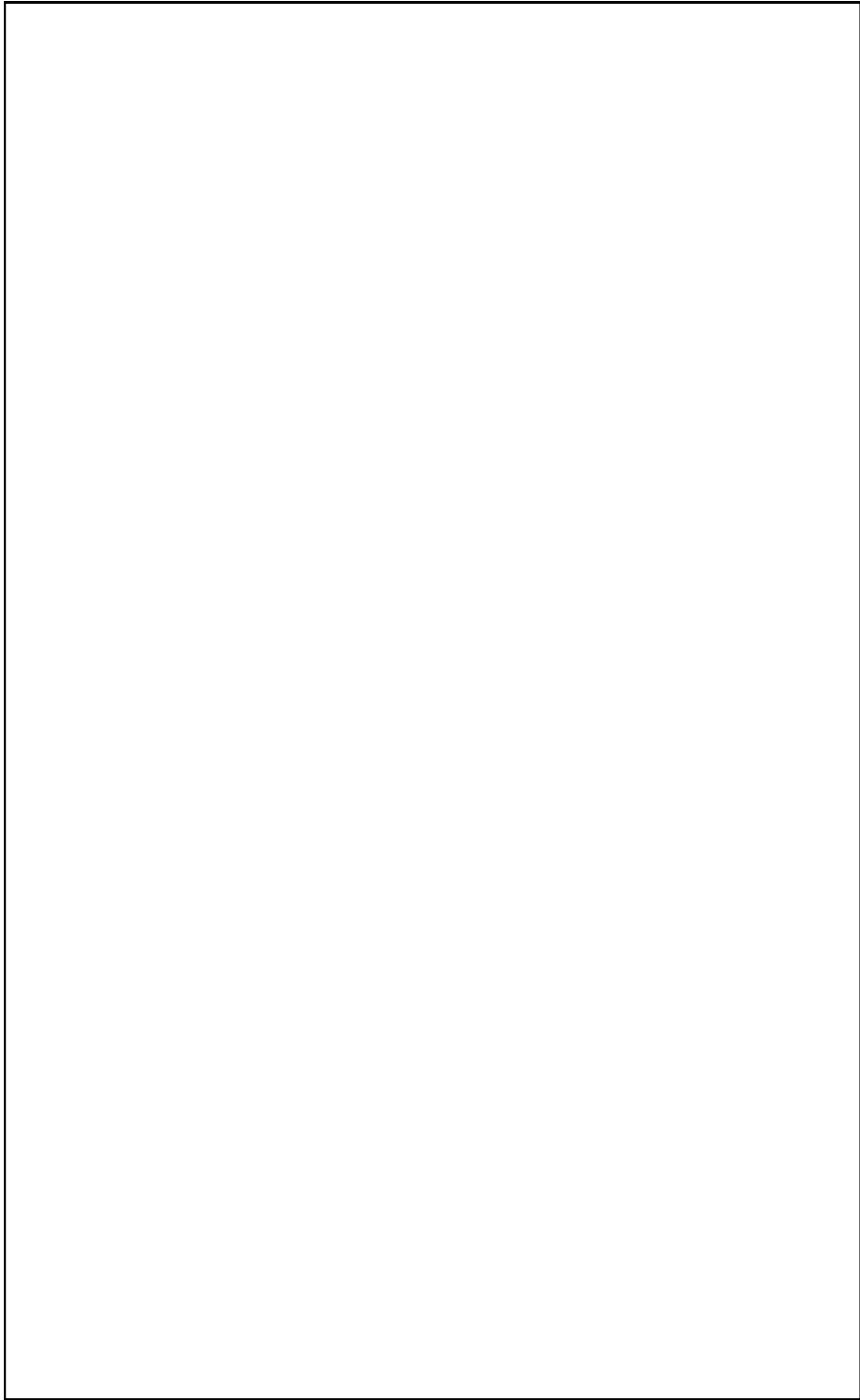
**MONTHLY  
CONSUMER PRICE INDEX (CPI) BULLETIN  
AUGUST 2014**

**NATIONAL ACCOUNTS & PRICE DIVISION  
NATIONAL STATISTICS BUREAU**

**Catalogue No. 103**



<b>Sl. No.</b>	<b>CONTENTS</b>	<b>Page No.</b>
1	Foreword.....	1
2	Statistical Tables & Graphs	
	Table 1 : Year-on-Year Inflation: National.....	2
	Table 2 : Year-on-Year Inflation: Domestic.....	2
	Table 3 : Year-on-Year Inflation: Import.....	2
	Graph 1 : Year-on-Year Inflation.....	3
	Table 4 : Year-on-Year Index & Percent Change: Group Level.....	4
	Table 5 : Year-on-Year Index & Percent Change: Food Group.....	5
	Table 6 : Year-on-Year Index & Percent Change: Non-Food Group Level.....	6
	Table 7 : Month-on-Month Index & Percent Change: National.....	7
	Table 8 : Month-on-Month Index & Percent Change: Domestic.....	7
	Table 9 : Month-on-Month Index & Percent Change: Import.....	7
	Graph 2 : Month-on-Month Inflation rate (Overall, Domestic and Import.....	8
	Graph 3 : Time Series Index Level Trend.....	9
	Graph 6 : Purchasing Power of Ngultrum & Graph.....	10
3.	Technical Notes.....	11-16



## **7. Sample Outlets**

Sample outlets are permanent establishments or retail shops from which monthly price of goods and services are collected or quoted. These include groceries, clothing and footwear, restaurants, hardware shops, vegetable vendors and service providers etc. The outlets are selected based on a set of pre-determined criteria. For current CPI, prices are collected from a sample of 557 outlets. Special procedures are applied to replace the outlets or the items, if they are no longer available or sold by the outlet.

## **8. Data Collection Method**

Prices are collected online from the sampled outlets by price collectors using mobile application devices once every month.

## **FOREWORD**

National Statistics Bureau (NSB) is pleased to release the Consumer Price Index (CPI) Bulletin for August 2014. This is the 9<sup>th</sup> series of monthly CPI Bulletin published by National Accounts and Price Division, NSB.

The Bulletin is compiled using December 2012 as the price reference period and tracks the price movements of 436 commodities and services in 20 districts and 2 major urban areas. The rebased CPI uses the Geometric Modified Laspeyres formula, and has separate indices for domestic and imported goods and services.

We thank all agencies and stakeholders for their support in bringing out this bulletin and look forward for their continued support.

September 2014

National Statistics Bureau

Table 1: Year on Year Index & percent change																			
Group	Weights	Index (December 2012=100)																	
		2013					2014					percent change(%)							
		Mar	Apr	May	Jun	Jul	Aug	Mar	Apr	May	Jun	Jul	Aug	Mar	Apr	May	Jun	Jul	Aug
Food	39.92	102.42	104.12	104.16	106.04	107.87	109.66	115.60	116.71	117.54	118.81	119.80	120.25	12.87	12.09	12.85	12.04	11.06	9.66
Non-Food	60.08	104.03	104.49	104.97	106.23	108.88	107.85	110.75	111.11	111.77	112.10	115.54	116.56	6.46	6.34	6.47	5.52	6.12	8.08
Overall	100	103.38	104.34	104.65	106.15	108.47	108.57	112.66	113.31	114.04	114.73	117.22	118.02	8.97	8.60	8.97	8.08	8.06	8.71

Table 2: Year-on-Year Index & percentage change: Domestic																			
Group	Weights	Index (December 2012=100)																	
		2013					2014					Percent change(%)							
		March	April	May	June	July	Aug	Mar	Apr	May	Jun	Jul	Aug	Mar	Apr	May	Jun	Jul	Aug
Food	17.15	103.50	103.92	103.77	105.41	107.76	109.70	117.44	117.94	118.31	119.84	120.97	121.02	13.47	13.49	14.01	13.69	12.26	10.32
Non-Food	30.24	104.24	104.26	104.46	106.09	106.21	106.43	110.22	110.80	113.25	113.48	115.22	116.51	5.74	6.27	8.41	6.97	8.48	9.48
Total	47.39	103.97	104.14	104.21	105.84	106.77	107.60	112.78	113.33	115.06	115.74	117.27	118.12	8.47	8.83	10.41	9.35	9.83	9.78

Table 3: Year-on-Year Index & percentage change : Import																			
Group	Weights	Index (December 2012=100)																	
		2013					2014					Percent change(%)							
		Mar	April	May	June	July	Aug	Mar	Apr	May	Jun	Jul	Aug	Mar	Apr	May	Jun	Jul	Aug
Food	22.77	101.67	104.35	104.56	106.64	108.11	109.58	114.35	115.93	117.13	118.22	119.14	119.92	12.47	11.10	12.02	10.86	10.21	9.43
Non-Food	29.84	103.81	104.72	105.49	106.38	111.65	109.30	111.28	111.43	110.28	110.71	115.86	116.61	7.19	6.41	4.54	4.08	3.78	6.69
Total	52.61	102.88	104.56	105.09	106.49	110.10	109.42	112.60	113.36	113.20	113.90	117.27	118.03	9.45	8.41	7.72	6.96	6.51	7.87

## 6. Market Basket

Market basket refers to a sample of goods and services which is representative of all goods and services purchased by the households. The present market basket has 436 items, as compared to 363 items in the previous CPI basket. The new re-based CPI uses the Classification of Individual Consumption According to Purpose (COICOP). The 12 major groups are:

1. Food and Non-Alcoholics Beverages;
2. Alcoholic Beverages & Narcotics;
3. Clothing and Footwear;
4. Housing, Water, Electricity, Gas and Other Fuels;
5. Furnishing, Household Equipment and Routine Household Maintenance;
6. Health;
7. Transport;
8. Communication;
9. Recreation and Culture;
10. Education;
11. Restaurant and Hotels;
12. Miscellaneous Goods and Services.

## 5. Index Calculation Formula

Geometric Modified Laspeyres formula is used to calculate the CPI:

$$P_{GYo} = \prod_{i=1}^n \left( \frac{P_i^t}{P_i^0} \right)^{S_i^b}$$

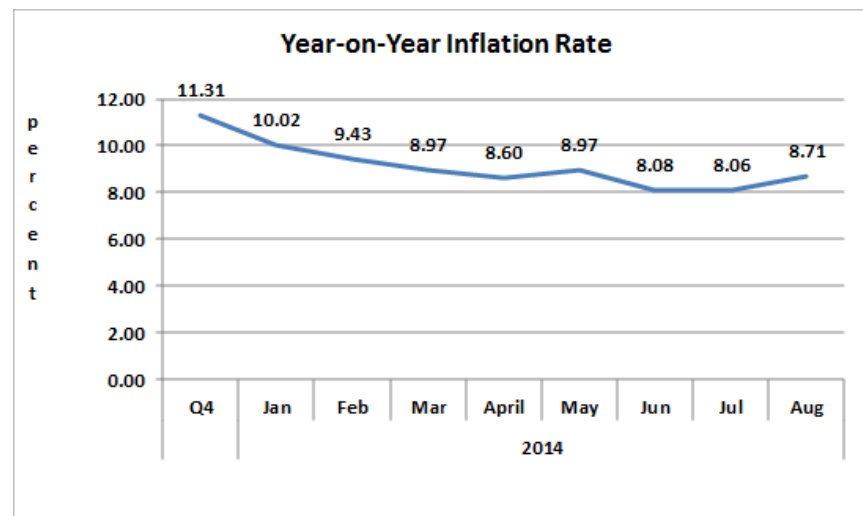
$S_i^b$  = Expenditure Shares of the Base Period (weights from BLSS)

$P_i^t$  = Current Period Price

$P_i^0$  = Previous Period Price

$\left( \frac{P_i^t}{P_i^0} \right)$  = Price Relatives

**Graph 1: Year-on-Year Inflation**



### Year-on-Year Inflation

The annual inflation rate for August 2014 [*i.e., from August 2013 to August 2014*] is 8.71% compared to 8.06% for previous month of July 2014. The corresponding inflation rates for the Food was 9.66% and Non-food was 8.08%. It was mainly driven by increase in prices of Housing and electricity at 12.20%; and Food and non-alcoholic beverages at 9.45%.

Prices for domestically produced goods & services increased by 9.78% while imported goods increased by 7.87% over one year period *i.e.* from August 2013 to August 2014.

**Table 4: Year on Year index: Group Level**

12 Major Groups	Weights	Index (December 2012=100)												Percent change(%)											
		2013						2014						2014											
		Mar	Apr	May	Jun	Jul	Aug	Mar	Apr	May	Jun	Jul	Aug	Mar	Apr	May	Jun	Jul	Aug						
FOOD AND NON-ALCOHOLIC BEVERAGES	36.88	102.14	103.82	103.40	105.26	107.03	108.92	114.21	115.40	116.32	117.63	118.69	119.22	11.82	11.15	12.49	11.75	10.89	9.45						
ALCOHOLIC BEVERAGES AND NARCOTICS	3.03	105.90	107.77	113.85	115.98	118.66	119.01	134.02	133.85	133.57	134.14	134.17	133.54	26.55	24.19	17.32	15.66	13.07	12.21						
CLOTHING AND FOOTWEAR	9.20	105.46	106.52	107.58	109.16	109.40	113.64	117.82	119.33	114.47	115.34	116.81	118.20	11.72	12.03	6.41	5.66	6.77	4.01						
HOUSING, WATER, ELECTRICITY, GAS AND OTHER FUELS	21.70	103.73	103.80	104.02	106.33	113.08	107.73	111.38	112.16	115.75	116.68	119.06	120.87	7.38	8.06	11.27	9.73	5.29	12.20						
FURNISHING, HOUSEHOLD EQUIPMENT AND ROUTINE MAINTENANCE OF THE HOUSE	2.22	111.81	112.41	114.65	114.71	115.74	117.13	123.54	122.30	123.05	123.05	123.60	124.12	10.48	8.80	7.33	7.27	6.79	5.97						
HEALTH	4.67	101.26	102.27	102.59	104.34	104.53	104.58	103.66	104.31	104.93	104.95	105.02	105.16	2.38	2.00	2.29	0.59	0.47	0.55						
TRANSPORT	11.98	102.89	102.97	103.21	103.24	103.47	103.86	106.36	105.74	105.97	106.35	117.66	118.15	3.37	2.69	2.68	3.02	13.72	13.76						
COMMUNICATION	3.03	100.17	100.20	100.52	100.18	100.22	100.22	99.73	99.64	99.57	95.47	95.47	95.46	-0.44	-0.57	-0.95	-4.70	-4.74	-4.74						
RECREATIONAL AND CULTURE	2.35	106.12	107.66	107.43	107.87	108.10	108.60	109.63	109.80	109.44	109.55	109.50	109.59	3.31	1.98	1.87	1.56	1.30	0.91						
EDUCATION	1.64	108.35	108.35	108.35	108.35	109.63	109.63	114.96	114.96	114.96	114.96	116.03	116.03	6.10	6.10	6.10	6.10	5.84	5.84						
RESTAURANTS AND HOTELS	1.24	106.47	106.70	108.21	108.46	109.59	110.59	113.00	113.45	112.35	112.70	113.45	114.60	6.13	6.32	3.83	3.91	3.52	3.63						
MISCELLANEOUS GOODS AND SERVICES	2.06	104.44	107.28	108.90	109.91	111.50	113.44	117.11	116.34	116.67	117.30	118.17	119.06	12.14	8.44	7.13	6.73	5.98	4.96						
All	100.00	103.38	104.34	104.65	106.15	108.47	108.57	112.66	113.31	114.04	114.73	117.22	118.02	8.97	8.60	8.97	8.08	8.06	8.71						

**4. Reference Period**

There is no single “base period” for a price index. It can mean different things to different users. In practice, there are three “reference periods” used.

- ◆ Weight Reference Period is the period during which household consumption values are collected. The weight-reference period for the new rebased CPI is 2012, that is, the period when the BLSS was conducted.
- ◆ Index Reference Period is the period when the index is set to 100. In the new CPI, the index reference period is December 2012.
- ◆ Price Reference Period is the period of the first price of each product used to calculate the elementary indices (indices for individual CPI items). The price reference period for the new CPI is the fourth Quarter 2012.



### 3. Weights

The weights reflect the relative importance or contribution to the total consumption expenditures of all households. It is determined using the spending patterns of households during some previous weight reference period.

It is important for the weights to reflect the current consumption patterns of the household. The more current the weights, the more reflective they are of current consumer spending patterns. The international standards recommend rebasing CPI every 5 years.

The current CPI weights were updated in 2012 following the conduct of the Bhutan Living Standard Survey (BLLS) in March – May 2012. Expenditure details were broken down into imported and domestic goods to facilitate calculation of domestic and imported inflation.

**Table 5: Year-on-year Index & Percent Change: Food Group**

Group	Weights	Index (December 2012=100)												Percent change(%)					
		2013						2014						2014					
		March	April	May	June	July	Aug	Mar	Apr	May	Jun	Jul	Aug	Mar	Apr	May	Jun	Jul	Aug
FOOD	39.92	102.37	104.04	103.52	105.26	107.05	108.84	114.26	115.52	116.47	117.85	118.95	119.49	116.1	11.03	12.51	11.95	11.12	9.79
Bread and Cereals	9.72	104.94	106.26	106.53	106.78	108.09	110.98	117.25	117.61	118.81	119.57	120.43	121.15	117.3	10.69	11.53	11.98	11.42	9.16
Meat	3.1	105.57	104.54	108.07	109.48	109.66	112.80	118.93	122.44	124.02	124.49	125.57	126.06	126.6	17.13	14.76	13.71	14.51	11.76
Fish	1.06	108.27	105.95	108.38	109.63	116.24	116.94	125.27	125.63	127.28	128.68	130.34	132.25	15.70	18.58	17.44	17.38	12.13	13.10
Milk, cheese and eggs	6.88	104.97	105.37	104.93	105.59	106.85	107.36	113.04	115.63	117.04	117.38	119.11	119.70	7.68	9.74	11.53	11.17	11.47	11.49
Oils and fats	3.19	104.50	103.93	103.12	103.72	108.42	108.42	111.69	112.43	114.08	113.63	113.64	111.54	6.87	8.18	10.63	9.55	4.82	2.88
Fruit	1.68	110.32	103.90	106.54	104.24	101.91	102.35	116.75	116.93	117.92	117.49	117.92	116.69	5.83	12.54	10.68	12.70	15.71	14.02
Vegetables	7.83	92.92	100.17	95.40	101.33	104.37	106.72	109.63	110.63	110.46	114.65	116.17	117.87	17.98	10.43	15.79	13.15	11.31	10.45
Sugar, jam, honey etc	0.98	103.57	102.60	105.10	106.25	107.36	107.69	106.31	107.46	107.21	108.82	109.28	109.53	2.65	4.74	2.01	2.41	1.79	1.71
Food products n.e.c	0.64	100.12	102.40	109.23	109.92	106.31	108.39	120.11	119.82	121.06	125.01	125.58	125.49	19.97	17.01	10.83	13.73	18.12	15.77
Coffee, tea and cocoa	0.68	98.08	100.86	103.09	103.17	108.85	111.05	117.50	117.07	117.39	117.72	118.37	119.19	19.80	16.07	13.87	14.11	8.74	7.34
Mineral water, softdrinks & juices	1.11	98.87	100.12	103.81	106.44	105.21	105.80	106.12	106.36	106.36	106.36	106.36	106.47	7.33	6.23	2.45	-0.08	1.09	0.63
Spirits	0.65	105.54	101.90	104.23	108.13	107.63	107.63	109.71	109.70	111.53	112.16	112.16	111.53	3.96	7.65	7.00	3.72	4.21	3.62
Wine	0.44	104.13	105.64	106.00	106.83	116.81	116.81	119.06	119.05	121.04	121.72	121.72	121.04	14.34	12.69	14.19	13.94	4.21	3.62
Beer	0.56	97.32	100.59	103.59	106.69	107.81	107.81	112.18	112.41	112.41	113.28	113.28	111.57	15.28	11.76	8.51	6.18	5.07	3.49
Narcotics	1.38	110.37	114.53	126.16	127.30	129.81	130.65	164.38	163.79	160.99	161.23	161.29	161.34	48.94	43.02	27.57	26.65	24.25	23.49

**Table 6: Year-on-Year Index & Percent Change: Non-Food Group**

Group	Weights	Index (December 2012=100)												Percent Change(%)											
		2013						2014						2014											
		March	April	May	June	July	Aug	Mar	Apr	May	Jun	Jul	Aug	Mar	Apr	May	Jun	Jul	Aug						
Clothing	6.24	106.08	105.76	106.63	108.28	108.52	113.27	117.76	118.43	112.37	113.98	115.84	117.79	110.1	11.98	5.39	5.26	6.75	3.99						
Footwear	2.96	104.17	108.13	109.60	111.04	111.28	114.41	117.97	121.26	119.04	118.26	118.88	119.06	13.25	12.15	8.61	6.50	6.83	4.06						
Housing (rental)	15.12	105.07	105.07	105.07	107.48	107.48	107.48	110.04	111.35	116.38	117.72	118.67	121.19	4.73	5.98	10.76	9.53	10.41	12.76						
Maintenance & repair of the dwelling	1.88	101.88	102.66	104.41	109.33	108.98	110.02	110.98	109.42	116.19	116.19	116.19	124.42	15.90	15.90	15.49	14.30	-8.90	15.67						
Electricity, gas & other fuels	4.54	100.25	100.25	100.60	101.65	136.58	107.57	116.19	116.19	116.19	116.19	116.19	119.00	-2.36	1.33	4.16	11.43	15.31	14.70						
Furniture and furnishing, carpets and other floor	0.37	117.24	115.66	113.67	106.01	103.20	103.88	114.48	117.20	118.40	118.13	119.00	119.15	22.55	20.91	16.27	10.57	7.97	6.68						
Household textiles	0.67	117.88	118.66	125.09	131.54	135.44	137.25	144.45	143.47	145.44	145.44	146.24	146.41	3.63	1.57	-0.26	4.30	4.43	3.07						
Household appliances	0.42	107.60	108.60	108.94	104.19	104.27	106.79	111.51	110.31	108.65	108.67	108.88	110.07	14.01	13.08	11.34	12.16	8.11	7.87						
Glassware, tableware & utensils	0.25	114.99	116.18	118.90	118.15	122.78	123.21	131.10	131.38	132.38	132.52	132.74	132.90	7.12	-0.85	2.14	-0.41	-2.03	-1.89						
Tools and equipments for house and garden	0.24	108.66	109.38	108.72	111.71	114.17	115.31	116.39	108.45	111.04	111.26	111.85	113.13	14.71	11.18	7.01	3.41	4.49	3.79						
Goods and services for household maintenance	0.35	102.15	103.61	107.87	111.65	110.92	111.88	117.17	115.19	115.43	115.46	115.90	116.12	0.00	0.00	0.00	0.00	27.65	27.65						
Purchase of vehicles	4.58	100.00	100.00	100.00	100.00	100.00	100.00	100.00	100.00	100.00	100.00	100.00	127.65	5.47	2.99	3.21	3.37	4.93	5.09						
Fuels & Lubricants	3.11	103.39	103.97	104.05	104.09	105.59	106.85	109.05	107.08	107.39	107.60	110.79	112.28	9.26	-9.73	-15.79	-10.41	-10.99	-11.15						
Telephone and telefax equipment	0.17	103.07	103.70	109.76	103.16	103.84	103.84	95.25	93.61	92.42	92.42	92.42	92.42	7.79	3.29	7.52	4.39	0.53	-0.19						
Audio-visual, photographic & information processing equipments	0.48	102.41	104.78	100.02	103.02	106.41	107.06	110.38	108.22	107.54	107.54	106.97	106.85	100.04	-0.72	-0.09	-0.13	0.27	0.27						
Recreational & cultural services	0.92	100.04	100.03	100.06	100.17	99.77	99.77	99.32	99.94	100.04	100.04	100.04	100.04	4.34	3.68	3.73	2.28	2.43	2.38						
Newspapers, books & stationery	0.72	112.85	114.32	114.43	116.06	116.10	116.54	117.74	118.52	118.69	118.71	118.92	119.31	4.81	5.33	2.68	3.33	3.34	2.99						
Catering services	1.05	106.54	106.51	107.97	107.42	107.91	109.07	111.67	112.19	110.87	111.00	111.51	112.33	13.69	11.94	10.42	7.18	4.57	7.21						
Accommodation services	0.19	106.11	107.77	109.50	114.35	119.34	119.34	120.63	120.63	120.63	120.91	122.56	124.79	10.21	7.18	6.81	7.16	7.36	6.16						
Personal care	1.59	102.10	104.40	105.54	105.60	106.28	108.55	112.52	111.90	112.73	113.17	114.10	115.24	18.93	12.83	8.24	5.27	1.45	1.00						
Personal effects n.e.c	0.47	112.76	117.62	121.07	125.81	131.15	131.64	134.11	132.72	131.05	132.45	133.05	132.96	18.93	12.83	8.24	5.27	1.45	1.00						

## TECHNICAL NOTES

### 1. Concept and Definition of CPI

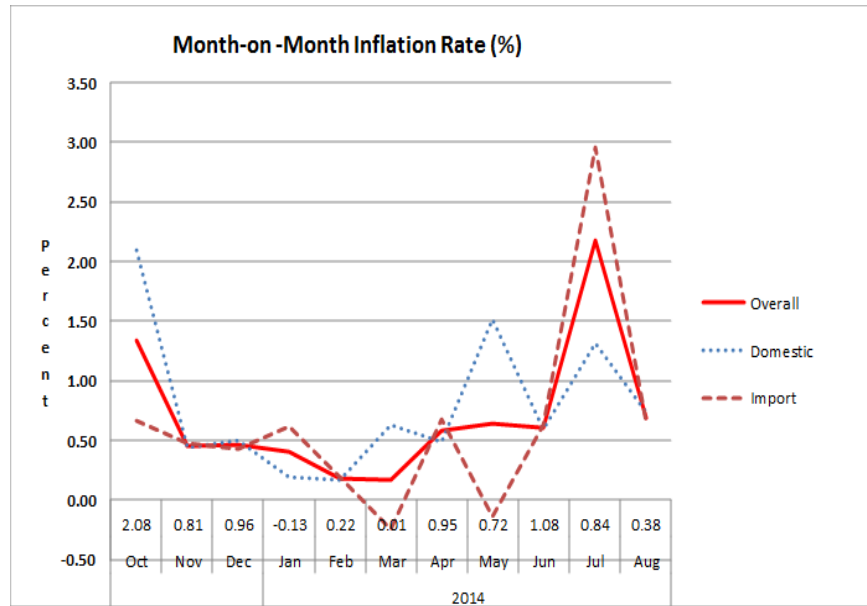
The Consumer Price Index (CPI) is a measure of changes in the average retail prices of a market basket of goods and services purchased by households for day-to-day living. It shows how much, on average, prices of goods and services have increased or decreased from a particular reference period, commonly known as the base period.

### 2. Uses of CPI

- ◆ As an economic indicator: - CPI is one of the major indicators that determine the effectiveness of an economic policy. It is used to formulate fiscal and monetary policies and monitor their effect on the overall economy. Business executives, labor leaders, and other private citizens use CPI as a guide to make economic decisions.
- ◆ As a means of adjusting income payments: -Many collective bargaining agreements use CPI to determine wage rates, and index various payments to adjust the effects of inflation.
- ◆ As a deflator of economic series: - CPI or its components is used as a deflator to adjust for price changes in various economic data series (e.g., GDP).



**Graph 2: Month-to-month inflation rate (Overall, Domestic and Imported)**



**Month-to-Month Inflation**

The Month-to-Month inflation for August over previous month of July was 0.68%. Food prices went up by 0.38% and Non-Food has increased by 0.89% over the previous month.

Prices for domestic goods and services increased by 0.73% on average from the previous month with corresponding price increase in food by 0.04% and non-food by 1.13%. Imported inflation recorded an increase of 0.65%. Within the imported category, food prices increased by 0.65% and non-food prices increased by 0.65%.

**Graph 3: Time Series Index Level Trend**

