

8. TRANSPORT & COMMUNICATION

Length of Road (Kms.)	2013	2014	2015
Dzongkhag roads	50.00	50.00	52
Thromde roads	1.70	1.70	1.70
Gewog connectivity roads	17.55	17.55	17.55
Farm roads	169.09	169.09	187.04
Forest roads	47.80	47.80	47.80
Motorable bridges (Nos.)	18
Non-motorable bridges (Nos.)	7
Telephone connections (Nos.)	708	646	645
Internet lease line connections (Nos.)
Internet broadband connection (Nos.)
Cable TV operators	3	3	3
Taxis (Nos.)	136	86	83
Buses operating (Nos.)	3	4	3

9. TRADE & INDUSTRIES (Nos.) 2013 2014 2015

Trade, hotels and restaurants	169
Industries
Constructions

10. TOURISM (Nos.) 2013 2014 2015

Tourists visited	11,762	12,327	12,856
------------------	--------	--------	--------

11. ELECTRICITY 2013 2014 2015

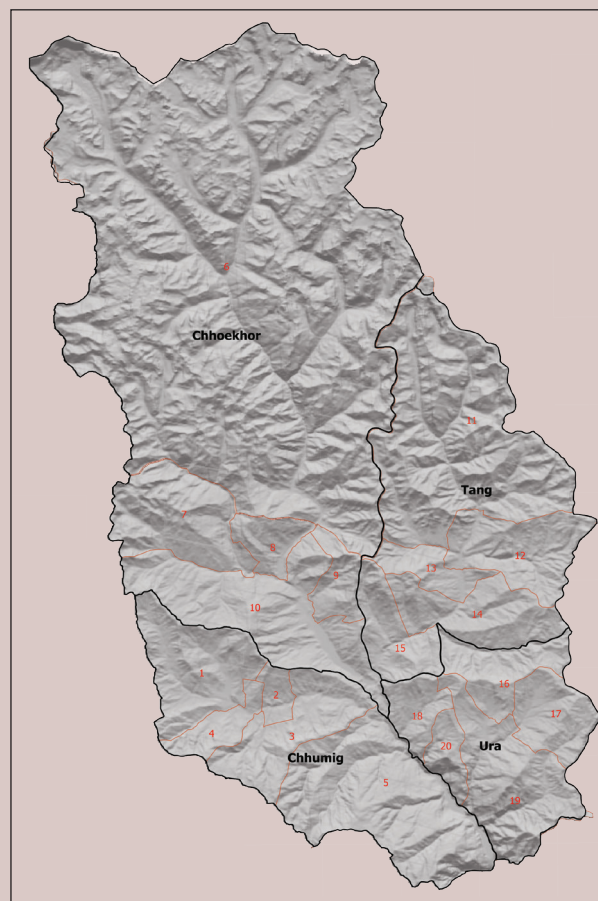
Households electrified (%)	100	100	100
Units consumed (MU)	5

12. RELIGION & CULTURE (Nos.) 2013 2014 2015

Religious institutions	26	26	26
Religious monuments	397	...	438

13. PUBLIC FINANCE- Financial Year (Mill. Nu.) 2012-13 2013-14 2014-15

Budget outlay	260.904	283.907	286.187
Current	178.485	191.544	216.608
Capital	82.419	92.363	69.579
Expenditure	254.754	283.708	285.903
Current	178.983	191.356	216.508
Capital	75.771	92.352	69.395



National Statistics Bureau

Post Box No. 338, Thimphu : Bhutan

Tel: +975-2-333296/325402/322753 Fax: +975-2-323069 www.nsb.gov.bt

ISBN 978-99936-28-39-2

Data source: Dzongkhag Statistics Section



BUMTHANG

Dzongkhag at a Glance

2016

1. GENERAL

Geographical Characteristics

Area (sq. km)	2667.76
Altitude (masl.)	2,711

Administrative Tiers (Nos.)

Dungkhags	0
Gewogs	4
Chiwogs	20
Villages	104
Gungtong	83

2. POPULATION

	2013	2014	2015
Total	18,412	18,692	18,965
Male	9,862	9,991	10,114
Female	8,550	8,701	8,851
Population density (per sq. km)	7	7	7

3. POVERTY RATE (TERMINAL)

Consumption poverty rate (%)	3.40
Multi-dimensional poverty rate (%)	1.60

4. HEALTH

Infrastructure (Nos.)

	2013	2014	2015
Hospitals	1	1	1
Indigenous units	3	3	3
Basic health units (BHUs)	5	5	5
BHU I	0	0	0
BHU II	5	5	5
Outreach clinics	12	12	12
With sheds	12	12	12
Without sheds	0	0	0
Ambulance	3	3	3

Health Personnel (Nos.)

Doctors	2	2	2
Dungtshos (Indigenous Doctor)	1	1	1
Sowai Menpa (Indigenous Medical Technicians)	4	3	3
Nurses	11	11	12
Technicians	16	16	19

Health Indicators

Infant mortality rate (Per 1,000 live births)
---	-----	-----	-----

Crude birth rate (Per 1,000 population)
Crude death rate (Per 1,000 population)
Maternal mortality rate (%)
Doctors per bed
Birth attended by trained personnel (%)	87.00	93.00	91.60
Under one immunization coverage (%)

Sanitation

Rural water supply coverage (%)	99.00	98.00	99.10
Rural population access to safe drinking water supplies (%)	99.00	98.00	99.10
Rural population access to improved sanitation (%)	99.00	98.00	99.30

5. EDUCATION

Number of educational institutes (Includes pvt. schools-Nos)

	2013	2014	2015
Tertiary institute under RUB	0	0	0
Central schools	0	0	1
Higher secondary schools	2	2	3
Middle secondary schools	3	3	1
Lower secondary schools	2	2	2
Primary schools	12	12	11
Extended class room	1	0	1
Non formal education centres	15	13	12
ECCD	3	6	7
Other institutes	1	1	1

Educational Indicators (Includes pvt. schools)

School enrolment (Nos.)	3,951	4,058	3,990
Male	1,912	2,080	1,969
Female	2,039	1,978	2,021
Teachers (Nos.)	300	275	269
Male	...	177	173
Female	...	98	96
Pupil-teacher ratio	13	15	15
NFE Instructors	15	14	15
Male	6	6	7
Female	9	8	8
NFE learners (Nos.)	117	138	136
Male	10	54	56
Female	107	84	80

6. AGRICULTURE

	2013	2014	2015
Land Registration by Type			
Dry land (acres)	2,884	2,884	2,884
Wet land (acres)	25	25	25
Orchard (acres)	12	12	12
Irrigation channels (kms)	58.00	58.03	63.03
Functional	58.00	58.03	63.03
Non-functional	0	0	0
Power tillers (Nos.)	215	215	215
Agriculture extension centres	1	1	1
Agriculture seed production farms	1	1	1
Electric fencing (Nos.)	45
Electric fencing (kms.)	63.32
Farm sales shops (Nos.)	0	1	2

Renewal Natural Resources (RNR)

RNR extension centres (Nos.)	5	5	5
------------------------------	---	---	---

Livestock (Nos.)

Veterinary hospitals	1	1	1
Livestock extension centres	4	4	4
Regional veterinary laboratories	0	0	0
Fishery farms	0	0	0
Poultry farms	3	5	5
Milk processing unit	4	5	5
Piggery farms	0	0	0

Forestry

Territorial division HQs	1	1	1
Range offices	2	2	2
Beat offices	1	1	1
Community forest (acres)	820.82	...	385.22
Nursery (Nos.)	1	1	1
Forest cover (%)	59.30	59.30	59.30
Protected areas (acres)	5,819	5,819	5,819

7. EMPLOYMENT

	2013	2014	2015
Labour force (Nos.)	7,427	7,284	...
Male	3,394	3,820	...
Female	4,033	3,464	...
Un-employed (Nos.)	310	183	...
Population involved in agriculture (%)	4.90	4.20	3.20
Un-employment rate	4.20	2.50	...
Labour force participation rate	72.70	63.40	...