

Farm roads	295.303	330.99	382
Forest roads	111.3	111.3	111.3
Motorable bridges (Nos.)	10	10	13
Non-motorable bridges (Nos.)	28	28	21
Telephone connections (Nos.)	1,148	1,031	984
Internet lease line connections (Nos.)	14	14	14
Internet broadband connection (Nos.)	1,113	1,231	1,098
Cable TV operators	5	5	9
Taxis (Nos.)	216	245	394
Buses operating (Nos.)	30	36	36

### 9. TRADE & INDUSTRIES (Nos.)

	2015	2016	2017
Trade, hotels and restaurants	825	895	959
Industries	140	110	119
Constructions	539	563	678

### 10. TOURISM (Nos.)

	2015	2016	2017
Tourists visited	233	231	284

### 11. ELECTRICITY

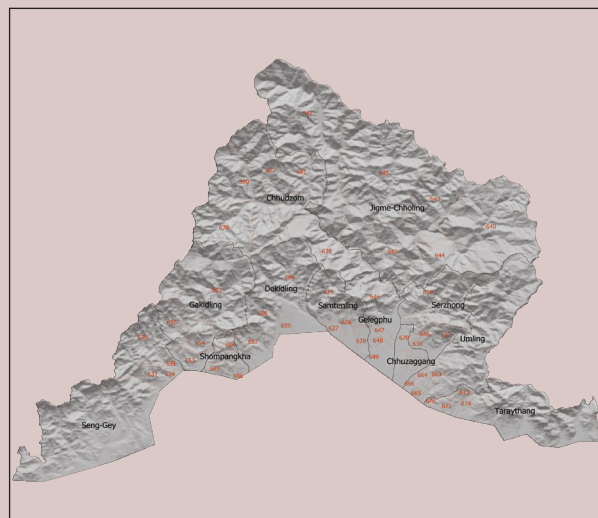
	2015	2016	2017
Households electrified (%)	10,562	10,740	12,417
Units consumed (MU)	22,859,584.5	23,765,485.4	25,865,345.5

### 12. RELIGION & CULTURE (Nos.)

	2015	2016	2017
Religious institutions	5	5	5
Religious monuments	32	38	38

### 13. PUBLIC FINANCE-Financial Year (Mill. Nu.)

	2015-16	2016-17	2017-18
Budget outlay (Revised)	608.758	922.927	855.307
Current	341.179	411.375	432.348
Capital	267.579	511.552	422.959
Expenditure	555.225	841.511	844.671
Current	339.544	405.503	431.678
Capital	215.681	436.008	412.993



# SARPANG

## Dzongkhag at a Glance

# 2018

National Statistics Bureau

Post Box No. 338, Thimphu : Bhutan

Tel: +975-2-333296/325402/322753 Fax: +975-2-323069 www.nsb.gov.bt

ISBN 978-99936-28-39-2

Data source: Dzongkhag Statistics Section

## 1. GENERAL

### Geographical Characteristics

	2017
Area (sq. km)	1,655
Altitude (masl.)	210-3600

### Administrative Tiers (Nos.)

	2017
Dungkhags	1
Gewogs	12
Chiwogs	61
Villages	149
Gungtong	28

## 2. POPULATION

	2015	2016	2017
Total	45,636	45,636	46,004
Male	23,531	23,531	24,018
Female	22,105	22,105	21,986
Population density (per sq. km)	27	27	24

## 3. POVERTY RATE (TERMINAL)

	As per PAR 2017
Consumption poverty rate (%)	12.1
Multi-dimensional poverty rate (%)	5.9

## 4. HEALTH

	2015	2016	2017
Infrastructure (Nos.)			
Hospitals	2	1	1
Indigenous Units	2	2	2
Basic Health Units (BHUs)	12	12	12
BHU I	1	2	2
BHU II	11	10	10
Outreach clinics	13	13	13
With sheds	12	11	11
Without sheds	1	2	2
Ambulance	8	8	8
Sub-pots	2	2	2
Health Personnel (Nos.)	2015	2016	2017
Doctors	13	18	30
Dungtshos (Indegenious Doctor)	3	3	3
Sowai Menpa (Indegenious Medical Technicians)	3	3	5
Nurses	78	102	110
Technicians	82	86	100

	2015	2016	2017
Health Indicators			
Infant mortality rate (Per 1,000 live births)	22	30.24	14.7
Crude birth rate (Per 1,000 population)	14	11.94	13.3

Crude death rate (Per 1,000 population)	2.99	2.74	6.4
Maternal mortality rate (%)	0	0	0
Doctors per bed	5.8	5.8	2.7
Birth attended by trained personnel (%)	95.0	94.0	96.7
Under one immunization coverage (%)	100	100	100

	2015	2016	2017
Sanitation			
Rural water supply coverage (%)	98.88	98.89	99.10
Rural population access to safe drinking water supplies (%)	98.88	98.89	99.10
Rural population access to improved sanitation (%)	98.6	98.6	75.7

## 5. EDUCATION

	2015	2016	2017
Number of educational institutes (Includes pvt. Nos)			
Tertiary institutes under RUB	0	0	0
Central schools	1	2	2
Higher secondary schools	4	3	3
Middle secondary schools	1	1	1
Lower secondary schools	7	7	7
Primary schools	11	11	11
Extended class room	3	3	3
Non-formal education centres	58	71	57
ECCD	9	12	12
Other Institutes(Zorigchusum)	2	2	2

### Educational Indicators (Includes private schools)

	2015	2016	2017
School enrolment (Nos.)	11,360	11,483	11,411
Male	5,663	5,800	5,666
Female	5,697	5,683	5,745
Teachers (Nos.)	559	565	577
Male	356	209	343
Female	203	356	234
Pupil-teacher ratio	20	21	20
NFE instructors	58	71	51
Male	22	23	14
Female	36	48	37
NFE learners (Nos.)	675	945	699
Male	130	257	184
Female	545	688	515

## 6. AGRICULTURE

	2015	2016	2017
Land Registration by Type			
Dry land (acres)	3,473	3,473	3,473
Wet land (acres)	2,088	2,088	2,088

Orchard (acres)	1,093	1,093	1,093
Irrigation channels (kms)	390.36	403.56	418.16
Functional	370.39	383.59	418.16
Non- functional	19.97	19.97	0
Power tillers (Nos.)	104	104	160
Agriculture extension centres	0	0	0
Agriculture seed production farms	1	1	1
Electric fencing (Nos.)	29	45	84
Electric fencing (kms.)	81.601	157.493	183
Farm sales shops (Nos.)	2	12	12

	2015	2016	2017
Renewal Natural Resources (RNR)			
RNR extension centres (Nos.)	10	12	12

	2015	2016	2017
Livestock (Nos.)			
Veterinary hospitals	1	1	1
Livestock extension centres	1	0	0
Regional veterinary laboratories	1	1	1
Fishery farms	51	52	60
Poultry farms	120	127	207
Milk processing unit	2	2	3
Piggery farms	13	20	56

	2015	2016	2017
Forestry			
Territorial Division HQs	1	1	1
Range offices	2	2	2
Beat offices	2	2	2
Community forest (acreaes)	2344.72	2344.72	2344.72
Nursery (Nos.)	5	5	7
Forest cover (%)	88	88	88
Protected areas (areas)	415.39	415.39	415.39

## 7. EMPLOYMENT

	2015	2016	2017
Labour force (Nos.)	24,682	24,371	21,158
Male	12,739	14,009	13,734
Female	11,943	10,362	7,424
Un-employed (Nos.)	358	923	497
Population involved in agriculture (%)	66.58	40.54	44.8
Un-employment rate	1.4	3.8	2.3
Labour force participation rate	51.01	62.70	60.80

## 8. TRANSPORT & COMMUNICATION

	2015	2016	2017
Length of road (Kms.)	556.20	591.89	644.10
Dzongkhag roads	40.3	40.3	40.3
Thromde roads	14.60	14.60	15.80
Gewog connectivity roads	94.70	94.70	94.70