

8. TRANSPORT & COMMUNICATION

	2013	2014	2015
Length of Road (Kms.)			
Dzongkhag roads	41	41	51.92
Thromde roads	7.32	7.32	7.32
Gewog connectivity roads			
Farm roads	242.61	242.61	303.74
Forest roads	11.5	11.5	11.66
Motorable bridges (Nos.)			
Non-motorable bridges (Nos.)	27	27	29
Telephone connections (Nos.)	700	1,063	
Internet lease line connections (Nos.)	300	380	
Internet broadband connection (Nos.)			
Cable TV operators	4	4	4
Taxis (Nos.)	0	43	
Buses operating (Nos.)	9	8	

9. TRADE & INDUSTRIES (Nos.) 2013 2014 2015

Trade, hotels and restaurants	102	131	0
Industries	0	0	0
Constructions			

10. TOURISM (Nos.) 2013 2014 2015

Tourists visited	2,064	2,056	2,164
------------------	-------	-------	-------

11. ELECTRICITY 2013 2014 2015

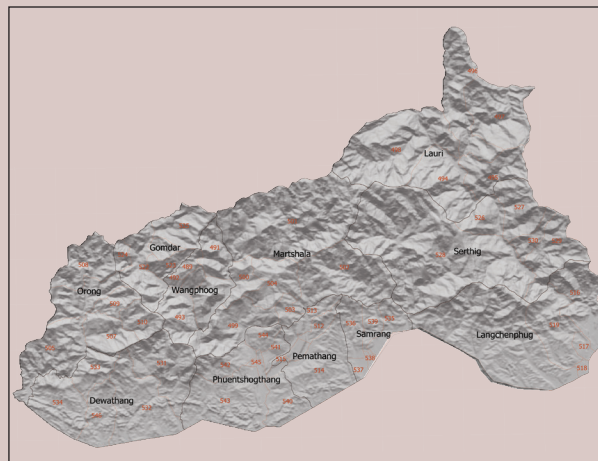
Households electrified (%)	78.74	79.78	98.52
Units consumed (MU)	90.32	130.10	198.99

12. RELIGION & CULTURE (Nos.) 2013 2014 2015

Religious institutions
Religious monuments

13. PUBLIC FINANCE- 2013 2014 2015

Financial Year (Mill. Nu.)	2012-13	2013-14	2014-15
Budget outlay	521.45	505.55	523.96
Current	297.20	303.98	350.48
Capital	224.25	201.56	173.47
Expenditure	514.35	474.99	507.80
Current	296.08	283.88	343.56
Capital	218.28	191.11	164.24



National Statistics Bureau

Post Box No. 338, Thimphu : Bhutan

Tel: +975-2-333296/325402/322753 Fax: +975-2-323069 www.nsb.gov.bt

ISBN 978-99936-28-39-2

Data source: Dzongkhag Statistics Section



SAMDRUP JONGKHAR

Dzongkhag at a Glance

2016

1. GENERAL**Geographical Characteristics**

Area (sq. km)	1,877.94
Altitude (masl.)	250-1,900

Administrative Tiers (Nos.)

Dungkhags	2
Gewogs	11
Chiwogs	58
Villages	191
Gungtong	

2. POPULATION

	2013	2014	2015
Total	39,405	40,097	40,766
Male	20,134	20,466	20,786
Female	19,271	19,631	19,980
Population density (per sq. km)	21.0	21.4	21.7

3. POVERTY RATE (TERMINAL)

Consumption poverty rate (%)	21
Multi-dimensional poverty rate (%)	16.4

4. HEALTH**Infrastructure (Nos.)**

	2013	2014	2015
Hospitals	2	2	2
Indigenous units	5	5	5
Basic health units (BHUs)			
BHU I	3	3	3
BHU II	7	7	7
Outreach clinics			
With sheds	27	28	28
Without sheds	4	4	4
Ambulance	9	9	9

Health Personnel (Nos.)

Doctors	4	4	6
Dungtshos (Indigenous Doctor)	1	1	1
Sowai Menpa (Indigenous Medical Technicians)	5	5	5
Nurses	12	18	36
Technicians	15	26	42

Health Indicators

Infant mortality rate (Per 1,000 live births)	28.10	26.00	29.10
---	-------	-------	-------

Crude birth rate (Per 1,000 population)	25.20	22.10	25.30
Crude death rate (Per 1,000 population)	2.90	3.90	3.80
Maternal mortality rate (%)	0.00	0.00	0.20
Doctors per bed	0.10	0.20	0.10
Birth attended by trained personnel (%)	63.70	79.50	90.80
Under one immunization coverage (%)	90.20	92.30	97.00

Sanitation

Rural water supply coverage (%)			
Rural population access to safe drinking water supplies (%)	96.00	98.60	99.20
Rural population access to improved sanitation (%)	97.00	93.80	96.00

5. EDUCATION**Number of educational institutes (Includes pvt. schools-Nos)**

	2013	2014	2015
Tertiary institute under RUB	1	1	1
Central schools	0	2	2
Higher secondary schools	3	3	3
Middle secondary schools	8	6	6
Lower secondary schools	2	2	2
Primary schools	22	22	22
Extended class room	5	5	5
Non formal education centres	49	39	38
ECCD	10	10	10
Other institutes	1	1	1

Educational Indicators (Includes pvt. schools)

School enrolment (Nos.)	9,167	9,207	9,163
Male	4,451	4,568	4,528
Female	4,716	4,639	4,635
Teachers (Nos.)	409	419	427
Male	260	281	280
Female	149	138	147
Pupil-teacher ratio	22:1	21:1	21:1
NFE instructors	61	38	37
Male	13	12	13
Female	48	26	24
NFE learners (Nos.)	635	297	204
Male	191	34	45
Female	444	263	159

6. AGRICULTURE**Land Registration by Type**

	2013	2014	2015
Dry land (acres)	15,104	15,104	15,104
Wet land (acres)	2,485	2,485	2,485
Orchard (acres)	1,066	1,066	1,066
Irrigation channels (kms)			
Functional	80	91	103
Non-functional			
Power tillers (Nos.)	27	38	45
Agriculture extension centres			
Agriculture seed production farms			
Electric fencing (Nos.)	4	6	19
Electric fencing (kms.)	15.29	20.89	76.4
Farm sales shops (Nos.)	0	0	4

Renewal Natural Resources (RNR)

RNR extension centres (Nos.)	10	10	10
------------------------------	----	----	----

Livestock (Nos.)

Veterinary hospitals	1	1	1
Livestock extension centres	1	1	1
Regional veterinary laboratories	1	1	1
Fishery farms	2	2	2
Poultry farms	18	18	21
Milk processing unit	7	7	10
Piggery farms	1	1	1

Forestry

Territorial division HQs	1	1	1
Range offices	3	3	3
Beat offices	2	2	2
Community forest (acres)	553.78	553.78	1,182.23
Nursery (Nos.)	2	3	3
Forest cover (%)	87	87	87
Protected areas (acres)	82,716.06	82,716.06	82,716.06

7. EMPLOYMENT

	2013	2014	2015
Labour force (Nos.)	19,515	18,467	17,520
Male	10,062	10,311	10,340
Female	9,453	8,156	7,180
Un-employed (Nos.)	78	486	88
Population involved in agriculture (%)	12,004	11,456	66.9
Un-employment rate	0.4	2.6	0.5
Labour force participation rate	72.4	63.4	56.6