

National Highways	0	0	0
Primary National Highway (Nanglam)	98	98	120
Secondary National Highway	75	75	128
Dzongkhag Roads (Gewog Connectivity Roads)	53	143	143
Thromde Roads	3	3	3
Farm Roads	321	353	361
Forest Roads	0	0	0
Motorable Bridges (Nos.)	19	20	20
Non-Motorable Bridges (Nos.)	11	11	11
Telephone Connections (Nos.)	450	415	389
Internet Lease Line Connections (Nos.)	...	135	149
Internet Broadband Connection (Nos.)	...		
Cable TV operators	2	2	2
Taxis (Nos.)	3	3	2
Buses Operating (Nos.)	0	1	1

9. TRADE & INDUSTRIES (Nos.)

	2015	2016	2017
Trade, Hotels and restaurants	21	106	106
Industries	55	56	56
Constructions	51	43	43

10. TOURISM (Nos.)

	2015	2016	2017
Tourists visited	68	66	71

11. ELECTRICITY

	2015	2016	2017
Households Electrified (%)	98	99.2	99.8
Units Consumed (MU)

12. RELIGION & CULTURE (Nos.)

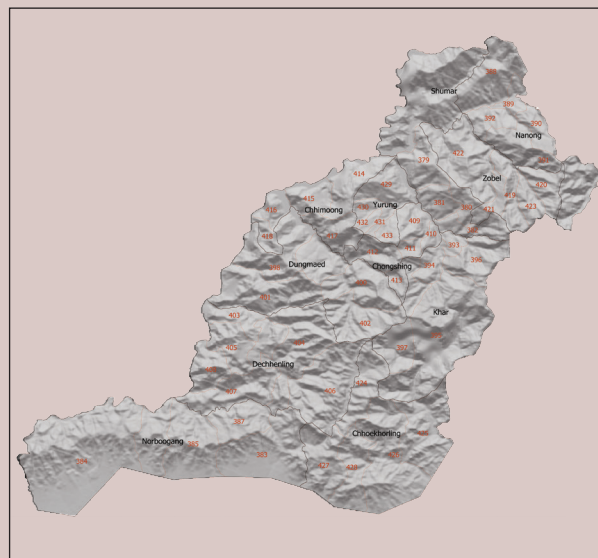
	2015	2016	2017
Religious Institutions	2	2	2
Religious Monuments (only lhakhang)	121	121	121

13. PUBLIC FINANCE-Financial Year (Mill. Nu.)

Budget Outlay (11FYP 2013-2017)

Current			...
Capital			604.11
Expenditure	2015/16	2016/17	2017/18
Current	312.02	400.578	401.719
Capital	212.45	300.302	265.992
APA Achievement %	96	94.9	98.7

Note: Rural population access to improved sanitation (%) based on flush toilet



National Statistics Bureau

Post Box No. 338, Thimphu : Bhutan

Tel: +975-2-333296/325402/322753 Fax: +975-2-323069 www.nsb.gov.bt

ISBN 978-99936-28-39-2

Data source: Dzongkhag Statistics Section



PEMAGATSHEL

Dzongkhag at a Glance

2018

1. GENERAL

Geographical Characteristics

	2018
Area (sq. km)	1,022
Altitude (masl.)	500-3000+

Administrative Tiers (Nos.)

Dungkhags	1
Gewogs	11
Chiwogs	56
Villages	252
Household	6075
Institutional Household	108
Gungtong	909

2. POPULATION

	2017
Total	23632
Male	11922
Female	11710
Population density (per sq. km)	23

3. POVERTY RATE (TERMINAL)

Consumption Poverty Rate (2017)	13.7
Multi-dimensional Poverty Rate (2012)	11.6
GNH Index	0.77
Monthly Household Income (Average)	12901

4. HEALTH

Infrastructure (Nos.)	2016	2017	2018
Hospitals	1	1	1
Indigenous Units	4	4	4
Basic Health Units (BHUs)			
BHU I	1	1	1
BHU II	11	11	11
Sub-post	7	7	7
Outreach Clinics			
With Sheds	32	32	32
Without Sheds	4	4	4
Ambulance	6	7	7
Health Personnel (Nos.)	2016	2017	2018
Doctors	2	3	4
Dungtshos (Indegenious Doctor)	1	1	1
Sowai Menpa (Indegenious Medical Technicians)	4	4	4
Nurses	15	16	16
Health Assistants	..	32	31
Technicians	20	21	21
Health Indicators	2015	2016	2017

Infant Mortality (in number)	11	7	27
Crude Birth Rate (Per 1,000 population)	16.6	13	14
Crude Death Rate (Per 1,000 population)	4.6	6	8
Maternal Mortality Rate (%)	0	0	0
Doctors per bed	6	23	18
Birth attended by trained personnel (%)	80	90	97
Under one immunization coverage (%)	100	100	100

Sanitation

	2015	2016	2017
Rural water supply coverage (%)	100	100	100
Rural population access to safe drinking water supplies (%)	97	98	99
Rural population access to improved sanitation (%)	98	99	78

5. EDUCATION

Number of educational institutes (Includes pvt. Nos)

	2016	2017	2018
Tertiary Institute under RUB			
Central Schools	4	4	4
Higher Secondary Schools	0	0	0
Middle Secondary Schools	1	1	1
Lower Secondary Schools	3	3	3
Primary Schools	15	14	14
Extended Class Room	10	9	9
Non Formal Education Centres (NFE)	61	48	48
Early Child Care and Development Centres	10	12	12
Other Institutes(Includes special institutes, vocational institutes & sankrit patshala)	0	0	0

Educational Indicators (Includes private schools)

	2016	2017	2018
School enrolment (Nos.)	6,125	5,801	5,868
Male	3,086	2,923	2,872
Female	3,039	2,878	2,996
Teachers (Nos.)	350	331	339
Male	245	245	257
Female	105	86	82
Pupil-teacher Ratio	15	18	17
NFE Instructors	63	61	48
Male	20	13	10
Female	43	48	38
NFE learners (Nos.)	612	501	441
Male	121	411	344
Female	491	90	97
Literacy rate	62.9

6. AGRICULTURE

Land Registration by Type

	2016/17	2016/17	2017/18
Dry land (acres)	10700	10700	12061
Wet land (acres)	356	356	217
Orchard (acres)	2335.4	2335.4	2335.4
Irrigation channels (kms)	25.07	25.07	25.07
Functional	1.94	1.94	1.94
Non- functional	23.13	23.13	23.13
Power tillers (Nos.)	52	52	52
Agriculture Extension Centres	11	11	11
Agriculture Seed Production Farms	0	0	0
Electric fencing (Nos.)	27	27	27
Electric fencing (kms.)	87.59	87.59	87.6
Farm sales shops (Nos.)	11	11	11

Renewal Natural Resources (RNR)

	2016	2017	2018
RNR extension Centres (Nos.)	11	11	11
Livestock (Nos.)	2016	2017	2018
Veterinary Hospitals	1	1	1
Livestock Extension Centres	11	11	11
Regional Veterinary Laboratories (RLDC)	0	0	0
Bio-gas plants	187
Fishery Farms (group)	2	3	3
Poultry farms (group)	26	28	28
Milk processing unit	5	5	5
Piggery farms (group)	14	19	19

Forestry

	2015/16	2016/17	2017/18
Territorial Division HQs	0	0	0
Range Offices	2	2	2
Beat Offices	3	3	3
Community Forest (acres)	...	11936.44	11936.44
Nursery (Nos.)	4	4	4
Forest Cover (%)	87.7	87.7	87.7
Protected Areas (Sq.Km)	1.636	1.636	211.898

7. EMPLOYMENT

	2013	2014	2015
Labour Force (Nos.)	...	14742	15,266
Male	...	7622	7,862
Female	...	7120	7,404
Un-employed (Nos.)	...	119	26
Population Involved in Agriculture (%)	...	71.7	77
Un-Employment Rate	...	0.8	0.3
Labour Force Participation Rate	...	63.4	67.3

8. TRANSPORT & COMMUNICATION

	2015/16	2016/17	2017/18
Length of Road (Kms.)	550	672	756