

8. TRANSPORT & COMMUNICATION

Length of Road (Kms.)	2013	2014	2015
Dzongkhag roads	99.0	99.0	99.0
Thromde roads	8.2	8.3	8.3
Gewog connectivity roads	132.9	132.9	132.9
Farm roads	112.6	168.4	172.3
Forest roads	15.3	15.3	15.3
Motorable bridges (Nos.)	14	14	14.0
Non-motorable bridges (Nos.)	19	20	20.0
Telephone connections (Nos.)	711	438	...
Internet lease line connections (Nos.)
Internet broadband connection (Nos.)	515	438	...
Cable TV operators	3	4	5.0
Taxis (Nos.)	60	90	95.0
Buses operating (Nos.)	17	23	18.0

9. TRADE & INDUSTRIES (Nos.)

	2013	2014	2015
Trade, hotels and restaurants	1,831	458	434
Industries	73	111	15
Constructions	165	18	18

10. TOURISM (Nos.)

	2013	2014	2015
Tourists visited	5	3	3

11. ELECTRICITY

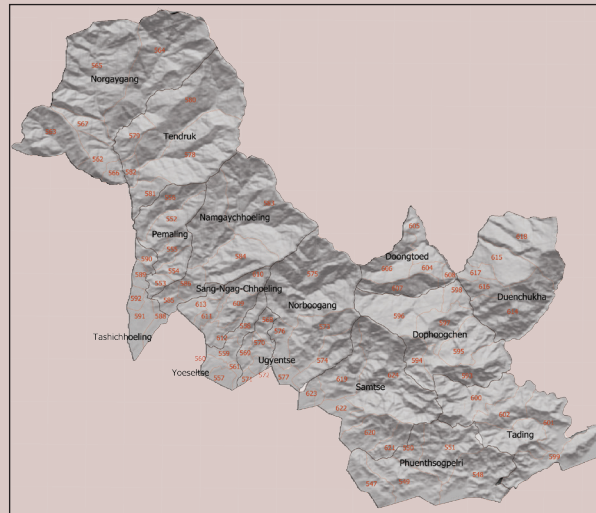
	2013	2014	2015
Households electrified (%)	95.0	97.5	99.0
Units consumed (MU)	0	0	0

12. RELIGION & CULTURE (Nos.)

	2013	2014	2015
Religious institutions	9	10	10
Religious monuments	25	25	25

13. PUBLIC FINANCE-

Financial Year (Mill. Nu.)	2013	2014	2015
2012-13	2013-14	2014-15	
Budget outlay	837.281	721.511	804.950
Current	427.997	447.360	555.594
Capital	409.284	274.151	249.356
Expenditure	751.510	660.200	465.330
Current	425.520	444.020	245.550
Capital	325.990	216.180	219.780



SAMTSE

Dzongkhag at a Glance

2016

National Statistics Bureau

Post Box No. 338, Thimphu : Bhutan

Tel: +975-2-333296/325402/322753 Fax: +975-2-323069 www.nsb.gov.bt

ISBN 978-99936-28-39-2

Data source: Dzongkhag Statistics Section

1. GENERAL**Geographical Characteristics**

Area (sq. km)	1,309.1
Altitude (masl.)	200 - 4,400

Administrative Tiers (Nos.)

Dungkhags	2
Gewogs	15
Chiwogs	77
Villages	316
Gungtong	65

2. POPULATION

	2013	2014	2015
Total	68,579	69,612	70,618
Male	35,343	35,850	36,344
Female	33,235	33,762	34,274
Population density (per sq. km)	52	53	54

3. POVERTY RATE (TERMINAL)

Consumption poverty rate (%)	22.2
Multi-dimensional poverty rate (%)	0.07

4. HEALTH**Infrastructure (Nos.)**

	2013	2014	2015
Hospitals	7	7	9
Indigenous units	1	1	3
Basic health units (BHUs)	2	3	4
BHU I	36	46	47
BHU II	41	46	49
Outreach clinics			
With sheds	44	43	46
Without sheds		5	4
Ambulance	5	5	5

Health Personnel (Nos.)

Doctors	7	7	9
Dungtshos (Indigenous Doctor)	1	1	3
Sowai Menpa (Indigenous Medical Technicians)	2	3	4
Nurses	36	46	47
Technicians	41	46	49

Health Indicators

Infant mortality rate (Per 1,000 live births)	14.4	18.9	22.3
---	------	------	------

Crude birth rate (Per 1,000 population)	16.5	15.1	14.3
Crude death rate (Per 1,000 population)	4.0	4.1	4.4
Maternal mortality rate (%)	0.1	-	0.1
Doctors per bed	0.1	0.1	0.1
Birth attended by trained personnel (%)	2.6	0.8	2.7
Under one immunization coverage (%)	98.0	99.6	99.5

Sanitation

Rural water supply coverage (%)	98.1	98.2	98.9
Rural population access to safe drinking water supplies (%)	96.7	96.8	96.3
Rural population access to improved sanitation (%)	97.1	96.1	98.5

5. EDUCATION**Number of educational institutes (Includes pvt. schools-Nos)**

	2013	2014	2015
Tertiary institute under RUB	1	1	1
Central schools			1
Higher secondary schools	3	3	3
Middle secondary schools	3	3	2
Lower secondary schools	7	7	7
Primary schools	20	20	19
Extended class room	22	22	21
Non formal education centres	67	67	66
ECCD	8	10	10
Other Institutes(Zorigchusum)

Educational Indicators (Includes pvt. schools)

School enrolment (Nos.)	15,896	15,779	15,735
Male	8,161	8,094	8,018
Female	7,735	7,685	7,717
Teachers (Nos.)	546	585	617
Male	337	359	391
Female	209	226	226
Pupil-teacher ratio	29:1	27:1	25:1
NFE instructors	71	69	71
Male	32	37	37
Female	39	32	34
NFE learners (Nos.)	945	986	967
Male	313	323	308
Female	632	663	659

6. AGRICULTURE**Land Registration by Type**

	2013	2014	2015
Dry land (acres)	20,141.56
Wet land (acres)	14,040.52
Orchard (acres)	8,730.23
Irrigation channels (kms)			
Functional	55.26
Non-functional	8.83
Power tillers (Nos.)	...	3	15
Agriculture extension centres	15	15	15
Agriculture seed production farms
Electric fencing (Nos.)	1
Electric fencing (kms.)	2
Farm sales shops (Nos.)

Renewal Natural Resources (RNR)

RNR extension centres (Nos.)	15	15	15
------------------------------	----	----	----

Livestock (Nos.)

Veterinary hospitals	1	1	1
Livestock extension centres	15	15	15
Regional veterinary laboratories	1	1	1
Fishery farms	...	20	69
Poultry farms	...	78	94
Milk processing unit	1
Piggery farms	...	35	64

Forestry

Territorial division HQs	1	1	1
Range offices	4	4	4
Beat offices	7	7	5
Community forest (acres)	289.36	113.67	2560.31
Nursery (Nos.)			
Forest cover (%)	77	77	77
Protected areas (acres)

7. EMPLOYMENT

	2013	2014	2015
Labour force (Nos.)			
Male	20,476	21,502	22,288
Female	11,755	17,366	16,311
Un-employed (Nos.)	484	709.0	296.0
Population involved in agriculture (%)	28.1	69.2	66.0
Un-employment rate	1.5	1.8	1.2
Labour force participation rate	57.5	73.2	52.7