

## 8. TRANSPORT & COMMUNICATION

Length of Road (Kms.)	2013	2014	2015
Dzongkhag roads	59.500	59.500	59.500
Thromde roads	47.300	47.300	47.300
Gewog connectivity roads	19.000	30.000	31.000
Farm roads	62.880	70.120	82.020
Forest roads	-	-	-
Motorable bridges (Nos.)	16	16	16
Non-motorable bridges (Nos.)	56	59	61
Telephone connections (Nos.)	754	482	540
Internet lease line connections (Nos.)	...	...	...
Internet broadband connection (Nos.)	...	...	...
Cable TV operators	2	2	2
Taxis (Nos.)	...	...	...
Buses operating (Nos.)	...	...	...

## 9. TRADE & INDUSTRIES (Nos.) 2013 2014 2015

Trade, hotels and restaurants	...	...	179
Industries	...	...	108
Constructions	...	...	25

## 10. TOURISM (Nos.) 2013 2014 2015

Tourists visited	41,594	55,383	...
------------------	--------	--------	-----

## 11. ELECTRICITY 2013 2014 2015

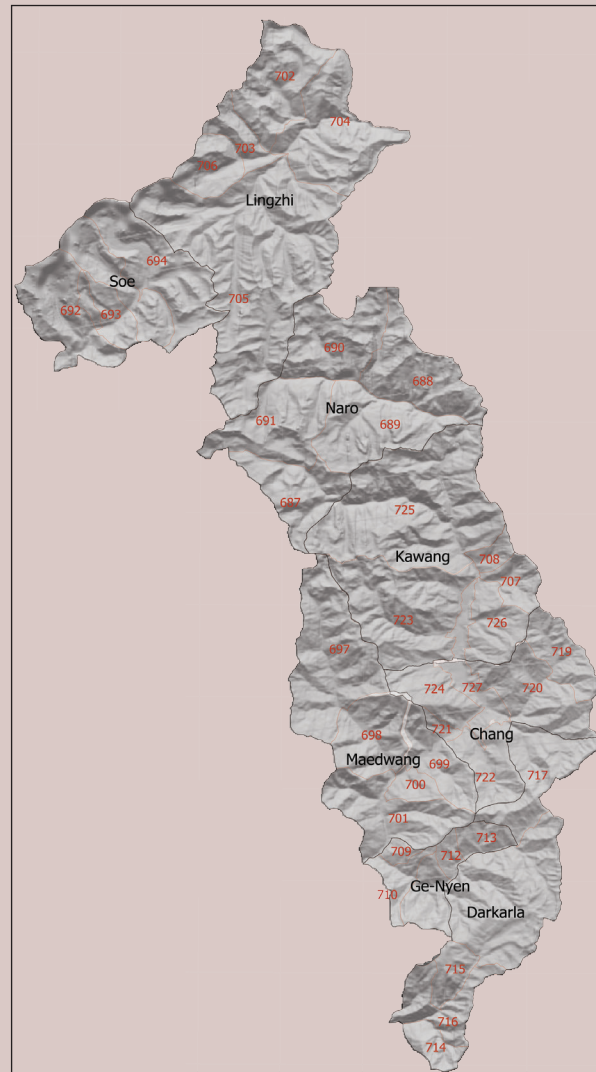
Households electrified (%)	100.0	100.0	100.0
Units consumed (MU)	...	...	...

## 12. RELIGION & CULTURE (Nos.) 2013 2014 2015

Religious institutions	91	92	92
Religious monuments	353	353	353

## 13. PUBLIC FINANCE- 2013 2014 2015

Financial Year (Mill. Nu.)	2012-13	2013-14	2014-15
Budget outlay	478.042	350.94	338.272
Current	191.887	197.572	209.683
Capital	286.155	153.368	128.589
Expenditure	452.039	339.47	323.536
Current	190.749	189.047	206.261
Capital	261.29	150.423	117.275



THIMPHU

Dzongkhag at a Glance

2016

National Statistics Bureau

Post Box No. 338, Thimphu : Bhutan

Tel: +975-2-333296/325402/322753 Fax: +975-2-323069 www.nsb.gov.bt

ISBN 978-99936-28-39-2

Data source: Dzongkhag Statistics Section

## 1. GENERAL

### Geographical Characteristics

Area (sq. km)	1,795.868
Altitude (masl.)	2,330

### Administrative Tiers (Nos.)

Dungkhags	1
Gewogs	8
Chiwogs	40
Villages	194
Gungtong	5

## 2. POPULATION

	2013	2014	2015
Total	111,307	113,669	116,012
Male	59,910	61,140	62,365
Female	51,397	52,529	53,647
Population density (per sq. km)	62.0	63.3	64.6

## 3. POVERTY RATE (TERMINAL)

Consumption poverty rate (%)	0.5
Multi-dimensional poverty rate (%)	1.6

## 4. HEALTH

### Infrastructure (Nos.)

	2013	2014	2015
Hospitals	1	1	1
Indigenous units	1	1	1
Basic health units (BHUs)			
BHU I	...	...	...
BHU II	6	8	8
Outreach clinics			
With sheds	4	5	5
Without sheds	2	2	2
Ambulance	1	1	1

### Health Personnel (Nos.)

Doctors	2	3	2
Dungtshos (Indigenous Doctor)	...	...	...
Sowai Menpa (Indigenous Medical Technicians)	1	1	2
Nurses	16	18	20
Technicians	12	12	14

### Health Indicators

Infant mortality rate (Per 1,000 live births)	9.2	11.9	29.8
-----------------------------------------------	-----	------	------

Crude birth rate (Per 1,000 population)	16.5	12.6	15.6
Crude death rate (Per 1,000 population)	2.7	2.2	2.5
Maternal mortality rate (%)	0	0	0
Doctors per bed	...	...	...
Birth attended by trained personnel (%)	94.5	97.6	98.0
Under one immunization coverage (%)	92.7	98.8	94.5

### Sanitation

Rural water supply coverage (%)	97.2	98.0	...
Rural population access to safe drinking water supplies (%)	98.9	99.1	...
Rural population access to improved sanitation (%)	97.1	98.8	...

## 5. EDUCATION

### Number of educational institutes (Includes pvt. schools-Nos)

	2013	2014	2015
Tertiary institute under RUB	0	0	0
Central schools	...	...	1
Higher secondary schools	1	1	1
Middle secondary schools	2	2	2
Lower secondary schools	2	2	1
Primary schools	6	6	6
Extended class room	2	2	2
Non formal education centres	15	15	12
ECCD	5	5	6
Other institutes	...	...	...

### Educational Indicators (Includes pvt. schools)

School enrolment (Nos.)	...	3,095	3,273
Male	...	1,519	1,598
Female	...	1,576	1,675
Teachers (Nos.)	...	190	206
Male	...	115	127
Female	...	75	79
Pupil-teacher ratio	...	16:1	16:1
NFE instructors	...	15	11
Male	...	7	5
Female	...	8	6
NFE learners (Nos.)	...	154	140
Male	...	75	67
Female	...	79	73

## 6. AGRICULTURE

### Land Registration by Type

	2013	2014	2015
Dry land (acres)	2,872.3	2,880.03	2,880.03
Wet land (acres)	799.5	799.53	799.53
Orchard (acres)	638.2	638.71	638.71
Irrigation channels (kms)			
Functional	34	35	47
Non-functional	...	...	...
Power tillers (Nos.)	70	70	78
Agriculture extension centres	1	1	1
Agriculture seed production farms	...	...	...
Electric fencing (Nos.)	1	3	15
Electric fencing (kms.)	1.000	3.200	24.290
Farm sales shops (Nos.)	...	...	...

### Renewal Natural Resources (RNR)

RNR extension centres (Nos.)	5	5	5
------------------------------	---	---	---

### Livestock (Nos.)

Veterinary hospitals	1	1	1
Livestock extension centres	3	3	3
Regional veterinary laboratories	...	...	...
Fishery farms	...	...	...
Poultry farms	...	...	...
Milk processing unit	...	...	...
Piggery farms	...	...	...

### Forestry

Territorial division HQs	1	1	1
Range offices	4	4	4
Beat offices	3	3	3
Community forest (acres)	6,775.40	6,775.40	6,775.40
Nursery (Nos.)	2	2	2
Forest cover (%)	64.3	64.3	64.3
Protected areas (acres)	846	846	846

## 7. EMPLOYMENT

	2013	2014	2015
Labour force (Nos.)	41,801	41,989	45,621
Male	25,078	26,469	26,946
Female	16,723	15,520	18,675
Un-employed (Nos.)	3,655	3,818	...
Population involved in agriculture (%)	...	...	...
Un-employment rate	8.0	8.3	...
Labour force participation rate	58.0	55.5	...