

Un-employed (Nos.)	183	...	427
Population Involved in Agriculture (%)	4.2	3.20	3.20
Un-Employment Rate	2.5	...	0.8
Labour Force Participation Rate	63.4	...	61.0

8. TRANSPORT & COMMUNICATION

Length of Road (Kms.)	2015	2016	2017
Dzongkhag Roads	52	46.4	46.4
Thromde Roads	1.7	1.7	1.7
Gewog Connectivity Roads	17.6	17.9	17.87
Farm Roads	187	182.3	205.07
Forest Roads	47.8	47.8	56.2
Motorable Bridges (Nos.)	...	21	21
Non-Motorable Bridges (Nos.)	...	7	7
Telephone Connections (Nos.)	645	445	430
Internet Lease Line Connections (Nos.)	...	30	36
Internet Broadband Connection (Nos.)	...	290	274
Cable TV operators	3	3	5
Taxis (Nos.)	83	95	99
Buses Operating (Nos.)	3	3	3

9. TRADE & INDUSTRIES (Nos.)

	2015	2016	2017
Trade, Hotels and restaurants	...	40	215
Industries	...	172	132
Constructions	...	356	104

10. TOURISM (Nos.)

	2015	2016	2017
Tourists visited	12,856	12,275	11,321

11. ELECTRICITY

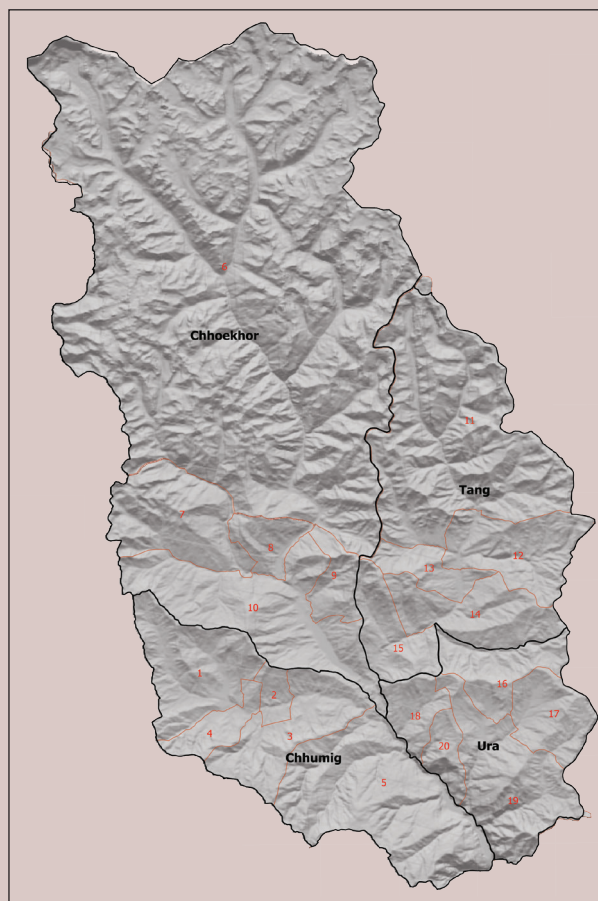
	2015	2016	2017
Households Electrified (%)	100	100	100
Units Consumed (MU)	...	9.94	9.86

12. RELIGION & CULTURE (Nos.)

	2015	2016	2017
Religious Institutions	26	26	26
Religious Monuments (only lhakhang)	...	88	117

13. PUBLIC FINANCE-Financial Year (Mill. Nu.)

	2015	2016	2017
Budget Outlay (11FYP 2013-2017)			
Current
Capital	...	618.926	...
Expenditure	2015/16	2016/17	2017/18
Current	209.445	275.243	362.071
Capital	189.265	315.897	480.401



National Statistics Bureau

Post Box No. 338, Thimphu : Bhutan

Tel: +975-2-333296/325402/322753 Fax: +975-2-323069 www.nsb.gov.bt

ISBN 978-99936-28-39-2

Data source: Dzongkhag Statistics Section



BUMTHANG

Dzongkhag at a Glance

2018

1. GENERAL

Geographical Characteristics

	2017
Area (sq. km)	1,879.5
Altitude (masl.)	200-3500

Administrative Tiers (Nos.)

Dungkhags	0
Gewogs	4
Chiwogs	20
Villages	104
Household	3770

As per DAG 2017

Institutional Household	83
Gungtong	14

As per PHCB 2017

Total	2017
Male	17820
Female	9396
Population density (per sq. km)	8424
	9

3. POVERTY RATE (TERMINAL)

	As per PAR 2012		
Consumption Poverty Rate (%)	2.1		
Multi-dimensional Poverty Rate (%)	1.6		

4. HEALTH

Infrastructure (Nos.)

	2015	2016	2017
Hospitals	1	1	1
Indigenous Units	3	3	3
Basic Health Units (BHUs)	5	5	5
BHU I	0	0	0
BHU II	5	5	5
Sub-post	0	0	0
Outreach Clinics	12	12	12
With Sheds	0	0	12
Without Sheds	0	0	0
Ambulance	3	3	3

Health Personnel (Nos.)

Doctors	2	3	3
Dungtshos (Indegenious Doctor)	1	2	2
Sowai Menpa (Indegenious Medical Technicians)	3	4	4
Nurses	12	13	15
Technicians	16	15	14

Health Indicators

	2015/16	2016/17	2017/18
Infant Mortality (in number)	...	3	2
Crude Birth Rate (Per 1,000 population)	...	23	19
Crude Death Rate (Per 1,000 population)	...	4	1.2
Maternal Mortality Rate (%)	...	0	0
Doctors per bed	...	9	9
Birth attended by trained personnel (%)	91	98	96
Under one immunization coverage (%)	...	100	100

Sanitation

	2015	2016	2017
Rural water supply coverage (%)	99.1	100%	100%
Rural population access to safe drinking water supplies (%)	99	100%	100%
Rural population access to improved sanitation (%)	99	100%	100%

5. EDUCATION

Number of educational institutes (Includes pvt. Nos)

	2015	2016	2017
Tertiary Institute under RUB			
Central Schools	1	3	3
Higher Secondary Schools	3	2	1
Middle Secondary Schools	1	0	0
Lower Secondary Schools	2	2	1
Primary Schools	11	12	11
Extended Class Room	1	1	
Non Formal Education Centres (NFE)	12	10	12
Early Child Care and Development Centres	7	9	9
Other Institutes(Includes special institutes, vocational institutes & sankrit patshala)	1	1	1

Educational Indicators (Includes private schools)

	2015	2016	2017
School enrolment (Nos.)	3,990	3,992	4,031
Male	1,969	1,966	1,982
Female	2,021	2,026	2,049
Teachers (Nos.)	269	258	252
Male	173	171	163
Female	96	87	89
Pupil-teacher Ratio	15	1	1:15
NFE Instructors	14	10	13

Male	6	6	6
Female	8	4	4
NFE learners (Nos.)	138	98	121
Male	56	35	27
Female	80	63	94

6. AGRICULTURE

Land Registration by Type

	2015	2016	2017
Dry land (acres)	2884	2232.56	15200.0
Wet land (acres)	25	155	160.0
Orchard (acres)	12	40.39	107.5
Irrigation channels (kms)	63.03	55.9	58.2
Functional	63.03	55.9	58.2
Non- functional	0	0	0
Power tillers (Nos.)	215	219	221
Agriculture Extension Centres	1	1	1
Agriculture Seed Production Farms	1	1	1
Electric fencing (Nos.)	45	101	182
Electric fencing (kms.)	63.32	138.2	251.7
Farm sales shops (Nos.)	2	2	3

Renewal Natural Resources (RNR)

	2015	2016	2017
RNR extension Centres (Nos.)	5	5	5

Livestock (Nos.)

	2015	2016	2017
Veterinary Hospitals	1	1	1
Livestock Extension Centres	4	4	4
Regional Veterinary Laboratories (RLDC)	0	0	
Fishery Farms (group)	0	0	0
Poultry farms (group)	0	0	0
Milk processing unit	5	9	9
Piggery farms (group)	0	0	0

Forestry

	2015	2016	2017
Territorial Division HQs	1	1	1
Range Offices	2	2	2
Beat Offices	1	1	1
Community Forest (acreas)	385.22	3514.01	6209.6
Nursery (Nos.)	1	1	1
Forest Cover (%)	59.3	51.79	51.79
Protected Areas (Acres)	5819	5819	5819

7. EMPLOYMENT

Labour Force (Nos.)	2014	2015	2016
Male	7284	...	7,284
Female	3820	...	3,820
	3464	...	3,464