

Non-motorable bridges (Nos.)	20	20	20
Telephone connections (Nos.)	...	608	538
Internet lease line connections (Nos.)	...	55	60
Internet broadband connection (Nos.)	...	295	183
Cable TV operators	5	5	5
Taxis (Nos.)	95	103	132
Buses operating (Nos.)	18	13	10

9. TRADE & INDUSTRIES (Nos.)

	2015	2016	2017
Hotels and restaurants	434	362	121
Industries	15	19	29
Constructions	18	9	6

10. TOURISM (Nos.)

	2015	2016	2017
Tourists visited	3	...	0

11. ELECTRICITY

	2015	2016	2017
Households electrified (%)	99.0	99.0	99.0
Units consumed (MU)

12. RELIGION & CULTURE (Nos.)

	2015	2016	2017
Religious institutions	10	11	11
Religious monuments	36	37	37

13. PUBLIC FINANCE-Financial Year (Mill. Nu.)

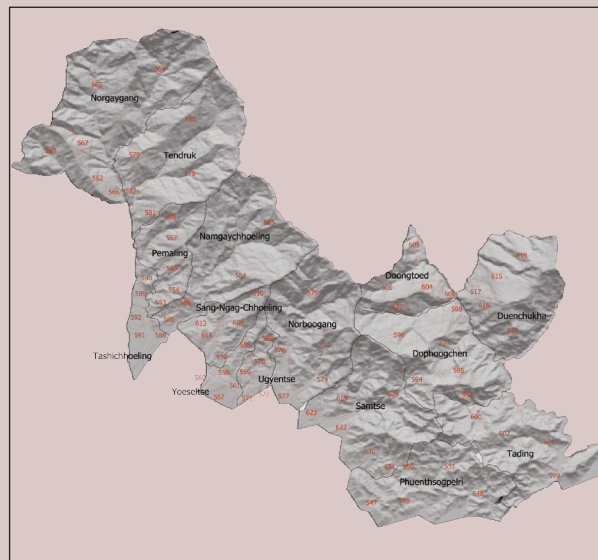
	2015-16	2016-17	2017-18
Budget outlay	906.990	947.091	927.427
Current	526.914	633.683	647.390
Capital	380.076	313.408	280.037
Expenditure	867.394	872.141	917.957
Current	516.019	627.246	641.413
Capital	351.375	244.896	276.544

Note:

¹Dzongkhag Population Projection 2006-2015

²2017 Population & Housing Census of Bhutan Forest cover-

Source:FRMD, DoFPS 2016



SAMTSE

Dzongkhag at a Glance

2018

National Statistics Bureau

Post Box No. 338, Thimphu : Bhutan

Tel: +975-2-333296/325402/322753 Fax: +975-2-323069 www.nsb.gov.bt

ISBN 978-99936-28-39-2

Data source: Dzongkhag Statistics Section

1. GENERAL

Geographical Characteristics

	2017 ²
Area (sq. km)	1,305
Altitude (masl.)	200 - 4,400

Administrative Tiers (Nos.)

	2017
Dungkhags	2
Gewogs	15
Chiwogs	77
Villages	316
Gungtong	65

2. POPULATION

	2014 ¹	2015 ¹	2017 ²
Total	69,612	70,618	62,590
Male	35,850	36,344	32,022
Female	33,762	34,274	30,568
Population density (per sq. km)	53	54	48

3. POVERTY RATE (TERMINAL)

	As per PAR 2017
Consumption poverty rate (%)	12.3
Multi-dimensional poverty rate (%)	0.035

4. HEALTH

Infrastructure (Nos.)

	2014	2016	2017
Hospitals	2	2	2
Indigenous Units	3	4	4
Basic Health Units (BHUs)			
BHU I	1	1	1
BHU II	13	13	13
Outreach clinics			
With sheds	43	46	46
Without sheds	5	4	6
Ambulance	5	5	5

Health Personnel (Nos.)

	2015	2016	2017
Doctors	9	9	10
Dungtshos (Indegenious Doctor)	3	2	2
Sowai Menpa (Indegenious Medical Technicians)	4	4	4
Nurses	47	46	55
Technicians	49	57	55

Health Indicators

	2015	2016	2017
Infant mortality rate (Per 1,000 live births)	22.3	0.0	0.0
Crude birth rate (Per 1,000 population)	14.3	14.1	13.8
Crude death rate (Per 1,000 population)	4.4	4.7	4.0

Maternal mortality rate (%)	0.1	1.2	0.0
Doctors per bed	0.1	8.9	0.1
Birth attended by trained personnel (%)	2.7	60.7	95.9
Under one immunization coverage (%)	99.5	99.3	100.0

Sanitation

	2015	2016	2017
Rural water supply coverage (%)	98.9	97.0	99.1
Rural population access to safe drinking water supplies (%)	96.3	99.0	89.9
Rural population access to improved sanitation (%)	98.5	97.3	97.9

5. EDUCATION

Number of educational institutes (Includes pvt. Nos)

	2015	2016	2017
Tertiary institutes under RUB	1	1	1
Central schools	1	2	2
Higher secondary schools	3	2	2
Middle secondary schools	2	2	2
Lower secondary schools	7	7	7
Primary schools	19	20	20
Extended class room	21	17	15
Non-formal education centres	66	48	34
ECCD	10	21	25
Other institutes(Zorigchusum)

Educational Indicators (Includes private schools)

	2015	2016	2017
School enrolment (Nos.)	15,735	15,404	14,952
Male	8,018	7,855	7,617
Female	7,717	7,549	7,335
Teachers (Nos.)	617	597	710
Male	391	376	445
Female	226	221	265
Pupil-teacher ratio	25.5	25.8	21.0
NFE instructors	71	48	34
Male	37	22	14
Female	34	26	23
NFE learners (Nos.)	967	584	584
Male	308	205	219
Female	659	379	313

6. AGRICULTURE

Land Registration by Type

	2015	2016	2017
Dry land (acres)	20,141.56	20,141.56	20,141.56
Wet land (acres)	14,040.52	14,040.53	14,040.53

Orchard (acres)	8,730.23	8,730.23	8,730.23
Irrigation channels (kms)	64.09	46.10	118.70
Functional	55.26	43.10	105.80
Non- functional	8.83	3.00	12.90
Power tillers (Nos.)	15	15	62
Agriculture seed production farms
Electric fencing (Nos.)	1	17	24
Electric fencing (kms.)	2	34	52
Farm sales shops (Nos.)	...	10	15

Renewal Natural Resources (RNR)

	2015	2016	2017
RNR centres (Nos.)	15	15	15

Livestock (Nos.)

	2015	2016	2017
Veterinary hospitals	1	1	1
Regional veterinary laboratories	1	1	1
Fishery farms	69	103	55
Poultry farms	94	160	177
Milk processing unit	1	1	2
Piggery farms	64	160	122

Forestry

	2015	2016	2017
Territorial division HQs	1	1	1
Range offices	4	4	4
Beat offices	5	5	5
Community forest (acreas)	2,560.31	4,552.2	11,702.0
Nursery (Nos.)	...	1	1
Forest cover (%)	77	77	60
Protected areas (areas)	Nil	Nil	Nil

7. EMPLOYMENT

	2014	2015	2017 ²
Labour force (Nos.)	38,868	38,599	45,706
Male	21,502	22,288	23,380
Female	17,366	16,311	22,326
Un-employed (Nos.)	709.0	296.0	396.0
Population involved in agriculture (%)	69.2	66.0	71.6
Un-employment rate	1.8	1.2	1.3
Labour force participation rate	73.2	52.7	65.6

8. TRANSPORT & COMMUNICATION

	2015	2016	2017
Length of road (Kms.)	99.0	171.0	109.9
Dzongkhag roads	8.3	8.3	8.3
Thromde roads	132.9	132.9	132.9
Gewog connectivity roads	172.3	172.0	425.5
Farm roads	14	14	15
Motorable bridges (Nos.)	14	14	15