

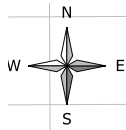


ANNUAL DZONGKHAG STATISTICS 2011

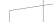



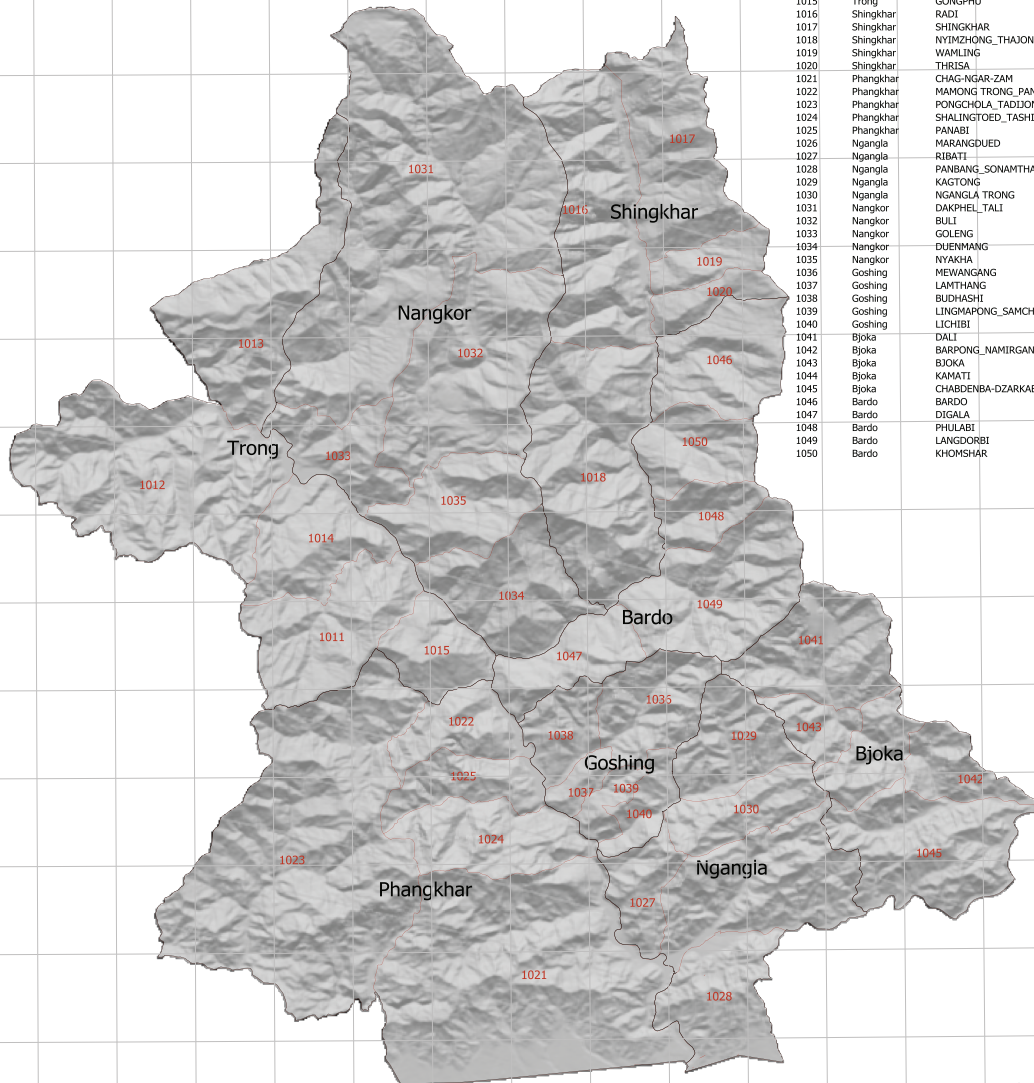
**Dzongkhag Administration
ZHAMGANG**





**Zhemgang Gewogs and Chiwogs as per the final delimitation order issued
by the
Election Commission of Bhutan**

 Gewog Boundries
 Chiwog Boundries



ID-1	GEWOG	CHIWOG
1011	Trong	SOEDRANG
1012	Trong	BERTI_TAGMA
1013	Trong	DANGKHAR_TRONG
1014	Trong	TSHANGLAJONG_ZURPHEL
1015	Trong	GONGPHU
1016	Shingkar	RADI
1017	Shingkar	SHINGKHAR
1018	Shingkar	NYIMZHONG_THAJONG
1019	Shingkar	WAMLING
1020	Shingkar	THIRISA
1021	Phangkar	CHAG-NGAR-ZAM
1022	Phangkar	MAMONG_TRONG_PANTANG
1023	Phangkar	PONGCHOLA_TADJONG
1024	Phangkar	SHALINGTOED_TASHIBI
1025	Phangkar	PANABI
1026	Ngangla	MARANGDUED
1027	Ngangla	RIBATI
1028	Ngangla	PANBANG_SONAMTHANG
1029	Ngangla	KAGTONG
1030	Ngangla	NGANGLA_TRONG
1031	Nangkor	DAKPHEL_TALI
1032	Nangkor	BULI
1033	Nangkor	GOLENG
1034	Nangkor	DUENMANG
1035	Nangkor	NYAKHA
1036	Goshing	MEWANGANG
1037	Goshing	LAMTHANG
1038	Goshing	BUDHASHI
1039	Goshing	LINGMAPONG_SAMCHHOELING
1040	Goshing	LICHIBI
1041	Bjoka	DALI
1042	Bjoka	BARPONG_NAMIRGANG
1043	Bjoka	BJOKA
1044	Bjoka	KAMATI
1045	Bjoka	CHABDENBA-DZARKABLA
1046	Bardo	BARDO
1047	Bardo	DIGALA
1048	Bardo	PHULABI
1049	Bardo	LANGDORBI
1050	Bardo	KHOMSHAR



© 2011
National Statistics Bureau

All rights reserved

Published by
National Statistics Bureau

Contact
National Statistics Bureau
PO Box No. 338
Telephone: +975-2-322753/333296
Fax: +975-2-323069
Website: www.nsb.gov.bt

Statistical Unit
Zhemgang Dzongkhag
Telephone: +975:03:741253
Fax: +975:03:741142
Email: sonamzin@druknet.bt

Second Issue
Catalogue No. 104

Contents

	page
Preface	i
Background of Dzongkhag	ii
Abbreviations	iii
Section 1. Population (Tables 1-2)	1-2
Population by Age-Group and Sex	1
Population Density and Sex Ratio	2
Section 2. Births, Deaths, Marriages, and Divorces (Tables 3-10)	3-6
Total number Live Births, Deaths, Marriages, and Divorces	3
Adolescent Birth Rate and Total Fertility Rate	3
Early Childbearing	4
Use of Contraception	4
Antenatal Care Provider	5
Number of Antenatal Care Visits	5
Assistance During Delivery	6
Place of Delivery	6
Section 3. Health and Nutrition (Tables 11-26)	7-16
Health Infrastructures, Facilities and Personnel	7
Hospital Admission and Average Length of Stay	8
Number of Surgeries	8
Number of Dental Services	8
Number of Top Ten Morbidity	9
Child Disability	9
Nutritional Status of Children	10
Initial Breastfeeding	10
Duration of Breastfeeding	11
Low Birth Weight Infants	11
Neonatal Tetanus Protection	11
Solid Fuel Use	12
Use of Improved Water Sources	13
Household Water Treatment	14
Time to Source of Drinking Water	14
Types of Sanitation Facilities	15

Section 4. Education (Tables 27-34)	16-23
Number of Schools, Institutions, Teachers and Students	16
School Enrolment by Grade and Sex	19
Student by Age-Group, Sex and by Level	21
Literacy Among Young Women	22
School Readiness	22
Primary School Entry	23
Children Reaching Last Grade of Primary School	23
Education Gender Parity	23
Section 5. Law Enforcement, Courts, and Prisons (Tables 35-38)	24-26
Summary of Crime Reports by Nature of Crime	24
Monthly Motor Vehicle Accidents	25
Causes of Motor Vehicle Accidents	25
Attitudes Toward Domestic Violence	26
Section 6. Geography and Environment (Tables 39-43)	26-28
Land Area and Damages Caused by Types	26
Average Monthly Temperature	27
Average Monthly Rainfall	27
Percentage of Forest Coverage, Number of Protected Spring and Lakes	28
Disposal of Childs Faeces	28
Section 7. Elections and Local Government (Tables 44-45)	29-30
Parliamentarians and Local Government Representatives	29
Parliamentarians and Local Government election expenditures	30
Section 8. Royal Government Finances and Employment (Tables 46-50)	31-33
Government Finance Expenditures	31
Dzongkhag 9th & 10th Five Year Plan Outlays	32
Dzongkhag 9th and 10th Five Year Plan Expenditure	32
Gewog 9th and 10th Five Year Plan Outlays	33
Gewog 9th and 10th Five Year Plan by Expenditures	33
Section 9. Labor Force, Employment, and Earnings (Tables 51-54)	34-38
Employed Persons by Age, Sex and Area of Residence	34
Employment by Industries, Age-Group and Sex	35
Child Labour	36
Child Labour and School Attendance	37

Section 10. Prices (Tables 55-55)	38-40
Agricultural Production & Average prices by commodities	38
Section 11. Agriculture (Tables 56-58)	41-43
Renewable Natural Resources	41
Agricultural Production by Types	41
Livestock Population by Types	42
Livestock Productions	43
Section 12. Forestry, Fishing and Mining (Tables 59-59)	44-44
Forestry Productions	44
Section 13. Energy and Utilities (Tables 60-60)	45-45
Electricity Generating Stations And Their Capacities	45
Section 14. Construction and Housing (Tables 61-62)	45-45
Number of Households by Area	45
Number of Building Permits issued by Towns	45
Section 15. Manufactures (Tables 63-63)	46-46
Number of Establishment by Type and Size	46
Section 16. Wholesale and Retail Trade (Tables 64-64)	46-46
Number of Wholesale, Retail Trade and Industrial licenses issued	46
Section 17. Transportation (Tables 65-66)	47-47
Number of Public Transport and Facilities	47
Roads and Bridges	47
Section 18. Information and Communications (Tables 67-67)	48-48
Telecommunications	48
Section 19. Banking, Finance, and Insurance (Tables 68-69)	48-48
Number of Establishment in Banking and Finance	48
Number of account holders in Banks	48
Section 20. Arts, Recreation, Accommodation and Monuments (Tables 70-71)	49-49
Number of Administrative Units	49
Recreation, Tourist Visitors and Accommodation	49



Preface

The Annual Dzongkhag Statistics of Zhemgang is the second in the series of publications. It intends to provide comprehensive statistics of Zhemgang Dzongkhag.

The report contains detailed statistical tables and maps to portray conditions in the dzongkhag from a variety of perspectives, including demographics, socio-economic status, environment, culture, local governance and infrastructural developments. Statistical data for this publication is collected and compiled from various sectors and through primary data sources.

We hope this report will serve as a guiding tool for micro level planning and decision making. In order for us to improve the coverage and quality of data in our future publications we welcome your comments and suggestions.

National Statistics Bureau
Thimphu

Background

Zhemgang Dzongkhag has a total land area of 2421.74 km² with one Drungkhag viz. Panbang and eight Gewogs namely; Bardo, Bjoka, Goshing, Nangkor, Ngangla, Phangkhar, Shingkhar and Trong. For administrative convenience, the Drungkhag administration at Panbang looks after the four southern Gewogs viz; Bjoka, Goshing, Ngangla and Phangkhar.

Zhemgang is considered as one of the least developed Dzongkhags in the country. Most of its Gewogs are still not connected with the road network. Dzongkhag is divided into three ecological zones namely Upper Kheng, Middle Kheng and Lower Kheng. The livelihood for the people of the Kheng depends on agriculture and livestock farming. In recent years, mandarin cultivation in Lower Kheng as a source of cash income has been quite encouraging. However, the transportation has been the biggest hurdle for any business or developmental activities to be undertaken.

The forest covers 86 percent of the total area of the Dzongkhag. Zhemgang is also known for Royal Manas Park, which has been declared as one the ten internationally recognized “Hot Spot” areas. The Dzongkhag shares the boundaries with Royal Manas Park and other protected areas under Jigme Singye Wangchuck and Thrimshingla National Parks.

The existence problems such as levels of illiteracy, infant and maternal mortality, shortage of skilled and unskilled manpower, limited arable land, limited accessibility to market and out-migration of youth and educated population exacerbated the situation.

Abbreviations

%:	Percent	Inst:	Institute
< :	Less than	Kg:	Kilogram
> :	Greater than	LFS:	Labor Force Survey
AIDS:	Acquired Immune Deficiency Syndrome	LSS:	Lower Secondary School
Avg:	Average	Max:	Maximum
BHU:	Basic Health Unit	Min:	Minimum
BLSS:	Bhutan Living Standard Survey	MSS:	Middle Secondary School
Cft:	Cubic Feet	n.a:	Not Available
CPS:	Community Primary school	N.A:	Not Applicable
DPTH:	Diphtheria Parthuisis Tetanus Hepatitis B	NFE:	Non Formal Education
DYT:	Dzongkhag Yargye Tsogdue	Nu:	Ngultrum
FYP:	Five Year Plan	ORC:	Outreach Clinic
GDP:	Gross Domestic Product	PAR:	Poverty Analysis Report
GIS:	(Infrastructure mapping): Geographical Infrastructure System	PHCB:	Population and Housing Census of Bhutan
Gm:	Gram	PP:	Pre Primary
GYT:	Gewog Yargye Tshogchung	PS:	Primary School
HIV:	Human Immune Virus	Pvt:	Private
Hr:	Hour	Qty:	Quantity
HSS:	Higher Secondary School	Sq.Km:	Square Kilometer
		SYB:	Statistical Year Book
		TV:	Television



**Table 1. Population by Age-Group and Sex, Zhemgang Dzongkhag,
(2005 ~ 2011)**

Age-group	2005	2006	2007	2008	2009	2010	2011
Total	18,636	18,924	19,213	19,503	19,798	20,090	20,380
0-4	1,813	2,003	2,130	2,253	2,375	2,493	2,476
5-9	2,164	1,969	1,917	1,872	1,835	1,805	1,930
10-14	2,615	2,119	2,086	2,047	2,006	1,967	1,912
15-19	2,543	2,083	2,090	2,094	2,092	2,080	2,060
20-24	1,645	1,955	1,971	1,985	1,997	2,009	2,020
25-29	1,244	1,752	1,786	1,817	1,845	1,870	1,892
30-34	1,007	1,457	1,506	1,557	1,606	1,652	1,693
35-39	964	1,217	1,249	1,281	1,318	1,358	1,405
40-44	747	988	1,023	1,060	1,098	1,134	1,168
45-49	815	815	835	857	883	911	943
50-54	788	672	689	707	727	748	768
55-59	555	551	563	576	591	605	622
60-64	516	445	453	463	473	484	495
65+	1,220	898	915	934	952	974	996
Male	9,492	9,618	9,747	9,878	10,013	10,143	10,282
0-4	863	974	1,036	1,096	1,156	1,214	1,206
5-9	1099	963	935	912	893	877	939
10-14	1349	1,044	1,026	1,005	983	962	934
15-19	1318	1,041	1,040	1,038	1,034	1,025	1,013
20-24	881	1,008	1,009	1,009	1,008	1,007	1,008
25-29	643	919	935	948	960	968	974
30-34	512	773	797	822	845	867	887
35-39	500	648	665	682	701	721	745
40-44	361	519	539	560	582	602	621
45-49	393	424	434	446	460	476	494
50-54	391	348	357	366	376	387	398
55-59	298	284	290	296	304	311	320
60-64	276	227	231	236	241	246	252
65+	608	446	453	462	470	480	491

Female	9,144	9,306	9,466	9,625	9,785	9,947	10,098
0-4	950	1,029	1,094	1,157	1,219	1,279	1,270
5-9	1065	1,006	982	960	942	928	991
10-14	1266	1,075	1,060	1,042	1,023	1,005	978
15-19	1225	1,042	1,050	1,056	1,058	1,055	1,047
20-24	764	947	962	976	989	1,002	1,012
25-29	601	833	851	869	885	902	918
30-34	495	684	709	735	761	785	806
35-39	464	569	584	599	617	637	660
40-44	386	469	484	500	516	532	547
45-49	422	391	401	411	423	435	449
50-54	397	324	332	341	351	361	370
55-59	257	267	273	280	287	294	302
60-64	240	218	222	227	232	238	243
65+	612	452	462	472	482	494	505

Note: Figures for the year 2006 onwards are based on the projected population

Source: Population & Housing Census of Bhutan, 2005

Table 2. Population, Density and Sex Ratio, Zhemgang Dzongkhag, (2005 ~ 2011)

Details	2005	2006	2007	2008	2009	2010	2011
Population (Number)	18,636	18,924	19,213	19,503	19,798	20,090	20,380
Population density (Persons per Sq. Km)	8.8	8.9	9.0	9.2	9.3	9.4	9.6
Population sex ratio	1.04	1.03	1.03	1.03	1.02	1.02	1.02

Source : Dzongkhag Population Projection 2006-2015

Table 3. Total Number of Live Births, Deaths, Marriages and Divorces, Zhemgang Dzongkhag, (2008 ~ 2011)

Age-group	2008	2009	2010	2011
Live births	368	371	329	n.a
Male	n.a	n.a	n.a	n.a
Female	n.a	n.a	n.a	n.a
Total deaths	71	99	114	n.a
Male	n.a	n.a	n.a	n.a
Female	n.a	n.a	n.a	n.a
Infant deaths	4	4	7	n.a
Male	n.a	n.a	n.a	n.a
Female	n.a	n.a	n.a	n.a
Marriages	n.a	n.a	n.a	n.a
Male	n.a	n.a	n.a	n.a
Female	n.a	n.a	n.a	n.a
Divorces	n.a	n.a	n.a	n.a
Male	n.a	n.a	n.a	n.a
Female	n.a	n.a	n.a	n.a

Source: Dzongkhag Health Sector & Court, Zhemgang Dzongkhag Dzongkhag

Table 4. Adolescent Birth rate and Total fertility rate, Zhemgang Dzongkhag , (2010)

Details	2010
Adolescent birth rate (age specific fertility rate for women age 15-19)	150
Total fertility rate	4.1

Source : BMIS, 2010

Table 5. Early Childbearing, Zhemgang Dzongkhag, (2010)

Percentage of women age 15-19 who have had livebirth or who are pregnant with the first child; percentage of women age 15-19 who have begun childbearing before age 15, and the percentage of women age 20~24 who have had a live birth before age 18.

Details	2010
% of women age 15~19	
Have had a live birth	25.2
Are pregnant with first child	7.6
Have begun childbearing	32.8
Have had a live birth before 15	2.7
Number of women age 15~19	42
% of women age 20~24 who have had a live birth before age 18	20.8
Number of women age 20~24	63

Source : BMIS, 2010

Table 6. Use of Contraception, Zhemgang Dzongkhag, (2010)

Percentage of Women age 15~49 Years Currently Married or in Union Who are using (or whose partner is using) a Contraceptive Method.

Details	2010
Not using any method	
Percent of women (currently married or in union) who are using	39.3
Female sterilization	1.9
Male sterilization	7.3
IUD	2.4
Injectables	41.2
Implants	-
Oral contraceptive Pill	5.4
Male condom	2.2
Female condom	.0
Foam/ jelly	.0
Lactational amenorrhoea method (LAM)	.0
Periodic abstinence/ rhythm	.0
Withdrawal	.0
Other	0.2
Any modern method	60.4
Any traditional method	0.2
Any method	60.7
Number of women currently married or in union	262

Source : BMIS, 2010

Table 7. Antenatal Care Provider, Zhemgang Dzongkhag, (2010)

Percent Distribution of Women Aged 15~49 Who Gave Birth in The Survey by Type of Personnel Providing Antenatal Care.

Details	2010
Persons providing antenatal care	
Doctor	13.5
Nurse/ midwife	49.1
HA/ BHW	29.2
Assistant clinical officer (ACO)	.0
Traditional birth attendant	0.6
Village health worker	.0
Other/ missing	.0
No antenatal care received	7.6
Total	100
At Least once by skilled personnel	91.9
Number of women who gave birth in the preceding 2 years	82

Source : BMIS, 2010

Table 8. Number of Antenatal Care Visits, Zhemgang Dzongkhag, (2010)

Percentage of Women Who had a Live Births During the Two Years Preceding the Survey by Number of Antenatal Care Visits by Any Provider.

Details	2010
Percent of women who had	
No antenatal care visits	7.6
1 Visits	4.5
2 Visits	9.4
3 Visits	20.4
4 or more visits	58.2
Missing/ DK	.0
Total	100
Number of women who gave birth in the preceding 2 years	82

Source : BMIS, 2010

Table 9. Assistance During Delivery, Zhemgang Dzongkhag, (2010)

Percent Distribution of Women age 15-49 Who had a Live Birth in the Two Years Preceding the Survey by Person Assisting, at Delivery and Percentage of Births Delivered by C-section.

Details	2010
Person assisting at delivery	
Doctor	16.7
Nurse / Midwife	15.4
HA/BHW	4.7
Asst. clinical officer (ACO)	0.9
Traditional birth attendant	0.0
Village health worker	.0
Relative / friend	48.6
Other/missing	12.6
No attendant	1.14
Total	100
Any skilled personnel	37.7
Percent delivered by C-section	3.7
Number of women who gave birth in preceding two years	82

Source : BMIS, 2010

Table 10. Place of Delivery, Zhemgang Dzongkhag, (2010)

Percent Distribution of Women age 15-49 With a Birth in Two Years Preceding the Survey by Place of Delivery.

Details	2010
Place of delivery	
Public sector health facility	36.9
Private sector health facility	.0
Home	62.7
Other	0.5
Total	100
Delivered in health facility [1]	36.9
Number of women who gave birth in preceding two years	82

Source : BMIS, 2010

Table 11. Health Infrastructures, Facilities and Personnel, Zhemgang Dzongkhag, (2007 ~ 2010)

Details	2007	2008	2009	2010
Number of hospitals	1	1	1	1
Number of BHUs	14	14	14	14
BHU grade I	2	2	2	2
BHU grade II	12	12	12	12
Number of ORCs	28	28	28	28
Number of indigenous units	1	1	3	3
Number of doctors	2	2	2	3
Number of hospital/BHU beds	54	54	54	54
Persons per doctor	9,607	9,752	9,899	6,697
Persons per hospital bed	356	361	367	372
Total morbidity attendance	48,711	49,135	51,759	60,891
Health assistants	15	19	20	26
Basic health workers	6	6	5	5
Sister and nurses	9	9	13	11
Technicians	9	11	15	14
Indigenous dungtsho	1	1	1	1
Indigenous compounders/Menpas	1	1	13	4
Malaria workers	1	1	1	-
Village health workers	45	51	51	51
Number of children immunized				
Polio	415	388	379	381
DPTH	416	385	375	384
Measles	377	447	381	386
BCG	366	325	286	262
Others	n.a	n.a	n.a	n.a

Source: Dzongkhag Health Sector, Zhemgang Dzongkhag

Table 12. Hospital Admission and Average Length of Stay, Zhemgang Dzongkhag, (2007 ~ 2010)

Average admission	2007	2008	2009	2010
Hospital admission				
Total	1017	1190	1350	1269
Patient days	4803	4885	5273	4443
Average days	4.7	4.1	3.9	3.5
BHU admission	99	116	108	152

Source : Annual Health Bulletin, MoH

Table 13. Number of Surgeries, Zhemgang Dzongkhag, (2007 ~ 2010)

Details	2007	2008	2009	2010
Surgeries				
Caesarian Section	1	0	0	0
General Abdominal	0	0	4	0
General Others	56	25	48	10
Orthopaedic extremities	5	1	11	6
Orthopaedic Others	14	12	7	0
Gynaecology	8	7	2	0
ENT	11	0	0	2
Eye	11	20	0	0

Source : Annual Health Bulletin, MoH

Table 14. Number of Dental Services, Zhemgang Dzongkhag, (2007 ~ 2010)

Dental Services	2007	2008	2009	2010
Prophylaxis	16	28	12	41
Scaling	9	9	2	9
Fillings	149	173	66	248
Extractions	181	242	83	317
Others	269	240	83	500

Source : Annual Health Bulletin, MoH

Table 15: Number of Top Ten Morbidity, Zhemgang Dzongkhag, (2007~ 2010)

Priority health problem/ Disease	2007	2008	2009	2010
Diarrhoea	2,713	2,577	2,695	2,099
Conjunctivitis	2,836	1,977	1,549	3,506
Dysentery	980	534	718	353
Typhoid	25	104	169	-
Sexually transmitted disease, excluding HIV/AIDS	94	57	99	8
Diabetes	12	15	14	24
Tuberculosis	14	8	9	21
Early syphilis	n.a	6	5	n.a
Cholera	n.a	n.a	n.a	n.a
Tetanus	n.a	n.a	n.a	n.a
Diphtheria	n.a	n.a	n.a	n.a
Pertussis	n.a	n.a	n.a	n.a

Source : Dzongkhag Health Sector, Zhemgang Dzongkhag

Table 16. Child Disability, Zhemgang Dzongkhag, (2010)

Child Disability	2010
Percentage of children aged 2-9 years with reported disability by type of disability	
Delay in sitting standing or walking	1.9
Difficulty seeing, either in the daytime or at night	11.3
Appears to have difficulty hearing	10.3
No understanding of instructions	2.7
Difficulty in walking moving, moving arms, weakness or stiffness	2
Have fits, become rigid, lose conciousness	2.4
Not learning to do things like other children his/her age	3.4
No speaking cannot be understood in words	4.2
Appears mentally backward, dull, or slow	1.4
Speech is not normal	6.2
Number of children aged 3-9 years	253
Cannot name at least one object	18.9
Number of children aged 2 years	45
Percentage of children 2-9 years of age with at least one reported disability*	25.1
Number of children aged 2-9 years	298

Source: BMIS, 2010

Table 17. Nutritional Status of Children, Zhemgang Dzongkhag, (2010)

Percentage of children under age 5 by nutritional status according to three anthropometric indices: weight for age, height for age, and weight for height.

Nutritional Status		2010
Weight for age:	% below -2 sd [1]	15.9
Weight for age:	% below -3 sd [2]	6.1
Weight for age:	Mean Z-Score (SD)	-0.8
Weight for age:	Number of children	165
Height for age:	% below -2 sd [3]	42.8
Height for age:	% below -3 sd [4]	18.6
Height for age:	Mean Z-Score (SD)	-1.7
Height for age:	Number of children	158
Weight for height:	% below -2 sd [5]	8.8
Weight for height:	% below -3 sd [6]	3.3
Weight for height:	% above +2 sd	11.4
Weight for height:	Mean Z-Score (SD)	0.2
Weight for height:	Number of children	156

Source: BMIS, 2010

Table 18. Initial Breastfeeding, Zhemgang Dzongkhag, (2010)

Percentage of Last-Born Children in the 2 Years Preceding the Survey Who Were Ever Breastfed, Percentage Who Were Breastfed Within One Hour of Birth and Within One Day of Birth, and Percentage Who Received a Prelacteal Feed.

Initial Breastfeeding	2010
Percentage ever breastfed	99.5
Percentage who were first breastfed: Within one hour of birth	81.0
Percentage who were first breastfed: Within one day of birth	95.1
Percentage who received a prelacteal feed	1.9
Number of last-born children in the two years preceding the survey	82

Source: BMIS, 2010

Table 19. Duration of Breastfeeding, Zhemgang Dzongkhag, (2010)

Median duration of any breastfeeding, exclusive breastfeeding, and predominant breastfeeding among children age 0-35 months.

Duration of Breastfeeding	2010
Median duration (in months) of	
Any breastfeeding	26.7
Exclusive breastfeeding	1.5
Predominant breastfeeding	4.4
Number of children age 0-35 months	119

Source: BMIS, 2010

Table 20. Low Birth Weight Infants, Zhemgang Dzongkhag, (2010)

Percentage of Last-Born Children in the 2 Years Preceding the Survey That are Estimated to Have Weighed Below 2500 Grams at Birth and Percentage of Live Births Weighed at Birth.

Low Birth Weight Infants	2010
Percent of live births	
Below 2500 grams	8.1
Weighed at birth	44.6
Number of live births in the last 2 years	82

Source: BMIS, 2010

Table 21. Neonatal Tetanus Protection, Zhemgang Dzongkhag, (2010)

Percentage of women age 15-49 years with a live birth in the last 2 years protected against neonatal tetanus.

Neonatal Tetanus Protection	2010
Percentage of Women Who Received at Least	
2 Doses During Last Pregnancy	39.7
Percentage of women who did not receive two or more doses during last pregnancy but received	
2 doses, the last within prior 3 years	37.6
3 doses, the last within prior 5 years	0.5
4 doses, the last within prior 10 years	1.5
5 or more doses during lifetime	.0
Protected against tetanus [1]	79.2
Number of women with a live birth in the last 2 years	82

Source: BMIS, 2010

Table 22. Solid Fuel Use, Zhemgang Dzongkhag, (2010)

Percentage Distribution of Household Members According to Type of Cooking Fuel Used by the Household, and Percentage of Household Members Living in Households Using Solid Fuels for Cooking.

Solid Fuel Use	2010
Percentage of household members in households using	
Electricity	29.1
Liquefied Petroleum Gas (LPG)	7.0
Kerosene	0.1
Coal	0.5
Wood	63.3
Straw/Shrubs/Grass	0.0
No food cooked in household	0.0
Other	0.0
Total	100
Solid fuels for cooking	63.7
Number of household members	1800

Source: BMIS, 2010

Table 23. Use of Improved Water Sources, Zhemgang Dzongkhag, (2010)

Percent distribution of household population according to main source of drinking water and percentage of household population using improved drinking water sources.

Water Sources	2010
Main source of drinking water	
Improved sources	
Piped into dwelling	10.1
Piped into compound	41.1
Piped to neighbor	21.0
Public outdoor tap	18.6
Protected well	0.1
Spring	0.2
Rainwater collection	0.0
Bottled water	0.0
Unimproved sources	
Unprotected well	0.0
Unprotected spring	1.2
Tanker-truck	0.0
Cart with samll tank/drum	0.0
Surface water (river,stream, dam, lake,pond,canal,irrigation channel)	7.8
Other	0.0
Total	100.0
Percentage using improved sources of drinking water	91.0
Number of household members	1800

Source: BMIS, 2010

Table 24. Household Water Treatment, Zhemgang Dzongkhag, (2010)

Percentage of Household Population by Drinking Water Treatment Method Used in the Household, and for Household Members Living in Households Where an Unimproved Drinking Water Source is Used, the Percentage Who are Using an Appropriate Treatment Method

Water Treatment	2010
Water treatment method used in the household	
None	55.5
Boil	42.6
Add bleach / chlorine	0.0
Strain through a cloth	0.8
Use water filter	11.6
Solar disinfection	0.0
Let it stand and settle	2.0
Other	0.0
Don't know	0.0
Number of household members	1800.0
Percentage of household members in households using unimproved drinking water sources and using an appropriate water treatment method [1]	7.6
Number of household members in households using unimproved drinking water sources	163

Source: BMIS, 2010

Table 25. Time to Source of Drinking Water, Zhemgang Dzongkhag, (2010)

Percent Distribution of Household Population According to Time to go to Source of Drinking Water, Get Water and Return, for Users of Improved and Unimproved Drinking Water Sources

Time to Source of Drinking Water	2010
Time to source of drinking water	
Users of improved drinking water sources	
Water on premises	88.8
Less than 30 minutes	1.2
30 minutes or more	0.8
Missing/DK	0.1
Users of unimproved drinking water sources	
Water on premises	3.0
Less than 30 minutes	3.4
30 minutes or more	2.6
Missing/DK	0.0
Total	100.0
Number of household members	1800

Source: BMIS, 2010

Table 26. Types of Sanitation Facilities,Zhemgang Dzongkhag, (2010)

Percent Distribution of Household Population According to Type of Toilet Facility Used by the Household

Time to Source of Drinking Water	2010
Type of toilet facility used by household	
Improved sanitation facility	
Flush toilet	0.1
Flush to septic tank(Without soak pit)	27.2
Flush to pit (latrine)	4.1
Flush to unknown place/not sure/DK where	0.0
Flush to septic tank (with soak pit)	1.1
Ventilated Improved Pit latrine (VIP)	0.1
Pit latrine with slab	10.4
Composing toilet	0.4
Unimproved sanitation facility	
Flush to somewhere else	0.2
Pit latrine without slab /open pit	47.0
Long drop latrine	3.7
Bucket	0.0
Other	0.0
Missing	0.0
Open defecation (no facility, bush, field)	
No facility,bush, field	5.8
Total	100.0
Number of household members	1800

Source: BMIS, 2010

Table 27. Number of Schools, Institutions, Teachers and Students, Zhemgang Dzongkhag, (2008 ~ 2011)

Details	CPS	PS	LSS	MSS	HSS	College	Pvt.	Other	NFE	Daycare	Total
							Inst.	Centres	Centres	Centres	
2008											
Number of schools and institutions	9	15	4	1	1	0	1	0	n.a	0	31
Teaching staff	21	74	72	21	26	-	7	-	-	-	221
Bhutanese	21	74	64	20	17	N.A	2	N.A	n.a	N.A	198
Male	19	63	43	17	14	N.A	2	N.A	n.a	N.A	158
Female	2	11	21	3	3	N.A	-	N.A	n.a	N.A	40
Non-Bhutanese	-	-	8	1	9	N.A	5	N.A	n.a	N.A	23
Male	-	-	5	1	6	N.A	5	N.A	n.a	N.A	17
Female	-	-	3	-	3	N.A	-	N.A	n.a	N.A	6
Temporary teachers	n.a	n.a	n.a	n.a	n.a	N.A	n.a	N.A	n.a	N.A	-
Male	n.a	n.a	n.a	n.a	n.a	N.A	n.a	N.A	n.a	N.A	-
Female	n.a	n.a	n.a	n.a	n.a	N.A	n.a	N.A	n.a	N.A	-
Number of students	408	1,938	1,824	447	754	N.A	36	N.A	n.a	N.A	5,407
Male	190	1,009	958	246	415	N.A	17	N.A	n.a	N.A	2,835
Female	218	929	866	201	339	N.A	19	N.A	n.a	N.A	2,572
Student to teacher ratio	19	26	25	21	29	N.A	5	N.A	n.a	N.A	
2009											
Number of schools and institutions	7	18	3	2	1	0	1	0	20	0	52
Teaching staff	17	82	53	48	28	N.A	9	N.A	20	N.A	257
Bhutanese	17	81	48	37	20	N.A	2	N.A	20	N.A	225
Male	14	70	30	31	14	N.A	2	N.A	n.a	N.A	161
Female	3	11	18	6	6	N.A	-	N.A	n.a	N.A	44

Non-Bhutanese	-	1	5	11	8	N.A	7	N.A	-	N.A	32
Male	-	1	2	4	5	N.A	7	N.A		N.A	19
Female	-	-	3	7	3	N.A	-	N.A		N.A	13
Temporary teachers	n.a	n.a	n.a	n.a	n.a	N.A	n.a	N.A		N.A	0
Male	n.a	n.a	n.a	n.a	n.a	N.A	n.a	N.A		N.A	0
Female	n.a	n.a	n.a	n.a	n.a	N.A	n.a	N.A		N.A	0
Number of students	354	2,299	1,217	800	719	N.A	119	N.A	342	N.A	5,850
Male	163	1,153	621	454	392	N.A	67	N.A	97	N.A	2,947
Female	191	1,146	596	346	327	N.A	52	N.A	245	N.A	2,903
Student to teacher ratio	21	28	23	17	26	N.A	13	N.A	17	N.A	
2010											
Number of schools and institutions	7	17	3	3	1	0	1	0	n.a	0	32
Teaching staff	19	81	52	56	27	N.A	9	N.A	0	N.A	244
Bhutanese	19	80	47	49	18	N.A	2	N.A	-	N.A	215
Male	17	65	29	37	14	N.A	2	N.A		N.A	164
Female	2	15	18	12	4	N.A	-	N.A		N.A	51
Non-Bhutanese	-	1	5	7	9	N.A	7	N.A	-	N.A	29
Male	-	1	2	4	6	N.A	7	N.A		N.A	20
Female	-	-	3	3	3	N.A	-	N.A		N.A	9
Temporary teachers	-	-	-	-	-	N.A	-	N.A	-	N.A	0
Male	n.a	n.a	n.a	n.a	n.a	N.A	n.a	N.A		N.A	0
Female	n.a	n.a	n.a	n.a	n.a	N.A	n.a	N.A		N.A	0
Number of students	329	2,071	1,157	1,183	668	N.A	128	N.A	-	N.A	5,536
Male	150	1,000	592	619	360	N.A	70	N.A		N.A	2,791
Female	179	1,071	565	564	308	N.A	58	N.A		N.A	2,745
Student to teacher ratio	17	26	22	21	25	N.A	14	N.A		N.A	

Table 28. School Enrolment by Grade and Sex, Zhemgang Dzongkhag, (2008~2011)

Class	2008	2009	2010	2011
Primary level				
Total	3,685	3,578	3,462	3,374
Class PP	525.0	470.0	410.0	463.0
Class I	561.0	524.0	457.0	398.0
Class II	601.0	529.0	516.0	453.0
Class III	536.0	588.0	547.0	489.0
Class IV	525.0	519.0	564.0	596.0
Class V	472.0	509.0	487.0	512.0
Class VI	465.0	439.0	481.0	463.0
Male				
Total	1,882	1,790	1,659	1,649
Class PP	256	241	187	240
Class I	285	252	222	180
Class II	313	262	238	226
Class III	275	301	270	232
Class IV	256	257	276	300
Class V	245	250	240	251
Class VI	252	227	226	220
Female				
Total	1,803	1,788	1,803	1,725
Class PP	269	229	223	223
Class I	276	272	235	218
Class II	288	267	278	227
Class III	261	287	277	257
Class IV	269	262	288	296
Class V	227	259	247	261
Class VI	213	212	255	243
Secondary level				
Total	1,712	1,930	2,067	2,086
Class VII	410	473	435	447
Class VIII	391	430	450	425
Class IX	325	369	447	439
Class X	303	308	352	413
Class XI	144	187	194	151
Class XII	139	163	189	211

Male	953	1,060	1,050	1,122
Class VII	213	253	216	215
Class VIII	217	219	241	223
Class IX	173	196	242	238
Class X	155	164	199	215
Class XI	105	116	66	97
Class XII	90	112	86	134
Female	759	870	1,017	964
Class VII	197	220	219	232
Class VIII	174	211	209	202
Class IX	152	173	205	201
Class X	148	144	153	198
Class XI	39	71	128	54
Class XII	49	51	103	77

Source: Dzongkhag Education Sector, Zhemgang Dzongkhag

Table 29. Student by Age-Group, Sex and by Level, Zhemgang Dzongkhag, (2008~2011)

Details	2008	2009	2010	2011
Students in primary school level (Class PP-VI)				
Total	n.a	n.a	n.a	3,407
Age < 6 years	n.a	n.a	n.a	39
Age 6-12 years	n.a	n.a	n.a	2,664
Age 13 & above	n.a	n.a	n.a	704
Male				
Age < 6 years	n.a	n.a	n.a	22
Age 6-12 years	n.a	n.a	n.a	1,307
Age 13 & above	n.a	n.a	n.a	337
Female				
Age < 6 years	n.a	n.a	n.a	17
Age 6-12 years	n.a	n.a	n.a	1,357
Age 13 & above	n.a	n.a	n.a	367
Student in LSS level (Class VII-VIII)				
Total	n.a	n.a	n.a	929
Age < 13 years	n.a	n.a	n.a	22
Age 13-14 years	n.a	n.a	n.a	302
Age 15 & above	n.a	n.a	n.a	605
Male				
Age < 13 years	n.a	n.a	n.a	7
Age 13-14 years	n.a	n.a	n.a	162
Age 15 & above	n.a	n.a	n.a	293
Female				
Age < 13 years	n.a	n.a	n.a	15
Age 13-14 years	n.a	n.a	n.a	140
Age 15 & above	n.a	n.a	n.a	312
Students in MSS level (Class IX-X)				
Total	n.a	n.a	n.a	860
Age < 15 years	n.a	n.a	n.a	11
Age 15-16 years	n.a	n.a	n.a	218
Age 17 & above	n.a	n.a	n.a	631
Male				
Age < 15 years	n.a	n.a	n.a	7
Age 15-16 years	n.a	n.a	n.a	107
Age 17 & above	n.a	n.a	n.a	347

Female				
Age < 15 years	n.a	n.a	n.a	4
Age 15-16 years	n.a	n.a	n.a	111
Age 17 & above	n.a	n.a	n.a	284
Students in HSS level (Class XI-XII)				
Total	n.a	n.a	n.a	360
Age < 17 years	n.a	n.a	n.a	12
Age 17-18 years	n.a	n.a	n.a	94
Age 19 & above	n.a	n.a	n.a	254
Male				
Age < 17 years	n.a	n.a	n.a	5
Age 17-18 years	n.a	n.a	n.a	56
Age 19 & above	n.a	n.a	n.a	168
Female				
Age < 17 years	n.a	n.a	n.a	7
Age 17-18 years	n.a	n.a	n.a	38
Age 19 & above	n.a	n.a	n.a	86

Source : Education Sector, EMIS, Zhemgang Dzongkhag

Table 30. Literacy Among Young Women, Zhemgang Dzongkhag , (2010)

Literacy Among Young Women	2010
Percentage literate	40.1
Percentage not known	0.0
Number of women age 15-24 years	105

Source: BMIS, 2010

Table 31. School Readiness,Zhemgang Dzongkhag, (2010)

Percentage of children attending first grade of primary school who attended pre-school the previous year.

School Readiness	2010
Percentage of children attending first grade who attended preschool in previous year	16.8
Number of children attending first grade of primary school	20

Source: BMIS, 2010

Table 32. Primary School Entry, Zhemgang Dzongkhag, (2010)Percentage of Children of Primary School Entry Age Entering Grade¹ (net intake rate)

Primary School Entry	2010
Percentage of children of primary school entry age entering grade ¹	52.5
Number of children of primary school entry age	31

Source: BMIS, 2010

Table 33. Children Reaching Last Grade of Primary School, Zhemgang Dzongkhag, (2010)

Percentage of children entering first grade of primary school who eventually reach the last grade of primary school (Survival rate to last grade of primary school)

Details	2010
Percent attending grade 0 last year who are in grade 1 this year	100.0
Percent attending grade 1 last year who are in grade 2 this year	100.0
Percent attending grade 2 last year who are attending grade 3 this year	100.0
Percent attending grade 3 last year who are attending grade 4 this year	99.2
Percent attending grade 4 last year who are attending grade 5 this year	98.8
Percent attending grade 5 last year who are attending grade 6 this year	100.0
Percent who reach grade 6 of those who enter grade 0	98.1

Source: BMIS, 2010

Table 34. Education Gender Parity, Zhemgang Dzongkhag, (2010)

Education gender parity Ratio of adjusted net attendance ratios of girls to boys, in primary and secondary school

Education Gender Parity	2010
Primary school adjusted net attendance ratio (NAR), girls	91.5
Primary school adjusted net attendance ratio (NAR), boys	88.7
Gender parity index (GPI) for primary school adjusted NAR	1.03
Secondary school adjusted net attendance ratio (NAR), girls	55.2
Secondary school adjusted net attendance ratio (NAR), boys	62.5
Gender parity index (GPI) for secondary school adjusted NAR	0.88

Source: BMIS, 2010

Table 35. Summary of Crime Reports by Nature of Crime, Zhemgang Dzongkhag, (2009 ~ 2011)

Nature of Crime	(Incident)		
	2009	2010	2011
Attempt, aiding and abetting, solicitation and criminal conspiracy	n.a	n.a	n.a
Homicide	n.a	n.a	n.a
Assault, battery and related offences	n.a	n.a	n.a
Kidnapping and related offences	n.a	n.a	n.a
Sexual offence	n.a	n.a	n.a
Offence against infant, child, mentally disabled and incompetent person	n.a	n.a	n.a
Arson and related offences	n.a	n.a	n.a
Burglary, trespass and related offences	n.a	n.a	n.a
Larceny, robbery, armed robbery and related offences	n.a	n.a	n.a
Money laundering and smuggling	n.a	n.a	n.a
Embezzlement and bribery	n.a	n.a	n.a
Forgery and related offences	n.a	n.a	n.a
Defamation and related offences	n.a	n.a	n.a
Treason, terrorism and related offences	n.a	n.a	n.a
Offences against cultural and national heritage	n.a	n.a	n.a
Offences against judicial authority	n.a	n.a	n.a
Prostitution and related offences	n.a	n.a	n.a
Offences against the public welfare	n.a	n.a	n.a
Offences related to public and civic duties	n.a	n.a	n.a
Offences related to public order and tranquillity	n.a	n.a	n.a
Offences against privacy	n.a	n.a	n.a
Computer offences	n.a	n.a	n.a
Offences related to firearms and weapons	n.a	n.a	n.a
Offences related to protected species, controlled and other harmful substances	n.a	n.a	n.a
Motor vehicle offences	n.a	n.a	n.a
Others	n.a	n.a	n.a
Total crimes	n.a	n.a	n.a

Source: Royal Bhutan Police, Zhemgang Dzongkhag

Table 36. Monthly Motor Vehicle Accidents, Zhemgang Dzongkhag, (2009~ 2011)

Month	2009	2010	2011
January	n.a	n.a	n.a
February	n.a	n.a	n.a
March	n.a	n.a	n.a
April	n.a	n.a	n.a
May	n.a	n.a	n.a
June	n.a	n.a	n.a
July	n.a	n.a	n.a
August	n.a	n.a	n.a
September	n.a	n.a	n.a
October	n.a	n.a	n.a
November	n.a	n.a	n.a
December	n.a	n.a	n.a
Total	n.a	n.a	n.a

Source: Royal Bhutan Police, Zhemgang Dzongkhag

Table 37. Causes of Motor Vehicle Accidents, Zhemgang Dzongkhag, (2009~2011)

Details	2009	2010	2011
Mechanical fault	n.a	n.a	n.a
Drunk driving	n.a	n.a	n.a
Bad weather	n.a	n.a	n.a
Without licence	n.a	n.a	n.a
Unknown causes	n.a	n.a	n.a
Other causes	n.a	n.a	n.a
All causes	n.a	n.a	n.a

Source: Royal Bhutan Police, Zhemgang Dzongkhag

Table 38. Attitudes Toward Domestic Violence, Zhemgang Dzongkhag, (2010)

Details	2010
Percentage of women age 15-49 years who believe a husband is justified in beating his wife/partner	
If goes out without telling him	35.3
If she neglects the children	53.9
If she argues with him	36.5
If she refuses sex with him	13.5
If she burns the food	11.8
For any of these reasons	65.5
Number of women age 15-49 years	331

Source: BMIS, 2010

Table 39. Land Area and Damages Caused by Types, Zhemgang Dzongkhag, (2007 ~ 2010)

Details	2007	2008	2009	2010
Dzongkhag area (Sq. Km)	2,421.74	2,421.74	2,421.74	2,421.74
Total cultivated land (Acres) ¹				
Damages caused by landslides ²	n.a	n.a	n.a	n.a
Farmland (acres)	n.a	n.a	n.a	n.a
Houses (Number)	n.a	n.a	n.a	n.a
Roads (Km)	n.a	n.a	n.a	n.a
Damages caused by floods ²	n.a	n.a	n.a	n.a
Farmland (acres)	n.a	n.a	n.a	n.a
Houses (Number)	n.a	n.a	n.a	n.a
Roads (Km)	n.a	n.a	n.a	n.a
Crops affected by drought (acres)	n.a	n.a	n.a	n.a
Crops damaged by wild animals (acres)	n.a	n.a	n.a	n.a
Incidence of earthquake (Number of cases reported) ²	n.a	n.a	n.a	n.a
Houses damaged by earthquakes (Number)	n.a	n.a	n.a	n.a
Number of forest fires ³	n.a	n.a	n.a	n.a
Acreage destroyed by forest fires	n.a	n.a	n.a	n.a
Acreage of reforestation ³	n.a	n.a	n.a	n.a
Houses/structures damaged by fires (Number) ³	n.a	n.a	n.a	n.a

Source: ¹Agriculture Sector, ²Environment Sector, ³ Forest Sector, Zhemgang Dzongkhag

Table 40. Average Monthly Temperature (Degree Centigrade), Zhemgang Dzongkhag , (2010)

Month/ Temperature	(Degree Celsius)		
	Maximum	Minimum	Average
January	15.4	4.8	10.10
February	14.4	5.7	10.05
March	18.3	10.3	14.30
April	20.6	12.8	16.70
May	21.3	14.7	18.00
June	22.5	16.7	19.60
July	23	17.6	20.30
August	22.7	17.2	19.95
September	22.9	16.3	19.60
October	21	13.3	17.15
November	17.7	10	13.85
December	15	4.9	9.95
Annual	234.8	144.3	189.55

Source: SYB, NSB

Table 41. Average Monthly Rainfall,Zhemgang Dzongkhag, (2010)

Month/ Monthly Rainfall	(Millimeter)		
	Maximum	Minimum	Average
January	2.8	0	1.4
February	9.1	0	4.6
March	124.6	67.6	96.1
April	82.8	42	62.4
May	157.8	99.6	128.7
June	618	135	376.5
July	715.9	187.8	451.9
August	675	74.5	374.8
September	156	39.2	97.6
October	72.6	38	55.3
November	5.8	3.5	4.7
December	0.8	0	0.4
Annual	2621.2	687.2	1654.2

Source: SYB, NSB

Table 42. Percentage of Forest Coverage, Number of Protected Spring and Lakes, Zhemgang Dzongkhag, (2010)

Details	2010
Forest coverage (%) ²	87.7
Number of snow fall at Dzongkhag headquater	0
Number of Protected spring water sources ¹	n.a
Number of Lakes ¹	1

Source: ¹Dzongkhag Forest Section, ²Tenth Plan Documents, GNHC

Table 43. Disposal of Childs Faeces, Zhemgang Dzongkhag, (2010)

Percent distribution of children age 0-2 years according to place of disposal of child's faeces, and the percentage of children age 0-2 years whose stools were disposed of safely the last time the child passed stools

Disposal of Childs Faeces	2010
Place of disposal of child's faeces	
Child used toilet / latrine	14.2
Put / Rinsed into toilet or latrine	21.9
Put / Rinsed into drain or ditch	60.8
Thrown into garbage (solid waste)	1.3
Buried	0.0
Left in the open	1.1
Other	0.8
Total	100.0
Percentage of children whose stools were disposed of safely	36.1
Number of children age 0-2 years	119

Source: BMIS 2010

Table 44. Parliamentarians and Local Government Representatives, Zhemgang Dzongkhag, (2008 & 2011)

Details	2008	2011
Local governance (Number)		
Parliamentarians	3	3
Male	2	2
Female	1	1
Gups	8	8
Male	8	8
Female	-	-
Total gewog tshogpas ¹	69	35
Male	69	33
Female	-	2
Total Mangmis ¹	8	8
Male	8	8
Female	-	-
DYT members ²	17	17
Male	17	17
Female	-	-
GYT members ¹	71	51
Male	71	49
Female	-	2
Polling stations ²	48	40
Eligible voters (18 years and above) ²	13,622	14,971
Male	n.a	7,442
Female	n.a	7,529
% of Voters turnout during election	n.a	5,995
Male	n.a	2,742
Female	n.a	3,253
Total election staff in Dzongkhag	3	4
Male	3	4
Female	-	-

Source: 1Gewog Administration, 2Election Sector, Zhemgang Dzongkhag.

Table 45. Parliamentarians and Local Government Election Expenditures, Zhemgang Dzongkhag, (2008 & 2011)

Details	Amount (Nu)
2008	
Parliamentarians (Number)	n.a
National council	n.a
National assembly	n.a
2011	
Local government	
Gup	n.a
Mangmi	n.a
Tsogpa	n.a

Source: Election Office, Zhemgang Dzongkhag

Table 46. Government Finance Expenditures, Zhemgang Dzongkhag, (2009 ~ 2011)

Details Sectors	2009			2010			2011		
	Current	Capital	Total	Current	Capital	Total	Current	Capital	Total
Civil	n.a	n.a	n.a	n.a	n.a	n.a	n.a	n.a	n.a
Agriculture	n.a	n.a	n.a	n.a	n.a	n.a	n.a	n.a	n.a
Livestock	n.a	n.a	n.a	n.a	n.a	n.a	n.a	n.a	n.a
Forestry	n.a	n.a	n.a	n.a	n.a	n.a	n.a	n.a	n.a
Education	n.a	n.a	n.a	n.a	n.a	n.a	n.a	n.a	n.a
Health	n.a	n.a	n.a	n.a	n.a	n.a	n.a	n.a	n.a
Urban Development & Housing	n.a	n.a	n.a	n.a	n.a	n.a	n.a	n.a	n.a
Roads	n.a	n.a	n.a	n.a	n.a	n.a	n.a	n.a	n.a
Bhutan post	n.a	n.a	n.a	n.a	n.a	n.a	n.a	n.a	n.a
Telecommunication	n.a	n.a	n.a	n.a	n.a	n.a	n.a	n.a	n.a
Power	n.a	n.a	n.a	n.a	n.a	n.a	n.a	n.a	n.a
Trade & industry	n.a	n.a	n.a	n.a	n.a	n.a	n.a	n.a	n.a
Total	n.a	n.a	n.a	n.a	n.a	n.a	n.a	n.a	n.a
Total plan outlay	n.a	n.a	n.a	n.a	n.a	n.a	n.a	n.a	n.a

Source: Dzongkhag Administration, Zhemgang Dzongkhag

Table 47. Dzongkhag 9th and 10th Five Year Plan Outlays, Zhemgang Dzongkhag

Sectors	9 FYP		10 FYP	
	Current	Capital	Current	Capital
Civil	78.1	21.3		48.2
Agriculture	34.5	26.5		22.5
Livestock	20.3	14.1		4.6
Forestry	8.3	5.0		4.0
Education	195.3	164.6		
Health	99.3	28.5		49.0
Urban development & housing	3.8	64.4		119.0
Roads	9.2			
Bhutan post				
Telecommunication				
Power	5.9			
Trade & industry	3.5	13.5		247.3
Total	458.2	337.8		
Total plan outlay				

Source:Dzongkhag Administration Zhemgang Dzongkhag

Table 48. Dzongkhag 9th and 10th Five Year Plan Expenditure, Zhemgang Dzongkhag

(in million Nu.)

Sectors	9 FYP		10 FYP	
	Current	Capital	Current	Capital
Civil	n.a	n.a	n.a	n.a
Agriculture	n.a	n.a	n.a	n.a
Livestock	n.a	n.a	n.a	n.a
Forestry	n.a	n.a	n.a	n.a
Education	n.a	n.a	n.a	n.a
Health	n.a	n.a	n.a	n.a
Urban development & housing	n.a	n.a	n.a	n.a
Roads	n.a	n.a	n.a	n.a
Bhutan post	n.a	n.a	n.a	n.a
Telecommunication	n.a	n.a	n.a	n.a
Power	n.a	n.a	n.a	n.a
Trade & industry	n.a	n.a	n.a	n.a
Total	n.a	n.a	n.a	n.a
Total plan expenditure	n.a	n.a	n.a	n.a

Source:Dzongkhag Administration, Zhemgang Dzongkhag

Table 49. Gewog 9th and 10th Five Year Plan Outlays,Zhemgang Dzongkhag

(In million Nu.)

Sectors	9 FYP		10 FYP	
	Current	Capital	Current	Capital
Civil	n.a	n.a	n.a	n.a
Agriculture	n.a	n.a	n.a	n.a
Livestock	n.a	n.a	n.a	n.a
Forestry	n.a	n.a	n.a	n.a
Education	n.a	n.a	n.a	n.a
Health	n.a	n.a	n.a	n.a
Urban development & housing	n.a	n.a	n.a	n.a
Roads	n.a	n.a	n.a	n.a
Bhutan post	n.a	n.a	n.a	n.a
Telecommunication	n.a	n.a	n.a	n.a
Power	n.a	n.a	n.a	n.a
Trade & industry	n.a	n.a	n.a	n.a
Total	n.a	n.a	n.a	n.a
Total plan outlay	n.a	n.a	n.a	n.a

Source:Planning Unit, Zhemgang Dzongkhag

Table 50. Gewog 9th and 10th Five Year Plan by Expenditures, Zhemgang Dzongkhag

(In million Nu.)

Sectors	9 FYP		10 FYP	
	Current	Capital	Current	Capital
Civil	n.a	n.a	n.a	n.a
Agriculture	n.a	n.a	n.a	n.a
Livestock	n.a	n.a	n.a	n.a
Forestry	n.a	n.a	n.a	n.a
Education	n.a	n.a	n.a	n.a
Health	n.a	n.a	n.a	n.a
Urban development & housing	n.a	n.a	n.a	n.a
Roads & bridges	n.a	n.a	n.a	n.a
Religion & cultural	n.a	n.a	n.a	n.a
Telecommunication	n.a	n.a	n.a	n.a
Power	n.a	n.a	n.a	n.a
Trade & Industry	n.a	n.a	n.a	n.a
Total	n.a	n.a	n.a	n.a
Total plan outlay	n.a	n.a	n.a	n.a

Source:Dzongkhag Administration, Zhemgang Dzongkhag

Table 51. Employed Persons by Age, Sex and Area of Residence, Zhemgang Dzongkhag, (2008 ~ 2011)

Details	(Number)			
	2008	2009	2010	2011
Total	n.a	n.a	10900	n.a
Male	n.a	n.a	5700	n.a
Female	n.a	n.a	5200	n.a
Rural Total	n.a	n.a	10000	n.a
Male	n.a	n.a	5100	n.a
Female	n.a	n.a	4900	n.a
Urban Total	n.a	n.a	900	n.a
Male	n.a	n.a	600	n.a
Female	n.a	n.a	300	n.a

Source : Labour Force Survey, MoLHR

Table 52. Employment by Industries, Age Group and Sex, Zhemgang Dzongkhag, (2009 ~ 2011)

Details	2009	2010	2011
Total labour force (Number)	n.a	11,100	10,200
Total employed (%)	n.a	98.2	98.0
Male	n.a	5,700.0	4,700.0
Female	n.a	5,200.0	5,300.0
Unemployment rate	n.a	1.8	2.0
Total employed in Agriculture (%)	n.a	n.a	83.3
Male	n.a	n.a	3,800.0
Female	n.a	n.a	4,700.0
Total employed in Industries (%)	n.a	n.a	n.a
Male	n.a	n.a	n.a
Female	n.a	n.a	n.a
Total employed in Services (%)	n.a	n.a	n.a
Male	n.a	n.a	n.a
Female	n.a	n.a	n.a
Total unemployed by area (%)	n.a	n.a	n.a
Urban	n.a	n.a	n.a
Rural	n.a	n.a	n.a
Total un-employed by education (%)	n.a	n.a	n.a
Total unemployed grade XII and above	n.a	n.a	n.a
Total unemployed below grade XII	n.a	n.a	n.a
Total under employed (%)	n.a	n.a	n.a
Employed by age-group (%)	n.a	n.a	n.a
15-17 years	n.a	n.a	n.a
18-24 years	n.a	n.a	n.a
25-64 years	n.a	n.a	n.a
65 years and above	n.a	n.a	n.a
Unemployed by age-group (%)	n.a	n.a	n.a
15-17 years	n.a	n.a	n.a
18-24 years	n.a	n.a	n.a
25-64 years	n.a	n.a	n.a
65 years and above	n.a	n.a	n.a
Labor force participation rate (%)	n.a	70.70	73.9
Male participation rate	n.a	77.3	73.4
Female participation rate	n.a	63.9	74.3

Source : Labour Force Survey, MoLHR

Table 53. Child Labour, Zhemgang Dzongkhag, (2010)

Percentage of Children by Involvement in Economic Activity and Household Chores
During the Past Week, According to Age Groups, and Percentage of Children Age
5-14 Involved in Child Labour

Child labour	2010
Percentage of children age 5-11 involved in	
Economic activity	
Working outside household	
Paid work	0.4
Unpaid work	1.1
Working for family business	34.7
Economic activity for at least one hour	35.4
Household chores less than 28 hours	35.1
Household chores for 28 hours or more	0.1
Child labour	35.5
Number of children age 5-11	266
Percentage of children age 12-14 involved in	n.a
Economic activity	n.a
Working outside household	n.a
Paid work	1.1
Unpaid work	5.2
Working for family business	45.4
Economic activity less than 14 hours	42.0
Economic activity for 14 hours or more	4.4
Household chores less than 28 hours	53.8
Household chores for 28 hours or more	0.2
Child labour	4.6
Number of children age 12-14	140
Total child labour [1]	24.8
Number of children age 5-14 years	406

Source: BMIS,2010

Table 54. Child Labour and School Attendance, Zhemgang Dzongkhag, (2010)

Percentage of children age 5-14 years involved in child labour who are attending school, and percentage of children age 5-14 years attending school who are involved in child labour

Child Labour and School Attendance	2010
Percentage of children involved in child labour	24.8
Percentage of children attending school	82.0
Number of children age 5-14 years	406
Percentage of child labourers who are attending school	88.2
Number of children age 5-14 years involved in child labour	101
Percentage of children attending school who are involved in child labour	26.7
Number of children age 5-14 years attending school	333

Source: BMIS,2010

Table 55. Agriculture Production and Average Prices by COMmodities, Zhemgang Dzongkhag, (2007 ~ 2010)

Details	2007	2008	2009	2010
Paddy				
Area (Acres)	2012	1328.86	1267	4,836
Production (MT)	1793	1989	1117	1,767
Price per Kg(Nu.)	n.a	n.a	n.a	
Maize				
Area (Acres)	2328	3620.0073	3226	13022
Production (MT)	1916	3773.53	3028	4,744
Price per Kg(Nu.)	n	n.a	n.a	
Wheat				
Area (Acres)	693	140.79	177	299
Production (MT)	319	89	93	89
Price per Kg(Nu.)	n.a	n.a	n.a	n.a
Barley				
Area (Acres)	296	95.6137	97	53
Production (MT)	132	57.4	47	20
Price per Kg(Nu.)	n.a	n.a	n.a	n.a
Buckwheat				
Area (Acres)	428	365.56	n.a	556
Production (MT)	186	239	n.a	178.52
Price per Kg(Nu.)	n.a	n.a	n.a	n.a
Millet				
Area (Acres)	1151	305.5637	n.a	264
Production (MT)	300	160.47	n.a	153.35
Price per Kg(Nu.)	n.a	n.a	n.a	n.a
Fruits				
Apples				
Number of fruit bearing trees	449	n.a	103	n.a
Production (Kg)	1	n.a	3	n.a
Price per Kg(Nu.)	n.a	n.a	n.a	n.a
Oranges/ Mandarin				
Number of fruit bearing trees	132981	95000	205068	n.a
Production (Kg)	3349	1690.3	5296	n.a
Price per Kg(Nu.)	n.a	n.a	n.a	n.a
Banana				
Number of fruit bearing trees	10801	n.a	2812	n.a
Production (Kg)	149	n.a	39	n.a

Price per Dozen(Nu.)	n.a	n.a	n.a	n.a
Pear				
Number of fruit bearing trees	1904	n.a	44	n.a
Production (Kg)	83	3.9	1	n.a
Price per Kg(Nu.)	n.a	n.a	n.a	n.a
Plum				
Number of fruit bearing trees	949	n.a	176	n.a
Production (Kg)	25	5.9	6	n.a
Price per Kg(Nu.)	n.a	n.a	n.a	n.a
Areca Nut				
Production (Pon)	2139	n.a	3163	n.a
Production (Nu.)	15	n.a	59	n.a
Price per 80 Piece/ Pon(Nu.)	n.a	n.a	n.a	n.a
Vegetables and Spices				
Potato				
Production (kg)	226	966.2	319	n.a
Production (Nu.)	n.a	n.a	n.a	n.a
Price per Kg(Nu.)	n.a	n.a	n.a	n.a
Chili				
Production (kg)	122	214.8	141	n.a
Production (Nu.)	n.a	n.a	n.a	n.a
Price per Kg(Nu.)	n.a	n.a	n.a	n.a
Onion				
Production (kg)	n.a	n.a	20	n.a
Production (Nu.)	n.a	n.a	n.a	n.a
Price per Kg(Nu.)	n.a	n.a	n.a	n.a
Cabbage				
Production (kg)	55	39.85	36	n.a
Production (Nu.)	n.a	n.a	n.a	n.a
Price per Kg(Nu.)	n.a	n.a	n.a	n.a
Cauliflower				
Production (kg)	24	14.42	12	n.a
Production (Nu.)	n.a	n.a	n.a	n.a
Price per Kg(Nu.)	n.a	n.a	n.a	n.a
Asparagus				
Production (Bundles)	n.a	3.77	n.a	n.a
Production (Nu.)	n.a	n.a	n.a	n.a
Price per bundle (Nu.)	n.a	n.a	n.a	n.a
Tomato				
Production (Kg)	19	6.38	18	n.a

Production (Nu.)	n.a	n.a	n.a	n.a
Price per Kg(Nu.)	n.a	n.a	n.a	n.a
Carrot				
Production (Kg)	4	3.52	2	n.a
Production (Nu.)	n.a	n.a	n.a	n.a
Price per Kg(Nu.)	n.a	n.a	n.a	n.a
Egg Plant (Brinjal)				
Production (Kg)	65	n.a	22	n.a
Production (Nu.)	n.a	n.a	n.a	n.a
Price per Kg(Nu.)	n.a	n.a	n.a	n.a
Raddish				
Production (Kg)	136	213.41	167	n.a
Production (Nu.)	n.a	n.a	n.a	n.a
Price per Kg(Nu.)	n.a	n.a	n.a	n.a
Ginger				
Production (Kg)	59	50.57	23	n.a
Production (Nu.)	n.a	n.a	n.a	n.a
Price per Kg(Nu.)	n.a	n.a	n.a	n.a
Cardamom				
Production (Kg)	n.a	1.57	n.a	n.a
Production (Nu.)	n.a	n.a	n.a	n.a
Price per Kg(Nu.)	n.a	n.a	n.a	n.a
Garlic				
Production (Kg)	23	27.8	3	n.a
Production (Nu.)	n.a	n.a	n.a	n.a
Price per Kg(Nu.)	n.a	n.a	n.a	n.a
Oil seeds and legumes				
Lentils				
Production (Kg)	n.a	n.a	n.a	n.a
Production (Nu.)	n.a	n.a	n.a	n.a
Price per Kg(Nu.)	n.a	n.a	n.a	n.a
Mustards				
Production (Kg)	91	109.2	87	n.a
Production (Nu.)	n.a	n.a	n.a	n.a
Price per Kg(Nu.)	n.a	n.a	n.a	n.a
Beans				
Production (Kg)	96	117.87	56443	n.a
Production (Nu.)	n.a	n.a	n.a	n.a
Price per Kg(Nu.)	n.a	n.a	n.a	n.a

Source: Agriculture Sector, Zhemgang Dzongkhag

Table 56. Agriculture Infrastructures and Other Facilities , Zhemgang Dzongkhag, (2007 ~ 2010)

Details	2007	2008	2009	2010
Irrigation for agriculture				
Number of irrigation channels	40	43	44	45
Functional	38	41	42	43
Non-Functional	2.0	2.0	2.0	2.0
Total length of channels (Km)	88	91	107	109
Area covered by irrigation (Acres)	n.a	n.a	n.a	n.a
Number of households benefitted	1,079	1,146	1,155	1,173
Number of food processing units	n.a	n.a	n.a	n.a
Number of agriculture mills ¹	n.a	n.a	n.a	n.a
Number of livestock product processing units	-	-	-	-
Number of farmer association/groups	n.a	n.a	1	1
Agriculture	n.a	n.a	1	1
Livestock	n.a	n.a	n.a	n.a
Forestry	n.a	n.a	n.a	n.a
Number of power tillers	15	19	n.a	n.a

Note: 1 Including two traditional mills

Source: Agriculture Sector, Zhemgang Dzongkhag

Table 57: Livestock Population by Types, Zhemgang Dzongkhag, (2007~2010)

Details	2007	2008	2009	2010
Livestock (Number)				
Cattle	13,556	12,109	11,705	n.a
Local breed	12,290	10,451	9,915	n.a
Male	4,376	3,524	3,438	n.a
Female	7,914	6,927	6,477	n.a
Improved breed	1,266	1,658	1,790	n.a
Male	316	453	478	n.a
Female	950	1,205	1,312	n.a
Mithun	133	141	n.a	n.a
Bufallo	n.a	n.a	n.a	n.a
Male	n.a	n.a	n.a	n.a
Female	n.a	n.a	n.a	n.a
Horse	1,425	1,330	1,304	n.a
Local breed	1,360	1,315	1,262	n.a
Improved breed	65	15	42	n.a
Yak	N.A	N.A	N.A	n.a
Male	N.A	N.A	N.A	N.A
Female	N.A	N.A	N.A	N.A
Sheep	N.A	N.A	N.A	N.A
Local breed	N.A	N.A	N.A	N.A
Improved breed	N.A	N.A	N.A	N.A
Pig	1,106	1,042	996	n.a
Local breed	514	459	645	n.a
Improved breed	592	583	351	n.a
Poultry	7,812	6,365	7,413	n.a
Local breed	6,366	5,261	5,742	n.a
Improved breed	1,446	1,104	1,671	n.a
Goat	290	575	66	n.a

Note: Mithun includes Bamin, Jatsa & Jatsam

Source: Livestock Sector, Zhemgang Dzongkhag

Table 58: Livestock Productions, Zhemgang Dzongkhag, (2007~2010)

Details	2007	2008	2009	2010
Livestock products				
Fresh Milk (Liters)	896	784	596	n.a
Butter (Kg)	59	35	39	n.a
Fresh Cheese (Kg)	520	154	99	n.a
Processed cheese (kg)	n.a	n.a	n.a	n.a
Eggs (Dozen)	166773	33382	34197	n.a
Fish (Kg)	n.a	n.a	n.a	n.a
Beef (Kg)	57	19	42	n.a
Pork (Kg)	27	14	18	n.a
Yak Meat (Kg)	N.A	N.A	N.A	n.a
Mutton (Kg)	147	0	0	n.a
Honey (Gm)	n.a	n.a	n.a	n.a
Chicken (Kg)	3	3	2	n.a

Source: Livestock Sector, Zhemgang Dzongkhag

Table 59. Forestry Production, Zhemgang Dzongkhag, (2007 ~ 2010)

Details	2007	2008	2009	2010
Wood Forest Product ¹				
Log Form (Cft)	117,894	78,850	65,299	n.a
Fire wood (Cubic metres)	1,320	848	992	n.a
Flag Poles (Number)	n.a			n.a
Shinglap (Number of trees)	n.a	n.a	n.a	n.a
Cham (Number of trees)	n.a	n.a	n.a	n.a
Tsim (Number of trees)	n.a	n.a	n.a	n.a
Non-Wood Forest Product ²				
Mushroom (Kg)	n.a	n.a	n.a	n.a
Mushroom (Nu.)	n.a	n.a	n.a	n.a
Medicinal and Aromatic plants (Kg)	n.a	n.a	n.a	n.a
Cordyceps (Kg)	N.A	N.A	N.A	n.a
Cordyceps (Nu.)	N.A	N.A	N.A	n.a
Sand (Truck load)	n.a	n.a	n.a	n.a
Stones (Truck load)	n.a	4	277	n.a
Bamboo (Number)	n.a	n.a	n.a	n.a
Cane (Bundles)	n.a	n.a	n.a	n.a
Lemon grass (Kg)	n.a	n.a	n.a	n.a
Mining Sites (Number)				n.a
Quarry Sites				
Municipal Waste Disposal Sites	2	2	2	2
Environmental Clearance Issued	6	15	14	n.a

Note: Cordyceps amount collected only for auction royalty charges.

Source: ¹Divisional Forest, ²Thromsingla National Park, Zhemgang Dzongkhag

Table 61. Electricity Generating Stations and Capacities, Zhemgang Dzongkhag, (2009 & 2010)

Stations	2009			2010		
	Installed capacity (no.x MW)	Generating capacity (MW)	Peak generation (MU)	Installed capacity (no.x MW)	Generating capacity (MW)	Peak generation (MU)
Kekhar	1 X 0.01	0.01	0.01	n.a	n.a	n.a
Tingtibi	n.a	n.a	n.a	n.a	n.a	n.a
	n.a	n.a	n.a	n.a	n.a	n.a
	n.a	n.a	n.a	n.a	n.a	n.a
	n.a	n.a	n.a	n.a	n.a	n.a
	n.a	n.a	n.a	n.a	n.a	n.a
Diesel generation stations list the name	n.a	n.a	n.a	n.a	n.a	n.a
	n.a	n.a	n.a	n.a	n.a	n.a
	n.a	n.a	n.a	n.a	n.a	n.a
	n.a	n.a	n.a	n.a	n.a	n.a
	n.a	n.a	n.a	n.a	n.a	n.a
	n.a	n.a	n.a	n.a	n.a	n.a
Other diesel stations list the name	n.a	n.a	n.a	n.a	n.a	n.a
	n.a	n.a	n.a	n.a	n.a	n.a
	n.a	n.a	n.a	n.a	n.a	n.a
	n.a	n.a	n.a	n.a	n.a	n.a

Source : SYB, 2010

Table 61. Number of Households by Area, Zhemgang Dzongkhag, (2009 ~ 2011)

Details	2009	2010	2011
Total number of household in Urban	n.a	n.a	n.a
Total number of household in Rural	n.a	n.a	n.a

Source: BMIS, 2010

Table 62. Number of Building Permits issued by Towns, Zhemgang Dzongkhag, (2009 ~ 2011)

new buildings	2009	2010	2011
n.a	n.a	n.a	n.a
n.a	n.a	n.a	n.a

Source: Dzongkhag Municipal, Zhemgang Dzongkhag

Table 63. Number of Establishment by Type and Size, Zhemgang Dzongkhag, (2009 ~ 2011)

Details	2009	2010	2011
Industries by type (Number)			
Agro based	4	4	4
Forestry based	21	15	19
Mineral based	0	0	0
Others	1	1	1
Industries by scale (Number)			
Large	0	0	0
Medium	1	0	0
Small	2	0	0
Cottage	318	20	24
Contract firms (Number)			
Large	0	n.a	n.a
Medium	0	n.a	n.a
Small	289	n.a	n.a

Source: Regional Trade Office, Trongsa

Table 64. Number of Wholesale, Retail Trade and Industrial Licenses Issued, Zhemgang Dzongkhag , (2007 ~ 2011)

Details	(Number)				
	2007	2008	2009	2010	2011
Trade and Industries					
Micro & retail trade licences issued	n.a	n.a	n.a	640	675
Micro & retail trade licences in operation	n.a	n.a	241	246	281
Wholesale trade licences issued	n.a	n.a	n.a	7	7
Wholesale trade licences in operation	n.a	n.a	2	4	4
Services licences issued	n.a	n.a		316	330
Services licences in operation	n.a	n.a	173	159	174
Manufacturing licenses issued	n.a	n.a	n.a	31	35
Manufacturing licenses in operation	n.a	n.a	16	16	20

Source: Regional Trade Office, Trongsa

Table 65. Number of Public Transport and Facilities, Zhemgang Dzongkhag, (2007 ~ 2011)

Details	(Number)				
	2007	2008	2009	2010	2011
Public Service Transport	n.a	n.a	n.a	n.a	n.a
Bus	n.a	n.a	n.a	n.a	n.a
Taxi	n.a	n.a	n.a	n.a	n.a
Motor vehicle registration	n.a	n.a	n.a	n.a	n.a
Heavy	n.a	n.a	n.a	n.a	n.a
Medium	n.a	n.a	n.a	n.a	n.a
Small	n.a	n.a	n.a	n.a	n.a
Two wheeler	n.a	n.a	n.a	n.a	n.a
Auto Mobile workshop ³	n.a	n.a	1	1	1
Bus stations	1	1	1	1	1

Source: RSTA Regional Office, Zhemgang Dzongkhag

Table 66: Roads and Bridges, Zhemgang Dzongkhag, (2007~2011)

Details	2007	2008	2009	2010	2011
Roads (Length in Km)					
Farm roads ¹	18.25	25.00	37.28	46.06	112.80
Feeder roads ²	62.70	62.70	62.70	77.70	77.70
Forest roads ¹	13.06	13.06	13.06	13.06	13.06
Highways/Dzongkhag roads	282.00	282.00	282.00	282.00	282.00
Bridges (Number)					
Suspension bridge ¹	6.00	7.00	7.00	7.00	7.00
Suspended ¹	16.00	18.00	18.00	18.00	18.00
Bailey bridges ²	n.a	n.a	n.a	n.a	n.a
Traditional bridges ¹	n.a	n.a	n.a	n.a	n.a

Source: ¹Dzongkhag Engineering Section, ²Department of Roads, Zhemgang Dzongkhag

Table 67. Telecommunications, Zhemgang Dzongkhag , (2007 ~ 2011)

(Number)

Telecommunications	2007	2008	2009	2010	2011
Households with fixed telephone connections	473	520	547	543	512
Tashi cell users	n.a	n.a	n.a	n.a	n.a
B.mobile users	n.a	n.a	n.a	n.a	n.a
Community information centres	N.A	N.A	N.A	3	3
Gewogs accessible to mobile services	2.0	2.0	2	8	8
Households with internet access	n.a	n.a	n.a	n.a	69
Bhutan post office	2	2	2	2	2

Source: Gewog Administration Office & Regional Office, Zhemgang Dzongkhag

Table 68. Number of Establishment in Banking and Finance, Zhemgang Dzongkhag, (2009 ~ 2011)

(number)

Number of establishments	2009	2010	2011
RICBL	0	1	1
BDFCL	1	1	1
BNB	0	0	0
Druk PNB	0	0	0
T Bank	0	0	0
Bhutan insurance limited	0	0	0
BOB	1	1	1

Source: Financial Institutions, Zhemgang Dzongkhag

Table 69. Number of account holders in Banks, Zhemgang Dzongkhag, (2010)

Number of facilities	Number of account holders (2010)				
	Loan	savings	current	fixed deposit	recurring deposit
RICB	n.a	n.a	n.a	n.a	n.a
BDFCL	741	748	54	13	31
BNB	N.A	N.A	N.A	N.A	N.A
PNB	N.A	N.A	N.A	N.A	N.A
T Bank	N.A	N.A	N.A	N.A	N.A
Bhutan insurance limited	N.A	N.A	N.A	N.A	N.A
BOB	n.a	n.a	n.a	n.a	n.a

Source: Financial Institutions, Zhemgang Dzongkhag

Table 70. Number of Administrative Units, Zhemgang Dzongkhag, (2007 ~ 2011)

Details	2007	2008	2009	2010	2011
Administration (Number)					
Drungkhags	1	1	1	1	1
Gewogs	8	8	8	8	8
Chiwogs	64	64	64	64	40
Villages	n.a	n.a	n.a	n.a	n.a
Households	3,379	3,379	3,379	3379	3379
Towns	3	3	3	3	3
Number of Police stations	2	2	2	2	2

Table 71. Recreation, Tourist Visitors and Accommodation, Zhemgang Dzongkhag, (2007 ~ 2011)

Details	2007	2008	2009	2010	2011
Number of children park	-	-	-	0	0
Number of hotels	n.a	n.a	n.a	n.a	n.a
Number of restaurants	n.a	n.a	n.a	n.a	n.a
Number of drayangs	0	0	0	0	0
Number of discotheques	0	0	0	0	0
Number of tourist visitors	n.a	n.a	n.a	n.a	n.a

Source: Administration Office, Zhemgang Dzongkhag

National Statistics Bureau
ROYAL GOVERNMENT OF BHUTAN
P.O. Box No. 338 Thimphu
Telephone No: +975-2-322753/333296/325402
Fax: +975-2-323069

www.nsb.gov.bt

ISBN-978-99936-28-11-8