




ANNUAL DZONGKHAG STATISTICS 2011

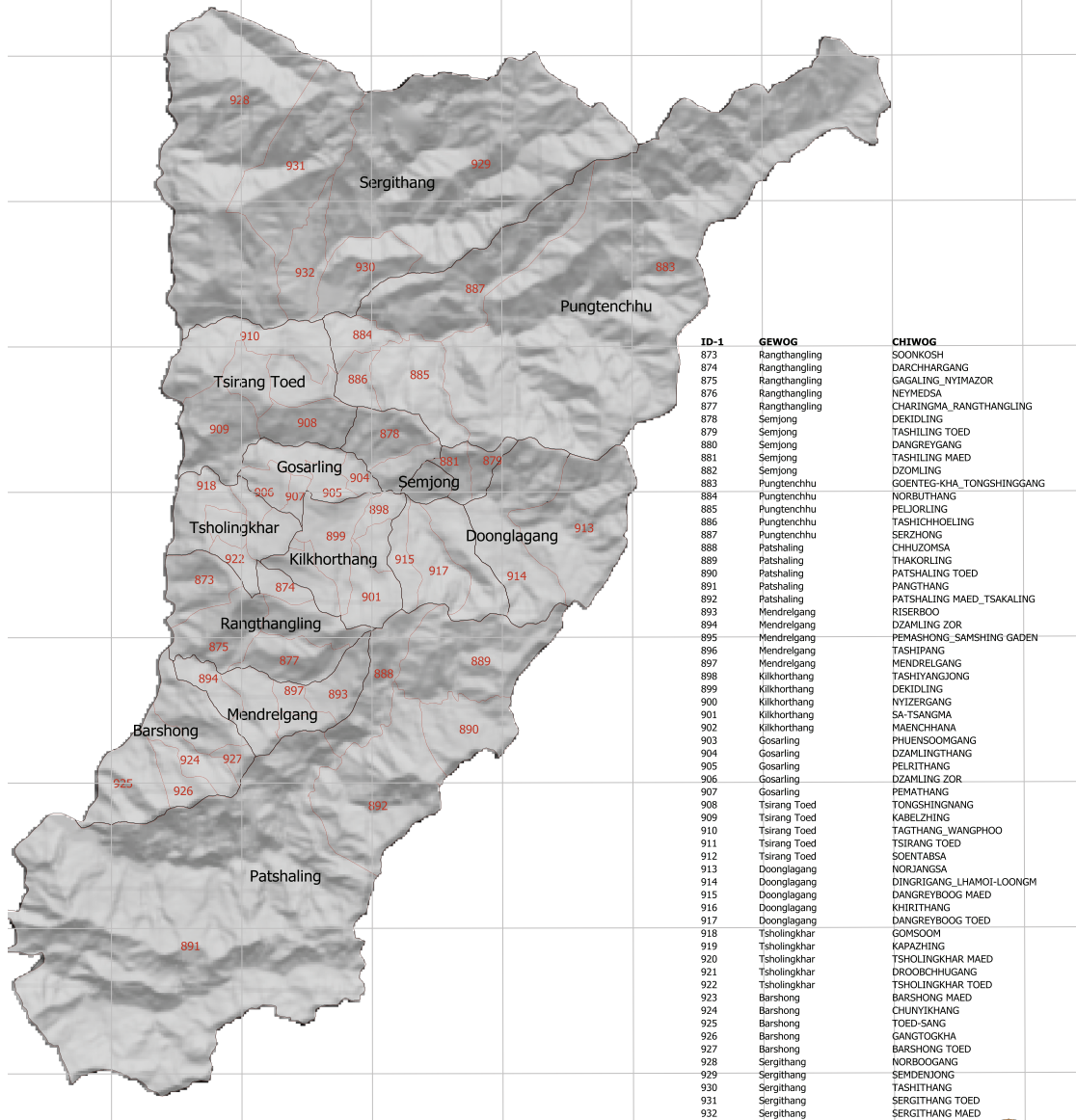
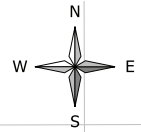


**Dzongkhag Administration
TSIRANG**




 Gewog Boundries
 Chiwog Boundries

Tsirang Gewogs and Chiwogs as per the final delimitation order issued by the Election Commission of Bhutan



ID-1	GEWOG	CHIWOG
873	Rangthangling	SOONKOSH
874	Rangthangling	DARCHHARGANG
875	Rangthangling	GAGALING_NYIMAZOR
876	Rangthangling	NEYMEDSA
877	Rangthangling	CHARINGMA_RANGTHANGLING
878	Semjong	DEKIDLING
879	Semjong	TASHILING TOED
880	Semjong	DANGREYANG
881	Semjong	TASHILING MAED
882	Semjong	DZOMLING
883	Pungtenchhu	GOENTEG-KHA_TONGSHINGGANG
884	Pungtenchhu	NORBUTHANG
885	Pungtenchhu	PELJORLING
886	Pungtenchhu	TASHIHOELING
887	Pungtenchhu	SERZHONG
888	Patshaling	CHHUZOMSA
889	Patshaling	THAKORLING
890	Patshaling	PATSHALING TOED
891	Patshaling	PANGTHANG
892	Patshaling	PATSHALING MAED_TSAKALING
893	Mendrelgang	RISERBOO
894	Mendrelgang	DZAMLING ZOR
895	Mendrelgang	PEMASHONG_SAMSHING GADEN
896	Mendrelgang	TASHIPANG
897	Mendrelgang	MENDRELGANG
898	Kilkhorthang	TASHIYANGJONG
899	Kilkhorthang	DEKIDLING
900	Kilkhorthang	NYIZERGANG
901	Kilkhorthang	SA-TSANGMA
902	Kilkhorthang	MAENCHHANA
903	Gosarling	PHUENSOOMGANG
904	Gosarling	DZAMLINGTHANG
905	Gosarling	PELRITHANG
906	Gosarling	DZAMLING ZOR
907	Gosarling	PEMATHANG
908	Tsirang Toed	TONGSHINGNANG
909	Tsirang Toed	KABELZHING
910	Tsirang Toed	TAGTHANG_WANGPHOO
911	Tsirang Toed	TSIRANG TOED
912	Tsirang Toed	SOENTABSA
913	Doonglagang	NORJANGSA
914	Doonglagang	DINGRIGANG_LHAMOI-LOONGM
915	Doonglagang	DANGREYBOOG MAED
916	Doonglagang	KHIRITHANG
917	Doonglagang	DANGREYBOOG TOED
918	Tsholingkhar	GOMSOM
919	Tsholingkhar	KAPAZHING
920	Tsholingkhar	TSHOLINGKHAR MAED
921	Tsholingkhar	DROOBCHHUGANG
922	Tsholingkhar	TSHOLINGKHAR TOED
923	Barshong	BARSHONG MAED
924	Barshong	CHUNYIKHANG
925	Barshong	TOED-SANG
926	Barshong	GANGTOGKHA
927	Barshong	BARSHONG TOED
928	Sergithang	NORBOOGANG
929	Sergithang	SEMENDJONG
930	Sergithang	TASHITHANG
931	Sergithang	SERGITHANG TOED
932	Sergithang	SERGITHANG MAED



© 2011
National Statistics Bureau

All rights reserved

Published by
National Statistics Bureau

Contact
National Statistics Bureau
PO Box No. 338
Telephone: +975-2-322753/333296
Fax: +975-2-323069
Website: www.nsb.gov.bt

Statistics Unit
Tsirang Dzongkhag
Telephone: +975-06-471119
Fax: +975-06-471132
Email:
jame_tshering@hotmail.com

Second Issue
Catalogue No. 104

Contents

	page
Preface	i
Background of Dzongkhag	ii
Abbreviations	iii
Section 1. Population (Tables 1-2)	1-2
Population by Age-Group and Sex	1
Population Density and Sex Ratio	2
Section 2. Births, Deaths, Marriages, and Divorces (Tables 3-10)	3-6
Total number Live Births, Deaths, Marriages, and Divorces	3
Adolescent Birth Rate and Total Fertility Rate	3
Early Childbearing	4
Use of Contraception	4
Antenatal Care Provider	5
Number of Antenatal Care Visits	5
Assistance During Delivery	6
Place of Delivery	6
Section 3. Health and Nutrition (Tables 11-26)	7-15
Health Infrastructures, Facilities and Personnel	7
Hospital Admission and Average Length of Stay	8
Number of Surgeries	8
Number of Dental Services	8
Number of Top Ten Morbidity	9
Child Disability	9
Nutritional Status of Children	10
Initial Breastfeeding	10
Duration of Breastfeeding	11
Low Birth Weight Infants	11
Neonatal Tetanus Protection	11
Solid Fuel Use	12
Use of Improved Water Sources	13
Household Water Treatment	14
Time to Source of Drinking Water	14
Types of Sanitation Facilities	15

Section 4. Education (Tables 27-34)	16-23
Number of Schools, Institutions, Teachers and Students	16
School Enrolment by Grade and Sex	19
Student by Age-Group, Sex and by Level	21
Literacy Among Young Women	22
School Readiness	22
Primary School Entry	23
Children Reaching Last Grade of Primary School	23
Education Gender Parity	23
Section 5. Law Enforcement, Courts, and Prisons (Tables 35-38)	24-26
Summary of Crime Reports by Nature of Crime	24
Monthly Motor Vehicle Accidents	25
Causes of Motor Vehicle Accidents	25
Attitudes Toward Domestic Violence	26
Section 6. Geography and Environment (Tables 39-43)	26-28
Land Area and Damages Caused by Types	26
Average Monthly Temperature	27
Average Monthly Rainfall	27
Percentage of Forest Coverage, Number of Protected Spring and Lakes	28
Disposal of Childs Faeces	28
Section 7. Elections and Local Government (Tables 44-45)	29-31
Parliamentarians and Local Government Representatives	29
Parliamentarians and Local Government election expenditures	30
Section 8. Royal Government Finances and Employment (Tables 46-50)	31-33
Government Finance Expenditures	31
Dzongkhag 9th & 10th Five Year Plan Outlays	32
Dzongkhag 9th and 10th Five Year Plan Expenditure	32
Gewog 9th and 10th Five Year Plan Outlays	33
Gewog 9th and 10th Five Year Plan by Expenditures	33
Section 9. Labor Force, Employment, and Earnings (Tables 51-54)	34-37
Employed Persons by Age, Sex and Area of Residence	34
Employment by Industries, Age-Group and Sex	35
Child Labour	36
Child Labour and School Attendance	37

Section 10. Prices (Tables 55-55)	38-40
Agricultural Production & Average prices by commodities	38
Section 11. Agriculture (Tables 56-58)	41-43
Renewable Natural Resources	41
Agricultural Production by Types	41
Livestock Population by Types	42
Livestock Productions	43
Section 12. Forestry, Fishing and Mining (Tables 59-59)	44-44
Forestry Productions	44
Section 13. Energy and Utilities (Tables 60-60)	45-45
Electricity Generating Stations And Their Capacities	45
Section 14. Construction and Housing (Tables 61-62)	45-45
Number of Households by Area	45
Number of Building Permits issued by Towns	45
Section 15. Manufactures (Tables 63-63)	46-46
Number of Establishment by Type and Size	46
Section 16. Wholesale and Retail Trade (Tables 64-64)	46-46
Number of Wholesale, Retail Trade and Industrial licenses issued	46
Section 17. Transportation (Tables 65-66)	47-47
Number of Public Transport and Facilities	47
Roads and Bridges	47
Section 18. Information and Communications (Tables 67-67)	48-48
Telecommunications	48
Section 19. Banking, Finance, and Insurance (Tables 68-69)	48-49
Number of Establishment in Banking and Finance	48
Number of account holders in Banks	49
Section 20. Arts, Recreation, Accommodation and Monuments (Tables 70-71)	49-49
Number of Administrative Units	49
Recreation, Tourist Visitors and Accommodation	49



Preface

The Annual Dzongkhag Statistics of Tsirang is the second in the series of publications. It attempts to provide comprehensive statistics of Tsirang Dzongkhag and will be published annually.

The report contains statistics on demographic and socio-economic, environment, culture, local governance and infrastructures of the Dzongkhag. The statistical data for this publication are collected and compiled from various sectors and through primary sources.

We hope that this report will serve as a source of information and guiding tool for micro-level planning and decision-making in the Dzongkhag. Statistics office, Tsirang would like to thank and acknowledge the support and cooperation of all sector heads concerned for providing timely information for this report. Without their support, this publication would not have been possible. Through this initiative, we also hope that the maintenance of sectoral information and updation in the Dzongkhag will become more systematic and efficient henceforth.

Since this report is the second publication and with information source being from numerous sectors, we expect there may be certain deficiencies in terms of coverage and updation. However, there will be continuous efforts made to improve its coverage and quality in our future publications. Your comments and suggestions in this regard will be highly appreciated.

Statistics Unit, Tsirang Dzongkhag.

Background

Tsirang Dzongkhag, encompassing a total area of 638.8 Sq.Km with an altitude ranging from 400-3600 meters above the sea level, has twelve Gewogs, namely Barshong, Patshaling, Dunglagang, Gosaling, Kikorthang, Mendrelgang, Sergithang, Phuentenchu, Rangthangling, Semjong, Tsholingkhar and Tsirangtoe. It is located along the Wangdue Phodrang – Sarpang National High way, making it easy access to business opportunities. All twelve gewogs are connected with road network.

As per the PHCB 2005, Tsirang has 3,651 households and a total population of 18,667 out of which, 17,001 live in the rural areas. The projected population for 2011, based on PHCB 2005, is 20,254.

A favorable terrain condition coupled with easy road accessibility has brought manifold changes in the socio-economic development of Tsirang. It is also considered as one of the prosperous Dzongkhags in the country.

The main source of income for the people of Tsirang are from citrus, poultry products, livestock farms, and more recently the organic-farming has become very popular with suitable climate and through the initiatives of RNR sectors.

All the gewogs are connected with electricity and Mobile services, changing the lifestyles of rural people, which may have very good impact on rural urban migration. Six gewogs already have community information centres built and soon rest of the gewogs will have the community information centers in their gewogs, making the lives of rural people easy access for information and communication technology.

Indeed, the Dzongkhag is moving in line with its Vision, "An economically vibrant, culturally rich, organic Dzongkhag with peaceful and knowledgeable society co-existing in perpetual harmony with the pristine environment".

Abbreviations

%:	Percent	Inst:	Institute
< :	Less than	Kg:	Kilogram
> :	Greater than	LFS:	Labor Force Survey
AIDS:	Acquired Immune Deficiency Syndrome	LSS:	Lower Secondary School
Avg:	Average	Max:	Maximum
BHU:	Basic Health Unit	Min:	Minimum
BLSS:	Bhutan Living Standard Survey	MSS:	Middle Secondary School
Cft:	Cubic Feet	n.a:	Not Available
CPS:	Community Primary school	N.A:	Not Applicable
DPTH:	Diphtheria Parthuisis Tetanus Hepatitis B	NFE:	Non Formal Education
DYT:	Dzongkhag Yargye Tsogdue	Nu:	Ngultrum
FYP:	Five Year Plan	ORC:	Outreach Clinic
GDP:	Gross Domestic Product	PAR:	Poverty Analysis Report
GIS:	(Infrastructure mapping): Geographical Infrastructure System	PHCB:	Population and Housing Census of Bhutan
Gm:	Gram	PP:	Pre Primary
GYT:	Gewog Yargye Tshogchung	PS:	Primary School
HIV:	Human Immune Virus	Pvt:	Private
Hr:	Hour	Qty:	Quantity
HSS:	Higher Secondary School	Sq.Km:	Square Kilometer
		SYB:	Statistical Year Book
		TV:	Television



Table 1. Population by Age-Group and Sex, Tsirang, (2005 ~ 2011)

Age-group	2005	2006	2007	2008	2009	2010	2011
Total	18,667	18,979	19,294	19,612	19,933	20,254	20,576
0-4	1,944	2,010	2,138	2,265	2,391	2,513	2,499
5-9	1,986	1,975	1,925	1,883	1,847	1,819	1,948
10-14	2,413	2,126	2,095	2,058	2,020	1,983	1,930
15-19	2,220	2,089	2,099	2,105	2,106	2,098	2,080
20-24	1,812	1,961	1,979	1,995	2,010	2,025	2,039
25-29	1,471	1,757	1,794	1,827	1,858	1,886	1,911
30-34	1,098	1,461	1,512	1,566	1,618	1,666	1,710
35-39	1,041	1,221	1,254	1,289	1,327	1,370	1,418
40-44	915	992	1,028	1,066	1,105	1,143	1,180
45-49	890	817	839	862	889	918	952
50-54	726	674	692	712	732	753	775
55-59	602	553	565	579	594	611	628
60-64	520	446	455	466	476	488	500
65+	1,029	899	919	938	960	982	1,006
Male	9,517	9,660	9,807	9,956	10,107	10,261	10,413
0-4	1,014	979	1,042	1,105	1,167	1,228	1,221
5-9	1,009	967	941	919	901	887	951
10-14	1,187	1,049	1,032	1,013	993	973	946
15-19	1,103	1,046	1,046	1,046	1,043	1,037	1,026
20-24	955	1,013	1,015	1,016	1,017	1,019	1,021
25-29	749	923	940	956	969	979	987
30-34	571	777	802	828	853	877	898
35-39	519	651	669	687	707	729	754
40-44	397	522	543	565	587	609	629
45-49	451	426	437	450	464	481	500
50-54	369	349	359	369	380	391	403
55-59	338	285	291	299	306	315	324
60-64	283	228	233	238	243	249	256
65+	572	447	456	465	475	486	497

Female	9,150	9,318	9,487	9,656	9,825	9,993	10,162
0-4	930	1,031	1,096	1,160	1,224	1,285	1,278
5-9	977	1,008	984	963	946	932	997
10-14	1,226	1,076	1,063	1,046	1,028	1,009	984
15-19	1,117	1,043	1,052	1,059	1,062	1,060	1,054
20-24	857	948	964	979	993	1,006	1,018
25-29	722	834	853	871	889	906	924
30-34	527	685	711	738	764	789	811
35-39	522	570	585	601	619	640	664
40-44	518	470	485	502	518	535	551
45-49	439	391	402	412	424	437	452
50-54	357	324	333	342	352	362	373
55-59	264	268	274	281	288	296	304
60-64	237	218	223	228	233	239	245
65+	457	453	463	473	485	496	509

Note: Figures for the year 2006 onwards are based on the projected population Source: Population & Housing Census of Bhutan, 2005

Table 2. Population, Density and Sex Ratio, Tsirang, (2005 ~ 2011)

Details	2005	2006	2007	2008	2009	2010	2011
Population (Number)	18,667	18,979	19,294	19,612	19,933	20,254	20,576
Population density (Persons per Sq. Km)	29	30	30	31	31	32	32
Population sex ratio	100	100	100	100	100	100	100

Source : Dzongkhag Population Projection 2006-2015

Table 3. Total Number of Live Births, Deaths, Marriage certificate and Divorces, Tsirang, (2008 ~ 2011)

Age-group	2008	2009	2010	2011
Live births	348	296	297	n.a
Male	174	151	149	n.a
Female	174	145	148	n.n
Total deaths	58	40	56	n.a
Male	29	20	28	n.a
Female	21	11	19	n.a
Infant deaths	5	3	1	n.a
Male	2	2	-	n.a
Female	3	1	1	n.a
Marriages	199	436	374	138
Male	n.a	na	na	n.a
Female	n.a	na	na	n.a
Divorces	n.a	101	215	n.a
Male	n.a	n.a	n.a	n.a
Female	n.a	n.a	n.a	n.a

Source: Dzongkhag Health Sector & Dzongkhag Court, Tsirang Dzongkhag

Table 4. Adolescent Birth rate and Total fertility rate, Tsirang, (2010)

Details	2010
Adolescent birth rate (age specific fertility rate for women age 15-19)	60.0
Total fertility rate	2.1

Source : BMIS, 2010

Table 5. Early Childbearing, Tsirang, (2010)

Percentage of women age 15-19 who have had livebirth or who are pregnant with the first child; percentage of women age 15-19 who have begun childbearing before age 15, and the percentage of women age 20~24 who have had a live birth before age 18.

Details	2010
% of women age 15~19	
Have had a live birth	8.9
Are pregnant with first child	4.5
Have begun childbearing	13.4
Have had a live birth before 15	0
Number of women age 15~19	89.0
% of women age 20~24 who have had a live birth before age 18	17.2
Number of women age 20~24	80.0

Source : BMIS, 2010

Table 6. Use of Contraception, Tsirang, (2010)

Percentage of Women age 15~49 Years Currently Married or in Union Who are using (or whose partner is using) a Contraceptive Method.

Details	2010
Not using any method	27.2
Percent of women (currently married or in union) who are using	
Female sterilization	3.7
Male sterilization	13.8
IUD	2.4
Injectables	36.9
Implants	0.2
Oral contraceptive Pill	13.3
Male condom	2.4
Female condom	0.0
Foam/ jelly	0.0
Lactational amenorrhoea method (LAM)	0.0
Periodic abstinence/ rhythm	0.1
Withdrawal	0.0
Other	0.0
Any modern method	72.6
Any traditional method	0.1
Any method	72.8
Number of women currently married or in union	333.0

Source : BMIS, 2010

Table 7. Antenatal Care Provider, Tsirang, (2010)

Percent Distribution of Women Aged 15~49 Who Gave Birth in The Survey by Type of Personnel Providing Antenatal Care.

Details	2010
Persons providing antenatal care	
Doctor	4.2
Nurse/ midwife	58.3
HA/ BHW	35.1
Assistant clinical officer (ACO)	1.7
Traditional birth attendant	0.0
Village health worker	0.0
Other/ missing	0.0
No antenatal care received	0.7
Total	100.0
At Least once by skilled personnel	99.3
Number of women who gave birth in the preceding 2 years	62.0

Source : BMIS, 2010

Table 8. Number of Antenatal Care Visits, Tsirang, (2010)

Percentage of Women Who had a Live Births During the Two Years Preceding the Survey by Number of Antenatal Care Visits by Any Provider.

Details	2010
Percent of women who had	
No antenatal care visits	0.7
1 Visits	2.0
2 Visits	3.3
3 Visits	12.5
4 or more visits	79.8
Missing/ DK	1.8
Total	100.0
Number of women who gave birth in the preceding 2 years	62.0

Source : BMIS, 2010

Table 9. Assistance During Delivery, Tsirang, (2010)

Percent Distribution of Women age 15-49 Who had a Live Birth in the Two Years Preceding the Survey by Person Assisting, at Delivery and Percentage of Births Delivered by C-section.

Details	2010
Person assisting at delivery	
Doctor	18.5
Nurse / Midwife	31.6
HA/BHW	20.3
Asst. clinical officer (ACO)	2.7
Traditional birth attendant	0.0
Village health worker	0.0
Relative / friend	26.8
Other/missing	0.0
No attendant	0.0
Total	100.0
Any skilled personnel	73.2
Percent delivered by C-section	5.8
Number of women who gave birth in preceding two years	62.0

Source : BMIS, 2010

Table 10. Place of Delivery, Tsirang, (2010)

Percent Distribution of Women age 15-49 With a Birth in Two Years Preceding the Survey by Place of Delivery.

Details	2010
Place of delivery	
Public sector health facility	73.1
Private sector health facility	0.0
Home	26.9
Other	0.0
Total	100.0
Delivered in health facility [1]	73.1
Number of women who gave birth in preceding two years	62.0

Source : BMIS, 2010

Table 11. Health Infrastructures, Facilities and Personnel, Tsirang, (2007 ~ 2010)

Details	2007	2008	2009	2010
Number of hospitals	1	1	1	1
Number of BHUs	4	4	4	4
BHU grade I	0	0	0	0
BHU grade II	4	4	5	5
Number of ORCs	17	17	16	16
Number of indigenous units	1	1	1	1
Number of doctors	1	1	1	1
Number of hospital/BHU beds	20	20	20	20
Persons per doctor	17,949	18,460	18,207	18,462
Persons per hospital bed	3	3	3	3
Total morbidity attendance	0	0	0	0
Health assistants	5	5	8	8
Basic health workers	5	5	4	4
Sister and nurses	n.a	n.a	8	10
Technicians	n.a	n.a	7	13
Indigenous dungtsho	1	1	1	1
Indigenous compounders/Menpas	1	1	1	1
Malaria workers	2	2	2	2
Village health workers	39	39	39	39
Number of children immunized				
Polio	442	377	373	333
DPTH	442	377	373	329
Measles	666	382	403	330
BCG	326	291	288	291
Others	n.a	n.a	n.a	344

Source: Dzongkhag Health Sector, Tsirang Dzongkhag

Table 12. Hospital Admission and Average Length of Stay, Tsirang, (2007 ~ 2010)

Average admission	2007	2008	2009	2010
Hospital admission				
Total	n.a	n.a	873	1021
Patient days	n.a	n.a	2,434	2016
Average days	n.a	n.a	2.8	2
BHU admission	n.a	n.a	155	255

Source : Annual Health Bulletin, MoH

Table 13. Number of Surgeries, Tsirang, (2007 ~ 2010)

Details	2007	2008	2009	2010
Surgeries				
Caesarian Section	n.a	n.a	0	0
General Abdominal	n.a	n.a	0	0
General Others	n.a	n.a	0	0
Orthopaedic extremities	n.a	n.a	0	0
Orthopaedic Others	n.a	n.a	0	0
Gynaecology	n.a	n.a	0	0
ENT	n.a	n.a	0	0
Eye	n.a	n.a	0	0

Source : Annual Health Bulletin, MoH

Table 14. Number of Dental Services, Tsirang, (2007 ~ 2010)

Dental Services	2007	2008	2009	2010
Prophylaxis	68	47	37	101
Scaling	4	4	2	0
Fillings	347	1393	956	596
Extractions	645	625	660	663
Others	871	1073	1,093	1,045

Source : Annual Health Bulletin, MoH

Table 15: Number of Top Ten Morbidity, Tsirang, (2007~ 2010)

Priority health problem/ Disease	2007	2008	2009	2010
Diarrhoea	2,203	3,685	1,202	1,194
Conjunctivitis	1,618	2,051	1,888	1,963
Dysentery	950	1,489	n.a	259
Typhoid	101	249	n.a	7
Sexually transmitted disease, excluding HIV/AIDS	18	26	n.a	27
Diabetes	388	599	n.a	n.a
Tuberculosis	16	3	6	11
Early syphilis	1	0	0	0
Cholera	0	0	0	0
Tetanus	0	0	0	0
Diphtheria	0	0	0	0
Pertussis	0	0	0	0

Source : Dzongkhag Health Sector, Tsirang Dzongkhag

Table 16. Child Disability, Tsirang, (2010)

Child Disability	2010
Percentage of children aged 2-9 years with reported disability by type of disability	
Delay in sitting standing or walking	2.0
Difficulty seeing, either in the daytime or at night	1.4
Appears to have difficulty hearing	1.5
No understanding of instructions	1.9
Difficulty in walking moving, moving arms, weakness or stiffness	2.5
Have fits, become rigid, lose consciousness	2.5
Not learning to do things like other children his/her age	5.5
No speaking cannot be understood in words	4.1
Appears mentally backward, dull, or slow	3.8
Speech is not normal	6.9
Number of children aged 3-9 years	304.0
Cannot name at least one object	34.4
Number of children aged 2 years	48.0
Percentage of children 2-9 years of age with at least one reported disability*	23.7
Number of children aged 2-9 years	352.0

Source: BMIS, 2010

Table 17. Nutritional Status of Children, Tsirang, (2010)

Percentage of children under age 5 by nutritional status according to three anthropometric indices: weight for age, height for age, and weight for height.

Nutritional Status		2010
Weight for age:	% below -2 sd [1]	12.9
Weight for age:	% below -3 sd [2]	3.3
Weight for age:	Mean Z-Score (SD)	0.9
Weight for age:	Number of children	178.0
Height for age:	% below -2 sd [3]	28.4
Height for age:	% below -3 sd [4]	7.2
Height for age:	Mean Z-Score (SD)	-1.3
Height for age:	Number of children	175.0
Weight for height:	% below -2 sd [5]	5.3
Weight for height:	% below -3 sd [6]	2.3
Weight for height:	% above +2 sd	3.1
Weight for height:	Mean Z-Score (SD)	-0.2
Weight for height:	Number of children	181.0

Source: BMIS, 2010

Table 18. Initial Breastfeeding, Tsirang, (2010)

Percentage of Last-Born Children in the 2 Years Preceding the Survey Who Were Ever Breastfed, Percentage Who Were Breastfed Within One Hour of Birth and Within One Day of Birth, and Percentage Who Received a Prolacteal Feed.

Initial Breastfeeding	2010
Percentage ever breastfed	100
Percentage who were first breastfed: Within one hour of birth	71.4
Percentage who were first breastfed: Within one day of birth	94.7
Percentage who received a prolacteal feed	4.1
Number of last-born children in the two years preceding the survey	62

Source: BMIS, 2010

Table 19. Duration of Breastfeeding, Tsirang, (2010)

Median duration of any breastfeeding, exclusive breastfeeding, and predominant breastfeeding among children age 0-35 months.

Duration of Breastfeeding	2010
Median duration (in months) of	
Any breastfeeding	31.1
Exclusive breastfeeding	1.6
Predominant breastfeeding	5
Number of children age 0-35 months	116

Source: BMIS, 2010

Table 20. Low Birth Weight Infants, Tsirang, (2010)

Percentage of Last-Born Children in the 2 Years Preceding the Survey That are Estimated to Have Weighed Below 2500 Grams at Birth and Percentage of Live Births Weighed at Birth.

Low Birth Weight Infants	2010
Percent of live births	
Below 2500 grams	10.2
Weighed at birth	91.3
Number of live births in the last 2 years	62

Source: BMIS, 2010

Table 21. Neonatal Tetanus Protection, Tsirang, (2010)

Percentage of women age 15-49 years with a live birth in the last 2 years protected against neonatal tetanus.

Neonatal Tetanus Protection	2010
Percentage of Women Who Received at Least 2 Doses During Last Pregnancy	
Percentage of women who did not receive two or more doses during last pregnancy but received	63.2
2 doses, the last within prior 3 years	3.8
3 doses, the last within prior 5 years	0
4 doses, the last within prior 10 years	0
5 or more doses during lifetime	0
Protected against tetanus [1]	67
Number of women with a live birth in the last 2 years	62

Source: BMIS, 2010

Table 22. Solid Fuel Use, Tsirang, (2010)

Percentage Distribution of Household Members According to Type of Cooking Fuel Used by the Household, and Percentage of Household Members Living in Households Using Solid Fuels for Cooking.

Solid Fuel Use	2010
Percentage of household members in households using	
Electricity	6.3
Liquefied Petroleum Gas (LPG)	15.4
Kerosene	0
Coal	1.4
Wood	76.9
Straw/Shrubs/Grass	0
No food cooked in household	0
Other	0
Total	100
Solid fuels for cooking	78.3
Number of household members	2208

Source: BMIS, 2010

Table 23. Use of Improved Water Sources, Tsirang, (2010)

Percent distribution of household population according to main source of drinking water and percentage of household population using improved drinking water sources.

Water Sources	2010
Main source of drinking water	
Improved sources	
Piped into dwelling	10.9
Piped into compound	80.4
Piped to neighbor	4.2
Public outdoor tap	0.2
Protected well	0
Spring	0
Rainwater collection	0
Bottled water	0
Unimproved sources	
Unprotected well	0.1
Unprotected spring	1.7
Tanker-truck	0
Cart with samll tank/drum	0.2
Surface water (river,stream, dam, lake,pond,canal,irrigation channel)	2
Other	0.1
Total	100
Percentage using improved sources of drinking water	95.8
Number of household members	2208

Source: BMIS, 2010

Table 24. Household Water Treatment, Tsirang, (2010)

Percentage of Household Population by Drinking Water Treatment Method Used in the Household, and for Household Members Living in Households Where an Unimproved Drinking Water Source is Used, the Percentage Who are Using an Appropriate Treatment Method

Water Treatment	2010
Water treatment method used in the household	
None	5.5
Boil	93.5
Add bleach / chlorine	0
Strain through a cloth	0.2
Use water filter	9.2
Solar disinfection	0
Let it stand and settle	0.6
Other	0
Don't know	0
Number of household members	2208
Percentage of household members in households using unimproved drinking water sources and using an appropriate water treatment method [1]	86.1
Number of household members in households using unimproved drinking water sources	93

Source: BMIS, 2010

Table 25. Time to Source of Drinking Water, Tsirang, (2010)

Percent Distribution of Household Population According to Time to go to Source of Drinking Water, Get Water and Return, for Users of Improved and Unimproved Drinking Water Sources

Time to Source of Drinking Water	2010
Time to source of drinking water	
Users of improved drinking water sources	
Water on premises	95.6
Less than 30 minutes	0.1
30 minutes or more	0
Missing/DK	0.1
Users of unimproved drinking water sources	
Water on premises	1.9
Less than 30 minutes	1.3
0 minutes or more	1
Missing/DK	0
Total	100
Number of household members	2208

Source: BMIS, 2010

Table 26. Types of Sanitation Facilities, Tsirang, (2010)

Percent Distribution of Household Population According to Type of Toilet Facility Used by the Household

Types of sanitation facilities	2010
Type of toilet facility used by household	
Improved sanitation facility	
Flush toilet	0.1
Flush to septic tank(Without soak pit)	19.6
Flush to pit (latrine)	41.7
Flush to unknown place/not sure/DK where	0
Flush to septic tank (with soak pit)	3.9
Ventilated Improved Pit latrine (VIP)	0
Pit latrine with slab	1.9
Composing toilet	0.1
Unimproved sanitation facility	
Flush to somewhere else	0.1
Pit latrine without slab /open pit	28.7
Long drop latrine	0
Bucket	0
Other	0
Missing	0.1
Open defecation (no facility, bush, field)	
No facility,bush, field	3.7
Total	100
Number of household members	2,208

Source: BMIS, 2010

Table 27. Number of Schools, Institutions, Teachers and Students, Tsirang, (2008 ~ 2011)

Details	CPS	PS	LSS	MSS	HSS	College	Pvt.	Other Inst. Centres	NFE Daycare Centres	Total
2008										
Number of schools and institutions	7	3	2	1	1	0	0	0	36	0
Teaching staff							N.A			
Bhutanese	134	n.a	n.a	n.a	n.a	N.A	N.A	N.A	n.a	n.a
Male	80	n.a	n.a	n.a	n.a	N.A	N.A	N.A	n.a	n.a
Female	54	n.a	n.a	n.a	n.a	N.A	N.A	N.A	n.a	n.a
Non-Bhutanese										
Male	n.a	n.a	n.a	n.a	n.a	N.A	N.A	N.A	n.a	n.a
Female	n.a	n.a	n.a	n.a	n.a	N.A	N.A	N.A	n.a	n.a
Temporary teachers										
Male	n.a	n.a	n.a	n.a	n.a	N.A	N.A	N.A	n.a	n.a
Female	n.a	n.a	n.a	n.a	n.a	N.A	N.A	N.A	n.a	n.a
Number of students										
Male	n.a	n.a	n.a	n.a	n.a	N.A	N.A	N.A	n.a	n.a
Female	n.a	n.a	n.a	n.a	n.a	N.A	N.A	N.A	n.a	n.a
Student to teacher ratio										
	n.a	n.a	n.a	n.a	n.a	N.A	N.A	N.A	n.a	n.a
2009										
Number of schools and institutions	7	3	2	1	1	0	0	0	37	1
Teaching staff										
Bhutanese	176	28	n.a	n.a	n.a	N.A	N.A	N.A	n.a	n.a
Male	108	20	n.a	n.a	n.a	N.A	N.A	N.A	n.a	n.a
Female	68	8	n.a	n.a	n.a	N.A	N.A	N.A	n.a	n.a

Non-Bhutanese	8	0	n.a	n.a	n.a	n.a	n.a	N.A	N.A	n.a	n.a	n.a
Male	7	0	n.a	31	21	N.A	N.A	N.A	N.A	n.a	n.a	n.a
Female	1	0	n.a	29	9	N.A	N.A	N.A	N.A	n.a	n.a	n.a
Temporary teachers												
Male	n.a	n.a	n.a	n.a	n.a	N.A	N.A	N.A	N.A	n.a	n.a	n.a
Female	n.a	n.a	n.a	n.a	n.a	N.A	N.A	N.A	N.A	n.a	n.a	n.a
Number of students	4,900	n.a	n.a	n.a	n.a	N.A	N.A	N.A	N.A	n.a	n.a	n.a
Male	2,463	n.a	n.a	n.a	n.a	N.A	N.A	N.A	N.A	n.a	n.a	n.a
Female	2,437	n.a	n.a	n.a	n.a	N.A	N.A	N.A	N.A	n.a	n.a	n.a
Student to teacher ratio	n.a	n.a	n.a	n.a	n.a	N.A	N.A	N.A	N.A	n.a	n.a	n.a
2010												
Number of schools and institutions	7	4	2	1	1	0	0	0	0	n.a	n.a	1
Teaching staff												
Bhutanese	41	29	60	28	31	N.A	N.A	N.A	N.A	n.a	n.a	n.a
Male	23	21	30	18	21	N.A	N.A	N.A	N.A	n.a	n.a	n.a
Female	18	8	30	10	10	N.A	N.A	N.A	N.A	n.a	n.a	n.a
Non-Bhutanese												
Male	n.a	n.a	n.a	7	n.a	N.A	N.A	N.A	N.A	n.a	n.a	n.a
Female	n.a	n.a	n.a	2	n.a	N.A	N.A	N.A	N.A	n.a	n.a	n.a
Temporary teachers												
Male	n.a	n.a	n.a	n.a	n.a	N.A	N.A	N.A	N.A	n.a	n.a	n.a
Female	n.a	n.a	n.a	n.a	n.a	N.A	N.A	N.A	N.A	n.a	n.a	n.a
Number of students	5,492	n.a	n.a	n.a	n.a	N.A	N.A	N.A	N.A	n.a	n.a	n.a
Male	2,851	n.a	n.a	n.a	n.a	N.A	N.A	N.A	N.A	n.a	n.a	n.a
Female	2,640	n.a	n.a	n.a	n.a	N.A	N.A	N.A	N.A	n.a	n.a	n.a
Student to teacher ratio	n.a	n.a	n.a	n.a	n.a	N.A	N.A	N.A	N.A	n.a	n.a	n.a

Table 28. School Enrolment by Grade and Sex, Tsirang, (2008~2011)

Class	2008	2009	2010	2011
Primary level				
Total	3231	3547	3716	3884
Class PP	423	616	600	527
Class I	461	486	609	609
Class II	561	485	525	628
Class III	475	583	510	576
Class IV	483	476	571	563
Class V	464	453	489	527
Class VI	364	448	412	454
Male				
Class PP	193	320	358	268
Class I	207	245	571	326
Class II	285	248	477	330
Class III	237	306	562	293
Class IV	251	242	571	288
Class V	222	224	489	285
Class VI	182	224	412	221
Female				
Class PP	210	296	471	259
Class I	216	241	369	283
Class II	244	237	386	298
Class III	238	247	290	283
Class IV	247	234	119	275
Class V	233	229	156	242
Class VI	182	224	na	233
Secondary level				
Total	1563	1708	1755	2,008
Class VII	388	448	471	487
Class VIII	355	388	369	454
Class IX	320	355	394	404
Class X	243	320	290	414
Class XI	126	243	118	124
Class XII	131	131	113	125

Male				
Class VII	na	197	233	261
Class VIII	na	167	187	227
Class IX	na	170	181	201
Class X	na	120	146	193
Class XI	na	84	68	88
Class XII	na	88	100	72
Female				
Class VII	na	191	238	226
Class VIII	na	188	182	227
Class IX	na	170	205	203
Class X	na	115	144	221
Class XI	na	42	51	36
Class XII	na	43	56	53

Source: Dzongkhag Education Sector, Tsirang Dzongkhag

Table 29. Student by Age-Group, Sex and by Level, Tsirang, (2008~2011)

Details	2008	2009	2010	2011
Students in primary school level (Class PP-VI)				
Total				
Age < 6 years	na	na	4	n.a
Age 6-12 years	na	na	2727	n.a
Age 13 & above	na	na	966	n.a
Male				
Age < 6 years	na	na	2	n.a
Age 6-12 years	na	na	1403	n.a
Age 13 & above	na	na	496	n.a
Female				
Age < 6 years	na	na	2	n.a
Age 6-12 years	na	na	1352	n.a
Age 13 & above	na	na	466	n.a
Student in LSS level (Class VII-VIII)				
Total				
Age < 13 years	na	na	40	n.a
Age 13-14 years	na	na	108	n.a
Age 15 & above	na	na	515	n.a
Male				
Age < 13 years	na	na	2	n.a
Age 13-14 years	na	na	28	n.a
Age 15 & above	na	na	235	n.a
Female				
Age < 13 years	na	na	0	n.a
Age 13-14 years	na	na	19	n.a
Age 15 & above	na	na	248	n.a
Students in MSS level (Class IX-X)				
Total				
Age < 15 years	na	na	15	n.a
Age 15-16 years	na	na	125	n.a
Age 17 & above	na	na	544	n.a
Male				
Age < 15 years	na	na	1	n.a
Age 15-16 years	na	na	6	n.a
Age 17 & above	na	na	221	n.a

Female				
Age < 15 years	na	na	0	n.a
Age 15-16 years	na	na	16	n.a
Age 17 & above	na	na	247	n.a
Students in HSS level (Class XI-XII)				
Total				
Age < 17 years	na	na	7	n.a
Age 17-18 years	na	na	68	n.a
Age 19 & above	na	na	176	n.a
Male				
Age < 17 years	na	na	4	n.a
Age 17-18 years	na	na	32	n.a
Age 19 & above	na	na	119	n.a
Female				
Age < 17 years	na	na	3	n.a
Age 17-18 years	na	na	36	n.a
Age 19 & above	na	na	57	n.a

Source : Education Sector, Tsirang Dzongkhag

Table 30. Literacy Among Young Women, Tsirang, (2010)

Literacy Among Young Women	2010
Percentage literate	50.2
Percentage not known	0
Number of women age 15-24 years	169

Source: BMIS, 2010

Table 31. School Readiness, Tsirang, (2010)

Percentage of children attending first grade of primary school who attended pre-school the previous year.

School Readiness	2010
Percentage of children attending first grade who attended preschool in previous year	2.1
Number of children attending first grade of primary school	63

Source: BMIS, 2010

Table 32. Primary School Entry, Tsirang, (2010)

Percentage of Children of Primary School Entry Age Entering Grade 1 (net intake rate)

Primary School Entry	2010
Percentage of children of primary school entry age entering grade 1	73.3
Number of children of primary school entry age	51

Source: BMIS, 2010

Table 33. Children Reaching Last Grade of Primary School, Tsirang, (2010)

Percentage of children entering first grade of primary school who eventually reach the last grade of primary school (Survival rate to last grade of primary school)

Details	2010
Percent attending grade 1 last year who are in grade 2 this year	99.1
Percent attending grade 2 last year who are attending grade 3 this year	97
Percent attending grade 3 last year who are attending grade 4 this year	100
Percent attending grade 4 last year who are attending grade 5 this year	100
Percent attending grade 5 last year who are attending grade 6 this year	100
Percent who reach grade 6 of those who enter grade 0	95.9

Source: BMIS, 2010

Table 34. Education Gender Parity, Tsirang, (2010)

Education gender parity Ratio of adjusted net attendance ratios of girls to boys, in primary and secondary school

Education Gender Parity	2010
Primary school adjusted net attendance ratio (NAR), girls	92.1
Primary school adjusted net attendance ratio (NAR), boys	92.9
Gender parity index (GPI) for primary school adjusted NAR	0.99
Secondary school adjusted net attendance ratio (NAR), girls	49.1
Secondary school adjusted net attendance ratio (NAR), boys	48.8
Gender parity index (GPI) for secondary school adjusted NAR	1.01

Source: BMIS, 2010

Table 35. Summary of Crime Reports by Nature of Crime, Tsirang, (2009 ~ 2011)
(Incident)

Nature of Crime	2009	2010	2011
Attempt, aiding and abetting, solicitation and criminal conspiracy	1	1	1
Homicide	n.a	n.a	n.a
Assault,battery and related offences	23	48	22
Kidnapping and related offences	n.a	n.a	n.a
Sexual offence	n.a	n.a	n.a
Offence against infant,child,mentally dissabled and incompetent person	2	4	4
Arson and related offences	n.a	n.a	n.a
Burglary, trespass and related offences	1	8	6
Larceny,robbery, armed robbery and related offences	7	7	2
Money laundering and smuggling	0	0	0
Embezzlement and bribery	n.a	n.a	n.a
Forgery and related offences	n.a	n.a	n.a
Defamation and related offences	2	0	0
Treason,terrorism and related offences	0	0	0
Offences against cultural and national heritage	2	0	0
Offences against judicial authority	0	0	0
Prostitution and related offences	0	0	0
Offences against the public welfare	6	3	0
Offences related to public and civic duties	0	0	2
Offences related to public order and tranquillity	1	5	7
Offences against privacy	0	0	0
Computer offences	0	0	0
Offences related to firearms and weapons	0	0	0
Offences related to protected species,controlled and other harmful substances	3	1	1
Motor vehicle offences	1	1	1
Others	0	0	0
Total crimes	49	78	46

Source: Royal Bhutan Police, Tsirang Dzongkhag

Table 36. Monthly Motor Vehicle Accidents, Tsirang, (2009~ 2011)

Month	2009	2010	2011
January	0	0	6
February	0	2	5
March	0	1	5
April	1	4	5
May	0	2	2
June	0	1	10
July	0	6	0
August	1	0	3
September	0	5	8
October	0	3	5
November	0	3	1
December	4	6	0
Total	6	33	50

Source: Royal Bhutan Police, Tsirang Dzongkhag

Table 37. Causes of Motor Vehicle Accidents, Tsirang, (2009~2011)

Details	2009	2010	2011
Mechanical fault	3	0	16
Drunk driving	0	9	7
Bad weather	0	9	8
Without licence	0	0	4
Unknown causes	0	0	0
Other causes	3	15	15
All causes	6	33	50

Source: Royal Bhutan Police, Tsirang Dzongkhag

Table 38. Attitudes Toward Domestic Violence, Tsirang, (2010)

Details	2010
Percentage of women age 15-49 years who believe a husband is justified in beating his wife/partner	
If goes out without telling him	66.8
If she neglects the children	73.5
If she argues with him	17.7
If she refuses sex with him	11.4
If she burns the food	6
For any of these reasons	77.3
Number of women age 15-49 years	463

Source: BMIS, 2010

Table 39. Land Area and Damages Caused by Types, Tsirang, (2007 ~ 2010)

Details	2007	2008	2009	2010
Dzongkhag area (Sq. Km)	638.80	638.80	638.80	638.80
Total cultivated land (Acres) ¹	n.a	n.a	n.a	11635.9
Damages caused by landslides ²				
Farmland (acres)				
Houses (Number)	n.a	n.a	1	1
Roads (Km)	n.a	n.a	n.a	n.a
Damages caused by floods ²				
Farmland (acres)	n.a	n.a	n.a	n.a
Houses (Number)	n.a	n.a	0	0
Roads (Km)	n.a	n.a	n.a	n.a
Crops affected by drought (acres)	n.a	n.a	n.a	n.a
Crops damaged by wild animals (acres)	n.a	n.a	n.a	n.a
Incidence of earthquake ²				
(Number of cases reported) ²	n.a	n.a	1	1
Houses damaged by earthquakes (Number)	n.a	n.a	n.a	26
Number of forest fires ³	n.a	n.a	5	2
Acreage destroyed by forest fires	n.a	n.a	1,917	1100
Acreage of reforestation ³	n.a	n.a	n.a	800
Houses/structures damaged by fires (Number) ³	n.a	n.a	4	2

Source: 1Agriculture Sector, 2Environment Sector, 3 Forest Sector, Tsirang Dzongkhag

Table 40. Average Monthly Temperature (Degree Centigrade), Tsirang, (2010)

Month/ Temperature	(Degree Celsius)		
	Maximum	Minimum	Average
January	16	6	11
February	16	6	11
March	20	12	16
April	22	16	19
May	23	17	20
June	23	19	21
July	23	20	22
August	24	20	22
September	23	19	21
October	22	16	19
November	19	12	15
December	17	7	12
Annual	21	14	17

Source: SYB, NSB

Table 41. Average Monthly Rainfall, Tsirang, (2010)

Month/ Monthly Rainfall	(Millimeter)
	Station
	Tsirang
January	0
February	3
March	18
April	54
May	81
June	522
July	697
August	249
September	155
October	58
November	2
December	0
Annual total rainfall	1838

Source: SYB, NSB

Table 42. Percentage of Forest Coverage, Number of Protected Spring and Lakes, Tsirang, (2010)

Details	2010
Forest coverage (%) ²	87.3
Number of snow fall at Dzongkhag headquater	N.A
Number of Protected spring water sources ¹	n.a
Number of Lakes ¹	n.a

Source: 1Dzongkhag Forest Section, 2Tenth Plan Documents, GNHC

Table 43. Disposal of Childs Faeces, Tsirang, (2010)

Percent distribution of children age 0-2 years according to place of disposal of child's faeces, and the percentage of children age 0-2 years whose stools were disposed of safely the last time the child passed stools

Disposal of Childs Faeces	2010
Place of disposal of child's faeces	
Child used toilet / latrine	4.7
Put / Rinsed into toilet or latrine	42.2
Put / Rinsed into drain or ditch	44.9
Thrown into garbage (solid waste)	4.5
Buried	0
Left in the open	3
Other	0.7
Total	100
Percentage of children whose stools were disposed of safely	46.9
Number of children age 0-2 years	116

Source: BMIS 2010

Table 44. Parliamentary and Local Government Representatives, Tsirang, (2008 & 2011)

Details	2008	2011
Local governance (Number)		
Parliamentarians	2	2
Male	2	2
Female	0	0
Gups	12	12
Male	12	12
Female	0	0
Total gewog tshogpas ¹	n.a	41
Male	n.a	39
Female	n.a	3
Total Mangmis ¹	12	12
Male	12	12
Female	0	0
DYT members ²	n.a	24
Male	n.a	23
Female	n.a	1
GYT members ¹	n.a	66
Male	n.a	62
Female	n.a	4
Polling stations ²	n.a	60
Eligible voters (18 years and above) ²	n.a	18,990
Male	n.a	9751
Female	n.a	9239
% of Voters turnout during election	n.a	60%
Male	n.a	32%
Female	n.a	28%
Total election staff in Dzongkhag	3	3
Male	3	2
Female	0	1

Source: 1Gewog Administration, 2Election Sector, Tsirang Dzongkhag. The above information are as of November, 2011.

Table 45. Parliamentary and Local Government Election Expenditures, Tsirang, (2008 & 2011)

Details	Amount (Nu)
2008	
Parliamentarians (Number)	
National council	n.a
National assembly	n.a
2011	
Local government	
Gup	n.a
Mangmi	n.a
Tsogpa	n.a

Source: Election Office, Tsirang Dzongkhag

Table 46. Government Finance Expenditures, Tsirang, (2009 ~ 2011)

Details Sectors	2009		2010		2011	
	Current	Capital	Current	Capital	Current	Capital
		Total		Total		Total
Civil	n.a	n.a	n.a	n.a	n.a	n.a
Agriculture	n.a	n.a	n.a	n.a	n.a	n.a
Livestock	n.a	n.a	n.a	n.a	n.a	n.a
Forestry	n.a	n.a	n.a	n.a	n.a	n.a
Education	n.a	n.a	n.a	n.a	n.a	n.a
Health	n.a	n.a	n.a	n.a	n.a	n.a
Urban Development & Housing	n.a	n.a	n.a	n.a	n.a	n.a
Roads	n.a	n.a	n.a	n.a	n.a	n.a
Bhutan post	n.a	n.a	n.a	n.a	n.a	n.a
Telecommunication	n.a	n.a	n.a	n.a	n.a	n.a
Power	n.a	n.a	n.a	n.a	n.a	n.a
Trade & industry	n.a	n.a	n.a	n.a	n.a	n.a
Total	n.a	n.a	n.a	n.a	n.a	n.a
Total plan outlay	n.a	n.a	n.a	n.a	n.a	n.a

Source: Dzongkhag Administration, Tsirang.

Table 47. Dzongkhag 9th and 10th Five Year Plan Outlays, Tsirang.

Sectors	9 FYP		10 FYP	
	Current	Capital	Current	Capital
Civil	n.a	n.a	n.a	65.665
Agriculture	n.a	n.a	n.a	88.832
Livestock	n.a	n.a	n.a	12.27
Forestry	n.a	n.a	n.a	15.39
Education	n.a	n.a	n.a	n.a
Health	n.a	n.a	n.a	90.571
Urban development & housing	n.a	n.a	n.a	45.269
Roads	n.a	n.a	n.a	n.a
Bhutan post	n.a	n.a	n.a	n.a
Telecommunication	n.a	n.a	n.a	n.a
Power	n.a	n.a	n.a	n.a
Trade & industry	n.a	n.a	n.a	n.a
Total	n.a	n.a	n.a	n.a
Total plan outlay	n.a	n.a	n.a	317.997

Source:Dzongkhag Administration, Tsirang.

Table 48. Dzongkhag 9th and 10th Five Year Plan Expenditure, Tsirang.

(in million Nu.)

Sectors	9 FYP		10FYP	
	Current	Capital	Current	Capital
Civil	n.a	n.a	n.a	n.a
Agriculture	n.a	n.a	n.a	n.a
Livestock	n.a	n.a	n.a	n.a
Forestry	n.a	n.a	n.a	n.a
Education	n.a	n.a	n.a	n.a
Health	n.a	n.a	n.a	n.a
Urban development & housing	n.a	n.a	n.a	n.a
Roads	n.a	n.a	n.a	n.a
Bhutan post	n.a	n.a	n.a	n.a
Telecommunication	n.a	n.a	n.a	n.a
Power	n.a	n.a	n.a	n.a
Trade & industry	n.a	n.a	n.a	n.a
Total	n.a	n.a	n.a	n.a
Total plan expenditure	n.a	n.a	n.a	n.a

Source:Dzongkhag Administration, Tsirang.

Table 49. Gewog 9th and 10th Five Year Plan Outlays, Tsirang.

(In million Nu.)

Sectors	9 FYP		10FYP	
	Current	Capital	Current	Capital
Civil	n.a	n.a	n.a	36.665
Agriculture	n.a	n.a	n.a	56.757
Livestock	n.a	n.a	n.a	5.216
Forestry	n.a	n.a	n.a	5.325
Education	n.a	n.a	n.a	
Health	n.a	n.a	n.a	11.135
Urban development & housing	n.a	n.a	n.a	n.a
Roads	n.a	n.a	n.a	n.a
Bhutan post	n.a	n.a	n.a	n.a
Telecommunication	n.a	n.a	n.a	n.a
Power	n.a	n.a	n.a	n.a
Trade & industry	n.a	n.a	n.a	n.a
Total	n.a	n.a	n.a	n.a
Total plan outlay	n.a	n.a	n.a	n.a

Source: Planning Unit, Tsirang Dzongkhag.

Table 50. Gewog 9th and 10th Five Year Plan by Expenditures, Tsirang.

(In million Nu.)

Sectors	9 FYP		10 FYP	
	Current	Capital	Current	Capital
Civil	n.a	n.a	n.a	n.a
Agriculture	n.a	n.a	n.a	n.a
Livestock	n.a	n.a	n.a	n.a
Forestry	n.a	n.a	n.a	n.a
Education	n.a	n.a	n.a	n.a
Health	n.a	n.a	n.a	n.a
Urban development & housing	n.a	n.a	n.a	n.a
Roads & bridges	n.a	n.a	n.a	n.a
Religion & cultural	n.a	n.a	n.a	n.a
Telecommunication	n.a	n.a	n.a	n.a
Power	n.a	n.a	n.a	n.a
Trade & Industry	n.a	n.a	n.a	n.a
Total	n.a	n.a	n.a	n.a
Total plan outlay	n.a	n.a	n.a	n.a

Source: Dzongkhag Administration, Tsirang.

Table 51. Employed Persons by Age, Sex and Area of Residence, Tsirang, (2008 ~ 2011)

Details	(Number)			
	2008	2009	2010	2011
Total	n.a	n.a	n.a	13700
Male	n.a	n.a	n.a	6800
Female	n.a	n.a	n.a	6900
Rural Total	n.a	n.a	n.a	800
Male	n.a	n.a	n.a	500
Female	n.a	n.a	n.a	300
Urban Total	n.a	n.a	n.a	12900
Male	n.a	n.a	n.a	6400
Female	n.a	n.a	n.a	6600

Source : Labour Force Survey, MoLHR

Table 52. Employment by Industries, Age Group and Sex, Tsirang, (2009 ~ 2011)

Details	2009	2010	2011
Total labour force (Number)	n.a	n.a	13,700
Total employed (%)	n.a	n.a	67
Male	n.a	n.a	6,800
Female	n.a	n.a	6,900
Unemployment rate	n.a	n.a	2
Total employed in Agriculture (%)	n.a	n.a	85
Male	n.a	n.a	5,600
Female	n.a	n.a	6,100
Total employed in Industries (%)	n.a	n.a	n.a
Male	n.a	n.a	n.a
Female	n.a	n.a	n.a
Total employed in Services (%)	n.a	n.a	n.a
Male	n.a	n.a	n.a
Female	n.a	n.a	n.a
Total unemployed by area (%)	n.a	n.a	n.a
Urban	n.a	n.a	n.a
Rural	n.a	n.a	n.a
Total un-employed by education (%)	n.a	n.a	n.a
Total unemployed grade XII and above	n.a	n.a	0
Total unemployed below grade XII	n.a	n.a	100
Total under employed (%)	n.a	n.a	n.a
Employed by age-group (%)	n.a	n.a	n.a
15-17 years	n.a	n.a	n.a
18-24 years	n.a	n.a	n.a
25-64 years	n.a	n.a	n.a
65 years and above	n.a	n.a	n.a
Unemployed by age-group (%)	n.a	n.a	n.a
15-17 years	n.a	n.a	n.a
18-24 years	n.a	n.a	n.a
25-64 years	n.a	n.a	n.a
65 years and above	n.a	n.a	n.a
Labor force participation rate (%)	n.a	n.a	98
Male participation rate	n.a	n.a	80
Female participation rate	n.a	n.a	84

Source : Labour Force Survey, MoLHR

Table 53. Child Labour, Tsirang, (2010)

Percentage of Children by Involvement in Economic Activity and Household Chores During the Past Week, According to Age Groups, and Percentage of Children Age 5-14 Involved in Child Labour

Child labour	2010
Percentage of children age 5-11 involved in	
Economic activity	
Working outside household	
Paid work	0.6
Unpaid work	1.1
Working for family business	32.2
Economic activity for at least one hour	33.3
Household chores less than 28 hours	47.7
Household chores for 28 hours or more	0
Child labour	
Number of children age 5-11	
Percentage of children age 12-14 involved in	
Economic activity	
Working outside household	
Paid work	1.9
Unpaid work	2.3
Working for family business	46.5
Economic activity less than 14 hours	44.7
Economic activity for 14 hours or more	4.1
Household chores less than 28 hours	66.3
Household chores for 28 hours or more	0.8
Child labour	
Number of children age 12-14	131
Total child labour [1]	25.2
Number of children age 5-14 years	464

Source: BMIS,2010

Table 54. Child Labour and School Attendance, Tsirang, (2010)

Percentage of children age 5-14 years involved in child labour who are attending school, and percentage of children age 5-14 years attending school who are involved in child labour

Child Labour and School Attendance	2010
Percentage of children involved in child labour	25.2
Percentage of children attending school	83.3
Number of children age 5-14 years	464
Percentage of child labourers who are attending school	87.9
Number of children age 5-14 years involved in child labour	117
Percentage of children attending school who are involved in child labour	26.7
Number of children age 5-14 years attending school	386

Source: BMIS,2010

Table 55. Agriculture Production and Average Prices by COmmodities, Tsirang, (2007 ~ 2010)

Details	2007	2008	2009	2010
Paddy				
Area (Acres)	4,976	3,229	3,607.50	n.a
Production (MT)	4602	2631	5,708	n.a
Price per Kg(Nu.)	n.a	n.a	n.a	n.a
Maize				
Area (Acres)	6428	n.a	5464.8	n.a
Production (MT)	4607	n.a	5,734.15	n.a
Price per Kg(Nu.)	n.a	n.a	n.a	n.a
Wheat				
Area (Acres)	315	n.a	132.5	n.a
Production (MT)	90	n.a	86	n.a
Price per Kg(Nu.)				
Barley				
Area (Acres)	n.a	334	17.92	n.a
Production (MT)	n.a	1417.17	16.35	n.a
Price per Kg(Nu.)				
Buckwheat				
Area (Acres)	524	n.a	245	n.a
Production (MT)	158	n.a	175	n.a
Price per Kg(Nu.)	n.a	n.a	n.a	n.a
Millet				
Area (Acres)	1752	na	700.8	n.a
Production (MT)	547	na	390.59	n.a
Price per Kg(Nu.)	n.a	n.a	n.a	n.a
Fruits				
Apples				
Number of fruit bearing trees	n.a	n.a	0	n.a
Production (Kg)	n.a	n.a	3.8	n.a
Price per Kg(Nu.)	n.a	n.a	n.a	n.a
Oranges/ Mandarin				
Number of fruit bearing trees	111288	124902	1,19,000	n.a
Production (Kg)	13062	7803	6059.3	n.a
Price per Kg(Nu.)	n.a	n.a	n.a	n.a
Banana				
Number of fruit bearing trees	27504	n.a	n.a	n.a
Production (Kg)	513	n.a	n.a	n.a
Price per Dozen(Nu.)	n.a	n.a	n.a	n.a

Pear				
Number of fruit bearing trees	5095	n.a	3,000	n.a
Production (Kg)	224	n.a	240.1	n.a
Price per Kg(Nu.)	n.a	n.a	n.a	n.a
Plum				
Number of fruit bearing trees	n.a	n.a	1000	n.a
Production (Kg)	2965	n.a	65.5	n.a
Price per Kg(Nu.)	146	n.a	n.a	n.a
Areca Nut				
Production (Pon)	n.a	n.a	0	n.a
Production (Nu.)	n.a	n.a	0	n.a
Price per 80 Piece/ Pon(Nu.)				
Vegetables and Spices				
Potato				
Production (kg)	237	n.a	1,381.67	n.a
Production (Nu.)	n.a	n.a	n.a	n.a
Price per Kg(Nu.)				
Chili				
Production (kg)	373	n.a	320.29	n.a
Production (Nu.)	n.a	n.a	n.a	n.a
Price per Kg(Nu.)				
Onion				
Production (kg)	n.a	n.a	98.59	n.a
Production (Nu.)	n.a	n.a	n.a	n.a
Price per Kg(Nu.)				
Cabbage				
Production (kg)	161	n.a	45.78	n.a
Production (Nu.)	n.a	n.a	n.a	n.a
Price per Kg(Nu.)				
Cauliflower				
Production (kg)	91	n.a	23.26	n.a
Production (Nu.)	n.a	n.a	n.a	n.a
Price per Kg(Nu.)				
Asparagus				
Production (Bundles)	12	n.a	3.53	n.a
Production (Nu.)	n.a	n.a	n.a	n.a
Price per bunddle (Nu.)				
Tomato				
Production (Kg)	48	na	69.52	n.a
Production (Nu.)	n.a	n.a	n.a	n.a

Price per Kg(Nu.)				
Carrot				
Production (Kg)	34	na	12.79	n.a
Production (Nu.)	n.a	n.a	n.a	n.a
Price per Kg(Nu.)				
Egg Plant (Brinjal)				
Production (Kg)	24	n.a	n.a	n.a
Production (Nu.)	n.a	n.a	n.a	n.a
Price per Kg(Nu.)				
Raddish				
Production (Kg)	552	na	337.98	n.a
Production (Nu.)	n.a	n.a	n.a	n.a
Price per Kg(Nu.)				
Ginger				
Production (Kg)	458	na	170.87	n.a
Production (Nu.)	n.a	n.a	n.a	n.a
Price per Kg(Nu.)				
Cardamom				
Production (Kg)	57	na	11.64	n.a
Production (Nu.)	n.a	n.a	n.a	n.a
Price per Kg(Nu.)				
Garlic				
Production (Kg)	37	n.a	57.67	n.a
Production (Nu.)	n.a	n.a	n.a	n.a
Price per Kg(Nu.)	n.a	n.a	n.a	n.a
Oil seeds and legumes				
Lentils				
Production (Kg)	251	n.a	n.a	n.a
Production (Nu.)	n.a	n.a	n.a	n.a
Price per Kg(Nu.)	n.a	n.a	n.a	n.a
Mustards				
Production (Kg)	253	n.a	246.85	n.a
Production (Nu.)	n.a	n.a	n.a	n.a
Price per Kg(Nu.)	n.a	n.a	n.a	n.a
Beans				
Production (Kg)	373	n.a	226.12	n.a
Production (Nu.)	n.a	n.a	n.a	n.a
Price per Kg(Nu.)	n.a	n.a	n.a	n.a

Source: Agriculture Sector, Tsirang Dzongkhag.

**Table 56. Agriculture Infrastructures and Other Facilities , Tsirang,
(2007 ~ 2010)**

Details	2007	2008	2009	2010
Irrigation for agriculture				
Number of irrigation channels	n.a	220	n.a	n.a
Functional	n.a	171	n.a	n.a
Non-Functional	n.a	49	n.a	n.a
Total length of channels (Km)		317.33	n.a	359.53
Area covered by irrigation (Acres)	n.a	4746	n.a	n.a
Number of households benefitted		4064	n.a	n.a
Number of food processing units	0	1	n.a	n.a
Number of agriculture mills ¹	54	55	n.a	n.a
Number of livestock product processing units	0	0	n.a	n.a
Number of farmer association/groups				
Agriculture	0	0	n.a	7
Livestock	0	0	n.a	8
Forestry	0	13	n.a	23
Number of power tillers	42	56	n.a	n.a

Note: ¹Including two traditional mills

Source: Agriculture Sector, Tsirang Dzongkhag.

Table 57: Livestock Population by Types, Tsirang, (2007~2010)

Details	2007	2008	2009	2010
Livestock (Number)				
Cattle				
Local breed	7,261	7,548	8,333	9,415
Male	3,852	3,968	4,328	n.a
Female	3,409	3,580	4,005	n.a
Improved breed	4,350	4,831	4,669	5,580
Male	1,360	1,530	1,434	n.a
Female	2,990	3,301	3,235	n.a
Mithun	77	96	43	n.a
Bufallo	184	261	245	n.a
Male	45	67	62	n.a
Female	139	194	183	n.a
Horse	212	238	231	n.a
Local breed	210	234	227	n.a
Improved breed	2	4	4	n.a
Yak	N.A	N.A	N.A	N.A
Male	N.A	N.A	N.A	N.a
Female	N.A	N.A	N.A	N.A
Sheep				
Local breed	723	693	663	n.a
Improved breed				
Pig	1,382	1,721	1,994	n.a
Local breed	988	1,207	1,546	n.a
Improved breed	394	514	448	n.a
Poultry	15,195	21,443	34,713	n.a
Local breed	9,589	12,391	10,256	n.a
Improved breed	5,606	9,052	24,457	n.a
Goat	4,936	5,644	5,711	n.a

Note: Mithun includes Bamin, Jatsa & Jatsam

Source: Livestock Sector, Tsirang Dzongkhag.

Table 58: Livestock Productions, Tsirang, (2007~2010)

Details	2007	2008	2009	2010
Livestock products				
Fresh Milk (Liters)	925,340	922,400	835,280	n.a
Butter (Kg)	25,780	31,950	31,000	n.a
Fresh Cheese (Kg)	208,760	303,100	120,160	n.a
Processed cheese (kg)	N.A	N.A	N.A	N.A
Eggs (Dozen)	160,691	73,173	98,633	n.a
Fish (Kg)	n.a	1,600	1,630	n.a
Beef (Kg)	30,770	51,200	45,400	n.a
Pork (Kg)	32,260	32,400	33,380	n.a
Yak Meat (Kg)	N.A	N.A	N.A	N.A
Mutton (Kg)	10,850	11,700	11,760	n.a
Honey (Gm)	n.a	n.a	n.a	n.a
Chicken (Kg)	47,250	34,460	16,580	n.a

Source: Livestock Sector, Tsirang Dzongkhag.

Table 59. Forestry Production, Tsirang, (2007 ~ 2010)

Details	2007	2008	2009	2010
Wood Forest Product ¹				
Log Form (Cft)	n.a	n.a	n.a	n.a
Fire wood (Cubic metres)	5,031.61	6,456.06	n.a	n.a
Flag Poles (Number)	119	745	n.a	n.a
Shinglap (Number of trees)	2	2	n.a	n.a
Cham (Number of trees)	1,774	2,492	430	n.a
Tsim (Number of trees)	2,145	2,122	5,135	n.a
Non-Wood Forest Product ²				
Mushroom (Kg)	n.a	60	n.a	n.a
Mushroom (Nu.)	n.a	n.a	n.a	n.a
Medicinal and Aromatic plants (Kg)	n.a	n.a	n.a	n.a
Cordyceps (Kg)	n.a	n.a	n.a	n.a
Cordyceps (Nu.)	n.a	n.a	n.a	n.a
Sand (Truck load)	654	430.5	589	n.a
Stones (Truck load)	765	912.5	1,012	n.a
Bamboo (Number)	5,394	1,955	4,625	n.a
Cane (Bundles)	4	27	171	n.a
Lemon grass (Kg)	n.a	n.a	n.a	n.a
Mining Sites (Number)	0	0	0	0
Quarry Sites	1	1	2	2
Municipal Waste Disposal Sites	1	1	1	1
Environmental Clearance Issued	3	8	27	8

Note: Cordyceps amount collected only for auction royalty charges.

Source: 1Divisional Forest, 2Thromsingla National Park, Tsirang.

Table 60. Electricity Generating Stations and Capacities, Tsirang, (2009 & 2010)

Stations	2009			2010		
	Installed capacity (no.x MW)	Generating capacity (MW)	Peak generation (MU)	Installed capacity (no.x MW)	Generating capacity (MW)	Peak generation (MU)
Chachay Micro Hydel	0.2x2	0.07	5	0.2	0.05	4
Diesel generation stations						
Bhutan Telecom, Damphu	n.a	n.a		n.a	n.a	n.a
Other diesel stations						

Source : Department of Energy, MoEA, Tsirang.

Table 61. Number of Households by Area, Tsirang, (2009 ~ 2011)

Details	2009	2010	2011
Total number of household in Urban	398	405	411
Total number of household in Rural	3500	3557	3613

Source: PHCB 2005, derived through ratio method

Table 62. Number of Building Permits issued by Towns, Tsirang, (2009 ~ 2011)

new buildings	2009	2010	2011
Damphu	1	0	0

Source: Dzongkhag Municipal office, Tsirang Dzongkhag.

Table 63. Number of Establishment by Type and Size, Tsirang, (2009 ~ 2011)

Details	2009	2010	2011
Industries by type (Number)			
Agro based	0	0	0
Forestry based	1	1	2
Mineral based	2	2	0
Others	0	0	1
Industries by scale (Number)			
Large	0	0	0
Medium	0	0	0
Small	4	4	4
Cottage	24	47	57
Contract firms (Number)			
Large	n.a	0	0
Medium	n.a	0	0
Small	n.a	10	13

Source: Regional Trade Office, Tsirang.

Table 64. Number of Wholesale, Retail Trade and Industrial Licenses Issued, Tsirang, (2007 ~ 2011)

Details	(Number)				
	2007	2008	2009	2010	2011
Trade and Industries					
Micro & retail trade licences issued	55	73	172	183	262
Micro & retail trade licences in operation	54	69	172	181	260
Wholesale trade licences issued	0	0	1	0	3
Wholesale trade licences in operation	0	0	1	0	3
Services licences issued	14	26	25	34	10
Services licences in operation	13	21	25	34	10
Manufacturing licenses issued	2	2	3	0	3
Manufacturing licenses in operation	2	2	3	0	3

Source: Regional Trade Office, Tsirang.

Table 65. Number of Public Transport and Facilities, Tsirang, (2007 ~ 2011)
(Number)

Details	2007	2008	2009	2010	2011
Public Service Transport					
Bus	3	3	5	13	n.a
Taxi	n.a	n.a	n.a	45	n.a
Motor vehicle registration					
Heavy	n.a	n.a	n.a	28	n.a
Medium	n.a	n.a	n.a	32	n.a
Small	n.a	n.a	n.a	355	n.a
Two wheeler	n.a	n.a	n.a	64	n.a
Auto Mobile workshop ³	1	1	1	2	3
Bus stations	1	1	1	1	1

Source: RSTA Regional Office, Tsirang.

Table 66: Roads and Bridges, Tsirang, (2007~2011)

Details	2007	2008	2009	2010	2011
Roads (Length in Km)	n.a	180.4	216.37	220.2	246.5
Farm roads ¹	n.a	68.9	104.8	108.7	135
Feeder roads ²	n.a	25	25	25	25
Forest roads ¹	n.a	6.5	6.5	6.5	6.5
Highways/Dzongkhag roads	n.a	80	80	80	80
Bridges (Number)					
Suspension bridge ¹	10	11	12	12	12
Suspended ¹	6	7	7	7	7
Bailey bridges ²	n.a	1	1	1	2
Traditional bridges ¹	0	0	0	0	0

Source: ¹Dzongkhag Engineering Section, ²Department of Roads, Tsirang.

Table 67. Telecommunications, Tsirang, (2007 ~ 2011)

Telecommunications	(Number)				
	2007	2008	2009	2010	2011
Households with fixed telephone connections	n.a	n.a	672	636	515
Tashi cell users	n.a	n.a	n.a	2743	2150
B.mobile users	n.a	n.a	n.a	n.a	16123
Community information centres	0	0	0	0	7
Gewogs accessible to mobile services	0	0	12	12	12
Households with internet access	0	n.a	n.a	139	229
Bhutan post office	1	1	1	1	1

Source: Gewog Administration Office & Regional Office, Tsirang Dzongkhag.

note: figures for B-mobile users are number of sim card distributed and T-cell users are approximate.

Table 68. Number of Establishment in Bnking and Finance, Tsirang, (2009 ~ 2011)

Number of establishments	(number)		
	2009	2010	2011
RICBL	1	1	1
BDFCL	1	1	1
BNB	N.A	N.A	N.A
Druk PNB	N.A	N.A	N.A
T Bank	N.A	N.A	N.A
Bhutan insurance limited	N.A	N.A	N.A
BOB	1	1	1

Source: Financial Institutions, Tsirang Dzongkhag.

Table 69. Number of account holders in Banks, Tsirang, (2010)

Number of facilities	Number of account holders (2010)				
	Loan	savings	current	fixed deposit	recurring deposit
RICB	52	N.A	N.A	N.A	N.A
BDBL	1067	1243	8	88	141
BNB	N.A	N.A	N.A	N.A	N.A
PNB	N.A	N.A	N.A	N.A	N.A
T Bank	N.A	N.A	N.A	N.A	N.A
Bhutan insurance limited	N.A	N.A	N.A	N.A	N.A
BOB	543	3365	218	n.a	n.a

Source: Financial Institutions, Tsirang Dzongkhag.

Table 70. Number of Administrative Units, Tsirang, (2007 ~ 2011)

Details	2007	2008	2009	2010	2011
Administration (Number)					
Drungkhags	N.A	N.A	N.A	N.A	N.A
Gewogs	12	12	12	12	12
Chiwogs	63	63	63	63	64
Villages	n.a	96	96	96	96
Households	n.a	n.a	n.a	n.a	n.a
Towns	1	1	1	1	1
Number of Police stations	1	1	1	1	1

Table 71. Recreation, Tourist Visitors and Accommodation, Tsirang, (2007 ~ 2011)

Details	2007	2008	2009	2010	2011
Number of children park	0	1	1	1	1
Number of hotels	n.a	n.a	n.a	n.a	13
Number of restaurants	n.a	n.a	n.a	n.a	16
Number of drayangs	0	0	0	0	0
Number of discotheques	0	0	0	0	0
Number of foreign tourist visitors	n.a	n.a	n.a	n.a	n.a

Source: Administration Office, Tsirang Dzongkhag.

National Statistics Bureau
ROYAL GOVERNMENT OF BHUTAN
P.O. Box No. 338 Thimphu
Telephone No: +975-2-322753/333296/325402
Fax: +975-2-323069

www.nsb.gov.bt

ISBN-978-99936-28-11-8