



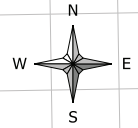
ANNUAL DZONGKHAG STATISTICS 2011



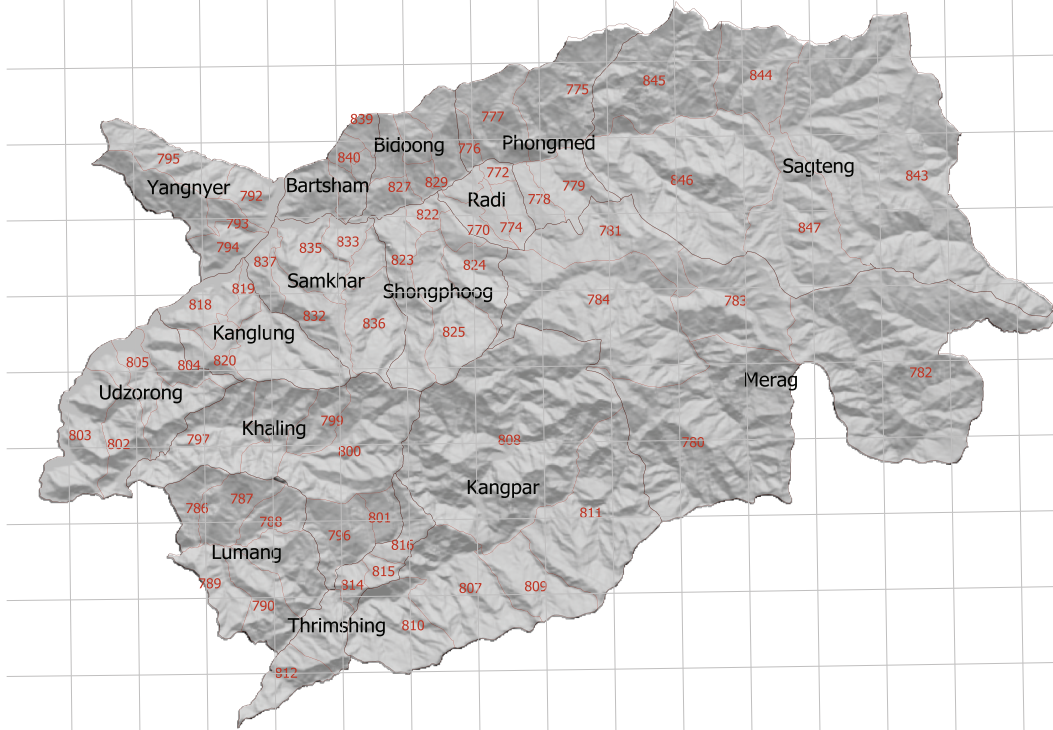
**Dzongkhag Administration
TRASHIGANG**



Trashigang Gewogs and Chiwogs as per the final delimitation order issued by the Election Commission of Bhutan



Gewog Boundries
Chiwog Boundries



© 2011

National Statistics Bureau

All rights reserved

Published by

National Statistics Bureau

Contact

National Statistics Bureau

PO Box No. 338

Telephone: +975-2-322753/333296

Fax: +975-2-323069

Website: www.nsb.gov.bt

Statistics Unit

Trashigang Dzongkhag

Telephone: +975-04-521229

Fax: +975-04-521245

Email: dchedup@nsb.gov.bt/

dso@trashigang.gov.bt

Second Issue

Catalogue No. 104

Contents

	page
Preface	i
Background of Dzongkhag	ii
Abbreviations	iv
Section 1. Population (Tables 1-2)	1-2
Population by Age-Group and Sex	1
Population Density and Sex Ratio	2
Section 2. Births, Deaths, Marriages, and Divorces (Tables 3-10)	3-6
Total number Live Births, Deaths, Marriages, and Divorces	3
Adolescent Birth Rate and Total Fertility Rate	3
Early Childbearing	4
Use of Contraception	4
Antenatal Care Provider	5
Number of Antenatal Care Visits	5
Assistance During Delivery	6
Place of Delivery	6
Section 3. Health and Nutrition (Tables 11-26)	7-16
Health Infrastructures, Facilities and Personnel	7
Hospital Admission and Average Length of Stay	8
Number of Surgeries	8
Number of Dental Services	8
Number of Top Ten Morbidity	9
Child Disability	9
Nutritional Status of Children	10
Initial Breastfeeding	10
Duration of Breastfeeding	11
Low Birth Weight Infants	11
Neonatal Tetanus Protection	11
Solid Fuel Use	12
Use of Improved Water Sources	13
Household Water Treatment	14
Time to Source of Drinking Water	15
Types of Sanitation Facilities	16

Section 4. Education (Tables 27-34)	17-24
Number of Schools, Institutions, Teachers and Students	17
School Enrolment by Grade and Sex	20
Student by Age-Group, Sex and by Level	22
Literacy Among Young Women	23
School Readiness	23
Primary School Entry	24
Children Reaching Last Grade of Primary School	24
Education Gender Parity	24
Section 5. Law Enforcement, Courts, and Prisons (Tables 35-38)	25-27
Summary of Crime Reports by Nature of Crime	25
Monthly Motor Vehicle Accidents	26
Causes of Motor Vehicle Accidents	26
Attitudes Toward Domestic Violence	27
Section 6. Geography and Environment (Tables 39-43)	27-29
Land Area and Damages Caused by Types	27
Average Monthly Temperature	28
Average Monthly Rainfall	28
Percentage of Forest Coverage, Number of Protected Spring and Lakes	29
Disposal of Childs Faeces	29
Section 7. Elections and Local Government (Tables 44-45)	30-31
Parliamentarians and Local Government Representatives	30
Parliamentarians and Local Government election expenditures	31
Section 8. Royal Government Finances and Employment (Tables 46-50)	32-34
Government Finance Expenditures	32
Dzongkhag 9th & 10th Five Year Plan Outlays	33
Dzongkhag 9th and 10th Five Year Plan Expenditure	33
Gewog 9th and 10th Five Year Plan Outlays	34
Gewog 9th and 10th Five Year Plan by Expenditures	34
Section 9. Labor Force, Employment, and Earnings (Tables 51-54)	35-38
Employed Persons by Age, Sex and Area of Residence	35
Employment by Industries, Age-Group and Sex	36
Child Labour	37
Child Labour and School Attendance	38

Section 10. Prices (Tables 55-55)	38-41
Agricultural Production & Average prices by commodities	38
Section 11. Agriculture (Tables 56-58)	41-43
Renewable Natural Resources	41
Agricultural Production by Types	41
Livestock Population by Types	42
Livestock Productions	43
Section 12. Forestry, Fishing and Mining (Tables 59-59)	44-44
Forestry Productions	44
Section 13. Energy and Utilities (Tables 60-60)	44-44
Electricity Generating Stations And Their Capacities	44
Section 14. Construction and Housing (Tables 61-62)	45-45
Number of Households by Area	45
Number of Building Permits issued by Towns	45
Section 15. Manufactures (Tables 63-63)	45-45
Number of Establishment by Type and Size	45
Section 16. Wholesale and Retail Trade (Tables 64-64)	46-46
Number of Wholesale, Retail Trade and Industrial licenses issued	46
Section 17. Transportation (Tables 65-66)	46-46
Number of Public Transport and Facilities	46
Roads and Bridges	47
Section 18. Information and Communications (Tables 67-67)	47-47
Telecommunications	47
Section 19. Banking, Finance, and Insurance (Tables 68-69)	47-48
Number of Establishment in Banking and Finance	47
Number of account holders in Banks	48
Section 20. Arts, Recreation, Accommodation and Monuments (Tables 70-71)	48-48
Number of Administrative Units	48
Recreation, Tourist Visitors and Accommodation	48



Preface

The Annual Dzongkhag Statistics of Trashigang is the second in the series of publications. It attempts to provide comprehensive statistics of Trashigang Dzongkhag and will be published annually.

The report contains statistics on demographic and socio-economic, environment, culture, local governance and infrastructures of the Dzongkhag. The statistical data for this publication are collected and compiled from various sectors and through primary sources.

We hope that this report will serve as a source of information and guiding tool for micro-level planning and decision-making in the Dzongkhag. Statistics office, Trashigang would like to thank and acknowledge the support and cooperation of all sector heads concerned for providing timely information for this report. Without their support, this publication would not have been possible. Through this initiative, we also hope that the maintenance of sectoral information and updation in the Dzongkhag will become more systematic and efficient henceforth.

Since this report is the first publication and with information source being from numerous sectors, we expect there may be certain deficiencies in terms of coverage and updation. However, there will be continuous efforts made to improve its coverage and quality in our future publications. Your comments and suggestions in this regard will be highly appreciated.

Dzongkhag Statistics Unit
Trashigang

Background

Trashigang Dzongkhag has bordered by Mongar Dzongkhag in the west, Samdrup Jongkhar and Pemagatshel Dzongkhag in the South, Trashi Yangtse Dzongkhag in the north and Indian state of Arunachal Pradesh in the east. Trashigang is one of the largest Dzongkhag in the Kingdom with total area about 3066.90 Sq. Km. In 2011 the projected population for the Dzongkhag is 53,293. Dangme chu, which is one of the largest river in the country passes through the Dzongkhag. The elevation ranges from 600 m to over 4500 m above sea level. The climate is mainly temperate with an annual rainfall between 1000 mm and 2000 mm.

Trashigang Dzongkhag has three Drungkhags (namely Sagteng, Wamrong and Thrimshing) and fifteen geogs, namely; Bartsham, Bidoong Kanglung, Kangpar, Khaling, Lumang, Merag, Phongmed, RadiRadhi, Sagteng, Samkhar, Shongphoog, Thrimshing, Udzorong and Yangnyer.

The Dzongkhag has 11 Extended Classroom, 31 Community Pry Schools, 10 Primary Schools, 10 Lower Secondary Schools, 5 Middle Secondary Schools, 4 Higher Secondary Schools, 1 National Institute for the Visually Impaired, 1 Rangjung Institute of Electrical Engineering, 1 Draksho Vocational Training Centre and 1 tertiary education center (Sherubtse College) which sum up to 75 schools/institutes with total students of 14,379 in 2011. There are 3 hospitals (including IMTART, RBA), 22 Basic Health Unit (both grade I & II), 3 sub posts and 57 out reach clinics rendering public health and 95.38 % of the population has access to safe drinking water supply. The 5 satellite towns and 384 villages of all 15 Gewogs has an access to electricity with the electricity coverage of 95.19% of which total consumer of 8011 and 87 households with solar light. The Rural Telecom Coverage of 98.39% with B-mobile connecting all Gewogs. The totals length of 720.95 Km with road network coverage of 72.61 % (1 hour walking distance from nearest access road) of which 121.1 Km national highways, 5 Km district roads, 118.31 Km feeder roads, 8.9 Km urban roads, 422.64 Km farms roads and power tiller tracks, 8.5 Km forest roads and 36.6 Km of access (approach) roads.

Trashigang dzong was built in 1659 by Trongsa Penlop, Chogyel Minjur Tempa (1659-1676 AD, the 3rd Deb of Bhutan). The dzong was then named as Trashigang, “the Fortress of the Auspicious Mountain”. The dzong was expended by Tenzin Rabgye, 4th Desi of Bhutan (1680-1694) and restored it around 1950 by Dasho Dopola, Trashigang

Dzongpon. During 1960s and 1970s late Lyonpo Tamzhing Jagar (then the Nyerchen of Trashigang), Dasho Kuenzang Tangbi, then Dzongdag of Trashigang carried out some repairs and changed the shingle roofing with asbestos sheet .

The dzong has 8 different Lhakhangs and these are Lam Lhakhang in the central tower which is dedicated to Shabdrung Rimpochhe, the Tshechu Lhakhang with Guru Tshengye, the Goenkhang dedicated to deities Mahakala and Mahakali, the Dupthob Lhakhang for Dupthob Thangthong Gyalpo and other great Buddhist saints, the Kuenray Lhakhang, the Tshokshing Lhakhang which has the lineage of Drukpa, Karmapa, Nyingmapa and Zogchen displayed and the Dema Lhakhang with 21 kinds of Demas.

ABBREVIATIONS

%:	Percent	HSS:	Higher Secondary School
< :	Less than	Inst:	Institute
> :	Greater than	Kg:	Kilogram
AIDS:	Acquired Immune Deficiency Syndrome	LFS:	Labor Force Survey
Avg:	Average	LSS:	Lower Secondary School
BHU:	Basic Health Unit	Max:	Maximum
BLSS:	Bhutan Living Standard Survey	Min:	Minimum
Cft:	Cubic Feet	MSS:	Middle Secondary School
CPS:	Community Primary school	n.a:	Not Available
DPTH:	Diphtheria Parthuisis Tetanus Hepatitis B	N.A:	Not Applicable
DYT:	Dzongkhag Yargye Tsogdue	NFE:	Non Formal Education
FYP:	Five Year Plan	Nu:	Ngultrum
GDP:	Gross Domestic Product	ORC:	Outreach Clinic
GIS:	(Infrastructure mapping): Geographical Infrastructure System	PAR:	Poverty Analysis Report
Gm:	Gram	PHCB:	Population and Housing Census of Bhutan
GYT:	Gewog Yargye Tshogchung	PP:	Pre Primary
HIV:	Human Immune Virus	PS:	Primary School
Hr:	Hour	Pvt:	Private
		Qty:	Quantity
		Sq. Km:	Square Kilometer
		SYB:	Statistical Year Book
		TV:	Television

Table 1. Population by Age-Group and Sex, Trashigang, (2005 ~ 2011)

Age-group	2005	2006	2007	2008	2009	2010	2011
Total	48,783	49,523	50,271	51,024	51,780	52,536	53,293
0-4	4,843	5,243	5,570	5,893	6,211	6,519	6,472
5-9	5,797	5,153	5,015	4,898	4,799	4,719	5,045
10-14	6,356	5,546	5,457	5,355	5,248	5,144	4,999
15-19	6,521	5,451	5,468	5,477	5,470	5,441	5,388
20-24	4,665	5,117	5,157	5,191	5,223	5,252	5,282
25-29	3,400	4,585	4,674	4,754	4,825	4,891	4,949
30-34	2,765	3,813	3,940	4,073	4,202	4,320	4,428
35-39	2,705	3,185	3,268	3,353	3,446	3,553	3,674
40-44	2,217	2,588	2,678	2,774	2,871	2,965	3,055
45-49	2,179	2,132	2,186	2,243	2,309	2,382	2,466
50-54	1,805	1,758	1,803	1,851	1,901	1,954	2,008
55-59	1,515	1,442	1,473	1,507	1,544	1,584	1,627
60-64	1,356	1,165	1,187	1,211	1,237	1,265	1,296
65+	2,659	2,345	2,395	2,444	2,494	2,547	2,604
Male	24,912	25,234	25,565	25,902	26,242	26,582	26,925
0-4	2431	2,556	2,716	2,874	3,030	3,181	3,157
5-9	2924	2,526	2,453	2,392	2,340	2,298	2,458
10-14	3260	2,740	2,690	2,634	2,577	2,522	2,446
15-19	3431	2,732	2,727	2,721	2,709	2,687	2,654
20-24	2528	2,646	2,647	2,644	2,641	2,639	2,640
25-29	1664	2,411	2,452	2,487	2,515	2,537	2,552
30-34	1340	2,029	2,090	2,154	2,216	2,272	2,323
35-39	1335	1,700	1,744	1,789	1,836	1,890	1,950
40-44	1098	1,363	1,414	1,469	1,524	1,577	1,626
45-49	1101	1,112	1,140	1,170	1,206	1,246	1,294
50-54	913	913	936	960	986	1,013	1,041
55-59	803	744	760	777	796	816	838
60-64	719	596	607	618	631	645	661
65+	1,365	1,166	1,189	1,213	1,235	1,259	1,285

Female	23,871	24,289	24,706	25,122	25,538	25,954	26,368
0-4	2,412	2,687	2,854	3,019	3,181	3,338	3,315
5-9	2,873	2,627	2,562	2,506	2,459	2,421	2,587
10-14	3,096	2,806	2,767	2,721	2,671	2,622	2,553
15-19	3,090	2,719	2,741	2,756	2,761	2,754	2,734
20-24	2,137	2,471	2,510	2,547	2,582	2,613	2,642
25-29	1,736	2,174	2,222	2,267	2,310	2,354	2,397
30-34	1,425	1,784	1,850	1,919	1,986	2,048	2,105
35-39	1,370	1,485	1,524	1,564	1,610	1,663	1,724
40-44	1,119	1,225	1,264	1,305	1,347	1,388	1,429
45-49	1,078	1,020	1,046	1,073	1,103	1,136	1,172
50-54	892	845	867	891	915	941	967
55-59	712	698	713	730	748	768	789
60-64	637	569	580	593	606	620	635
65+	1,294	1,179	1,206	1,231	1,259	1,288	1,319

Note: Figures for the year 2006 onwards are based on the projected population
Source: Population & Housing Census of Bhutan, 2005

Table 2. Population, Density and Sex Ratio, Trashigang, (2005 ~ 2011)

Details	2005	2006	2007	2008	2009	2010	2011
Population (Number)	48,783	49,523	50,271	51,024	51,780	52,536	53,293
Population density (Persons per Sq. Km)	16	16	16	17	17	17	17
Population sex ratio	101	104	103	103	103	102	102

Source : Dzongkhag Population Projection 2006-2015

Table 3. Total Number of Live Births, Deaths, Marriages Certificate issued, Trashigang, (2008 ~ 2011)

Age-group	2008	2009	2010	2011
Live births	n.a	n.a	n.a	n.a
Male	n.a	n.a	n.a	n.a
Female	n.a	n.a	n.a	n.a
Total deaths	n.a	n.a	n.a	n.a
Male	n.a	n.a	n.a	n.a
Female	n.a	n.a	n.a	n.a
Infant deaths	n.a	n.a	n.a	n.a
Male	n.a	n.a	n.a	n.a
Female	n.a	n.a	n.a	n.a
Marriages ¹	n.a	n.a	134	532
Matrimonial cases ¹	n.a	n.a	50	57

Note: 1 Figure of Trashigang Dzongkhag Court not included other Dungkhag court
 Source: Dzongkhag Court, Trashigang

Table 4. Adolescent Birth rate and Total fertility rate, Trashigang, (2010)

Details	2010
Adolescent birth rate (age specific fertility rate for women age 15-19)	86
Total fertility rate	2.9

Source : BMIS, 2010

Table 5. Early Childbearing, Trashigang, (2010)

Percentage of women age 15-19 who have had livebirth or who are pregnant with the first child; percentage of women age 15-19 who have begun childbearing before age 15, and the percentage of women age 20~24 who have had a live birth before age 18.

Details	2010
% of women age 15~19	26.8
Have had a live birth	9.7
Are pregnant with first child	3.7
Have begun childbearing	13.4
Have had a live birth before 15	0.0
Number of women age 15~19	91.0
% of women age 20~24 who have had a live birth before age 18	21.6
Number of women age 20~24	139.0

Source : BMIS, 2010

Table 6. Use of Contraception, Trashigang, (2010)

Percentage of Women age 15~49 Years Currently Married or in Union Who are using (or whose partner is using) a Contraceptive Method.

Details	2010
Not using any method	35.8
Percent of women (currently married or in union) who are using	
Female sterilization	3.6
Male sterilization	12.7
IUD	2.6
Injectables	38.2
Implants	0.0
Oral contraceptive Pill	6.0
Male condom	1.1
Female condom	0.1
Foam/ jelly	0.0
Lactational amenorrhoea method (LAM)	0.0
Periodic abstinence/ rhythm	0.0
Withdrawal	0.0
Other	0.0
Any modern method	64.2
Any traditional method	0.0
Any method	64.2
Number of women currently married or in union	772

Source : BMIS, 2010

Table 7. Antenatal Care Provider, Trashigang, (2010)

Percent Distribution of Women Aged 15~49 Who Gave Birth in The Survey by Type of Personnel Providing Antenatal Care.

Details	2010
Persons providing antenatal care	
Doctor	20.2
Nurse/ midwife	18.8
HA/ BHW	54.8
Assistant clinical officer (ACO)	0.8
Traditional birth attendant	0.0
Village health worker	1.3
Other/ missing	0.0
No antenatal care received	4.1
Total	100.0
At Least once by skilled personnel	94.7
Number of women who gave birth in the preceding 2 years	161

Source : BMIS, 2010

Table 8. Number of Antenatal Care Visits, Trashigang, (2010)

Percentage of Women Who had a Live Births During the Two Years Preceding the Survey by Number of Antenatal Care Visits by Any Provider.

Details	2010
Percent of women who had	
No antenatal care visits	4.1
1 Visits	5.2
2 Visits	3.5
3 Visits	16.9
4 or more visits	69.3
Missing/ DK	1.1
Total	100.0
Number of women who gave birth in the preceding 2 years	161

Source : BMIS, 2010

Table 9. Assistance During Delivery, Trashigang, (2010)

Percent Distribution of Women age 15-49 Who had a Live Birth in the Two Years Preceding the Survey by Person Assisting, at Delivery and Percentage of Births Delivered by C-section.

Details	2010
Person assisting at delivery	
Doctor	17.9
Nurse / Midwife	8.9
HA/BHW	12.5
Asst. clinical officer (ACO)	0.0
Traditional birth attendant	0.0
Village health worker	0.0
Relative / friend	49.0
Other/missing	11.1
No attendant	0.5
Total	100.0
Any skilled personnel	39.3
Percent delivered by C-section	10.1
Number of women who gave birth in preceding two years	161

Source : BMIS, 2010

Table 10. Place of Delivery, Trashigang, (2010)

Percent Distribution of Women age 15-49 With a Birth in Two Years Preceding the Survey by Place of Delivery.

Details	2010
Place of delivery	
Public sector health facility	35.9
Private sector health facility	0.6
Home	63.5
Other	0.0
Total	100.0
Delivered in health facility [1]	36.5
Number of women who gave birth in preceding two years	161

Source : BMIS, 2010

Table 11. Health Infrastructures, Facilities and Personnel, Trashigang, (2007 ~ 2010)

Details	2007	2008	2009	2010
Number of hospitals	3	3	3	3
Number of BHUs	22	22	22	23
BHU grade I	2	2	2	2
BHU grade II	20	20	20	21
Number of ORCs	57	53	57	54
Number of indigenous units	3	4	4	4
Number of doctors	5	8	7	7
Number of hospital/BHU beds	n.a	107	n.a	40
Persons per doctor	n.a	n.a	n.a	n.a
Persons per hospital bed	n.a	n.a	n.a	n.a
Total morbidity attendance	n.a	143,008	n.a	137,448
Health assistants	15	29	34	27
Basic health workers	16	16	17	17
Sister and nurses	39	15	24	25
Technicians	24	25	28	28
Indigenous dungtsho	2	2	2	2
Indigenous compounders/Menpas	4	4	4	4
Malaria workers	n.a	n.a	n.a	0
Village health workers	80	55	65	54
Number of children immunized	n.a	257	n.a	847
Polio	n.a	959	n.a	341
DPTH	n.a	896	n.a	2,686
Measles	n.a	840	n.a	847
BCG	n.a	n.a	n.a	924
Others	n.a	1,695	n.a	795

Source: Dzongkhag Health Sector, Trashigang Dzongkhag

Table 12. Hospital Admission and Average Length of Stay, Trashigang, (2007 ~ 2010)

Average admission	2007	2008	2009	2010
Hospital admission				
Total	n.a	2,989	3,524	3,508
Patient days	n.a	13,508	15,232	15,257
Average days	n.a	4.5	4.3	4.3
BHU admission	n.a	515	508	316

Source : Annual Health Bulletin, Ministry of Health, Thimphu

Table 13. Number of Surgeries, Trashigang, (2007 ~ 2010)

Details	2007	2008	2009	2010
Surgeries				
Caesarian Section	n.a	77	89	99
General Abdominal	n.a	17	24	61
General Others	n.a	136	128	214
Orthopaedic extremities	n.a	0	7	0
Orthopaedic Others	n.a	0	4	8
Gynaecology	n.a	17	37	55
ENT	n.a	0	0	0
Eye	n.a	10	12	84

Source : Annual Health Bulletin, Ministry of Health, Thimphu

Table 14. Number of Dental Services, Trashigang, (2007 ~ 2010)

Dental Services	2007	2008	2009	2010
Prophylaxis	n.a	52	38	50
Scaling	n.a	79	33	24
Fillings	n.a	1,293	1,191	1,189
Extractions	n.a	2,043	2,214	2,321
Others	n.a	1,264	1,732	2,146

Source : Annual Health Bulletin, Ministry of Health, Thimphu

Table 15: Number of Top Ten Morbidity, Trashigang, (2007~ 2010)

Priority health problem/ Disease	2007	2008	2009	2010
Diarrhoea	n.a	n.a	n.a	4,651
Conjunctivitis	n.a	n.a	n.a	7,072
Dysentery	n.a	n.a	n.a	2,142
Typhoid	n.a	n.a	n.a	-
Sexually transmitted disease, excluding HIV/AIDS	n.a	n.a	n.a	71
Diabetes	n.a	n.a	n.a	381
Tuberculosis	n.a	n.a	n.a	76
Early syphilis	n.a	n.a	n.a	-
Cholera	n.a	n.a	n.a	-
Tetanus	n.a	n.a	n.a	-
Diphtheria	n.a	n.a	n.a	-
Pertussis	n.a	n.a	n.a	-

Source : Dzongkhag Health Sector, Dzongkhag Administration, Trashigang

Table 16. Child Disability, Trashigang, (2010)

Child Disability	2010
Percentage of children aged 2-9 years with reported disability by type of disability	
Delay in sitting standing or walking	2.9
Difficulty seeing, either in the daytime or at night	1.0
Appears to have difficulty hearing	4.7
No understanding of instructions	4.1
Difficulty in walking moving, moving arms, weakness or stiffness	3.6
Have fits, become rigid, lose consciousness	3.5
Not learning to do things like other children his/her age	3.8
No speaking cannot be understood in words	11.3
Appears mentally backward, dull, or slow	2.7
Speech is not normal	8.6
Number of children aged 3-9 years	879.0
Cannot name at least one object	13.5
Number of children aged 2 years	108.0
Percentage of children 2-9 years of age with at least one reported disability*	29.8
Number of children aged 2-9 years	987

Source: BMIS, 2010

Table 17. Nutritional Status of Children, Trashigang, (2010)

Percentage of children under age 5 by nutritional status according to three anthropometric indices: weight for age, height for age, and weight for height.

Nutritional Status	2010
Weight for age: % below -2 sd [1]	17.7
Weight for age: % below -3 sd [2]	6.0
Weight for age: Mean Z-Score (SD)	(0.8)
Weight for age: Number of children	453.6
Height for age: % below -2 sd [3]	47.2
Height for age: % below -3 sd [4]	27.0
Height for age: Mean Z-Score (SD)	(1.9)
Height for age: Number of children	423.8
Weight for height: % below -2 sd [5]	8.8
Weight for height: % below -3 sd [6]	2.9
Weight for height: % above +2 sd	15.6
Weight for height: Mean Z-Score (SD)	0.4
Weight for height: Number of children	452

Source: BMIS, 2010

Table 18. Initial Breastfeeding, Trashigang, (2010)

Percentage of Last-Born Children in the 2 Years Preceding the Survey Who Were Ever Breastfed, Percentage Who Were Breastfed Within One Hour of Birth and Within One Day of Birth, and Percentage Who Received a Prelacteal Feed.

Initial Breastfeeding	2010
Percentage ever breastfed	97.4
Percentage who were first breastfed: Within one hour of birth	51.6
Percentage who were first breastfed: Within one day of birth	92.4
Percentage who received a prelacteal feed	8.1
Number of last-born children in the two years preceding the survey	161

Source: BMIS, 2010

Table 19. Duration of Breastfeeding, Trashigang, (2010)

Median duration of any breastfeeding, exclusive breastfeeding, and predominant breastfeeding among children age 0-35 months.

Duration of Breastfeeding	2010
Median duration (in months) of	
Any breastfeeding	25.9
Exclusive breastfeeding	1.4
Predominant breastfeeding	6.2
Number of children age 0-35 months	273

Source: BMIS, 2010

Table 20. Low Birth Weight Infants, Trashigang, (2010)

Percentage of Last-Born Children in the 2 Years Preceding the Survey That are Estimated to Have Weighed Below 2500 Grams at Birth and Percentage of Live Births Weighed at Birth.

Low Birth Weight Infants	2010
Percent of live births	
Below 2500 grams	9.0
Weighed at birth	47.0
Number of live births in the last 2 years	161

Source: BMIS, 2010

Table 21. Neonatal Tetanus Protection, Trashigang, (2010)

Percentage of women age 15-49 years with a live birth in the last 2 years protected against neonatal tetanus.

Neonatal Tetanus Protection	2010
Percentage of Women Who Received at Least 2 Doses During Last Pregnancy	
Percentage of women who did not receive two or more doses during last pregnancy but received	40.5
2 doses, the last within prior 3 years	15.5
3 doses, the last within prior 5 years	0.0
4 doses, the last within prior 10 years	0.0
5 or more doses during lifetime	0.0
Protected against tetanus [1]	56.0
Number of women with a live birth in the last 2 years	161

Source: BMIS, 2010

Table 22. Solid Fuel Use, Trashigang, (2010)

Percentage Distribution of Household Members According to Type of Cooking Fuel Used by the Household, and Percentage of Household Members Living in Households Using Solid Fuels for Cooking.

Solid Fuel Use	2010
Percentage of household members in households using	
Electricity	65.6
Liquefied Petroleum Gas (LPG)	2.5
Kerosene	0.0
Coal	0.0
Wood	31.9
Straw/Shrubs/Grass	0.0
No food cooked in household	0.0
Other	0.0
Total	100.0
Solid fuels for cooking	31.9
Number of household members	5,266

Source: BMIS, 2010

Table 23. Use of Improved Water Sources, Trashigang, (2010)

Percent distribution of household population according to main source of drinking water and percentage of household population using improved drinking water sources.

Water Sources	2010
Main source of drinking water	
Improved sources	98.6
Piped into dwelling	8.6
Piped into compound	70.7
Piped to neighbor	4.0
Public outdoor tap	9.9
Protected well	2.5
Spring	2.8
Rainwater collection	0.0
Bottled water	0.0
Unimproved sources	1.4
Unprotected well	0.4
Unprotected spring	0.5
Tanker-truck	0.0
Cart with samll tank/drum	0.0
Surface water (river,stream, dam, lake,pond,canal,irrigation channel)	0.6
Other	0.0
Total	100.0
Percentage using improved sources of drinking water	98.6
Number of household members	5,266

Source: BMIS, 2010

Table 24. Household Water Treatment, Trashigang, (2010)

Percentage of Household Population by Drinking Water Treatment Method Used in the Household, and for Household Members Living in Households Where an Unimproved Drinking Water Source is Used, the Percentage Who are Using an Appropriate Treatment Method

Water Treatment	2010
Water treatment method used in the household	
None	20.5
Boil	67.5
Add bleach / chlorine	0.0
Strain through a cloth	0.7
Use water filter	9.5
Solar disinfection	0.0
Let it stand and settle	18.4
Other	0.0
Don't know	0.0
Number of household members	5,266
Percentage of household members in households using unimproved drinking water sources and using an appropriate water treatment method [1]	(57.3)
Number of household members in households using unimproved drinking water sources	76

Source: BMIS, 2010

Table 25. Time to Source of Drinking Water, Trashigang, (2010)

Percent Distribution of Household Population According to Time to go to Source of Drinking Water, Get Water and Return, for Users of Improved and Unimproved Drinking Water Sources

Time to Source of Drinking Water	2010
Time to source of drinking water	
Users of improved drinking water sources	98.6
Water on premises	86.2
Less than 30 minutes	9.9
30 minutes or more	2.5
Missing/DK	0.0
Users of unimproved drinking water sources	1.4
Water on premises	0.1
Less than 30 minutes	1.2
30 minutes or more	0.1
Missing/DK	0.0
Total	100.0
Number of household members	5,266

Source: BMIS, 2010

Table 26. Types of Sanitation Facilities, Trashigang, (2010)

Percent Distribution of Household Population According to Type of Toilet Facility Used by the Household

Time to Source of Drinking Water	2010
Type of toilet facility used by household	
Improved sanitation facility	54.5
Flush toilet	0.1
Flush to septic tank(Without soak pit)	7.3
Flush to pit (latrine)	1.5
Flush to unknown place/not sure/DK where	0.0
Flush to septic tank (with soak pit)	11.9
Ventilated Improved Pit latrine (VIP)	0.0
Pit latrine with slab	33.8
Composing toilet	0.0
Unimproved sanitation facility	40.7
Flush to somewhere else	1.0
Pit latrine without slab /open pit	39.4
Long drop latrine	0.0
Bucket	0.1
Other	0.2
Missing	0.0
Open defecation (no facility, bush, field)	4.8
No facility,bush, field	4.8
Total	100.0
Number of household members	5,266

Source: BMIS, 2010

Table 27. Number of Schools, Institutions, Teachers and Students, Trashigang, (2008 ~ 2011)

Details	CPS	PS	LSS	MSS	HSS	College	Pvt.	Other	NFE	Daycare	Total
								Inst.	Centres	Centres	
2008											
Number of schools and institutions	35	11	10	2	3	1	n.a	2	n.a	n.a	64
Teaching staff											
Bhutanese	152	84	148	47	74	44	n.a	25	n.a	n.a	574
Male	123	54	104	26	61	33	n.a	21	n.a	n.a	422
Female	29	30	44	21	13	11	n.a	4	n.a	n.a	152
Non-Bhutanese	n.a	n.a	n.a	n.a	n.a	40	n.a	2	n.a	n.a	42
Male	n.a	n.a	n.a	n.a	n.a	33	n.a	2	n.a	n.a	35
Female	n.a	n.a	n.a	n.a	n.a	7	n.a	0	n.a	n.a	7
Temporary teachers	0	0	0	0	0	0	n.a	0	n.a	n.a	0
Male	0	0	0	0	0	0	n.a	0	n.a	n.a	0
Female	0	0	0	0	0	0	n.a	0	n.a	n.a	0
Number of students	3,252	1,025	4,021	650	1,833	760	n.a	220	n.a	n.a	11,761
Male	1,697		2,040		1,091	504	n.a	152	n.a	n.a	5,484
Female	1,555	1,025	1,981	650	742	256	n.a	68	n.a	n.a	6,277
Student to teacher ratio	21.4	12.2	27.2	13.8	24.8	9.0	n.a	8.1	n.a	n.a	19.1
2009											
Number of schools and institutions	35	12	9	4	3	1	n.a	2	n.a	n.a	66
Teaching staff											
Bhutanese	163	87	118	74	46	64	n.a	29	n.a	n.a	581
Male	n.a	n.a	n.a	n.a	n.a	44	n.a	24	n.a	n.a	68
Female	n.a	n.a	n.a	n.a	n.a	20	n.a	5	n.a	n.a	25

Non-Bhutanese	1	1	13	8	35	38	n.a	3	n.a	n.a	99
Male	n.a	n.a	n.a	n.a	n.a	34	n.a	3	n.a	n.a	37
Female	n.a	n.a	n.a	n.a	n.a	4	n.a	0	n.a	n.a	4
Temporary teachers	0	0	0	0	0	0	n.a	0	n.a	n.a	0
Male	0	0	0	0	0	0	n.a	0	n.a	n.a	0
Female	0	0	0	0	0	0	n.a	0	n.a	n.a	0
Number of students	3,251	2,359	3,312	1,830	1,891	936	n.a	227	n.a	n.a	13,806
Male	1,699	1,221	1,669	868	1,100	598	n.a	137	n.a	n.a	7,292
Female	1,552	1,138	1,643	962	791	338	n.a	90	n.a	n.a	6,514
Student to teacher ratio	19.82	26.81	25.28	22.32	23.35	9	n.a	7.09	n.a	n.a	20.3
2010											
Number of schools and institutions	35	12	8	5	3	1	n.a	2	n.a	n.a	66
Teaching staff											
Bhutanese	169	98	108	91	55	69	n.a	29	n.a	n.a	619
Male	133	69	72	57	44	48	n.a	24	n.a	n.a	447
Female	36	29	36	34	11	21	n.a	5	n.a	n.a	172
Non-Bhutanese	0	2	11	8	28	34	n.a	3	n.a	n.a	86
Male	0	2	8	6	20	29	n.a	3	n.a	n.a	68
Female	0	0	3	2	8	5	n.a	0	n.a	n.a	18
Temporary teachers	0	0	0	0	0	0	n.a	0	n.a	n.a	0
Male	0	0	0	0	0	0	n.a	0	n.a	n.a	0
Female	0	0	0	0	0	0	n.a	0	n.a	n.a	0
Number of students	3,155	3,062	2,849	2,396	1,603	1,071	n.a	243	n.a	n.a	14,379
Male	1,634	1,180	1,426	1,202	894	643	n.a	145	n.a	n.a	7,124
Female	1,582	1,142	1,414	1,191	715	428	n.a	98	n.a	n.a	6,570
Student to teacher ratio	18.7	30.6	23.9	24.2	19.3	10.4	n.a	7.6	n.a	n.a	20.4

Table 28. School Enrolment by Grade and Sex, Trashigang, (2008~2011)

Class	2008	2009	2010	2011
Primary level	6,244	8,163	8,201	7,427
Total	1,005	1,187	1,229	976
Class PP	934	1,185	1,221	1,109
Class I	965	1,231	1,204	1,132
Class II	847	1,203	1,177	1,051
Class III	895	1,203	1,253	1,162
Class IV	848	1,110	1,086	1,069
Class V	750	1,044	1,031	928
Class VI	3,079	4,008	4,060	3,676
Male	3,165	4,155	4,141	3,751
Class PP	497	571	622	492
Class I	468	582	581	566
Class II	516	648	605	565
Class III	439	631	606	528
Class IV	449	621	662	599
Class V	421	561	543	534
Class VI	375	541	522	467
Female	3,079	4,008	4,060	3,676
Class PP	508	616	607	484
Class I	466	603	640	543
Class II	449	583	599	567
Class III	408	572	571	523
Class IV	446	582	591	563
Class V	427	549	543	535
Class VI	375	503	509	461

Secondary level				
Total	2,315	4,461	4,308	3,903
Class VII	679	1,015	1,054	829
Class VIII	613	890	904	766
Class IX	451	906	892	804
Class X	336	786	676	723
Class XI	118	372	407	404
Class XII	118	492	375	377
Male	1,123	2,379	2,261	2,014
Class VII	331	515	527	413
Class VIII	297	434	481	357
Class IX	219	470	439	417
Class X	168	412	353	364
Class XI	51	241	228	255
Class XII	57	307	233	208
Female	1,192	2,082	2,047	1,889
Class VII	348	500	527	416
Class VIII	316	456	423	409
Class IX	232	436	453	387
Class X	168	374	323	359
Class XI	67	131	179	149
Class XII	61	185	142	169

Source: Dzongkhag Education Sector, Trashigang Dzongkhag

Table 29. Student by Age-Group, Sex and by Level, Trashigang, (2008~2011)

Details	2008	2009	2010	2011
Students in primary school level (Class PP-VI)				
Total 6,062	8,163	8,166	7,551	
Age < 6 years	143	183	209	150
Age 6-12 years	4,898	6,637	6,597	6,149
Age 13 & above	1,021	1,343	1,360	1,252
Male	3,080	4,155	4,125	3,808
Age < 6 years	75	82	98	65
Age 6-12 years	2,485	3,346	3,294	3,071
Age 13 & above	520	727	733	672
Female	2,982	4,008	4,041	3,743
Age < 6 years	68	101	111	85
Age 6-12 years	2,413	3,291	3,303	3,078
Age 13 & above	501	616	627	580
Student in LSS level (Class VII-VIII)				
Total 1,292	1,905	1,958	1,940	
Age < 13 years	41	79	59	57
Age 13-14 years	470	694	749	923
Age 15 & above	781	1,132	1,150	960
Male 628	949	1,008	951	
Age < 13 years	20	38	28	27
Age 13-14 years	227	341	370	450
Age 15 & above	381	570	610	474
Female	664	956	950	989
Age < 13 years	21	41	31	30
Age 13-14 years	243	353	379	473
Age 15 & above	400	562	540	486
Students in MSS level (Class IX-X)				
Total 787	1,692	1,681	1,116	
Age < 15 years	6	36	45	875
Age 15-16 years	321	606	570	335
Age 17 & above	460	1,050	1,066	870
Male 387	882	860	558	
Age < 15 years	2	16	24	22
Age 15-16 years	151	309	280	308
Age 17 & above	234	557	556	558

Female	400	810	821	853
Age < 15 years	4	20	21	27
Age 15-16 years	170	297	290	312
Age 17 & above	226	493	510	514
Students in HSS level (Class XI-XII)				
Total 236	864	782	781	
Age < 17 years	0	132	61	24
Age 17-18 years	78	288	292	329
Age 19 & above	158	444	429	428
Male 108	548	461	463	
Age < 17 years	0	64	30	11
Age 17-18 years	30	172	166	187
Age 19 & above	78	312	265	265
Female	128	316	321	318
Age < 17 years	0	68	31	13
Age 17-18 years	48	116	126	142
Age 19 & above	80	132	164	163

Source : Education Sector, Trashigang, Dzongkhag

Note:*- 1. Details of from 1 ECR, 2 CPS & 1 LSS not received and not included above

Table 30. Literacy Among Young Women, Trashigang, (2010)

Literacy Among Young Women	2010
Percentage literate	40.3
Percentage not known	0.0
Number of women age 15-24 years	230

Source: BMIS, 2010

Table 31. School Readiness, Trashigang, (2010)

Percentage of children attending first grade of primary school who attended pre-school the previous year.

School Readiness	2010
Percentage of children attending first grade who attended preschool in previous year	0
Number of children attending first grade of primary school	135

Source: BMIS, 2010

Table 32. Primary School Entry, Trashigang, (2010)

Percentage of Children of Primary School Entry Age Entering Grade 1 (net intake rate)

Primary School Entry	2010
Percentage of children of primary school entry age entering grade 1	65.1
Number of children of primary school entry age	163

Source: BMIS, 2010

Table 33. Children Reaching Last Grade of Primary School, Trashigang, (2010)

Percentage of children entering first grade of primary school who eventually reach the last grade of primary school (Survival rate to last grade of primary school)

Details	2010
Percent attending grade 1 last year who are in grade 2 this year	100.0
Percent attending grade 2 last year who are attending grade 3 this year	99.0
Percent attending grade 3 last year who are attending grade 4 this year	99.2
Percent attending grade 4 last year who are attending grade 5 this year	99.0
Percent attending grade 5 last year who are attending grade 6 this year	99.0
Percent who reach grade 6 of those who enter grade 0	98.0

Source: BMIS, 2010

Table 34. Education Gender Parity, Trashigang, (2010)

Education gender parity Ratio of adjusted net attendance ratios of girls to boys, in primary and secondary school

Education Gender Parity	2010
Primary school adjusted net attendance ratio (NAR), girls	91.8
Primary school adjusted net attendance ratio (NAR), boys	92.4
Gender parity index (GPI) for primary school adjusted NAR	1.0
Secondary school adjusted net attendance ratio (NAR), girls	39.3
Secondary school adjusted net attendance ratio (NAR), boys	38.6
Gender parity index (GPI) for secondary school adjusted NAR	1.0

Source: BMIS, 2010

Table 35. Summary of Crime Reports by Nature of Crime, Trashigang, (2009 ~ 2011)
(Incident)

Nature of Crime	2009	2010	2011
Attempt, aiding and abetting, solicitation and criminal conspiracy	n.a	n.a	n.a
Homicide	n.a	n.a	n.a
Assault,battery and related offences	n.a	n.a	n.a
Kidnapping and related offences	n.a	n.a	n.a
Sexual offence	n.a	n.a	n.a
Offence against infant,child,mentally dissabled and incompetent person	n.a	n.a	n.a
Arson and related offences	n.a	n.a	n.a
Burglary, trespass and related offences	n.a	n.a	n.a
Larceny,robbery, armed robbery and related offences	n.a	n.a	n.a
Money laundering and smuggling	n.a	n.a	n.a
Embezzlement and bribery	n.a	n.a	n.a
Forgery and related offences	n.a	n.a	n.a
Defamation and related offences	n.a	n.a	n.a
Treason,terrorism and related offences	n.a	n.a	n.a
Offences against cultural and national heritage	n.a	n.a	n.a
Offences against judicial authority	n.a	n.a	n.a
Prostitution and related offences	n.a	n.a	n.a
Offences against the public welfare	n.a	n.a	n.a
Offences related to public and civic duties	n.a	n.a	n.a
Offences related to public order and tranquillity	n.a	n.a	n.a
Offences against privacy	n.a	n.a	n.a
Computer offences	n.a	n.a	n.a
Offences related to firearms and weapons	n.a	n.a	n.a
Offences related to protected species,controlled and other harmful substances	n.a	n.a	n.a
Motor vehicle offences	n.a	n.a	n.a
Others	n.a	n.a	n.a
Total crimes	n.a	n.a	n.a

Source:

Table 36. Monthly Motor Vehicle Accidents, Trashigang, (2009~ 2011)

Month	2009	2010	2011
January	n.a	n.a	n.a
February	n.a	n.a	n.a
March	n.a	n.a	n.a
April	n.a	n.a	n.a
May	n.a	n.a	n.a
June	n.a	n.a	n.a
July	n.a	n.a	n.a
August	n.a	n.a	n.a
September	n.a	n.a	n.a
October	n.a	n.a	n.a
November	n.a	n.a	n.a
December	n.a	n.a	n.a
Total	n.a	n.a	n.a

Source:

Table 37. Causes of Motor Vehicle Accidents, Trashigang, (2009~2011)

Details	2009	2010	2011
Mechanical fault	n.a	n.a	n.a
Drunk driving	n.a	n.a	n.a
Bad weather	n.a	n.a	n.a
Without licence	n.a	n.a	n.a
Unknown causes	n.a	n.a	n.a
Other causes	n.a	n.a	n.a
All causes	n.a	n.a	n.a

Source:

Table 38. Attitudes Toward Domestic Violence, Trashigang, (2010)

Details	2010
Percentage of women age 15-49 years who believe a husband is justified in beating his wife/partner	
If goes out without telling him	37.2
If she neglects the children	59.1
If she argues with him	39.4
If she refuses sex with him	28.0
If she burns the food	28.9
For any of these reasons	70.8
Number of women age 15-49 years	940

Source: BMIS, 2010

Table 39. Land Area and Damages Caused by Types, Trashigang, (2007 ~ 2010)

Details	2007	2008	2009	2010
Dzongkhag area (Sq. Km)	3,066.9	3,066.9	3,066.9	3,066.9
Total cultivated land (Acres) ¹	12,101	n.a	9,489	n.a
Damages caused by landslides ²				n.a
Farmland (acres)	n.a	n.a	0.38	n.a
Houses (Number)	n.a	n.a	na	n.a
Roads (Km)	n.a	n.a	n.a	n.a
Damages caused by floods ²				
Farmland (acres)	n.a	n.a	12.25	n.a
Houses (Number)	n.a	n.a	n.a	n.a
Roads (Km)	n.a	n.a	n.a	n.a
Crops affected by drought (acres)	n.a	n.a	12.25	n.a
Crops damaged by wild animals (acres)	n.a	n.a	55.77	489.0
Incidence of earthquake (Number of cases reported) ²	n.a	n.a	n.a	n.a
Houses damaged by earthquakes (Number)	n.a	n.a	324	n.a
Number of forest fires ³	16	6	9	15
Acreage destroyed by forest fires	564.6	3,596.0	1,204.2	3570.9
Acreage of reforestation ³	291.6	159.7	318.8	n.a
Houses/structures damaged by fires (Number) ³	n.a	n.a	n.a	n.a

Source: 1 Agriculture Sector, 2 Environment Sector, 3 Forest Sector, Trashigang Dzongkhag

Table 40. Average Monthly Temperature , Trashigang, (2010)

Month/ Temperature	(Degree Celsius)		
	Maximum	Minimum	Average
January	18.5	6.4	12.45
February	19	6.8	12.9
March	22	10.8	16.4
April	23.9	13.5	18.7
May	25.1	14.7	19.9
June	26.2	16.6	21.4
July	25.5	17.9	21.7
August	27.1	18.1	22.6
September	26	16.8	21.4
October	23.6	13.7	18.65
November	20.5	10.4	15.45
December	17.7	6.6	12.15
Annual	22.925	12.69166667	17.80833333

Source: SYB, NSB

Table 41. Average Monthly Rainfall, Trashigang, (2010)

Month/ Monthly Rainfall	(Millimeter)					
	Stations					
	Chazam	Kanglung	Khaling	Radhi	Thrimshing	Wamrong
January	0	1.2	0	0	1	18
February	0	5.6	0	5	2	3.5
March	92.8	78.4	67	127.1	90.2	76.3
April	128	96.6	147	72.2	286.9	281.2
May	70	110.4	80	164.8	206.6	175.1
June	186.2	279.4	114	-	283.8	322
July	256.4	257.4	168	-	392.8	393.8
August	91.8	134	131	-	229.2	471.2
September	48.6	101.8	131	-	78.2	61
October	66.4	72	42	-	45.2	22.7
November	15.3	12.6	23	-	0.8	21.9
December	0	0	0	1	0	1
Annual total rainfall	955.5	1149.4	903	370.1	1616.7	1847.7

Source: SYB, NSB

Table 42. Percentage of Forest Coverage, Number of Protected Spring and Lakes, Trashigang, (2010)

Details	2010
Forest coverage (%) ¹	77.70
Number of snow fall at Dzongkhag headquarter	0
Number of Protected spring water sources	n.a
Number of Lakes	n.a

Source: 1RNR Sector Tenth Plan Documents, Volumn I

Table 43. Disposal of Childs Faeces, Trashigang, (2010)

Percent distribution of children age 0-2 years according to place of disposal of child's faeces, and the percentage of children age 0-2 years whose stools were disposed of safely the last time the child passed stools

Disposal of Childs Faeces	2010
Place of disposal of child's faeces	
Child used toilet / latrine	13.3
Put / Rinsed into toilet or latrine	18.5
Put / Rinsed into drain or ditch	49.6
Thrown into garbage (solid waste)	3.1
Buried	1.7
Left in the open	13.0
Other	0.7
Total	100.0
Percentage of children whose stools were disposed of safely	31.8
Number of children age 0-2 years	271

Source: BMIS 2010

Table 44. Parliamentarians and Local Government Representatives, Trashigang, (2008 & 2011)

Details	2008	2011
Local governance (Number)		
Parliamentarians	6	6
Male	5	5
Female	1	1
Gups	15	15
Male	15	15
Female	0	0
Total gewog tshogpas	131	78
Male	121	74
Female	10	4
Total Mangmis	15	15
Male	15	15
Female	0	0
DYT members	31	31
Male	31	31
Female	0	1
GYT members	161	108
Male	151	104
Female	10	4
Polling stations	88	78
Eligible voters (18 years and above) ²	65,011	37,955
Male	32,881	18,416
Female	32,130	19,539
% of Voters turnout during election 1	n.a	38.1%
Male	n.a	36.6%
Female	n.a	39.5%
Total election staff in Dzongkhag	3	5
Male	2	4
Female	1	1

Note: 1 Percent of voter turnout is for first round of LG Election 2011

Source: Election Sector, Dzongkhag Administration, Trashigang

Table 45. Parliamentarians and Local Government Election Expenditures, Trashigang, (2008 & 2011)

Details	Amount (Nu. In million)
2008	
Parliamentarians (Number)	n.a
National council	n.a
National assembly	n.a
2011	
Local government	10.713
Gup	n.a
Mangmi	n.a
Tsogpa	n.a

Source: Election Office, Trashigang Dzongkhag

Table 46. Government Finance Expenditures, Trashigang, (2009 ~ 2011)

Details Sectors	2008-2009			2009-2010			2010-2011		
	Current	Capital	Total	Current	Capital	Total	Current	Capital	Total
Civil	29,518	13,941	43,459	37,081	26,424	63,505	42,979	51,947	94,925
Agriculture	7,429	16,247	23,676	10,297	23,041	33,338	11,407	24,617	36,024
Livestock	8,806	5,476	14,282	10,733	26,155	36,888	10,770	45,114	55,884
Forestry	5,939	4,914	10,853	6,655	1,405	8,060	7,474	3,825	11,299
Education	160,313	39,928	200,241	236,071	88,556	324,627	264,289	147,222	411,511
Health	37,542	28,573	66,115	48,924	28,580	77,504	54,558	26,758	81,316
Urban Development & Housing	15,242	4,739	19,981	22,461	3,683	26,144	22,196	41,920	64,116
Religious & Culture	1,364	7,426	8,790	1,070	17,696	18,766	1,635	17,339	18,974
Roads	n.a	n.a	n.a	n.a	n.a	n.a	n.a	n.a	n.a
Bhutan post	n.a	n.a	n.a	n.a	n.a	n.a	n.a	n.a	n.a
Telecommunication	n.a	n.a	n.a	n.a	n.a	n.a	n.a	n.a	n.a
Power	n.a	n.a	n.a	n.a	n.a	n.a	n.a	n.a	n.a
Trade & industry	n.a	n.a	n.a	n.a	n.a	n.a	n.a	n.a	n.a
Total	n.a	n.a	n.a	n.a	n.a	n.a	n.a	n.a	n.a
Total plan outlay	n.a	n.a	n.a	n.a	n.a	n.a	n.a	n.a	n.a

Source: Planning Unit, Dzongkhag Administration, Trashigang

Table 47. Dzongkhag 9th and 10th Five Year Plan Outlays, Trashigang

Sectors	9 FYP		10 FYP	
	Current	Capital	Current	Capital
Civil	157.7	n.a	174.8	n.a
Agriculture	26.7	n.a	43.2	n.a
Livestock	70.2	n.a	76.2	n.a
Forestry	9.8	n.a	5.3	n.a
Education	742.5	n.a	495.4	n.a
Health	122.6	n.a	221.9	n.a
Urban development & housing	88.5	n.a	165.3	n.a
Roads	14.5	n.a	-	n.a
Bhutan post	-	n.a	-	n.a
Telecommunication	-	n.a	-	n.a
Power	-	n.a	-	n.a
Trade & industry	1.0	n.a	-	n.a
Total	1,233.5	n.a	-	n.a
Total plan outlay		n.a	-	n.a

Source:Dzongkhag Administration, Trashigang

Table 48. Dzongkhag 9th and 10th Five Year Plan Expenditure, Trashigang

(in million Nu.)

Sectors	9 FYP		10 FYP	
	Current	Capital	Current	Capital
Civil	n.a	n.a	n.a	n.a
Agriculture	n.a	n.a	n.a	n.a
Livestock	n.a	n.a	n.a	n.a
Forestry	n.a	n.a	n.a	n.a
Education	n.a	n.a	n.a	n.a
Health	n.a	n.a	n.a	n.a
Urban development & housing	n.a	n.a	n.a	n.a
Roads	n.a	n.a	n.a	n.a
Bhutan post	n.a	n.a	n.a	n.a
Telecommunication	n.a	n.a	n.a	n.a
Power	n.a	n.a	n.a	n.a
Trade & industry	n.a	n.a	n.a	n.a
Total	n.a	n.a	n.a	n.a
Total plan expenditure	n.a	n.a	n.a	n.a

Table 49. Gewog 9th and 10th Five Year Plan Outlays, Trashigang

(In million Nu.)

Sectors	9 FYP		10 FYP	
	Current	Capital	Current	Capital
Civil	157.7		174.8	
Agriculture	26.7		43.2	
Livestock	70.2		76.2	
Forestry	9.8		5.3	
Education	742.5		495.4	
Health	122.6		221.9	
Urban development & housing	88.5		165.3	
Roads	14.5		-	
Bhutan post	-		-	
Telecommunication	-		-	
Power	-		-	
Trade & industry	1.0		-	
Total				
Total plan outlay				

Source: Planning Unit, Trashigang Dzongkhag

Table 50. Gewog 9th and 10th Five Year Plan by Expenditures, Trashigang

(In million Nu.)

Sectors	9 FYP		10 FYP	
	Current	Capital	Current	Capital
Civil				
Agriculture				
Livestock				
Forestry				
Education				
Health				
Urban development & housing				
Roads & bridges				
Religion & cultural				
Telecommunication				
Power				
Trade & Industry				
Total				
Total plan outlay				

Source: Dzongkhag Administration, Trashigang

Table 51. Employed Persons by Age, Sex and Area of Residence, Trashigang, (2008 ~ 2011)

Details	(Number)			
	2008	2009	2010	2011
Total	n.a	n.a	n.a	21600
Male	n.a	n.a	n.a	10600
Female	n.a	n.a	n.a	11000
Rural Total	n.a	n.a	n.a	20100
Male	n.a	n.a	n.a	9800
Female	n.a	n.a	n.a	10300
Urban Total	n.a	n.a	n.a	1500
Male	n.a	n.a	n.a	800
Female	n.a	n.a	n.a	700

Source: Labour Force Survey, MoLHR

Table 52. Employment by Industries, Age Group and Sex, Trashigang, (2009 ~ 2011)

Details	2009	2010	2011
Total labour force (Number)	n.a	n.a	22,100
Total employed (%)	n.a	n.a	97.7
Male	n.a	n.a	97.2
Female	n.a	n.a	98.2
Unemployment rate	n.a	n.a	2.3
Total employed in Agriculture (%)	n.a	n.a	72.2
Male	n.a	n.a	65.1
Female	n.a	n.a	79.1
Total employed in Industries (%)	n.a	n.a	16.2
Male	n.a	n.a	17.0
Female	n.a	n.a	15.5
Total employed in Services (%) ¹	n.a	n.a	11.1
Male	n.a	n.a	17.0
Female	n.a	n.a	5.5
Total unemployed by area (%)	n.a	n.a	n.a
Urban	n.a	n.a	n.a
Rural	n.a	n.a	n.a
Total un-employed by education (%)	n.a	n.a	n.a
Total unemployed grade XII and above	n.a	n.a	n.a
Total unemployed below grade XII	n.a	n.a	n.a
Total under employed (%)	n.a	n.a	n.a
Employed by age-group (%)	n.a	n.a	n.a
15-17 years	n.a	n.a	n.a
18-24 years	n.a	n.a	n.a
25-64 years	n.a	n.a	n.a
65 years and above	n.a	n.a	n.a
Unemployed by age-group (%)	n.a	n.a	n.a
15-17 years	n.a	n.a	n.a
18-24 years	n.a	n.a	n.a
25-64 years	n.a	n.a	n.a
65 years and above	n.a	n.a	n.a
Labor force participation rate (%)	n.a	n.a	n.a
Male participation rate	n.a	n.a	n.a
Female participation rate	n.a	n.a	n.a

Note: 1 Total employed in service included Government, Public corporation and private corporation

Source : Labour Force Survey, MoLHR

Table 53. Child Labour, Trashigang, (2010)

Percentage of Children by Involvement in Economic Activity and Household Chores During the Past Week, According to Age Groups, and Percentage of Children Age 5-14 Involved in Child Labour

Child labour	2010
Percentage of children age 5-11 involved in	
Economic activity	27.4
Working outside household	0.3
Paid work	0.0
Unpaid work	0.3
Working for family business	27.1
Economic activity for at least one hour	27.1
Household chores less than 28 hours	24.8
Household chores for 28 hours or more	0.8
Child labour	27.3
Number of children age 5-11	916
Percentage of children age 12-14 involved in	
Economic activity	54.5
Working outside household	7.8
Paid work	5.7
Unpaid work	2.1
Working for family business	46.7
Economic activity less than 14 hours	46.0
Economic activity for 14 hours or more	2.1
Household chores less than 28 hours	55.4
Household chores for 28 hours or more	1.2
Child labour	3.3
Number of children age 12-14	437
Total child labour [1]	19.6
Number of children age 5-14 years	1353

Source: BMIS,2010

Table 54. Child Labour and School Attendance, Trashigang, (2010)

Percentage of children age 5-14 years involved in child labour who are attending school, and percentage of children age 5-14 years attending school who are involved in child labour

Child Labour and School Attendance	2010
Percentage of children involved in child labour	19.6
Percentage of children attending school	85.4
Number of children age 5-14 years	1353
Percentage of child labourers who are attending school	90.7
Number of children age 5-14 years involved in child labour	265
Percentage of children attending school who are involved in child labour	20.8
Number of children age 5-14 years attending school	1156

Source: BMIS,2010

Table 55. Agriculture Production and Average Prices by Commodities, Trashigang, (2007 ~ 2010)

Details	2007	2008	2009	2010
Paddy				
Area (Acres)	2,552	n.a	2,208	1,845
Production (MT)	283	n.a	314	2,533
Price per Kg(Nu.)	n.a	n.a	25	n.a
Maize				
Area (Acres)	5,401	n.a	6,239	5,247
Production (MT)	705	n.a	707	6,908
Price per Kg(Nu.)	na	n.a	10	n.a
Wheat				
Area (Acres)	771	n.a	79	230
Production (MT)	25	n.a	8	255
Price per Kg(Nu.)	na	n.a	n.a	n.a
Barley				
Area (Acres)	1,365	n.a	228	251
Production (MT)	70	n.a	23	225
Price per Kg(Nu.)	na	n.a	n.a	n.a
Buckwheat				
Area (Acres)	1,767	n.a	629	799
Production (MT)	50	n.a	24	326
Price per Kg(Nu.)	na	n.a	n.a	n.a

Millet				
Area (Acres)	245	n.a	106	164
Production (MT)	10	n.a	4	99
Price per Kg(Nu.)		n.a	n.a	n.a
Fruits				
Apples				
Number of fruit bearing trees	8,343	n.a	452	819
Production (Kg)	50,378	n.a	8,639	20
Price per Kg(Nu.)	na	n.a	n.a	n.a
Oranges/ Mandarin				
Number of fruit bearing trees	20,380	n.a	15,177	14,240
Production (Kg)	516,411	n.a	450,384	561
Price per Kg(Nu.)	na	n.a	n.a	n.a
Banana				
Number of fruit bearing trees	12,900	n.a	3,961	5,223
Production (Kg)	125,388	n.a	32,678	48
Price per Dozen(Nu.)	na	n.a	n.a	n.a
Pear				
Number of fruit bearing trees	5,477	n.a	2,161	2,233
Production (Kg)	159,834	n.a	58,522	66
Price per Kg(Nu.)	n.a	n.a	n.a	n.a
Plum				
Number of fruit bearing trees	3,041	n.a	1,613	1,701
Production (Kg)	84,278	n.a	56,162	55
Price per Kg(Nu.)	n.a	n.a	n.a	n.a
Areca Nut				
Production (Pon)	N.A	N.A	N.A	N.A
Production (Nu.)	N.A	N.A	N.A	N.A
Price per 80 Piece/ Pon(Nu.)	N.A	N.A	N.A	N.A
Vegetables and Spices				
Potato				
Production (kg)	6,777,067	n.a	3,964,731	3,795
Production (Nu.)	20,892,002	18,172,567	51,137,958	n.a
Price per Kg(Nu.)	n.a	n.a	n.a	n.a
Chili				
Production (kg)	825,147	n.a	921,080	688
Production (MT.)	n.a	n.a	n.a	n.a
Price per Kg(Nu.)	n.a	n.a	n.a	n.a

Onion				
Production (kg)	n.a	n.a	31,892	n.a
Production (Nu.)	n.a	n.a	n.a	n.a
Price per Kg(Nu.)				
Cabbage				
Production (kg)	337,225	n.a	100,084	130
Production (Nu.)	n.a	n.a	n.a	n.a
Price per Kg(Nu.)	n.a	n.a	n.a	n.a
Cauliflower				
Production (kg)	47,124	n.a	32,707	26
Production (Nu.)	n.a	n.a	n.a	n.a
Price per Kg(Nu.)	n.a	n.a	n.a	n.a
Asparagus				
Production (Bundles)	n.a	n.a	n.a	n.a
Production (Nu.)	n.a	n.a	n.a	n.a
Price per bunddle (Nu.)	n.a	n.a	n.a	n.a
Tomato				
Production (Kg)	47,738	n.a	29,008	16
Production (Nu.)	n.a	n.a	n.a	n.a
Price per Kg(Nu.)	n.a	n.a	n.a	n.a
Carrot				
Production (Kg)	n.a	n.a	6,665	8
Production (Nu.)	n.a	n.a	n.a	n.a
Price per Kg(Nu.)	n.a	n.a	n.a	n.a
Egg Plant (Brinjal)				
Production (Kg)	20,290	n.a	10,736	10
Production (Nu.)	n.a	n.a	n.a	n.a
Price per Kg(Nu.)	n.a	n.a	n.a	n.a
Raddish				
Production (Kg)	637,555	n.a	458,680	418
Production (Nu.)	n.a	n.a	n.a	n.a
Price per Kg(Nu.)	n.a	n.a	n.a	n.a
Ginger				
Production (Kg)	63,259	n.a	13,284	12
Production (Nu.)	n.a	n.a	n.a	n.a
Price per Kg(Nu.)	n.a	n.a	n.a	n.a
Cardamom				
Production (Kg)	n.a	n.a	n.a	na
Production (Nu.)	n.a	n.a	n.a	na
Price per Kg(Nu.)	n.a	n.a	n.a	na

Garlic				
Production (Kg)	n.a	n.a	n.a	120
Production (Nu.)	n.a	n.a	n.a	na
Price per Kg(Nu.)	n.a	n.a	n.a	na
Oil seeds and legumes				
Lentils				
Production (Kg)	n.a	n.a	n.a	n.a
Production (Nu.)	n.a	n.a	n.a	n.a
Price per Kg(Nu.)	n.a	n.a	n.a	n.a
Mustards				
Production (Kg)	n.a	n.a	n.a	244
Production (Nu.)	n.a	n.a	n.a	n.a
Price per Kg(Nu.)	n.a	n.a	n.a	n.a
Beans				
Production (Kg)	n.a	n.a	n.a	151
Production (Nu.)	n.a	n.a	n.a	n.a
Price per Kg(Nu.)	n.a	n.a	n.a	n.a

Note: All the production are in MT for the year 2010

Source: Annual Agriculture Statistics 2010

Table 56. Agriculture Infrastructures and Other Facilities , Trashigang, (2007 ~ 2010)

Details	2007	2008	2009	2010
Irrigation for agriculture				
Number of irrigation channels	n.a	n.a	46	64
Functional	n.a	n.a	41	54
Non-Functional	n.a	n.a	5.0	10.0
Total length of channels (Km)	n.a	n.a	113	160
Area covered by irrigation (Acres)	n.a	n.a	5,920	1,435
Number of households benefitted	n.a	n.a	1,863	3,276
Number of food processing units	n.a	n.a	n.a	18
Number of agriculture mills ¹	n.a	n.a	n.a	574
Number of livestock product processing units	n.a	n.a	n.a	2
Number of farmer association/groups	n.a	n.a	53	116
Agriculture	n.a	n.a	3	31
Livestock	n.a	n.a	21	55
Forestry	n.a	n.a	29	30
Number of power tillers	n.a	n.a	7	53

Source: RNR(Agriculture, Livestock, Forestry)Sector, Trashigang Dzongkhag

Table 57: Livestock Population by Types, Trashigang, (2007~2010)

Details	2007	2008	2009	2010
Livestock (Number)				
Cattle	21,730	23,319	26,645	20,640
Local breed	15,806	15,669	21,652	13,750
Male	4,261	4,491	6,795	3,123
Female	11,545	11,178	14,857	10,627
Improved breed	5,924	7,650	4,993	6,890
Male	955	968	830	824
Female	4,969	6,682	4,163	6,066
Mithun	6,800	7,343	41	36
Bufallo	N.A	N.A	N.A	N.A
Male	N.A	N.A	N.A	N.A
Female	N.A	N.A	N.A	N.A
Horse	4,296	6,067	3,595	2,193
Local breed	4,217	5,796	3,584	2,185
Improved breed	79	271	11	8
Yak	11,813	11,093	5,971	12,804
Male	3,915	2,976	2,059	4,544
Female	7,898	8,117	3,912	8,260
Sheep	2,866	2,049	2,227	1,333
Local breed	2,866	2,049	2,227	1,333
Improved breed	n.a	n.a	n.a	n.a
Pig	1,700	1,242	858	560
Local breed	1,060	848	476	421
Improved breed	640	394	382	139
Poultry	11,802	16,384	12,009	14,851
Local breed	9,531	14,314	10,090	6,796
Improved breed	2,271	2,070	1,919	8,055
Goat	129	-	85	72

Note: Mithun includes Bamin, Jatsa & Jatsam

Source: Livestock Sector, Dzongkhag Administration, Trashigang

Table 58: Livestock Productions, Trashigang, (2007~2010)

Details	2007	2008	2009	2010
Livestock products				
Fresh Milk (Liters)	2,713,980	2,171,780	2,949,590	2,324,591
Butter (Kg)	179,690	155,730	215,640	128,395
Fresh Cheese (Kg)	351,350	277,750	347,741	244,240
Processed cheese (kg)	n.a	n.a	n.a	n.a
Eggs (Dozen)	161,849	54,906	49,583	1,000,616
Fish (Kg)	n.a	n.a	n.a	n.a
Beef (Kg)	69,240	88,980	49,231	29,283
Pork (Kg)	39,090	17,710	5,984	2,945
Yak Meat (Kg)	14,840	13,570	1,939	1,885
Mutton (Kg)	50	140	204	n.a
Honey (Gm)	n.a	n.a	n.a	n.a
Chicken (Kg)	n.a	n.a	n.a	n.a

Source: Livestock Sector, Dzongkhag Administration, Trashigang

Table 59. Forestry Production, Trashigang, (2007 ~ 2010)

Details	2007	2008	2009	2010
Wood Forest Product				
Log Form (Cft)	n.a	n.a	n.a	50,088
Fire wood (Cubic metres)	3,148	5,208	907	5,211
Flag Poles (Number)	764	560	900	655
Shinglap (Number of trees)	41	32	6	11
Cham (Number of trees)	243	978	757	1,579
Tsim (Number of trees)	745	417	485	386
Non-Wood Forest Product				
Mushroom (Kg)	0	0	1,800	0
Mushroom (Nu.)	0	0	0	0
Medicinal and Aromatic plants (Kg)	n.a	n.a	n.a	n.a
Cordyceps (Kg)	n.a	n.a	n.a	n.a
Cordyceps (Nu.)	n.a	n.a	n.a	n.a
Sand (Truck load)	744	650	151	347
Stones (Truck load)	432	1,907	847	1,511
Bamboo (Number)	83,495	62,956	48,396	33,516
Cane (Bundles)	0	10	0	0
Lemon grass (Kg)	n.a	n.a	n.a	0
Mining Sites (Number)	n.a	n.a	n.a	0
Quarry Sites	n.a	n.a	n.a	0
Municipal Waste Disposal Sites	2	2	2	2
Environmental Clearance Issued	n.a	26	37	n.a

Source: Divisional Forest, Trashigang

Table 60. Electricity Generating Stations and Capacities, Trashigang, (2009 & 2010)

Stations	2009			2010		
	Installed capacity (no.x MW)	Generating capacity (MW)	Peak generation (MU)	Installed capacity (no.x MW)	Generating capacity (MW)	Peak generation (MU)
Rangjung Hydro Power	2.2	1.1	1	2.2	1.1	1

Source : Rangjung Hydro Power, Bhutan Power Corporation, Trashigang

Table 61. Number of Households by Area, Trashigang, (2009 ~ 2011)

Details	2009	2010	2011
Total number of household in Urban ¹	1,195	1,213	1,230
Total number of household in Rural ¹	9,717	9,859	10,001

Note: 1 Projected households by ratio estimate method based on PHCB 2005

Source: Population & Housing Census of Bhutan, 2005

Table 62. Number of Building Permits issued by Towns, Trashigang, (2009 ~ 2011)

new buildings	2009	2010	2011
Trashigang	4	6	6
Kanglung	1	0	0
Khaling	0	0	0
Wamrong	0	0	0
Rangjung	2	3	0

Source: Dzongkhag Municipal, Trashigang Dzongkhag

Table 63. Number of Establishment by Type and Size, Trashigang, (2009 ~ 2011)

Details	2009	2010	2011
Industries by type (Number)			
Agro based	2	1	0
Forestry based	3	5	4
Mineral based	36	0	0
Others	n.a	4	5
Industries by scale (Number)			
Large	n.a	0	1
Medium	n.a	0	0
Small	3	5	6
Cottage	36	41	25
Contract firms (Number)			
Large	n.a	0	0
Medium	n.a	2	1
Small	n.a	20	18

Source: Regional Trade Office, Mongar

Table 64. Number of Wholesale, Retail Trade and Industrial Licenses Issued, Trashigang, (2007 ~ 2011)

Details	(Number)				
	2007	2008	2009	2010	2011
Trade and Industries					
Micro & retail trade licences issued	82	73	74	75	96
Micro & retail trade licences in operation	71	61	69	74	95
Wholesale trade licences issued	n.a	1	1	2	1
Wholesale trade licences in operation	n.a	1	1	1	1
Services licences issued	36	23	33	46	32
Services licences in operation	18	17	30	45	30
Manufacturing licenses issued	1	8	8	10	9
Manufacturing licenses in operation	1	4	8	10	9

Source: Regional Trade Office, Mongar

Table 65. Number of Public Transport and Facilities, Trashigang, (2007 ~ 2010)

Details	(Number)			
	2007	2008	2009	2010
Public Service Transport	n.a	n.a	n.a	n.a
Bus	n.a	n.a	n.a	n.a
Taxi	n.a	n.a	n.a	n.a
Motor vehicle registration	n.a	n.a	n.a	n.a
Heavy	n.a	n.a	n.a	n.a
Medium	n.a	n.a	n.a	n.a
Small	n.a	n.a	n.a	n.a
Two wheeler	n.a	n.a	n.a	n.a
Auto Mobile workshop ³	3	3	3	3
Bus stations	1	1	1	1

Note: Dzongkhag wise information not available

Table 66: Roads and Bridges, Trashigang, (2007~2010)

Details	2007	2008	2009	2010
Roads (Length in Km)	n.a	451.1	451.1	721.0
Farm roads ¹	n.a	118	118	423
Feeder roads ²	n.a	118.3	118.3	118.1
Forest roads ¹	n.a	9	9	9
Highways/Dzongkhag roads	n.a	126	126	126
Bridges (Number)	34	35	35	37
Suspension bridge ¹	7	7	7	8
Suspended ¹	14	15	15	15
Bailey bridges ²	11	11	11	12
Traditional bridges ¹	2	2	2	2

Source: 1Dzongkhag Engineering Section,2Department of Roads, Trashigang

Note: Powertriller track included in Farm road

Table 67. Telecommunications, Trashigang, (2007 ~ 2010)

Telecommunications	(Number)			
	2007	2008	2009	2010
Households with fixed telephone connections	13,181	13,273	11,552	623
Tashi cell users	N.A	N.A	N.A	N.A
B.mobile users	n.a	n.a	n.a	n.a
Community information centres	1	0	1	6
Gewogs accessible to mobile services	13	13	13	15
Households with internet access	50	120	450	255
Bhutan post office	4	4	4	4

Source:Gewog Administration Office & Bhutan Telecom, Trashigang Dzongkhag.

Table 68. Number of Establishment in Bnking and Finance, Trashigang, (2009 ~ 2011)

Number of establishments	(number)		
	2009	2010	2011
RICBL	1	1	1
BDBL	2	2	2
BNB	1	1	1
Druk PNB	0	0	0
T Bank	0	0	0
Bhutan insurance limited	0	0	0
BOB	1	1	1

Source: Financial Institutions, Trashigang Dzongkhag

Table 69. Number of account holders in Banks, Trashigang, (2010)

Number of facilities	Number of account holders (2010)				
	Loan	savings	current	fixed deposit	recurring deposit
RICB	32	N.A	N.A	N.A	N.A
BDBL	1,800	1,729	5	25	110
BNB	283	659	12	572	2
PNB	N.A	N.A	N.A	N.A	N.A
T Bank	N.A	N.A	N.A	N.A	N.A
Bhutan insurance limited	N.A	N.A	N.A	N.A	N.A
BOB	n.a	n.a	n.a	n.a	n.a

Source: Financial Institutions, Trashigang Dzongkhag

Note: BDBL is Bhutan Development Bank Limited former BDFCL

Table 70. Number of Administrative Units, Trashigang, (2007 ~ 2011)

Details	2007	2008	2009	2010	2011
Administration (Number)					
Drungkhags	3	3	3	3	3
Gewogs	15	15	15	15	15
Chiwogs	252	252	252	252	78
Villages	252	252	252	252	252
Households ¹	10,595	10,753	10,913	11,072	11,231
Towns	6	6	6	6	6
Number of Police stations	4	4	4	4	4

Note: 1 Projected households by ratio estimate method based on PHCB 2005

Source: Dzongkhag Administration, Trashigang

Table 71. Recreation, Tourist Visitors and Accommodation, Trashigang, (2007 ~ 2011)

Details	2007	2008	2009	2010	2011
Number of children park	n.a	n.a	n.a	n.a	n.a
Number of hotels	n.a	n.a	n.a	n.a	n.a
Number of restaurants	n.a	n.a	n.a	n.a	n.a
Number of drayangs	n.a	n.a	n.a	n.a	n.a
Number of discotheques	n.a	n.a	n.a	n.a	n.a
Number of tourist visitors	n.a	n.a	n.a	n.a	n.a



National Statistics Bureau
ROYAL GOVERNMENT OF BHUTAN

P.O. Box No. 338 Thimphu

Telephone No: +975-2-322753/333296/325402

Fax: +975-2-323069

www.nsb.gov.bt

ISBN-978-99936-28-11-8