



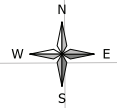
# ANNUAL DZONGKHAG STATISTICS 2011





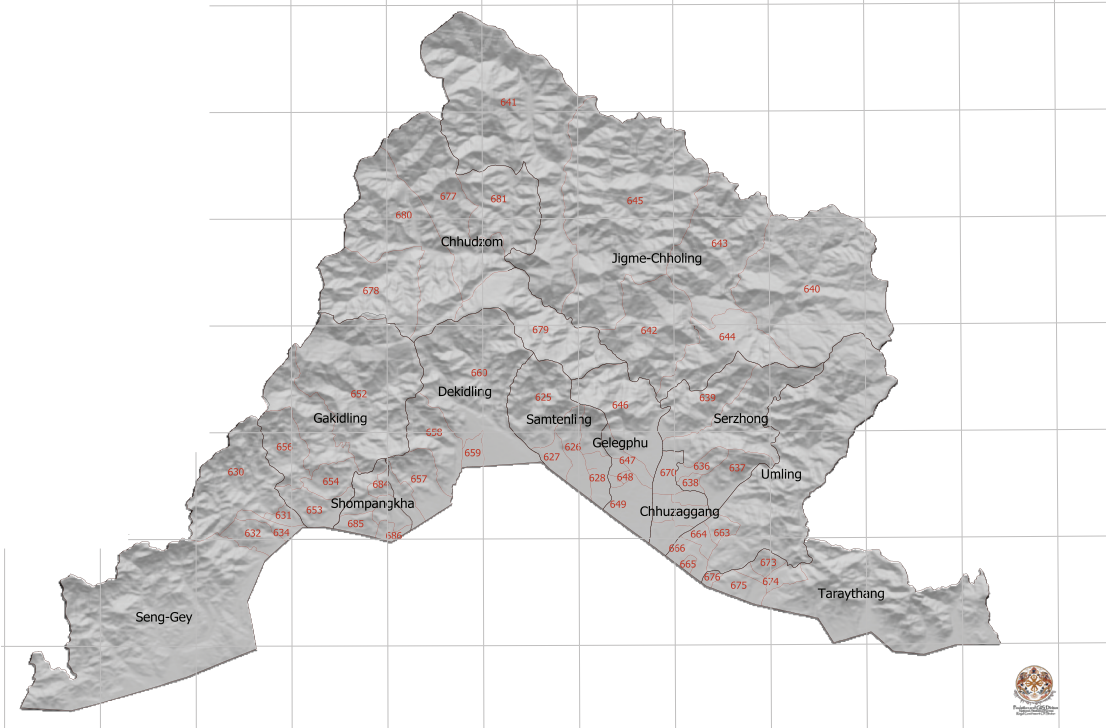
**Dzongkhag Administration  
SARPANG**



**Sarpang Gewogs and Chiwogs as per the final delimitation order issued  
by the  
Election Commission of Bhutan**



 Gewog Boundries  
 Chiwog Boundries



© 2011  
National Statistics Bureau

All rights reserved

Published by  
National Statistics Bureau

Contact  
National Statistics Bureau  
PO Box No. 338  
Telephone: +975-2-322753/333296  
Fax: +975-2-323069  
Website: [www.nsb.gov.bt](http://www.nsb.gov.bt)

Statistics Unit  
Sarpang Dzongkhag  
Telephone: +975-03-61386  
Fax: +975-03-361461  
Email:  
[kishore22cn@yahoo.co.uk](mailto:kishore22cn@yahoo.co.uk)

Second Issue  
Catalogue No. 104

## Contents

	<b>page</b>
<b>Preface</b>	<b>i</b>
Background of Dzongkhag	ii
Abbreviations	iii
<b>Section 1. Population (Tables 1-2)</b>	<b>1-2</b>
Population by Age-Group and Sex	1
Population Density and Sex Ratio	2
<b>Section 2. Births, Deaths, Marriages, and Divorces (Tables 3-10)</b>	<b>3-6</b>
Total number Live Births, Deaths, Marriages, and Divorces	3
Adolescent Birth Rate and Total Fertility Rate	3
Early Childbearing	4
Use of Contraception	4
Antenatal Care Provider	5
Number of Antenatal Care Visits	5
Assistance During Delivery	6
Place of Delivery	6
<b>Section 3. Health and Nutrition (Tables 11-26)</b>	<b>7-16</b>
Health Infrastructures, Facilities and Personnel	7
Hospital Admission and Average Length of Stay	8
Number of Surgeries	8
Number of Dental Services	8
Number of Top Ten Morbidity	9
Child Disability	9
Nutritional Status of Children	10
Initial Breastfeeding	10
Duration of Breastfeeding	11
Low Birth Weight Infants	11
Neonatal Tetanus Protection	12
Solid Fuel Use	12
Use of Improved Water Sources	13
Household Water Treatment	14
Time to Source of Drinking Water	15
Types of Sanitation Facilities	16

<b>Section 4. Education (Tables 27-34)</b>	<b>17-25</b>
Number of Schools, Institutions, Teachers and Students	17
School Enrolment by Grade and Sex	20
Student by Age-Group, Sex and by Level	22
Literacy Among Young Women	24
School Readiness	24
Primary School Entry	24
Children Reaching Last Grade of Primary School	25
Education Gender Parity	25
<b>Section 5. Law Enforcement, Courts, and Prisons (Tables 35-38)</b>	<b>26-28</b>
Summary of Crime Reports by Nature of Crime	26
Monthly Motor Vehicle Accidents	27
Causes of Motor Vehicle Accidents	27
Attitudes Toward Domestic Violence	28
<b>Section 6. Geography and Environment (Tables 39-43)</b>	<b>28-30</b>
Land Area and Damages Caused by Types	28
Average Monthly Temperature	29
Average Monthly Rainfall	29
Percentage of Forest Coverage, Number of Protected Spring and Lakes	30
Disposal of Childs Faeces	30
<b>Section 7. Elections and Local Government (Tables 44-45)</b>	<b>31-32</b>
Parliamentarians and Local Government Representatives	31
Parliamentarians and Local Government election expenditures	32
<b>Section 8. Royal Government Finances and Employment (Tables 46-50)</b>	<b>32-34</b>
Government Finance Expenditures	32
Dzongkhag 9th & 10th Five Year Plan Outlays	33
Dzongkhag 9th and 10th Five Year Plan Expenditure	33
Gewog 9th and 10th Five Year Plan Outlays	34
Gewog 9th and 10th Five Year Plan by Expenditures	34
<b>Section 9. Labor Force, Employment, and Earnings (Tables 51-54)</b>	<b>35-38</b>
Employed Persons by Age, Sex and Area of Residence	35
Employment by Industries, Age-Group and Sex	36
Child Labour	37
Child Labour and School Attendance	38

<b>Section 10. Prices (Tables 55-55)</b>	<b>38-41</b>
Agricultural Production & Average prices by commodities	38
<b>Section 11. Agriculture (Tables 56-58)</b>	<b>41-43</b>
Renewable Natural Resources	41
Agricultural Production by Types	41
Livestock Population by Types	42
Livestock Productions	43
<b>Section 12. Forestry, Fishing and Mining (Tables 59-59)</b>	<b>44-44</b>
Forestry Productions	44
<b>Section 13. Energy and Utilities (Tables 60-60)</b>	<b>45-45</b>
Electricity Generating Stations And Their Capacities	45
<b>Section 14. Construction and Housing (Tables 61-62)</b>	<b>45-45</b>
Number of Households by Area	45
Number of Building Permits issued by Towns	45
<b>Section 15. Manufactures (Tables 63-63)</b>	<b>46-46</b>
Number of Establishment by Type and Size	46
<b>Section 16. Wholesale and Retail Trade (Tables 64-64)</b>	<b>46-46</b>
Number of Wholesale, Retail Trade and Industrial licenses issued	46
<b>Section 17. Transportation (Tables 65-66)</b>	<b>47-47</b>
Number of Public Transport and Facilities	47
Roads and Bridges	47
<b>Section 18. Information and Communications (Tables 67-67)</b>	<b>48-48</b>
Telecommunications	48
<b>Section 19. Banking, Finance, and Insurance (Tables 68-69)</b>	<b>48-48</b>
Number of Establishment in Banking and Finance	48
Number of account holders in Banks	48
<b>Section 20. Arts, Recreation, Accommodation and Monuments (Tables 70-71)</b>	<b>49-49</b>
Number of Administrative Units	49
Recreation, Tourist Visitors and Accommodation	49





## **Preface**

The Annual Dzongkhag Statistics of Sarpang is the second in the series of publications. It attempts to provide comprehensive statistics of Sarpang Dzongkhag and will be published annually.

The report contains statistics on demographic and socio-economic, environment, culture, local governance and infrastructures of the Dzongkhag. The statistical data for this publication are collected and compiled from various sectors and through primary sources.

We hope that this report will serve as a source of information and guiding tool for micro-level planning and decision-making in the Dzongkhag. Statistics office, Sarpang would like to thank and acknowledge the support and cooperation of all sector heads concerned for providing timely information for this report. Without their support, this publication would not have been possible. Through this initiative, we also hope that the maintenance of sectoral information and updation in the Dzongkhag will become more systematic and efficient henceforth.

Since this report is the second publication and with information source being from numerous sectors, we expect there may be certain deficiencies in terms of coverage and updation. However, there will be continuous efforts made to improve its coverage and quality in our future publications. Your comments and suggestions in this regard will be highly appreciated.

National Statistics Bureau  
Thimphu

## **Background**

The Sarpang Dzongkhag is situated in the central southern foothills bordering India. The area of the Dzongkhag stretches from Phipsoo wildlife sanctuary in the west to Manas National Park in the east. The Dzongkhag shares about 200 km of common border with the Indian state of Assam to the south and the Dzongkhags of Tsirang and Dagana to the west, Zhemgang to the east and Trongsa to the north. It encompasses a total geographical area of approximately 1660.28 Sq.km. Its topographical features have undulated terrain with an elevation ranging from 200m to 3600m above mean sea level.

The Sarpang Dzongkhag is administratively supported by a Gelephu Dungkhag and consists of 12 Gewogs. Services and administrative support for five Gewogs, Gakiling (Hilley), Dekiling, Singye, Chhudzom (Dovan) and Shompangkha are provided from Dzongkhag headquarter. While seven Gewogs namely, Gelephu, Chuzargang, Umling, Sershong, Taraythang, Jigmechoeling and Samtenling (Bhur) are provided by Gelephu Drungkhag.

The Sarpang Dzongkhag has 61 chiwogs (Local Government Election, 2011) with 7346 households (PHCB, 2005) and 42,170 populations (Dzongkhag Population Projections).

Paddy, maize, wheat, and millet are some of the major crops cultivated in the Dzongkhag. Orange, areca nut, cardamom and ginger are grown as principal cash crops by the farmers of the Dzongkhag.

Favourable terrain and climatic conditions combined with fertile agriculture land offer tremendous opportunity for farm mechanization and commercial horticultural development.

## Abbreviations

%:	Percent	Inst:	Institute
< :	Less than	Kg:	Kilogram
> :	Greater than	LFS:	Labor Force Survey
AIDS:	Acquired Immune Deficiency Syndrome	LSS:	Lower Secondary School
Avg:	Average	Max:	Maximum
BHU:	Basic Health Unit	Min:	Minimum
BLSS:	Bhutan Living Standard Survey	MSS:	Middle Secondary School
Cft:	Cubic Feet	n.a:	Not Available
CPS:	Community Primary school	N.A:	Not Applicable
DPTH:	Diphtheria Parthuisis Tetanus Hepatitis B	NFE:	Non Formal Education
DYT:	Dzongkhag Yargye Tsogdue	Nu:	Ngultrum
FYP:	Five Year Plan	ORC:	Outreach Clinic
GDP:	Gross Domestic Product	PAR:	Poverty Analysis Report
GIS:	(Infrastructure mapping): Geographical Infrastructure System	PHCB:	Population and Housing Census of Bhutan
Gm:	Gram	PP:	Pre Primary
GYT:	Gewog Yargye Tshogchung	PS:	Primary School
HIV:	Human Immune Virus	Pvt:	Private
Hr:	Hour	Qty:	Quantity
HSS:	Higher Secondary School	Sq.Km:	Square Kilometer
		SYB:	Statistical Year Book
		TV:	Television



**Table 1. Population by Age-Group and Sex, Sarpang, (2005 ~ 2011)**

Age-group	2005	2006	2007	2008	2009	2010	2011
Total	41,549	37,916	38,740	39,581	40,436	41,300	42,170
0-4	4,401	4,011	4,289	4,568	4,846	5,121	5,117
5-9	4,858	3,942	3,862	3,796	3,744	3,706	3,989
10-14	4,990	4,243	4,203	4,152	4,096	4,040	3,952
15-19	4,757	4,172	4,212	4,247	4,269	4,275	4,261
20-24	4,598	3,919	3,975	4,027	4,078	4,128	4,178
25-29	3,910	3,512	3,604	3,690	3,771	3,847	3,918
30-34	2,851	2,922	3,040	3,162	3,284	3,400	3,507
35-39	2,509	2,441	2,521	2,604	2,695	2,796	2,910
40-44	1,956	1,983	2,066	2,154	2,245	2,334	2,421
45-49	1,884	1,632	1,685	1,742	1,804	1,874	1,953
50-54	1,456	1,347	1,390	1,437	1,486	1,537	1,590
55-59	1,022	1,104	1,136	1,170	1,206	1,245	1,288
60-64	838	892	915	940	966	995	1,026
65+	1,519	1,796	1,142	1,892	1,946	2,000	2,060
Male	21,664	19,732	20,139	20,554	20,974	21,398	21,826
0-4	2,154	1,999	2,140	2,281	2,422	2,561	2,559
5-9	2,446	1,975	1,933	1,898	1,870	1,850	1,993
10-14	2,523	2,143	2,119	2,091	2,060	2,030	1,983
15-19	2,327	2,136	2,148	2,160	2,165	2,163	2,151
20-24	2,516	2,069	2,085	2,098	2,111	2,124	2,140
25-29	2,124	1,885	1,931	1,973	2,010	2,042	2,069
30-34	1,542	1,586	1,647	1,709	1,771	1,829	1,883
35-39	1,364	1,329	1,374	1,419	1,468	1,521	1,581
40-44	1,047	1,066	1,114	1,166	1,218	1,269	1,318
45-49	997	869	898	929	964	1,003	1,049
50-54	760	714	737	762	788	816	844
55-59	582	582	599	617	636	657	679
60-64	442	466	478	491	505	520	536
65+	840	913	936	960	987	1,013	1,041

Female	19,885	18,184	18,601	19,027	19,462	19,902	20,343
0-4	2,247	2,012	2,149	2,287	2,424	2,560	2,557
5-9	2,412	1,967	1,929	1,898	1,874	1,856	1,996
10-14	2,467	2,100	2,084	2,061	2,036	2,010	1,970
15-19	2,430	2,036	2,064	2,087	2,104	2,112	2,109
20-24	2,082	1,850	1,890	1,929	1,967	2,004	2,038
25-29	1,786	1,627	1,673	1,717	1,761	1,805	1,949
30-34	1,309	1,336	1,393	1,453	1,513	1,571	1,624
35-39	1,145	1,112	1,147	1,185	1,227	1,275	1,330
40-44	909	917	952	988	1,026	1,065	1,103
45-49	887	763	787	813	841	871	904
50-54	696	633	653	675	698	721	746
55-59	440	522	537	553	570	589	609
60-64	396	426	437	449	462	476	490
65+	679	883	906	932	959	987	1,017

Note: Figures for the year 2006 onwards are based on the projected population

Source: Population & Housing Census of Bhutan, 2005

**Table 2. Population, Density and Sex Ratio, Sarpang , (2005 ~ 2011)**

Details	2005	2006	2007	2008	2009	2010	2011
Population (Number)	41,549	37,914	38,741	39,583	40,436	41,300	42,170
Population density (Persons per Sq. Km)	18	16	17	23	24	24	25
Population sex ratio	109	109	108	108	108	108	107

Source : Dzongkhag Population Projection 2006-2015

**Table 3. Total Number of Live Births, Deaths, Marriages and Divorces, Sarpang, (2008 ~ 2010)**

Age-group	2008	2009	2010
Live births	737	926	612
Male	389	487	311
Female	348	439	301
Total deaths	95	81	95
Male	53	52	49
Female	42	29	46
Infant deaths	11	7	6
Male	3	4	4
Female	8	3	2
Marriages	n.a	18,353	16,413
Male	n.a	n.a	n.a
Female	n.a	n.a	n.a
Divorces	n.a	221	337
Male	n.a	n.a	n.a
Female	n.a	n.a	n.a

Source: Dzongkhag Health Sector, Sarpang Dzongkhag

**Table 4. Adolescent Birth rate and Total fertility rate, Sarpang , (2010)**

Details	2010
Adolescent birth rate (age specific fertility rate for women age 15-19)	37.0
Total fertility rate	2.5

Source : BMIS, 2010

**Table 5. Early Childbearing, Sarpang , (2010)**

Percentage of women age 15-19 who have had livebirth or who are pregnant with the first child; percentage of women age 15-19 who have begun childbearing before age 15, and the percentage of women age 20~24 who have had a live birth before age 18.

Details	2010
% of women age 15~19	
Have had a live birth	7.2
Are pregnant with first child	0.8
Have begun childbearing	8.0
Have had a live birth before 15	0
Number of women age 15~19	141
% of women age 20~24 who have had a live birth before age 18	18.6
Number of women age 20~24	173

Source : BMIS, 2010

**Table 6. Use of Contraception, Sarpang , (2010)**

Percentage of Women age 15~49 Years Currently Married or in Union Who are using (or whose partner is using) a Contraceptive Method.

Details	2010
Not using any method	
Percent of women (currently married or in union) who are using	32.6
Female sterilization	5.0
Male sterilization	11.7
IUD	4.7
Injectables	29.6
Implants	0
Oral contraceptive Pill	9.4
Male condom	6.3
Female condom	0
Foam/ jelly	0
Lactational amenorrhoea method (LAM)	0
Periodic abstinence/ rhythm	0.5
Withdrawal	0.2
Other	0
Any modern method	66.8
Any traditional method	0.6
Any method	67.4
Number of women currently married or in union	651

Source : BMIS, 2010



**Table 7. Antenatal Care Provider, Sarpang , (2010)**

Percent Distribution of Women Aged 15~49 Who Gave Birth in The Survey by Type of Personnel Providing Antenatal Care.

Details	2010
Persons providing antenatal care	
Doctor	9.3
Nurse/ midwife	70.2
HA/ BHW	20.4
Assistant clinical officer (ACO)	0.0
Traditional birth attendant	0.0
Village health worker	0.0
Other/ missing	0.0
No antenatal care received	0.0
Total	100
At Least once by skilled personnel	100
Number of women who gave birth in the preceding 2 years	132

Source : BMIS, 2010

**Table 8. Number of Antenatal Care Visits, Sarpang , (2010)**

Percentage of Women Who had a Live Births During the Two Years Preceding the Survey by Number of Antenatal Care Visits by Any Provider.

Details	2010
Percent of women who had	
No antenatal care visits	0.0
1 Visits	0.3
2 Visits	0.0
3 Visits	4.9
4 or more visits	94.9
Missing/ DK	0.0
Total	100
Number of women who gave birth in the preceding 2 years	132

Source : BMIS, 2010

**Table 9. Assistance During Delivery, Sarpang , (2010)**

Percent Distribution of Women age 15-49 Who had a Live Birth in the Two Years Preceding the Survey by Person Assisting, at Delivery and Percentage of Births Delivered by C-section.

Details	2010
Person assisting at delivery	
Doctor	37.8
Nurse / Midwife	20.7
HA/BHW	3.9
Asst. clinical officer (ACO)	0.0
Traditional birth attendant	0.0
Village health worker	0.0
Relative / friend	36.7
Other/missing	0.9
No attendant	0.0
Total	100
Any skilled personnel	62.3
Percent delivered by C-section	13.2
Number of women who gave birth in preceding two years	132

Source : BMIS, 2010

**Table 10. Place of Delivery, Sarpang , (2010)**

Percent Distribution of Women age 15-49 With a Birth in Two Years Preceding the Survey by Place of Delivery.

Details	2010
Place of delivery	
Public sector health facility	61.5
Private sector health facility	0.0
Home	37.5
Other	1.0
Total	100.0
Delivered in health facility [1]	61.5
Number of women who gave birth in preceding two years	132

Source : BMIS, 2010

**Table 11. Health Infrastructures, Facilities and Personnel, Sarpang ,  
(2007 ~ 2010)**

Details	2007	2008	2009	2010
Number of hospitals	2	2	2	2
Number of BHUs	8	10	10	10
BHU grade I	0	0	0	0
BHU grade II	8	10	10	10
Number of ORCs	12	11	11	11
Number of indigenous units	0	0	0	0
Number of doctors	10	11	11	14
Number of hospital/BHU beds	70	70	90	100
Persons per doctor	10,011	9,240	10,889	9,140
Persons per hospital bed	42	46	48	68
Total morbidity attendance	100,112	101,638	119,783	127,963
Health assistants	11	12	18	25
Basic health workers	12	12	10	11
Sister and nurses	30	31	30	31
Technicians	30	31	30	31
Indigenous dungtsho	1	1	1	1
Indigenous compounders/Menpas				
Malaria workers	10	10	10	9
Village health workers	62	58	55	44
Number of children immunized				
Polio	968	975	739	716
DPTH	965	973	739	716
Measles	844	927	736	716
BCG	760	877	865	815
Others	1035	1101	708	690

Source: Dzongkhag Health Sector, Sarpang Dzongkhag

**Table 12. Hospital Admission and Average Length of Stay, Sarpang, (2007 ~ 2010)**

Average admission	2007	2008	2009	2010
Hospital admission				
Total	2684	3662	4208	4135
Patient days	12091	14131	17853	18165
Average days	4.5	3.9	4.2	4.4
BHU admission	272	249	332	260

Source : Annual Health Bulletin, MoH

**Table 13. Number of Surgeries, Sarpang , (2007 ~ 2010)**

Details	2007	2008	2009	2010
Surgeries				
Caesarian Section	89	94	139	164
General Abdominal	10	23	57	68
General Others	202	110	261	245
Orthopaedic extremities	49	91	18	15
Orthopaedic Others	51	63	17	2
Gynaecology	84	121	108	142
ENT	12	0	15	56
Eye	65	94	53	60

Source : Annual Health Bulletin, MoH

**Table 14. Number of Dental Services, Sarpang , (2007 ~ 2010)**

Dental Services	2007	2008	2009	2010
Prophylaxis	60	60	69	70
Scaling	15	9	4	2
Fillings	1665	2295	3008	3233
Extractions	1740	2238	2195	2157
Others	2969	5162	6073	7069

Source : Annual Health Bulletin, MoH

**Table 15: Number of Top Ten Morbidity, Sarpang , (2007~ 2010)**

Priority health problem/ Disease	2007	2008	2009	2010
Diarrhoea	3630	3073	4107	5,287
Conjunctivitis	3143	3157	1502	1,365
Dysentery	1453	1547	1723	1,685
Typhoid	59	102	82	76
Sexually transmitted disease, excluding HIV/AIDS	59	81	87	75
Diabetes	352	526	867	934
Tuberculosis	77	107	186	175
Early syphilis	1	11	5	1
Cholera	0	0	0	0
Tetanus	0	0	0	0
Diphtheria	0	0	0	0
Pertussis	0	0	0	0

Source : Dzongkhag Health Sector, Sarpang Dzongkhag

**Table 16. Child Disability, Sarpang , (2010)**

Child Disability	2010
Percentage of children aged 2-9 years with reported disability by type of disability	
Delay in sitting standing or walking	1.6
Difficulty seeing, either in the daytime or at night	1.9
Appears to have difficulty hearing	2.0
No understanding of instructions	1.5
Difficulty in walking moving, moving arms, weakness or stiffness	2.7
Have fits, become rigid, lose conciousness	1.1
Not learning to do things like other children his/her age	2.6
No speaking cannot be understood in words	3.5
Appears mentally backward, dull, or slow	2.2
Speech is not normal	3.5
Number of children aged 3-9 years	567
Cannot name at least one object	35.4
Number of children aged 2 years	69
Percentage of children 2-9 years of age with at least one reported disability*	16.6
Number of children aged 2-9 years	636

Source: BMIS, 2010

**Table 17. Nutritional Status of Children, Sarpang , (2010)**

Percentage of children under age 5 by nutritional status according to three anthropometric indices: weight for age, height for age, and weight for height.

Nutritional Status		2010
Weight for age:	% below -2 sd [1]	10.9
Weight for age:	% below -3 sd [2]	1.0
Weight for age:	Mean Z-Score (SD)	-0.7
Weight for age:	Number of children	347
Height for age:	% below -2 sd [3]	23.2
Height for age:	% below -3 sd [4]	6.4
Height for age:	Mean Z-Score (SD)	-1.2
Height for age:	Number of children	328
Weight for height:	% below -2 sd [5]	4.4
Weight for height:	% below -3 sd [6]	1.8
Weight for height:	% above +2 sd	5.0
Weight for height:	Mean Z-Score (SD)	0.0
Weight for height:	Number of children	329

Source: BMIS, 2010

**Table 18. Initial Breastfeeding, Sarpang , (2010)**

Percentage of Last-Born Children in the 2 Years Preceding the Survey Who Were Ever Breastfed, Percentage Who Were Breastfed Within One Hour of Birth and Within One Day of Birth, and Percentage Who Received a Prolactal Feed.

Initial Breastfeeding	2010
Percentage ever breastfed	99.1
Percentage who were first breastfed: Within one hour of birth	66.9
Percentage who were first breastfed: Within one day of birth	95.1
Percentage who received a prolactal feed	6.8
Number of last-born children in the two years preceding the survey	132

Source: BMIS, 2010

**Table 19. Duration of Breastfeeding, Sarpang , (2010)**

Median duration of any breastfeeding, exclusive breastfeeding, and predominant breastfeeding among children age 0-35 months.

Duration of Breastfeeding	2010
Median duration (in months) of	
Any breastfeeding	26.3
Exclusive breastfeeding	2.9
Predominant breastfeeding	4.2
Number of children age 0-35 months	209

Source: BMIS, 2010

**Table 20. Low Birth Weight Infants, Sarpang , (2010)**

Percentage of Last-Born Children in the 2 Years Preceding the Survey That are Estimated to Have Weighed Below 2500 Grams at Birth and Percentage of Live Births Weighed at Birth.

Low Birth Weight Infants	2010
Percent of live births	
Below 2500 grams	7.7
Weighed at birth	73.7
Number of live births in the last 2 years	132

Source: BMIS, 2010

**Table 21. Neonatal Tetanus Protection, Sarpang , (2010)**

Percentage of women age 15-49 years with a live birth in the last 2 years protected against neonatal tetanus.

Neonatal Tetanus Protection	2010
Percentage of Women Who Received at Least 2 Doses During Last Pregnancy	50.3
Percentage of women who did not receive two or more doses during last pregnancy but received	
2 doses, the last within prior 3 years	41.2
3 doses, the last within prior 5 years	0.0
4 doses, the last within prior 10 years	0.0
5 or more doses during lifetime	0.7
Protected against tetanus [1]	92.2
Number of women with a live birth in the last 2 years	132

Source: BMIS, 2010

**Table 22. Solid Fuel Use, Sarpang , (2010)**

Percentage Distribution of Household Members According to Type of Cooking Fuel Used by the Household, and Percentage of Household Members Living in Households Using Solid Fuels for Cooking.

Solid Fuel Use	2010
Percentage of household members in households using	
Electricity	29.1
Liquefied Petroleum Gas (LPG)	35.9
Kerosene	1.0
Coal	0.0
Wood	34.0
Straw/Shrubs/Grass	0.0
No food cooked in household	0.0
Other	0.0
Total	100.0
Solid fuels for cooking	34.0
Number of household members	4127

Source: BMIS, 2010



**Table 23. Use of Improved Water Sources, Sarpang , (2010)**

Percent distribution of household population according to main source of drinking water and percentage of household population using improved drinking water sources.

Water Sources	2010
Main source of drinking water	
Improved sources	
Piped into dwelling	30.1
Piped into compound	46.7
Piped to neighbor	14.3
Public outdoor tap	4.4
Protected well	0.0
Spring	1.2
Rainwater collection	0.0
Bottled water	0.0
Unimproved sources	
Unprotected well	0.1
Unprotected spring	1.3
Tanker-truck	0.0
Cart with samll tank/drum	0.1
Surface water (river,stream, dam, lake,pond,canal,irrigation channel)	1.8
Other	0.1
Total	100.0
Percentage using improved sources of drinking water	96.7
Number of household members	4127

Source: BMIS, 2010

**Table 24. Household Water Treatment, Sarpang , (2010)**

Percentage of Household Population by Drinking Water Treatment Method Used in the Household, and for Household Members Living in Households Where an Unimproved Drinking Water Source is Used, the Percentage Who are Using an Appropriate Treatment Method

Water Treatment	2010
Water treatment method used in the household	
None	11.5
Boil	83.7
Add bleach / chlorine	0.1
Strain through a cloth	7.5
Use water filter	16.0
Solar disinfection	0.0
Let it stand and settle	0.4
Other	0.0
Don't know	0.0
Number of household members	4127
Percentage of household members in households using unimproved drinking water sources and using an appropriate water treatment method [1]	80.1
Number of household members in households using unimproved drinking water sources	136

Source: BMIS, 2010

**Table 25. Time to Source of Drinking Water, Sarpang , (2010)**

Percent Distribution of Household Population According to Time to go to Source of Drinking Water, Get Water and Return, for Users of Improved and Unimproved Drinking Water Sources

Time to Source of Drinking Water	2010
Time to source of drinking water	
Users of improved drinking water sources	
Water on premises	93.9
Less than 30 minutes	2.6
30 minutes or more	0.2
Missing/DK	0.0
Users of unimproved drinking water sources	
Water on premises	1.1
Less than 30 minutes	0.7
30 minutes or more	1.6
Missing/DK	0.0
Total	100.0
Number of household members	4127

Source: BMIS, 2010

**Table 26. Types of Sanitation Facilities, Sarpang , (2010)**

Percent Distribution of Household Population According to Type of Toilet Facility Used by the Household

Time to Source of Drinking Water	2010
Type of toilet facility used by household	
Improved sanitation facility	
Flush toilet	1.1
Flush to septic tank(Without soak pit)	46.9
Flush to pit (latrine)	8.4
Flush to unknown place/not sure/DK where	0.0
Flush to septic tank (with soak pit)	7.0
Ventilated Improved Pit latrine (VIP)	0.9
Pit latrine with slab	1.0
Composing toilet	0.0
Unimproved sanitation facility	
Flush to somewhere else	0.4
Pit latrine without slab /open pit	30.6
Long drop latrine	1.0
Bucket	0.8
Other	0.0
Missing	0.0
Open defecation (no facility, bush, field)	
No facility,bush, field	1.9
Total	100.0
Number of household members	4127

Source: BMIS, 2010

**Table 27. Number of Schools, Institutions, Teachers and Students, Sarpang , (2008 ~ 2011)**

Details	CPS	PS	LSS	MSS	HSS	College	Pvt.	Other Inst.	NFE Centres	Daycare Centres	Total
2008											
Number of schools and institutions	9	n.a	4	2	2	n.a	2	1	38	n.a	57
Teaching staff											
Bhutanese	52	n.a	91	56	39	n.a	9	9	44	n.a	192
Male	42	n.a	45	32	25	n.a	5	8	34	n.a	182
Female	10	n.a	46	24	14	n.a	4	1	10	n.a	10
Non-Bhutanese	0	n.a	6	2	21	n.a	6	0	0	n.a	35
Male	0	n.a	1	2	18	n.a	4	0	0	n.a	25
Female	0	n.a	5	0	3	n.a	2	0	0	n.a	10
Temporary teachers											
Male	26	n.a	9	7	4	n.a	0	0	0	n.a	46
Female	14	n.a	6	5	3	n.a	0	0	0	n.a	28
Number of students	12	n.a	3	2	1	n.a	0	0	0	n.a	18
Male	1,938	n.a	2,850	2,148	1,217	n.a	650	135	1,042	n.a	10,745
Female	1,013	n.a	1,828	1,092	664	n.a	385	79	345	n.a	5,327
Student to teacher ratio	925	n.a	1,022	1,056	553	n.a	265	56	697	n.a	5,418
2009	37.3	n.a	38.7	38.4	20.3	n.a	43.3	15	23.7	n.a	
Number of schools and institutions	11	n.a	4	2	2	n.a	2	1	37	n.a	59
Teaching staff											
Bhutanese	61	n.a	111	74	46	n.a	n.a	11	41	n.a	344
Male	49	n.a	56	46	31	n.a	n.a	10	14	n.a	206
Female	12	n.a	55	28	15	n.a	n.a	1	27	n.a	138

Non-Bhutanese	0	n.a	6	3	21	n.a	n.a	0	0	n.a	30
Male	0	n.a	1	3	18	n.a	n.a	0	0	n.a	22
Female	0	n.a	5	0	3	n.a	n.a	0	0	n.a	8
Temporary teachers	2	n.a	2	0	0	n.a	n.a	0	0	n.a	4
Male	1	n.a	1	0	0	n.a	n.a	0	0	n.a	2
Female	1	n.a	1	0	0	n.a	n.a	0	0	n.a	2
Number of students	2,312	n.a	4,034	2,459	1,056	n.a	n.a	133	942	n.a	10,936
Male	1,187	n.a	1,957	1,243	563	n.a	n.a	79	290	n.a	5,319
Female	1,125	n.a	2,077	1,216	493	n.a	n.a	54	652	n.a	5,617
Student to teacher ratio	38	n.a	35	32	16	n.a	n.a	12	23	n.a	
2010											
Number of schools and institutions	13	n.a	4	2	2	na	2	1	42	n.a	66
Teaching staff											
Bhutanese	86	n.a	125	81	48	n.a	17	1	42	n.a	400
Male	68	n.a	77	51	30	n.a	15	8	14	n.a	263
Female	18	n.a	48	30	18	n.a	2	8	28	n.a	152
Non-Bhutanese	0	n.a	6	4	21	n.a	9	0	0	n.a	40
Male	0	n.a	5	4	18	n.a	8	0	0	n.a	35
Female	0	n.a	1	0	3	n.a	1	0	0	n.a	5
Temporary teachers	3	n.a	5	0	0	n.a	0	0	0	n.a	8
Male	2	n.a	2	0	0	n.a	0	0	0	n.a	4
Female	1	n.a	3	0	0	n.a	0	0	0	n.a	4
Number of students	2,522	n.a	4,203	2,451	1,181	n.a	605	90	942	n.a	11,994
Male	1,287	n.a	2,068	1,227	627	n.a	315	56	290	n.a	5,870
Female	1,235	n.a	2,135	1,224	554	n.a	290	34	652	n.a	6,124
Student to teacher ratio	29	n.a	32	29	17	n.a	23	11	22	n.a	

2011													
Number of schools and institutions		12	n.a	5	2	2	n.a	1	1	54	n.a	77	
Teaching staff													
Bhutanese		75	n.a	153	84	48	n.a	15	1	54	n.a	430	
Male		57	n.a	79	54	28	n.a	10	8	21	n.a	257	
Female		16	n.a	74	30	20	n.a	5	8	23	n.a	176	
Non-Bhutanese		0	n.a	6	5	23	n.a	10	0	n.a	n.a	44	
Male		0	n.a	1	4	19	n.a	10	0	n.a	n.a	34	
Female		0	n.a	5	1	4	n.a	0	0	n.a	n.a	10	
Temporary teachers		9	n.a	5	2	0	n.a	n.a	0	n.a	n.a	16	
Male		9	n.a	2	1	0	n.a	n.a	0	n.a	n.a	12	
Female		0	n.a	3	1	0	n.a	n.a		n.a	n.a	4	
Number of students		2063	n.a	4,816	2,397	1,226	n.a	311	90	914	n.a	11,817	
Male		1032	n.a	2,385	1,188	632	n.a	153	56	279	n.a	5,725	
Female		1031	n.a	2,431	1,209	594	n.a	158	34	635	n.a	6,092	
Student to teacher ratio		24	n.a	30	26	17	n.a	13	11	19	n.a		

Source: Dzongkhag Education Sector, Sarpang Dzongkhag.

**Table 28. School Enrolment by Grade and Sex, Sarpang , (2008~2011)**

Class	2008	2009	2010	2011
<b>Primary level</b>				
Total	6,579	7,065	7,282	7,112
Class PP	1,137	1,307	1,138	956
Class I	936	1,099	1,154	1,081
Class II	954	919	1,132	1,201
Class III	881	987	938	1,082
Class IV	1,011	925	1,150	998
Class V	875	959	869	975
Class VI	785	869	901	
819				
<b>Male</b>				
Total	3,300	3,513	3,599	3,548
Class PP	571	631	574	458
Class I	455	550	569	559
Class II	495	458	565	590
Class III	459	509	465	532
Class IV	512	490	550	504
Class V	422	465	444	507
Class VI	386	410	432	398
<b>Female</b>				
Total	3,279	3,552	3,583	3,564
Class PP	566	676	564	498
Class I	481	549	585	522
Class II	459	461	567	611
Class III	422	478	473	550
Class IV	499	435	500	494
Class V	453	494	425	468
Class VI	399	459	469	421
<b>Secondary level</b>				
Total	2,660	3,475	3,798	3,701
Class VII	931	750	901	911
Class VIII	709	747	679	840
Class IX	629	680	750	647
Class X	263	488	576	680
Class XI	61	445	395	273
Class XII	67	365	497	350



Male	1,412	1,766	1,935	1,836
Class VII	447	356	432	430
Class VIII	384	356	337	408
Class IX	369	360	361	318
Class X	135	267	308	330
Class XI	42	218	233	160
Class XII	35	209	264	190
Female	1,248	1,709	1,863	1,865
Class VII	484	394	469	481
Class VIII	325	391	342	432
Class IX	260	320	389	329
Class X	128	221	268	350
Class XI	19	227	162	113
Class XII	32	156	233	160

Source: Education Sector, Sarpang Dzongkhag

**Table 29. Student by Age-Group, Sex and by Level, Sarpang , (2008~2011)**

Details	2008	2009	2010	2011
<b>Students in primary school level (Class PP-VI)</b>				
Total				
Age < 6 years	109	292	1465	3
Age 6-12 years	4842	5301	4411	1,724
Age 13 & above	1706	1704	1332	401
Male				
Age < 6 years	76	156	711	2
Age 6-12 years	2378	2580	2197	854
Age 13 & above	903	853	692	215
Female				
Age < 6 years	33	136	754	1
Age 6-12 years	2464	2721	2214	870
Age 13 & above	803	851	640	186
<b>Student in LSS level (Class VII-VIII)</b>				
Total				
Age < 13 years	57	77	260	3,052
Age 13-14 years	344	419	413	966
Age 15 & above	902	1004	850	816
Male				
Age < 13 years	28	27	114	1,480
Age 13-14 years	165	183	195	483
Age 15 & above	477	507	419	420
Female				
Age < 13 years	29	50	146	1,572
Age 13-14 years	179	236	218	483
Age 15 & above	425	497	431	396
<b>Students in MSS level (Class IX-X)</b>				
Total				
Age < 15 years	132	234	44	1,464
Age 15-16 years	647	332	184	513
Age 17 & above	356	580	655	436
Male				
Age < 15 years	67	125	20	727
Age 15-16 years	322	177	87	241
Age 17 & above		331	355	219

Female				
Age < 15 years	65	109	24	737
Age 15-16 years	325	155	97	272
Age 17 & above		249	300	217
Students in HSS level (Class XI-XII)				
Total				
Age < 17 years	157	104	117	327
Age 17-18 years	311	365	405	626
Age 19 & above	247	735	798	490
Male				
Age < 17 years	73	52	58	148
Age 17-18 years	188	168	193	307
Age 19 & above	163	442	480	300
Female				
Age < 17 years	84	52	59	179
Age 17-18 years	123	197	212	319
Age 19 & above	84	293	318	190

Source : Education Sector,Sarpang Dzongkhag

**Table 30. Literacy Among Young Women, Sarpang , (2010)**

Literacy Among Young Women	2010
Percentage literate	61.6
Percentage not known	0.3
Number of women age 15-24 years	314

Source: BMIS, 2010

**Table 31. School Readiness, Sarpang , (2010)**

Percentage of children attending first grade of primary school who attended pre-school the previous year.

School Readiness	2010
Percentage of children attending first grade who attended preschool in previous year	0.0
Number of children attending first grade of primary school	96.0

Source: BMIS, 2010

**Table 32. Primary School Entry, Sarpang , (2010)**

Percentage of Children of Primary School Entry Age Entering Grade 1

Primary School Entry	2010
Percentage of children of primary school entry age entering grade 1	77.5
Number of children of primary school entry age	76.0

Source: BMIS, 2010

**Table 33. Children Reaching Last Grade of Primary School, Sarpang , (2010)**

Percentage of children entering first grade of primary school who eventually reach the last grade of primary school (Survival rate to last grade of primary school)

Details	2010
Percent attending grade 1 last year who are in grade 2 this year	100.0
Percent attending grade 2 last year who are attending grade 3 this year	100.0
Percent attending grade 3 last year who are attending grade 4 this year	100.0
Percent attending grade 4 last year who are attending grade 5 this year	96.4
Percent attending grade 5 last year who are attending grade 6 this year	95.2
Percent who reach grade 6 of those who enter grade 0	88.8

Source: BMIS, 2010

**Table 34. Education Gender Parity, Sarpang , (2010)**

Education gender parity Ratio of adjusted net attendance ratios of girls to boys, in primary and secondary school

Education Gender Parity	2010
Primary school adjusted net attendance ratio (NAR), girls	96.1
Primary school adjusted net attendance ratio (NAR), boys	95.3
Gender parity index (GPI) for primary school adjusted NAR	1.01
Secondary school adjusted net attendance ratio (NAR), girls	58.5
Secondary school adjusted net attendance ratio (NAR), boys	59.3
Gender parity index (GPI) for secondary school adjusted NAR	0.99

Source: BMIS, 2010

**Table 35. Summary of Crime Reports by Nature of Crime, Sarpang ,  
(2009 ~ 2010)**

Nature of Crime	(Incident)	
	2009	2010
Attempt, aiding and abetting, solicitation and criminal conspiracy	n.a	n.a
Homicide	n.a	n.a
Assault,battery and related offences	n.a	n.a
Kidnapping and related offences	n.a	n.a
Sexual offence	n.a	n.a
Offence against infant,child,mentally dissabled and incompetent person	n.a	n.a
Arson and related offences	n.a	n.a
Burglary, trespass and related offences	n.a	n.a
Larceny,robbery, armed robbery and related offences	n.a	n.a
Money laundering and smuggling	n.a	n.a
Embezzlement and bribery	n.a	n.a
Forgery and related offences	n.a	n.a
Defamation and related offences	n.a	n.a
Treason,terrorism and related offences	n.a	n.a
Offences against cultural and national heritage	n.a	n.a
Offences against judicial authority	n.a	n.a
Prostitution and related offences	n.a	n.a
Offences against the public welfare	n.a	n.a
Offences related to public and civic duties	n.a	n.a
Offences related to public order and tranquillity	n.a	n.a
Offences against privacy	n.a	n.a
Computer offences	n.a	n.a
Offences related to firearms and weapons	n.a	n.a
Offences related to protected species,controlled and other harmful substances	n.a	n.a
Motor vehicle offences	n.a	n.a
Others	n.a	n.a
Total crimes	n.a	n.a

Source: Royal Bhutan Police, Sarpang Dzongkhag

**Table 36. Monthly Motor Vehicle Accidents, Sarpang , (2009~ 2010)**

Month	2009	2010
January	n.a	14
February	n.a	9
March	n.a	12
April	n.a	7
May	n.a	11
June	n.a	9
July	n.a	5
August	n.a	4
September	n.a	4
October	n.a	6
November	n.a	8
December	n.a	7
Total	n.a	96

Note : Data for motor vehicle accidents is only for Gelephu Area.

Source: RSTA, Sarpang Dzongkhag

**Table 37. Causes of Motor Vehicle Accidents, Sarpang , (2009~2010)**

Details	2009	2010
Mechanical fault	10	13
Drunk driving	3	8
Bad weather/Road	5	9
Without licence	3	10
Unknown causes	10	0
Other causes (Human Behaviour, speed )	3	56
All causes	34	96

Note : Data for motor vehicle accidents is only for Gelephu Area.

Source: RSTA, Sarpang Dzongkhag

**Table 38. Attitudes Toward Domestic Violence, Sarpang , (2010)**

Details	2010
Percentage of women age 15-49 years who believe a husband is justified in beating his wife/partner	
If goes out without telling him	46.4
If she neglects the children	65.1
If she argues with him	29.0
If she refuses sex with him	16.0
If she burns the food	13.3
For any of these reasons	70.6
Number of women age 15-49 years	924

Source: BMIS, 2010

**Table 39. Land Area and Damages Caused by Types, Sarpang ,(2007 ~ 2010)**

Detials	2007	2008	2009	2010
Dzongkhag area (Sq. Km)	2,288	1,660.28	1,660.28	1,660.28
Total cultivated land (Acres)1	n.a	n.a	14,619	14,619
Damages caused by landslides 2	n.a	n.a		
Farmland (acres)	n.a	n.a	85.6	5.76
Houses (Number)	n.a	n.a	0	0
Roads (Km)	n.a	n.a	0	0
Damages caused by floods2	n.a	n.a		
Farmland (acres)	n.a	n.a	15.85	2.15
Houses (Number)	n.a	n.a	0	0
Roads (Km)	n.a	n.a	0	0
Crops affected by drought (acres)	n.a	n.a	0	0
Crops damaged by wild animals (acres)	n.a	n.a	169.44	56.45
Incidence of earthquake (Number of cases reported)2	n.a	n.a	2	1
Houses damaged by earthquakes (Number)	n.a	n.a	5	15
Number of forest fires3	n.a	n.a	3	0
Acreage destroyed by forest fires	n.a	n.a	11	0
Acreage of reforestation3	n.a	n.a	47.5	47.50
Houses/structures damaged by fires (Number)3	n.a	n.a	0	0

Source: 1Agriculture Sector, 2Environment Sector, 3 Forest Sector, Sarpang Dzongkhag



**Table 40. Average Monthly Temperature (Degree Centigrade), Sarpang, (2010)**

Month/ Temperature	(Degree Celsius)		
	Maximum	Minimum	Average
January	22	12	17
February	23	14	19
March	26	19	22
April	26	20	23
May	27	21	24
June	28	21	25
July	28	23	25
August	29	23	26
September	28	22	25
October	28	21	25
November	25	19	22
December	23	15	19
Annual	26	19	23

Source: SYB, NSB

**Table 41. Average Monthly Rainfall, Sarpang (2010)**

Month/ Monthly Rainfall	(Millimeter)		
	Stations		
	Surey	Bhur	Sarpang
January	0	0	0
February	2	0	7
March	0	0	0
April	0	0	0
May	238	255	321
June	279	1241	669
July	702	1622	867
August	695	1752	531
September	554	825	445
October	49	62	60
November	5	21	12
December	0	1	0
Annual total rainfall	2523	5779	2911

Source: SYB, NSB

**Table 42. Percentage of Forest Coverage, Number of Protected Spring and Lakes, Sarpang , (2010)**

Details	2010
Forest coverage (%) <sup>2</sup>	83.02
Number of snow fall at Dzongkhag headquarter	N.A
Number of Protected spring water sources <sup>1</sup>	n.a
Number of Lakes <sup>1</sup>	n.a

Source: 1Dzongkhag Forest Section, 2Tenth Plan Documents, GNHC

**Table 43. Disposal of Childs Faeces, Sarpang , (2010)**

Percent distribution of children age 0-2 years according to place of disposal of child's faeces, and the percentage of children age 0-2 years whose stools were disposed of safely the last time the child passed stools

Disposal of Childs Faeces	2010
Place of disposal of child's faeces	
Child used toilet / latrine	29.1
Put / Rinsed into toilet or latrine	43.1
Put / Rinsed into drain or ditch	18.9
Thrown into garbage (solid waste)	1.2
Buried	0.0
Left in the open	5.8
Other	1.9
Total	100.0
Percentage of children whose stools were disposed of safely	72.2
Number of children age 0-2 years	209

Source: BMIS 2010

**Table 44. Parliamentary and Local Government Representatives, Sarpang , (2008 & 2011)**

Details	2008	2011
Local governance (Number)		
Parliamentarians	3	3
Male	3	3
Female	0	0
Gups	12	12
Male	12	12
Female	0	0
Total gewog tshogpas <sup>1</sup>	90	59
Male	90	54
Female	0	5
Total Mangmis <sup>1</sup>	12	12
Male	12	12
Female	0	0
DYT members <sup>2</sup>	24	24
Male	24	24
Female	0	0
GYT members <sup>1</sup>	114	83
Male	114	78
Female	0	5
Polling stations <sup>2</sup>	38	61
Eligible voters (18 years and above) <sup>2</sup>	21,823	23,132
Male	11,086	12,216
Female	10,737	10,916
% of Voters turnout during election	n.a	n.a
Male	n.a	n.a
Female	n.a	n.a
Total election staff in Dzongkhag	3	4
Male	2	2
Female	1	2

Note: two Tshogpa post is vacant.

Source: <sup>1</sup>Gewog Administration, <sup>2</sup>Election Sector, Sarpang Dzongkhag.

**Table 45. Parliamentary election and Local Government Election Expenditures, Sarpang , (2008 & 2011)**

Details	Amount (Nu)
2008	n.a
Parliamentary election	n.a
National council	n.a
National assembly	n.a
2011	n.a
Local government Election	n.a
Gup	n.a
Mangmi	n.a
Tsogpa	n.a

Source: Election Office, Sarpang Dzongkhag

**Table 46. Government Finance Expenditures, Sarpang, (2009 ~ 2011)**

Details	2009			2010		
	Expenditures			Expenditures		
Sectors	Current	Capital	Total	Current	Capital	Total
Civil	n.a	n.a	n.a	n.a	n.a	n.a
Agriculture	n.a	n.a	n.a	n.a	n.a	n.a
Livestock	n.a	n.a	n.a	n.a	n.a	n.a
Forestry	n.a	n.a	n.a	n.a	n.a	n.a
Education	n.a	n.a	n.a	n.a	n.a	n.a
Health	n.a	n.a	n.a	n.a	n.a	n.a
Urban Development & Housing	n.a	n.a	n.a	n.a	n.a	n.a
Roads	n.a	n.a	n.a	n.a	n.a	n.a
Bhutan post	n.a	n.a	n.a	n.a	n.a	n.a
Telecommunication	n.a	n.a	n.a	n.a	n.a	n.a
Power	n.a	n.a	n.a	n.a	n.a	n.a
Trade & industry	n.a	n.a	n.a	n.a	n.a	n.a
Total	n.a	n.a	n.a	n.a	n.a	n.a
Total plan outlay	n.a	n.a	n.a	n.a	n.a	n.a

Source: Dzongkhag Administration, Sarpang

**Table 47. Dzongkhag 9th and 10th Five Year Plan Outlays, Sarpang**

Sectors	9 FYP		10 FYP	
	Current	Capital	Current	Capital
Civil	94.051	16.45	n.a	34.00
Agriculture	22.043	20.403	n.a	134.682
Livestock	20.047	11.574	n.a	17.109
Forestry	3.694	4.07	n.a	19.960
Education	158.164	154.358	n.a	
Health	97.434	54.51	n.a	81.914
Urban development & housing	21.802	150.125	n.a	199.71
Roads	8.737	0.000	n.a	n.a
Bhutan post	0.000	0.000	n.a	n.a
Telecommunication	0.000	0.000	n.a	n.a
Power	61.006	0.000	n.a	n.a
Trade & industry	0.000	2.400	n.a	n.a
Total	486.978	413.890	n.a	487.375
Total plan outlay	486.978	413.890	n.a	487.375

Source:Dzongkhag Administration, Sarpang

**Table 48. Dzongkhag 9th and 10th Five Year Plan Expenditure, Sarpang**

Sectors	( in million Nu.)			
	9 FYP		10 FYP	
	Current	Capital	Current	Capital
Civil	n.a	n.a	n.a	n.a
Agriculture	n.a	n.a	n.a	n.a
Livestock	n.a	n.a	n.a	n.a
Forestry	n.a	n.a	n.a	n.a
Education	n.a	n.a	n.a	n.a
Health	n.a	n.a	n.a	n.a
Urban development & housing	n.a	n.a	n.a	n.a
Roads	n.a	n.a	n.a	n.a
Bhutan post	n.a	n.a	n.a	n.a
Telecommunication	n.a	n.a	n.a	n.a
Power	n.a	n.a	n.a	n.a
Trade & industry	n.a	n.a	n.a	n.a
Total	n.a	n.a	n.a	n.a
Total plan expenditure	n.a	n.a	n.a	n.a

Source:Dzongkhag Administration, Sarpang

**Table 49. Gewog 9th and 10th Five Year Plan Outlays, Sarpang**

( In million Nu.)

Sectors	9 FYP		10 FYP	
	Current	Capital	Current	Capital
Agriculture	0.000	21.719	n.a	95.882
Livestock	0.000	0.667	n.a	4.559
Forest	0.000	0.471	n.a	14.46
Education	0.000	8.394	n.a	na
Health	0.000	2.184	n.a	20.914
Roads	0.000	2.637	n.a	16.38
Gewog Administration	14.501	0.000	n.a	18.450
Total	14.501	36.072	n.a	170.645

Source:Planning Unit, Sarpang Dzongkhag

**Table 50. Gewog 9th and 10th Five Year Plan by Expenditures, Sarpang**

( In million Nu.)

Sectors	9 FYP		10 FYP	
	Current	Capital	Current	Capital
Agriculture	0.000	14.527	n.a	n.a
Livestock	0.000	0.737	n.a	n.a
Forest	0.000	0.364	n.a	n.a
Education	0.000	6.641	n.a	n.a
Health	0.000	1.295	n.a	n.a
Roads	0.000	1.493	n.a	n.a
Gewog Administration	11.436		n.a	n.a
Total	11.436	25.057	n.a	n.a

Source:Dzongkhag Administration, Sarpang

**Table 51. Employed Persons by Age, Sex and Area of Residence, Sarpang ,  
(2008 ~ 2011)**

Details	(Number)			
	2008	2009	2010	2011
Total	n.a	n.a	16200	19200
Male	n.a	n.a	8900	10600
Female	n.a	n.a	7300	8600
Rural Total	n.a	n.a	10100	14600
Male	n.a	n.a	5100	7700
Female	n.a	n.a	5000	6900
Urban Total	n.a	n.a	6100	4700
Male	n.a	n.a	3800	3000
Female	n.a	n.a	2300	1700

Source : Labour Force Survey, MoLHR

**Table 52. Employment by Industries, Age Group and Sex, Sarpang ,  
(2009 ~ 2011)**

Details	2009	2010	2011
Total labour force (Number)	n.a	17,400	20,100
Total employed (%)	n.a	92.5	95.50
Male	n.a	55.3	55.21
Female	n.a	45.3	44.79
Unemployment rate	n.a	7.5	4.50
Total employed in Agriculture (%)	n.a	n.a	n.a
Male	n.a	n.a	n.a
Female	n.a	n.a	n.a
Total employed in Industries (%)	n.a	n.a	n.a
Male	n.a	n.a	n.a
Female	n.a	n.a	n.a
Total employed in Services (%)	n.a	n.a	n.a
Male	n.a	n.a	n.a
Female	n.a	n.a	n.a
Total unemployed by area (%)	n.a	n.a	n.a
Urban	n.a	n.a	n.a
Rural	n.a	n.a	n.a
Total un-employed by education (%)	n.a	n.a	n.a
Total unemployed grade XII and above	n.a	n.a	n.a
Total unemployed below grade XII	n.a	n.a	n.a
Total under employed (%)	n.a	n.a	n.a
Employed by age-group (%)	n.a	n.a	n.a
15-17 years	n.a	n.a	n.a
18-24 years	n.a	n.a	n.a
25-64 years	n.a	n.a	n.a
65 years and above	n.a	n.a	n.a
Unemployed by age-group (%)	n.a	n.a	n.a
15-17 years	n.a	n.a	n.a
18-24 years	n.a	n.a	n.a
25-64 years	n.a	n.a	n.a
65 years and above	n.a	n.a	n.a
Labor force participation rate (%)	n.a	66.2	64.4
Male participation rate	n.a	78.8	72.8
Female participation rate	n.a	59.7	56.5

Source : Labour Force Survey, MoLHR



**Table 53. Child Labour, Sarpang , (2010)**

Percentage of Children by Involvement in Economic Activity and Household Chores During the Past Week, According to Age Groups, and Percentage of Children Age 5-14 Involved in Child Labour

Child labour	2010
Percentage of children age 5-11 involved in	
Economic activity	
Working outside household	
Paid work	0.1
Unpaid work	0.1
Working for family business	35.0
Economic activity for at least one hour	35.0
Household chores less than 28 hours	57.0
Household chores for 28 hours or more	0.0
Child labour	35.0
Number of children age 5-11	637
Percentage of children age 12-14 involved in	
Economic activity	
Working outside household	
Paid work	1.3
Unpaid work	0.7
Working for family business	49.9
Economic activity less than 14 hours	46.5
Economic activity for 14 hours or more	4.5
Household chores less than 28 hours	85.2
Household chores for 28 hours or more	0.0
Child labour	4.5
Number of children age 12-14	280.0
Total child labour [1]	25.6
Number of children age 5-14 years	917.0

Source: BMIS,2010

**Table 54. Child Labour and School Attendance, Sarpang , (2010)**

Percentage of children age 5-14 years involved in child labour who are attending school, and percentage of children age 5-14 years attending school who are involved in child labour

Child Labour and School Attendance	2010
Percentage of children involved in child labour	25.6
Percentage of children attending school	86.9
Number of children age 5-14 years	917.0
Percentage of child labourers who are attending school	89.5
Number of children age 5-14 years involved in child labour	235.0
Percentage of children attending school who are involved in child labour	26.4
Number of children age 5-14 years attending school	797.0

Source: BMIS,2010

**Table 55. Agriculture Production and Average Prices by COMmodities, Sarpang, (2007 ~ 2010)**

Details	2007	2008	2009	2010
<b>Paddy</b>				
Area (Acres)	8305	1776	5108	5,185.41
Production (MT)	6238000	7197000	4157000	4,512.19
Price per Kg(Nu.)	n.a	n.a	40	45
<b>Maize</b>				
Area (Acres)	7886	2681	5527	4,238.87
Production (MT)	4991000	7057000	3403000	2,612.29
Price per Kg(Nu.)	n.a	n.a	15	18
<b>Wheat</b>				
Area (Acres)	483	19	22	7.95
Production (MT)	184000	36000	4000	3.26
Price per Kg(Nu.)	n.a	n.a	20	18
<b>Barley</b>				
Area (Acres)	n.a	5	7	6.85
Production (MT)	n.a	9540	5000	2.12
Price per Kg(Nu.)	n.a	n.a	n.a	n.a
<b>Buckwheat</b>				
Area (Acres)	1004	132	310	50.58
Production (MT)	268000	217000	82000	26.59
Price per Kg(Nu.)			15	16

Millet				
Area (Acres)	3415	572	1666	897.57
Production (MT)	1680000	862540	803000	595.12
Price per Kg(Nu.)	n.a	n.a	14	15
Fruits				
Apples				
Number of fruit bearing trees	N.A	N.A	N.A	N.A
Production (Kg)	N.A	N.A	N.A	N.A
Price per Kg(Nu.)	N.A	N.A	N.A	N.A
Oranges/ Mandarin				
Number of fruit bearing trees	352005	1531910	193100	169332
Production (Kg)	12746000	6161900	8430000	7173000
Price per Kg(Nu.)	n.a	n.a	30	45
Banana				
Number of fruit bearing trees	50313	27260	38761	33540
Production (Kg)	780000	467900	588000	511000
Price per Dozen(Nu.)	n.a	n.a	25	30
Pear				
Number of fruit bearing trees	2552	8800	933	970
Production (Kg)	51000	244300	95000	65000
Price per Kg(Nu.)	n.a	n.a	n.a	20
Plum				
Number of fruit bearing trees	2032	2200	276	284
Production (Kg)	140000	112000	6000	9000
Price per Kg(Nu.)	n.a	n.a	20	20
Areca Nut				
Production (MT)	1489	1288	1708	2103
Production (Nu.)	n.a	n.a	n.a	n.a
Price per 80 Piece/ Pon(Nu.)	n.a	n.a	180	210
Vegetables and Spices				
Potato				
Production (kg)	233000	823550	101000	21000
Production (Nu.)			2020000	420000
Price per Kg(Nu.)	n.a	n.a	20	20
Chili				
Production (kg)	187000	188350	35000	51000
Production (Nu.)			2275000	3570000
Price per Kg(Nu.)	n.a	n.a	65	70

Onion				
Production (kg)	n.a	56790	10000	9000
Production (Nu.)			300000	270000
Price per Kg(Nu.)	n.a	n.a	30	30
Cabbage				
Production (kg)	75000	34730	19000	29000
Production (Nu.)			380000	870000
Price per Kg(Nu.)	n.a	n.a	20	30
Cauliflower				
Production (kg)	51000	17800	11000	10000
Production (Nu.)			440000	400000
Price per Kg(Nu.)	n.a	n.a	40	50
Asparagus				
Production (MT)	n.a	n.a	n.a	0.19
Production (Nu.)	n.a	n.a	n.a	n.a
Price per bundle (Nu.)	n.a	n.a	n.a	n.a
Tomato				
Production (Kg)	180000	71260	34000	21000
Production (Nu.)			1020000	840000
Price per Kg(Nu.)	n.a	n.a	30	40
Carrot				
Production (Kg)	1000	9300	4000	5000
Production (Nu.)	n.a	n.a	n.a	250000
Price per Kg(Nu.)	n.a	n.a	n.a	50
Egg Plant (Brinjal)				
Production (Kg)	98000	na	14000	8000
Production (Nu.)			280000	160000
Price per Kg(Nu.)	n.a	n.a	20	20
Raddish				
Production (Kg)	247000	300620	154000	85000
Production (Nu.)			3080000	1700000
Price per Kg(Nu.)	n.a	n.a	20	20
Ginger				
Production (Kg)	707000	347680	513180	390000
Production (Nu.)			20527200	15600000
Price per Kg(Nu.)	n.a	n.a	40	40
Cardamom				
Production (Kg)	n.a	342600	2150	9000
Production (Nu.)	n.a	n.a	n.a	n.a
Price per Kg(Nu.)	n.a	n.a	n.a	n.a

Garlic				
Production (Kg)	31000	304300	9000	4000
Production (Nu.)	n.a	n.a	n.a	n.a
Price per Kg(Nu.)	n.a	n.a	n.a	n.a
Oil seeds and legumes				
Lentils				
Production (Kg)	n.a	n.a	4000	n.a
Production (Nu.)	n.a	n.a	n.a	n.a
Price per Kg(Nu.)	n.a	n.a	n.a	n.a
Mustards				
Production (Kg)	386000	290940	115000	91000
Production (Nu.)	n.a	n.a	n.a	n.a
Price per Kg(Nu.)	n.a	n.a	n.a	n.a
Beans				
Production (Kg)	107000	173220	53000	45000
Production (Nu.)			2120000	1800000
Price per Kg(Nu.)	n.a	n.a	40	40

Note: Price data is from market.

Source: Agriculture Sector, Sarpang Dzongkhag

**Table 56. Agriculture Infrastructures and Other Facilities , Sarpang , (2007 ~ 2010)**

Details	2007	2008	2009	2010
Irrigation for agriculture				
Number of irrigation channels	n.a	n.a	282	282
Functional	n.a	n.a	256	256
Non-Functional	n.a	n.a	26	26
Total length of channels (Km)	n.a	n.a	380.70	380.70
Area covered by irrigation (Acres)	n.a	n.a	6844.2	6844.2
Number of households benefitted	n.a	n.a	3005	3005
Number of food processing units	n.a	n.a	n.a	n.a
Number of agriculture mills <sup>1</sup>	n.a	n.a	60	82
Number of livestock product processing units	n.a	n.a	2	2
Number of farmer association/groups	n.a	n.a	44	32
Agriculture	n.a	n.a	17	7
Livestock	n.a	n.a	14	10
Forestry	n.a	n.a	13	15
Number of power tillers	n.a	n.a	34	44

Source: Agriculture Sector, Sarpang Dzongkhag

**Table 57: Livestock Population by Types, Sarpang, (2007~2010)**

Details	2007	2008	2009	2010
Livestock (Number)				
Cattle				
Local breed	15,908	16,005	15,756	17,596
Male	6,283	6,272	6,859	7,618
Female	9,625	9,733	8,897	9,978
Improved breed	3,587	3,115	4,203	4,670
Male	1,604	822	1,503	1,159
Female	1,983	2,293	2,700	3,511
Mithun	1,087	1,444	1,432	10
Bufallo	237	204	149	124
Male	63	76	37	41
Female	174	128	112	83
Horse	308	286	385	407
Local breed	304	130	370	398
Improved breed	4	156	15	9
Yak				
Male	N.A	N.A	N.A	N.A
Female	N.A	N.A	N.A	N.A
Sheep	600	714	704	780
Local breed	600	714	704	780
Improved breed	0	0	0	0
Pig	1,679	1,177	967	1,033
Local breed	805	934	771	721
Improved breed	874	243	196	312
Poultry	27,041	22,969	31,307	55,371
Local breed	16,805	13,441	16,925	20,287
Improved breed	10,236	9,528	14,382	35,084
Goat	3,046	3,269	4,469	5,022

Source:Livestock Sector, Sarpang Dzongkhag

**Table 58: Livestock Productions, Sarpang , (2007~2010)**

Details	2007	2008	2009	2010
Livestock products				
Fresh Milk (Liters)	891,015	995,491	2,042,979	1,438,714.5
Butter (Kg)		35,542	36,240	84,911
48,745.5				
Fresh Cheese (Kg)	17,678	178,076	117,579.4	96,087.8
Processed cheese (kg)	0	0	0	0
Eggs (Dozen)	104,797	157,025	178,259	399,001.6
Fish (Kg)		5,551	7,218	3,543
5,708				
Beef (Kg)		39,006	154,647	3,007
20,700				
Pork (Kg)		62,101	31,577	12,399
24,294				
Yak Meat (Kg)	N.A	N.A	N.A	N.A
Mutton (Kg)	20,055	18,861	7,250	10,819
Honey (Gm)	0	0	0	0
Chicken (Kg)	37,174	29,554	18,399	25,888.5

Source: Livestock Sector, Sarpang, Dzongkhag

**Table 59. Forestry Production, Sarpang , (2007 ~ 2009)**

Details	2007	2008	2009
Wood Forest Product <sup>1</sup>			
Log Form (Cft)	n.a	116,419	90,479
Fire wood (Cubic metres)	n.a	4,261	4,904
Flag Poles (Number)	n.a	163	322
Shinglap (Number of trees)	n.a	n.a	n.a
Cham (Number of trees)	n.a	20	34
Tsim (Number of trees)	n.a	1,729	1,460
Non-Wood Forest Product <sup>2</sup>			
Mushroom (Kg)	0	0	0
Mushroom (Nu.)	0	0	0
Medicinal and Aromatic plants (Kg)	0	0	0
Cordyceps (Kg)	0	0	0
Cordyceps (Nu.)	0	0	0
Sand (Truck load)	n.a	4,462	6,552
Stones (Truck load)	n.a	7,058	8,075
Bamboo (Number)	n.a	5,503	4,611
Cane (Bundles)	n.a	107	15
Lemon grass (Kg)	n.a	n.a	n.a
Mining Sites (Number)	n.a	1	1
Quarry Sites	n.a	0	0
Municipal Waste Disposal Sites	n.a	1	1
Environmental Clearance Issued	n.a	15	20

Source:<sup>1</sup>Divisional Forest Office, Sarpang



**Table 60. Electricity Generating Stations and Capacities, Sarpang , (2007 & 2009)**

Stations	2007-2008			2008-2009		
	Installed capacity (no.x MW)	Generating capacity (MW)	Peak generation (MU)	Installed capacity (no.x MW)	Generating capacity (MW)	Peak generation (MU)
List the Name						
Surey	0.070	0.070	0.00	0.00	Dicommissioned	
Diesel generation stations	n.a	n.a	n.a	n.a	n.a	n.a
Other diesel stations	n.a	n.a	n.a	n.a	n.a	n.a

Source : Statistical Yearbook, 2010, NSB

**Table 61. Number of Households by Area, Sarpang , (2009 ~ 2011)**

Details	2009	2010	2011
Total number of household in Urban	2,590	2,645	2,701
Total number of household in Rural	5,397	5,512	5,628

Source: PHCB, 2005

**Table 62. Number of Building Permits issued by Towns, Sarpang , (2009 ~ 2011)**

New buildings	2009	2010	2011
Gelephu	n.a	n.a	n.a
Sarpang	n.a	n.a	n.a

Source: Dzongkhag Municipal, Sarpang Dzongkhag

**Table 63. Number of Establishment by Type and Size, Sarpang , (2009 ~ 2011)**

Details	2009	2010	2011
Industries by type (Number)			
Agro based	47	48	53
Forestry based	33	35	38
Mineral based	6	8	14
Others	1,154	1,328	1,527
Industries by scale (Number)			
Large	5	6	10
Medium	6	7	8
Small	48	54	76
Cottage	1,193	1,299	1,305
Contract firms (Number)			
Large	2	3	5
Medium	14	19	
Small	83	146	208

Source: Regional Trade Office, Sarpang

**Table 64. Number of Wholesale, Retail Trade and Industrial Licenses Issued, Sarpang , (2007 ~ 2011)**

Details	(Number)				
	2007	2008	2009	2010	2011
Trade and Industries					
Micro & retail trade licences issued	n.a	n.a	273	277	254
Micro & retail trade licences in operation	n.a	n.a	258	269	252
Wholesale trade licences issued	n.a	n.a	3	5	9
Wholesale trade licences in operation	n.a	n.a	1	4	8
Services licences issued	n.a	n.a	179	174	197
Services licences in operation	n.a	n.a	179	147	197
Manufacturing licenses issued	n.a	n.a	9	5	16
Manufacturing licenses in operation	n.a	n.a	9	5	16

Source: Regional Trade Office, Sarpang

**Table 65. Number of Public Transport and Facilities, Sarpang , (2007 ~ 2011)**

Details	(Number)				
	2007	2008	2009	2010	2011
Public Service Transport					
Bus	4	5	5	6	8
Taxi	30	55	60	97	115
Motor vehicle registration					
Heavy	162	163	169	223	246
Medium	7	11	19	55	66
Small	572	671	776	957	1,028
Two wheeler	795	812	850	916	928
Auto Mobile workshop <sup>3</sup>	4	5	6	6	6
Bus stations	1	1	1	1	1

Source: RSTA Regional Office, Sarpang

**Table 66: Roads and Bridges, Sarpang , (2007~2011)**

Details	2007	2008	2009	2010	2011
Roads (Length in Km)					
Farm roads <sup>1</sup>	54.75	78.4	79.9	96.13	222.58
Feeder roads <sup>2</sup>	38.5	38.5	38.5	38.5	38.5
Forest roads <sup>1</sup>	93.3	93.3	93.3	93.3	93.3
Highways/Dzongkhag roads	123.4	123.4	123.4	123.4	123.4
Bridges (Number)					
Suspension bridge <sup>1</sup>	18	21	24	24	24
Suspended <sup>1</sup>	2	2	2	2	2
Bailey bridges <sup>2</sup>	3	3	3	3	3
Traditional bridges <sup>1</sup>	0	0	0	0	0

Source: <sup>1</sup>Dzongkhag Engineering Section,<sup>2</sup>Department of Roads, Sarpang

**Table 67. Telecommunications, Sarpang , (2007 ~ 2011)**

(Number)

Telecommunications	2007	2008	2009	2010	2011
Households with fixed telephone connections	n.a	n.a	1,141	1,121	1,136
Tashi cell users	n.a	n.a	n.a	n.a	n.a
B.mobile users	n.a	n.a	n.a	n.a	28,000
Community information centres	1	1	2	5	8
Gewogs accessible to mobile services	7	9	11	12	12
Households with internet access	n.a	n.a	n.a	n.a	n.a
Bhutan post office	2	2	2	2	2

Source: Gewog Administration Office &amp; Regional Office, Sarpang Dzongkhag.

**Table 68. Number of Establishment in Bnking and Finance, Sarpang , (2009 ~ 2011)**

(number)

Number of establishments	2009	2010	2011
RICBL	1	1	1
BDBL	1	1	2
BNB	1	1	1
Druk PNB	0	0	0
T Bank	0	0	0
Bhutan insurance limited	1	1	1
BOB	2	2	2

Source: Financial Institutions, Sarpang Dzongkhag

**Table 69. Number of account holders in Banks, Sarpang , (2010)**

Number of facilities	Number of account holders (2010)				
	Loan	savings	current	fixed deposit	recurring deposit
RICB	181	0	0	0	0
BDBL	1175	1119	3	23	47
BNB	1346	4046	127	269	0
PNB	0	0	0	0	0
T Bank	0	0	0	0	0
Bhutan insurance limited	0	0	0	0	0
BOB	n.a	n.a	0	n.a	n.a

Source: Financial Institutions, Sarpang Dzongkhag

**Table 70. Number of Administrative Units, Sarpang , (2007 ~ 2011)**

Details	2007	2008	2009	2010	2011
Administration (Number)					
Drungkhags	1	1	1	1	1
Gewogs	12	12	12	12	12
Chiwogs	90	90	90	90	61
Villages	172	172	172	172	172
Households	7,651	7,817	7,986	8,157	8,329
Towns	2	2	2	2	2
Number of Police stations	2	2	2	2	2

Note : Households data is calculated by ratio method.

**Table 71. Recreation, Tourist Visitors and Accommodation, Sarpang , (2007 ~ 2011)**

Details	2007	2008	2009	2010	2011
Number of children park	1	1	1	2	2
Number of hotels	n.a	n.a	n.a	n.a	n.a
Number of restaurants	n.a	n.a	n.a	n.a	n.a
Number of drayangs	n.a	n.a	n.a	n.a	n.a
Number of discotheques	n.a	n.a	n.a	n.a	n.a
Number of Foreign tourist visitors	n.a	n.a	n.a	n.a	n.a

Source: Regional Trade Office, Gelephu, Sarpang Dzongkhag



**National Statistics Bureau**  
**ROYAL GOVERNMENT OF BHUTAN**  
P.O. Box No. 338 Thimphu  
Telephone No: +975-2-322753/333296/325402  
Fax: +975-2-323069

[www.nsb.gov.bt](http://www.nsb.gov.bt)

ISBN-978-99936-28-11-8