

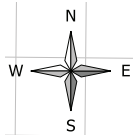


ANNUAL DZONGKHAG STATISTICS 2011

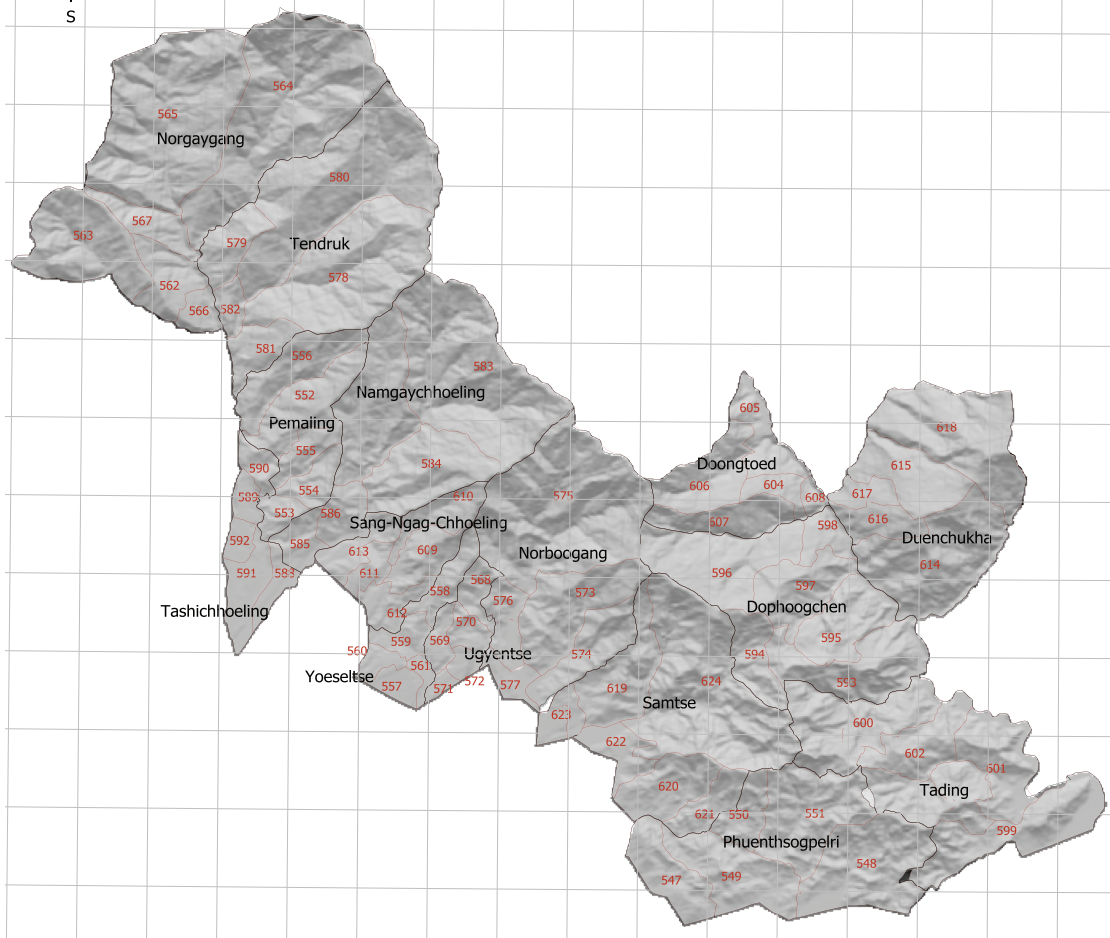


**Dzongkhag Administration
SAMTSE**





**Samtse Gewogs and Chiwogs as per the final delimitation order issued
by the
Election Commission of Bhutan**



© 2011
National Statistics Bureau

All rights reserved

Published by
National Statistics Bureau

Contact
National Statistics Bureau
PO Box No. 338
Telephone: +975-2-322753/333296
Fax: +975-2-323069
Website: www.nsb.gov.bt

Statistics Unit
Samtse Dzongkhag
Telephone: +975-05-365612
Fax: +975-05-365335
Email: dsosam@druknet.bt

Second Issue
Catalogue No. 104

Contents

	page
Preface	i
Background of Dzongkhag	ii
Abbreviations	iii
Section 1. Population (Tables 1-2)	1-2
Population by Age-Group and Sex	1
Population Density and Sex Ratio	2
Section 2. Births, Deaths, Marriages, and Divorces (Tables 3-10)	3-6
Total number Live Births, Deaths, Marriages, and Divorces	3
Adolescent Birth Rate and Total Fertility Rate	3
Early Childbearing	4
Use of Contraception	4
Antenatal Care Provider	5
Number of Antenatal Care Visits	5
Assistance During Delivery	6
Place of Delivery	6
Section 3. Health and Nutrition (Tables 11-26)	7-16
Health Infrastructures, Facilities and Personnel	7
Hospital Admission and Average Length of Stay	8
Number of Surgeries	8
Number of Dental Services	8
Number of Top Ten Morbidity	9
Child Disability	9
Nutritional Status of Children	10
Initial Breastfeeding	10
Duration of Breastfeeding	11
Low Birth Weight Infants	11
Neonatal Tetanus Protection	11
Solid Fuel Use	12
Use of Improved Water Sources	13
Household Water Treatment	14
Time to Source of Drinking Water	15
Types of Sanitation Facilities	16

Section 4. Education (Tables 27-34)	17-24
Number of Schools, Institutions, Teachers and Students	17
School Enrolment by Grade and Sex	20
Student by Age-Group, Sex and by Level	22
Literacy Among Young Women	23
School Readiness	23
Primary School Entry	24
Children Reaching Last Grade of Primary School	24
Education Gender Parity	24
Section 5. Law Enforcement, Courts, and Prisons (Tables 35-38)	25-27
Summary of Crime Reports by Nature of Crime	25
Monthly Motor Vehicle Accidents	26
Causes of Motor Vehicle Accidents	26
Attitudes Toward Domestic Violence	27
Section 6. Geography and Environment (Tables 39-43)	27-29
Land Area and Damages Caused by Types	27
Average Monthly Temperature	28
Average Monthly Rainfall	28
Percentage of Forest Coverage, Number of Protected Spring and Lakes	29
Disposal of Childs Faeces	29
Section 7. Elections and Local Government (Tables 44-45)	30-31
Parliamentarians and Local Government Representatives	30
Parliamentarians and Local Government election expenditures	31
Section 8. Royal Government Finances and Employment (Tables 46-50)	32-34
Government Finance Expenditures	32
Dzongkhag 9th & 10th Five Year Plan Outlays	33
Dzongkhag 9th and 10th Five Year Plan Expenditure	33
Gewog 9th and 10th Five Year Plan Outlays	34
Gewog 9th and 10th Five Year Plan by Expenditures	34
Section 9. Labor Force, Employment, and Earnings (Tables 51-54)	35-38
Employed Persons by Age, Sex and Area of Residence	35
Employment by Industries, Age-Group and Sex	36
Child Labour	37
Child Labour and School Attendance	38

Section 10. Prices (Tables 55-55)	38-41
Agricultural Production & Average prices by commodities	38
Section 11. Agriculture (Tables 56-58)	41-43
Renewable Natural Resources	41
Agricultural Production by Types	41
Livestock Population by Types	42
Livestock Productions	43
Section 12. Forestry, Fishing and Mining (Tables 59-59)	44-44
Forestry Productions	44
Section 13. Energy and Utilities (Tables 60-60)	44-44
Electricity Generating Stations And Their Capacities	44
Section 14. Construction and Housing (Tables 61-62)	45-45
Number of Households by Area	45
Number of Building Permits issued by Towns	45
Section 15. Manufactures (Tables 63-63)	45-45
Number of Establishment by Type and Size	45
Section 16. Wholesale and Retail Trade (Tables 64-64)	46-46
Number of Wholesale, Retail Trade and Industrial licenses issued	46
Section 17. Transportation (Tables 65-66)	46-46
Number of Public Transport and Facilities	46
Roads and Bridges	47
Section 18. Information and Communications (Tables 67-67)	47-47
Telecommunications	47
Section 19. Banking, Finance, and Insurance (Tables 68-69)	47-48
Number of Establishment in Banking and Finance	47
Number of account holders in Banks	48
Section 20. Arts, Recreation, Accommodation and Monuments (Tables 70-71)	48-48
Number of Administrative Units	48
Recreation, Tourist Visitors and Accommodation	48



Preface

The Annual Dzongkhag Statistics of Samtse is the second in the series of publications. It attempts to provide comprehensive statistics of Samtse Dzongkhag and will be published annually.

The report contains statistics on demographic and socio-economic, environment, culture, local governance and infrastructures of the Dzongkhag. The statistical data for this publication are collected and compiled from various sectors and through primary sources.

We hope that this report will serve as a source of information and guiding tool for micro-level planning and decision-making in the Dzongkhag. Statistics office, Samtse would like to thank and acknowledge the support and cooperation of all sector heads concerned for providing timely information for this report. Without their support, this publication would not have been possible. Through this initiative, we also hope that the maintenance of sectoral information and updation in the Dzongkhag will become more systematic and efficient henceforth.

Since this report is the second publication and with information source being from numerous sectors, we expect there may be certain deficiencies in terms of coverage and updation. However, there will be continuous efforts made to improve its coverage and quality in our future publications. Your comments and suggestions in this regard will be highly appreciated.

Dzongkhag Statistics Unit
Samtse

Background

Samtse Dzongkhag, encompassing a total area of 1309.1 Sq.Km with an altitude ranging from 300-800 meters above the sea level, has two Dungkhags Dorokha & Sipsu and has fifteen Gewogs, namely Samtse, Chengmari, Ugentse, Yoseltse, chargharey, Lahereni, Sipsu, Biru, Tendu, Bara, Pagli, Tading Dorokha, Denchukha and Dungtoe. It is bordered by Chukha Dzongkhag in the east, Ha dzongkhag in the north and Indian State of West Bengal and Sikkim in the south and west respectively.

As per the PHCB 2005, Samtse has 11,634 households and a total population of 60,100 out of which 49,961 live in the rural areas. The projected population for 2011, based on PHCB 2005, is 66,459.

A favorable terrain condition coupled with construction of new roads has brought manifold changes in the socio-economic development of Samtse. It is also considered as one of the prosperous Dzongkhags in the country.

The main source of income for the people of Samtse is from cash crops like cardamom, oranges, ginger and areca nut.

Samtse has a total road network of 232.67 Km including 77 Km of Dzongkhag Highway, 62.25 km of Urban/feeder roads, 18 km of forest roads and 75.42 Km of farm roads. It has a total of 21 Schools, out of which 10 are Community Primary Schools, 5 Lower Secondary Schools, 3 Middle Secondary Schools and 3 Higher Secondary Schools with a total of 15,591 students and 495 teachers as of December 2011. It also has 82 NFE Centres and over 1,505 NFE Learners and 83 NFE Instructors. Samtse College of Education, located in Samtse for teachers has 720 trainees and 58 teachers as of December 2011. It has three hospitals, nine BHUs and 24 ORCs.

As of 2011, a total of 855 households have access to direct fixed telephone line and 20,200 mobile subscribers

Abbreviations

%:	Percent	Inst:	Institute
< :	Less than	Kg:	Kilogram
> :	Greater than	LFS:	Labor Force Survey
AIDS:	Acquired Immune Deficiency Syndrome	LSS:	Lower Secondary School
Avg:	Average	Max:	Maximum
BHU:	Basic Health Unit	Min:	Minimum
BLSS:	Bhutan Living Standard Survey	MSS:	Middle Secondary School
Cft:	Cubic Feet	n.a:	Not Available
CPS:	Community Primary school	N.A:	Not Applicable
DPTH:	Diphtheria Parthosis Tetanus Hepatitis B	NFE:	Non Formal Education
DYT:	Dzongkhag Yargye Tsogdue	Nu:	Ngultrum
FYP:	Five Year Plan	ORC:	Outreach Clinic
GDP:	Gross Domestic Product	PAR:	Poverty Analysis Report
GIS:	(Infrastructure mapping): Geographical Infrastructure System	PHCB:	Population and Housing Census of Bhutan
Gm:	Gram	PP:	Pre Primary
GYT:	Gewog Yargye Tshogchung	PS:	Primary School
HIV:	Human Immune Virus	Pvt:	Private
Hr:	Hour	Qty:	Quantity
HSS:	Higher Secondary School	Sq.Km:	Square Kilometer
		SYB:	Statistical Year Book
		TV:	Television



Table 1. Population by Age-Group and Sex, Samtse, (2005 ~ 2011)

Age-group	2005	2006	2007	2008	2009	2010	2011
Total	60,100	61,136	62,187	63,245	64,314	65,387	66,459
0-4	6,025	6,468	6,885	7,299	7,708	8,108	8,065
5-9	6,794	6,356	6,199	6,066	5,956	5,868	6,288
10-14	7,518	6,842	6,746	6,633	6,514	6,397	6,230
15-19	6,474	6,726	6,761	6,786	6,791	6,769	6,715
20-24	6,391	6,318	6,381	6,436	6,487	6,535	6,586
25-29	5,201	5,663	5,786	5,896	5,997	6,090	6,175
30-34	4,068	4,712	4,879	5,053	5,223	5,382	5,526
35-39	3,614	3,936	4,047	4,161	4,285	4,426	4,587
40-44	3,059	3,197	3,316	3,443	3,569	3,695	3,814
45-49	2,801	2,632	2,705	2,782	2,869	2,967	3,077
50-54	2,297	2,171	2,232	2,295	2,363	2,433	2,506
55-59	1,610	1,781	1,823	1,868	1,918	1,972	2,029
60-64	1,366	1,437	1,468	1,502	1,537	1,576	1,617
65+	2,882	2,897	2,959	3,025	3,096	3,169	3,244
Male	31,306	31,791	32,285	32,781	33,283	33,792	34,309
0-4	3,072	3,221	3,430	3,638	3,843	4,044	4,023
5-9	3,542	3,182	3,098	3,027	2,968	2,921	3,133
10-14	3,889	3,452	3,397	3,334	3,269	3,205	3,117
15-19	3,150	3,441	3,444	3,444	3,436	3,416	3,382
20-24	3,357	3,333	3,343	3,347	3,350	3,354	3,364
25-29	2,642	3,037	3,096	3,147	3,190	3,225	3,252
30-34	2,122	2,556	2,640	2,726	2,810	2,888	2,960
35-39	1,898	2,142	2,203	2,264	2,329	2,402	2,485
40-44	1,584	1,717	1,786	1,860	1,933	2,005	2,072
45-49	1,497	1,400	1,439	1,481	1,529	1,584	1,648
50-54	1,231	1,150	1,182	1,215	1,251	1,288	1,327
55-59	878	938	960	983	1,009	1,037	1,067
60-64	802	750	766	783	801	821	842
65+	1,642	1,472	1,501	1,532	1,565	1,602	1,637

Female	28,794	29,345	29,902	30,464	31,030	31,595	32,150
0-4	2,953	3,247	3,455	3,661	3,865	4,064	4,042
5-9	3,252	3,174	3,101	3,039	2,988	2,947	3,155
10-14	3,629	3,390	3,349	3,299	3,245	3,192	3,113
15-19	3,324	3,285	3,317	3,342	3,355	3,353	3,333
20-24	3,034	2,985	3,038	3,089	3,137	3,181	3,222
25-29	2,559	2,626	2,690	2,749	2,807	2,865	2,923
30-34	1,946	2,156	2,239	2,327	2,413	2,494	2,566
35-39	1,716	1,794	1,844	1,897	1,956	2,024	2,102
40-44	1,475	1,480	1,530	1,583	1,636	1,690	1,742
45-49	1,304	1,232	1,266	1,301	1,340	1,383	1,429
50-54	1,066	1,021	1,050	1,080	1,112	1,145	1,179
55-59	732	843	863	885	909	935	962
60-64	564	687	702	719	736	755	775
65+	1,240	1,425	1,458	1,493	1,531	1,567	1,607

Note: Figures for the year 2006 onwards are based on the projected population

Source: Population & Housing Census of Bhutan, 2005

Table 2. Population, Density and Sex Ratio, Samtse, (2005 ~ 2011)

Details	2005	2006	2007	2008	2009	2010	2011
Population (Number)	60,100	61,136	62,185	63,245	64,314	65,387	66,459
Population density (Persons per Sq. Km)	38	47	48	48	49	50	51
Population sex ratio	109	108	108	108	107	107	107

Source : Dzongkhag Population Projection 2006-2015

Table 3. Total Number of Live Births, Deaths, Marriages and Divorces, Samtse, (2008 ~ 2011)

Age-group	2008	2009	2010	2011
Live births				
Male	599	552	1,016	n.a
Female	530	506	517	n.a
Total deaths				
Male	124	133	110	n.a
Female	108	100	94	n.a
Infant deaths				
Male	9	4	2	n.a
Female	5	1	3	n.a
Marriages	145	160	455	362
Male	0	0	0	0
Female	0	0	0	0
Divorces	16	27	16	18
Male	0	0	0	0
Female	0	0	0	0

Source: Dzongkhag Health Sector & Court, Samtse Dzongkhag

Table 4. Adolescent Birth rate and Total fertility rate, Samtse, (2010)

Details	2010
Adolescent birth rate (age specific fertility rate for women age 15-19)	63
Total fertility rate	3

Source : BMIS, 2010

Table 5. Early Childbearing, Samtse, (2010)

Percentage of women age 15-19 who have had livebirth or who are pregnant with the first child; percentage of women age 15-19 who have begun childbearing before age 15, and the percentage of women age 20~24 who have had a live birth before age 18.

Details	2010
% of women age 15~19	
Have had a live birth	8.5
Are pregnant with first child	3.6
Have begun childbearing	12.2
Have had a live birth before 15	0.7
Number of women age 15~19	251.0
% of women age 20~24 who have had a live birth before age 18	18.7
Number of women age 20~24	274.0

Source : BMIS, 2010

Table 6. Use of Contraception, Samtse, (2010)

Percentage of Women age 15~49 Years Currently Married or in Union Who are using (or whose partner is using) a Contraceptive Method.

Details	2010
Not using any method	32.9
Percent of women (currently married or in union) who are using	
Female sterilization	9.1
Male sterilization	21.5
IUD	1.0
Injectables	21.8
Implants	0.0
Oral contraceptive Pill	10.3
Male condom	3.2
Female condom	0.0
Foam/ jelly	0.0
Lactational amenorrhoea method (LAM)	0.0
Periodic abstinence/ rhythm	0.2
Withdrawal	0.0
Other	0.0
Any modern method	66.9
Any traditional method	0.2
Any method	67.1
Number of women currently married or in union	1,143.0

Source : BMIS, 2010

Table 7. Antenatal Care Provider, Samtse, (2010)

Percent Distribution of Women Aged 15~49 Who Gave Birth in The Survey by Type of Personnel Providing Antenatal Care.

Details	2010
Persons providing antenatal care	
Doctor	17.5
Nurse/ midwife	57.7
HA/ BHW	24.0
Assistant clinical officer (ACO)	0.0
Traditional birth attendant	0.0
Village health worker	0.0
Other/ missing	0.0
No antenatal care received	0.8
Total	100.0
At Least once by skilled personnel	99.2
Number of women who gave birth in the preceding 2 years	221.0

Source : BMIS, 2010

Table 8. Number of Antenatal Care Visits, Samtse, (2010)

Percentage of Women Who had a Live Births During the Two Years Preceding the Survey by Number of Antenatal Care Visits by Any Provider.

Details	2010
Percent of women who had:	
No antenatal care visits	0.8
1 Visits	1.5
2 Visits	3.7
3 Visits	7.2
4 or more visits	86.8
Missing/ DK	0.0
Total	100.0
Number of women who gave birth in the preceding 2 years	221.0

Source : BMIS, 2010

Table 9. Assistance During Delivery, Samtse, (2010)

Percent Distribution of Women age 15-49 Who had a Live Birth in the Two Years Preceding the Survey by Person Assisting, at Delivery and Percentage of Births Delivered by C-section.

Details	2010
Person assisting at delivery:	
Doctor	8.2
Nurse / Midwife	49.4
HA/BHW	5.3
Asst. clinical officer (ACO)	0.0
Traditional birth attendant	2.2
Village health worker	0.0
Relative / friend	27.9
Other/missing	5.3
No attendant	1.7
Total	100
Any skilled personnel	62.9
Percent delivered by C-section	11.4
Number of women who gave birth in preceding two years	221.0

Source : BMIS, 2010

Table 10. Place of Delivery, Samtse, (2010)

Percent Distribution of Women age 15-49 With a Birth in Two Years Preceding the Survey by Place of Delivery.

Details	2010
Place of delivery	
Public sector health facility	59.9
Private sector health facility	0.0
Home	40.1
Other	0.0
Total	100.0
Delivered in health facility [1]	59.9
Number of women who gave birth in preceding two years	221.0

Source : BMIS, 2010

Table 11. Health Infrastructures, Facilities and Personnel, Samtse, (2007 ~ 2010)

Details	2007	2008	2009	2010
Number of hospitals	3	3	3	3
Number of BHUs				
BHU grade I	0	0	0	0
BHU grade II	9	9	9	9
Number of ORCs	19	20	21	24
Number of indigenous units	2	2	2	2
Number of doctors	7	9	9	7
Number of hospital/BHU beds	89	89	89	89
Persons per doctor	8,884	7,027	7,146	9,341
Persons per hospital bed	699	711	723	734
Total morbidity attendance	97,506	110,163	123,004	129,945
Health assistants	17	17	20	22
Basic health workers	9	9	9	8
Sister and nurses	26	30	31	25
Technicians	16	18	33	29
Indigenous dungtsho	1	1	1	1
Indigenous compounders/Menpas	2	2	2	2
Malaria workers	8	8	8	9
Village health workers	96	119	105	105
Number of children immunized				
Polio	1,051	1,306	1,189	1,110
DPTH	1,045	1,303	1,189	1,087
Measles	1,078	1,341	1,187	1,158
BCG	1,015	1,130	938	889
Others	n.a	n.a	n.a	n.a

Source: Dzongkhag Health Sector, Samtse Dzongkhag

Table 12. Hospital Admission and Average Length of Stay, Samtse, (2007 ~ 2010)

Average admission	2007	2008	2009	2010
Hospital admission	2,450	3,359	3,213	3,304
Total	2,725	3,807	3,694	3,808
Patient days	12,104	15,834	16,076	13,434
Average days	59	57	60	49
BHU admission	275	448	481	504

Source : Annual Health Bulletin, MoH

Table 13. Number of Surgeries, Samtse, (2007 ~ 2010)

Details	2007	2008	2009	2010
Surgeries				
Caesarian Section	131	12	8	11
General Abdominal	58	159	109	134
General Others	419	1024	745	384
Orthopaedic extremities	36	1	51	2
Orthopaedic Others	67	190	177	158
Gynaecology	99	17	13	5
ENT	8	2	180	2
Eye	6	5	713	226

Source : Annual Health Bulletin, MoH

Table 14. Number of Dental Services, Samtse, (2007 ~ 2010)

Dental Services	2007	2008	2009	2010
Prophylaxis	607.00	441.00	223.00	698.00
Scaling	0.00	18.00	0.00	0.00
Fillings	1,023.00	934.00	672.00	1,207.00
Extractions	1,613.00	1,006.00	968.00	791.00
Others	979.00	814.00	1,359.00	1,112.00

Source : Annual Health Bulletin, MoH

Table 15: Number of Top Ten Morbidity, Samtse, (2007~ 2010)

Priority health problem/ Disease	2007	2008	2009	2010
Diarrhoea	5,415	6,272	7,361	5,202
Conjunctivitis	3,890	2,601	3,121	6,405
Dysentery	1,566	1,480	1,931	974
Typhoid	111	131	123	0
Sexually transmitted disease, excluding HIV/AIDS	41	30	48	21
Diabetes	53	79	76	88
Tuberculosis	85	69	137	120
Early syphilis	1	0	2	0
Cholera	0	0	0	1
Tetanus	3	0	0	2
Diphtheria	0	0	0	3
Pertussis	0	0	0	4

Source : Dzongkhag Health Sector, Samtse Dzongkhag

Table 16. Child Disability, Samtse, (2010)

Child Disability	2010
Percentage of children aged 2-9 years with reported disability by type of disability	
Delay in sitting standing or walking	5.8
Difficulty seeing, either in the daytime or at night	3.7
Appears to have difficulty hearing	2.6
No understanding of instructions	3.6
Difficulty in walking moving, moving arms, weakness or stiffness	3.0
Have fits, become rigid, lose consciousness	2.9
Not learning to do things like other children his/her age	5.2
No speaking cannot be understood in words	3.1
Appears mentally backward, dull, or slow	2.1
Speech is not normal	16.2
Number of children aged 3-9 years	1,219
Cannot name at least one object	27.4
Number of children aged 2 years	174
Percentage of children 2-9 years of age with at least one reported disability*	31.1
Number of children aged 2-9 years	1,394

Source: BMIS, 2010

Table 17. Nutritional Status of Children, Samtse, (2010)

Percentage of children under age 5 by nutritional status according to three anthropometric indices: weight for age, height for age, and weight for height.

Nutritional Status		2010
Weight for age:	% below -2 sd [1]	13.1
Weight for age:	% below -3 sd [2]	2.0
Weight for age:	Mean Z-Score (SD)	-0.9
Weight for age:	Number of children	730
Height for age:	% below -2 sd [3]	28.4
Height for age:	% below -3 sd [4]	7.5
Height for age:	Mean Z-Score (SD)	-1.2
Height for age:	Number of children	712
Weight for height:	% below -2 sd [5]	4.7
Weight for height:	% below -3 sd [6]	1.5
Weight for height:	% above +2 sd	2.3
Weight for height:	Mean Z-Score (SD)	-0.3
Weight for height:	Number of children	709

Source: BMIS, 2010

Table 18. Initial Breastfeeding, Samtse, (2010)

Percentage of Last-Born Children in the 2 Years Preceding the Survey Who Were Ever Breastfed, Percentage Who Were Breastfed Within One Hour of Birth and Within One Day of Birth, and Percentage Who Received a Prelacteal Feed.

Initial Breastfeeding	2010
Percentage ever breastfed	100
Percentage who were first breastfed: Within one hour of birth	52.1
Percentage who were first breastfed: Within one day of birth	89.9
Percentage who received a prelacteal feed	17.2
Number of last-born children in the two years preceding the survey	221

Source: BMIS, 2010

Table 19. Duration of Breastfeeding, Samtse, (2010)

Median duration of any breastfeeding, exclusive breastfeeding, and predominant breastfeeding among children age 0-35 months.

Duration of Breastfeeding	2010
Median duration (in months) of	
Any breastfeeding	21.9
Exclusive breastfeeding	2.3
Predominant breastfeeding	3.7
Number of children age 0-35 months	399

Source: BMIS, 2010

Table 20. Low Birth Weight Infants, Samtse, (2010)

Percentage of Last-Born Children in the 2 Years Preceding the Survey That are Estimated to Have Weighed Below 2500 Grams at Birth and Percentage of Live Births Weighed at Birth.

Low Birth Weight Infants	2010
Percent of live births	
Below 2500 grams	11.7
Weighed at birth	65.1
Number of live births in the last 2 years	221

Source: BMIS, 2010

Table 21. Neonatal Tetanus Protection, Samtse, (2010)

Percentage of women age 15-49 years with a live birth in the last 2 years protected against neonatal tetanus.

Neonatal Tetanus Protection	2010
Percentage of Women Who Received at Least 2 Doses	
During Last Pregnancy	53.5
Percentage of women who did not receive two or more	
doses during last pregnancy but received	
2 doses, the last within prior 3 years	31.6
3 doses, the last within prior 5 years	0.0
4 doses, the last within prior 10 years	0.0
5 or more doses during lifetime	0.0
Protected against tetanus [1]	85.1
Number of women with a live birth in the last 2 years	221

Source: BMIS, 2010

Table 22. Solid Fuel Use, Samtse, (2010)

Percentage Distribution of Household Members According to Type of Cooking Fuel Used by the Household, and Percentage of Household Members Living in Households Using Solid Fuels for Cooking.

Solid Fuel Use	2010
Percentage of household members in households using	
Electricity	25.5
Liquefied Petroleum Gas (LPG)	12.8
Kerosene	0.4
Coal	0.3
Wood	61.0
Straw/Shrubs/Grass	0.1
No food cooked in household	0.0
Other	0.0
Total	100
Solid fuels for cooking	61.3
Number of household members	7530

Source: BMIS, 2010

Table 23. Use of Improved Water Sources, Samtse, (2010)

Percent distribution of household population according to main source of drinking water and percentage of household population using improved drinking water sources.

Water Sources	2010
Main source of drinking water:	
Improved sources	
Piped into dwelling	20.4
Piped into compound	65.3
Piped to neighbor	4.7
Public outdoor tap	4.0
Protected well	0.1
Spring	0.9
Rainwater collection	0.0
Bottled water	0.0
Unimproved sources:	
Unprotected well	1.2
Unprotected spring	2.2
Tanker-truck	0.0
Cart with samll tank/drum	0.0
Surface water (river,stream, dam, lake,pond,canal,irrigation channel)	1.0
Other	0.2
Total	100
Percentage using improved sources of drinking water	95.4
Number of household members	7530

Source: BMIS, 2010

Table 24. Household Water Treatment, Samtse, (2010)

Percentage of Household Population by Drinking Water Treatment Method Used in the Household, and for Household Members Living in Households Where an Unimproved Drinking Water Source is Used, the Percentage Who are Using an Appropriate Treatment Method

Water Treatment	2010
Water treatment method used in the household	
None	11.1
Boil	85.5
Add bleach / chlorine	0.0
Strain through a cloth	1.2
Use water filter	17.2
Solar disinfection	0.0
Let it stand and settle	3.0
Other	0.0
Don't know	0.0
Number of household members	7530
Percentage of household members in households using unimproved drinking water sources and using an appropriate water treatment method [1]	70.1
Number of household members in households using unimproved drinking water sources	345

Source: BMIS, 2010

Table 25. Time to Source of Drinking Water, Samtse, (2010)

Percent Distribution of Household Population According to Time to go to Source of Drinking Water, Get Water and Return, for Users of Improved and Unimproved Drinking Water Sources

Time to Source of Drinking Water	2010
Time to source of drinking water	
Users of improved drinking water sources	
Water on premises	93.4
Less than 30 minutes	1.5
30 minutes or more	0.5
Missing/DK	0.0
Users of unimproved drinking water sources	
Water on premises	1.7
Less than 30 minutes	0.9
30 minutes or more	1.9
Missing/DK	0.0
Total	100
Number of household members	7530

Source: BMIS, 2010

Table 26. Types of Sanitation Facilities, Samtse, (2010)

Percent Distribution of Household Population According to Type of Toilet Facility Used by the Household

Types of Sanitation facilities	2010
Type of toilet facility used by household	
Improved sanitation facility	
Flush toilet	0.1
Flush to septic tank(Without soak pit)	41.6
Flush to pit (latrine)	11.2
Flush to unknown place/not sure/DK where	0.0
Flush to septic tank (with soak pit)	3.6
Ventilated Improved Pit latrine (VIP)	0.0
Pit latrine with slab	8.4
Composing toilet	0.4
Unimproved sanitation facility	
Flush to somewhere else	0.5
Pit latrine without slab /open pit	29.2
Long drop latrine	0.5
Bucket	0.0
Other	0.3
Missing	0.0
Open defecation (no facility, bush, field)	
No facility,bush, field	4.1
Total	100
Number of household members	7 5 3 0

Source: BMIS, 2010

Table 27. Number of Schools, Institutions, Teachers and Students, Samtse, (2008 ~ 2011)

Details	CPS	PS	LSS	MSS	HSS	College	Pvt.	Other Inst. Centres	NFE Daycare Centres	Total
2008										
Number of schools and institutions	5	3	1	5	1	1	0	3	61	80
Teaching staff	52	48	88	178	83	54	0	5	78	586
Bhutanese	41	35	82	145	65	49	0	5	78	500
Male	25	16	39	63	27	34	0	5	39	248
Female	5	6	37	49	20	10	0	0	39	166
Non-Bhutanese	0	0	1	28	16	5	0	0	0	50
Male	0	0	0	14	8	5	0	0	0	27
Female	0	0	1	14	8	0	0	0	0	23
Temporary teachers	11	13	5	5	2	0	0	0	0	36
Male	4	6	3	3	1	0	0	0	0	17
Female	7	7	2	2	1	0	0	0	0	19
Number of students	1,401	1,187	2,524	5,234	1,851	608	0	149	2,079	15,033
Male	743	680	1,256	2,731	954	387	0	73	920	7,744
Female	658	507	1,268	2,503	897	221	0	76	1,159	7,289
Student to teacher ratio	27:01	25:01	29:01	29:01	22:01	11:01	0	30:01	27:01	26:01
2009										
Number of schools and institutions	6	3	1	5	1	1	0	12	59	88
Teaching staff	66	43	104	210	90	54	0	12	78	657
Bhutanese	52	33	93	175	68	49	0	12	78	560
Male	31	18	39	74	25	34	0	12	37	270
Female	7	5	43	66	21	10	0	0	41	193

Non-Bhutanese	0	0	2	26	17	5	0	0	0	0	0	50
Male	0	0	1	15	9	5	0	0	0	0	0	30
Female	0	0	1	11	8	0	0	0	0	0	0	20
Temporary teachers	14	10	9	9	5	0	0	0	0	0	0	47
Male	6	3	4	6	4	0	0	0	0	0	0	23
Female	8	7	5	3	1	0	0	0	0	0	0	24
Number of students	1,629	1,193	2,860	5,654	2,086	663	0	624	1,960	0	0	16,669
Male	845	677	1,443	2,919	1,083	434	0	330	895	0	0	8,626
Female	784	516	1,417	2,735	1,003	229	0	294	1,065	0	0	8,043
Student to teacher ratio	25:01	28:01	28:01	27:01	23:01	12:01	0	52:01	25:01	0	0	25:01
2010												
Number of schools and institutions	7	3	4	4	2	1	0	19	68	2	2	110
Teaching staff	163	44	124	211	112	63	0	19	80	8	8	824
Bhutanese	129	36	110	175	84	57	0	19	80	8	8	698
Male	74	22	44	77	32	37	0	19	35	1	1	341
Female	21	6	52	62	24	14	0	0	45	7	7	231
Non-Bhutanese	0	0	4	27	22	6	0	0	0	0	0	59
Male	0	0	2	16	12	5	0	0	0	0	0	35
Female	0	0	2	11	10	1	0	0	0	0	0	24
Temporary teachers	34	8	10	9	6	0	0	0	0	0	0	67
Male	16	2	4	7	3	0	0	0	0	0	0	32
Female	18	6	6	2	3	0	0	0	0	0	0	35
Number of students	4,451	1,252	3,026	5,813	1,637	657	0	789	1,817	64	64	19,506
Male	2,424	702	1,518	2,976	1,171	426	0	404	773	35	35	10,429
Female	2,027	550	1,508	2,837	466	231	0	385	1,044	29	29	9,077
Student to teacher ratio	27:01	28:01	24:01	28:01	15:01	10:01	0	42:01	23:01	8:01	8:01	24:01

Table 28. School Enrolment by Grade and Sex, Samtse, (2008~2011)

Class	2008	2009	2010	2011
Primary level				
Total	9,583	10,290	10,670	11,436
Class PP	1,498	1,671	1,675	1,673
Class I	1,609	1,618	1,641	1,825
Class II	1,543	1,576	1,556	1,921
Class III	1,366	1,573	1,573	1,623
Class IV	1,446	1,348	1,559	1,673
Class V	1,138	1,415	1,305	1,444
Class VI	983	1,089	1,361	1,277
Male				
Total	4,982	5,345	5,505	5,941
Class PP	721	869	884	867
Class I	819	798	860	979
Class II	827	805	745	1,003
Class III	770	842	791	774
Class IV	767	749	839	841
Class V	572	742	693	788
Class VI	506	540	693	689
Female				
Total	4,601	4,945	5,165	5,495
Class PP	777	802	791	806
Class I	790	820	781	846
Class II	716	771	811	918
Class III	596	731	782	849
Class IV	679	599	720	832
Class V	566	673	612	656
Class VI	477	549	668	588
Secondary level				
Total	4,193	3,115	3,577	4,144
Class VII	1,738	719	1,078	1,266
Class VIII	1,008	810	914	967
Class IX	896	652	771	900
Class X	480	516	576	664
Class XI	0	64	105	183
Class XII	0	79	0	164

Male	2,204	1,632	1,871	2,121
Class VII	916	508	548	622
Class VIII	540	419	472	493
Class IX	496	336	407	454
Class X	252	297	297	351
Class XI	0	31	108	102
Class XII	0	41	39	99
Female	1,989	1,483	1,706	2,023
Class VII	822	486	530	644
Class VIII	468	391	442	474
Class IX	400	316	364	446
Class X	228	219	279	313
Class XI	48	33	57	81
Class XII	23	38	34	65

Source: EIMS, Dzongkhag Education Sector, Samtse Dzongkhag

Table 29. Student by Age-Group, Sex and by Level, Samtse, (2008~2011)

Details	2008	2009	2010	2011
Students in primary school level (Class PP-VI)				
Total	8,556	10,453	10,155	11,437
Age < 6 years	130	125	299	65
Age 6-12 years	6,011	7,584	7,234	8,293
Age 13 & above	2,415	2,744	2,622	3,079
Male	4,425	5,218	5,183	5,935
Age < 6 years	61	62	155	37
Age 6-12 years	3,057	3,769	3,572	4,164
Age 13 & above	1,307	1,387	1,456	1,734
Female	4,131	5,235	4,972	5,502
Age < 6 years	69	63	144	28
Age 6-12 years	2,954	3,815	3,662	4,129
Age 13 & above	1,108	1,357	1,166	1,345
Student in LSS level (Class VII-VIII)				
Total	1,174	1,812	1,875	1,508
Age < 13 years	7	135	99	43.0
Age 13-14 years	437	443	367	595.0
Age 15 & above	730	1,234	1,409	1,665.0

Male	627	934	977	1,135
Age < 13 years	3	60	54	15
Age 13-14 years	224	203	159	250
Age 15 & above	400	671	764	870
Female	547	878	898	373
Age < 13 years	4	75	45	28
Age 13-14 years	213	240	208	345
Age 15 & above	330	563	645	795
Students in MSS level (Class IX-X)				
Total	833	1,195	1,337	1,362
Age < 15 years	20	56	23	28
Age 15-16 years	271	406	385	325
Age 17 & above	542	733	929	1,009
Male	446	563	688	720
Age < 15 years	8	31	10	17
Age 15-16 years	140	166	145	148
Age 17 & above	298	366	533	555
Female	387	632	649	642
Age < 15 years	12	25	13	11
Age 15-16 years	131	240	240	177
Age 17 & above	244	367	396	454
Students in HSS level (Class XI-XII)				
Total	142	143	238	347
Age < 17 years	11	11	7	17
Age 17-18 years	72	54	113	127
Age 19 & above	59	78	118	203
Male	72	72	147	201
Age < 17 years	2	2	4	6
Age 17-18 years	31	26	65	63
Age 19 & above	39	44	78	132
Female	70	71	91	146
Age < 17 years	9	9	3	11
Age 17-18 years	41	28	48	64
Age 19 & above	20	34	40	71

Source : EIMS, Education Sector, Samtse Dzongkhag

Table 30. Literacy Among Young Women, Samtse, (2010)

Literacy Among Young Women	2010
Percentage literate	49.1
Percentage not known	0.0
Number of women age 15-24 years	524

Source: BMIS, 2010

Table 31. School Readiness, Samtse, (2010)

Percentage of children attending first grade of primary school who attended pre-school the previous year.

School Readiness	2010
Percentage of children attending first grade who attended preschool in previous year	0.7
Number of children attending first grade of primary school	222

Source: BMIS, 2010

Table 32. Primary School Entry, Samtse, (2010)

Percentage of Children of Primary School Entry Age Entering Grade 1 (net intake rate)

Primary School Entry	2010
Percentage of children of primary school entry age entering grade 1	69.4
Number of children of primary school entry age	184

Source: BMIS, 2010

Table 33. Children Reaching Last Grade of Primary School, Samtse, (2010)

Percentage of children entering first grade of primary school who eventually reach the last grade of primary school (Survival rate to last grade of primary school)

Details	2010
Percent attending grade 1 last year who are in grade 2 this year	96.2
Percent attending grade 2 last year who are attending grade 3 this year	100
Percent attending grade 3 last year who are attending grade 4 this year	99.1
Percent attending grade 4 last year who are attending grade 5 this year	95.3
Percent attending grade 5 last year who are attending grade 6 this year	98.8
Percent who reach grade 6 of those who enter grade 0	89.7

Source: BMIS, 2010

Table 34. Education Gender Parity, Samtse, (2010)

Education gender parity Ratio of adjusted net attendance ratios of girls to boys, in primary and secondary school

Education Gender Parity	2010
Primary school adjusted net attendance ratio (NAR), girls	91.2
Primary school adjusted net attendance ratio (NAR), boys	91.6
Gender parity index (GPI) for primary school adjusted NAR	1.0
Secondary school adjusted net attendance ratio (NAR), girls	46.7
Secondary school adjusted net attendance ratio (NAR), boys	50.0
Gender parity index (GPI) for secondary school adjusted NAR	0.93

Source: BMIS, 2010

Table 35. Summary of Crime Reports by Nature of Crime, Samtse, (2009 ~ 2011)

Nature of Crime	(Incident)		
	2009	2010	2011
Attempt, aiding and abetting, solicitation and criminal conspiracy	6	1	7
Homicide	0	0	2
Assault, battery and related offences	2	0	0
Kidnapping and related offences	2	0	0
Sexual offence	0	1	1
Offence against infant, child, mentally disabled and incompetent person	0	0	1
Arson and related offences	0	1	2
Burglary, trespass and related offences	3	11	9
Larceny, robbery, armed robbery and related offences	19	12	13
Money laundering and smuggling	0	0	0
Embezzlement and bribery	0	1	0
Forgery and related offences	0	0	2
Defamation and related offences	0	0	0
Treason, terrorism and related offences	0	0	0
Offences against cultural and national heritage	0	0	1
Offences against judicial authority	1	0	0
Prostitution and related offences	0	0	0
Offences against the public welfare	1	0	1
Offences related to public and civic duties	0	0	0
Offences related to public order and tranquillity	0	0	0
Offences against privacy	0	0	0
Computer offences	0	0	0
Offences related to firearms and weapons	1	1	1
Offences related to protected species, controlled and other harmful substances	10	2	2
Motor vehicle offences	1	0	0
Others	11	5	9
Total crimes	57	35	51

Source: Royal Bhutan Police, Samtse Dzongkhag

Table 36. Monthly Motor Vehicle Accidents, Samtse, (2009~ 2011)

Month	2009	2010	2011
January	n.a	1	n.a
February	n.a	2	n.a
March	n.a	n.a	n.a
April	n.a	n.a	n.a
May	n.a	n.a	n.a
June	n.a	1	n.a
July	n.a	n.a	n.a
August	n.a	1	n.a
September	n.a	1	n.a
October	n.a	n.a	n.a
November	n.a	n.a	n.a
December	n.a	n.a	n.a
Total	n.a	6	n.a

Source: SYB 2010, NSB

Table 37. Causes of Motor Vehicle Accidents, Samtse, (2009~2011)

Details	2009	2010	2011
Mechanical fault	n.a	2	n.a
Drunk driving	n.a	0	n.a
Bad weather	n.a	0	n.a
Without licence	n.a	1	n.a
Unknown causes	n.a	0	n.a
Other causes	n.a	4	n.a
All causes	n.a	7	n.a

Source: SYB 2010, NSB

Table 38. Attitudes Toward Domestic Violence, Samtse, (2010)

Details	2010
Percentage of women age 15-49 years who believe a husband is justified in beating his wife/partner	
If goes out without telling him	37.7
If she neglects the children	52.4
If she argues with him	52.5
If she refuses sex with him	28.0
If she burns the food	19.1
For any of these reasons	78.2
Number of women age 15-49 years	1562

Source: BMIS, 2010

Table 39. Land Area and Damages Caused by Types, Samtse, (2007 ~ 2010)

Details	2007	2008	2009	2010
Dzongkhag area (Sq. Km)	1,309.1	1,309.1	1,309.1	1,309.1
Total cultivated land (Acres) ¹				
Damages caused by landslides ²	n.a	n.a	n.a	n.a
Farmland (acres)				
Houses (Number)				
Roads (Km)				
Damages caused by floods ²	n.a	n.a	n.a	n.a
Farmland (acres)				
Houses (Number)				
Roads (Km)				
Crops affected by drought (acres)	n.a	n.a	n.a	n.a
Crops damaged by wild animals (acres)				
Incidence of earthquake				
(Number of cases reported) ²	0	0	0	0
Houses damaged by earthquakes (Number)	0	0	0	0
Number of forest fires ³	0	0	0	0
Acreage destroyed by forest fires	0	0	0	0
Acreage of reforestation ³	0	0	0	0
Houses/structures damaged by fires (Number) ³	0	0	0	7

Source: 1Agriculture Sector, 2Environment Sector, 3Forest Sector, Samtse Dzongkhag

Table 40. Average Monthly Temperature (Degree Centigrade), Samtse, (2010)

Month/ Temperature	(Degree Celsius)		
	Maximum	Minimum	Average
January	21	13	17
February	24	15	20
March	27	19	23
April	28	22	25
May	29	23	26
June	28	24	26
July	28	24	26
August	28	25	26
September	27	24	25
October	28	22	25
November	25	19	22
December	21	15	18
Annual	26	20	23

Source: SYB, NSB

Table 41. Average Monthly Rainfall, Samtse, (2010)

Month/ Monthly Rainfall	(Millimeter)		
	Maximum	Minimum	Average
January	0	0	0.0
February	4	32	18.0
March	39	119	79.0
April	86	347	216.5
May	325	541	433.0
June	676	1050	863.0
July	697	2228	1462.5
August	120	1525	822.5
September	117	1034	575.5
October	38	206	122.0
November	5	15	10.0
December	1	2	1.5
Annual	175.7	591.6	383.6

Source: SYB, NSB

Table 42. Percentage of Forest Coverage, Number of Protected Spring and Lakes, Samtse, (2010)

Details	2010
Forest coverage (%) ²	78.0
Number of snow fall at Dzongkhag headquarter	N.A
Number of Protected spring water sources ¹	18
Number of Lakes ¹	0

Source: 1Dzongkhag Forest Section, 2Tenth Plan Documents, GNHC

Table 43. Disposal of Childs Faeces, Samtse, (2010)

Percent distribution of children age 0-2 years according to place of disposal of child's faeces, and the percentage of children age 0-2 years whose stools were disposed of safely the last time the child passed stools

Disposal of Childs Faeces	2010
Place of disposal of child's faeces	
Child used toilet / latrine	24.4
Put / Rinsed into toilet or latrine	43.4
Put / Rinsed into drain or ditch	22.0
Thrown into garbage (solid waste)	3.4
Buried	0.8
Left in the open	2.5
Other	3.3
Total	100.0
Percentage of children whose stools were disposed of safely	67.8
Number of children age 0-2 years	399

Source: BMIS 2010

Table 44. Parliamentarians and Local Government Representatives, Samtse, (2008 & 2011)

Details	2008	2011
Local governance (Number)		
Parliamentarians		
Male	3	3
Female	1	1
Gups		
Male	14	15
Female	1	0
Total gewog tshogpas ¹	218	66
Male	3	58
Female		8
Total Mangmis ¹		
Male	15	15
Female	0	0
DYT members ²		
Male	29	31
Female	1	0
GYT members ¹		
Male	247	88
Female	1	8
Polling stations ²	79	80
Eligible voters (18 years and above) ²		
Male	22,676	24,095
Female	19,726	20,990
% of Voters turnout during election		
Male		61.43
Female		53.11
Total election staff in Dzongkhag		
Male	2	2
Female	1	2

Source: 1Gewog Administration, 2Election Sector, Samtse Dzongkhag.

Table 45. Parliamentary and Local Government Election Expenditures, Samtse, (2008 & 2011)

Details	Amount (Nu)
2008	
Parliamentarians (Number)	
National council	
National assembly	
2011	
Local government	11,400,000.00
Gup	n.a
Mangmi	n.a
Tsogpa	n.a

Source: Election Office, Samtse Dzongkhag

Table 46. Government Finance Expenditures, Samtse, (2009 ~ 2011)

Details Sectors	2008-2009 Expenditures		2009-2010 Expenditures		2010-2011 Expenditures	
	Current	Total	Current	Total	Current	Total
Civil		7.577		8.016		26.587
Agriculture		3.332		9.837		13.293
Livestock		1.993		1.748		3.326
Forestry		1.102		0.657		2.668
Education		18.320		38.297		58.728
Health		3.788		2.837		13.293
Religion & Culture		11.633		17.829		19.135
Urban Development & Housing		23.494		32.045		25.902
Roads		n.a		n.a		n.a
Bhutan post		n.a		n.a		n.a
Telecommunication		n.a		n.a		n.a
Power		n.a		n.a		n.a
Trade & industry		n.a		n.a		n.a
Total		71.239		111.266		162.932
Total plan outlay		71.239		111.266		162.932

Source: Planning Unit, Dzongkhag Administration, Samtse

Table 47. Dzongkhag 9th and 10th Five Year Plan Outlays, Samtse

Sectors	9 FYP			10 FYP		
	Current	Capital	Total	Current	Capital	Total
Civil	0.075	0.162	0.237	n.a	n.a	86.810
Religion & Culture				n.a	n.a	30.500
Agriculture	0.008	0.013	0.021	n.a	n.a	191.050
Livestock	0.098	0.011	0.108	n.a	n.a	22.800
Forestry	0.004	0.008	0.012	n.a	n.a	23.660
Education	0.135	0.147	0.282	n.a	n.a	467.440
Health	0.072	0.059	0.131	n.a	n.a	82.000
Urban development & housing	0.004	0.110	0.113	n.a	n.a	158.170
Roads	0.008	n.a	0.008	n.a	n.a	n.a
Bhutan post	n.a	n.a	0.000	n.a	n.a	n.a
Telecommunication	n.a	n.a	0.000	n.a	n.a	n.a
Power	0.008	n.a	0.008	n.a	n.a	n.a
Trade & industry	n.a	n.a	0.000	n.a	n.a	n.a
Total	0.323	0.510	0.833	n.a	n.a	1062.430
Total plan outlay	0.323	0.510	0.833	n.a	n.a	1062.430

Source: Dzongkhag Administration, Samtse

Table 48. Dzongkhag 9th and 10th Five Year Plan Expenditure, Samtse
(in million Nu.)

Sectors	9 FYP			10 FYP	
	Current	Capital	Total	Current	Capital
Total					
Civil	n.a	n.a	n.a	n.a	42.180
Religion & Culture	n.a	n.a	n.a	n.a	48.597
Education	n.a	n.a	n.a	n.a	112.919
Health	n.a	n.a	n.a	n.a	18.231
Agriculture	n.a	n.a	n.a	n.a	25.073
Livestock	n.a	n.a	n.a	n.a	6.572
Forestry	n.a	n.a	n.a	n.a	4.358
Urban development & housing	n.a	n.a	n.a	n.a	81.441
Roads	n.a	n.a	n.a	n.a	n.a
Bhutan post	n.a	n.a	n.a	n.a	n.a
Telecommunication	n.a	n.a	n.a	n.a	n.a
Power	n.a	n.a	n.a	n.a	n.a
Trade & industry	n.a	n.a	n.a	n.a	n.a
Total		n.a	n.a	n.a	339.371
Total plan expenditure	n.a	n.a	n.a	n.a	339.371

Source: Dzongkhag Administration, Samtse

Table 49. Gewog 9th and 10th Five Year Plan Outlays, Samtse

(In million Nu.)

Sectors	9 FYP		10 FYP			
	Current	Capital	Total	Current	Capital	Total
Civil	n.a	n.a	15.71	n.a	n.a	37.547
Agriculture	n.a	n.a	27.279	n.a	n.a	222.482
Livestock	n.a	n.a	10.354	n.a	n.a	21.202
Forestry	n.a	n.a	2.194	n.a	n.a	30.234
Health	n.a	n.a	7.237	n.a	n.a	75.933
Education	n.a	n.a	4.900	n.a	n.a	n.a
Urban development & housing	n.a	n.a	n.a	n.a	n.a	37.085
Religion & Culture	n.a	n.a	n.a	n.a	n.a	24.276
Roads	n.a	n.a	15.168	n.a	n.a	n.a
Bhutan post	n.a	n.a	n.a	n.a	n.a	n.a
Telecommunication	n.a	n.a	n.a	n.a	n.a	n.a
Power	n.a	n.a	n.a	n.a	n.a	n.a
Trade & industry	n.a	n.a	n.a	n.a	n.a	n.a
Total	n.a	n.a	82.842	n.a	n.a	448.759
Total plan outlay	n.a	n.a	82.842	n.a	n.a	448.759

Source: Planning Unit, Samtse Dzongkhag

Table 50. Gewog 9th and 10th Five Year Plan by Expenditures, Samtse

(In millionNu.)

Sectors	9 FYP			10 FYP		
	Current	Capital	Total	Current	Capital	Total
Civil	n.a	n.a	n.a	n.a	n.a	14.065
Agriculture	n.a	n.a	n.a	n.a	n.a	52.442
Livestock	n.a	n.a	n.a	n.a	n.a	9.98
Forestry	n.a	n.a	n.a	n.a	n.a	5.336
Education	n.a	n.a	n.a	n.a	n.a	0.3
Health	n.a	n.a	n.a	n.a	n.a	57.839
Urban development & housing	n.a	n.a	n.a	n.a	n.a	n.a
Roads & bridges	n.a	n.a	n.a	n.a	n.a	3.291
Religion & cultural	n.a	n.a	n.a	n.a	n.a	8.344
Telecommunication	n.a	n.a	n.a	n.a	n.a	n.a
Power	n.a	n.a	n.a	n.a	n.a	n.a
Trade & Industry	n.a	n.a	n.a	n.a	n.a	n.a
Total	n.a	n.a	n.a	n.a	n.a	151.597
Total plan outlay	n.a	n.a	n.a	n.a	n.a	151.597

Source:Dzongkhag Administration,Samtse

Table 51. Employed Persons by Age, Sex and Area of Residence, Samtse, (2008 ~ 2011)

(Number)

Details	2008	2009	2010	2011
Total	n.a	n.a	37,300	31,500
Male	n.a	n.a	19,700	16,900
Female	n.a	n.a	17,600	14,600
Rural Total	n.a	n.a	31,500	26,800
Male	n.a	n.a	16,300	14,300
Female	n.a	n.a	15,200	12,500
Urban Total	n.a	n.a	5,800	4,700
Male	n.a	n.a	3,400	2,600
Female	n.a	n.a	2,400	2,100

Source : Labour Force Survey, MoLHR

Table 52. Employment by Industries, Age Group and Sex, Samtse, (2009 ~2011)

Details	2009	2010	2011
Total labour force (Number)			
Total employed (%)	n.a	99.2	97.2
Male	n.a	99.5	98.8
Female	n.a	98.9	95.4
Unemployment rate	n.a	0.8	2.8
Total employed in Agriculture (%)			
Male	n.a	n.a	n.a
Female	n.a	n.a	n.a
Total employed in Industries (%)			
Male	n.a	n.a	n.a
Female	n.a	n.a	n.a
Total employed in Services (%)			
Male	n.a	n.a	n.a
Female	n.a	n.a	n.a
Total unemployed by area (%)			
Urban	n.a	n.a	n.a
Rural	n.a	n.a	n.a
Total un-employed by education (%)			
Total unemployed grade XII and above	n.a	n.a	n.a
Total unemployed below grade XII	n.a	n.a	n.a
Total under employed (%)			
Employed by age-group (%)			
15-17 years	n.a	n.a	n.a
18-24 years	n.a	n.a	n.a
25-64 years	n.a	n.a	n.a
65 years and above	n.a	n.a	n.a
Unemployed by age-group (%)			
15-17 years	n.a	n.a	n.a
18-24 years	n.a	n.a	n.a
25-64 years	n.a	n.a	n.a
65 years and above	n.a	n.a	n.a
Labor force participation rate (%)		82.1	70.2
Male participation rate	n.a	85.3	74.1
Female participation rate	n.a	79.1	66.2

Source : Labour Force Survey, MoLHR

Table 53. Child Labour, Samtse, (2010)

Percentage of Children by Involvement in Economic Activity and Household Chores During the Past Week, According to Age Groups, and Percentage of Children Age 5-14 Involved in Child Labour

Child labour	2010
Percentage of children age 5-11 involved in	
Economic activity	
Working outside household	
Paid work	1.5
Unpaid work	0.7
Working for family business	32.9
Economic activity for at least one hour	34.0
Household chores less than 28 hours	44.5
Household chores for 28 hours or more	0.6
Child labour	34.2
Number of children age 5-11	1207
Percentage of children age 12-14 involved in	
Economic activity	
Working outside household	
Paid work	3.5
Unpaid work	2.0
Working for family business	45.3
Economic activity less than 14 hours	36.6
Economic activity for 14 hours or more	10.0
Household chores less than 28 hours	75.5
Household chores for 28 hours or more	3.6
Child labour	12.8
Number of children age 12-14	447
Total child labour [1]	28.4
Number of children age 5-14 years	1654

Source: BMIS,2010

Table 54. Child Labour and School Attendance, Samtse, (2010)

Percentage of children age 5-14 years involved in child labour who are attending school, and percentage of children age 5-14 years attending school who are involved in child labour

Child Labour and School Attendance	2010
Percentage of children involved in child labour	28.4
Percentage of children attending school	83.2
Number of children age 5-14 years	1654
Percentage of child labourers who are attending school	82.0
Number of children age 5-14 years involved in child labour	470
Percentage of children attending school who are involved in child labour	28.0
Number of children age 5-14 years attending school	1376

Source: BMIS,2010

Table 55. Agriculture Production and Average Prices by COMmodities, Samtse, (2007 ~ 2010)

Details	2007	2008	2009	2010
Paddy				
Area (Acres)	11,544	n.a	7,547	8,454
Production (MT)	9,662	n.a	6,266	7,126
Price per Kg(Nu.)				13.30
Maize				
Area (Acres)	11,133	n.a	10,854	7,115
Production (MT)	9,460	n.a	8,624	5,588
Price per Kg(Nu.)				12.00
Wheat				
Area (Acres)	2,523	n.a	354	153
Production (MT)	1,408	n.a	167	108
Price per Kg(Nu.)				12.00
Barley				
Area (Acres)	1,091	n.a	76	31
Production (MT)	499	n.a	36	20
Price per Kg(Nu.)				n.a
Buckwheat				
Area (Acres)	2,090	n.a	662	271
Production (MT)	715	n.a	223	135
Price per Kg(Nu.)				n.a

Millet				
Area (Acres)	5,239	n.a	2,514	2,375
Production (MT)	1,894	n.a	974	1,161
Price per Kg(Nu.)				12.00
Fruits				
Apples				
Number of fruit bearing trees	N.A	N.A	N.A	N.A
Production (Kg)	N.A	N.A	N.A	N.A
Price per Kg(Nu.)	N.A	N.A	N.A	N.A
Oranges/ Mandarin				
Number of fruit bearing trees	278,426	n.a	109,731	128,373
Production (Kg)	7,862,000	n.a	2,679,000	3,214,000
Price per Kg(Nu.)				150.00
Banana				
Number of fruit bearing trees	31,280	n.a	36,399	32,542
Production (Kg)	892,000	n.a	460,000	439,000
Price per Dozen(Nu.)				15.00
Pear				
Number of fruit bearing trees	4,710	n.a	1,062	966
Production (Kg)	483,000	n.a	43,000	29,000
Price per Kg(Nu.)				n.a
Plum				
Number of fruit bearing trees	366	n.a	273	195
Production (Kg)	6,000	n.a	8,000	5,000
Price per Kg(Nu.)				n.a
Areca Nut				
Production (Pon)	3,665	n.a	2,420	3129000 1)
Production (Nu.)			363,000	n.a
Price per 80 Piece/ Pon(Nu.)			150	70.00
Vegetables and Spices				
Potato				
Production (kg)	986,000	n.a	154,000	98,000
Production (Nu.)			1,848,000	1,176,000
Price per Kg(Nu.)			12	12
Chili				
Production (kg)	108,000	n.a	40,000	109,000
Production (Nu.)			1,600,000	10,900,000
Price per Kg(Nu.)			40	100
Onion				

Production (kg)			n.a	12,000
Production (Nu.)			n.a	120,000
Price per Kg(Nu.)			n.a	10
Cabbage				
Production (kg)	105,000	n.a	18,000	19,000
Production (Nu.)			144,000	114,000
Price per Kg(Nu.)			8	6
Cauliflower				
Production (kg)	n.a	n.a	9,000	8,000
Production (Nu.)			180,000	80,000
Price per Kg(Nu.)			20	10
Asparagus				
Production (Bundles)	N.A	N.A	N.A	N.A
Production (Nu.)				
Price per bundle (Nu.)				
Tomato				
Production (Kg)	109,000	n.a	26,000	14,000
Production (Nu.)			520,000	84,000
Price per Kg(Nu.)			20	6
Carrot				
Production (Kg)	7,000	n.a	1,000	330
Production (Nu.)			40,000	9,900
Price per Kg(Nu.)			40	30
Egg Plant (Brinjal)				
Production (Kg)	83,000		n.a	8,000
Production (Nu.)			n.a	96,000
Price per Kg(Nu.)			n.a	12
Raddish				
Production (Kg)	286,000		n.a	157,000
Production (Nu.)			n.a	942,000
Price per Kg(Nu.)			n.a	6
Ginger				
Production (Kg)	5,259,000	n.a	1,718,000	2,458,000
Production (Nu.)		30,924,000	49,160,000	
Price per Kg(Nu.)			18	20
Cardamom				
Production (Kg)	763,000	n.a	342,000	986,717
Production (Nu.)				809,107,940
Price per Kg(Nu.)				820

Garlic				
Production (Kg)	13,000	n.a	8,000	19,000
Production (Nu.)			280,000	665,000
Price per Kg(Nu.)			35	35
Oil seeds and legumes				
Lentils				
Production (Kg)	n.a	n.a	n.a	321,000
Production (Nu.)				2,568,000
Price per Kg(Nu.)				8
Mustards				
Production (Kg)	408,000	n.a	229,000	92,000
Production (Nu.)			10,305,000	1,380,000
Price per Kg(Nu.)			45	15
Beans				
Production (Kg)	222,000	n.a	74,000	60,000
Production (Nu.)			1,332,000	1,200,000
Price per Kg(Nu.)			18	20

Source: Agriculture Statistics, 2010, MoAF

Note: 1 reported in Kg

Table 56. Agriculture Infrastructures and Other Facilities , Samtse, (2007 ~2010)

Details	2007	2008	2009	2010
Irrigation for agriculture				
Number of irrigation channels	3	n.a	4	4
Functional	3	n.a	4	4
Non-Functional	0	n.a	4	0
Total length of channels (Km)	9	n.a	8.54	9
Area covered by irrigation (Acres)	214	n.a	753.24	381
Number of households benefitted	245	n.a	215	177
Number of food processing units	n.a	n.a	n.a	
Number of agriculture mills ¹	15	n.a	20	28
Number of livestock product processing units	n.a	1	2	2
Number of farmer association/groups	3	2	22	33
Agriculture	0	2	4	8
Livestock	1	n.a	n.a	4
Forestry	2	n.a	18	21
Number of power tillers	9	7	7	11

Note: 1 Including two traditional mills

Source: Agriculture Sector, Samtse Dzongkhag

Table 57: Livestock Population by Types, Samtse, (2007~2010)

Details	2007	2008	2009	2010
Livestock (Number)				
Cattle	36,202	35,351	34,871	33,436
Local breed	34,099	32,435	31,901	30,180
Male	13,839	13,839	12,632	13,185
Female	20,260	18,596	19,269	16,995
Improved breed	2,103	2,916	2,970	3,256
Male	420	844	828	929
Female	1,683	2,072	2,142	2,327
Mithun	24	237	248	32
Bufallo	641	479	405	373
Male	143	196	167	149
Female	498	283	238	224
Horse	209	128	269	545
Local breed	209	127	268	332
Improved breed	n.a	1	1	213
Yak				
Male	N.A	N.A	N.A	N.A
Female	N.A	N.A	N.A	N.A
Sheep	2,582	3,900	3,996	2,694
Local breed	2,582	3,900	3,996	2,694
Improved breed	n.a	n.a	n.a	n.a
Pig	1,481	2,141	2,276	1,818
Local breed	1,404	1,840	1,892	1,600
Improved breed	77	301	384	218
Poultry	30,137	31,764	30,824	36,468
Local breed	29,879	31,694	30,630	28,571
Improved breed	258	70	194	7,897
Goat	5,440	13,798	13,693	14,314

Note: Mithun includes Bamin, Jatsa & Jatsam

Source: Livestock Sector, Samtse Dzongkhag

Table 58: Livestock Productions, Samtse, (2007~2010)

Details	2007	2008	2009	2010
Livestock products				
Fresh Milk (Liters)	562,961	1,524,293	1,329,405	1,946,834
Butter (Kg)	28,144	42,107	42,788	53,239
Fresh Cheese (Kg)	22,510	112,875	92,127	100,854
Processed cheese (kg)	0	0	0	0
Eggs (Dozen)	5,747	5,103	3,839	74,147
Fish (Kg)	1,186	730	969	2,399
Beef (Kg)	10,099	19,685	19,416	5,350
Pork (Kg)	17,508	32,247	32,215	24,298
Yak Meat (Kg)	N.A	N.A	N.A	N.A
Mutton (Kg)	19,287	36,658	36,399	18,807
Honey (Gm)	n.a	n.a	n.a	n.a
Chicken (Kg)	24,108	40,861	39,449	28,508

Source: Livestock Sector, Samtse Dzongkhag

Table 59. Forestry Production, Samtse, (2007 ~ 2010)

Details	2007	2008	2009	2010
Wood Forest Product1				
Log Form (Cft)	72,331.80	112,961.43	167,053.00	59,730.13
Fire wood (Cubic metres)	9,221.50	51,687.00	22,743.00	3,251.00
Flag Poles (Number)	1,123	905	1,201	643
Shinglap (Number of trees)	N.A	N.A	N.A	N.A
Cham (Number of trees)	10	1	18	32
Tsim (Number of trees)	151	91	177	229
Non-Wood Forest Product2				
Mushroom (Kg)	n.a	n.a	n.a	n.a
Mushroom (Nu.)	n.a	n.a	n.a	n.a
Medicinal and Aromatic plants (Kg)	n.a	n.a	n.a	n.a
Cordyceps (Kg)	n.a	n.a	n.a	n.a
Cordyceps (Nu.)	n.a	n.a	n.a	n.a
Sand (Truck load)	47	1,759	3,078	1,785
Stones (Truck load)	Nil	913	4,088	4,229
Bamboo (Number)	8,044	3,939	3,484	3,349
Cane (Bundles)				
Lemon grass (Kg)	n.a	n.a	n.a	n.a
Mining Sites (Number)	25	25	30	10
Quarry Sites	1	1	2	2
Municipal Waste Disposal Sites	n.a	n.a	1	1
Environmental Clearance Issued	2	9	11	18

Note: Cordyceps amount collected only for auction royalty charges.

Source: 1Divisional Forest, 2Thromsingla National Park, Samtse

Table 60. Electricity Generating Stations and Capacities, Samtse, (2009 & 2010)

Stations	2009			2010		
	Installed capacity (no.x MW)	Generating capacity (MW)	Peak generation (MU)	Installed capacity (no.x MW)	Generating capacity (MW)	Peak generation (MU)
list the name Diesel generation stations	n.a	n.a	n.a	n.a	n.a	n.a
list the name Other diesel stations	n.a	n.a	n.a	n.a	n.a	n.a
list the name	n.a	n.a	n.a	n.a	n.a	n.a

Source : Department of Energy, MoEA, Samtse

Table 61. Number of Households by Area, Samtse, (2009 ~ 2011)

Details	2009	2010	2011
Total number of household in Urban	2,415	2,456	2,496
Total number of household in Rural	10,066	10,234	10,402

Source: Projected figure based on PHCB 2005 using ratio method

Table 62. Number of Building Permits issued by Towns, Samtse, (2009 ~ 2011)

new buildings	2009	2010	2011
Samtse			

Source: Dzongkhag Municipal, Samtse Dzongkhag

Table 63. Number of Establishment by Type and Size, Samtse, (2009 ~ 2011)

Details	2009	2010	2011
Industries by type (Number)			
Agro based	17	5	3
Forestry based	12	6	3
Mineral based	31	9	5
Others	13	77	43
Industries by scale (Number)			
Large	8	1	n.a
Medium	9	7	n.a
Small	33	13	11
Cottage	13	76	43
Contract firms (Number)			
Large	1	n.a	n.a
Medium	1	1	n.a
Small	49	22	9

Source: Regional Trade Office, Samtse

Table 64. Number of Wholesale, Retail Trade and Industrial Licenses Issued, Samtse, (2007 ~ 2011)

Details	(Number)				
	2007	2008	2009	2010	2011
Trade and Industries					
Micro & retail trade licences issued	665	796	981	1,240	1,419
Micro & retail trade licences in operation	460	758	761	961	1,140
Wholesale trade licences issued	5	8	10	12	17
Wholesale trade licences in operation	3	3	3	9	14
Services licences issued	553	584	625	699	742
Services licences in operation	319	338	377	416	459
Manufacturing licenses issued	52	65	73	96	107
Manufacturing licenses in operation	20	30	38	54	65

Source: Regional Trade Office, Samtse

Table 65. Number of Public Transport and Facilities, Samtse, (2007 ~ 2011)

Details	(Number)				
	2007	2008	2009	2010	2011
Public Service Transport					
Bus	5	5	8	9	12
Taxi	12	16	20	30	38
Motor vehicle registration					
Heavy	n.a	n.a	n.a	n.a	n.a
Medium	n.a	n.a	n.a	n.a	n.a
Small	n.a	n.a	n.a	n.a	n.a
Two wheeler	n.a	n.a	n.a	n.a	n.a
Auto Mobile workshop ³	n.a	n.a	n.a	n.a	1
Bus stations	n.a	n.a	n.a	n.a	n.a

Source: RSTA Regional Office, Samtse

Table 66: Roads and Bridges, Samtse, (2007~2011)

Details	2007	2008	2009	2010	2011
Roads (Length in Km)					
Farm roads ¹	16.20	32.98	52.00	59.00	75.42
Feeder roads ²	54.90	51.60	51.60	51.60	51.60
Forest roads ¹	7	7	18	18	18
Highways/Dzongkhag roads	86.00	87.65	87.65	87.65	87.65
Bridges (Number)					
Suspension bridge ¹	19	19	19	19	19
Suspended ¹	n.a	n.a	n.a	n.a	n.a
Bailey bridges ²	14	14	14	14	14
Traditional bridges ¹	n.a	n.a	n.a	n.a	n.a

Source: 1Dzongkhag Engineering Section,2Department of Roads, Samtse

Table 67. Telecommunications, Samtse, (2007 ~ 2011)

	(Number)				
Telecommunications	2007	2008	2009	2010	2011
Households with fixed telephone connections	1,300	1,082	1,048	970	855
Tashi cell users	N.A	N.A	3,000	5,000	9,000
B.mobile users	3,029	4,500	7,500	9,900	11,200
Community information centres	3	3	3	3	4
Gewogs accessible to mobile services	8	12	15	15	15
Households with internet access	135	145	257	325	355
Bhutan post office	4	4	4	4	4

Source: Gewog Administration Office & Regional Office, Samtse Dzongkhag.

Figures for B-mobile & Tashi Cell is for SIM cards issued

Table 68. Number of Establishment in Bnking and Finance, Samtse, (2009 ~ 2011)

	(number)		
Number of establishments	2009	2010	2011
RICBL	1	1	1
BDBL	1	2	2
BNB	n.a	n.a	n.a
Druk PNB	n.a	n.a	n.a
T Bank	n.a	n.a	n.a
Bhutan insurance limited	n.a	n.a	n.a
BOB	2	2	2

Source: Financial Institutions, Samtse Dzongkhag

Table 69. Number of account holders in Banks, Samtse, (2010)

Number of facilities	Number of account holders (2010)				
	Loan	savings	current	fixed deposit	recurring deposit
RICB	99	0	n.a	n.a	n.a
BDBL	1042	1157	20	49	57
BNB	0	0	0	0	0
PNB	0	0	0	0	0
T Bank	0	0	0	0	0
Bhutan insurance limited	0	0	0	0	0
BOB	1320	9045	859	559	872

Source: Financial Institutions, Samtse Dzongkhag

Table 70. Number of Administrative Units, Samtse, (2007 ~ 2011)

Details	2007	2008	2009	2010	2011
Administration (Number)					
Drungkhags	2	2	2	2	2
Gewogs	15	15	15	15	15
Chiwogs	228	228	228	228	228
Villages	323	323	323	323	323
Households	11,634	11,634	11,634	11,634	12,219
Towns	3	3	3	3	3
Number of Police stations	7	7	7	7	7

Table 71. Recreation, Tourist Visitors and Accommodation, Samtse, (2007 ~2011)

Details	2007	2008	2009	2010	2011
Number of children park	N.A	N.A	N.A	N.A	N.A
Number of hotels					
Number of restaurants					
Number of drayangs	N.A	N.A	N.A	N.A	N.A
Number of discotheques	N.A	N.A	N.A	N.A	N.A
Number of tourist visitors	N.A	N.A	N.A	N.A	N.A

Source: Administration Office, Samtse Dzongkhag

National Statistics Bureau
ROYAL GOVERNMENT OF BHUTAN
P.O. Box No. 338 Thimphu
Telephone No: +975-2-322753/333296/325402
Fax: +975-2-323069

www.nsb.gov.bt

ISBN-978-99936-28-11-8