



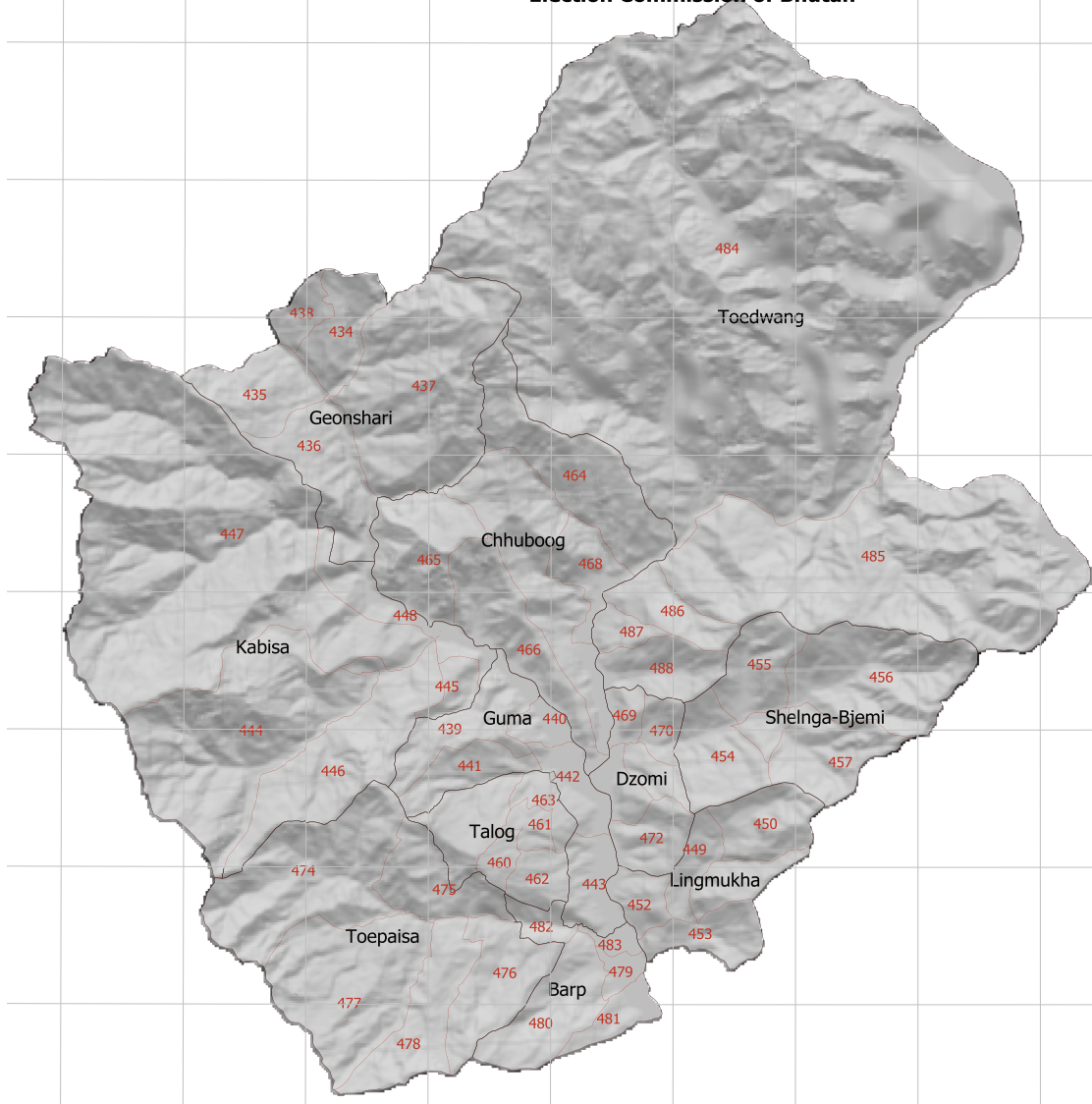
# ANNUAL DZONGKHAG STATISTICS 2011



**Dzongkhag Administration  
PUNAKHA**



**Punakha Gewogs and Chiwogs as per the final delimitation order issued  
by the  
Election Commission of Bhutan**



© 2011

National Statistics Bureau

All rights reserved

Published by

National Statistics Bureau

Contact

National Statistics Bureau

PO Box No. 338

Telephone: +975-2-322753/333296

Fax: +975-2-323069

Website: [www.nsb.gov.bt](http://www.nsb.gov.bt)

Statistics Unit

Punakha Dzongkhag

Telephone: +975-02-584417

Fax: +975-02-584121

Email: [jampel\\_2001@yahoo.com](mailto:jampel_2001@yahoo.com)

Second Issue

Catalogue No. 104

## Contents

	<b>page</b>
<b>Preface</b>	<b>i</b>
Background of Dzongkhag	ii
Abbreviations	iii
<b>Section 1. Population (Tables 1-2)</b>	<b>1-2</b>
Population by Age-Group and Sex	1
Population Density and Sex Ratio	2
<b>Section 2. Births, Deaths, Marriages, and Divorces (Tables 3-10)</b>	<b>3-6</b>
Total number Live Births, Deaths, Marriages, and Divorces	3
Adolescent Birth Rate and Total Fertility Rate	3
Early Childbearing	4
Use of Contraception	4
Antenatal Care Provider	5
Number of Antenatal Care Visits	5
Assistance During Delivery	6
Place of Delivery	6
<b>Section 3. Health and Nutrition (Tables 11-26)</b>	<b>7-16</b>
Health Infrastructures, Facilities and Personnel	7
Hospital Admission and Average Length of Stay	8
Number of Surgeries	8
Number of Dental Services	8
Number of Top Ten Morbidity	9
Child Disability	9
Nutritional Status of Children	10
Initial Breastfeeding	10
Duration of Breastfeeding	11
Low Birth Weight Infants	11
Neonatal Tetanus Protection	11
Solid Fuel Use	12
Use of Improved Water Sources	13
Household Water Treatment	14
Time to Source of Drinking Water	15
Types of Sanitation Facilities	16

<b>Section 4. Education (Tables 27-34)</b>	<b>17-24</b>
Number of Schools, Institutions, Teachers and Students	17
School Enrolment by Grade and Sex	20
Student by Age-Group, Sex and by Level	22
Literacy Among Young Women	23
School Readiness	23
Primary School Entry	24
Children Reaching Last Grade of Primary School	24
Education Gender Parity	24
<b>Section 5. Law Enforcement, Courts, and Prisons (Tables 35-38)</b>	<b>25-27</b>
Summary of Crime Reports by Nature of Crime	25
Monthly Motor Vehicle Accidents	26
Causes of Motor Vehicle Accidents	26
Attitudes Toward Domestic Violence	27
<b>Section 6. Geography and Environment (Tables 39-43)</b>	<b>27-29</b>
Land Area and Damages Caused by Types	27
Average Monthly Temperature	28
Average Monthly Rainfall	28
Percentage of Forest Coverage, Number of Protected Spring and Lakes	29
Disposal of Childs Faeces	29
<b>Section 7. Elections and Local Government (Tables 44-45)</b>	<b>30-31</b>
Parliamentarians and Local Government Representatives	30
Parliamentarians and Local Government election expenditures	31
<b>Section 8. Royal Government Finances and Employment (Tables 46-50)</b>	<b>32-34</b>
Government Finance Expenditures	32
Dzongkhag 9th & 10th Five Year Plan Outlays	33
Dzongkhag 9th and 10th Five Year Plan Expenditure	33
Gewog 9th and 10th Five Year Plan Outlays	34
Gewog 9th and 10th Five Year Plan by Expenditures	34
<b>Section 9. Labor Force, Employment, and Earnings (Tables 51-54)</b>	<b>35-38</b>
Employed Persons by Age, Sex and Area of Residence	35
Employment by Industries, Age-Group and Sex	36
Child Labour	37
Child Labour and School Attendance	38

<b>Section 10. Prices (Tables 55-55)</b>	<b>38-41</b>
Agricultural Production & Average prices by commodities	38
<b>Section 11. Agriculture (Tables 56-58)</b>	<b>41-43</b>
Renewable Natural Resources	41
Agricultural Production by Types	41
Livestock Population by Types	42
Livestock Productions	43
<b>Section 12. Forestry, Fishing and Mining (Tables 59-59)</b>	<b>44-44</b>
Forestry Productions	44
<b>Section 13. Energy and Utilities (Tables 60-60)</b>	<b>44-44</b>
Electricity Generating Stations And Their Capacities	44
<b>Section 14. Construction and Housing (Tables 61-62)</b>	<b>45-45</b>
Number of Households by Area	45
Number of Building Permits issued by Towns	45
<b>Section 15. Manufactures (Tables 63-63)</b>	<b>45-45</b>
Number of Establishment by Type and Size	45
<b>Section 16. Wholesale and Retail Trade (Tables 64-64)</b>	<b>46-46</b>
Number of Wholesale, Retail Trade and Industrial licenses issued	46
<b>Section 17. Transportation (Tables 65-66)</b>	<b>46-46</b>
Number of Public Transport and Facilities	46
Roads and Bridges	47
<b>Section 18. Information and Communications (Tables 67-67)</b>	<b>47-47</b>
Telecommunications	47
<b>Section 19. Banking, Finance, and Insurance (Tables 68-69)</b>	<b>47-48</b>
Number of Establishment in Banking and Finance	47
Number of account holders in Banks	48
<b>Section 20. Arts, Recreation, Accommodation and Monuments (Tables 70-71)</b>	<b>48-48</b>
Number of Administrative Units	48
Recreation, Tourist Visitors and Accommodation	48





## Preface

The Annual Dzongkhag Statistics of Punakha is the second in the series of publications. It attempts to provide comprehensive statistics of Punakha Dzongkhag and will be published annually.

The report contains statistics on demographic and socio-economic, environment, culture, local governance and infrastructures of the Dzongkhag. The statistical data for this publication are collected and compiled from various sectors and through primary sources.

We hope that this report will serve as a source of information and guiding tool for micro-level planning and decision-making in the Dzongkhag. Statistics unit, Punakha Dzongkhag would like to thank and acknowledge the support and cooperation of all sector heads concerned for providing timely information for this report. Without their support, this publication would not have been possible. Through this initiative, we also hope that the maintenance of sectoral information and updation in the Dzongkhag will become more systematic and efficient henceforth.

Since this report is the Second publication and with information source being from numerous sectors, we expect there may be certain deficiencies in terms of coverage and updation. However, there will be continuous efforts made to improve its coverage and quality in our future publications. Your comments and suggestions in this regard will be highly appreciated.

National Statistics Bureau  
Thimphu

## Background

Punakha Dzongkhag has a total area of 1095.99 sq. Km. The Dzongkhag consists of eleven Geogs, namely: Chhubu, Dzomi, Goenshari, Guma, Kabjisa, Lingmukha, Shenga Bjimi, Talo, Toewang, Barb and Toep. The temperature varies from 35 degree Celsius during summers to -4 degree Celsius during winters. It receives an average annual rainfall of 83 mm. The altitude of the Dzongkhag ranges from 1200 metres to 4800 metres.

The projected population of the Dzongkhag for the year 2010 is 25, 650 which consists of 13,002 male and 12,648 female.

The dzongkhag has total forest coverage of about 87,978 hectares, out of which 30% is Coniferous forest, 42% is Broad-leaved, scrub forest is 2% and pasture is 3%. 22% of the total area is cultivable land.

The main cereal crops grown in the Dzongkhag are paddy, wheat, maize, and mustard. Fruits such as Persimmon, Guavas, Peaches, Plums, Pears and even Sub-tropical Apples are grown here. but citrus fruits being the main fruits grown in the Dzongkhag. The vegetables like Chilies, Raddish, Cabbages, Brinjals, Green leaved vegetables and Tomatoes are also cultivated. Dzongkhag also has a relatively good network of feeder and farm roads that provide easy access to market.

The Dzong which is located at the confluence of Phochu and Mochu rivers was built by Zhabdrung Ngawang Namgyel in 1637. It was named as Pungthang Dechen Phodrang Dzong and had been the winter capital until 1955. It is now the winter residence of the Je Khenpo and the Central Monk Body. The Machey (Sacred embalmed body) of Zhabdrung Ngawang Namgyal is preserved and guarded with great devotion and reverence in the Machey Lhakhang. The Punakha Dzong has always been an attraction for tourists because of its rich historical background.

## ABBREVIATIONS

%:	Percent	HSS:	Higher Secondary School
< :	Less than	Inst:	Institute
> :	Greater than	Kg:	Kilogram
AIDS:	Acquired Immune Deficiency Syndrome	LFS:	Labor Force Survey
Avg:	Average	LSS:	Lower Secondary School
BHU:	Basic Health Unit	Max:	Maximum
BLSS:	Bhutan Living Standard Survey	Min:	Minimum
Cft:	Cubic Feet	MSS:	Middle Secondary School
CPS:	Community Primary school	n.a:	Not Available
DPTH:	Diphtheria Parthusis Tetanus Hepatitis B	N.A:	Not Applicable
DYT:	Dzongkhag Yargye Tsogdue	NFE:	Non Formal Education
FYP:	Five Year Plan	Nu:	Ngultrum
GDP:	Gross Domestic Product	ORC:	Outreach Clinic
GIS:	(Infrastructure mapping): Geographical Infrastructure System	PAR:	Poverty Analysis Report
Gm:	Gram	PHCB:	Population and Housing Census of Bhutan
GYT:	Gewog Yargye Tshogchung	PP:	Pre Primary
HIV:	Human Immune Virus	PS:	Primary School
Hr:	Hour	Pvt:	Private
		Qty:	Quantity
		Sq. Km:	Square Kilometer
		SYB:	Statistical Year Book
		TV:	Television



**Table 1. Population by Age-Group and Sex, Punakha, (2005 ~ 2011)**

Age-group	2005	2006	2007	2008	2009	2010	2011
Total	17,715	23,890	24,323	24,762	25,205	25,650	26,096
0-4	1,714	2,529	2,695	2,860	3,023	3,183	3,169
5-9	2,060	2,486	2,426	2,377	2,336	2,304	2,471
10-14	2,087	2,675	2,641	2,599	2,555	2,511	2,448
15-19	2,625	2,629	2,646	2,658	2,663	2,656	2,638
20-24	1,614	2,468	2,459	2,519	2,542	2,564	2,586
25-29	1,320	2,212	2,262	2,307	2,349	2,388	2,424
30-34	1,067	1,839	1,907	1,977	2,045	2,110	2,168
35-39	918	1,536	1,581	1,627	1,678	1,735	1,799
40-44	778	1,248	1,296	1,347	1,398	1,448	1,496
45-49	823	1,028	1,057	1,089	1,124	1,163	1,208
50-54	660	848	872	898	962	954	983
55-59	537	696	713	731	752	773	797
60-64	546	562	574	588	602	618	635
65+	966	1,132	1,157	1,185	1,213	1,244	1,276
Male	8,989	12,175	12,377	12,584	12,793	13,002	13,214
0-4	838	1,233	1,315	1,396	1,477	1,556	1,550
5-9	1,071	1,219	1,188	1,162	1,141	1,124	1,206
10-14	1,033	1,322	1,302	1,280	1,257	1,233	1,200
15-19	1,305	1,318	1,320	1,322	1,321	1,314	1,302
20-24	912	1,276	1,282	1,285	1,288	1,291	1,295
25-29	632	1,163	1,187	1,208	1,226	1,241	1,252
30-34	514	979	1,012	1,047	1,080	1,111	1,140
35-39	453	820	845	869	895	924	957
40-44	395	658	685	714	743	771	798
45-49	401	536	552	569	588	610	635
50-54	357	440	453	467	481	496	511
55-59	273	359	368	377	388	399	411
60-64	292	287	294	300	308	316	324
65+	513	564	575	588	601	615	630

Female	8,726	11,715	11,946	12,178	12,411	12,648	12,883
0-4	876	1,296	1,380	1,463	1,546	1,627	1,620
5-9	989	1,267	1,239	1,215	1,195	1,180	1,264
10-14	1,054	1,353	1,338	1,319	1,298	1,278	1,247
15-19	1,320	1,312	1,325	1,336	1,342	1,342	1,336
20-24	702	1,192	1,214	1,235	1,255	1,274	1,291
25-29	688	1,048	1,075	1,099	1,123	1,147	1,171
30-34	553	861	895	930	965	998	1,028
35-39	465	716	737	758	783	810	842
40-44	383	591	611	633	655	677	698
45-49	422	492	506	520	536	554	573
50-54	303	408	419	432	445	458	472
55-59	264	336	345	354	364	374	385
60-64	254	274	281	287	295	302	310
65+	453	570	582	597	612	627	645

Note: Figures for the year 2006 onwards are based on the projected population

Source: Population & Housing Census of Bhutan, 2005

**Table 2. Population, Density and Sex Ratio, Punakha, (2005 ~ 2011)**

Details	2005	2006	2007	2008	2009	2010	2011
Population (Number)	17,715	23,890	24,323	24,762	25,205	25,650	26,096
Population density (Persons per Sq. Km)	18	25	25	22	23	23	24
Population sex ratio	103	104	104	103	103	103	103

Source : Dzongkhag Population Projection 2006-2015

**Table 3. Total Number of Live Births, Deaths, Marriages and Divorces, Punakha, (2008 ~ 2011)**

Age-group	2008	2009	2010	2011
Live births	341	297	408	n.a
Male	n.a	n.a	n.a	n.a
Female	n.a	n.a	n.a	n.a
Total deaths	85	38	76	n.a
Male	n.a	n.a	n.a	n.a
Female	n.a	n.a	n.a	n.a
Infant deaths	n.a	n.a	n.a	n.a
Male	n.a	n.a	n.a	n.a
Female	n.a	n.a	n.a	n.a
Marriage Certificate issued	n.a	n.a	n.a	n.a
Male	n.a	n.a	n.a	n.a
Female	n.a	n.a	n.a	n.a
Divorces	n.a	n.a	n.a	n.a
Male	n.a	n.a	n.a	n.a
Female	n.a	n.a	n.a	n.a

Source: Dzongkhag Health Sector & Court, (Punakha Dzongkhag ) Dzongkhag

**Table 4. Adolescent Birth rate and Total fertility rate, Punakha, (2010)**

Details	2010
Adolescent birth rate (age specific fertility rate for women age 15-19)	35
Total fertility rate	2.8

Source : BMIS, 2010

**Table 5. Early Childbearing, Punakha, (2010)**

Percentage of women age 15-19 who have had livebirth or who are pregnant with the first child; percentage of women age 15-19 who have begun childbearing before age 15, and the percentage of women age 20~24 who have had a live birth before age 18.

Details	2010
% of women age 15~19	
Have had a live birth	7.5
Are pregnant with first child	3.1
Have begun childbearing	10.6
Have had a live birth before 15	0.6
Number of women age 15~19	70.0
% of women age 20~24 who have had a live birth before age 18	11.5
Number of women age 20~24	74.0

Source : BMIS, 2010

**Table 6. Use of Contraception, Punakha, (2010)**

Percentage of Women age 15~49 Years Currently Married or in Union Who are using (or whose partner is using) a Contraceptive Method.

Details	2010
Not using any method	38.8
Percent of women (currently married or in union) who are using	
Female sterilization	11.1
Male sterilization	13.7
IUD	2.5
Injectables	20.2
Implants	0.2
Oral contraceptive Pill	7.2
Male condom	5.8
Female condom	0.2
Foam/ jelly	0.0
Lactational amenorrhoea method (LAM)	0.0
Periodic abstinence/ rhythm	0.0
Withdrawal	0.0
Other	0.4
Any modern method	60.8
Any traditional method	0.4
Any method	61.2
Number of women currently married or in union	342.0

Source : BMIS, 2010



**Table 7. Antenatal Care Provider, Punakha, (2010)**

Percent Distribution of Women Aged 15~49 Who Gave Birth in The Survey by Type of Personnel Providing Antenatal Care.

Details	2010
Persons providing antenatal care	
Doctor	32.3
Nurse/ midwife	61.4
HA/ BHW	4.4
Assistant clinical officer (ACO)	0.0
Traditional birth attendant	0.0
Village health worker	0.4
Other/ missing	0.0
No antenatal care received	1.6
Total	100.0
At Least once by skilled personnel	98.0
Number of women who gave birth in the preceding 2 years	100.0

Source : BMIS, 2010

**Table 8. Number of Antenatal Care Visits, Punakha, (2010)**

Percentage of Women Who had a Live Births During the Two Years Preceding the Survey by Number of Antenatal Care Visits by Any Provider.

Details	2010
Percent of women who had	
No antenatal care visits	1.6
1 Visits	2.2
2 Visits	6.2
3 Visits	12.9
4 or more visits	77.1
Missing/ DK	0
Total	100
Number of women who gave birth in the preceding 2 years	100

Source : BMIS, 2010

**Table 9. Assistance During Delivery, Punakha, (2010)**

Percent Distribution of Women age 15-49 Who had a Live Birth in the Two Years Preceding the Survey by Person Assisting, at Delivery and Percentage of Births Delivered by C-section.

Details	2010
Person assisting at delivery	
Doctor	26.2
Nurse / Midwife	50.4
HA/BHW	1.7
Asst. clinical officer (ACO)	0
Traditional birth attendant	0
Village health worker	0
Relative / friend	11.1
Other/missing	10.6
No attendant	0
Total	100
Any skilled personnel	78.3
Percent delivered by C-section	10.7
Number of women who gave birth in preceding two years	100

Source : BMIS, 2010

**Table 10. Place of Delivery, Punakha, (2010)**

Percent Distribution of Women age 15-49 With a Birth in Two Years Preceding the Survey by Place of Delivery.

Details	2010
Place of delivery	
Public sector health facility	77.9
Private sector health facility	0
Home	22.1
Other	0
Total	100
Delivered in health facility [1]	77.9
Number of women who gave birth in preceding two years	100

Source : BMIS, 2010

**Table 11. Health Infrastructures, Facilities and Personnel, Punakha, (2007 ~ 2010)**

Details	2007	2008	2009	2010
Number of hospitals	1	1	1	1
Number of BHUs	5	6	6	6
BHU grade I	0	0	0	0
BHU grade II	5	6	6	6
Number of ORCs	8	8	9	10
Number of indigenous units	1	1	1	1
Number of doctors	3	3	3	4
Number of hospital/BHU beds	40	40	40	52
Persons per doctor	8,108	8,254	8,402	6,413
Persons per hospital bed	608	619	630	493
Total morbidity attendance	na	na	na	na
Health assistants	12	15	17	15
Basic health workers	8	5	6	6
Sister and nurses	12	12	11	12
Technicians	9	10	10	13
Indigenous dungtsho	1	1	1	1
Indigenous compounders/Menpas	1	1	1	1
Malaria workers	0	0	0	0
Village health workers	52	52	44	44
Number of children immunized	570	435	464	463
Polio	277	315	355	343
DPTH	409	408	426	471
Measles	562	438	478	469
BCG	337	382	374	373
Others	0	0	0	0

Source: Dzongkhag Health Sector, Punakha Dzongkhag

**Table 12. Hospital Admission and Average Length of Stay, Punakha, (2007 ~ 2010)**

Average admission	2007	2008	2009	2010
Hospital admission	3477	1969	2036	1878
Total	3477	1969	2036	1870
Patient days	7401	7686	8034	8670
Average days	2.1	3.9	3.9	4.6
BHU admission	65	74	178	175

Source : Annual Health Bulletin, MoH

**Table 13. Number of Surgeries, Punakha, (2007 ~ 2010)**

Details	2007	2008	2009	2010
Surgeries				
Caesarian Section	7	6	3	1
General Abdominal	11	26	2	4
General Others	47	103	21	39
Orthopaedic extremities	3	11	0	8
Orthopaedic Others	0	0	1	0
Gynaecology	6	29	3	0
ENT	1	0	0	34
Eye	0	46	27	0

Source : Annual Health Bulletin, MoH

**Table 14. Number of Dental Services, Punakha, (2007 ~ 2010)**

Dental Services	2007	2008	2009	2010
Prophylaxis	127	166	313	423
Scaling	0	6	11	15
Fillings	423	453	723	582
Extractions	886	1692	1083	963
Others	1143	1250	1451	1037

Source : Annual Health Bulletin, MoH

**Table 15: Number of Top Ten Morbidity, Punakha, (2007~ 2010)**

Priority health problem/ Disease	2007	2008	2009	2010
Diarrhoea	2,675	2,987	3,014	2,757
Conjunctivitis	924	1,147	1,160	1,493
Dysentery	1,960	1,864	1,579	1,333
Typhoid	148	120	108	0
Sexually transmitted disease, excluding HIV/AIDS	59	106	142	49
Diabetes	n.a	n.a	n.a	n.a
Tuberculosis	610	29	38	28
Early syphilis	2	2	7	0
Cholera	0	0	8	0
Tetanus	0	0	0	0
Diphtheria	0	0	0	0
Pertussis	0	0	0	0

Source : Dzongkhag Health Sector, Punakha Dzongkhag

**Table 16. Child Disability, Punakha, (2010)**

Child Disability	2010
Percentage of children aged 2-9 years with reported disability by type of disability	
Delay in sitting standing or walking	2.5
Difficulty seeing, either in the daytime or at night	0.9
Appears to have difficulty hearing	2.9
No understanding of instructions	3.1
Difficulty in walking moving, moving arms, weakness or stiffness	2.3
Have fits, become rigid, lose consciousness	2.2
Not learning to do things like other children his/her age	3.9
No speaking cannot be understood in words	4.6
Appears mentally backward, dull, or slow	4.2
Speech is not normal	10.4
Number of children aged 3-9 years	361.0
Cannot name at least one object	18.1
Number of children aged 2 years	41.0
Percentage of children 2-9 years of age with at least one reported disability*	23.0
Number of children aged 2-9 years	401

Source: BMIS, 2010

**Table 17. Nutritional Status of Children, Punakha, (2010)**

Percentage of children under age 5 by nutritional status according to three anthropometric indices: weight for age, height for age, and weight for height.

Nutritional Status	2010
Weight for age: % below -2 sd [1]	11.4
Weight for age: % below -3 sd [2]	2.0
Weight for age: Mean Z-Score (SD)	-0.7
Weight for age: Number of children	203.0
Height for age: % below -2 sd [3]	20.7
Height for age: % below -3 sd [4]	6.2
Height for age: Mean Z-Score (SD)	-0.9
Height for age: Number of children	193.0
Weight for height: % below -2 sd [5]	4.7
Weight for height: % below -3 sd [6]	2.2
Weight for height: % above +2 sd	3.3
Weight for height: Mean Z-Score (SD)	-0.1
Weight for height: Number of children	197.0

Source: BMIS, 2010

**Table 18. Initial Breastfeeding, Punakha, (2010)**

Percentage of Last-Born Children in the 2 Years Preceding the Survey Who Were Ever Breastfed, Percentage Who Were Breastfed Within One Hour of Birth and Within One Day of Birth, and Percentage Who Received a Prelacteal Feed.

Initial Breastfeeding	2010
Percentage ever breastfed	99.1
Percentage who were first breastfed: Within one hour of birth	64.2
Percentage who were first breastfed: Within one day of birth	94.3
Percentage who received a prelacteal feed	9.8
Number of last-born children in the two years preceding the survey	100

Source: BMIS, 2010

**Table 19. Duration of Breastfeeding, Punakha, (2010)**

Median duration of any breastfeeding, exclusive breastfeeding, and predominant breastfeeding among children age 0-35 months.

Duration of Breastfeeding	2010
Median duration (in months) of	
Any breastfeeding	23.1
Exclusive breastfeeding	1.2
Predominant breastfeeding	1.8
Number of children age 0-35 months	141

Source: BMIS, 2010

**Table 20. Low Birth Weight Infants, Punakha, (2010)**

Percentage of Last-Born Children in the 2 Years Preceding the Survey That are Estimated to Have Weighed Below 2500 Grams at Birth and Percentage of Live Births Weighed at Birth.

Low Birth Weight Infants	2010
Percent of live births	
Below 2500 grams	9.1
Weighed at birth	88.0
Number of live births in the last 2 years	100.0

Source: BMIS, 2010

**Table 21. Neonatal Tetanus Protection, Punakha, (2010)**

Percentage of women age 15-49 years with a live birth in the last 2 years protected against neonatal tetanus.

Neonatal Tetanus Protection	2010
Percentage of Women Who Received at Least 2 Doses During Last Pregnancy	44.8
Percentage of women who did not receive two or more doses during last pregnancy but received	
2 doses, the last within prior 3 years	8.2
3 doses, the last within prior 5 years	0.0
4 doses, the last within prior 10 years	0.0
5 or more doses during lifetime	0.0
Protected against tetanus [1]	53.0
Number of women with a live birth in the last 2 years	100.0

Source: BMIS, 2010

**Table 22. Solid Fuel Use, Punakha, (2010)**

Percentage Distribution of Household Members According to Type of Cooking Fuel Used by the Household, and Percentage of Household Members Living in Households Using Solid Fuels for Cooking.

Solid Fuel Use	2010
Percentage of household members in households using	
Electricity	73.8
Liquefied Petroleum Gas (LPG)	13.8
Kerosene	0.0
Coal	0.0
Wood	12.4
Straw/Shrubs/Grass	0.0
No food cooked in household	0.0
Other	0.0
Total	100.0
Solid fuels for cooking	12.4
Number of household members	2549

Source: BMIS, 2010



**Table 23. Use of Improved Water Sources, Punakha, (2010)**

Percent distribution of household population according to main source of drinking water and percentage of household population using improved drinking water sources.

Water Sources	2010
Main source of drinking water	
Improved sources	
Piped into dwelling	20.9
Piped into compound	50.0
Piped to neighbor	4.9
Public outdoor tap	14.6
Protected well	0.3
Spring	0.3
Rainwater collection	0.1
Bottled water	0.0
Unimproved sources	
Unprotected well	0.5
Unprotected spring	2.6
Tanker-truck	0.0
Cart with samll tank/drum	0.0
Surface water (river,stream, dam, lake,pond,canal,irrigation channel)	5.5
Other	0.3
Total	100.0
Percentage using improved sources of drinking water	91.0
Number of household members	2549.0

Source: BMIS, 2010

**Table 24. Household Water Treatment, Punakha, (2010)**

Percentage of Household Population by Drinking Water Treatment Method Used in the Household, and for Household Members Living in Households Where an Unimproved Drinking Water Source is Used, the Percentage Who are Using an Appropriate Treatment Method

Water Treatment	2010
Water treatment method used in the household	
None	23.7
Boil	58.2
Add bleach / chlorine	0.0
Strain through a cloth	1.9
Use water filter	25.3
Solar disinfection	0.1
Let it stand and settle	13.5
Other	0.0
Don't know	0.0
Number of household members	2549.0
Percentage of household members in households using unimproved drinking water sources and using an appropriate water treatment method [1]	34.6
Number of household members in households using unimproved drinking water sources	228.0

Source: BMIS, 2010

**Table 25. Time to Source of Drinking Water, Punakha, (2010)**

Percent Distribution of Household Population According to Time to go to Source of Drinking Water, Get Water and Return, for Users of Improved and Unimproved Drinking Water Sources

Time to Source of Drinking Water	2010
Time to source of drinking water	
Users of improved drinking water sources	
Water on premises	86.2
Less than 30 minutes	4.9
30 minutes or more	0.0
Missing/DK	0.0
Users of unimproved drinking water sources	
Water on premises	2.7
Less than 30 minutes	5.4
30 minutes or more	0.7
Missing/DK	0.1
Total	100.0
Number of household members	2549.0

Source: BMIS, 2010

**Table 26. Types of Sanitation Facilities, Punakha, (2010)**

Percent Distribution of Household Population According to Type of Toilet Facility Used by the Household

Types of Sanitation facilities	2010
Type of toilet facility used by household	
Improved sanitation facility	
Flush toilet	0.1
Flush to septic tank(Without soak pit)	28.7
Flush to pit (latrine)	2.5
Flush to unknown place/not sure/DK where	0.2
Flush to septic tank (with soak pit)	6.6
Ventilated Improved Pit latrine (VIP)	0.0
Pit latrine with slab	26.5
Composing toilet	0.1
Unimproved sanitation facility	
Flush to somewhere else	0.4
Pit latrine without slab /open pit	29.9
Long drop latrine	0.5
Bucket	0.0
Other	0.4
Missing	0.0
Open defecation (no facility, bush, field)	
No facility,bush, field	4.2
Total	100.0
Number of household members	2549.0

Source: BMIS, 2010

**Table 27. Number of Schools, Institutions, Teachers and Students, Punakha, (2008 ~ 2011)**

Details	CPS	PS	LSS	MSS	HSS	College	Pvt.	Other Inst.	NFE Centres	Daycare Centres	Total
2008											
Number of schools and institutions	10	2	4	3	1	0	1	1	n.a	0	22
Teaching staff											
Bhutanese	61	30	67	69	31	0	0	n.a	n.a	0	258
Male	39	16	39	31	20	0	0	n.a	n.a	0	145
Female	22	14	28	38	11	0	0	n.a	n.a	0	113
Non-Bhutanese	0	0	5	10	11	0	0	n.a	n.a	0	26
Male	0	0	3	7	8	0	0	n.a	n.a	0	18
Female	0	0	2	3	3	0	0	n.a	n.a	0	8
Temporary teachers	0	0	0	0	0	0	0	n.a	n.a	0	-
Male	0	0	0	0	0	0	0	n.a	n.a	0	-
Female	0	0	0	0	0	0	0	n.a	n.a	0	-
Number of students	1244	726	1843	1826	722	0	804	70	n.a	0	7,235
Male	608	348	817	859	363	0	425	54	n.a	0	3,474
Female	636	378	1,026	967	359	0	379	16	n.a	0	3,761
Student to teacher ratio	20.39	24.20	25.60	23.11	17.19	0	n.a	n.a	n.a	0	25
2009											
Number of schools and institutions	10	2	4	3	1	1	1	1	n.a	1	
Teaching staff											
Bhutanese	60	29	73	66	31	n.a	n.a	n.a	n.a	n.a	259
Male	40	16	44	32	19	n.a	n.a	n.a	n.a	n.a	151
Female	20	13	29	34	12	n.a	n.a	n.a	n.a	n.a	108

Non-Bhutanese	0	0	5	11	11	n.a	n.a	n.a	n.a	n.a	n.a	27
Male	0	0	3	7	8	n.a	n.a	n.a	n.a	n.a	n.a	18
Female	0	0	2	4	3	n.a	n.a	n.a	n.a	n.a	n.a	9
Temporary teachers	0	0	0	0	0	n.a	n.a	n.a	n.a	n.a	n.a	0
Male	0	0	0	0	0	n.a	n.a	n.a	n.a	n.a	n.a	0
Female	0	0	0	0	0	n.a	n.a	n.a	n.a	n.a	n.a	0
Number of students	1,275	692	1,911	1,899	666	73	866	95	n.a	n.a	n.a	7,477
Male	649	330	820	876	362	55	434	61	n.a	n.a	n.a	3,587
Female	626	362	1,091	1,023	304	18	432	34	n.a	n.a	n.a	3,890
Student to teacher ratio	21.25	23.86	24.50	24.66	15.86	n.a	n.a	n.a	n.a	n.a	n.a	110.1
2010												
Number of schools and institutions	10	2	4	4	1	1	1	1	1	1	1	53
Teaching staff												
Bhutanese	77	28	83	86	32	26	28	11	28	28	2	401
Male	51	17	54	42	20	21	23	8	9	9	0	245
Female	26	11	29	44	12	5	5	3	19	19	2	156
Non-Bhutanese	0	0	10	15	10	0	13	4	0	0	0	52
Male	0	0	5	8	7	0	10	4	0	0	0	34
Female	0	0	5	7	3	0	3	0	0	0	0	18
Temporary teachers	0	0	0	0	0	0	0	0	0	0	0	0
Male	0	0	0	0	0	0	0	0	0	0	0	0
Female	0	0	0	0	0	0	0	0	0	0	0	0
Number of students	1,282	622	1,912	2,139	675	80	893	72	578	11	11	8,264
Male	649	294	884	1,007	346	62	464	46	83	6	6	3,841
Female	633	328	1,028	1,132	329	18	429	26	254	5	5	4,182
Student to teacher ratio	16.65	22.21	23.04	21.18	16.07	3	22	5.14	20.64	6	6	20.06



**Table 28. School Enrolment by Grade and Sex, Punakha, (2008~2011)**

Class	2008	2009	2010	2011
Primary level				
Total	4,093	4,165	4,259	4,369
Class PP	669.0	641.0	637.0	655
Class I	621.0	679.0	619.0	651
Class II	662	615	662	642
Class III	602	602	582	638
Class IV	580	618	630	603
Class V	507	548	603	610
Class VI	452	462	526	570
Male	1,951	1,983	2,048	2,121
Class PP	334	342	320	343
Class I	305	338	332	311
Class II	319	291	316	349
Class III	292	277	273	281
Class IV	267	298	292	297
Class V	244	232	285	275
Class VI	190	205	230	265
Female	2,142	2,182	2,211	2,248
Class PP	335	299	317	312
Class I	316	341	287	340
Class II	343	324	346	293
Class III	310	325	309	357
Class IV	313	320	338	306
Class V	263	316	318	335
Class VI	262	257	296	305



Secondary level				
Total	3,072	2,280	3,285	3,417
Class VII	598	509	519	576
Class VIII	444	540	515	507
Class IX	492	406	598	600
Class X	478	436	481	579
Class XI	541	211	477	508
Class XII	519	178	695	647
Male	1,469	1,046	1,592	1,635
Class VII	252	209	238	236
Class VIII	195	225	221	241
Class IX	220	193	273	268
Class X	230	196	241	273
Class XI	281	121	247	275
Class XII	291	102	372	342
Female	1,603	1,234	1,693	1,782
Class VII	346	300	281	340
Class VIII	249	315	294	266
Class IX	272	213	325	332
Class X	248	240	240	306
Class XI	260	90	230	233
Class XII	228	76	323	305

Source: Dzongkhag Education Sector, (Punakha)Dzongkhag

**Table 29. Student by Age-Group, Sex and by Level, Punakha, (2008~2011)**

Details	2008	2009	2010	2011
<b>Students in primary school level (Class PP-VI)</b>				
Total 4,079	4,155	4,314	4,369	
Age < 6 years	3	31	16	55
Age 6-12 years	3,324	3,392	3,571	3,549
Age 13 & above	752	732	727	765
Male 1,958	1,983	2,070	2,123	
Age < 6 years	3	14	6	32
Age 6-12 years	1,608	1,632	1,716	1,719
Age 13 & above	347	337	348	372
Female	2,121	2,172	2,250	2,246
Age < 6 years	0	17	10	23
Age 6-12 years	1,716	1,760	1,855	1,830
Age 13 & above	405	395	379	393
<b>Student in LSS level (Class VII-VIII)</b>				
Total 793	1,170	1,028	1,083	
Age < 13 years	33	27	45	39
Age 13-14 years	333	416	405	411
Age 15 & above	427	727	578	633
Male 334	475	457	477	
Age < 13 years	15	9	22	19
Age 13-14 years	131	158	173	179
Age 15 & above	188	308	262	279
Female	459	695	571	606
Age < 13 years	18	18	23	20
Age 13-14 years	202	258	232	232
Age 15 & above	239	419	316	354
<b>Students in MSS level (Class IX-X)</b>				
Total 1,232	843	1,079	1,179	
Age < 15 years	118	28	39	39
Age 15-16 years	471	285	427	457
Age 17 & above	643	530	613	683
Male 574	388	512	541	
Age < 15 years	50	13	15	16
Age 15-16 years	208	130	180	193
Age 17 & above	316	245	317	332

Female	658	455	567	638
Age < 15 years	68	15	24	23
Age 15-16 years	263	155	247	264
Age 17 & above	327	285	296	351
Students in HSS level (Class XI-XII)				
Total 1,061	389	1,172	1,155	
Age < 17 years	13	22	71	79
Age 17-18 years	290	197	539	509
Age 19 & above	758	170	562	567
Male 581	223	619	617	
Age < 17 years	5	9	35	38
Age 17-18 years	134	100	246	243
Age 19 & above	442	114	338	336
Female	480	166	553	538
Age < 17 years	8	13	36	41
Age 17-18 years	156	97	293	266
Age 19 & above	316	56	224	231

Source : Education Sector,(Punakha)Dzongkhag

**Table 30. Literacy Among Young Women, Punakha,, (2010)**

Literacy Among Young Women	2010
Percentage literate	58.6
Percentage not known	0
Number of women age 15-24 years	144

Source: BMIS, 2010

**Table 31. School Readiness, (Punakha Dzongkhag), (2010)**

Percentage of children attending first grade of primary school who attended pre-school the previous year.

School Readiness	2010
Percentage of children attending first grade who attended preschool in previous year	12.6
Number of children attending first grade of primary school	64

Source: BMIS, 2010

**Table 32. Primary School Entry, Punakha, (2010)**

Percentage of Children of Primary School Entry Age Entering Grade 1 (net intake rate)

Primary School Entry	2010
Percentage of children of primary school entry age entering grade 1	63.8
Number of children of primary school entry age	53

Source: BMIS, 2010

**Table 33. Children Reaching Last Grade of Primary School, Punakha, (2010)**

Percentage of children entering first grade of primary school who eventually reach the last grade of primary school (Survival rate to last grade of primary school)

Details	2010
Percent attending grade 1 last year who are in grade 2 this year	97.8
Percent attending grade 2 last year who are attending grade 3 this year	98.6
Percent attending grade 3 last year who are attending grade 4 this year	96.3
Percent attending grade 4 last year who are attending grade 5 this year	97.1
Percent attending grade 5 last year who are attending grade 6 this year	94.6
Percent who reach grade 6 of those who enter grade 0	83.5

Source: BMIS, 2010

**Table 34. Education Gender Parity, Punakha, (2010)**

Education gender parity Ratio of adjusted net attendance ratios of girls to boys, in primary and secondary school

Education Gender Parity	2010
Primary school adjusted net attendance ratio (NAR), girls	93.8
Primary school adjusted net attendance ratio (NAR), boys	85.9
Gender parity index (GPI) for primary school adjusted NAR	1.09
Secondary school adjusted net attendance ratio (NAR), girls	65.2
Secondary school adjusted net attendance ratio (NAR), boys	46.2
Gender parity index (GPI) for secondary school adjusted NAR	1.41

Source: BMIS, 2010

**Table 35. Summary of Crime Reports by Nature of Crime, Punakha, (2009 ~ 2011)**  
(Incident)

Nature of Crime	2009	2010	2011
Attempt, aiding and abetting, solicitation and criminal conspiracy	n.a	n.a	n.a
Homicide	n.a	n.a	n.a
Assault,battery and related offences	n.a	n.a	n.a
Kidnapping and related offences	n.a	n.a	n.a
Sexual offence	n.a	n.a	n.a
Offence against infant,child,mentally dissabled and incompetent person	n.a	n.a	n.a
Arson and related offences	n.a	n.a	n.a
Burglary, trespass and related offences	n.a	n.a	n.a
Larceny,robbery, armed robbery and related offences	n.a	n.a	n.a
Money laundering and smuggling	n.a	n.a	n.a
Embezzlement and bribery	n.a	n.a	n.a
Forgery and related offences	n.a	n.a	n.a
Defamation and related offences	n.a	n.a	n.a
Treason,terrorism and related offences	n.a	n.a	n.a
Offences against cultural and national heritage	n.a	n.a	n.a
Offences against judicial authority	n.a	n.a	n.a
Prostitution and related offences	n.a	n.a	n.a
Offences against the public welfare	n.a	n.a	n.a
Offences related to public and civic duties	n.a	n.a	n.a
Offences related to public order and tranquillity	n.a	n.a	n.a
Offences against privacy	n.a	n.a	n.a
Computer offences	n.a	n.a	n.a
Offences related to firearms and weapons	n.a	n.a	n.a
Offences related to protected species,controlled and other harmful substances	n.a	n.a	n.a
Motor vehicle offences	n.a	n.a	n.a
Others	n.a	n.a	n.a
Total crimes	n.a	n.a	n.a

Source: Royal Bhutan Police, (Punakha)Dzongkhag

**Table 36. Monthly Motor Vehicle Accidents, Punakha, (2009~ 2011)**

Month	2009	2010	2011
January	2	n.a	n.a
February	2	n.a	n.a
March	3	1	n.a
April	2	2	n.a
May	4	1	n.a
June	2	1	n.a
July	3	1	n.a
August	1	n.a	n.a
September	2	3	n.a
October	2	n.a	n.a
November	0	n.a	n.a
December	3	1	n.a
Total	26	10	n.a

Source: Royal Bhutan Police, (Punakha) Dzongkhag

**Table 37. Causes of Motor Vehicle Accidents, Punakha, (2009~2011)**

Details	2009	2010	2011
Mechanical fault	2	2	n.a
Drunk driving	0	5	n.a
Bad weather	1	0	n.a
Without licence	8	0	n.a
Unknown causes	0	0	n.a
Other causes	20	2	n.a
All causes	31	9	n.a

Source: Royal Bhutan Police, (Punakha) Dzongkhag

**Table 38. Attitudes Toward Domestic Violence, Punakha, (2010)**

Details	2010
Percentage of women age 15-49 years who believe a husband is justified in beating his wife/partner	
If goes out without telling him	46.5
If she neglects the children	57.3
If she argues with him	48.3
If she refuses sex with him	37.8
If she burns the food	25.9
For any of these reasons	62.2
Number of women age 15-49 years	506

Source: BMIS, 2010

**Table 39. Land Area and Damages Caused by Types, Punakha, (2007 ~ 2010)**

Details	2007	2008	2009	2010
Dzongkhag area (Sq. Km)	974.00	1,108.26	1,108.26	1,108.26
Total cultivated land (Acres) <sup>1</sup>	n.a	n.a	n.a	n.a
Damages caused by landslides <sup>2</sup>	n.a	n.a	n.a	n.a
Farmland (acres)	n.a	n.a	n.a	n.a
Houses (Number)	n.a	n.a	n.a	n.a
Roads (Km)	n.a	n.a	n.a	n.a
Damages caused by floods <sup>2</sup>	n.a	n.a	n.a	n.a
Farmland (acres)	n.a	n.a	n.a	n.a
Houses (Number)	n.a	n.a	n.a	n.a
Roads (Km)	n.a	n.a	n.a	n.a
Crops affected by drought (acres)	n.a	n.a	n.a	n.a
Crops damaged by wild animals (acres)	n.a	n.a	n.a	n.a
Incidence of earthquake (Number of cases reported) <sup>2</sup>	n.a	n.a	n.a	n.a
Houses damaged by earthquakes (Number)	n.a	n.a	n.a	n.a
Number of forest fires <sup>3</sup>	n.a	n.a	n.a	n.a
Acreage destroyed by forest fires	n.a	n.a	n.a	n.a
Acreage of reforestation <sup>3</sup>	n.a	n.a	n.a	n.a
Houses/structures damaged by fires (Number) <sup>3</sup>	n.a	n.a	n.a	n.a

Source: <sup>1</sup>Agriculture Sector, <sup>2</sup>Environment Sector, <sup>3</sup>Forest Sector, (Punakha) Dzongkhag

**Table 40. Average Monthly Temperature (Degree Centigrade), Punakha, (2010)**

Month/ Temperature	(Degree Celsius)		
	Maximum	Minimum	Average
January	18	5	12
February	14	1	8
March	16	6	11
April	19	9	14
May	26	14	20
June	31	21	26
July	33	22	27
August	31	22	27
September	31	21	26
October	29	18	24
November	25	14	20
December	23	6	15
Annual	25	14	19

Source: SYB, NSB

**Table 41. Average Monthly Rainfall, Punakha, (2010)**

Month/ Monthly Rainfall	(Millimeter)	
	Punakha Dzong	Shengana
January	0	0
February	2	3
March	10	13
April	30	41
May	62	76
June	143	125
July	251	372
August	98	213
September	120	256
October	37	103
November	8	19
December	4	0
Annual	764	1221

Source: SYB, NSB



**Table 42. Percentage of Forest Coverage, Number of Protected Spring and Lakes, Punakha, (2010)**

Details	2010
Forest coverage (%) <sup>2</sup>	86.3
Number of snow fall at Dzongkhag headquarter	0
Number of Protected spring water sources <sup>1</sup>	n.a
Number of Lakes <sup>1</sup>	n.a

Source:<sup>1</sup>Dzongkhag Forest Section, <sup>2</sup>Tenth Plan Documents, GNHC

**Table 43. Disposal of Childs Faeces, Punakha, (2010)**

Percent distribution of children age 0-2 years according to place of disposal of child's faeces, and the percentage of children age 0-2 years whose stools were disposed of safely the last time the child passed stools

Disposal of Childs Faeces	2010
Place of disposal of child's faeces	
Child used toilet / latrine	16.1
Put / Rinsed into toilet or latrine	32
Put / Rinsed into drain or ditch	43.4
Thrown into garbage (solid waste)	3.2
Buried	0
Left in the open	3.8
Other	1.5
Total	100
Percentage of children whose stools were disposed of safely	48.1
Number of children age 0-2 years	141

Source: BMIS 2010

**Table 44. Parliamentarians and Local Government Representatives, Punakha, (2008 & 2011)**

Details	2008	2011
Local governance (Number)		
Parliamentarians	3	3
Male	3	3
Female	0	0
Gups	11	11
Male	11	11
Female	0	0
Total gewog tshogpas <sup>1</sup>	90	37
Male	67	32
Female	13	5
Total Mangmis <sup>1</sup>	11	11
Male	11	11
Female	0	0
DYT members <sup>2</sup>	23	22
Male	23	22
Female	0	0
GYT members <sup>1</sup>	96	62
Male	83	57
Female	13	5
Polling stations <sup>2</sup>	30	55
Eligible voters (18 years and above) <sup>2</sup>	12,582	13,369
Male	6,224	6,404
Female	6,358	6,965
% of Voters turnout during election		67
Male	n.a	n.a
Female	n.a	n.a
Total election staff in Dzongkhag	3	3
Male	1	2
Female	2	1

Source:<sup>1</sup>Gewog Administration, <sup>2</sup>Election Sector, (Punakha) Dzongkhag.

**Table 45. Parliamentary Election and Local Government Election Expenditures, Punakha, (2008 & 2011)**

Details	Amount (Nu)
2008	
Parliamentarians (Number)	n.a
National council	n.a
National assembly	n.a
2011	
Local government	
Gup	128,255.08
Mangmi	64,385.68
Tsogpa	13,900.51

Source: Election Office, (Punakha) Dzongkhag

**Table 46. Government Finance Expenditures, Punakha, (2009 ~ 2011)**

Details Sectors Expenditures	2008-2009			2009-2010			2010-2011		
	Current	Capital	Total	Current	Capital	Total	Current	Capital	Total
Civil	30.738	50.622	81.360	33.207	51.355	84.562	43.065	47.548	90.613
Agriculture	6.113	0.878	6.991	7.915	10.444	18.359	7.340	11.511	18.851
Livestock	7.061	0.023	7.084	7.084	4.926	12.010	7.485	11.688	19.173
Forestry	3.561	1.710	5.271	3.915	6.940	10.855	4.929	10.413	15.342
Education	92.894	17.258	110.152	126.820	42.080	168.900	148.100	42.182	190.282
Health	17.614	0.190	17.804	23.406	3.934	27.340	26.706	8.871	35.577
Urban Development & Housing	8.556	0.749	9.305	11.111	8.638	19.749	13.258	38.535	51.793
Roads									
Bhutan post									
Telecommunication									
Power									
Trade & industry									
Total	166.537	71.430	237.967	213.458	128.317	341.775	250.883	170.748	421.631
Total plan outlay	166.689	103.740	270.429	214.125	185.393	399.5	253.814	212.847	466.661

Source: Dzongkhag Administration, (Punakha)

**Table 47. Dzongkhag 9th and 10th Five Year Plan Outlays, Punakha**

Sectors	9 FYP		10 FYP	
	Current	Capital	Current	Capital
Civil	68.743	24.865	n.a	75.897
Agriculture	28.132	42.752	n.a	92.921
Livestock	21.903	11.885	n.a	9.817
Forestry	5.195	5.588	n.a	11.670
Education	160.261	132.607	n.a	331.270
Health	56.624	22.878	n.a	85.890
Urban development & housing	7.781	60.400	n.a	119.745
Roads	7.229	2.036	n.a	n.a
Bhutan post	n.a	n.a	n.a	n.a
Telecommunication	n.a	n.a	n.a	n.a
Power	n.a	n.a	n.a	n.a
Trade & industry	n.a	n.a	n.a	n.a
Total	355.868	303.011	n.a	n.a
Total plan outlay				

Source:Dzongkhag Administration,(Punakha)

**Table 48. Dzongkhag 9th and 10th Five Year Plan Expenditure, Punakha**

( in million Nu.)

Sectors	9 FYP		10 FYP	
	Current	Capital	Current	Capital
Civil	119.5	23.2	107.010	149.525
Agriculture	22.4	1.8	21.368	22.833
Livestock	23.9	5.0	21.630	16.637
Forestry	10.5	2.9	12.405	19.063
Education	258.0	119.9	367.814	101.520
Health	40.6	0.9	67.726	12.995
Urban development & housing	27.6	22.5	32.925	47.922
Roads	n.a	n.a	n.a	n.a
Bhutan post	n.a	n.a	n.a	n.a
Telecommunication	n.a	n.a	n.a	n.a
Power	n.a	n.a	n.a	n.a
Trade & industry	n.a	n.a	n.a	n.a
Total	n.a	n.a	n.a	n.a
Total plan expenditure		737.9	630.878	370.495

Source:Dzongkhag Administration,(Punakha)

**Table 49. Gewog 9th and 10th Five Year Plan Outlays, Punakha**

( In million Nu.)

Sectors	9 FYP		10 FYP	
	Current	Capital	Current	Capital
Civil	4.275	9.367		33.327
Agriculture		37.475		85.131
Livestock		3.335		3.890
Forestry		2.558		5.020
Education		6.880		n.a
Health		12.376		19.400
Urban development & housing		2.036		4.505
Roads		n.a		n.a
Bhutan post		n.a		n.a
Telecommunication		n.a		n.a
Power		n.a		n.a
Trade & industry		n.a		n.a
Total		n.a		n.a
Total plan outlay	4.275	74.028		151.273

Source:Planning Unit, (Punakha) Dzongkhag

**Table 50. Gewog 9th and 10th Five Year Plan by Expenditures, Punakha**

( In million Nu.)

Sectors	9 FYP		10 FYP	
	Current	Capital	Current	Capital
Civil	n.a	n.a	n.a	n.a
Agriculture	n.a	n.a	n.a	n.a
Livestock	n.a	n.a	n.a	n.a
Forestry	n.a	n.a	n.a	n.a
Education	n.a	n.a	n.a	n.a
Health	n.a	n.a	n.a	n.a
Urban development & housing	n.a	n.a	n.a	n.a
Roads & bridges	n.a	n.a	n.a	n.a
Religion & cultural	n.a	n.a	n.a	n.a
Telecommunication	n.a	n.a	n.a	n.a
Power	n.a	n.a	n.a	n.a
Trade & Industry	n.a	n.a	n.a	n.a
Total	n.a	n.a	n.a	n.a
Total plan outlay	n.a	n.a	n.a	n.a

Source:Dzongkhag Administration,(Punakha)

**Table 51. Employed Persons by Age, Sex and Area of Residence, Punakha, (2008 ~ 2011)**

Details	(Number)			
	2008	2009	2010	2011
Total	n.a	n.a	14,200	13,500
Male	n.a	n.a	6,400	6,700
Female	n.a	n.a	7,800	6,800
Rural Total	n.a	n.a	13,300	12,600
Male	n.a	n.a	6,000	6,300
Female	n.a	n.a	7,300	6,300
Urban Total	n.a	n.a	900	900
Male	n.a	n.a	500	400
Female	n.a	n.a	400	500

Source : Labour Force Survey, MoLHR

**Table 52. Employment by Industries, Age Group and Sex, Punakha, (2009 ~ 2011)**

Details	2009	2010	2011
Total labour force (Number)	n.a	14,500	13,600
Total employed (%)	n.a	97.9	99.3
Male	n.a	44.1	49.3
Female	n.a	53.8	50.0
Unemployment rate	n.a	2.1	0.7
Total employed in Agriculture (%)	n.a	85.2	79.3
Male	n.a	36.6	39.0
Female	n.a	48.6	39.7
Total employed in Industries (%)	n.a	7.7	12.5
Male	n.a	4.2	5.1
Female	n.a	3.4	7.4
Total employed in Services (%)	n.a	5.5	8.1
Male	n.a	3.4	5.1
Female	n.a	2.1	2.9
Total unemployed by area (%)	n.a	n.a	n.a
Urban	n.a	n.a	n.a
Rural	n.a	n.a	n.a
Total un-employed by education (%)	n.a	n.a	n.a
Total unemployed grade XII and above	n.a	n.a	n.a
Total unemployed below grade XII	n.a	n.a	n.a
Total under employed (%)	n.a	n.a	n.a
Employed by age-group (%)	n.a	n.a	n.a
15-17 years	n.a	n.a	n.a
18-24 years	n.a	n.a	n.a
25-64 years	n.a	n.a	n.a
65 years and above	n.a	n.a	n.a
Unemployed by age-group (%)	n.a	n.a	n.a
15-17 years	n.a	n.a	n.a
18-24 years	n.a	n.a	n.a
25-64 years	n.a	n.a	n.a
65 years and above	n.a	n.a	n.a
Labor force participation rate (%)	n.a	79.7	72.7
Male participation rate	n.a	84.4	74.4
Female participation rate	n.a	78.4	71.1

Source : Labour Force Survey, MoLHR



**Table 53. Child Labour, Punakha, (2010)**

Percentage of Children by Involvement in Economic Activity and Household Chores During the Past Week, According to Age Groups, and Percentage of Children Age 5-14 Involved in Child Labour

Child labour	2010
Percentage of children age 5-11 involved in	
Economic activity	
Working outside household	
Paid work	0.5
Unpaid work	0.2
Working for family business	21.9
Economic activity for at least one hour	22.2
Household chores less than 28 hours	27.0
Household chores for 28 hours or more	0.0
Child labour	22.2
Number of children age 5-11	404.0
Percentage of children age 12-14 involved in	
Economic activity	
Working outside household	
Paid work	0.7
Unpaid work	0.0
Working for family business	36.0
Economic activity less than 14 hours	32.2
Economic activity for 14 hours or more	3.8
Household chores less than 28 hours	49.0
Household chores for 28 hours or more	0.4
Child labour	4.2
Number of children age 12-14	198.0
Total child labour [1]	16.3
Number of children age 5-14 years	602.0

Source: BMIS,2010

**Table 54. Child Labour and School Attendance, Punakha, (2010)**

Percentage of children age 5-14 years involved in child labour who are attending school, and percentage of children age 5-14 years attending school who are involved in child labour

Child Labour and School Attendance	2010
Percentage of children involved in child labour	16.3
Percentage of children attending school	82.8
Number of children age 5-14 years	602
Percentage of child labourers who are attending school	89.7
Number of children age 5-14 years involved in child labour	98
Percentage of children attending school who are involved in child labour	17.6
Number of children age 5-14 years attending school	498

Source: BMIS,2010

**Table 55. Agriculture Production and Average Prices by COMmodities, Punakha, (2007 ~ 2010)**

Details	2007	2008	2009	2010
<b>Paddy</b>				
Area (Acres)	n.a	6413.14	6,342.53	5,987.75
Production (MT)	n.a	12087.12	11,432.56	11,236.08
Price per Kg(Nu.)	n.a	n.a	n.a	n.a
<b>Maize</b>				
Area (Acres)	n.a	76.76	287.50	219.04
Production (MT)	n.a	382.19	480.24	180.53
Price per Kg(Nu.)	n.a	n.a	n.a	n.a
<b>Wheat</b>				
Area (Acres)	n.a	771.75	873.16	817.08
Production (MT)	n.a	569.39	1,295.71	551.45
Price per Kg(Nu.)	n.a	n.a	n.a	n.a
<b>Barley</b>				
Area (Acres)	n.a	45.89	50.03	4.36
Production (MT)	n.a	25.75	30.56	0.72
Price per Kg(Nu.)	n.a	n.a	n.a	n.a
<b>Buckwheat</b>				
Area (Acres)	n.a	88.04	74.42	105.45
Production (MT)	n.a	38.59	29.65	57.18
Price per Kg(Nu.)	n.a	n.a	n.a	n.a

Millet				
Area (Acres)	n.a	n.a	n.a	n.a
Production (MT)	n.a	n.a	n.a	n.a
Price per Kg(Nu.)	n.a	n.a	n.a	n.a
Fruits				
Apples				
Number of fruit bearing trees	n.a	263.00	61.00	61.00
Production (Kg)	n.a	40000.00	1,650.00	3,290.00
Price per Kg(Nu.)	n.a	n.a	n.a	n.a
Oranges/ Mandarin				
Number of fruit bearing trees	n.a	9256.00	10,736.00	10,736.00
Production (Kg)	n.a	21890.00	330,090.00	330,090.00
Price per Kg(Nu.)	n.a	n.a	n.a	n.a
Banana				
Number of fruit bearing trees	n.a	495.00	3,212.00	n.a
Production (Kg)	n.a	22500.00	87,720.00	n.a
Price per Dozen(Nu.)	n.a	n.a	n.a	n.a
Pear				
Number of fruit bearing trees	n.a	372.00	289.00	289.00
Production (Kg)	n.a	34333.30	91,920.00	91,920.00
Price per Kg(Nu.)	n.a	n.a	n.a	n.a
Plum				
Number of fruit bearing trees	n.a	75.00	n.a	n.a
Production (Kg)	n.a	40000.00	n.a	n.a
Price per Kg(Nu.)	n.a	n.a	n.a	n.a
Areca Nut				
Production (Pon)	n.a	n.a	n.a	n.a
Production (Nu.)	n.a	n.a	n.a	n.a
Price per 80 Piece/ Pon(Nu.)	n.a	n.a	n.a	n.a
Vegetables and Spices				
Potato				
Production (kg)	n.a	417100.00	454,630.00	474,620.00
Production (Nu.)	n.a	n.a	n.a	7,119,300.00
Price per Kg(Nu.)	n.a	n.a	n.a	15.00
Chili				
Production (kg)	n.a	882200.00	856,400.00	1,074,680.00
Production (Nu.)	n.a	n.a	n.a	53,734,000.00
Price per Kg(Nu.)	n.a	n.a	n.a	50.00

Onion				
Production (kg)	n.a	59900.00	n.a	n.a
Production (Nu.)	n.a	n.a	n.a	n.a
Price per Kg(Nu.)	n.a	n.a	n.a	n.a
Cabbage				
Production (kg)	n.a	35560.00	n.a	n.a
Production (Nu.)	n.a	n.a	n.a	n.a
Price per Kg(Nu.)	n.a	n.a	n.a	n.a
Cauliflower				
Production (kg)	n.a	n.a	n.a	n.a
Production (Nu.)	n.a	n.a	n.a	n.a
Price per Kg(Nu.)	n.a	n.a	n.a	n.a
Asparagus				
Production (Bundles)	n.a	n.a	n.a	n.a
Production (Nu.)	n.a	n.a	n.a	n.a
Price per bunddle (Nu.)	n.a	n.a	n.a	n.a
Tomato				
Production (Kg)	n.a	16082.00	126,340.00	98,970.00
Production (Nu.)	n.a	n.a	n.a	2,474,250.00
Price per Kg(Nu.)	n.a	n.a	n.a	25.00
Carrot				
Production (Kg)	n.a	n.a	n.a	n.a
Production (Nu.)	n.a	n.a	n.a	n.a
Price per Kg(Nu.)	n.a	n.a	n.a	n.a
Egg Plant (Brinjal)				
Production (Kg)	n.a	44980.00	22,910.00	n.a
Production (Nu.)	n.a	n.a	n.a	n.a
Price per Kg(Nu.)	n.a	n.a	n.a	n.a
Raddish				
Production (Kg)	n.a	158620.00	280,500.00	327,560.00
Production (Nu.)	n.a	n.a	n.a	3,930,720.00
Price per Kg(Nu.)	n.a	n.a	n.a	12.00
Ginger				
Production (Kg)	n.a	n.a	n.a	n.a
Production (Nu.)	n.a	n.a	n.a	n.a
Price per Kg(Nu.)	n.a	n.a	n.a	n.a
Cardamom				
Production (Kg)	n.a	n.a	n.a	n.a
Production (Nu.)	n.a	n.a	n.a	n.a
Price per Kg(Nu.)	n.a	n.a	n.a	n.a

Garlic				
Production (Kg)	n.a	n.a	n.a	n.a
Production (Nu.)	n.a	n.a	n.a	n.a
Price per Kg(Nu.)	n.a	n.a	n.a	n.a
Oil seeds and legumes				
Lentils				
Production (Kg)	n.a	n.a	n.a	n.a
Production (Nu.)	n.a	n.a	n.a	n.a
Price per Kg(Nu.)	n.a	n.a	n.a	n.a
Mustards				
Production (Kg)	n.a	138010.00	135,270.00	83,190.00
Production (Nu.)	n.a	n.a	n.a	n.a
Price per Kg(Nu.)	n.a	n.a	n.a	n.a
Beans				
Production (Kg)	n.a	386410.00	420,200.00	401,370.00
Production (Nu.)	n.a	n.a	n.a	n.a
Price per Kg(Nu.)	n.a	n.a	n.a	n.a

Source: Agriculture Sector, (Punakha) Dzongkhag

**Table 56. Agriculture Infrastructures and Other Facilities , Punakha, (2007 ~ 2010)**

Details	2007	2008	2009	2010
Irrigation for agriculture				
Number of irrigation channels	n.a	132.00	138.00	142.00
Functional	n.a		135.00	138.00
Non-Functional	n.a		3.00	4.00
Total length of channels (Km)	n.a	400.45	413.42	414.92
Area covered by irrigation (Acres)	n.a	6,773.69	8,155.93	7,969.69
Number of households benefitted	n.a	2,489.00	3,348.00	3,348.00
Number of food processing units	n.a	0.00	0.00	0.00
Number of agriculture mills <sup>1</sup>	n.a	520.00	532.00	537.00
Number of livestock product processing units	n.a	0.00	0.00	0.00
Number of farmer association/groups				
Agriculture	n.a	n.a	11.00	12.00
Livestock	n.a	n.a	5.00	
Forestry	18.00	18.00	22.00	28.00
Number of power tillers	n.a	312.00	310.00	318.00

Note:<sup>1</sup>Including two traditional mills

Source:Agriculture Sector, (Punakha) Dzongkhag

**Table 57: Livestock Population by Types, Punakha, (2007~2010)**

Details	2007	2008	2009	2010
Livestock (Number)				
Cattle	9,215	9,510	10,297	11,636
Local breed	7,739	7,515	7,206	8,034
Male	2,790	3,130	3,455	3,918
Female	4,949	4,385	3,751	4,116
Improved breed	1,476	1,995	1,844	2,086
Male	485	671	540	570
Female	991	1,324	1,304	1,516
Mithun	1,974	1,851	1,247	1,516
Bufallo	0	0	0	0
Male	0	0	0	0
Female	0	0	0	0
Horse	655	648	607	487
Local breed	n.a	n.a	595	480
Improved breed	n.a	n.a	12	3
Yak	0	0	0	0
Male	0	0	0	0
Female	0	0	0	0
Sheep	0	0	2	133
Local breed	0	0	2	133
Improved breed	0	0	0	0
Pig	1,549	1,077	1,463	737
Local breed	887	711	570	462
Improved breed	662	366	286	275
Poultry	4,364	3,854	8,756	6,484
Local breed	3,044	2,803	3,486	3,145
Improved breed	1,320	1,051	5,270	3,339
Goat	15	36	98	117

Note: Mithun includes Bamin, Jatsa & Jatsam

Source: Livestock Sector, (Punakha) Dzongkhag

**Table 58: Livestock Productions, Punakha , (2007~2010)**

Details	2007	2008	2009	2010
Livestock products				
Fresh Milk (Liters)	726,913.00	810,968.00	718,100.00	959,376.60
Butter (Kg)	32,752.00	52,078.00	35,905.00	47,968.30
Fresh Cheese (Kg)	739,619.00	190,043.00	64,629.00	86,343.89
Processed cheese (kg)	0.00	0.00	0.00	0.00
Eggs (Dozen)	289,156.00	233,183.00	13,883.25	32,791.92
Fish (Kg)	0.00	0.00	0.00	0.00
Beef (Kg)	0.00	0.00	38,078.00	15,248.00
Pork (Kg)	25,311.00	27,590.00	9,508.00	12,260.00
Yak Meat (Kg)	0.00	0.00	0.00	0.00
Mutton (Kg)	0.00	0.00	0.00	0.00
Honey (Gm)	0.00	0.00	0.00	0.00
Chicken (Kg)	0.00	0.00	0.00	0.00

Source: Livestock Sector, (Punakha) Dzongkhag

**Table 59. Forestry Production, Punakha , (2007 ~ 2010)**

Details	2007	2008	2009	2010
Wood Forest Product <sup>1</sup>				
Log Form (Cft)	n.a	9,240	27,000	n.a
Fire wood (Cubic metres)	8,336	8,024	521	10,520
Flag Poles (Number)	1,555	1,080	5,380	2,532
Shinglap (Number of trees)	n.a	236	92	59
Cham (Number of trees)	n.a	13,891	6,784	5,340
Tsim (Number of trees)	n.a	11,373	4,568	1,601
Non-Wood Forest Product <sup>2</sup>				
Mushroom (Kg)	n.a	n.a	n.a	n.a
Mushroom (Nu.)	n.a	n.a	n.a	n.a
Medicinal and Aromatic plants (Kg)	n.a	n.a	n.a	n.a
Cordyceps (Kg)	n.a	n.a	n.a	n.a
Cordyceps (Nu.)	n.a	n.a	n.a	n.a
Sand (Truck load)	926	30	72	99
Stones (Truck load)	1,207	146	595	311
Bamboo (Number)	876	505	2,037	2,000
Cane (Bundles)	n.a	n.a	n.a	n.a
Lemon grass (Kg)	n.a	n.a	n.a	n.a
Mining Sites (Number)	0	0	0	0
Quarry Sites	0	0	0	0
Municipal Waste Disposal Sites	0	1	1	1
Environmental Clearance Issued	13	14	43	37

Note:Cordyceps amount collected only for auction royalty charges.

Source:<sup>1</sup>Divisional Forest,<sup>2</sup>Thromsingla National Park,(Punakha Dzongkhag)

**Table 60. Electricity Generating Stations and Capacities, Punakha, (2009 & 2010)**

Stations	2009			2010		
	Installed capacity (no.x MW)	Generating capacity (MW)	Peak generation (MU)	Installed capacity (no.x MW)	Generating capacity (MW)	Peak generation (MU)
list the name Diesel generation stations	n.a	n.a	n.a	n.a	n.a	n.a
list the name Other diesel stations	n.a	n.a	n.a	n.a	n.a	n.a
list the name						

Source : Department of Energy, MoEA, (Punakha Dzongkhag)



**Table 61. Number of Households by Area, Punakha, (2009 ~ 2011)**

Details	2009	2010	2011
Total number of household in Urban	992	1009.255533	1026.804382
Total number of household in Rural	4152.936508	4226.257545	4299.743349

Source: Projected from PHCB 2005

**Table 62. Number of Building Permits issued by Towns, Punakha, (2009 ~ 2011)**

new buildings	2009	2010	2011
Khuruthang	3	4	3

Source: Dzongkhag Municipal, (Punakha)Dzongkhag

**Table 63. Number of Establishment by Type and Size, Punakha, (2009 ~ 2011)**

Details	2009	2010	2011
Industries by type (Number)			
Agro based	1	1	1
Forestry based	4	7	8
Mineral based	1	1	1
Others	0	1	1
Industries by scale (Number)	n.a	406	436
Large	n.a	2	3
Medium	n.a	5	6
Small	n.a	18	24
Cottage	n.a	381	403
Contract firms (Number)	293	305	321
Large	n.a	1	n.a
Medium	n.a	8	n.a
Small	n.a	37	n.a

Source: Regional Trade Office,(Thimphu)

**Table 64. Number of Wholesale, Retail Trade and Industrial Licenses Issued, Punakha, (2007 ~ 2011)**

Details	(Number)				
	2007	2008	2009	2010	2011
Trade and Industries					
Micro & retail trade licences issued	n.a	26	38	111	79
Micro & retail trade licences in operation	n.a	26	38	109	77
Wholesale trade licences issued	n.a	74	6	0	0
Wholesale trade licences in operation	n.a	4	6	0	0
Services licences issued	n.a	346	n.a	28	29
Services licences in operation	n.a	174	n.a	28	29
Manufacturing licenses issued	n.a	7	n.a	3	1
Manufacturing licenses in operation	n.a	4	n.a	3	1

Source: Regional Trade Office, (Thimphu)

**Table 65. Number of Public Transport and Facilities, Punakha, (2007 ~ 2011)**

Details	(Number)				
	2007	2008	2009	2010	2011
Public Service Transport					
Bus	n.a	n.a	5	n.a	n.a
Taxi	n.a	n.a	n.a	n.a	n.a
Motor vehicle registration					
Heavy	n.a	n.a	n.a	n.a	n.a
Medium	n.a	n.a	n.a	n.a	n.a
Small	n.a	n.a	n.a	n.a	n.a
Two wheeler	n.a	n.a	n.a	n.a	n.a
Auto Mobile workshop <sup>3</sup>	n.a	n.a	5	5	5
Bus stations	1	1	1	1	1

Source: RSTA Regional Office, (Punakha Dzongkhag)

**Table 66: Roads and Bridges, Punakha, (2007~2011)**

Details	2007	2008	2009	2010	2011
Roads (Length in Km)	196.6	289.5	353.0	364.29	425.9
Farm roads <sup>1</sup>	62	140	170	180.89	242.5
Feeder roads <sup>2</sup>	49.4	49.4	46.4	46.4	46.4
Forest roads <sup>1</sup>	59	59	59	59	59
Highways/Dzongkhag roads	27	41	78	78	78
Bridges (Number)					
Suspension bridge <sup>1</sup>	3	3	3	3	3
Suspended <sup>1</sup>	4	4	4	4	4
Bailey bridges <sup>2</sup>	6	6	6	6	6
Traditional bridges <sup>1</sup>	1	1	1	1	1

Source: <sup>1</sup>Dzongkhag Engineering Section, <sup>2</sup>Department of Roads, (Punakha Dzongkhag)

**Table 67. Telecommunications, Punakha, (2007 ~ 2011)**

	(Number)				
Telecommunications	2007	2008	2009	2010	2011
Households with fixed telephone connections	650	635	550	490	470
Tashi cell users	n.a	n.a	2,000	3,400	5,500
B.mobile users	1,000	3,500	5,000	9,000	12,000
Community information centres	0	0	0	0	3
Gewogs accessible to mobile services	3	5	8	11	11
Households with internet access	0	0	57	89	250
Bhutan post office	1	1	1	1	1

Source: Gewog Administration Office & Regional Office, (Punakha) Dzongkhag.

**Table 68. Number of Establishment in Bnking and Finance, Punakha, (2009 ~ 2011)**

	(number)		
Number of establishments	2009	2010	2011
RICBL	1	1	1
BDBL	1	1	1
BNB	0	0	1
Druk PNB	0	0	0
T Bank	0	0	0
Bhutan insurance limited	0	0	0
BOB	1	1	1

Source: Financial Institutions, (Punakha) Dzongkhag

**Table 69. Number of account holders in Banks, Punakha, (2010)**

Number of facilities	Number of account holders (2010)				
	Loan	savings	current	fixed deposit	recurring deposit
RICB	43	N.A	N.A	N.A	N.A
BDBL	612	1361	0	185	172
BNB	N.A	N.A	N.A	N.A	N.A
PNB	N.A	N.A	N.A	N.A	N.A
T Bank	N.A	N.A	N.A	N.A	N.A
Bhutan insurance limited	N.A	N.A	N.A	N.A	N.A
BOB	737	4023	180	400	741

Source: Financial Institutions,(Punakha) Dzongkhag

**Table 70. Number of Administrative Units, Punakha, (2007 ~ 2011)**

Details	2007	2008	2009	2010	2011
Administration (Number)					
Drungkhags	0	0	0	0	0
Gewogs	9	11	11	11	11
Chiwogs	66	79	79	79	55
Villages	n.a	n.a	n.a	n.a	n.a
Households	4965	5054	5145	5236	5327
Towns	1	1	1	1	1
Number of Police stations	1	1	1	1	1

**Table 71. Recreation, Tourist Visitors and Accommodation, Punakha, (2007 ~ 2011)**

Details	2007	2008	2009	2010	2011
Number of children park	-	-	-	0	0
Number of hotels	n.a	n.a	n.a	n.a	n.a
Number of restaurants	n.a	n.a	n.a	n.a	n.a
Number of drayangs	1	1	1	2	3
Number of discotheques	1	1	2	2	2
Number of tourist visitors	n.a	n.a	n.a	n.a	n.a

Source: Administration Office, (Punakha) Dzongkhag



**National Statistics Bureau**  
**ROYAL GOVERNMENT OF BHUTAN**

P.O. Box No. 338 Thimphu

Telephone No: +975-2-322753/333296/325402

Fax: +975-2-323069

[www.nsb.gov.bt](http://www.nsb.gov.bt)

ISBN-978-99936-28-11-8