



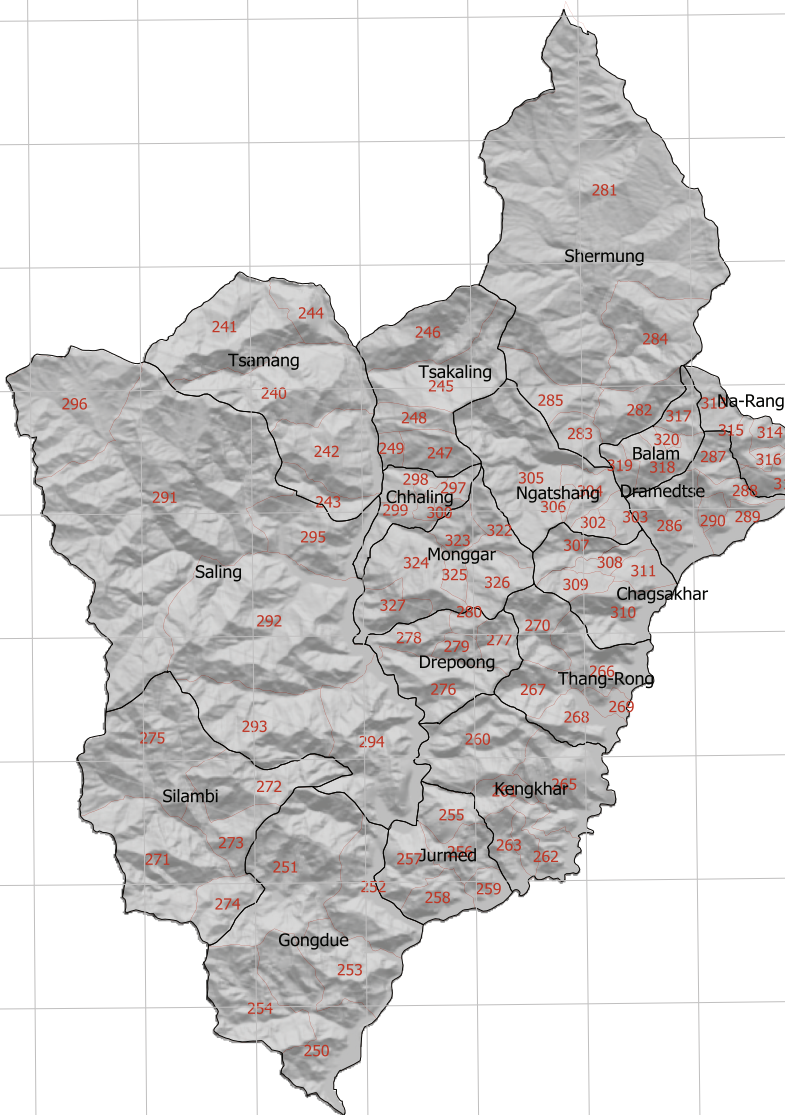
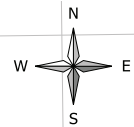
ANNUAL DZONGKHAG STATISTICS 2011



**Dzongkhag Administration
MONGGAR**



Monggar Gewogs and Chiwogs as per the final delimitation order issued by the Election Commission of Bhutan



ID-1	GEWOG	CHIWOG
240	Tsamang	BAANJAR
241	Tsamang	GANGLUKONG MAED
242	Tsamang	THUENKONG TOKARI
243	Tsamang	DRANGMALING MANGGOR
244	Tsamang	GANGKARONG TOKI
245	Tsakaling	KALING THOONLING
246	Tsakaling	TAGKHARIBI
247	Tsakaling	DROGTOTED TORMAZHONG
248	Tsakaling	NYARTSI TSAKALING
249	Tsakaling	DREINGLUNG HORONG
250	Gongdue	PIKARI YANGBARI
251	Gongdue	DAMKHAR WERINGLA
252	Gongdue	PHAZONG
253	Gongdue	DAAGSA KUMADZONG
254	Gongdue	BAGLA DEMGKALING
255	Jurmed	NGARHPHOOG SAKKAMA
256	Jurmed	BILAM DANGKILA
257	Jurmed	MOOGTANGKHAR TSAMKHAZOR
258	Jurmed	MOODZONGKHAR TSELM
259	Jurmed	KOGNAMA YA-BAGLA
260	Kengkhar	TONGLA ZI TSIBI
261	Kengkhar	KYIDPARI YULDARI
262	Kengkhar	PHOSOTHONG SHINGCHONGRI
263	Kengkhar	NEYKOLOC WANGROBRANG
264	Kengkhar	OLOKID TSALEBI
265	Kengkhar	DOGTANG MOOROONG
266	Thang-Rong	BAUKHETSHE DZIK JANKLEN
267	Thang-Rong	ATOLA
268	Thang-Rong	LINGKHAR
269	Thang-Rong	NGARU-PHONTANG
270	Thang-Rong	CHANGSHING
271	Silambi	GVALGONG
272	Silambi	DANG
273	Silambi	KADAG SILAMBI
274	Silambi	PANG NGOR
275	Silambi	WAMA
276	Drepooing	CHAGSAR TSANGKHAR
277	Drepooing	CHAGSAR
278	Drepooing	BOOMPAPZOR DREPOONG
279	Drepooing	BAMNAGRI NYAMLA
280	Drepooing	LEBTSK SHING-GAR
281	Shermung	SOENAKHAR YARAB
282	Shermung	PHUKONG SHILING
283	Shermung	GANGKORONG
284	Shermung	JABGANG THUELING
285	Shermung	HALANG SERCHONG
286	Drametse	BA-GING SHADANG
287	Drametse	SERKHAGPHOOG YENGIKHARTSHING
288	Drametse	DRAMETSE SHAHANGKA
289	Drametse	BIOHAR THOONDARI
290	Drametse	ZANGKHAR
291	Saling	SALING
292	Saling	TSENZABI MASANGDAZA
293	Saling	DROGSAR
294	Saling	KALAPANG JUSA
295	Saling	THRIDANGBI
296	Saling	SENG-GOR
297	Chhaling	SHECHI YANGTHANG
298	Chhaling	CHULABI
299	Chhaling	WANGKHAKHAR KHALANGI
300	Chhaling	PANGTHANG THEMPIANG
301	Chhaling	CHHALING DOPANG
302	Ngatshang	RELSHOB
303	Ngatshang	YADI YENHAR
304	Ngatshang	NYINGALA PHANASI
305	Ngatshang	NGATSHANG
306	Ngatshang	THOOMBARI ZANGDARI
307	Chagsakhar	YANGRAMPONGSHING
308	Chagsakhar	KHAKHANG KHESHINGRA
309	Chagsakhar	BORPHAI CHAGSAKHAR
310	Chagsakhar	YETONG JAKSHINGGOTTO
311	Chagsakhar	DOONGSINGMHA PAM
312	Na-Rang	DONGSHOOM PANGKHANG
313	Na-Rang	KHALONG
314	Na-Rang	GOMCHHU
315	Na-Rang	THRIANAPHU
316	Na-Rang	NA-RANG PANGTHANG
317	Balam	KHEBISHING
318	Balam	JADONG YANGBARI
319	Balam	DOONORAWA SELKHAR
320	Balam	BALAM MORPHU
321	Balam	BAMAPHAJ
322	Monggar	THEMNIANGSI KETONGRI
323	Monggar	KOENBAR TAGCHHU
324	Monggar	PHOSORONG
325	Monggar	KIDEXHAR
326	Monggar	WENGIKHAR YAGPROOGANG
327	Monggar	GVALPOZHING WANGLING

Gewog Boundaries
 Chiwog Boundaries



Election Commission of Bhutan
 འཕེལ་བྱེད་ལྷན་ཁག་གི་འཕེལ་བྱེད་ལྷན་ཁག་

© 2011
National Statistics Bureau

All rights reserved

Published by
National Statistics Bureau

Contact
National Statistics Bureau
PO Box No. 338
Telephone: +975-2-322753/333296
Fax: +975-2-323069
Website: www.nsb.gov.bt

Statistics Unit
Monggar Dzongkhag
Telephone: +975-03-61386
Fax: +975-03-361461
Email: tandin@nsb.gov.bt

Second Issue
Catalogue No. 104

Contents

	page
Preface	i
Background of Dzongkhag	ii
Abbreviations	iii
Section 1. Population (Tables 1-2)	1-2
Population by Age-Group and Sex	1
Population Density and Sex Ratio	2
Section 2. Births, Deaths, Marriages, and Divorces (Tables 3-10)	3-6
Total number Live Births, Deaths, Marriages, and Divorces	3
Adolescent Birth Rate and Total Fertility Rate	3
Early Childbearing	4
Use of Contraception	4
Antenatal Care Provider	5
Number of Antenatal Care Visits	5
Assistance During Delivery	6
Place of Delivery	6
Section 3. Health and Nutrition (Tables 11-26)	7-16
Health Infrastructures, Facilities and Personnel	7
Hospital Admission and Average Length of Stay	8
Number of Surgeries	8
Number of Dental Services	8
Number of Top Ten Morbidity	9
Child Disability	9
Nutritional Status of Children	10
Initial Breastfeeding	10
Duration of Breastfeeding	11
Low Birth Weight Infants	11
Neonatal Tetanus Protection	11
Solid Fuel Use	12
Use of Improved Water Sources	13
Household Water Treatment	14
Time to Source of Drinking Water	15
Types of Sanitation Facilities	16

Section 4. Education (Tables 27-34)	17-24
Number of Schools, Institutions, Teachers and Students	17
School Enrolment by Grade and Sex	20
Student by Age-Group, Sex and by Level	22
Literacy Among Young Women	23
School Readiness	23
Primary School Entry	24
Children Reaching Last Grade of Primary School	24
Education Gender Parity	24
Section 5. Law Enforcement, Courts, and Prisons (Tables 35-38)	25-27
Summary of Crime Reports by Nature of Crime	25
Monthly Motor Vehicle Accidents	26
Causes of Motor Vehicle Accidents	26
Attitudes Toward Domestic Violence	27
Section 6. Geography and Environment (Tables 39-43)	27-29
Land Area and Damages Caused by Types	27
Average Monthly Temperature	28
Average Monthly Rainfall	28
Percentage of Forest Coverage, Number of Protected Spring and Lakes	29
Disposal of Childs Faeces	29
Section 7. Elections and Local Government (Tables 44-45)	30-31
Parliamentarians and Local Government Representatives	30
Parliamentarians and Local Government election expenditures	31
Section 8. Royal Government Finances and Employment (Tables 46-50)	32-34
Government Finance Expenditures	32
Dzongkhag 9th & 10th Five Year Plan Outlays	33
Dzongkhag 9th and 10th Five Year Plan Expenditure	33
Gewog 9th and 10th Five Year Plan Outlays	34
Gewog 9th and 10th Five Year Plan by Expenditures	34
Section 9. Labor Force, Employment, and Earnings (Tables 51-54)	35-38
Employed Persons by Age, Sex and Area of Residence	35
Employment by Industries, Age-Group and Sex	36
Child Labour	37
Child Labour and School Attendance	38

Section 10. Prices (Tables 55-55)	39-41
Agricultural Production & Average prices by commodities	39
Section 11. Agriculture (Tables 56-58)	42-43
Renewable Natural Resources	42
Agricultural Production by Types	42
Livestock Population by Types	43
Livestock Productions	44
Section 12. Forestry, Fishing and Mining (Tables 59-59)	45-45
Forestry Productions	45
Section 13. Energy and Utilities (Tables 60-60)	46-46
Electricity Generating Stations And Their Capacities	46
Section 14. Construction and Housing (Tables 61-62)	46-46
Number of Households by Area	46
Number of Building Permits issued by Towns	46
Section 15. Manufactures (Tables 63-63)	47-47
Number of Establishment by Type and Size	47
Section 16. Wholesale and Retail Trade (Tables 64-64)	47-47
Number of Wholesale, Retail Trade and Industrial licenses issued	47
Section 17. Transportation (Tables 65-66)	48-48
Number of Public Transport and Facilities	48
Roads and Bridges	48
Section 18. Information and Communications (Tables 67-67)	49-49
Telecommunications	49
Section 19. Banking, Finance, and Insurance (Tables 68-69)	49-48
Number of Establishment in Banking and Finance	49
Number of account holders in Banks	50
Section 20. Arts, Recreation, Accommodation and Monuments (Tables 70-71)	50-50
Number of Administrative Units	50
Recreation, Tourist Visitors and Accommodation	50



Preface

The Annual Dzongkhag Statistics of Monggar is the second in the series of publications. It attempts to provide comprehensive statistics of Mongar Dzongkhag and will be published annually.

The report contains statistics on demographic and socio-economic, environment, culture, local governance and infrastructures of the Dzongkhag. The statistical data for this publication are collected and compiled from various sectors and through primary sources.

We hope that this report will serve as a source of information and guiding tool for micro-level planning and decision-making in the Dzongkhag. Statistics office, Monggar would like to thank and acknowledge the support and cooperation of all sector/regional heads concerned for providing timely information for this report. Without their support, this publication would not have been possible. Through this initiative, we also hope that the maintenance of sectoral information and updation in the Dzongkhag will become more systematic and efficient henceforth.

Since this report is the second publication and with information source being from numerous sectors, we expect there may be certain deficiencies in terms of coverage and updation. However, there will be continuous efforts made to improve its coverage and quality in our future publications. Your comments and suggestions in this regard will be highly appreciated.

National Statistics Bureau
Thimphu

Background

Mongar Dzongkhag is 450 km east of Thimphu, the capital city of Bhutan. It lies between 27.25° latitude and 91.2° longitude. It has an area of about 1,947 sq.km with elevation ranging from 400-4000 meters above sea level. The lower and southern parts are sub tropical while northern and higher regions have temperate climatic conditions. Summer can be hot and humid and winter cold.

The Dzongkhang is enclaved by Trashigang, Lhuntshe, Pemagatshel, Samderup Jongkhar, Zhemgang and Bum-thang Dzongkhags. The kuri chhu, Sheri chhu and Dangme chhu are important rivers in the Dzongkhang.

For Administrative prospers, the Dzongkhang is divided in to 17 gewogs and a Drungkhang located at Weringla to cover the two Gewogs of Gongdue and Slambi. The other Gewogs are Balam, Chali, Chaskar, Dramitse, Drepong, Jurmey, Kengkhar, Mongar, Narang, Ngat-shang, Saleng, Sherimung, Thangrong, Tsakaling and Tsamang.

The population is estimated at 41,386 with male and female almost equally divided.

While maize and rice are grown abundantly, citrus fruits and vegetables, dairy and poultry products are increasingly becoming important sources of cash income.

The Dzongkhang has 63.5 km of feeder roads, 309 km of farm road, and 92.2 km of power tiller tracks. The east west National High way passes through the heart of the Dzongkhang.

The dzongkhang has 51 School (50 Government and 1 private) with more than 10,000 students, 1 Regional Re-ferral Hospital, 22 Basic Health Units (BHU's) and more than 50 Outreach Clinics (ORC's). There are also 17 Renewable Natural Resources Extension Center (RNR) and one Renewable Natural Resources Research and Development Center located at Wengkhar.

Abbreviations

%:	Percent	Inst:	Institute
< :	Less than	Kg:	Kilogram
> :	Greater than	LFS:	Labor Force Survey
AIDS:	Acquired Immune Deficiency Syndrome	LSS:	Lower Secondary School
Avg:	Average	Max:	Maximum
BHU:	Basic Health Unit	Min:	Minimum
BLSS:	Bhutan Living Standard Survey	MSS:	Middle Secondary School
Cft:	Cubic Feet	n.a:	Not Available
CPS:	Community Primary school	N.A:	Not Applicable
DPTH:	Diphtheria Parthuisis Tetanus Hepatitis B	NFE:	Non Formal Education
DYT:	Dzongkhag Yargye Tsogdue	Nu:	Ngultrum
FYP:	Five Year Plan	ORC:	Outreach Clinic
GDP:	Gross Domestic Product	PAR:	Poverty Analysis Report
GIS:	(Infrastructure mapping): Geographical Infrastructure System	PHCB:	Population and Housing Census of Bhutan
Gm:	Gram	PP:	Pre Primary
GYT:	Gewog Yargye Tshogchung	PS:	Primary School
HIV:	Human Immune Virus	Pvt:	Private
Hr:	Hour	Qty:	Quantity
HSS:	Higher Secondary School	Sq.Km:	Square Kilometer
		SYB:	Statistical Year Book
		TV:	Television



Table 1. Population by Age-Group and Sex, Monggar, (2005 ~ 2011)

Age-group	2005	2006	2007	2008	2009	2010	2011
Total	37,069	37,768	38,480	39,197	39,922	40,653	41,386
0-4	3,817	4,001	4,266	4,530	4,791	5,047	5,028
5-9	4,369	3,931	3,841	3,764	3,702	3,653	3,920
10-14	4,761	4,231	4,179	4,116	4,048	3,981	3,883
15-19	4,756	4,158	4,186	4,209	4,218	4,211	4,185
20-24	3,332	3,902	3,947	3,988	4,026	4,064	4,102
25-29	2,889	3,495	3,576	3,650	3,720	3,783	3,842
30-34	2,280	2,906	3,015	3,127	3,238	3,342	3,473
35-39	1,949	2,428	2,500	2,575	2,655	2,748	2,851
40-44	1,560	1,973	2,050	2,130	2,213	2,293	2,371
45-49	1,790	1,625	1,672	1,722	1,780	1,843	1,914
50-54	1,434	1,341	1,379	1,422	1,465	1,512	1,559
55-59	1,045	1,100	1,128	1,158	1,190	1,225	1,263
60-64	999	888	909	930	954	979	1,006
65+	2,088	1,789	1,832	1,876	1,922	1,972	2,024
Male	18,694	19,008	19,334	19,660	19,995	20,331	20,670
0-4	1,896	1,925	2,054	2,182	2,309	2,433	2,424
5-9	2,246	1,902	1,855	1,815	1,783	1,758	1,887
10-14	2,471	2,064	2,034	2,000	1,964	1,929	1,878
15-19	2,371	2,058	2,062	2,066	2,064	2,055	2,037
20-24	1,767	1,993	2,002	2,007	2,012	2,018	2,026
25-29	1,410	1,816	1,854	1,887	1,917	1,941	1,959
30-34	1,158	1,528	1,581	1,635	1,688	1,738	1,783
35-39	952	1,281	1,319	1,358	1,399	1,445	1,497
40-44	742	1,027	1,070	1,115	1,162	1,206	1,248
45-49	897	837	862	888	919	953	993
50-54	709	688	707	729	751	775	800
55-59	528	561	575	590	606	624	643
60-64	495	449	459	469	481	494	507
65+	1,052	879	900	919	940	962	987

Female	18,375	18,760	19,146	19,537	19,927	20,322	20,716
0-4	1,921	2,076	2,212	2,348	2,482	2,614	2,604
5-9	2,123	2,029	1,986	1,949	1,919	1,895	2,033
10-14	2,290	2,167	2,145	2,116	2,084	2,053	2,006
15-19	2,385	2,100	2,124	2,143	2,154	2,156	2,148
20-24	1,565	1,909	1,945	1,981	2,014	2,046	2,076
25-29	1,479	1,679	1,722	1,763	1,803	1,843	1,883
30-34	1,122	1,378	1,434	1,492	1,550	1,604	1,654
35-39	997	1,147	1,181	1,217	1,256	1,302	1,354
40-44	818	946	980	1,015	1,051	1,087	1,123
45-49	893	788	810	834	861	889	921
50-54	725	653	672	693	714	737	759
55-59	517	539	553	568	584	601	620
60-64	504	439	450	461	473	486	499
65+	1,036	910	932	957	982	1,009	1,035

Note: Figures for the year 2006 onwards are based on the projected population

Source: Population & Housing Census of Bhutan, 2005

Table 2. Population, Density and Sex Ratio, Monggar, (2005 ~ 2011)

Details	2005	2006	2007	2008	2009	2010	2011
Population (Number)	37,069	37,768	38,480	39,197	39,922	40,653	41,386
Population density (Persons per Sq. Km)	19	19	20	20	21	21	21
Population sex ratio	102	101	101	101	100	100.0	99.7

Source : Dzongkhag Population Projection 2006-2015

Table 3. Total Number of Live Births, Deaths, Marriages and Divorces, Monggar, (2008 ~ 2011)

Age-group	2008	2009	2010
Live births			
Male	436	n.a	423
Female	401	n.a	406
Total deaths			
Male	96	n.a	115
Female	107	n.a	113
Infant deaths			
Male	7	n.a	12
Female	6	n.a	3
Marriages	41	42	241
Male	n.a	n.a	n.a
Female	n.a	n.a	n.a
Divorces			
Male	6	6	8
Female	30	39	67

Source: Dzongkhag Health Sector & Court, Monggar, Dzongkhag

Table 4. Adolescent Birth rate and Total fertility rate, Monggar, (2010)

Details	2010
Adolescent birth rate (age specific fertility rate for women age 15-19)	138
Total fertility rate	3

Source : BMIS, 2010

Table 5. Early Childbearing, Monggar, (2010)

Percentage of women age 15-19 who have had livebirth or who are pregnant with the first child; percentage of women age 15-19 who have begun childbearing before age 15, and the percentage of women age 20~24 who have had a live birth before age 18.

Details	2010
% of women age 15~19	
Have had a live birth	19
Are pregnant with first child	1
Have begun childbearing	19.9
Have had a live birth before 15	0
Number of women age 15~19	117
% of women age 20~24 who have had a live birth before age 18	16.6
Number of women age 20~24	161

Source : BMIS, 2010

Table 6. Use of Contraception, Monggar, (2010)

Percentage of Women age 15~49 Years Currently Married or in Union Who are using (or whose partner is using) a Contraceptive Method.

Details	2010
Not using any method	36.4
Percent of women (currently married or in union) who are using	
Female sterilization	5
Male sterilization	8
IUD	6.2
Injectables	38.4
Implants	0
Oral contraceptive Pill	3.5
Male condom	2.5
Female condom	0
Foam/ jelly	0
Lactational amenorrhoea method (LAM)	0
Periodic abstinence/ rhythm	0
Withdrawal	0
Other	0
Any modern method	63.6
Any traditional method	0
Any method	63.6
Number of women currently married or in union	697

Source : BMIS, 2010

Table 7. Antenatal Care Provider, Monggar, (2010)

Percent Distribution of Women Aged 15~49 Who Gave Birth in The Survey by Type of Personnel Providing Antenatal Care.

Details	2010
Persons providing antenatal care	20.6
Doctor	30.8
Nurse/ midwife	47.9
HA/ BHW	0
Assistant clinical officer (ACO)	0
Traditional birth attendant	0
Village health worker	0
Other/ missing	0
No antenatal care received	0.7
Total	100
At Least once by skilled personnel	99.3
Number of women who gave birth in the preceding 2 years	186

Source : BMIS, 2010

Table 8. Number of Antenatal Care Visits, Monggar, (2010)

Percentage of Women Who had a Live Births During the Two Years Preceding the Survey by Number of Antenatal Care Visits by Any Provider.

Details	2010
Percent of women who had	
No antenatal care visits	0.7
1 Visits	3
2 Visits	8.4
3 Visits	9.1
4 or more visits	78.1
Missing/ DK	0.7
Total	100
Number of women who gave birth in the preceding 2 years	186

Source : BMIS, 2010

Table 9. Assistance During Delivery, Monggar, (2010)

Percent Distribution of Women age 15-49 Who had a Live Birth in the Two Years Preceding the Survey by Person Assisting, at Delivery and Percentage of Births Delivered by C-section.

Details	2010
Person assisting at delivery	
Doctor	21.2
Nurse / Midwife	20.2
HA/BHW	20.3
Asst. clinical officer (ACO)	0
Traditional birth attendant	0
Village health worker	0.7
Relative / friend	35.1
Other/missing	1.7
No attendant	0.8
Total	100
Any skilled personnel	61.7
Percent delivered by C-section	8.1
Number of women who gave birth in preceding two years	186

Source : BMIS, 2010

Table 10. Place of Delivery, Monggar, (2010)

Percent Distribution of Women age 15-49 With a Birth in Two Years Preceding the Survey by Place of Delivery.

Details	2010
Place of delivery	
Public sector health facility	59.8
Private sector health facility	0
Home	40.2
Other	0
Total	100
Delivered in health facility [1]	59.8
Number of women who gave birth in preceding two years	186

Source : BMIS, 2010

Table 11. Health Infrastructures, Facilities and Personnel, Monggar, (2007 ~ 2010)

Details	2007	2008	2009	2010
Number of hospitals	1	1	1	1
Number of BHUs	20	20	24	24
BHU grade I	1	2	1	1
BHU grade II	18	18	23	23
Number of ORCs	54	51	51	51
Number of indigenous units	2	4	4	4
Number of doctors	13	11	14	13
Number of hospital/BHU beds	80	214	214	214
Persons per doctor	3266.1	3563.4	2851.6	2851.6
Persons per hospital bed	481	183.2	186.6	185
Total morbidity attendance	137826	133376	135286	136,782
Health assistants	27	27	32	32
Basic health workers	17	17	17	17
Sister and nurses	56	57	57	57
Technicians	56	47	47	47
Indigenous dungtsho	1	1	1	2
Indigenous compounders/Menpas	2	4	4	4
Malaria workers	2	2	3	3
Village health workers	63	75	93	93
Number of children immunized				
Polio	790	847	845	796
DPTH	786	847	848	781
Measles	878	856	877	806
BCG	855	979	1039	977
Others	1693	1888	1133	898

Source: Dzongkhag Health Sector, Monggar, Dzongkhag

Table 12. Hospital Admission and Average Length of Stay, (Dzongkhag Name), (2007 ~ 2010)

Average admission	2007	2008	2009	2010
Hospital admission				
Total	2790	2834	3392	3758
Patient days	19005	18417	23253	23518
Average days	6.8	6.5	6.9	6.3
BHU admission	779	842	913	789

Source : Annual Health Bulletin, MoH

Table 13. Number of Surgeries, Monggar, (2007 ~ 2010)

Details	2007	2008	2009	2010
Surgeries				
Caesarian Section	119	157	183	176
General Abdominal	93	102	145	123
General Others	204	176	211	225
Orthopaedic extremities	161	78	341	290
Orthopaedic Others	80	37	10	231
Gynaecology	167	218	270	15
ENT	5	8	45	81
Eye	99	53	91	145

Source : Annual Health Bulletin, MoH

Table 14. Number of Dental Services, Monggar, (2007 ~ 2010)

Dental Services	2007	2008	2009	2010
Prophylaxis	53	51	169	103
Scaling	34	38	38	106
Fillings	755	879	1134	1215
Extractions	1505	1389	1579	1704
Others	2218	2331	2109	2517

Source : Annual Health Bulletin, MoH

Table 15: Number of Top Ten Morbidity, Monggar, (2007~ 2010)

Priority health problem/ Disease	2007	2008	2009	2010
Diarrhoea	4,443	3,230	n.a	2,681
Conjunctivitis	4,352	3,723	n.a	6,707
Dysentery	1,880	1,697	n.a	1,399
Typhoid	368	159	n.a	n.a
Sexually transmitted disease, excluding HIV/AIDS	115	114	n.a	43
Diabetes	18	39	n.a	46
Tuberculosis	71	75	n.a	98
Early syphilis	2	11	n.a	n.a
Cholera	0	0	n.a	0
Tetanus	0	0	n.a	0
Diphtheria	0	0	n.a	0
Pertussis	0	0	n.a	0

Source : Dzongkhag Health Sector, Monggar, Dzongkhag

Table 16. Child Disability, Monggar, (2010)

Child Disability	2010
Percentage of children aged 2-9 years with reported disability by type of disability	
Delay in sitting standing or walking	2.3
Difficulty seeing, either in the daytime or at night	1.2
Appears to have difficulty hearing	2.1
No understanding of instructions	2.6
Difficulty in walking moving, moving arms, weakness or stiffness	1.6
Have fits, become rigid, lose consciousness	0.7
Not learning to do things like other children his/her age	6.2
No speaking cannot be understood in words	7
Appears mentally backward, dull, or slow	1.7
Speech is not normal	4.2
Number of children aged 3-9 years	714
Cannot name at least one object	17.5
Number of children aged 2 years	100
Percentage of children 2-9 years of age with at least one reported disability*	20.3
Number of children aged 2-9 years	814

Source: BMIS, 2010

Table 17. Nutritional Status of Children, Monggar, (2010)

Percentage of children under age 5 by nutritional status according to three anthropometric indices: weight for age, height for age, and weight for height.

Nutritional Status		2010
Weight for age:	% below -2 sd [1]	12
Weight for age:	% below -3 sd [2]	3.7
Weight for age:	Mean Z-Score (SD)	-0.8
Weight for age:	Number of children	462
Height for age:	% below -2 sd [3]	39.7
Height for age:	% below -3 sd [4]	13.9
Height for age:	Mean Z-Score (SD)	-1.5
Height for age:	Number of children	453
Weight for height:	% below -2 sd [5]	5.5
Weight for height:	% below -3 sd [6]	2
Weight for height:	% above +2 sd	5.6
Weight for height:	Mean Z-Score (SD)	0.1
Weight for height:	Number of children	449

Source: BMIS, 2010

Table 18. Initial Breastfeeding, Monggar, (2010)

Percentage of Last-Born Children in the 2 Years Preceding the Survey Who Were Ever Breastfed, Percentage Who Were Breastfed Within One Hour of Birth and Within One Day of Birth, and Percentage Who Received a Prelacteal Feed.

Initial Breastfeeding	2010
Percentage ever breastfed	
Percentage who were first breastfed: Within one hour of birth	65.9
Percentage who were first breastfed: Within one day of birth	93.4
Percentage who received a prelacteal feed	4.3
Number of last-born children in the two years preceding the survey	186

Source: BMIS, 2010

Table 19. Duration of Breastfeeding, Monggar, (2010)

Median duration of any breastfeeding, exclusive breastfeeding, and predominant breastfeeding among children age 0-35 months.

Duration of Breastfeeding	2010
Median duration (in months) of	
Any breastfeeding	25.8
Exclusive breastfeeding	2.2
Predominant breastfeeding	3
Number of children age 0-35 months	274

Source: BMIS, 2010

Table 20. Low Birth Weight Infants, Monggar, (2010)

Percentage of Last-Born Children in the 2 Years Preceding the Survey That are Estimated to Have Weighed Below 2500 Grams at Birth and Percentage of Live Births Weighed at Birth.

Low Birth Weight Infants	2010
Percent of live births	
Below 2500 grams	11
Weighed at birth	70
Number of live births in the last 2 years	186

Source: BMIS, 2010

Table 21. Neonatal Tetanus Protection, Monggar, (2010)

Percentage of women age 15-49 years with a live birth in the last 2 years protected against neonatal tetanus.

Neonatal Tetanus Protection	2010
Percentage of Women Who Received at Least 2 Doses	
During Last Pregnancy	49
Percentage of women who did not receive two or more	
doses during last pregnancy but received	
2 doses, the last within prior 3 years	27
3 doses, the last within prior 5 years	0.7
4 doses, the last within prior 10 years	0.3
5 or more doses during lifetime	0
Protected against tetanus [1]	77
Number of women with a live birth in the last 2 years	186

Source: BMIS, 2010

Table 22. Solid Fuel Use, Monggar, (2010)

Percentage Distribution of Household Members According to Type of Cooking Fuel Used by the Household, and Percentage of Household Members Living in Households Using Solid Fuels for Cooking.

Solid Fuel Use	2010
Percentage of household members in households using	
Electricity	28.7
Liquefied Petroleum Gas (LPG)	14.4
Kerosene	0.1
Coal	0.6
Wood	56.3
Straw/Shrubs/Grass	0
No food cooked in household	0
Other	0
Total	100
Solid fuels for cooking	56.8
Number of household members	4741

Source: BMIS, 2010

Table 23. Use of Improved Water Sources, Monggar, (2010)

Percent distribution of household population according to main source of drinking water and percentage of household population using improved drinking water sources.

Water Sources	2010
Main source of drinking water	
Improved sources	
Piped into dwelling	18
Piped into compound	74.7
Piped to neighbor	2.4
Public outdoor tap	1.3
Protected well	0
Spring	2.4
Rainwater collection	0.3
Bottled water	0
Unimproved sources	
Unprotected well	0.1
Unprotected spring	0.8
Tanker-truck	0
Cart with samll tank/drum	0
Surface water (river,stream, dam, lake,pond,canal,irrigation channel)	0.1
Other	0
Total	100
Percentage using improved sources of drinking water	99
Number of household members	4741

Source: BMIS, 2010

Table 24. Household Water Treatment, Monggar, (2010)

Percentage of Household Population by Drinking Water Treatment Method Used in the Household, and for Household Members Living in Households Where an Unimproved Drinking Water Source is Used, the Percentage Who are Using an Appropriate Treatment Method

Water Treatment	2010
Water treatment method used in the household	
None	33.2
Boil	63.6
Add bleach / chlorine	0.4
Strain through a cloth	1
Use water filter	15.6
Solar disinfection	0
Let it stand and settle	3.2
Other	0
Don't know	0
Number of household members	4741
Percentage of household members in households using unimproved drinking water sources and using an appropriate water treatment method [1]	22.9
Number of household members in households using unimproved drinking water sources	46

Source: BMIS, 2010

Table 25. Time to Source of Drinking Water, Monggar, (2010)

Percent Distribution of Household Population According to Time to go to Source of Drinking Water, Get Water and Return, for Users of Improved and Unimproved Drinking Water Sources

Time to Source of Drinking Water	2010
Time to source of drinking water	
Users of improved drinking water sources	
Water on premises	95.4
Less than 30 minutes	1.7
30 minutes or more	1.9
Missing/DK	0
Users of unimproved drinking water sources	
Water on premises	0.5
Less than 30 minutes	0.1
30 minutes or more	0.4
Missing/DK	0
Total	100
Number of household members	4741

Source: BMIS, 2010

Table 26. Types of Sanitation Facilities, Monggar, (2010)

Percent Distribution of Household Population According to Type of Toilet Facility Used by the Household

Type of Sanitation Facilities	2010
Type of toilet facility used by household	
Improved sanitation facility	
Flush toilet	9.2
Flush to septic tank(Without soak pit)	10.4
Flush to pit (latrine)	1.2
Flush to unknown place/not sure/DK where	0
Flush to septic tank (with soak pit)	5.6
Ventilated Improved Pit latrine (VIP)	0
Pit latrine with slab	14.2
Composing toilet	0
Unimproved sanitation facility	
Flush to somewhere else	0
Pit latrine without slab /open pit	56.7
Long drop latrine	0
Bucket	0
Other	0
Missing	0.1
Open defecation (no facility, bush, field)	
No facility,bush, field	2.5
Total	100
Number of household members	4741

Source: BMIS, 2010

Table 27. Number of Schools, Institutions, Teachers and Students, Monggar, (2008 ~ 2011)

Details	CPS	PS	LSS	MSS	HSS	College	Pvt.	Other	NFE	Daycare	Total
								Inst.	Centres	Centres	
2008											
Number of schools and institutions	31	6	8	2	2	n.a	n.a	n.a	65	n.a	114
Teaching staff											
Bhutanese											
Male	59	21	48	27	41	n.a	n.a	n.a	29	n.a	225
Female	27	4	40	15	9	n.a	n.a	n.a	36	n.a	131
Non-Bhutanese											
Male	0	0	1	4	12	n.a	n.a	n.a	n.a	n.a	17
Female	0	0	2	0	5	n.a	n.a	n.a	n.a	n.a	7
Temporary teachers											
Male	1	0	0	0	0	n.a	n.a	n.a	n.a	n.a	1
Female	0	0	0	0	0	n.a	n.a	n.a	n.a	n.a	
Number of students											
Male	1,405	472	1,477	647	828	n.a	n.a	n.a	248	n.a	5,077
Female	1,333	451	1,457	573	564	n.a	n.a	n.a	780	n.a	5,158
Student to teacher ratio	31	37	32	27	21	n.a	n.a	n.a	16	n.a	27
2009											
Number of schools and institutions	31	6	8	2	2	n.a	1	n.a	66	n.a	116
Teaching staff											
Bhutanese											
Male	78	26	58	30	37	n.a	3	n.a	30	n.a	262
Female	30	8	49	20	20	n.a	1	n.a	42	n.a	170

2011	32	6	8	2	2	2	n.a	1	n.a	166	n.a	217
Number of schools and institutions												
Teaching staff												
Bhutanese												
Male	117	27	82	30	49	107	n.a	10	n.a	107	n.a	422
Female	30	11	57	22	19	59	n.a	4	n.a	59	n.a	202
Non-Bhutanese												
Male	0	0	2	4	6	n.a	n.a	4	n.a	n.a	n.a	16
Female	0	0	1	0	2	n.a	n.a	0	n.a	n.a	n.a	3
Temporary teachers												
Male	0	0	0	0	0	n.a	n.a		n.a	n.a	n.a	n.a
Female	0	0	0	0	0	n.a	n.a		n.a	n.a	n.a	n.a
Number of students												
Male	1541	455	1656	660	802	675	n.a	127	n.a	675	n.a	5,916
Female	1496	441	1634	577	675	1458	n.a	147	n.a	1458	n.a	6,428
Student to teacher ratio	20	23.57	23.67	23.79		12.85	n.a	19.57	n.a	12.85	n.a	20

Source: Dzongkhag Education Sector, Monggar, Dzongkhag.

Table 28. School Enrolment by Grade and Sex, (Dzongkhag Name), (2008~2011)

Class	2008	2009	2010	2011
Primary level				
Total	6397	6449	6509	6,798
Class PP	1065	1012	1053	1,009
Class I	995	1009	1009	1,066
Class II	1059	959	938	1,006
Class III	906	1032	925	957
Class IV	835	920	1039	960
Class V	817	740	842	960
Class VI	720	777	703	840
Male				
Total	3280	3274	3261	3,406
Class PP	543	497	532	517
Class I	541	514	495	515
Class II	548	514	490	487
Class III	460	538	485	502
Class IV	406	453	516	502
Class V	427	365	405	482
Class VI	355	393	338	401
Female				
Total	3117	3175	3248	3,392
Class PP	522	515	521	492
Class I	454	495	514	551
Class II	511	445	448	519
Class III	446	494	440	455
Class IV	429	467	523	458
Class V	390	375	437	478
Class VI	365	384	365	439
Secondary level				
Total	2810	3073	3356	3,413
Class VII	702	684	740	729
Class VIII	687	667	607	710
Class IX	536	749	659	618
Class X	458	505	550	587
Class XI	232	239	425	349
Class XII	195	229	375	420

Male	1549	1688	1789	1,762
Class VII	386	348	358	359
Class VIII	335	365	311	339
Class IX	281	372	347	311
Class X	261	290	279	325
Class XI	146	166	249	185
Class XII	140	147	245	243
Female	1261	1385	1567	1,651
Class VII	316	336	382	370
Class VIII	352	302	296	371
Class IX	255	377	312	307
Class X	197	215	271	262
Class XI	86	73	176	164
Class XII	55	82	130	177

Source: Dzongkhag Education Sector, Monggar, Dzongkhag

Table 29. Student by Age-Group, Sex and by Level, Monggar, (2008~2011)

Details	2008	2009	2010	2011
Students in primary school level (Class PP-VI)				
Total	6398	6449	6479	6,795
Age < 6 years	3	18	72	145
Age 6-12 years	5337	5251	5346	5,435
Age 13 & above	1058	1180	1061	1,215
Male	3280	3267	3312	3,417
Age < 6 years	3	9	33	70
Age 6-12 years	2735	2656	2727	2,747
Age 13 & above	542	602	552	600
Female	3118	3182	3167	3,378
Age < 6 years	0	9	39	75
Age 6-12 years	2602	2595	2619	2,688
Age 13 & above	516	578	509	615
Student in LSS level (Class VII-VIII)				
Total	1389	1351	1396	1,442
Age < 13 years	22	44	50	49
Age 13-14 years	464	559	597	569
Age 15 & above	903	748	749	824
Male	721	713	690	701
Age < 13 years	15	20	26	23
Age 13-14 years	222	291	305	266
Age 15 & above	484	402	359	412
Female	668	638	706	741
Age < 13 years	7	24	24	26
Age 13-14 years	242	268	292	303
Age 15 & above	419	346	390	412
Students in MSS level (Class IX-X)				
Total	994	1143	1181	1,205
Age < 15 years	72	15	20	27
Age 15-16 years	344	259	324	433
Age 17 & above	578	869	837	745
Male	542	598	643	636
Age < 15 years	24	7	9	15
Age 15-16 years	191	121	161	207
Age 17 & above	327	470	473	414

Female	452	545	538	569
Age < 15 years	48	8	11	12
Age 15-16 years	153	138	163	226
Age 17 & above	251	399	364	331
Students in HSS level (Class XI-XII)				
Total	427	579	809	769
Age < 17 years	42	79	6	15
Age 17-18 years	171	152	188	238
Age 19 & above	214	348	615	516
Male	286	377	494	428
Age < 17 years	17	34	4	6
Age 17-18 years	107	92	93	124
Age 19 & above	162	251	397	298
Female	141	202	315	341
Age < 17 years	25	45	2	9
Age 17-18 years	64	60	95	114
Age 19 & above	52	97	218	218

Source : Education Sector, Monggar, Dzongkhag

Table 30. Literacy Among Young Women, Monggar, (2010)

Literacy Among Young Women	2010
Percentage literate	45.8
Percentage not known	1.2
Number of women age 15-24 years	278

Source: BMIS, 2010

Table 31. School Readiness, Monggar, (2010)

Percentage of children attending first grade of primary school who attended pre-school the previous year.

School Readiness	2010
Percentage of children attending first grade who attended preschool in previous year	0
Number of children attending first grade of primary school	105

Source: BMIS, 2010

Table 32. Primary School Entry, Monggar, (2010)

Percentage of Children of Primary School Entry Age Entering Grade 1 (net intake rate)

Primary School Entry	2010
Percentage of children of primary school entry age entering grade 1	70.4
Number of children of primary school entry age	97

Source: BMIS, 2010

Table 33. Children Reaching Last Grade of Primary School, Monggar, (2010)

Percentage of children entering first grade of primary school who eventually reach the last grade of primary school (Survival rate to last grade of primary school)

Details	2010
Percent attending grade 1 last year who are in grade 2 this year	99.2
Percent attending grade 2 last year who are attending grade 3 this year	98.7
Percent attending grade 3 last year who are attending grade 4 this year	97.2
Percent attending grade 4 last year who are attending grade 5 this year	98.8
Percent attending grade 5 last year who are attending grade 6 this year	100
Percent who reach grade 6 of those who enter grade 0	92.9

Source: BMIS, 2010

Table 34. Education Gender Parity, Monggar, (2010)

Education gender parity Ratio of adjusted net attendance ratios of girls to boys, in primary and secondary school

Education Gender Parity	2010
Primary school adjusted net attendance ratio (NAR), girls	90.3
Primary school adjusted net attendance ratio (NAR), boys	84.6
Gender parity index (GPI) for primary school adjusted NAR	1.07
Secondary school adjusted net attendance ratio (NAR), girls	52
Secondary school adjusted net attendance ratio (NAR), boys	46.5
Gender parity index (GPI) for secondary school adjusted NAR	1.12

Source: BMIS, 2010

Table 35. Summary of Crime Reports by Nature of Crime, Monggar, (2009 ~ 2011)

Nature of Crime	(Incident)		
	2009	2010	2011
Attempt, aiding and abetting, solicitation and criminal conspiracy	n.a	n.a	n.a
Homicide	n.a	1	3
Assault, battery and related offences	13	29	23
Kidnapping and related offences	n.a	n.a	n.a
Sexual offence	1	5	4
Offence against infant, child, mentally disabled and incompetent person	1	1	n.a
Arson and related offences	n.a	n.a	n.a
Burglary, trespass and related offences	5	6	1
Larceny, robbery, armed robbery and related offences	6	8	7
Money laundering and smuggling	1	1	n.a
Embezzlement and bribery	n.a	n.a	n.a
Forgery and related offences	n.a	n.a	1
Defamation and related offences	n.a	n.a	n.a
Treason, terrorism and related offences	n.a	n.a	n.a
Offences against cultural and national heritage	14	13	5
Offences against judicial authority	n.a	n.a	n.a
Prostitution and related offences	n.a	n.a	n.a
Offences against the public welfare	2	1	n.a
Offences related to public and civic duties	n.a	1	n.a
Offences related to public order and tranquillity	1	n.a	1
Offences against privacy	n.a	n.a	n.a
Computer offences	n.a	n.a	n.a
Offences related to firearms and weapons	n.a	n.a	n.a
Offences related to protected species, controlled and other harmful substances	3	3	1
Motor vehicle offences	141	118	105
Others	9	17	10
Total crimes	197	204	161

Source: Royal Bhutan Police, Monggar, Dzongkhag

Table 36. Monthly Motor Vehicle Accidents, Monggar, (2009~ 2011)

Month	2009	2010	2011
January	4	3	3
February	1	5	2
March	3	2	1
April	2	1	2
May	3	5	4
June	1	4	3
July	2	3	4
August	3	1	1
September	3	2	4
October	5	2	3
November	1	2	n.a
December	2	1	n.a
Total	30	31	27

Source: Royal Bhutan Police, Monggar, Dzongkhag

Note: Motor Vehicle Accidents data as of Oct. 2011.

Table 37. Causes of Motor Vehicle Accidents, Monggar, (2009~2011)

Details	2009	2010	2011
Mechanical fault	n.a	n.a	n.a
Drunk driving	n.a	n.a	n.a
Bad weather	n.a	n.a	n.a
Without licence	n.a	n.a	n.a
Unknown causes	n.a	n.a	n.a
Other causes	n.a	n.a	n.a
All causes	n.a	n.a	n.a

Source: Royal Bhutan Police, Monggar, Dzongkhag

Table 38. Attitudes Toward Domestic Violence, Monggar, (2010)

Details	2010
Percentage of women age 15-49 years who believe a husband is justified in beating his wife/partner	
If goes out without telling him	40.9
If she neglects the children	57.9
If she argues with him	59.5
If she refuses sex with him	35.1
If she burns the food	38.1
For any of these reasons	74.2
Number of women age 15-49 years	926

Source: BMIS, 2010

Table 39. Land Area and Damages Caused by Types, Monggar, (2007 ~ 2010)

Details	2007	2008	2009	2010
Dzongkhag area (Sq. Km)	1,947	1,947	1,947	1,947
Total cultivated land (Acres) ¹				
Damages caused by landslides ²				
Farmland (acres)	n.a	n.a	n.a	n.a
Houses (Number)	n.a	n.a	n.a	n.a
Roads (Km)	n.a	n.a	n.a	n.a
Damages caused by floods ²				
Farmland (acres)	n.a	n.a	n.a	n.a
Houses (Number)	n.a	n.a	n.a	n.a
Roads (Km)	n.a	n.a	n.a	n.a
Crops affected by drought (acres)	n.a	n.a	n.a	n.a
Crops damaged by wild animals (acres)	n.a	n.a	n.a	n.a
Incidence of earthquake ² (Number of cases reported)	n.a	n.a	2	1
Houses damaged by earthquakes (Number) ³	n.a	n.a	3,383	479
Number of forest fires	10	4	11	5
Acreage destroyed by forest fires	3,150	3,401	1,231	1,635
Acreage of reforestation	8	n.a	177	65.19
Houses/structures damaged by fires (Number) ³	n.a	n.a	n.a	n.a

Source: 1 Agriculture Sector, 2 Environment Sector, 3 Forest Sector, Monggar, Dzongkhag

Table 40. Average Monthly Temperature (Degree Centigrade), Monggar, (2010)

Month/ Temperature	(Degree Celsius)		
	Maximum	Minimum	Average
January	18	7	12
February	18	6	12
March	21	11	16
April	24	13	18
May	22	10	16
June	25	15	20
July	24	16	20
August	25	16	21
September	24	15	19
October	22	12	17
November	20	10	15
December	18	5	11
Annual	22	11	16

Source: SYB, NSB

Table 41. Average Monthly Rainfall, Monggar, (2010)

Month/ Monthly Rainfall	(Millimeter)		
	Monggar	Lingmethnag	Yadi
January	0	0	0
February	3	2	0
March	61	49	51
April	59	69	97
May	133	147	128
June	224	214	209
July	268	195	198
August	81	93	229
September	100	78	152
October	52	126	42
November	4	5	16
December	1	0	0
Annual	987	977	1121

Source: SYB, NSB

Table 42. Percentage of Forest Coverage, Number of Protected Spring and Lakes, Monggar, (2010)

Details	2010
Forest coverage (%) ²	87.5
Number of snow fall at Dzongkhag headquater	n.a
Number of Protected spring water sources ¹	n.a
Number of Lakes ¹	n.a

Source: 1Dzongkhag Forest Section, 2Tenth Plan Documents, GNHC

Table 43. Disposal of Childs Faeces, Monggar, (2010)

Percent distribution of children age 0-2 years according to place of disposal of child's faeces, and the percentage of children age 0-2 years whose stools were disposed of safely the last time the child passed stools

Disposal of Childs Faeces	2010
Place of disposal of child's faeces	
Child used toilet / latrine	9.1
Put / Rinsed into toilet or latrine	35.1
Put / Rinsed into drain or ditch	39.2
Thrown into garbage (solid waste)	0.4
Buried	2.1
Left in the open	12.6
Other	1.6
Total	100
Percentage of children whose stools were disposed of safely	44.2
Number of children age 0-2 years	274

Source: BMIS 2010

Table 44. Parliamentarians and Local Government Representatives, Monggar, (2008 & 2011)

Details	2008	2011
Local governance (Number)		
Parliamentarians		
Male	4	4
Female	1	1
Gups		
Male	17	16
Female	0	0
Total gewog tshogpas ¹		
Male	84	36
Female	2	5
Total Mangmis ¹		
Male	17	15
Female	0	2
DYT members ²		
Male	35	31
Female	0	2
GYT members ¹		
Male	84	67
Female	2	7
Polling stations ²	77	89
Eligible voters (18 years and above) ²		
Male	12423	13840
Female	13466	14953
% of Voters turnout during election		
Male	26	19
Female	27	25
Total election staff in Dzongkhag		
Male	2	3
Female	1	1

Source: 1Gewog Administration, 2Election Sector, Monggar, Dzongkhag.

Note: As of October, 2011

Table 45. Parliamentarians and Local Government Election Expenditures, Monggar, (2008 & 2011)

Details	Amount (Nu)
2008	
Parliamentarians (Number)	n.a
National council	n.a
National assembly	n.a
2011	
Local government	8,850,000.0
Gup	n.a
Mangmi	n.a
Tsogpa	n.a

Source: Election Office, Monggar, Dzongkhag

Table 46. Government Finance Expenditures, Monggar, (2009 ~ 2011)

Details Sectors	2009		2010		2011	
	Current	Capital	Current	Capital	Current	Capital
Civil	n.a	n.a	n.a	n.a	n.a	n.a
Agriculture	n.a	n.a	n.a	n.a	n.a	n.a
Livestock	n.a	n.a	n.a	n.a	n.a	n.a
Forestry	n.a	n.a	n.a	n.a	n.a	n.a
Education	n.a	n.a	n.a	n.a	n.a	n.a
Health	n.a	n.a	n.a	n.a	n.a	n.a
Urban Development & Housing	n.a	n.a	n.a	n.a	n.a	n.a
Roads	n.a	n.a	n.a	n.a	n.a	n.a
Bhutan post	n.a	n.a	n.a	n.a	n.a	n.a
Telecommunication	n.a	n.a	n.a	n.a	n.a	n.a
Power	n.a	n.a	n.a	n.a	n.a	n.a
Trade & industry	n.a	n.a	n.a	n.a	n.a	n.a
Total	n.a	n.a	n.a	n.a	n.a	n.a
Total plan outlay	n.a	n.a	n.a	n.a	n.a	n.a

Source: Dzongkhag Administration, Monggar

Table 47. Dzongkhag 9th and 10th Five Year Plan Outlays, Monggar

Sectors	9 FYP		10 FYP	
	Current	Capital	Current	Capital
Civil	95.3	69.2	n.a	182.9
Agriculture	32.8	63.6	n.a	74.021
Livestock	33.5	19.9	n.a	96.5
Forestry	5.5	2.3	n.a	21.9
Education	251.2	363.6	n.a	n.a
Health	50.4	41.2	n.a	121.5
Urban development & housing	15.9	84.1	n.a	72.3
Roads	5.8	12.6	n.a	n.a
Bhutan post	n.a	n.a	n.a	n.a
Telecommunication	n.a	n.a	n.a	n.a
Power	n.a	n.a	n.a	n.a
Trade & industry	n.a	n.a	n.a	n.a
Total	n.a	n.a	n.a	n.a
Total plan outlay	n.a	n.a	n.a	n.a

Source:Dzongkhag Administration,Monggar

Table 48. Dzongkhag 9th and 10th Five Year Plan Expenditure, Monggar

(in million Nu.)

Sectors	9 FYP		10 FYP	
	Current	Capital	Current	Capital
Civil	81.1	78.1	56.95	46.117
Agriculture	32.0	35.9	14.696	50.529
Livestock	35.7	8.7	16.156	7.692
Forestry	15.8	2.3	9.192	2.519
Education	409.6	57.8	n.a	n.a
Health	63.3	40.6	35.446	48.822
Urban development & housing	24.5	33.5	22.288	20.47
Roads	-	7.9	n.a	n.a
Bhutan post	n.a	n.a	n.a	n.a
Telecommunication	n.a	n.a	n.a	n.a
Power	n.a	n.a	n.a	n.a
Trade & industry	n.a	n.a	n.a	n.a
Total	n.a	n.a	n.a	n.a
Total plan expenditure	661.9	264.6	154.7	176.1

Source:Dzongkhag Administration,Monggar

Table 49. Gewog 9th and 10th Five Year Plan Outlays, Monggar

(In million Nu.)

Sectors	9 FYP		10 FYP	
	Current	Capital	Current	Capital
Civil	n.a	n.a	n.a	n.a
Agriculture	n.a	29.82	n.a	187.068
Livestock	n.a	1.885	n.a	28.379
Forestry	n.a	2.162	n.a	17.567
Education	n.a	31.77	n.a	n.a
Health	n.a	13.273	n.a	69.94
Urban development & housing	n.a	n.a	n.a	n.a
Roads	n.a	10.525	n.a	22.045
Bhutan post	n.a	n.a	n.a	n.a
Telecommunication	n.a	n.a	n.a	n.a
Power	n.a	n.a	n.a	n.a
Trade & industry	n.a	n.a	n.a	n.a
Total	n.a	n.a	n.a	n.a
Total plan outlay	n.a	89.4	n.a	325.0

Source:Planning Unit, Monggar, Dzongkhag

Table 50. Gewog 9th and 10th Five Year Plan by Expenditures, Monggar

(In million Nu.)

Sectors	9 FYP		10 FYP	
	Current	Capital	Current	Capital
Civil	n.a	n.a	n.a	n.a
Agriculture	n.a	34.78	n.a	n.a
Livestock	n.a	3.357	n.a	n.a
Forestry	n.a	5.176	n.a	n.a
Education	n.a	11.001	n.a	n.a
Health	n.a	23.691	n.a	n.a
Urban development & housing	n.a	n.a	n.a	n.a
Roads & bridges	n.a	1.857	n.a	n.a
Religion & cultural	n.a	n.a	n.a	n.a
Telecommunication	n.a	n.a	n.a	n.a
Power	n.a	n.a	n.a	n.a
Trade & Industry	n.a	n.a	n.a	n.a
Total	n.a	n.a	n.a	n.a
Total plan outlay	n.a	79.9	n.a	n.a

Source:Dzongkhag Administration,Monggar

Table 51. Employed Persons by Age, Sex and Area of Residence, Monggar, (2008 ~ 2011)

Details	(Number)			
	2008	2009	2010	2011
Total				
Male	n.a	n.a	9500	10000
Female	n.a	n.a	9700	12800
Rural Total				
Male	n.a	n.a	8100	1500
Female	n.a	n.a	8800	1200
Urban Total				
Male	n.a	n.a	1400	8500
Female	n.a	n.a	900	11600

Source : Labour Force Survey, MoLHR

Table 52. Employment by Industries, Age Group and Sex, Monggar, (2009 ~ 2011)

Details	2009	2010	2011
Total labour force (Number)			
Total employed (%)	n.a	n.a	n.a
Male	n.a	n.a	n.a
Female	n.a	n.a	n.a
Unemployment rate			
Total employed in Agriculture (%)			
Male	n.a	n.a	n.a
Female	n.a	n.a	n.a
Total employed in Industries (%)			
Male	n.a	n.a	n.a
Female	n.a	n.a	n.a
Total employed in Services (%)			
Male	n.a	n.a	n.a
Female	n.a	n.a	n.a
Total unemployed by area (%)			
Urban	n.a	n.a	n.a
Rural	n.a	n.a	n.a
Total un-employed by education (%)			
Total unemployed grade XII and above			
Total unemployed below grade XII	n.a	n.a	n.a
Total under employed (%)	n.a	n.a	n.a
Employed by age-group (%)	n.a	n.a	n.a
15-17 years	n.a	n.a	n.a
18-24 years	n.a	n.a	n.a
25-64 years	n.a	n.a	n.a
65 years and above	n.a	n.a	n.a
Unemployed by age-group (%)			
15-17 years	n.a	n.a	n.a
18-24 years	n.a	n.a	n.a
25-64 years	n.a	n.a	n.a
65 years and above	n.a	n.a	n.a
Labor force participation rate (%)	n.a	n.a	n.a
Male participation rate	n.a	n.a	n.a
Female participation rate	n.a	n.a	n.a

Source : Labour Force Survey, MoLHR

Table 53. Child Labour, Monggar, (2010)

Percentage of Children by Involvement in Economic Activity and Household Chores During the Past Week, According to Age Groups, and Percentage of Children Age 5-14 Involved in Child Labour

Child labour	2010
Percentage of children age 5-11 involved in	
Economic activity	
Working outside household	
Paid work	0.2
Unpaid work	1.4
Working for family business	20.3
Economic activity for at least one hour	21.5
Household chores less than 28 hours	32.9
Household chores for 28 hours or more	0.6
Child labour	21.5
Number of children age 5-11	729
Percentage of children age 12-14 involved in	
Economic activity	
Working outside household	
Paid work	4.4
Unpaid work	4
Working for family business	35.8
Economic activity less than 14 hours	31.4
Economic activity for 14 hours or more	6.8
Household chores less than 28 hours	57.8
Household chores for 28 hours or more	2
Child labour	7.5
Number of children age 12-14	335
Total child labour [1]	17.1
Number of children age 5-14 years	1065

Source: BMIS,2010

Table 54. Child Labour and School Attendance, Monggar, (2010)

Percentage of children age 5-14 years involved in child labour who are attending school, and percentage of children age 5-14 years attending school who are involved in child labour

<u>Child Labour and School Attendance</u>	<u>2010</u>
Percentage of children involved in child labour	17.1
Percentage of children attending school	79.3
Number of children age 5-14 years	1065
Percentage of child labourers who are attending school	74.9
Number of children age 5-14 years involved in child labour	182
Percentage of children attending school who are involved in child labour	16.1
Number of children age 5-14 years attending school	844

Source: BMIS,2010

Table 55. Agriculture Production and Average Prices by Commodities, Monggar, (2007 ~ 2010)

Details	2007	2008	2009	2010
Paddy				
Area (Acres)	1733	2043.5	1420	1,014
Production (MT)	2073	2937	1649	868
Price per Kg(Nu.)	n.a	n.a	n.a	n.a
Maize				
Area (Acres)	7229	8516.8	8855	7,715
Production (MT)	8599	8414.41	11625	10,751
Price per Kg(Nu.)	n.a	n.a	n.a	n.a
Wheat				
Area (Acres)	1087	536.2	79	47
Production (MT)	400	383	31	33
Price per Kg(Nu.)	n.a	n.a	n.a	n.a
Barley				
Area (Acres)	1889	835.7	2073	1,068
Production (MT)	866	490.98	945	606
Price per Kg(Nu.)	n.a	n.a	n.a	n.a
Buckwheat				
Area (Acres)	2344	580.7	591	357
Production (MT)	634	313	187	114
Price per Kg(Nu.)	n.a	n.a	n.a	n.a
Millet				
Area (Acres)	n.a	62.96	135	53
Production (MT)	n.a	35.7	43	26
Price per Kg(Nu.)	n.a	n.a	n.a	n.a
Fruits				
Apples				
Number of fruit bearing trees	2005	920	2688	429
Production (Kg)	36000	24530	89000	7,000
Price per Kg(Nu.)	n.a	n.a	n.a	n.a
Oranges/ Mandarin				
Number of fruit bearing trees	38676	23910	36604	26,601
Production (Kg)	1572000	1058130	1504000	904,000
Price per Kg(Nu.)	n.a	n.a	n.a	
Banana				
Number of fruit bearing trees	19176	n.a	6533	6,359
Production (Kg)	217000	n.a	77000	81,000

Price per Dozen(Nu.)	n.a	n.a	n.a	n.a
Pear				
Number of fruit bearing trees	6659	1080	1864	1,217
Production (Kg)	224000	45500	89000	47,000
Price per Kg(Nu.)				
Plum				
Number of fruit bearing trees	4157	1620	1871	1,296
Production (Kg)	169000	47200	93000	71,000
Price per Kg(Nu.)	n.a	n.a	n.a	n.a
Areca Nut				
Production (Pon)	n.a	n.a	192	71
Production (Nu.)	n.a	n.a	1000	n.a
Price per 80 Piece/ Pon(Nu.)				
Vegetables and Spices				
Potato				
Production (kg)	3449000	4958720	3781000	2,055,000
Production (Nu.)	n.a	n.a	n.a	n.a
Price per Kg(Nu.)				
Chili				
Production (kg)	726000	920840	1252000	365,000
Production (Nu.)	n.a	n.a	n.a	n.a
Price per Kg(Nu.)				
Onion				
Production (kg)	n.a	238520	55000	17,000
Production (Nu.)	n.a	n.a	n.a	n.a
Price per Kg(Nu.)				
Cabbage				
Production (kg)	426000	117140	316000	70,000
Production (Nu.)	n.a	n.a	n.a	n.a
Price per Kg(Nu.)				
Cauliflower				
Production (kg)	84000	49580	66000	30,000
Production (Nu.)	n.a	n.a	n.a	n.a
Price per Kg(Nu.)				
Asparagus				
Production (Bundles)	4000	24180	6000	3,000
Production (Nu.)	n.a	n.a	n.a	n.a
Price per bundle (Nu.)				
Tomato				
Production (Kg)	11000	18320	19000	5,000

Production (Nu.)	n.a	n.a	n.a	n.a
Price per Kg(Nu.)				
Carrot				
Production (Kg)	n.a	24950	25000	7,000
Production (Nu.)	n.a	n.a	n.a	n.a
Price per Kg(Nu.)				
Egg Plant (Brinjal)				
Production (Kg)	101000	n.a	50000	121,000
Production (Nu.)	n.a	n.a	n.a	n.a
Price per Kg(Nu.)				
Raddish				
Production (Kg)	1161000	625460	561000	263,000
Production (Nu.)	n.a	n.a	n.a	n.a
Price per Kg(Nu.)				
Ginger				
Production (Kg)	349000	71230	21000	19,000
Production (Nu.)	n.a	n.a	n.a	n.a
Price per Kg(Nu.)				
Cardamom				
Production (Kg)	n.a	3360	n.a	n.a
Production (Nu.)	n.a	n.a	n.a	n.a
Price per Kg(Nu.)				
Garlic				
Production (Kg)	52000	367120	108000	53,000
Production (Nu.)	n.a	n.a	n.a	n.a
Price per Kg(Nu.)				
Oil seeds and legumes				
Lentils				
Production (Kg)	n.a	n.a	n.a	n.a
Production (Nu.)	n.a	n.a	n.a	n.a
Price per Kg(Nu.)				
Mustards				
Production (Kg)	126000	168490	68000	29,000
Production (Nu.)	n.a	n.a	n.a	
Price per Kg(Nu.)				
Beans				
Production (Kg)	598000	355400	416957	138,000
Production (Nu.)	n.a	n.a	n.a	n.a
Price per Kg(Nu.)				

Source: Agriculture Sector, Monggar, Dzongkhag

Table 56. Agriculture Infrastructures and Other Facilities , Monggar, (2007 ~ 2010)

Details	2007	2008	2009	2010
Irrigation for agriculture				
Number of irrigation channels				
Functional	n.a	60	60	66
Non-Functional	n.a	3	3	0
Total length of channels (Km)	n.a	123	123	129
Area covered by irrigation (Acres)	n.a	1,305	1,305	1,305
Number of households benefitted	n.a	1,798	1,798	1,798
Number of food processing units				
Number of agriculture mills ¹	n.a	307	422	822
Number of livestock product processing units	n.a	2	2	3
Number of farmer association/groups				
Agriculture	13	18	18	23
Livestock	4	5	5	5
Forestry	5	5	7	21
Number of power tillers	49	57	57	69

Note: ¹Including two traditional mills

Source: Agriculture Sector, Monggar Dzongkhag

Table 57: Livestock Population by Types, Monggar, (2007~2010)

Details	2007	2008	2009	2010
Livestock (Number)				
Cattle				
Local breed				
Male	8039	7667	7159	6,551
Female	16288	15902	14638	12,554
Improved breed				
Male	947	887	891	954
Female	4555	3982	3928	3,765
Mithun	49	38	32	365
Bufallo				
Male	n.a	n.a	n.a	n.a
Female	n.a	n.a	n.a	n.a
Horse				
Local breed	1971	2093	1776	1,717
Improved breed	63	60	61	34
Yak				
Male	n.a	n.a	n.a	n.a
Female	n.a	n.a	n.a	n.a
Sheep				
Local breed	62	29	13	11
Improved breed	n.a	n.a	n.a	n.a
Pig				
Local breed	1243	1126	609	549
Improved breed	918	1579	529	456
Poultry				
Local breed	12275	11812	13435	12,743
Improved breed	6334	2944	1779	1,957
Goat	313	202	187	150

Note: Mithun includes Bamin, Jatsa & Jatsam

Source: Livestock Sector, Monggar, Dzongkhag

Table 58: Livestock Productions, Monggar, (2007~2010)

Details	2007	2008	2009	2010
Livestock products				
Fresh Milk (Liters)	1029.53	1471.73	2236.46	1,859,388
Butter (Kg)	104400	140410	165403.01	269,795
Fresh Cheese (Kg)	259700	228390	320245.62	204,708
Processed cheese (kg)	n.a	n.a	160	n.a
Eggs (Dozen)	53739	74893.08	109206.67	31,569
Fish (Kg)	n.a	n.a	n.a	n.a
Beef (Kg)	52980	39530	147980	98,507
Pork (Kg)	22310	19660	15495	13,267
Yak Meat (Kg)	n.a	n.a	n.a	n.a
Mutton (Kg)	n.a	n.a	n.a	10
Honey (Gm)	n.a	n.a	n.a	n.a
Chicken (Kg)	10	140	308	67

Source: Livestock Sector, Monggar, Dzongkhag

Table 59. Forestry Production, Monggar, (2007 ~ 2010)

Details	2007	2008	2009	2010
Wood Forest Product ¹				
Log Form (Cft)	46.26	4936.67	903597	105,389
Fire wood (Cubic metres)	23619	3434.68	4352.19	5,243
Flag Poles (Number)	2526	1881	2305	3,004
Shinglap (Number of trees)	1398	256	253	66
Cham (Number of trees)	6477	1717	1047	811
Tsim (Number of trees)	2580	n.a	508	280
Non-Wood Forest Product ²				
Mushroom (Kg)	n.a	n.a	n.a	n.a
Mushroom (Nu.)	n.a	n.a	n.a	n.a
Medicinal and Aromatic plants (Kg)	n.a	n.a	n.a	n.a
Cordyceps (Kg)	N.A	N.A	N.A	N.A
Cordyceps (Nu.)	N.A	N.A	N.A	N.A
Sand (Truck load)	1562.5	4265	524	864.5
Stones (Truck load)	4096	992	1306	11
Bamboo (Number)	5792	12891	17014	9,972
Cane (Bundles)	25	64	163	127
Lemon grass (Kg)	1652	2358.5	180.06	180
Mining Sites (Number)	n.a	n.a	n.a	n.a
Quarry Sites	1	1	1	1
Municipal Waste Disposal Sites	2	2	2	2
Environmental Clearance Issued	20	30	43	115

Note: Cordyceps amount collected only for auction royalty charges.

Source: 1 Divisional Forest, 2 Thromsingla National Park, Monggar

Table 60. Electricity Generating Stations and Capacities, Monggar, (2009 & 2010)

Stations	2009			2010		
	Installed capacity (no.x MW)	Generating capacity (MW)	Peak generation (MU)	Installed capacity (no.x MW)	Generating capacity (MW)	Peak generation (MU)
Khalangzi MHPP	0.3	0.2	297.97	0.3	0.2	200
KHPC	n.a	n.a	n.a	n.a	n.a.	n.a
Diesel generation stations Mongar	0.25	0.25	43.02	0.25	0.25	20

Source : Department of Energy, MoEA, Monggar (BPC)

Table 61. Number of Households by Area, Monggar, (2009 ~ 2011)

Details	2009	2010	2011
Total number of household in Urban	n.a	n.a	n.a
Total number of household in Rural	n.a	n.a	n.a

Source: BMIS, 2010

Table 62. Number of Building Permits issued by Towns, Monggar, (2009 ~ 2011)

new buildings	2008	2009	2010	2011
Monggar	1	2	2	2
Gyelposhing	1	n.a	1	n.a

Source: Dzongkhag Municipal, Monggar, Dzongkhag

Table 63. Number of Establishment by Type and Size, Monggar, 2009 ~ 2011)

Details	2009	2010	2011
Industries by type (Number)			
Agro based	1	1	0
Forestry based	9	12	9
Mineral based	n.a	4	0
Others	125	1	1
Industries by scale (Number)			
Large	n.a	0	0
Medium	1	0	2
Small	n.a	6	9
Cottage	132	62	42
Contract firms (Number)			
Large	n.a	0	0
Medium	n.a	0	0
Small	18	13	10

Source: Regional Trade Office, Monggar

Table 64. Number of Wholesale, Retail Trade and Industrial Licenses Issued, Monggar, (2007 ~ 2011)

Details	(Number)				
	2007	2008	2009	2010	2011
Trade and Industries					
Micro & retail trade licences issued	92	91	89	95	122
Micro & retail trade licences in operation	72	81	87	89	122
Wholesale trade licences issued	na	1	2	0	1
Wholesale trade licences in operation	na	1	1	0	1
Services licences issued	47	46	123	68	53
Services licences in operation	24	37	115	65	53
Manufacturing licenses issued	5	4	12	18	10
Manufacturing licenses in operation	2	4	10	18	10

Source: Regional Trade Office, Monggar

Table 65. Number of Public Transport and Facilities, Monggar, (2007 ~ 2011)

(Number)

Details	2007	2008	2009	2010	2011
Public Service Transport					
Bus	n.a	4	4	4	4
Taxi	n.a	n.a	n.a	1	5
Motor vehicle registration					
Heavy	n.a	n.a	n.a	n.a	n.a
Medium	n.a	n.a	n.a	3	3
Small	n.a	n.a	n.a	21	40
Two wheeler	n.a	n.a	n.a	22	18
Auto Mobile workshop ³	2	2	2	4	4
Bus stations	1	1	1	1	1

Source: RSTA Regional Office, Monggar

Table 66: Roads and Bridges, Monggar, (2007~2011)

Details	2007	2008	2009	2010	2011
Roads (Length in Km)					
Farm roads ¹	61.8	101.0	113.0	157.0	309.0
Feeder roads ²	51.2	51.2	51.2	51.2	63.5
Forest roads ¹	41.3	41.3	41.3	41.3	41.3
Highways/Dzongkhag roads	198	198	198	198	198
Bridges (Number)					
Suspension bridge ¹	n.a	11	11	11	11
Suspended ¹	n.a	13	13	13	14
Bailey bridges ²	n.a	14	14	14	14
Traditional bridges ¹	1	1	1	1	1

Source: ¹Dzongkhag Engineering Section, ²Department of Roads, Monggar

Note: Farm road data as of June 2011.

Table 67. Telecommunications, Monggar, (2007 ~ 2011)

(Number)

Telecommunications	2007	2008	2009	2010	2011
Households with fixed telephone connections	n.a	n.a	877	877	853
Tashi cell users	n.a	n.a	n.a	n.a	n.a
B.mobile users	n.a	n.a	n.a	n.a	5,091
Community information centres	n.a	n.a	6	6	10
Gewogs accessible to mobile services	n.a	n.a	13	15	17
Households with internet access	n.a	n.a	160	160	285
Bhutan post office	2	2	2	2	2

Source: Gewog Administration Office & Regional Office, Monggar, Dzongkhag.

NOTE:-1. B-Mobile users, this give figure is based on SIM sold till October 2011.

2. H/H with internet access , it is the figure of broadband connections only under Monggar Dzongkhag.

Table 68. Number of Establishment in Bnking and Finance, (Monggar), (2009 ~ 2011)

(number)

Number of establishments	2009	2010	2011
RICBL	1	1	1
BDFCL	1	1	1
BNB	1	1	1
Druk PNB	n.a	n.a	n.a
T Bank	n.a	n.a	n.a
Bhutan insurance limited	n.a	n.a	1
BOB	1	1	1

Source: Financial Institutions, Monggar, Dzongkhag

Table 69. Number of account holders in Banks, (Monggar), (2010)

Number of facilities	Number of account holders (2010)				
	Loan	savings	current	fixed deposit	recurring deposit
RICB	156	n.a	n.a	n.a	n.a
BDFCL	2195	3445	4	53	49
BNB	461	2450	17	177	2
PNB	n.a	n.a	n.a	n.a	n.a
T Bank	n.a	n.a	n.a	n.a	n.a
Bhutan insurance limited	n.a	n.a	n.a	n.a	n.a
BOB	878	5305	378	1510	n.a

Source: Financial Institutions, Monggar, Dzongkhag

Table 70. Number of Administrative Units, Monggar, (2007 ~ 2011)

Details	2007	2008	2009	2010	2011
Administration (Number)					
Drungkhags	1	1	1	1	1
Gewogs	17	17	17	17	17
Chiwogs	168	168	168	168	88
Villages	683	683	683	683	683
Households	n.a	n.a	n.a	n.a	n.a
Towns	5	5	5	5	5
Number of Police stations	2	2	2	2	2

Table 71. Recreation, Tourist Visitors and Accommodation, Monggar, (2007 ~ 2011)

Details	2007	2008	2009	2010	2011
Number of children park	n.a	n.a	n.a	1	1
Number of hotels	n.a	n.a	n.a	11	12
Number of restaurants	n.a	n.a	n.a	10	11
Number of drayangs	n.a	n.a	n.a	n.a	n.a
Number of discotheques	n.a	n.a	n.a	n.a	n.a
Number of tourist visitors	n.a	n.a	n.a	n.a	n.a

Source: Administration Office, Monggar, Dzongkhag

National Statistics Bureau
ROYAL GOVERNMENT OF BHUTAN
P.O. Box No. 338 Thimphu
Telephone No: +975-2-322753/333296/325402
Fax: +975-2-323069

www.nsb.gov.bt

ISBN-978-99936-28-11-8