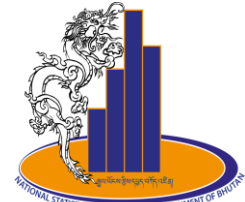


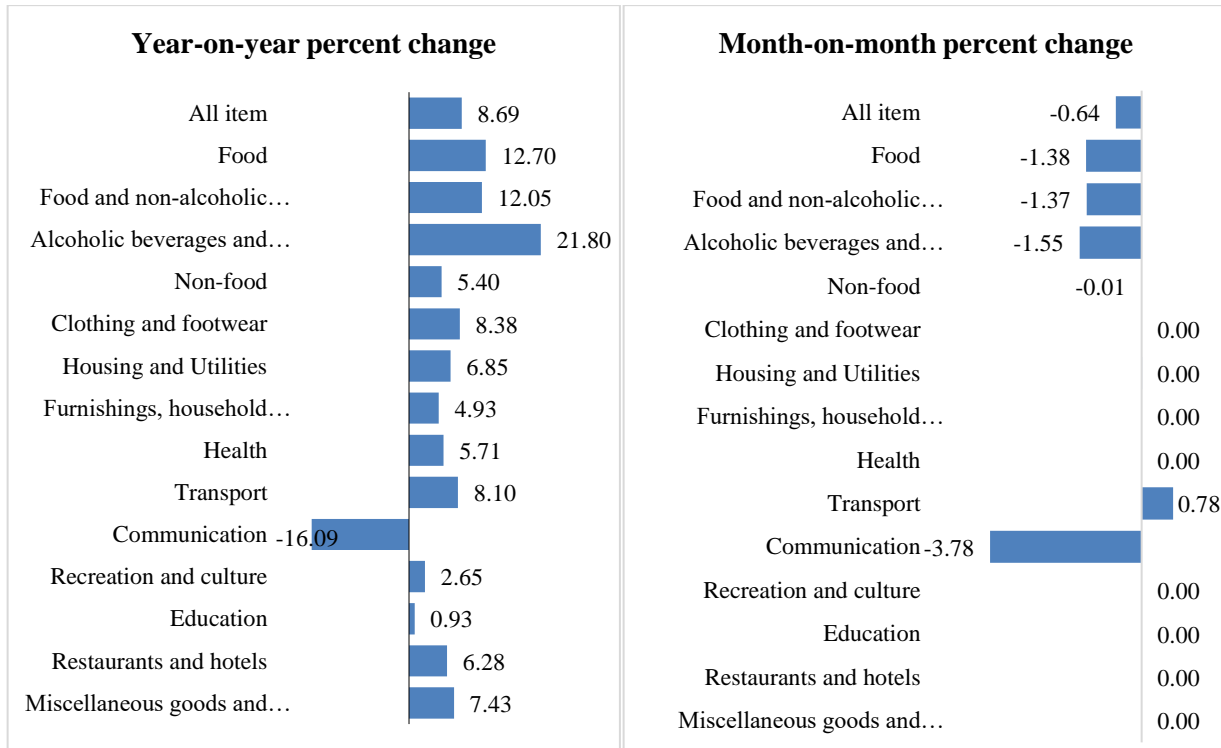


དབལ་ལྗན་འབྲུག་གཞུང་།
 རྒྱལ་ཡོངས་ཚེས་དཔྱད་བཞོན་འཛིན།
Royal Government of Bhutan
National Statistics Bureau



Consumer Price Index (CPI): May 2021

(Release date: 13 July 2021)



The prices of goods and services consumed by the households are 8.69 percent costlier in May compared to the same month of previous year. This is a drop of 0.09 percentage point compared to April while the rate has doubled compared to the rate in May last year which was at 4.17 percent. Food prices continue to be the main driver of inflation at 12.70 percent. Within food, the betel nut & betel leaves recorded the highest increase with 40.75 percent, followed by meat and cooking oils at 37.21 percent and 20.21 percent respectively. Prices of non-food went up by 5.40 percent in the past one year with garments and transport recording the highest increase of more than 8 percent. Increase in transport is mainly due to price of petrol and diesel which went up by more than 60 percent on average. Communication prices dropped further by 16.09 percent with the reduction in the call charges in May.

Month-on-month prices decreased by 0.64 percent (-0.64) from April to May with both food and non-food group recording a decrease of 1.38 percent and 0.01 percent respectively. Drop in vegetable prices contributed to the decrease in food group, while for non-food, it is due to drop in communication price (call charges).

Chart 1: Percent contribution to overall change by Division

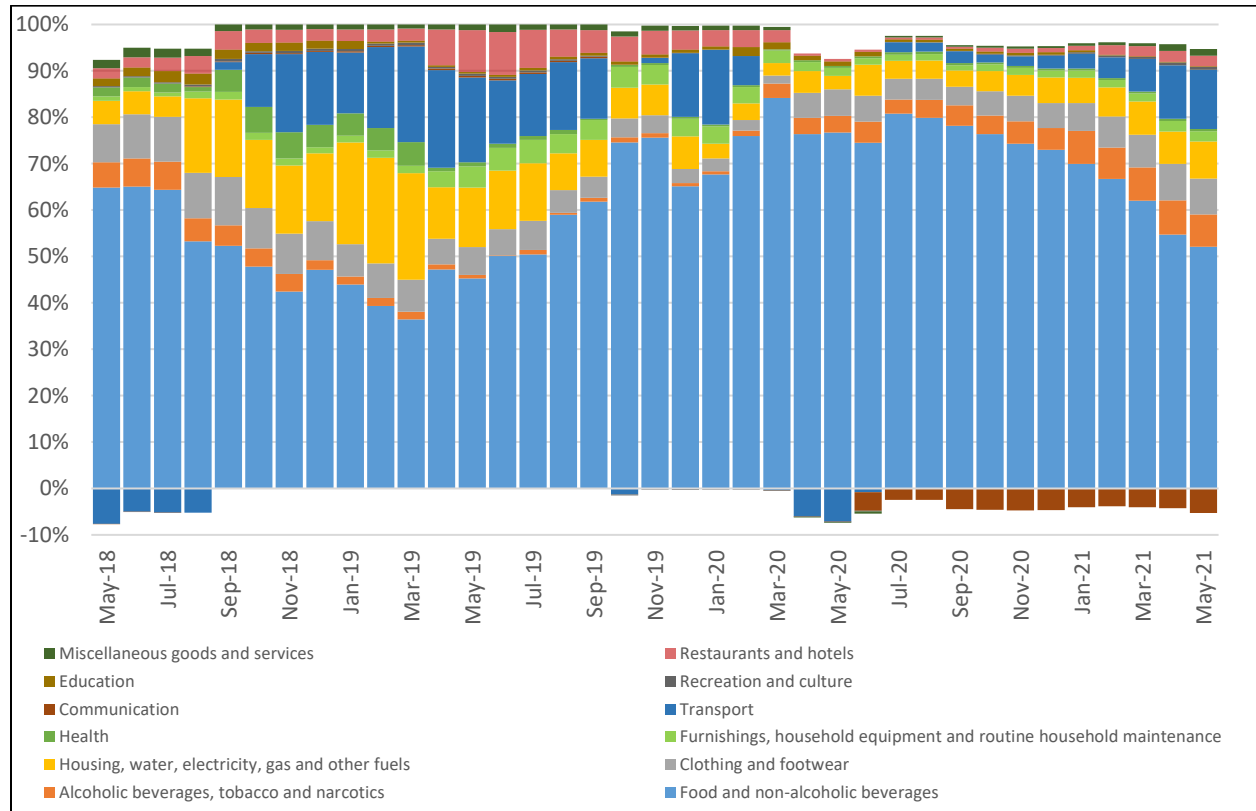


Chart 2: Index

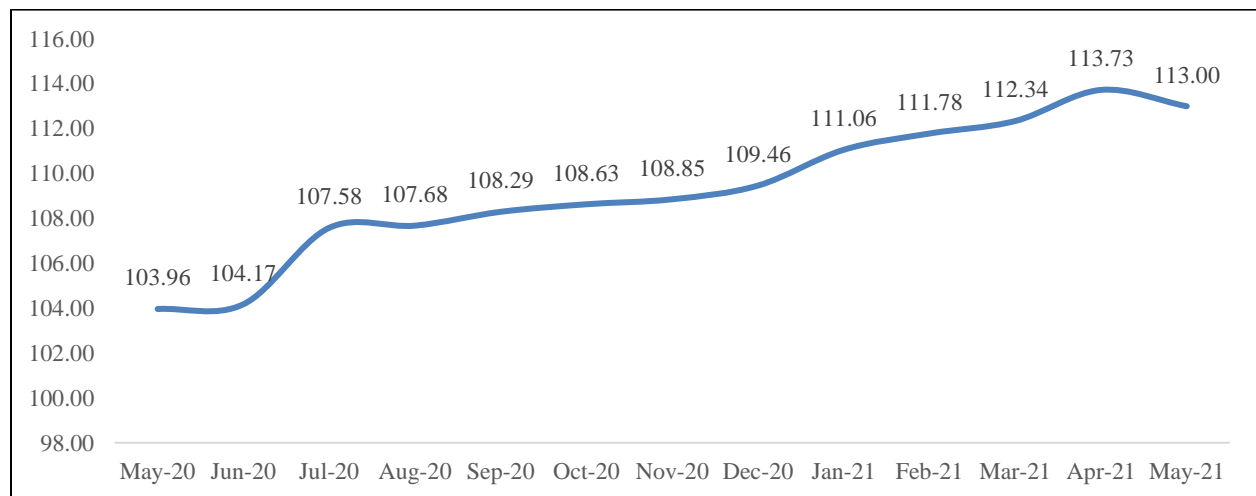


Chart 3: Year-on-year percent change

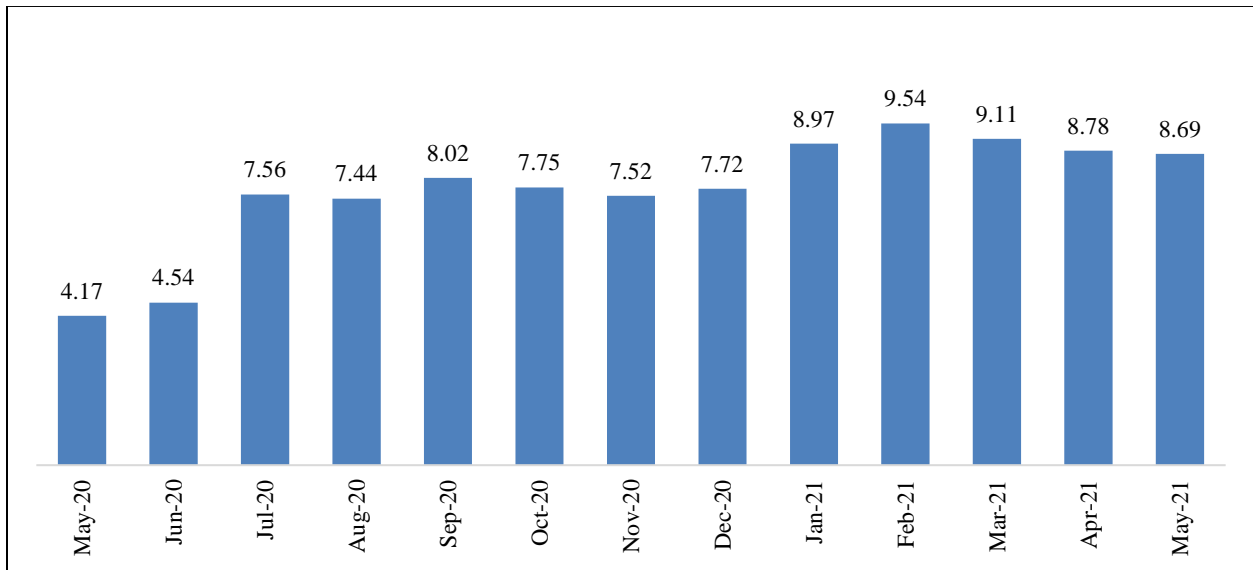


Chart 4: Month-on-month percent change

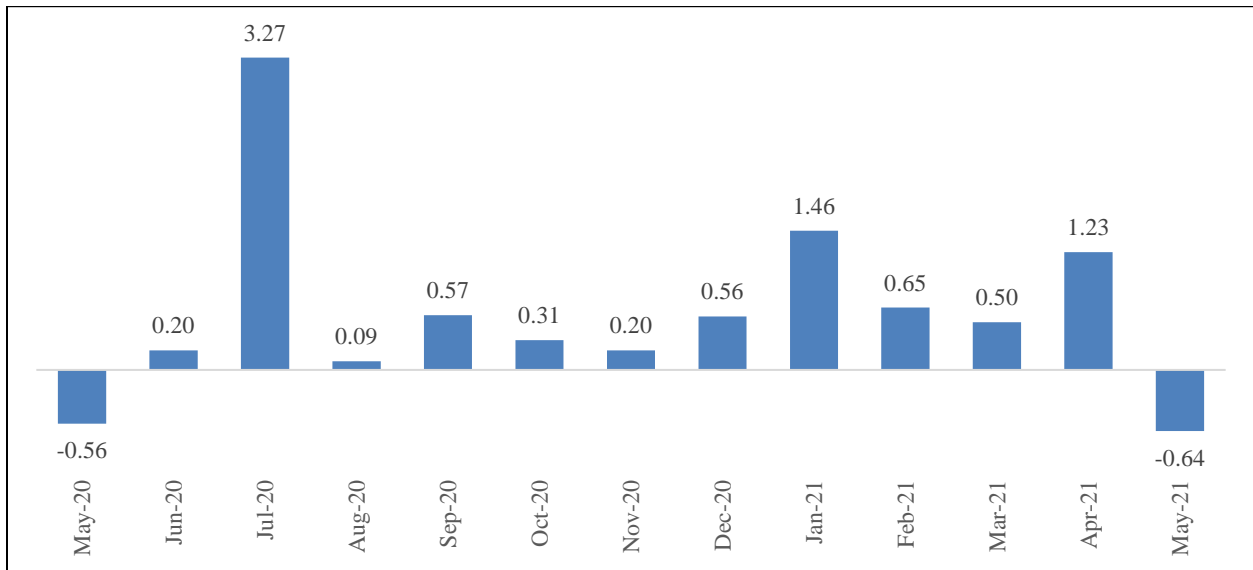


Table 1: Index (April 2019 = 100)

Division	Weight (%)						
		Dec-20	Jan-21	Feb-21	Mar-21	Apr-21	May-21
All item	100.00	109.46	111.06	111.78	112.34	113.73	113.00
Food	45.95	118.25	120.91	121.41	122.22	123.61	121.90
Food and non-alcoholic beverages	42.78	118.61	120.74	121.24	121.87	123.17	121.48
Alcoholic beverages and betel nuts	3.17	113.57	123.12	123.75	126.94	129.79	127.79
Non-food	54.05	102.51	103.32	104.20	104.58	105.95	105.94
Clothing and footwear	9.17	105.37	106.88	108.06	108.06	111.77	111.77
Housing and Utilities	11.57	104.50	105.43	106.55	107.15	108.18	108.18
Furnishings, household equipment and routine household maintenance	4.44	104.27	105.32	105.54	105.55	107.33	107.33
Health	0.81	105.65	106.63	106.63	106.63	108.43	108.43
Transport	15.63	102.31	102.91	103.49	104.33	105.03	105.85
Communication	3.25	87.41	87.41	87.42	87.42	87.20	83.91
Recreation and culture	2.30	100.54	101.29	101.56	101.56	102.31	102.31
Education	1.35	104.75	104.75	104.75	104.75	104.75	104.75
Restaurants and hotels	3.62	102.21	102.72	106.24	106.24	107.03	107.03
Miscellaneous goods and services	1.92	102.34	103.31	103.88	103.95	107.04	107.04

Table 2: Year-on-year percent change

Division	Weight (%)						
		Dec-20	Jan-21	Feb-21	Mar-21	Apr-21	May-21
All item	100.00	7.72	8.97	9.54	9.11	8.78	8.69
Food	45.95	14.82	16.89	16.98	15.25	13.16	12.70
Food and non-alcoholic beverages	42.78	14.95	16.48	16.56	14.70	12.49	12.05
Alcoholic beverages and betel nuts	3.17	13.07	22.54	22.75	22.86	22.62	21.80
Non-food	54.05	2.02	2.67	3.59	4.16	5.19	5.40
Clothing and footwear	9.17	5.16	6.59	7.77	7.77	8.38	8.38
Housing and Utilities	11.57	4.16	4.72	5.73	6.33	5.89	6.85
Furnishings, household equipment and routine household maintenance	4.44	3.00	3.62	3.81	3.82	4.93	4.93
Health	0.81	4.27	5.19	5.19	5.19	5.71	5.71
Transport	15.63	1.55	2.04	3.09	4.59	7.21	8.10
Communication	3.25	-12.58	-12.58	-12.57	-12.57	-12.79	-16.09
Recreation and culture	2.30	0.86	1.59	1.86	1.86	2.65	2.65
Education	1.35	3.42	3.42	0.93	0.93	0.93	0.93
Restaurants and hotels	3.62	2.17	2.63	6.09	6.09	6.28	6.28
Miscellaneous goods and services	1.92	1.99	2.76	3.33	3.40	7.43	7.43

Table 3: Month-on-month percent change

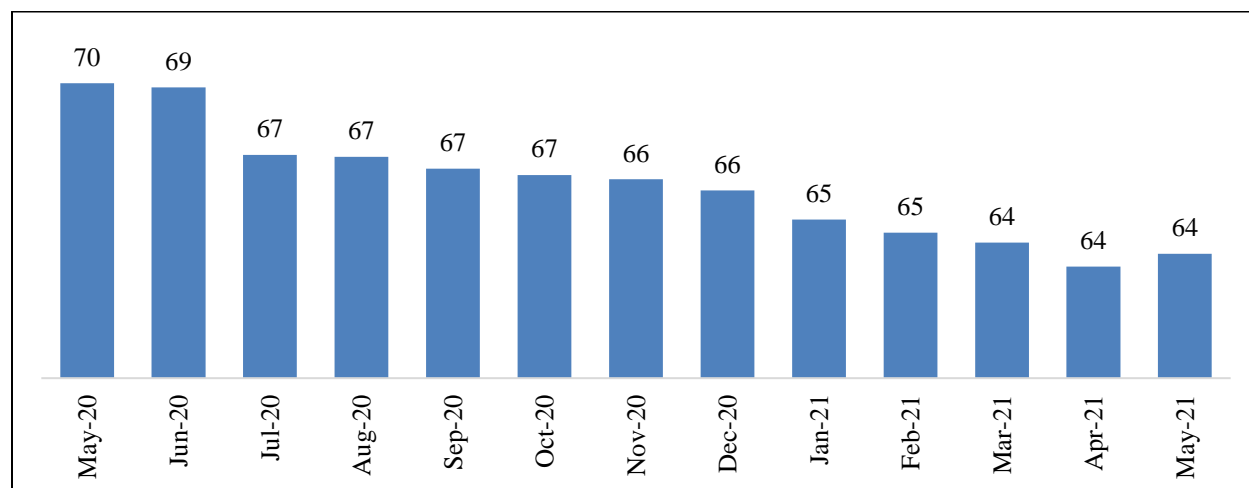
Division	Weights (%)	Month-on-month percent change					
		Dec-20	Jan-21	Feb-21	Mar-21	Apr-21	May-21
All item	100.00	0.56	1.46	0.65	0.50	1.23	-0.64
Food	45.95	0.78	2.24	0.42	0.66	1.14	-1.38
Food and non-alcoholic beverages	42.78	0.84	1.80	0.41	0.52	1.06	-1.37
Alcoholic beverages and betel nuts	3.17	0.00	8.41	0.52	2.57	2.25	-1.55
Non-food	54.05	0.37	0.80	0.85	0.36	1.31	-0.01
Clothing and footwear	9.17	0.00	1.43	1.10	0.00	3.43	0.00
Housing and utilities	11.57	0.89	0.89	1.06	0.56	0.96	0.00
Furnishings, household equipment and routine household maintenance	4.44	0.00	1.01	0.21	0.01	1.69	0.00
Health	0.81	0.00	0.93	0.00	0.00	1.69	0.00
Transport	15.63	0.63	0.58	0.56	0.82	0.66	0.78
Communication	3.25	0.00	0.00	0.01	0.00	-0.25	-3.78
Recreation and culture	2.30	0.00	0.74	0.27	0.00	0.74	0.00
Education	1.35	0.00	0.00	0.00	0.00	0.00	0.00
Restaurants and hotels	3.62	0.00	0.50	3.43	0.00	0.74	0.00
Miscellaneous goods and services	1.92	0.00	0.95	0.55	0.07	2.98	0.00

Table 4: Annual Index (April 2019= 100)

Division	Weight (%)	Annual Index (April 2019= 100)							
		2014	2015	2016	2017	2018	2019	2020	
All item	100.00	83.84	87.65	90.47	94.95	97.54	100.20	105.84	
Food	45.95	80.47	83.06	86.26	92.37	96.93	100.26	111.38	
Food and non-alcoholic beverages	42.78	79.87	82.49	85.81	92.21	96.76	100.29	111.67	
Alcoholic beverages and betel nuts	3.17	88.03	90.27	91.98	94.45	98.94	99.86	107.51	
Non-food	54.05	86.16	90.84	93.39	96.72	97.95	100.15	101.39	
Clothing and footwear	9.17	86.03	89.75	92.42	95.85	98.35	100.04	103.27	
Housing and Utilities	11.57	82.58	87.91	90.74	96.37	97.73	100.20	102.52	
Furnishings, household equipment and routine household maintenance	4.44	90.54	93.43	95.16	96.48	98.06	100.57	102.95	
Health	0.81	91.69	94.23	94.98	95.97	97.85	100.33	103.76	
Transport	15.63	85.54	92.81	96.28	98.11	97.42	100.07	100.59	
Communication	3.25	101.38	99.65	99.70	99.71	99.79	100.02	94.27	
Recreation and culture	2.30	97.45	98.60	98.02	99.18	99.60	99.93	100.04	
Education	1.35	81.48	86.81	92.78	96.22	99.41	100.64	104.05	
Restaurants and hotels	3.62	78.54	84.31	87.00	89.13	94.29	99.42	101.00	
Miscellaneous goods and services	1.92	88.77	92.14	94.42	96.29	98.43	100.05	101.07	

Table 5: Annual percent change

Division	Weight (%)	Percent change						
		2014	2015	2016	2017	2018	2019	2020
All item	100.00	8.27	4.55	3.22	4.96	2.72	2.73	5.63
Food	45.95	10.33	3.22	3.86	7.09	4.93	3.44	11.09
Food and non-alcoholic beverages	42.78	10.08	3.27	4.02	7.46	4.94	3.64	11.35
Alcoholic beverages and betel nuts	3.17	13.27	2.54	1.90	2.68	4.75	0.94	7.66
Non-food	54.05	6.91	5.44	2.80	3.56	1.28	2.24	1.24
Clothing and footwear	9.17	6.99	4.32	2.97	3.71	2.61	1.72	3.23
Housing and Utilities	11.57	9.34	6.45	3.22	6.21	1.41	2.53	2.32
Furnishings, household equipment and routine household maintenance	4.44	7.62	3.20	1.85	1.39	1.63	2.56	2.37
Health	0.81	1.71	2.77	0.80	1.05	1.96	2.54	3.41
Transport	15.63	8.46	8.51	3.73	1.90	-0.70	2.72	0.52
Communication	3.25	-2.83	-1.71	0.05	0.01	0.08	0.23	-5.75
Recreation and culture	2.30	2.09	1.18	-0.58	1.18	0.42	0.33	0.12
Education	1.35	6.93	6.55	6.88	3.71	3.31	1.24	3.39
Restaurants and hotels	3.62	3.52	7.35	3.19	2.44	5.79	5.44	1.59
Miscellaneous goods and services	1.92	6.97	3.80	2.48	1.98	2.23	1.65	1.02

Chart 5: Purchasing Power of Ngultrum (PPN)

The purchasing power of Ngultrum as measured by CPI is Nu. 64 as of May 2021 compared to December 2012. This means, Nu. 100 in May 2021 is worth only Nu. 64 at December 2012 prices. The PPN has dropped by 8.00 percent in the past 12 months (from May 2020 to May 2021) due to price increase in the economy.

Technical notes

Concept and Definition of CPI

The Consumer Price Index (CPI) is a measure of average price changes in the basket of goods and services purchased by households over time. It shows how much, on average, prices of goods and services have increased or decreased from a particular reference period, commonly known as the Index reference.

Scope and coverage

The CPI covers the goods and services consumed by the households and a sample of goods and services are selected using the household expenditure data to measure the inflation experienced by the households. Prices of the sampled goods and services are collected from urban areas in 20 Dzongkhags on monthly, quarterly and annual frequency depending on the price volatility of the items. The outlets for data collection are selected based on purposive sampling considering the popularity of the outlet and availability of the items.

CPI baskets has a total of 113 items (314 varieties) classified according to Classification of Individual Consumption According to Purpose (COICOP). Total of about 450 outlets are selected for pricing.

Weights

Weights reflect the relative importance or share of the individual item to the total consumption expenditures of the households. It determines the impact an individual item will have to the overall inflation. Weight for the current CPI is derived using the household consumption expenditure data from the Bhutan Living Standard Survey (BLSS) conducted every five years. The current weight is based on BLSS 2017.

Price reference and index reference

Price reference is the period for which the prices are used as denominator for the index calculation. The price reference period for CPI is April 2019.

Index reference period is the period for which the index is set as 100. The index reference period is April 2019.

Index Calculation Formula

Geometric Modified Laspeyres formula is used to calculate the CPI:

$$P_{GYo} = \prod_{i=1}^n \left(\frac{P_i^t}{P_i^o} \right)^{S_i^b}$$

S_i^b = Expenditure Shares of the Base Period (weight from BLSS)

P_i^t = Current Period Price

P_i^o = Previous Period Price

$\left(\frac{P_i^t}{P_i^o} \right)$ = Price Relatives

Calculating Percent Changes

Month-on-month percent change measures the average price change between current month and previous month and serves as useful indicator of short-term price movement.

Year-on-year percent change measures the average price change between the specific month with that of the same month of the previous year.

Following is an example of computing index point and percent changes:

- Index point change

All item price index	104.50
Less previous price index	101.25
Equals index point change	3.25

- Index percent change

Index point change	3.25
Divided by Previous Price Index	101.25
Equals	0.032
Result multiplied by 100	0.032 x 100
Equals percent changes	3.2