

**AGRICULTURE STATISTICS  
2012**



**DEPARTMENT OF AGRICULTURE  
MINISTRY OF AGRICULTURE & FORESTS  
ROYAL GOVERNMENT OF BHUTAN  
THIMPHU: BHUTAN**

**Contact Address:**

Extension & Information Management  
Department of Agriculture  
Ph#336462/322228; Fax No. 336186/323562  
Email: [imsdoa@moaf.gov.bt](mailto:imsdoa@moaf.gov.bt)

Published by: Department of Agriculture, MoAF, Thimphu

# Table of Contents

A:	Methodology.....	1
B:	Survey Coverage and Scope.....	4
C.	SUMMARY FINDINGS.....	7

## Part 1 National Level Statistics

### 1 Demographic Characteristics..... 8

Table 1.1	: Farming Households Population 2012.....	8
-----------	---	---

Table 1.2	: Dzongkhag wise estimated total population residing on farm by ... sex in 2012.....	9
-----------	---	---

### 2 Land Utilization 2012..... 12

### 3 Crop Production..... 14

Table 3.1	: Cereal, Legumes& Pulses, Oilseeds, Roots /Tubers, Spices, Cucur... bits and Vegetable production in 2012.....	14
-----------	--	----

Table 3.2	: Paddy harvested area, production and yield (2012).....	16
-----------	--	----

Table 3.3	: Maize harvested area, production and yield (2012).....	17
-----------	--	----

Table 3.4	: Wheat harvested area, production and yield (2012).....	18
-----------	--	----

Table 3.5	: Buckwheat harvested area, production and yield(2012).....	19
-----------	---	----

Table 3.6	: Barley harvested area, production and yield(2012).....	20
-----------	--	----

Table 3.7	: Millet harvested area, production and yield (2012).....	21
-----------	---	----

Table 3.8	: Potato harvested area, production and yield (2012).....	22
-----------	---	----

Table 3.9	: Chilli harvested area, production and yield (2012).....	23
-----------	---	----

Table 3.10	: Cabbage harvested area, production and yield (2012).....	24
------------	--	----

Table 3.11	: Other vegetables production (MT) for 2012.....	25
------------	--	----

Table 3.12	: Spices production (MT) for 2012.....	27
------------	--	----

Table 3.13	: Oil seeds production (MT) for 2012.....	28
------------	---	----

Table 3.14	: Cucurbits production (MT) for 2012.....	29
------------	---	----

### 4 Fruit production..... 30

Table 4.1	: Horticulture fruit crop production in 2012.....	30
-----------	---	----

Table 4.2	: Apple production and yield in 2012.....	31
-----------	---	----

Table 4.3	: Mandarin production and yield (2012).....	32
-----------	---	----

Table 4.4	: Areca Nut production and yield (2012) .....	33
<b>5</b>	<b>Crop Utilization for 2012 .....</b>	<b>34</b>
Table a.5.1	: Qty retained for seeds and animal feeds by Crop Type in MT .....	34
Table a.5.2	: Qty retained for seeds and animal feeds by Crop Name in MT ....	34
Table b.5.1	: Qty sold (MT), Unit Price (Nu/kg) and Amt Earned (Mil. Nu) by .. Crop Type.....	36
Table b.5.2	: Qty sold (MT), Unit Price (Nu/kg) and Amt Earned (Mil Nu) by ... Crop Name.....	36
<b>6</b>	<b>Fruit Utilization .....</b>	<b>38</b>
Table 6.1	: Fruit Utilization for 2012 .....	38
<b>7</b>	<b>HH Cash income .....</b>	<b>39</b>
Table 7.1	: Dzongkhag wise proportion of HHs having earned / Not Earned ... Cash income from livestock, forest products and other activities.....	39
Table 7.2	: Cash income from livestock, forest products and other activities in year 2012 .....	41
Table 7.3	: Cash income from processed cereals products .....	41
<b>8</b>	<b>Use of Fertilizers and PP Chemicals.....</b>	<b>42</b>
Table a.8.1	: Proportion of Application of Chemical Fertilizes in Crops by Crop Type.....	42
Table a.8.2	: Proportion of Application of Chemical Fertilizers in Crops by Crop Name.....	42
Table a.8.3	: Proportion of Application of PP Chemicals in Crops by Crop Type.....	43
Table a.8.4	: Proportion of Application of PP Chemicals in Crops by Crop Name.....	44
Table b.8.1	: Proportion of Application of Chemical Fertilizers in Fruit trees ..	45
Table b.8.2	: Proportion of Application of PP Chemicals in Fruit trees .....	45

<b>9</b>	<b>Farming Household food self-sufficiency .....</b>	<b>47</b>
Table 9.1	: Proportion of farming households by food self-sufficiency (2012).....	47
Table 9.2	: Food shortage coping mechanism in 2012 .....	48
<b>10</b>	<b>Farming Constrains faced .....</b>	<b>50</b>
Table 10.1	: Proportion of HHs affected by the various farming constrains in ... year 2012 .....	50
<b>11</b>	<b>Major Crop Damage by natural Calamities in year 2012 .....</b>	<b>51</b>
<b>12</b>	<b>Road Access in 2012 .....</b>	<b>55</b>

## **Part 2 Dzongkhag Wise Crop Production Information**

Bumthang Dzongkhag .....	59
Chhukha Dzongkhag.....	60-62
Dagana Dzongkhag.....	63-64
Gasa Dzongkhag.....	65
Haa Dzongkhag .....	66-67
Luentse Dzongkhag .....	68-69
Mongar Dzongkhag .....	70-72
Paro Dzongkhag .....	72-73
Pemagatshel Dzongkhag .....	74-75
Punakha Dzongkhag.....	76-77
Samdrup Jongkhar Dzongkhag .....	78-79
Samtse Dzongkhag .....	80-83
Sarpang Dzongkhag .....	84-85
Thimphu Dzongkhag .....	86
Trashigang Dzongkhag.....	87-89
Trashiyangtse Dzongkhag .....	90-91
Trongsa Dzongkhag .....	92-93
Tsirang Dzongkhag .....	94-95
Wangdue Dzongkhag .....	96-97
Zhemgang Dzongkhag .....	98-100





སོ་ནམ་ལས་ཁུངས། སོ་ནམ་དང་ནགས་ཚལ་ལྷན་ཁག། དཔལ་ལྷན་འབྲུག་གཞུང།

DEPARTMENT OF AGRICULTURE  
MINISTRY OF AGRICULTURE AND FORESTS  
ROYAL GOVERNMENT OF BHUTAN  
TRASHICHHODZONG : THIMPHU

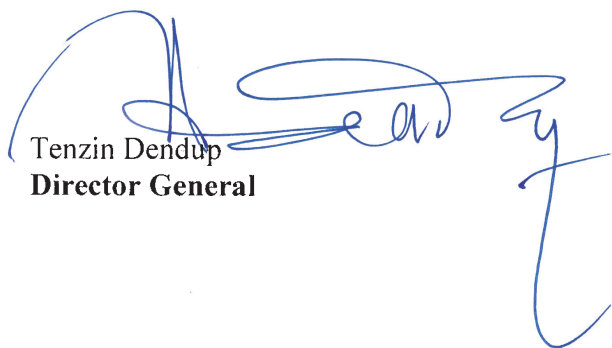


## FOREWORD

The Department of Agriculture is pleased to publish the Annual Agriculture Statistics for the year 2012. It contains data on the agriculture area, yield, production and utilization. There are two sections in this publication: section I deals with the data aggregated at the national level and section II with data at the Dzongkhag level.

We hope that the data in this publication will be useful for planners, policy makers, researchers, extension personals, academicians and those who are involved in the development of agriculture sector. The collection, compilation, processing and analysis of data were carried out by Agriculture Extension and Information Management section, Department of Agriculture. We do not claim that the data are as accurate as they should be rather they are estimated values using some appropriate statistical tools from the sample drawn. The Department of Agriculture would like to acknowledge the support and cooperation received from Dzongkhag Administrations, National Statistics Bureau and other agencies in bringing out this publication.

Let me also take this opportunity to congratulate my colleagues in the Department of Agriculture and Information Management section who worked hard to bring out this publication.



Tenzin Dendup  
**Director General**





## **A. Methodology**

### **1) Sampling frame**

The Household listing is done by the geog agriculture extension officers. The geog agriculture extension officers annually submit the updated Household listings to the Dzongkhags. Then the Dzongkhag validates and submits complied HHs lists to the Department. We are using list frame (House hold list frame) and there are four categories as mention below:

- 1) Land and house.**
- 2) Only land.**
- 3) Only census.**
- 4) Only house.**

In current practice we select category “1” and “2”.

### **2) Questionnaire design**

The survey questionnaire used for the Agriculture Survey 2012 was the revised version of the Agriculture Survey 2011. The revision was done by the Agriculture Extension and Information Management Section (AEIMS) of the Department of Agriculture (DoA) in consultation with the division heads and representatives of all the twenty Dzongkhags. The main purpose of the revision of questionnaire was to do away with some of the unwanted data variables in the previous questionnaire, to include that information which was felt necessary for the implementation of 11<sup>th</sup> five year plan and also to meet the demand of information with time.

### **3) Sample size**

Given that the geographical distribution of crops is based on the different ecological and climatic conditions, it is not feasible to produce precise survey results for all crops in each geog/sub districts. Since the agriculture has many indicators to be estimated like annual crop production estimates, yield estimates, agriculture engaged area estimates and fruit trees estimates etc... Which depends on so many variables both natural and non natural, it was really difficult to come up with a rigid sample size which give us a precise unbiased efficient estimates.

Therefore based on the experience gained from the past year surveys, for the agriculture survey 2012, the sample sizes ranging from 10 percent to 50 percent have been adopted depending on the size of the geogs/sub districts. At least 115 (56.1) geogs accounted for 10 sample, 39 (19.0) geogs for 11-14 sample, 26 (12.7) geogs for 15-20 sample, 15 (7.3) geogs for 21-30 sample and 10 (4.9) geogs for the sample sizes

greater than 30 sample. The average sample size or the households selected for the survey at the national level stands at 12 percent of the total rural households of the country.

#### **4) Sample design**

A linear Systematic sampling was used to select the sample at the geog/sub districts level.

The farming households in the geog were taken as the ultimate sampling units from which the samples were selected using linear systematic sampling.

#### **5) Data Collection**

The data collection was carried out during March-June 2013 and as usual, by agriculture extension officials (EAs) posted in the gewogs under the supervision of Dzongkhag agriculture sector heads. Twenty assistant Dzongkhags agriculture officers (ADAOs) were briefed on the use of the questionnaire and methods of data collection, who in turn trained the field agriculture staff on the use of the questionnaire for data collection.

#### **6) Data Entry**

The data entry into the database developed by the AEIMS (Department of Agriculture) was executed by Assistant Dzongkhag Agriculture Officers (ADAO) from 20 Dzongkhags at a private IT institute in Thimphu in Nov 2013. The data entry works was closely monitored by the AEIMS.

#### **7) Data Processing and Analysis**

The data Processing and analysis was done by the AEIMS of the Department of Agriculture. A month long thorough cleaning of data was done by the AEIMS officials before it was analysed in the SPSS version 20.

#### **8) Estimation Procedures**

The weight estimation procedure was used to represent the estimates of population from the sample survey. Therefore it is necessary to multiply the data by a sampling weight, or expansion factor. The basic weight for each sample household would be equal to the inverse of its probability of selection. The sample design for the agriculture survey 2012 was a self-weighting within stratum, meaning that all the sampled or the enumerated households within a geog will have the same weight.

***Adjustment for non-response/ Non response Weight***

In order to adjust for the loss of representativeness caused by non-responding households, the weight of the responding units ( $Wt\_Eh$ ) was increased by deploying the following formulae. It is the reciprocal/inverse of the percentage responding units from the sample.

$$Non\ response\ Weight / Wnr = \frac{1}{Eh / Sh} \quad \longrightarrow \quad \frac{Sh}{Eh}$$

Where:  $Sh$  = Sampled households in the geog  
 $Eh$  = Enumerated households in the geog

***Design Weight / Weighting for probability of sample selection***

The design weight or base weight is the inverse of probability of selection of the sample.

$$Design\ weight/Base\ weight/ Wd = K \quad \longrightarrow \quad \frac{Nh}{Sh}$$

Based on the one-stage stratified linear systematic sample design, the probability of selection for the sample households in a geog was calculated as follows:

Where:  $Nh$  = Total households in the geog  
 $Sh$  = Sampled households in the geog

Therefore the final weight becomes /  $FW = Wd \times Wnr$   
 (Or)

**The Final WEIGHT = Design Weight × Non response Weight**

Finally, the estimation for observed values in the gewogs has been obtained by multiplying each sample data with the final weight (FW) calculated for the each gewogs.

Therefore, the estimate of a *total value* (such as total production) is the product of

the final weight, FW and the value,  $y_i$ , for each responding unit, summed over all responding units:

$$Y = \sum_{i=1}^n FW \times y_i$$

## **B. Survey Coverage and Scope**

From the total rural households (list gathered from geog extension centres) of 64,283, at least 7,509 (12 on average) were selected for enumeration. The coverage however, was 6,347 (85) of the total sampled households of 7,509. The non-response or the absentees stood at 15.47 percent (1162) of the households selected for the survey.

The Dzongkhags like Samtse, Trongsa and Gasa accounted non response between 1-9, then Mongar, Punakha, Wandue, Bumthang , Paro, Thimphu and Lhuntse accounted non response between 10 to 15, and Dzongkhags like Haa, Zhemgang, Dagana, Trashiyangtse, Tsirang, Chhukha and Sarpang between 16 to 20. The highest non response between 21 to 27 was seen in Trashigang, Pemagatshel and Samdrup Jongkhar Dzongkhags.

# **Part 1**

**National level Statistics**



## C. SUMMARY FINDINGS

Following are the estimated Summary statistics based on the data collected from 6,347 sample farming households interviewed from March to June 2013. The weight estimation method is used to estimate population parameters from sampled data.

Table 1: Coverage of rural households by the survey 2012

Dzongkhag	Total HH (Sample frame)/Nh	Sampled HH / Sh	Percent Sampled	Enumerated HH/ (Eh)	Percent Coverage
Bumthang	1,364	146	11	130	89
Chhukha	3,369	435	13	351	81
Dagana	3,881	463	12	384	83
Gasa	542	120	22	109	91
Haa	1,461	185	13	154	83
Lhuntse	2,360	268	11	228	85
Mongar	5,290	576	11	520	90
Paro	3,237	372	11	331	89
Pemagatshel	4,271	453	11	331	73
Punakha	2,121	336	16	301	90
S/Jongkhar	4,066	445	11	324	73
Samtse	6,114	644	11	632	98
Sarpang	4,504	482	11	384	80
Thimphu	919	214	23	189	88
Trashigang	3,286	334	10	277	83
Trashigang	7,631	773	10	604	78
Trongsa	1,657	200	12	187	94
Tsirang	3,251	366	11	303	83
Wangdue	2,860	447	16	400	89
Zhemgang	2,099	250	12	208	83
<b>Bhutan</b>	<b>64,283</b>	<b>7,509</b>	<b>12</b>	<b>6,347</b>	<b>85</b>

## 1) Demographic Characteristics

Table 1.1: Farming Households Population 2012

Dzongkhag	Avg responding age	Responding Sex in %		0-6 Yrs		6-14Yrs		14-64Yrs		Above 64Yrs	
		Male	Female	Male	Female	Male	Female	Male	Female	Male	Female
Bumthang	50	23.4	76.6	384	387	426	447	1,359	2,028	252	501
Chhukha	47	64.7	35.3	832	713	1,260	1,186	5,233	5,236	534	668
Dagana	47	0	0	966	1,059	1,282	1,184	6,138	6,172	684	669
Gasa	52	43.3	56.7	144	58	362	269	831	868	118	162
Haa	49	53.3	46.7	435	348	674	530	1,891	1,946	375	300
Lhuentse	50	43.0	57.0	1,066	660	1,103	965	2,966	3,583	746	712
Monggar	44	39.4	60.6	1,322	1,070	1,734	1,818	6,899	7,707	925	808
Paro	49	43.5	56.5	709	760	1,482	1,769	4,347	5,670	681	799
Pemagatshel	50	59.8	40.2	437	452	1,375	1,210	4,434	5,269	1,018	793
Punakha	51	41.0	59.0	799	550	997	1,338	3,448	3,751	609	557
S/Jongkhar	47	70.5	29.5	1,062	726	1,599	1,493	5,601	5,782	1,081	543
Samtse	49	79.5	20.5	1,282	1,039	3,537	3,132	10,975	10,393	1,420	894
Sarpang	47	66.4	33.6	1,013	922	1,616	1,690	6,670	6,989	804	990
Thimphu	45	34.9	65.1	237	158	510	634	1,190	1,418	204	122
Trashigang	49	59.5	40.5	1,266	821	2,995	3,085	10,695	11,677	1,670	1,708
T/yangtse	45	44.8	55.2	629	702	1,259	1,175	3,556	4,050	399	339
Trongsa	50	24.2	75.8	165	197	590	458	2,214	2,572	211	352
Tsirang	49	74.3	25.7	699	547	1,646	1,444	5,560	5,734	729	448
Wangdue	48	45.1	54.9	725	502	1,320	1,020	3,625	4,466	597	669
Zhemgang	48	52.7	47.3	816	621	1,327	930	3,385	3,786	570	492
<b>BHUTAN</b>	<b>48</b>	<b>55.9</b>	<b>44.1</b>	<b>14,988</b>	<b>12,292</b>	<b>27,094</b>	<b>25,777</b>	<b>91,017</b>	<b>99,097</b>	<b>13,627</b>	<b>12,526</b>



Figure 1: Population Pyramid by sex, 2012.

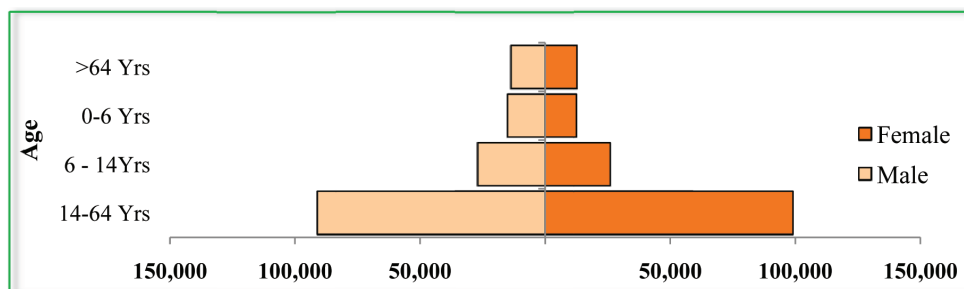


Table 1.2: Dzongkhag wise estimated total population residing on farm by sex in 2012.

Dzongkhag	Male total	Female total	Population total
Bumthang	2,421	3,363	5,784
Chhukha	7,859	7,803	15,662
Dagana	9,070	9,084	18,154
Gasa	1,455	1,357	2,812
Haa	3,375	3,124	6,499
Lhuentse	5,881	5,920	11,801
Monggar	10,880	11,403	22,283
Paro	7,219	8,998	16,217
Pemagatshel	7,264	7,724	14,988
Punakha	5,853	6,196	12,049
S/Jongkhar	9,343	8,544	17,887
Samtse	17,214	15,458	32,672
Sarpang	10,103	10,591	20,694
Thimphu	2,141	2,332	4,473
Trashigang	16,626	17,291	33,917
Trashiyangtse	5,843	6,266	12,109
Trongsa	3,180	3,579	6,759
Tsirang	8,634	8,173	16,807
Wangdue	6,267	6,657	12,924
Zhemgang	6,098	5,829	11,927
<b>BHUTAN</b>	<b>1,46,726</b>	<b>1,49,692</b>	<b>2,96,418</b>

Figure2: Bhutan's total population residing on the farm by sex, 2012.

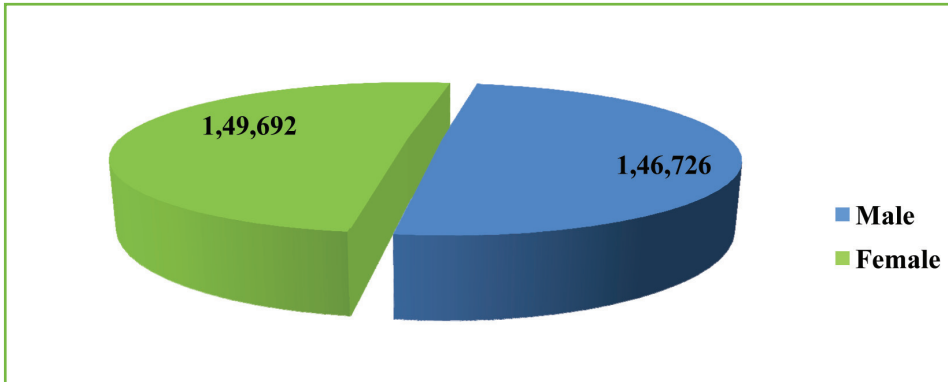
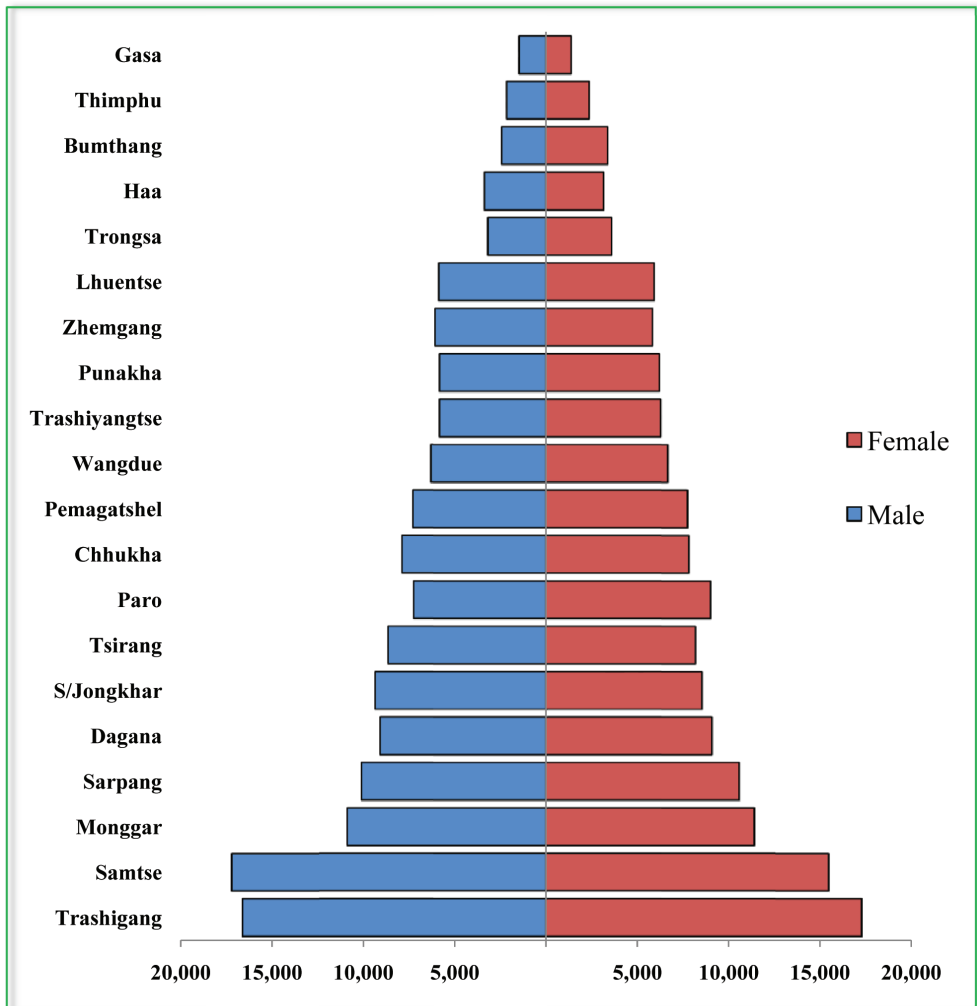


Figure3: Dzongkhag wise Population Pyramid by sex, 2012.



Dzongkhag wise total dry land and wet land in acres as per Land cover mapping 2010

Dzongkhag	Chhuzhing/ Wet land	Kamzhing/ dry land
Bumthang	61.07	7,126.21
Pemagatshel	204.10	14,173.15
Haa	218.72	11,337.72
Gasa	354.83	954.51
Mongar	1,078.97	5,111.54
Thimphu	1,132.17	10,695.92
Zhemgang	1,580.41	13,096.36
Trashiyangtse	2,344.71	8,786.74
Trongsa	2,673.64	11,952.93
Samdrup Jongkhar	2,837.02	647.20
Trashigang	3,558.99	16,636.86
Dagana	3,691.04	20,144.43
Tsirang	3,773.72	8,839.17
Lhuentse	3,893.41	2,257.95
Chhukha	3,920.77	12,311.17
Paro	4,348.82	5,219.65
Sarpang	5,318.19	2,977.45
Wangdue	9,917.54	7,085.65
Punakha	12,536.32	4,768.86
Samtse	14,049.17	8,033.04
<b>BHUTAN</b>	<b>77,493.60</b>	<b>1,72,156.52</b>

## 2) Land Utilization 2012

### a. Wet land

**Note: Operational land holdings= Chhuzhing own land cultivated + Chhuzhing fallow + Chhuzhing leased in.**

In year 2012 of the total estimated 57,993.65 acres operational Chhuzhing land holdings 8,182.58 acres were left fallow.

Dzongkhag	Chhuzhing own land cultivated	Chhuzhing fallow	Chhuzhing Leased out	Chhuzhing Leased in	Operational land holdings
Bumthang	77.09	82.56	33.60	13.50	173.15
Chhukha	1875.73	338.75	33.35	11.96	2226.44
Dagana	3735.88	602.63	395.22	127.65	4466.16
Gasa	188.52	2.80			191.32
Haa	146.90	8.00			154.90
Lhuentse	3823.21	66.20	47.70	4.00	3893.41
Monggar	2014.00	696.51	50.29	10.80	2721.31
Paro	3429.38	103.04	591.12	521.05	4053.47
Pemagatshel	213.01	64.96			277.97
Punakha	3958.21	676.41	367.87	1136.85	5771.47
S/Jongkhar	2348.96	474.07	275.13	119.00	2942.03
Samtse	6916.72	1025.38	312.56	261.90	8204.00
Sarpang	5054.09	1504.44	322.71	385.10	6943.63
Thimphu	1059.91	53.76	3.74	18.50	1132.17
Trashigang	2614.60	335.61	95.03	171.65	3121.86
Trashiyangtse	1799.3	337.82	119.90	207.59	2344.71
Trongsa	1220.98	404.53	64.02	113.38	1738.89
Tsirang	3271.49	598.73	183.00	261.51	4131.73
Wangdue	3898.39	492.45	360.10	309.20	4700.04
Zhemgang	1298.22	313.93	24.00	19.00	1631.15
<b>BHUTAN</b>	<b>48,944.59</b>	<b>8,182.58</b>	<b>3,279.34</b>	<b>3,692.64</b>	<b>60,819.81</b>

## b. Dry Land

**Note: Operational land holdings= Kamzhing own land cultivated + Kamzhing fallow + Kamzhing leased in.**

In year 2012 of the total estimated 1, 43,936.88 acres operational Kamzhing land holdings 44,166.36acres were left fellow.

Dzongkhag	Kamzhing own land Cultivated	Kamzhing fallow	Kamzhing Leased Out	Kamzhing Leased in	Operational land holdings
Bumthang	3070.32	3959.73	233.85	156.00	7186.05
Chhukha	6971.68	2026.16	59.20	206.82	9204.66
Dagana	9669.95	1582.67	628.65	241.50	11494.12
Gasa	297.93	4.58			302.51
Haa	3000.33	721.35	26.09	28.00	3749.68
Lhuentse	3228.85	2817.78	44.00	5.44	6052.07
Monggar	8866.04	4955.57	224.95	80.44	13902.05
Paro	3128.31	808.25	72.83	16.80	3953.36
Pemagatshel	5075.52	3667.67	199.94	196.60	8939.79
Punakha	1680.13	230.29	3.25	20.15	1930.57
S/Jongkhar	6570.02	8434.88	350.15	66.45	15071.35
Samtse	11116.52	1722.43	375.60	145.60	12984.55
Sarpang	7200.66	1771.78	112.80	147.00	9119.44
Thimphu	937.37	135.00	10.50	13.00	1085.37
Trashigang	6793.69	5011.79	125.26	112.19	11917.67
Trashiyangtse	2413.90	1642.28	33.70	91.93	4148.11
Trongsa	1975.75	1155.12	60.96	18.87	3149.74
Tsirang	6628.80	920.83	115.50	24.00	7573.63
Wangdue	2592.45	433.52	67.92	32.05	3058.01
Zhemgang	6916.46	2164.69	44.80	33.00	9114.15
<b>BHUTAN</b>	<b>98,134.67</b>	<b>44,166.36</b>	<b>2,789.95</b>	<b>1,635.84</b>	<b>1,43,936.88</b>

### 3) Crop Production

**Table 3.1: Cereal, Legumes& Pulses, Oilseeds, Roots /Tubers, Spices, Cucurbits and Vegetable production in 2012**

Crop Type	Crop Name	Cultivated Area(Acres)	Quantity Produced(MT)	Yield(Kg/Acre)
Cereal	Barley	3,273	2,356	720
	Buckwheat	6,851	4,303	628
	Maize	63,488	73,024	1,150
	Millet	6,462	3,965	614
	Paddy	52,252	78,014	1,493
	Wheat	5,540	5,038	909
Legumes & pulses	Ground nut	177	145	817
	Lentil	60	19	315
	Mung bean	365	165	452
	Rajma bean	1,150	514	447
Oilseeds	Mustard	2,687	790	294
	Niger (Filingi)	4	0.9	250
	Others	2	0.5	200
	Soya bean	979	294	301
	Sunflower	43	15	341
Roots/Tubers	Collocacia	227	233	1,028
	Sweet potato	117	90	764
	Tapioca	421	360	856
	yam	50	34	682
Spices	Cardamom	5,084	643	126
	Coriander	5	2	454
	Dolay Chilli		142	
	Garlic	1,273	644	506
	Ginger	1,985	5,014	2,526
	Onion bulb	493	264	536
Cucurbits	Cucumber		2,382	
	Gourds		151	
	Pumpkin		4,796	
	Squash		1,945	

Crop Type	Crop Name	Cultivated Area(Acres)	Quantity Produced(MT)	Yield(Kg/Acre)
Vegetables	Asparagus	328	149	454
	Beans	2,835	2,479	874
	Broccoli	397	363	915
	Cabbage	2,677	3,413	1,275
	Carrot	421	585	1,389
	Cauliflower	737	829	1,126
	Chilli	7,797	7,726	991
	Cultivated Mushroom		4	
	Egg Plant	336	374	1,110
	Green Leaves	2,152	2,414	1,122
	Lady Finger	28	13	469
	Peas	818	779	952
	Potato	12,548	43,000	3,427
	Radish	2,817	5,245	1,862
	Tomato	293	337	1,150
Turnip	1,697	7,994	4,711	

**Table 3.2: Paddy harvested area, production and yield (2012)**

<b>Dzongkhag</b>	<b>Area(Acres)</b>	<b>Production (MT)</b>	<b>Yield(kg/acre)</b>
<b>Thimphu</b>	1,078	1,833	1,700
<b>Paro</b>	3,950	7,764	1,965
<b>Haa</b>	147	223	1,517
<b>Chhukha</b>	1,888	2,503	1,326
<b>Samtse</b>	7,179	9,844	1,371
<b>Punakha</b>	5,095	9,351	1,835
<b>Gasa</b>	189	285	1,510
<b>Wangdue</b>	4,208	6,641	1,578
<b>Tsirang</b>	3,533	5,191	1,469
<b>Dagana</b>	3,864	5,669	1,467
<b>Bumthang</b>	91	119	1,315
<b>Trongsa</b>	1,334	1,906	1,428
<b>Zhemgang</b>	1,317	1,809	1,373
<b>Sarpang</b>	5,054	6,874	1,360
<b>Lhuntse</b>	3,827	5,066	1,324
<b>Mongar</b>	2,025	2,671	1,319
<b>Trashigang</b>	2,786	3,851	1,382
<b>Trashiyangtse</b>	2,007	2,484	1,238
<b>Pemagatshel</b>	213	255	1,195
<b>S/Jongkhar</b>	2,468	3,677	1,490
<b>BHUTAN</b>	<b>52,252</b>	<b>78,014</b>	<b>1,493</b>



**Table 3.3: Maize harvested area, production and yield (2012)**

<b>Dzongkhag</b>	<b>Area(Acres)</b>	<b>Production(MT)</b>	<b>Yield (kg/acre)</b>
<b>Chhukha</b>	3,121	2,329	746
<b>Dagana</b>	6,556	6,870	1,048
<b>Gasa</b>	3	4	1,152
<b>Haa</b>	416	347	835
<b>Lhuentse</b>	2,335	3,228	1,382
<b>Monggar</b>	8,481	10,420	1,229
<b>Paro</b>	54	46	850
<b>Pemagatshel</b>	5,076	5,903	1,163
<b>Punakha</b>	372	208	560
<b>S/Jongkhar</b>	4,712	6,361	1,350
<b>Samtse</b>	6,673	6,393	958
<b>Sarpang</b>	6,587	6,890	1,046
<b>Thimphu</b>	2	4	2,171
<b>Trashigang</b>	5,806	9,113	1,570
<b>Trashiyangtse</b>	1,619	2,325	1,436
<b>Trongsa</b>	956	990	1,036
<b>Tsirang</b>	5,416	5,745	1,061
<b>Wangdue</b>	369	430	1,167
<b>Zhemgang</b>	4,936	5,419	1,098
<b>BHUTAN</b>	<b>63,488</b>	<b>73,024</b>	<b>1,150</b>

**Table 3.4: Wheat harvested area, production and yield (2012)**

<b>Dzongkhag</b>	<b>Area(Acres)</b>	<b>Production(MT)</b>	<b>Yield(Kg/Acre)</b>
Bumthang	382	366	960
Chhukha	314	236	750
Dagana	67	57	850
Gasa	45	48	1,060
Haa	938	1,004	1,070
Lhuentse	67	43	645
Monggar	133	104	783
Paro	645	665	1,031
Pemagatshel	102	96	940
Punakha	405	439	1,084
S/Jongkhar	39	29	736
Samtse	254	198	780
Sarpang	13	7	557
Thimphu	151	165	1,091
Trashigang	146	121	831
Trashiyangtse	18	15	830
Trongsa	348	252	724
Tsirang	92	58	634
Wangdue	1,057	939	888
Zhemgang	323	196	606
<b>BHUTAN</b>	<b>5,540</b>	<b>5,038</b>	<b>909</b>

**Table 3.5: Buckwheat harvested area, production and yield(2012)**

<b>Dzongkhag</b>	<b>Area(Acres)</b>	<b>Production(MT)</b>	<b>Yield (kg/acre)</b>
Bumthang	657	407	620
Chhukha	647	344	531
Dagana	566	361	638
Haa	540	373	690
Monggar	372	208	560
Paro	209	89	428
Pemagatshel	307	200	650
Punakha	81	56	695
S/Jongkhar	1,077	827	768
Samtse	183	125	684
Sarpang	211	113	538
Trashigang	530	323	609
Trashiyangtse	36	26	717
Trongsa	445	230	517
Tsirang	168	122	727
Wangdue	424	234	551
Zhemgang	400	266	664
<b>BHUTAN</b>	<b>6,851</b>	<b>4,303</b>	<b>628</b>

**Table 3.6: Barley harvested area, production and yield(2012)**

<b>Dzongkhag</b>	<b>Area(Acres)</b>	<b>Production (MT)</b>	<b>Yield (Kg/acre)</b>
<b>Bumthang</b>	315	205	650
<b>Chhukha</b>	72	46	645
<b>Dagana</b>	95	79	830
<b>Gasa</b>	265	195	734
<b>Haa</b>	78	62	792
<b>Monggar</b>	940	611	650
<b>Paro</b>	48	48	993
<b>Pemagatshel</b>	56	35	627
<b>Punakha</b>	52	51	964
<b>S/Jongkhar</b>	298	221	742
<b>Samtse</b>	66	44	668
<b>Sarpang</b>	4	3	798
<b>Thimphu</b>	16	11	703
<b>Trashigang</b>	203	156	771
<b>Trashiyangtse</b>	2	2	920
<b>Trongsa</b>	317	248	782
<b>Tsirang</b>	34	33	975
<b>Wangdue</b>	350	268	766
<b>Zhemgang</b>	63	39	620
<b>BHUTAN</b>	<b>3,273</b>	<b>2,356</b>	<b>720</b>

**Table 3.7: Millet harvested area, production and yield (2012)**

<b>Dzongkhag</b>	<b>Area(Acres)</b>	<b>Production(MT)</b>	<b>Yield (kg/acre)</b>
Chhukha	911.1	592.2	650
Dagana	670.8	554.0	826
Haa	98.5	82.7	840
Lhuentse	75.4	65.7	872
Monggar	28.3	17.6	620
Paro	0.2	0.1	500
Pemagatshel	223.3	160.8	720
Punakha	1.3	0.8	670
S/Jongkhar	296.2	151.0	510
Samtse	1,578.4	978.6	620
Sarpang	1,059.2	525.4	496
Trashigang	108.3	90.4	835
Trashiyangtse	235.8	206.5	876
Trongsa	95.3	71.5	750
Tsirang	769.8	337.8	439
Wangdue	7.8	5.2	671
Zhemgang	302.5	124.6	412
<b>BHUTAN</b>	<b>6,462.1</b>	<b>3,965.1</b>	<b>613.6</b>

**Table 3.8: Potato harvested area, production and yield (2012)**

<b>Dzongkhag</b>	<b>Area(Acres)</b>	<b>Production(MT)</b>	<b>Yield(kg/acre)</b>
Bumthang	773	3,608	4,667
Chhukha	1,235	4,162	3,370
Dagana	218	217	992
Gasa	92	225	2,449
Haa	672	2,639	3,929
Lhuentse	304	891	2,933
Monggar	1,638	3,516	2,147
Paro	805	3,649	4,532
Pemagatshel	599	1,947	3,250
Punakha	44	87	1,985
S/Jongkhar	684	1,437	2,100
Samtse	93	119	1,290
Sarpang	97	77	800
Thimphu	336	1,425	4,243
Trashigang	2,256	8,331	3,693
Trashiyangtse	421	1,593	3,787
Trongsa	197	670	3,403
Tsirang	283	320	1,131
Wangdue	1,600	7,822	4,890
Zhemgang	203	265	1,305
<b>BHUTAN</b>	<b>12,548</b>	<b>43,000</b>	<b>3,427</b>

**Table 3.9: Chilli harvested area, production and yield (2012)**

<b>Dzongkhag</b>	<b>Area(Acres)</b>	<b>Production(MT)</b>	<b>Yield (kg/acre)</b>
Bumthang	52	42	812
Chhukha	525	387	738
Dagana	207	81	392
Gasa	31	23	730
Haa	125	33	261
Lhuentse	597	443	741
Monggar	679	470	693
Paro	651	1,429	2,194
Pemagatshel	386	181	468
Punakha	395	788	1,995
S/Jongkhar	403	302	750
Samtse	156	68	438
Sarpang	194	89	462
Thimphu	286	493	1,723
Trashigang	1,024	741	724
Trashiyangtse	761	580	762
Trongsa	301	255	846
Tsirang	196	123	627
Wangdue	398	848	2,132
Zhemgang	430	348	810
<b>BHUTAN</b>	<b>7,797</b>	<b>7,726</b>	<b>991</b>

**Table 3.10: Cabbage harvested area, production and yield (2012)**

<b>Dzongkhag</b>	<b>Area(Acres)</b>	<b>Production(MT)</b>	<b>Yield (Kg/acre)</b>
Bumthang	55	82	1,487
Chhukha	128	247	1,929
Dagana	76	75	993
Gasa	10	10	1,002
Haa	47	59	1,264
Lhuentse	196	124	632
Monggar	274	257	940
Paro	386	914	2,369
Pemagatshel	131	141	1,082
Punakha	28	50	1,784
S/Jongkhar	73	62	850
Samtse	136	138	1,010
Sarpang	47	68	1,437
Thimphu	65	105	1,628
Trashigang	292	337	1,152
Trashiyangtse	164	170	1,041
Trongsa	51	64	1,265
Tsirang	169	257	1,523
Wangdue	169	137	810
Zhemgang	181	115	637
<b>BHUTAN</b>	<b>2,677</b>	<b>3,413</b>	<b>1,275</b>



**Table 3.11: Other vegetables production (MT) for 2012**

<b>Dzongkhag</b>	<b>Asparagus</b>	<b>Beans</b>	<b>Broccoli</b>	<b>Carrot</b>	<b>Cauliflower</b>	<b>Cultivated Mushroom</b>
Bumthang	0.1	16.2	6.8	29.7	31.1	0
Chhukha	1.1	231.9	20.9	125.3	36.8	0
Dagana	0.3	74.0	7.9	3.8	22.7	0
Gasa	2.2	10.7	1.0	8.7	0.2	0
Haa	0.4	12.8	2.8	13.7	9.8	0
Lhuentse	0.3	62.8	11.6	10.9	31.2	0
Monggar	5.0	207.9	46.0	28.9	89.8	0
Paro	72.1	160.3	11.0	120.0	6.8	1.1
P/gatshel	1.3	75.1	12.6	5.3	57.4	0
Punakha	3.3	194.9	14.2	33.5	4.9	0
S/Jongkhar	1.2	120.1	18.3	7.8	28.7	0
Samtse	0.0	168.3	54.6	5.6	31.5	0.1
Sarpang	0.9	289.0	14.4	7.6	17.6	0
Thimphu	22.1	47.5	13.4	29.0	100.7	0
Trashigang	11.1	188.2	21.6	45.7	138.5	0
T/yangtse	15.2	53.7	3.4	13.2	73.4	0
Trongsa	0.3	66.5	34.1	34.8	33.7	0
Tsirang	6.2	184.0	33.6	8.2	33.7	0
Wangdue	6.1	130.0	21.3	47.0	41.5	0
Zhemgang	0.0	185.4	13.4	6.7	39.2	2.8
<b>BHUTAN</b>	<b>149</b>	<b>2,479</b>	<b>363</b>	<b>585</b>	<b>829</b>	<b>4</b>

Dzongkhag	Egg Plant	Green Leaves	Lady Finger	Peas	Radish	Tomato	Turnip
Bumthang	0.2	28.3	0	4.6	142.6	0.5	286.3
Chhukha	10.2	292.6	0.4	125.7	402.7	21.7	974.3
Dagana	8.2	195.3	0.7	4.3	153.7	17.3	21.8
Gasa	0	10.5	0	1.8	16.9	0	12.0
Haa	0.1	27.0	0	115.5	93.6	0.1	3167.4
Lhuentse	18.1	31.2	0	10.3	143.3	5.2	0
Monggar	12.5	136.9	0	59.2	589.3	1.2	9.9
Paro	29.1	35.9	0	201.5	240.4	75.7	457.1
P/gatshel	16.3	52.0	0	9.6	442.4	4.0	5.9
Punakha	45.8	156.6	0.3	51.7	211.7	33.3	46.4
S/Jongkhar	10.0	157.8	0.1	19.6	287.5	7.1	0
Samtse	23.6	379.0	3.4	21.5	155.0	14.8	2.2
Sarpang	19.2	195.0	1.4	10.3	147.6	71.5	2.2
Thimphu	3.2	58.0	0	21.2	219.0	0.5	162.0
Trashigang	22.0	188.8	0.2	53.1	515.4	11.1	10.2
T/yangtse	8.1	27.0	0	16.9	136.2	20.5	23.4
Trongsa	45.9	65.6	0.9	16.1	279.9	5.0	235.4
Tsirang	9.9	217.2	0.9	17.3	165.6	11.0	8.8
Wangdue	57.7	75.9	2.4	12.0	716.2	23.0	2563.9
Zhemgang	33.3	83.3	2.6	6.7	185.6	13.8	4.3
<b>BHUTAN</b>	<b>374</b>	<b>2,414</b>	<b>13</b>	<b>779</b>	<b>5,245</b>	<b>337</b>	<b>7,994</b>

Table 3.12: Spices production (MT) for 2012

Dzongkhag	Cardamom	Cori- ander	Dolay Chilli	Garlic	Ginger	Onion bulb
Bumthang				8.5		0.1
Chhukha	183.2		10.9	8.6	1335.9	9.2
Dagana	29.0		17.4	13.4	33.1	12.3
Gasa				7.6	0.2	
Haa	29.8		1.6	7.4	0.9	1.0
Lhuentse				39.7	4.0	0.5
Monggar			13.2	88.8	10.7	21.1
Paro				5.0	0.1	3.0
Pemagatshel	23.9		3.8	27.6	89.6	8.3
Punakha				16.0	1.2	19.2
S/Jongkhar	3.3		2.8	43.1	589.0	16.1
Samtse	305.4		12.7	33.5	2090.1	4.0
Sarpang	61.8		15.7	16.3	652.0	25.7
Thimphu				1.9		1.2
Trashigang	1.1		5.9	167.7	15.7	68.9
Trashiyangtse			1.5	61.1	28.3	10.8
Trongsa	0.7		0.8	17.8	7.8	6.7
Tsirang	4.6		42.6	11.3	107.7	14.0
Wangdue		1.9	0.9	44.9	17.3	30.8
Zhemgang	0.3	0.2	12.4	24.3	30.1	11.5
<b>BHUTAN</b>	<b>643</b>	<b>2</b>	<b>142</b>	<b>644</b>	<b>5,014</b>	<b>264</b>

Table 3.13: Oil seeds production (MT) for 2012

Dzongkhag	Mustard	Perilla (Naam)	Soya bean	Sunflower
Bumthang	15	0	0	10
Chhukha	66	6	2	0
Dagana	46	0	13	0
Gasa	0	0	0	0
Haa	24	5	1	0
Lhuentse	28	0	3	0
Monggar	10	0	34	1
Paro	18	0	0	0
Pemagatshel	13	1	21	0
Punakha	18	0	1	0
S/Jongkhar	75	3	28	0
Samtse	65	0	5	0
Sarpang	119	0	2	1
Thimphu	7	0	0	0
Trashigang	153	1	134	1
Trashiyangtse	13	0	37	0
Trongsa	13	1	1	0
Tsirang	52	1	6	1
Wangdue	39	0	0	0
Zhemgang	15	3	4	0
<b>BHUTAN</b>	<b>790</b>	<b>21</b>	<b>294</b>	<b>15</b>

Table 3.14: Cucurbits production (MT) for 2012

Dzongkhag	Cucumber	Gourds	Pumpkin	Squash
Bumthang	5		6	
Chhukha	106	22	282	375
Dagana	143	9	454	240
Gasa	1			
Haa	24	11	115	42
Lhuentse	96	1	104	44
Monggar	181	1	348	3
Paro	108		131	1
Pemagatshel	104	3	466	114
Punakha	268	2	63	83
S/Jongkhar	348	19	571	127
Samtse	76	6	210	271
Sarpang	83	21	377	169
Thimphu	5		6	
Trashigang	339	16	741	53
Trashiyangtse	167	0	372	11
Trongsa	40	1	60	22
Tsirang	109	17	247	364
Wangdue	109	15	121	18
Zhemgang	69	6	121	10
<b>BHUTAN</b>	<b>2,382</b>	<b>151</b>	<b>4,795</b>	<b>1,945</b>

#### 4) Fruit production

Table 4.1: Horticulture fruit crop production in 2012

Commodities	Total trees	Bearing trees	Qty produced(MT)	Yield(Kg/bearing tree)
Apple	306,181	243,967	7,666.14	31.42
Apricot	105	105	5.25	50
Areca Nut	1,128,434	673,464	7,788.40	11.56
Avocado	164	40	6.52	163
Banana			1,546.62	
Cherry	18	18	0.14	7.5
Coconut	45	15	1.50	100
Guava	36,704	24,406	731.69	29.98
Jack fruit	5,900	2,923	296.27	101.36
Litchi	15,579	3,719	159.20	42.81
Mandarin	2,076,369	1,104,891	49,500.77	44.8
Mango	37,506	12,845	742.69	57.82
Papaya	5,511	3,863	119.31	30.89
Passion fruit			140.88	
Peach	45,145	31,780	1,614.46	50.8
Pear	39,798	19,810	2,165.89	109.33
Persimmon	6,149	3,639	203.81	56.01
Pine Apple			53.29	
Plum	17,092	10,910	695.45	63.74
Pomegranate	6,360	3,807	84.09	22.09
Sugarcane			225.50	
Tree tomato	40,237	31,390	369.83	11.78
Walnut	41,479	13,175	414.15	31.43

**Table 4.2: Apple production and yield in 2012**

<b>Dzongkhag</b>	<b>Total Trees</b>	<b>Bearing Trees</b>	<b>Production (MT)</b>	<b>Yield (Kg/bearing tree)</b>
Bumthang	8,883	8,262	350	42
Chhukha	8,599	5,985	159	26
Dagana	671	470	2	5
Gasa	52	32	1	26
Haa	27,143	21,061	467	22
Lhuentse	1,308	503	9	19
Monggar	4,382	964	24	25
Paro	187,378	154,254	3,753	24
Pemagatshel	253	23	0.3	14
Punakha	300	212	4	20
S/Jongkhar	1,714	926	45	49
Samtse	10			
Sarpang	10	10	0.2	20
Thimphu	51,698	48,061	2,746	57
Trashigang	2,097	692	51	74
Trashiyangtse	7,375	582	18	32
Trongsa	599	277	2	8
Tsirang	173	11	0.16	15
Wangdue	1,876	1,224	13	11
Zhemgang	1,660	418	22	52
<b>BHUTAN</b>	<b>306,181</b>	<b>243,967</b>	<b>7,666</b>	<b>31</b>

**Table 4.3: Mandarin production and yield (2012)**

<b>Dzongkhag</b>	<b>Total Trees</b>	<b>Bearing Trees</b>	<b>Production(MT)</b>	<b>Yield (Kg/bearing trees)</b>
Chhukha	132,152	78,817	1,969	25
Dagana	361,192	189,897	5,368	28
Haa	464	400	12	30
Lhuentse	10,893	3,819	117	31
Monggar	150,620	44,145	2,127	48
Pemagatshel	448,077	257,771	9,981	39
Punakha	30,397	18,326	399	22
S/Jongkhar	197,100	88,750	5,068	57
Samtse	105,691	83,022	2,430	29
Sarpang	173,197	125,291	7,668	61
Trashigang	80,675	17,731	1,318	74
Trashiyangtse	27,553	6,827	197	29
Trongsa	16,374	9,703	415	43
Tsirang	164,437	111,416	9,764	88
Wangdue	10,606	4,057	104	26
Zhemgang	166,941	64,919	2,565	40
<b>BHUTAN</b>	<b>2,076,369</b>	<b>1,104,891</b>	<b>49,501</b>	<b>45</b>



**Table 4.4: Areca Nut production and yield (2012)**

<b>Dzongkhag</b>	<b>Total Trees</b>	<b>Bearing Trees</b>	<b>Production(MT)</b>	<b>Yield (Kg/bearing tree)</b>
<b>Chhukha</b>	43,021	29,031	295	10
<b>Dagana</b>	143,506	67,079	513	8
<b>Monggar</b>	1,276	330	2	6
<b>Pemagatshel</b>	6,550	1,529	18	12
<b>S/Jongkhar</b>	69,226	47,807	579	12
<b>Samtse</b>	281,807	188,439	2,857	15
<b>Sarpang</b>	581,226	338,392	3,513	10
<b>Trashigang</b>	20	10	0	5
<b>Tsirang</b>	99	42	1	14
<b>Zhemgang</b>	1,703	805	10	12
<b>BHUTAN</b>	<b>1,128,434</b>	<b>673,464</b>	<b>7,788</b>	<b>11.6</b>

## 5) Crop Utilization for 2012

### a) Qty retained for seed and animal feeds

Table a.5.1: Qty retained for seeds and animal feeds by Crop Type in MT

Crop Type	Qty retained for seeds[MT]	Qty used for animal feed [MT]
Cereal	3,050	4,208
Cucurbits	41	1,536
Oil seeds	43	34
Pulses	77	26
Roots/tubers	14	26
Spices	1,111	
Vegetables	6,861	6,234

Table a.5.2: Qty retained for seeds and animal feeds by Crop Name in MT

Crop Type	Crop Name	Qty retained for seed[MT]	Qty used for animal feed [MT]
Cereal	Barley	108.30	169.02
	Buckwheat	226.71	220.98
	Maize	1,270.36	3,376.62
	Millet	72.12	43.79
	Paddy	1,157.24	137.51
	Wheat	215.60	260.26
Cucurbits	Cucumber	4.85	184.56
	Gourds	1.21	10.95
	Pumpkin	32.68	946.94
	Squash	1.94	393.09
Oil seeds	Mustard	25.45	31.20
	Niger	0.01	
	Perilla (Naam)	0.47	
	Soya bean	16.22	2.70
	Sunflower	0.37	

<b>Pulses</b>	<b>Dal</b>	9.89	4.15
	<b>Ground nut</b>	7.93	3.98
	<b>Lentil</b>	1.77	
	<b>Mung bean</b>	10.71	6.29
	<b>Rajma bean</b>	46.73	11.49
<b>Roots/tubers</b>	<b>Collocacia</b>	5.76	10.63
	<b>Sweet potato</b>	0.74	3.48
	<b>Tapioca</b>	7.95	12.15
<b>Spices</b>	<b>Cardamom</b>	11.12	
	<b>Coriander</b>	-	
	<b>Dolay Chilli</b>	1.26	
	<b>Garlic</b>	52.04	
	<b>Ginger</b>	1,017.56	
	<b>Onion bulb</b>	29.24	
<b>Vegetables</b>	<b>Asparagus</b>	3.79	
	<b>Beans</b>	36.08	23.42
	<b>Broccoli</b>	0.25	5.07
	<b>Cabbage</b>	1.50	102.58
	<b>Carrot</b>	0.04	35.84
	<b>Cauliflower</b>	0.11	12.08
	<b>Chilli</b>	20.94	1.94
	<b>Egg Plant</b>	0.61	0.19
	<b>Green Leaves</b>	10.53	81.68
	<b>Lady Finger</b>	7.21	1.10
	<b>Peas</b>	21.75	11.88
	<b>Potato</b>	6,727.38	243.45
	<b>Radish</b>	13.09	1,007.66
	<b>Tomato</b>	1.92	7.37
	<b>Turnip</b>	16.04	4,700.13

## b) Qty sold, Unit Price and Amount Earned

Table b.5.1: Qty sold (MT), Unit Price (Nu/kg) and Amt Earned (Mil. Nu) by Crop Type

Crop Type	Qty sold(MT)	Amt Earned (million Nu)	Market type (in %)	
			Domestic	Export
Cereal	2,485	50.57	94.4	5.6
Cucurbits	815	11.58	99.7	0.3
Oil seeds	103	3.38	93.6	6.4
Pulses	413	14.95	86.7	13.3
Roots/tubers	55	1.58	98.2	1.8
Spices	3,774	468.09	84.1	15.9
Vegetables(including potato)	34,259	641.49	92.6	7.4

Table b.5.2: Qty sold (MT), Unit Price (Nu/kg) and Amt Earned (Mil Nu) by Crop Name

Crop Type	Crop Name	Qty sold [MT]	Avg unit price [Nu/Kg]	Amt Earned [Million Nu]	Market Type (in %)	
					Domestic	Export
Cereal	Barley	6	30.59	0.16	83.1	16.9
	Buckwheat	7	26.39	0.16	90.8	9.2
	Maize	1,702	14.53	21.81	92.1	7.9
	Millet	81	18.72	1.39	100	0
	Paddy	649	38.98	25.85	99	1
	Wheat	39	32.67	1.19	100	0
Cucurbits	Cucumber	368	19.67	6.99	99.7	0.3
	Gourds	27	17.93	0.47	100	0
	Pumpkin	269	11.79	2.73	99.6	0.4
	Squash	151	11.91	1.38	100	0
Oil seeds	Mustard	57	25.31	1.44	100	0
	Perilla (Naam)	5	162.64	0.71	100	0
	Soya bean	39	32.68	1.11	89.9	10.1
	Sunflower	2	100	0.11	100	0

<b>Pulses</b>	<b>Dal</b>	59	53.98	3.26	97.8	2.2
	<b>Ground nut</b>	58	31.96	1.81	96.7	3.3
	<b>Lentil</b>	6	50.08	0.31	100	0
	<b>Mung bean</b>	29	48.17	1.22	100	0
	<b>Rajma bean</b>	262	36.75	8.35	72.5	27.5
<b>Roots/ tubers</b>	<b>Collocacia</b>	21	34.28	1.06	100	0
	<b>Sweet potato</b>	2	26.88	0.03	87	13
	<b>Tapioca</b>	32	15.25	0.49	98.6	1.4
<b>Spices</b>	<b>Cardamom</b>	557	646.87	374.48	66	34
	<b>Coriander</b>	1	30	0.02	100	0
	<b>Dolay Chilli</b>	44	118.5	7.12	98.5	1.5
	<b>Garlic</b>	192	85.17	11.65	97.7	2.3
	<b>Ginger</b>	2,807	33.45	69.6	76.9	23.1
	<b>Onion bulb</b>	173	40.89	5.22	98.1	1.9
<b>Vegetables</b>	<b>Asparagus</b>	83	87.02	8.42	98.8	1.2
	<b>Beans</b>	777	29.41	22.78	98.6	1.4
	<b>Broccoli</b>	162	41.05	6.79	99	1
	<b>Cabbage</b>	1,797	17.38	22.59	98	2
	<b>Carrot</b>	356	26.84	10.55	96.7	3.3
	<b>Cauliflower</b>	316	26.83	9.77	96	4
	<b>Chilli</b>	3,202	59.1	133.96	98.1	1.9
	<b>Cultivated Mushroom</b>	7	168.69	1.12	100	0
	<b>Egg Plant</b>	130	22.54	3.04	99.2	0.8
	<b>Green Leaves</b>	625	15.35	8.74	99.7	0.3
	<b>Lady Finger</b>	3	19.4	0.05	100	0
	<b>Peas</b>	373	28.79	9.61	93.9	6.1
	<b>Potato</b>	25,180	15.32	388.00	70.9	29.1
	<b>Radish</b>	896	12.24	12.12	98.3	1.7
	<b>Tomato</b>	133	21.25	2.84	100	0
<b>Turnip</b>	220	17.86	1.12	100	0	

## 6) Fruit Utilization

Table 6.1: Fruit Utilization for 2012

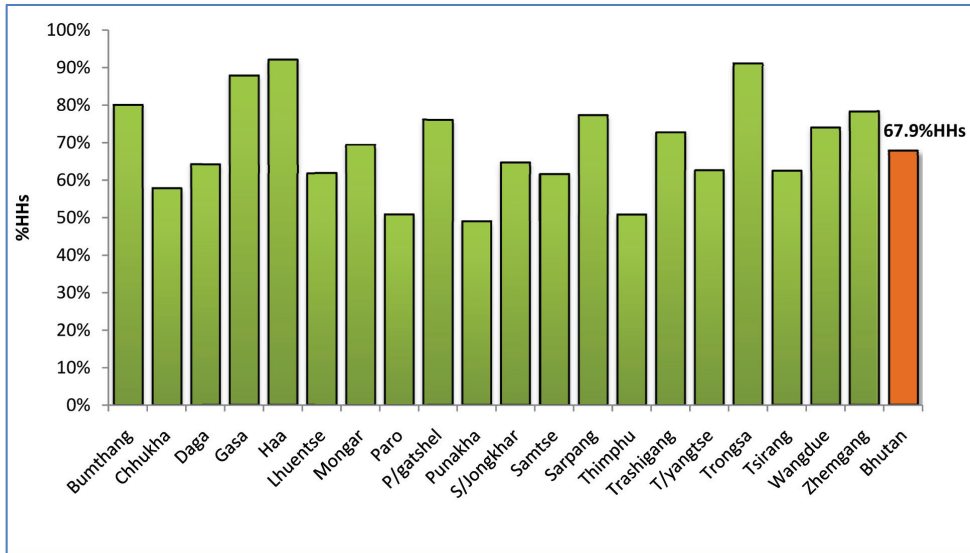
Commodities	Qty used for animal feed[MT]	Qty sold [MT]	Avg unit price [Nu/Kg]	Amt Earned [Million Nu]	Market Type (in %)	
					Domestic	Export
Apple	58.72	4,119	32.93	104.95	65.1	34.9
Apricot		5	70	0.37	100	0
Areca Nut		6,143	14.74	74.24	71.6	28.4
Avocado		5	150	0.72	100	0
Banana	77.64	332	19.79	6.04	97.5	2.5
Coconut		2	40	0.06	100	0
Guava	19.16	115	17.67	2.98	97.5	2.5
Jack Fruit	4	55	14.92	0.62	100	0
Litchi		17	21.47	0.41	95.6	4.4
Mandarin	100.43	33,789	21.28	451.6	69.5	30.5
Mango	8.7	517	30.42	4.17	98.5	1.5
Papaya	0.1	21	15.83	0.3	100	0
Passion fruit	0.02	22	24.96	0.55	96.1	3.9
Peach	78.12	280	22.18	3.85	100	0
Pear	390.68	287	23.78	5.76	99.4	0.6
Persimmon	0.65	49	24.41	1.28	100	0
Pine Apple	0.11	12	23.45	0.28	100	0
Plum	50.81	126	20.78	3.64	100	0
Pomegranate		10	49.73	0.3	100	0
Sugarcane	3.49	22	18.7	0.41	100	0
Tree tomato	0.31	98	28.89	2.06	100	0
Walnut		76	63.41	3.3	100	0

## 7) HH Cash income

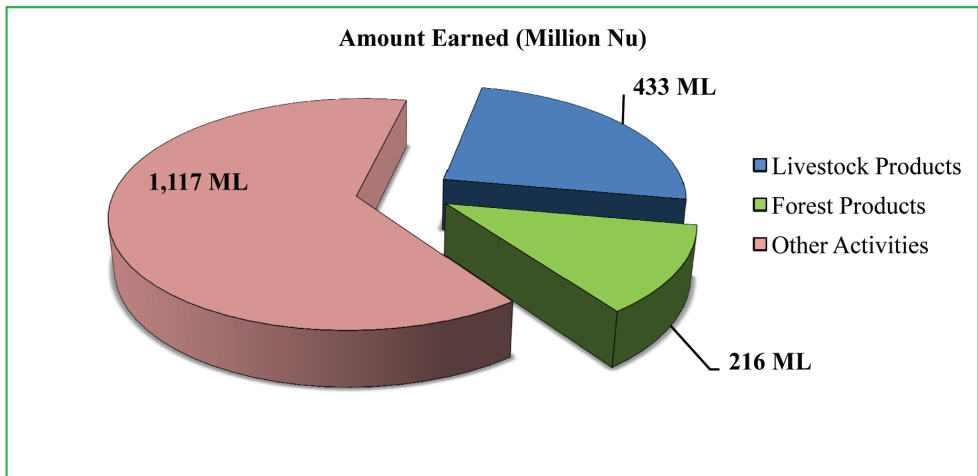
**Table 7.1: Dzongkhag wise proportion of HHs having earned / Not Earned Cash income from livestock, forest products and other activities**

Dzongkhag	Earned	Not Earned
Bumthang	80	20
Chhukha	58	42
Dagana	64	36
Gasa	88	12
Haa	92	8
Lhuentse	62	38
Monggar	69	31
Paro	51	49
Pemagatshel	76	24
Punakha	49	51
SamdrupJongkhar	65	35
Samtse	62	38
Sarpang	77	23
Thimphu	51	49
Trashigang	73	27
Trashiyangtse	63	37
Trongsa	91	9
Tsirang	63	38
Wangduephodrang	74	26
Zhemgang	78	22
<b>Bhutan</b>	<b>67.9</b>	<b>32.1</b>

**Figure 4: Dzongkhag wise Proportion of HHs having earned cash income from sale of forest product, livestock product and other activities**



**Figure 5: Rural Households Cash Income from livestock, forest product and other activities in year 2012**





**Table 7.2: Cash income from livestock, forest products and other activities in year 2012**

<b>Livestock Products</b>		<b>Amount Earned [Million Nu]</b>
Meat (including fish products)		77.63
Dairy products(milk, butter, cheese n egg)		355.74
<b>Forest Products</b>		<b>Amount Earned [Million Nu]</b>
Bamboo products (mat, basket, bamboo shoot and others)		5.00
Cane products (cane shoot(patsh ), bangchung, cane rope and others)		8.37
Fern (Nakay)		2.50
Damru		0.87
Medicinal Aromatic Plants & Herbs		18.23
Wild Mushrooms		15.77
Cordyceps		165.48
<b>Other Activities</b>		<b>Amount Earned [Million Nu]</b>
Weaving (weaving and sale of woven products)		95.23
Pottering (carrying luggage and other loads)		161.05
Business/contract works		861.15

**Table 7.3: Cash income from processed cereals products**

<b>Commodities</b>	<b>Qty sold [MT]</b>	<b>Avg unit price [Nu/ kg]</b>	<b>Amt Earned [Million Nu]</b>	<b>Market Type (in %)</b>	
				<b>Domestic</b>	<b>Export</b>
<b>Buckwheat Flour</b>	3.7	51	0.18	100	0
<b>Kharang</b>	66.2	48	2.58	100	0
<b>Potato chips</b>	2.8	10	0.28	100	0
<b>Rice</b>	1,090.9	59	64.40	98.7	1.3
<b>Tengma</b>	370.3	89	30.31	100	0
<b>Wheat Flour</b>	17.3	45	0.65	100	0
<b>Zaw</b>	125.3	65	7.41	100	0

## 8) Use of Fertilizers and PP Chemicals

### a) Application of PP Chemicals and Chemical Fertilizers in Crops

**Table a.8.1: Proportion of Application of Chemical Fertilizes in Crops by Crop Type**

Crop Type	Chemical Fertilizers		If not applied, %reasons for not applying			If applied, total estimated area (acres)
	Applied	Not Applied	Aware of benefits of organic	Unavailable/unaffordable/never heard	Not necessary	
Cereal	11.7	88.3	20.1	26.0	53.8	14,977.86
Cucurbits	0.1	99.9	15.8	16.0	68.1	39.91
Legumes pulses	0.7	99.3	15.2	13.6	71.2	21.10
Oilseeds	1.4	98.6	21.7	19.8	58.5	95.28
Roots/Tubers	0.0	100.0	11.5	16.6	71.9	
Spices	0.7	99.3	18.2	20.2	61.5	51.91
Vegetables	5.6	94.4	19.1	23.9	57.0	6,649.19

**Table a.8.2: Proportion of Application of Chemical Fertilizers in Crops by Crop Name**

Crop Type	Crop Name	Chemical Fertilizers		If applied, Estimated total area applied(in acres)
		Applied	Not Applied	
Cereal	Barley	1.8	98.2	59.94
	Buckwheat	2.1	97.9	216.17
	Maize	11.5	88.5	5098.07
	Millet	1.5	98.5	62.85
	Paddy	22.7	77.3	9116.97
	Wheat	7.9	92.1	423.86
Cucurbits	Cucumber	0.1	99.9	5.37
	Pumpkin	0.2	99.8	34.54
Legumes & pulses	Ground nut	1.7	98.3	2.25
	Rajma bean	1.1	98.9	18.85

Oilseeds	Mustard	1.5	98.5	49.51
	Soya bean	1.5	98.5	45.77
Spices	Dolay Chilli	0.2	99.8	0.28
	Garlic	1.3	98.7	41.83
	Ginger	0.2	99.8	5.14
	Onion bulb	0.6	99.4	4.66
Vegetables	Asparagus	5.1	94.9	43.64
	Beans	2.3	97.7	110.10
	Broccoli	3.9	96.1	29.08
	Cabbage	6.3	93.7	271.37
	Carrot	4.8	95.2	67.75
	Cauliflower	3.8	96.2	45.66
	Chilli	7.9	92.1	743.87
	Egg Plant	2.6	97.4	17.07
	Green Leaves	1.4	98.6	72.35
	Peas	2.8	97.2	37.86
	Potato	19.2	80.8	4813.47
	Radish	1.8	98.2	116.89
	Tomato	3.2	96.8	17.23
	Turnip	5.2	94.8	262.85

**Table a.8.3: Proportion of Application of PP Chemicals in Crops by Crop Type**

Crop Name	PP Chemicals		If not applied, % reasons for not applying			If applied, Estimated total area applied(in acres)
	Applied	Not Applied	Aware of benefits of organic	Unavailable/unaffordable/never heard	Not necessary	
Cereal	3.8	96.2	17.3	23.9	58.8	5032.89
Cucurbits	0.1	99.9	14.6	15.5	69.9	0.03
Legumes& pulses	0.1	99.9	15.1	13.2	71.7	1.50
Oilseeds	0.2	99.8	18.7	20.0	61.3	3.06
Roots/Tubers	0.1	99.9	9.6	15.5	74.9	2.25
Spices	0.1	99.9	16.9	20.1	63.0	3.60
Vegetables	2.8	97.2	17.6	23.4	59.0	2732.55

**Table a.8.4: Proportion of Application of PP Chemicals in Crops by Crop Name**

Crop Type	Crop Name	PP Chemicals		If applied, Estimated total area applied(in acres)
		Applied	Not Applied	
Cereal	Barley	1.2	98.8	32.36
	Buckwheat	0.2	99.8	3.10
	Maize	2.1	97.9	709.92
	Millet	0.4	99.6	16.20
	Paddy	10.7	89.3	4242.88
	Wheat	0.6	99.4	28.43
Cucurbits	Cucumber	0.1	99.9	0.03
Legumes & pulses	Dal	0.4	99.6	1.50
Oilseeds	Mustard	0.4	99.6	3.06
Roots/Tubers	Tapioca	0.3	99.7	2.25
Spices	Garlic	0.1	99.9	3.15
	Ginger	0.1	99.9	0.45
Vegetables	Asparagus	1.2	98.8	6.60
	Beans	1.1	98.9	29.53
	Broccoli	3.7	96.3	25.06
	Cabbage	7.0	93.0	244.14
	Carrot	3.2	96.8	23.02
	Cauliflower	4.3	95.7	42.05
	Chilli	3.0	97.0	267.19
	Egg Plant	0.6	99.4	2.88
	Green Leaves	0.8	99.2	16.31
	Peas	2.6	97.4	19.60
	Potato	6.3	93.7	1969.14
	Radish	1.0	99.0	31.19
	Tomato	1.3	98.7	7.33
Turnip	1.2	98.8	48.51	

b) Application of PP Chemicals and Chemical Fertilizers in Fruit trees.

Table b.8.1 Proportion of Application of Chemical Fertilizers in Fruit trees

Commodities	Chemical Fertilizer		If not applied, % reasons for not applying			If applied, total tree applied
	Applied	Not Applied	Aware of benefits of organic	Unavailable/unaffordable/never heard	Not necessary	
Apple	28.2	71.8	15.1	27.3	57.5	188300
Apricot	0.0	100	0.0	100	0.0	
Areca Nut	0.0	100	17.3	21.0	61.7	
Avocado	0.0	100	0.0	53.8	46.2	
Banana	0.2	99.8	15.0	17.9	67.1	220
Cherry	0.0	100	0.0	0.0	100	
Coconut	0.0	100	0.0	0.0	100	
Guava	0.0	100	14.3	15.6	70.0	
Jack fruit	0.0	100	15.1	24.2	60.7	
Litchi	0.0	100	9.0	17.2	73.8	
Mandarin	1.4	98.6	17.2	28.4	54.3	21358
Mango	0.3	99.7	17.5	18.8	63.8	30
Papaya	0.0	100	18.1	21.9	60.0	
Passion fruit	0.3	99.7	21.3	20.9	57.8	
Peach	0.8	99.2	15.6	18.2	66.2	509
Pear	1.0	99.0	17.2	16.4	66.4	979
Persimmon	0.2	99.8	17.1	15.7	67.2	5
Pine Apple	0.0	100	21.6	22.0	56.4	
Plum	1.3	98.7	17.4	21.6	61.0	172
Pomegranate	0.0	100	15.3	19.4	65.3	
Sugarcane	0.0	100	15.4	15.9	68.8	
Tree tomato	0.0	100	16.2	19.9	63.9	
Walnut	1.2	98.8	16.0	19.3	64.7	536

**Table b.8.2: Proportion of Application of PP Chemicals in Fruit trees**

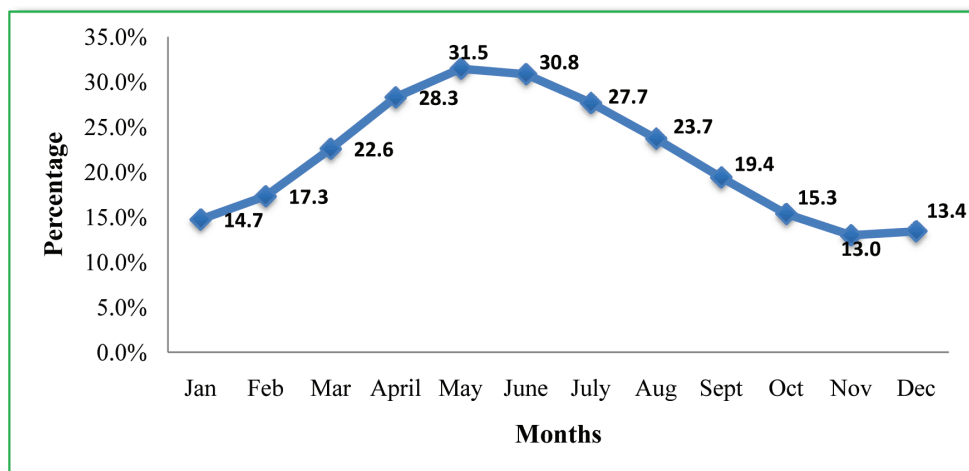
Commodities	PP Chemicals		If not applied , % reasons for not applying			If applied, total tree applied
	Applied	Not Applied	Aware of benefits of organic	Unavailable/unaffordable/never heard	Not necessary	
Apple	26.7	73.3	11.2	25.8	63.1	171730
Apricot	0.0	100	0.0	100.0	0.0	
Areca Nut	0.0	100	14.5	18.9	66.6	
Avocado	0.0	100	0.0	53.8	46.2	
Banana	0.1	99.9	14.6	16.3	69.0	29
cherry	0.0	100	0.0	0.0	100	
coconut	0.0	100	0.0	0.0	100	
Guava	0.1	99.9	13.3	14.4	72.3	22
Jack fruit	0.0	100	14.2	22.6	63.3	
Litchi	0.0	100	6.1	16.3	77.6	
Mandarin	1.1	98.9	16.4	28.5	55.1	23673
Mango	0.2	99.8	16.5	20.0	63.6	70
Papaya	0.0	100	14.9	19.1	66.0	
Passion fruit	0.0	100	18.5	21.5	60.0	
Peach	0.9	99.1	13.9	18.1	68.0	352
Pear	0.7	99.3	16.1	14.4	69.5	228
Persimmon	0.5	99.5	16.5	13.4	70.1	10
Pine Apple	0.0	100	21.6	22.5	55.9	
Plum	1.1	98.9	16.6	21.5	61.9	179
Pomegranate	0.4	99.6	13.0	16.9	70.1	10
Sugarcane	0.0	100	15.0	15.5	69.5	
Tree tomato	0.2	99.8	14.5	18.4	67.1	55
Walnut	0.4	99.6	13.8	18.4	67.9	124

## 9) Farming Household food self-sufficiency

Table 9.1: Proportion of farming households by food self-sufficiency (2012)

Dzongkhag	Did you produce enough food grains?		% HHs with food grains shortage by months											
	Enough	Not Enough	Jan	Feb	Mar	April	May	June	July	Aug	Sept	Oct	Nov	Dec
Bumthang	55.8	44.2	32.7	35.7	37.0	39.4	41.8	39.0	34.8	30.3	27.5	27.5	27.5	27.5
Chhukha	42.6	57.4	3.7	16.5	32.8	40.7	46.0	37.7	26.7	13.4	8.9	6.0	6.8	3.4
Dagana	43.2	56.8	12.7	15.3	20.9	28.1	37.0	37.8	39.0	36.8	31.7	23.7	16.9	16.8
Gasa	19.3	80.7	60.9	53.4	59.0	60.2	64.1	66.7	71.9	69.7	64.3	64.1	63.4	68.3
Haa	11.1	88.9	58.6	66.6	79.5	83.1	82.7	76.2	69.9	63.7	59.8	58.1	56.4	52.1
Lhuentse	65.9	34.1	12.6	11.5	8.0	4.5	12.3	20.5	19.7	16.4	5.1	2.3	8.1	10.0
Monggar	86.8	13.2	3.8	3.6	5.9	7.4	6.5	2.6	0.8	0.4	0.4	1.0	0.9	3.1
Paro	66.6	33.4	21.3	21.7	22.9	24.0	28.6	29.9	30.5	28.8	26.3	22.3	19.8	20.0
Pemagatshel	65.0	35.0	6.8	9.9	20.9	29.1	29.8	25.5	16.6	14.7	15.0	9.7	5.6	4.5
Punakha	72.8	27.2	7.8	9.5	10.4	13.4	17.4	22.0	25.6	25.7	23.2	14.2	7.4	7.2
S/fongkhar	51.8	48.2	6.5	13.7	26.3	39.3	35.8	25.6	13.0	6.8	3.0	1.4	1.2	2.5
Samtse	46.2	53.8	12.3	17.3	26.6	36.6	42.6	41.9	40.2	30.2	22.5	15.9	6.1	9.1
Sarpang	37.7	62.3	22.2	21.3	25.6	33.2	42.0	50.8	48.2	44.2	31.2	25.0	22.4	20.9
Thimphu	32.7	67.3	39.3	55.7	45.7	51.2	42.0	42.4	33.0	40.5	36.6	33.1	29.2	41.8
Trashigang	77.4	22.6	10.2	10.6	11.1	13.6	15.7	16.6	14.0	9.5	9.1	5.8	7.2	9.7
Trashiyang-tse	66.7	33.3	8.5	4.7	5.4	10.2	15.0	16.0	15.8	15.2	13.0	10.0	8.3	7.4
Trongsa	28.9	71.1	26.7	28.7	29.7	41.6	49.8	54.3	54.4	54.0	47.7	39.8	35.0	23.7
Tsirang	33.8	66.2	26.4	32.6	40.2	47.0	50.7	52.0	48.3	38.6	25.5	19.7	18.3	24.5
W/phodrang	50.6	49.4	26.5	26.8	33.4	35.9	34.8	36.0	38.3	40.8	40.1	35.7	30.6	26.0
Zhemgang	81.3	18.7	2.6	1.9	6.3	16.4	15.0	7.2	1.8	1.3	1.3	1.3	1.3	1.3
BHUTAN	56.6	43.4	14.7	17.3	22.6	28.3	31.5	30.8	27.7	23.7	19.4	15.3	13.0	13.4

**Figure 6: Estimated Proportion of farming HHs facing food grain shortages in the year 2012.**

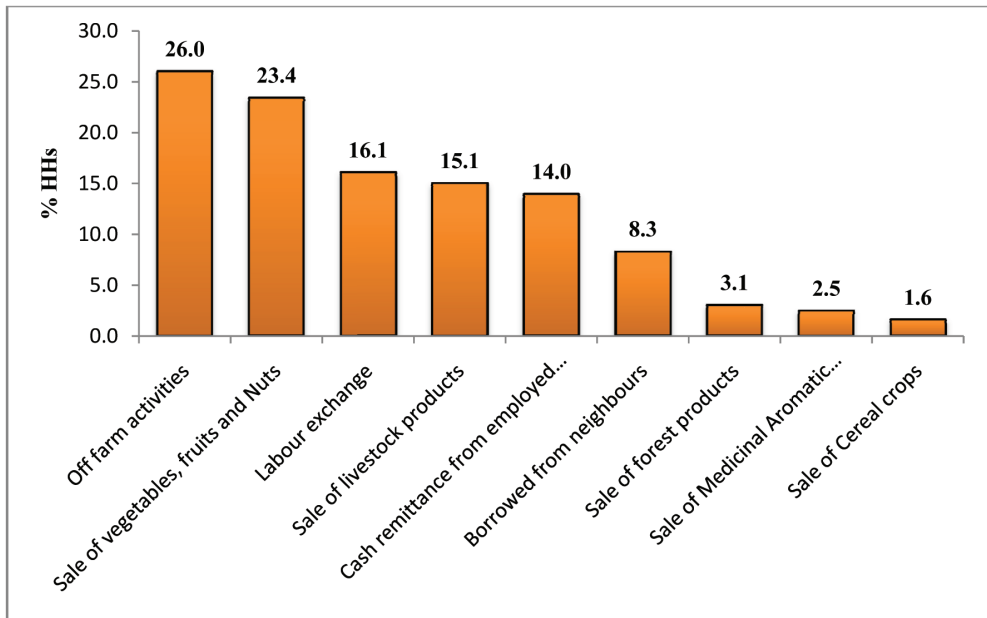


**Table 9.2: Food shortage coping mechanism in 2012**

Coping Mechanisms used	%HHs
Off farm activities (weaving, pottering, Business/contracts etc.)	26.0
Sale of vegetables, fruits and Nuts	23.4
Labour exchange	16.1
Sale of livestock products	15.1
Cash remittance from employed members	14.0
Borrowed from neighbours(cash or agricultural products)	8.3
Sale of forest products	3.1
Sale of Medicinal Aromatic plants(MAP)	2.5
Sale of Cereal crops	1.6



**Figure7: Proportion of HHs using various coping mechanisms to address the food shortages in 2012 for Bhutan.**

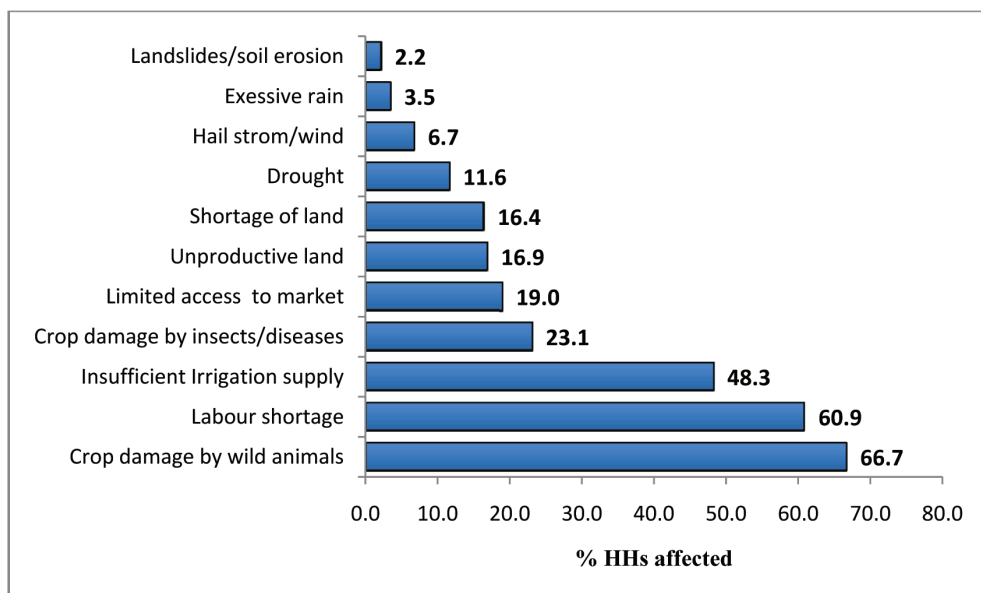


## 10) Farming Constrains faced

Table 10.1: Proportion of HHs affected by the various farming constrains in year 2012

Farming Constrains	% HHs affected by the farming constrains
Insufficient Irrigation supply	48.3
Unproductive land	16.9
Labour shortage	60.9
Crop damage by wild animals	66.7
Crop damage by insects/diseases	23.1
Drought	11.6
Excessive rain	3.5
Hail storm/wind	6.7
Landslides/soil erosion	2.2
Shortage of land	16.4
Limited access to market	19.0

Figure 8: Percentage of farming HHs affected by various constrains in year 2012 for Bhutan.



## 11) Major Crop Damage by natural Calamities in year 2012

### a) Cereal Crops

Paddy	Natural Calamities	Estimated Area affected (in acres)
	Army worm	42.00
	Damage by wild animals	67.31
	Disease	.90
	Drought	439.81
	excessive rain, hailstorm, wind	89.50
	landslide/soil erosion	96.93
	Hailstorm	117.48
	Hailstorm/ land slide	1.05
	Insects Pest	25.04
	Strong wind/heavy rain	61.26
	wind/bird	.60
	wind/drought	35.00
<b>Total area affected</b>		<b>976.88</b>

Maize	Natural Calamities	Estimated Area affected (in acres)
	Damage by wild animals	262.15
	Drought	2,387.91
	Drought/Excessive rain	12.50
	Excessive rain, hailstorm, wind	123.90
	Hail storm	869.65
	insects/pest/disease	53.80
	Landslides/soil erosion	60.33
	Pest	4.00
	Pest/ wild animal damage	3.40
	strong wind/wind storm	548.98
	windstorm/drought	115.32
<b>Total area affected</b>		<b>4,441.94</b>

Barley	Natural Calamities	Estimated Area affected (in acres)
	Drought	1.60
	Hail storm	1.05
<b>Total area affected</b>		<b>2.65</b>

Buckwheat	Natural Calamities	Estimated Area affected(in acres)
	Damage by wild animals	4.40
	Drought	10.55
	Frost	28.20
	Hailstorm/wind	83.06
<b>Total area affected</b>		<b>126.21</b>

Millet	Natural Calamities	Estimated Area affected (in acres)
	damaged by wild animals	1.98
	Drought	20.00
	Excessive/heavy rain	30.00
	Land slide/ soil erosion	7.80
<b>Total area affected</b>		<b>59.78</b>

Wheat	Natural Calamities	Estimated Area affected (in acres)
	Drought	10.00
	Excessive rainfall	8.84
	Hail storm	4.65
<b>Total area affected</b>		<b>23.49</b>

b) Major Horticulture Fruit trees

Apple	Natural Calamities	Estimated Area affected (in acres)
	Drought	115.5
	Hailstone	8.48
<b>Total areas affected</b>		<b>123.98</b>

Areca nut	Natural Calamities	Estimated Area affected (in acres)
	Drought	1.2
	Hailstorm/wind	2.25
	Wind storm	2.4
<b>Total areas affected</b>		<b>5.85</b>

Mandarin	Natural Calamities	Estimated Area affected (in acres)
	Disease	10.67
	Drought	26.7
	Drought/diseases	16.5
	Hail storm	45.55
	Hailstorm/wind	128.1
	Landslide/soil erosion	5.95
<b>Total areas affected</b>		<b>233.47</b>

c) **Vegetables and others**

Major Vegetables(excluding potato)	Estimated Area affected (in acres)
	173.10

Potato	Natural Calamities	Estimated Area affected (in acres)
	insects pest/disease	15.14
	Damage by wild animals	7.23
	Drought	86.36
	Excessive rainfall	8
	Landslide/soil erosion	10.19
	Frost	165.43
	Hailstorm/wind	58.41
<b>Total areas affected</b>		<b>350.76</b>

Crop Type	Crop Name	Natural Calamities	Estimated area affected (in acres)
Oil seeds	Mustard	excessive rain	7.50
Pulses	Rajmabean	Hail storm / drought	6.80
Spices	Cardamom	Drought/disease	87.00
	Ginger	Disease	.30
		excessive rain/unproductive land	1.50
		unproductive land	6.00

## 12) Road Access in 2012

Note. The road access refers to the accessibility of farming households to any type of roads that are pliable for motor vehicles

Proportion of rural households by walking distance to the nearest motor road points

Dzongkhag	Less than 1 hour	1 to 3 hours	4 to 6 hours	Above 6 hours
Bumthang	98.3	1.7	0.0	0.0
Chhukha	57.3	23.6	6.6	12.6
Dagana	64.2	25.5	5.0	5.2
Gasa	36.1	0.0	0.0	63.9
Haa	74.3	1.1	0.0	24.6
Lhuentse	61.8	18.7	9.7	9.8
Monggar	53.8	23.2	16.8	6.1
Paro	94.8	5.2	0.0	0.0
Pemagatshel	78.6	16.3	4.6	0.6
Punakha	80.4	19.6	0.0	0.0
SamdrupJongkhar	62.4	15.8	6.6	15.1
Samtse	44.3	34.5	16.1	5.2
Sarpang	75.7	13.0	7.0	4.3
Thimphu	88.0	0.0	0.0	12.2
Trashigang	85.9	9.9	0.3	3.9
Trashiyangtse	55.4	27.6	13.5	3.4
Trongsa	67.3	20.8	6.3	5.6
Tsirang	71.9	21.9	5.3	0.8
Wangduephodrang	66.1	24.7	6.7	2.5
Zhemgang	41.5	12.7	11.9	33.9
<b>BHUTAN</b>	<b>67.6</b>	<b>18.5</b>	<b>6.9</b>	<b>7.0</b>





# Part 2

Dzongkhag level Statistics



**Bumthang Dzongkhag**

<b>Crop Type</b>	<b>Crop Name</b>	<b>Cultivated Area(Acres)</b>	<b>Quantity Produced(Kgs)</b>	<b>Yield(Kg/ acre)</b>
<b>Cereal</b>	<b>Barley</b>	315.48	205,062	650
	<b>Buckwheat</b>	657.00	407,340	620
	<b>Paddy</b>	90.59	119,125	1,315
	<b>Wheat</b>	381.75	366,480	960
<b>Cucurbits</b>	<b>Cucumber</b>		5,370	
	<b>Pumpkin</b>		6,672	
<b>Oilseeds</b>	<b>Mustard</b>	84.09	15,171	180
	<b>Sunflower</b>	24.60	10,320	420
<b>Spices</b>	<b>Garlic</b>	3.71	8,469	2,280
	<b>Onion bulb</b>	.10	54	540
<b>Vegetables</b>	<b>Asparagus</b>	.12	72	600
	<b>Beans</b>	3.95	16,188	4,100
	<b>Broccoli</b>	2.14	6,780	3,170
	<b>Cabbage</b>	54.88	81,615	1,487
	<b>Carrot</b>	6.37	29,724	4,667
	<b>Cauliflower</b>		31,125	
	<b>Chilli</b>	52.00	42,222	812
	<b>Egg Plant</b>	.12	240	2,000
	<b>Green Leaves</b>		28,269	
	<b>Peas</b>		4,593	
	<b>Potato</b>	773.08	3,607,752	4,667
	<b>Radish</b>		142,641	
	<b>Tomato</b>		546	
<b>Turnip</b>		286,278		

<b>Commodities</b>	<b>Total Trees</b>	<b>Bearing Trees</b>	<b>Qty produced(Kgs)</b>	<b>Yield(kg/ bearing tree)</b>
<b>Apple</b>	8,883	8,262	349,797	42
<b>Peach</b>	501	438	11,193	26
<b>Pear</b>	285	273	17,520	64
<b>Plum</b>	258	240	24,120	101
<b>Walnut</b>	1,422	1,086	14,592	13

### Chhukhag Dzongkhag

Crop Type	Crop Name	Cultivated Area(Acres)	Quantity Produced(Kgs)	Yield(Kg/acre)
Cereal	Barley	71.92	46,388	645
	Buckwheat	647.34	343,841	531
	Maize	3,120.64	2,329,264	746
	Millet	911.14	592,241	650
	Paddy	1,887.69	2,503,435	1,326
	Wheat	314.07	235,553	750
Cucurbits	Cucumber		106,388	
	Gourds		21,740	
	Pumpkin		282,283	
	Squash		374,623	
Legumes & pulses	Dal	89.25	11,807	132
	Ground nut	3.46	624	180
	Lentil	0.75	150	200
	Mung bean	6.66	1,050	158
	Rajma bean	28.52	31,747	1,113
Oilseeds	Mustard	338.44	65,603	194
	Others	2.25	450	200
	Perilla (Naam)	44.76	5,880	131
	Soya bean	7.70	2,456	319
	Sunflower	0.12	24	200
Roots/Tubers	Collocacia	15.86	5,018	316
	Sweet potato	5.90	2,379	403
	Tapioca	46.10	45,960	997
	yam	13.10	9,088	694

<b>Spices</b>	<b>Cardamom</b>	1,191.38	183,152	154
	<b>Dolay Chilli</b>		10,872	
	<b>Garlic</b>	14.52	8,610	593
	<b>Ginger</b>	385.12	1,335,882	3,469
	<b>Onion bulb</b>	13.68	9,248	676
<b>Vegetables</b>	<b>Asparagus</b>	10.18	1,065	105
	<b>Beans</b>	280.95	231,942	826
	<b>Broccoli</b>	22.72	20,933	921
	<b>Cabbage</b>	128.08	247,005	1,929
	<b>Carrot</b>	75.87	125,261	1,651
	<b>Cauliflower</b>	40.79	36,849	903
	<b>Chilli</b>	525.00	387,213	738
	<b>Egg Plant</b>	9.61	10,150	1,056
	<b>Green Leaves</b>	193.78	292,568	1,510
	<b>Lady Finger</b>	0.99	408	412
	<b>Peas</b>	95.61	125,698	1,315
	<b>Potato</b>	1,235.00	4,161,574	3,370
	<b>Radish</b>		402,654	
	<b>Tomato</b>	18.59	21,682	1,166
<b>Turnip</b>		974,329		

<b>Commodities</b>	<b>Total Trees</b>	<b>Bearing Trees</b>	<b>Qty produced(Kgs)</b>	<b>Yield(kg/ bearing tree)</b>
<b>Apple</b>	8,599	5,985	158,569	26
<b>Areca Nut</b>	43,021	29,031	295,318	10
<b>Banana</b>			95,987	
<b>coconut</b>	45	15	1,500	100
<b>Guava</b>	717	578	51,205	89

<b>Jack fruit</b>	186	150	36,920	246
<b>Litchi</b>	453			
<b>Mandarin</b>	132,152	78,817	1,968,563	25
<b>Mango</b>	1,697	200	13,400	67
<b>Papaya</b>	84	70	420	6
<b>Passion fruit</b>			14,352	
<b>Peach</b>	1,627	1,363	54,338	40
<b>Pear</b>	759	664	41,097	62
<b>Persimmon</b>	308	15	400	27
<b>Pine Apple</b>			1,984	
<b>Plum</b>	164	136	6,164	45
<b>Pomegranate</b>	148	70	560	8
<b>Sugarcane</b>			14,174	
<b>Tree tomato</b>	2,110	1,926	10,405	5
<b>Walnut</b>	3,265	2,548	13,031	5

### Dagana Dzongkhag

Crop Type	Crop Name	Cultivated Area(Acres)	Quantity Produced(Kgs)	Yield(Kg/acre)
Cereal	Barley	94.76	78,651	830
	Buckwheat	565.56	360,827	638
	Maize	6,555.72	6,870,395	1,048
	Millet	670.76	554,048	826
	Paddy	3,863.53	5,668,876	1,467
	Wheat	67.41	57,298	850
Cucurbits	Cucumber		142,519	
	Gourds		9,112	
	Pumpkin		453,536	
	Squash		240,060	
Legumes & pulses	Dal	88.18	18,560	210
	Ground nut	0.05	50	1,000
	Lentil	42.23	9,043	214
	Mung bean	81.46	22,100	271
	Rajma bean	250.34	64,643	258
Oilseeds	Mustard	238.67	45,806	192
	Perilla (Naam)	0.05	30	600
	Soya bean	39.11	13,162	337
	Sunflower	0.08	24	300
Roots/Tubers	Collocacia	24.18	17,719	733
	Sweet potato	17.29	10,814	625
	Tapioca	25.68	19,103	744
	yam		33	
Spices	Cardamom	340.20	29,037	85
	Dolay Chilli		17,373	
	Garlic	58.97	13,358	227
	Ginger	66.63	33,083	497
	Onion bulb	34.71	12,296	354

<b>Vegetables</b>	<b>Asparagus</b>	4.42	265	60
	<b>Beans</b>	212.59	73,969	348
	<b>Broccoli</b>	28.88	7,856	272
	<b>Cabbage</b>	75.75	75,205	993
	<b>Carrot</b>	7.79	3,795	487
	<b>Cauliflower</b>	36.97	22,749	615
	<b>Chilli</b>	206.53	80,864	392
	<b>Egg Plant</b>	29.35	8,153	278
	<b>Green Leaves</b>	170.34	195,252	1,146
	<b>Lady Finger</b>	0.74	684	924
	<b>Peas</b>	16.67	4,294	258
	<b>Potato</b>	218.46	216,712	992
	<b>Radish</b>	132.88	153,701	1,157
	<b>Tomato</b>	35.80	17,292	483
<b>Turnip</b>	20.71	21,845	1,055	

<b>Commodities</b>	<b>Total Trees</b>	<b>Bearing Trees</b>	<b>Qty produced(Kgs)</b>	<b>Yield(kg/ bearing tree)</b>
<b>Apple</b>	671	470	2,181	5
<b>Areca Nut</b>	143,506	67,079	513,430	8
<b>Banana</b>			154,632	
<b>Guava</b>	3,911	2,293	50,366	22
<b>Jack fruit</b>	749	565	23,330	41
<b>Litchi</b>	1,900	287	9,790	34
<b>Mandarin</b>	361,192	189,897	5,367,884	28
<b>Mango</b>	6,393	2,956	55,800	19
<b>Papaya</b>	256	242	9,460	39
<b>Passion fruit</b>	85	249	26,125	105
<b>Peach</b>	2,644	1,670	62,605	37
<b>Pear</b>	3,205	1,850	123,128	67
<b>Persimmon</b>	99	77	3,920	51
<b>Pine Apple</b>			465	
<b>Plum</b>	956	628	29,360	47
<b>Pomegranate</b>	371	229	5,947	26
<b>Sugarcane</b>			20,345	
<b>Tree tomato</b>	2,517	2,273	13,764	6
<b>Walnut</b>	3,906	209	3,255	16



### Gasa Dzongkhag

Crop Type	Crop Name	Cultivated Area(Acres)	Quantity Produced(Kgs)	Yield(Kg/acre)
Cereal	Barley	265.23	194,646	734
	Maize	3.30	3,800	1,152
	Paddy	188.52	284,626	1,510
	Wheat	45.00	47,680	1,060
Cucurbits	Cucumber		720	
Oilseeds	Mustard	.40	240	600
Spices	Garlic	10.40	7,560	727
	Ginger	.32	200	625
Vegetables	Asparagus	2.00	2,200	1,100
	Beans	11.16	10,700	959
	Broccoli	2.68	1,032	385
	Cabbage	9.74	9,756	1,002
	Carrot	6.64	8,660	1,304
	Cauliflower	.20	200	1,000
	Chilli	31.42	22,940	730
	Green Leaves	12.64	10,544	834
	Peas	1.48	1,820	1,230
	Potato	92.05	225,412	2,449
	Radish	19.87	16,885	850
Turnip	18.46	12,026	651	

Commodities	Total Trees	Bearing Trees	Qty produced(Kgs)	Yield(kg/bearing tree)
Apple	52	32	820	26
Peach	32	20	300	15
Pear	224	48	560	12
Persimmon	12	12	200	17
Tree tomato	104	96	1,160	12

## Haa Dzongkhag

Crop Type	Crop Name	Cultivated Area(Acres)	Quantity Produced(Kgs)	Yield(Kg/acre)
Cereal	Barley	78.04	61,808	792
	Buckwheat	539.95	372,566	690
	Maize	416.00	347,254	835
	Millet	98.50	82,740	840
	Paddy	146.90	222,790	1,517
	Wheat	937.97	1,003,628	1,070
Cucurbits	Cucumber		24,415	
	Gourds		11,485	
	Pumpkin		115,339	
	Squash		41,560	
Legumes & pulses	Rajma bean	.55	385	700
Oilseeds	Mustard	86.38	24,138	279
	Perilla (Naam)	73.55	5,455	74
	Soya bean	4.55	1,365	300
Roots/Tubers	Collocacia	2.10	2,320	1,105
	Sweet potato	.56	560	1,000
	Tapioca	1.48	4,200	2,830
Spices	Cardamom	517.25	29,820	58
	Dolay Chilli	4.20	1,558	371
	Garlic	13.19	7,378	559
	Ginger	2.10	875	417
	Onion bulb	1.51	1,043	691

<b>Vegetables</b>	<b>Asparagus</b>	2.98	424	142
	<b>Beans</b>	32.45	12,786	394
	<b>Broccoli</b>	2.36	2,845	1,206
	<b>Cabbage</b>	46.90	59,296	1,264
	<b>Carrot</b>	8.61	13,698	1,591
	<b>Cauliflower</b>	4.78	9,835	2,058
	<b>Chilli</b>	124.62	32,571	261
	<b>Cultivated Mushroom</b>		22	
	<b>Egg Plant</b>	.70	140	200
	<b>Green Leaves</b>	42.14	26,975	640
	<b>Peas</b>	85.35	115,452	1,353
	<b>Potato</b>	671.63	2,638,712	3,929
	<b>Radish</b>	65.66	93,556	1,425
	<b>Tomato</b>	.49	140	286
<b>Turnip</b>		3,167,435		

<b>Commodities</b>	<b>Total Trees</b>	<b>Bearing Trees</b>	<b>Qty produced(Kgs)</b>	<b>Yield(kg/ bearing tree)</b>
<b>Apple</b>	27,143	21,061	467,042	22
<b>Banana</b>			9,482	
<b>Guava</b>	14	14	175	13
<b>Mandarin</b>	464	400	11,840	30
<b>Peach</b>	558	348	11,720	34
<b>Pear</b>	127	87	1,280	15
<b>Persimmon</b>	7	7	140	20
<b>Plum</b>	84	76	2,311	30
<b>Sugarcane</b>			464	
<b>Tree tomato</b>	356	311	2,398	8
<b>Walnut</b>	699	272	4,262	16

## Lhuntse Dzongkhag

Crop Type	Crop Name	Cultivated Area(Acres)	Quantity Produced(Kgs)	Yield(Kg/acre)
Cereal	Maize	2334.95	3,227,736	1,382
	Millet	75.43	65,740	872
	Paddy	3,827	5,065,580	1,324
	Wheat	66.74	43,035	645
Cucurbits	Cucumber		96,447	
	Gourds		1,300	
	Pumpkin		104,005	
	Squash		43,980	
Oilseeds	Mustard	31.90	27,607	865
	Soya bean	9.58	3,379	353
Spices	Garlic	63.39	39,734	627
	Ginger	2.67	4,031	1,510
	Onion bulb	.40	500	1,250
Vegetables	Asparagus	.76	250	329
	Beans	62.26	62,810	1,009
	Broccoli	16.94	11,623	686
	Cabbage	196.42	124,102	632
	Carrot	12.85	10,860	845
	Cauliflower	35.22	31,196	886
	Chilli	597.17	442,774	741
	Egg Plant	25.58	18,140	709
	Green Leaves	49.50	31,219	631
	Peas	11.72	10,315	880
	Potato	303.89	891,321	2,933
	Radish	87.90	143,256	1,630
Tomato	2.72	5,163	1,898	

<b>Commodities</b>	<b>Total Trees</b>	<b>Bearing Trees</b>	<b>Qty produced(Kgs)</b>	<b>Yield(kg/ bearing tree)</b>
<b>Apple</b>	1,308	503	9,381	19
<b>Banana</b>			4,436	
<b>Guava</b>	507	507	22,325	44
<b>Mandarin</b>	10,893	3,819	116,608	31
<b>Mango</b>	173	20	500	25
<b>Passion fruit</b>			1,440	
<b>Peach</b>	2,278	1,885	67,063	36
<b>Pear</b>	1,619	915	64,185	70
<b>Plum</b>	999	742	35,845	48
<b>Pomegranate</b>	269	204	5,985	29
<b>Sugarcane</b>			200	
<b>Tree tomato</b>	3,038	2,592	31,762	12
<b>Walnut</b>	583	167	7,172	43

**Mongar Dzongkhag**

<b>Crop Type</b>	<b>Crop Name</b>	<b>Cultivated Area(Acres)</b>	<b>Quantity Produced(Kgs)</b>	<b>Yield(Kg/acre)</b>
<b>Cereal</b>	<b>Barley</b>	939.87	610,918	650
	<b>Buckwheat</b>	371.98	208,308	560
	<b>Maize</b>	8480.71	10,419,527	1,229
	<b>Millet</b>	28.33	17,565	620
	<b>Paddy</b>	2024.80	2,670,755	1,319
	<b>Wheat</b>	132.91	104,020	783
<b>Cucurbits</b>	<b>Cucumber</b>		180,679	
	<b>Gourds</b>		732	
	<b>Pumpkin</b>		348,328	
	<b>Squash</b>		2,905	
<b>Legumes &amp; pulses</b>	<b>Dal</b>	2.75	880	320
	<b>Ground nut</b>	9.63	4,120	428
	<b>Lentil</b>	1.08	132	122
	<b>Mung bean</b>	78.84	35,075	445
	<b>Rajma bean</b>	248.52	95,662	385
<b>Oilseeds</b>	<b>Mustard</b>	30.59	10,488	343
	<b>Perilla (Naam)</b>	1.10	165	150
	<b>Soya bean</b>	90.70	33,911	374
	<b>Sunflower</b>	4.49	794	177
<b>Roots/Tubers</b>	<b>Collocacia</b>	51.08	84,224	1,649
	<b>Sweet potato</b>	7.51	3,873	516
	<b>Tapioca</b>	5.92	1,123	190
	<b>Yam</b>	4.29	755	176
<b>Spices</b>	<b>Dolay Chilli</b>	42.36	13,177	311
	<b>Garlic</b>	175.12	88,803	507
	<b>Ginger</b>	35.17	10,712	305
	<b>Onion bulb</b>	73.47	21,063	287

<b>Vegetables</b>	<b>Asparagus</b>	23.30	5,047	217
	<b>Beans</b>	270.15	207,869	769
	<b>Broccoli</b>	31.97	46,034	1,440
	<b>Cabbage</b>	274.07	257,497	940
	<b>Carrot</b>	21.33	28,907	1,355
	<b>Cauliflower</b>	70.30	89,814	1,278
	<b>Chilli</b>	678.63	470,223	693
	<b>Egg Plant</b>	10.64	12,501	1,175
	<b>Green Leaves</b>	174.38	136,894	785
	<b>Peas</b>	33.82	59,213	1,751
	<b>Potato</b>	1637.62	3,516,237	2,147
	<b>Radish</b>	363.95	589,337	1,619
	<b>Tomato</b>	1.35	1,202	890
<b>Turnip</b>	10.38	9,912	955	

<b>Commodities</b>	<b>Total Trees</b>	<b>Bearing Trees</b>	<b>Qty produced(Kgs)</b>	<b>Yield(kg/ bearing tree)</b>
<b>Apple</b>	4,382	964	23,843	25
<b>Areca Nut</b>	1,276	330	2,090	6
<b>Avocado</b>	24	12	5,400	450
<b>Banana</b>			37,577	
<b>Guava</b>	1,588	1,079	47,170	44
<b>Jack fruit</b>	136	92	4,750	52
<b>Litchi</b>	143			
<b>Mandarin</b>	150,620	44,145	2,127,171	48
<b>Mango</b>	3,812	2,144	82,645	39
<b>Papaya</b>	153	131	1,948	15
<b>Passion fruit</b>			8,729	
<b>Peach</b>	5,933	3,652	183,616	50
<b>Pear</b>	6,395	3,079	200,194	65
<b>Persimmon</b>	491	229	7,790	34
<b>Pine Apple</b>			1,876	
<b>Plum</b>	2,866	1,748	96,146	55
<b>Pomegranate</b>	452	146	5,360	37
<b>Sugarcane</b>			3,569	
<b>Tree tomato</b>	2,853	2,542	33,697	13
<b>Walnut</b>	5,544	1,215	21,813	18

Paro Dzongkhag

Crop Type	Crop Name	Cultivated Area(Acres)	Quantity Produced(Kgs)	Yield(Kg/acre)
Cereal	Barley	48.45	48,120	993
	Buckwheat	208.50	89,170	428
	Maize	54.36	46,206	850
	Millet	.20	100	500
	Paddy	3950.43	7,763,899	1,965
	Wheat	644.52	664,500	1,031
Cucurbits	Cucumber		107,652	
	Pumpkin		131,340	
	Squash		600	
Legumes &pulses	Rajma bean	3.50	2,100	600
Oilseeds	Mustard	49.00	17,900	365
Spices	Garlic	6.90	4,960	719
	Ginger	.20	120	600
	Onion bulb	2.69	2,980	1,108
Vegetables	Asparagus	117.33	72,070	614
	Beans	96.57	160,291	1,660
	Broccoli	9.27	11,019	1,189
	Cabbage	385.86	914,137	2,369
	Carrot	60.86	120,008	1,972
	Cauliflower	5.15	6,819	1,324
	Chilli	651.24	1,429,137	2,194
	Cultivated Mushroom		1,060	
	Egg Plant	16.58	29,146	1,758
	Green Leaves	28.80	35,916	1,247
	Peas	147.98	201,521	1,362
	Potato	805.04	3,648,655	4,532
	Radish	91.35	240,357	2,631
	Tomato	28.11	75,670	2,692
Turnip	150.90	457,128	3,029	



<b>Commodities</b>	<b>Total Trees</b>	<b>Bearing Trees</b>	<b>Qty produced(Kgs)</b>	<b>Yield(kg/ bearing tree)</b>
<b>Apple</b>	187,378	154,254	3,752,517	24
<b>Apricot</b>	105	105	5,250	50
<b>Cherry</b>	18	18	135	8
<b>Peach</b>	4,577	4,242	247,927	58
<b>Pear</b>	703	513	26,651	52
<b>Persimmon</b>	156	101	10,082	100
<b>Plum</b>	286	269	11,668	43
<b>Pomegranate</b>	310	150	6,690	45
<b>Walnut</b>	2,400	1,186	57,284	48

**Pemagatshel Dzongkhag**

<b>Crop Type</b>	<b>Crop Name</b>	<b>Cultivated Area(Acres)</b>	<b>Quantity Produced(Kgs)</b>	<b>Yield(Kg/ acre)</b>
<b>Cereal</b>	<b>Barley</b>	55.57	34,843	627
	<b>Buckwheat</b>	307.16	199,654	650
	<b>Maize</b>	5075.52	5,902,955	1,163
	<b>Millet</b>	223.29	160,769	720
	<b>Paddy</b>	213.01	254,617	1,195
	<b>Wheat</b>	101.87	95,758	940
<b>Cucurbits</b>	<b>Cucumber</b>		104,399	
	<b>Gourds</b>		3,402	
	<b>Pumpkin</b>		465,830	
	<b>Squash</b>		114,420	
<b>Legumes &amp; pulses</b>	<b>Ground nut</b>	13.34	8,287	621
	<b>Lentil</b>	1.95	2,340	1,200
	<b>Mung bean</b>	7.70	3,333	433
	<b>Rajma bean</b>	25.94	9,341	360
<b>Oilseeds</b>	<b>Mustard</b>	47.96	13,301	277
	<b>Perilla (Naam)</b>	4.60	1,397	304
	<b>Soya bean</b>	118.84	20,954	176
	<b>Sunflower</b>	.53	105	200
<b>Roots/Tubers</b>	<b>Collocacia</b>	16.11	33,476	2,078
	<b>Sweet potato</b>	20.07	17,183	856
	<b>Tapioca</b>	41.21	34,406	835
<b>Spices</b>	<b>Cardamom</b>		23,855	
	<b>Dolay Chilli</b>		3,797	
	<b>Garlic</b>	76.23	27,596	362
	<b>Ginger</b>	111.75	89,610	802
	<b>Onion bulb</b>	17.29	8,295	480

<b>Vegetables</b>	<b>Asparagus</b>	5.59	1,313	235
	<b>Beans</b>	114.48	75,149	656
	<b>Broccoli</b>	17.47	12,577	720
	<b>Cabbage</b>	130.63	141,302	1,082
	<b>Carrot</b>	4.51	5,329	1,183
	<b>Cauliflower</b>	74.48	57,428	771
	<b>Chilli</b>	386.20	180,875	468
	<b>Egg Plant</b>	15.68	16,268	1,038
	<b>Green Leaves</b>	79.73	52,019	652
	<b>Peas</b>	20.10	9,644	480
	<b>Potato</b>	599.05	1,946,962	3,250
	<b>Radish</b>	205.38	442,446	2,154
	<b>Tomato</b>	8.79	3,969	451
<b>Turnip</b>	12.57	5,935	472	

<b>Commodities</b>	<b>Total Trees</b>	<b>Bearing Trees</b>	<b>Qty produced(Kgs)</b>	<b>Yield(kg/ bearing tree)</b>
<b>Apple</b>	253	23	330	14
<b>Areca Nut</b>	6,550	1,529	17,808	12
<b>Banana</b>			68,325	
<b>Guava</b>	4,061	2,227	24,848	11
<b>Jack fruit</b>	854	205	17,574	86
<b>Litchi</b>	1,332	-	-	
<b>Mandarin</b>	448,077	257,771	9,981,058	39
<b>Mango</b>	2,356	393	4,613	12
<b>Papaya</b>	289	205	1,001	5
<b>Passion fruit</b>			2,516	
<b>Peach</b>	2,506	1,798	151,482	84
<b>Pear</b>	919	250	52,900	212
<b>Persimmon</b>	80	30	100	3
<b>Pine Apple</b>			16,035	
<b>Plum</b>	945	642	33,785	53
<b>Pomegranate</b>	372	196	3,212	16
<b>Sugarcane</b>			28,999	
<b>Tree tomato</b>	2,852	2,504	13,255	5
<b>Walnut</b>	1,234	295	4,220	14

**Punakha Dzongkhag**

<b>Crop Type</b>	<b>Crop Name</b>	<b>Cultivated Area(Acres)</b>	<b>Quantity Produced(Kgs)</b>	<b>Yield(Kg/ acre)</b>
<b>Cereal</b>	<b>Barley</b>	52.45	50,562	964
	<b>Buckwheat</b>	80.71	56,093	695
	<b>Maize</b>	371.80	208,127	560
	<b>Millet</b>	1.25	838	670
	<b>Paddy</b>	5095.06	9,350,883	1,835
	<b>Wheat</b>	405.42	439,475	1,084
<b>Cucurbits</b>	<b>Cucumber</b>		268,454	
	<b>Gourds</b>		2,035	
	<b>Pumpkin</b>		63,444	
	<b>Squash</b>		82,820	
<b>Legumes &amp; pulses</b>	<b>Ground nut</b>	3.50	125	36
	<b>Rajma bean</b>	1.75	850	486
<b>Oilseeds</b>	<b>Mustard</b>	108.00	17,797	165
	<b>Perilla (Naam)</b>	2.61	216	83
	<b>Soya bean</b>	2.36	1,361	577
<b>Roots/Tubers</b>	<b>Collocacia</b>	2.50	500	200
	<b>Sweet potato</b>	1.12	798	713
	<b>Tapioca</b>	.39	340	872
<b>Spices</b>	<b>Garlic</b>	41.29	16,010	388
	<b>Ginger</b>	4.87	1,159	238
	<b>Onion bulb</b>	32.12	19,246	599

<b>Vegetables</b>	<b>Asparagus</b>	13.76	3,279	238
	<b>Beans</b>	161.56	194,930	1,207
	<b>Broccoli</b>	17.45	14,210	814
	<b>Cabbage</b>	27.87	49,731	1,784
	<b>Carrot</b>	20.06	33,460	1,668
	<b>Cauliflower</b>	2.80	4,910	1,754
	<b>Chilli</b>	394.94	787,986	1,995
	<b>Egg Plant</b>	14.10	45,825	3,250
	<b>Green Leaves</b>	71.14	156,620	2,202
	<b>Lady Finger</b>	.42	252	600
	<b>Peas</b>	70.54	51,715	733
	<b>Potato</b>	44.01	87,365	1,985
	<b>Radish</b>	69.33	211,730	3,054
	<b>Tomato</b>	19.32	33,269	1,722
<b>Turnip</b>	35.42	46,442	1,311	

<b>Commodities</b>	<b>Total Trees</b>	<b>Bearing Trees</b>	<b>Qty produced(Kgs)</b>	<b>Yield(kg/ bearing tree)</b>
<b>Apple</b>	300	212	4,190	20
<b>Banana</b>			11,846	
<b>Guava</b>	4,780	4,385	144,202	33
<b>Jack fruit</b>	23	7	35	5
<b>Litchi</b>	5			
<b>Mandarin</b>	30,397	18,326	399,017	22
<b>Mango</b>	2,986	741	17,040	23
<b>Papaya</b>	20	20	1,550	78
<b>Passion fruit</b>			7,852	
<b>Peach</b>	1,697	1,057	87,853	83
<b>Pear</b>	2,572	1,748	117,475	67
<b>Persimmon</b>	1,734	1,298	100,945	78
<b>Plum</b>	808	465	61,855	133
<b>Pomegranate</b>	732	602	13,191	22
<b>Sugarcane</b>			15,075	
<b>Tree tomato</b>	8,493	4,800	94,440	20
<b>Walnut</b>	1,951	594	23,147	39

## SamdrupJongkhar Dzongkhag

Crop Type	Crop Name	Cultivated Area(Acres)	Quantity Produced(Kgs)	Yield(Kg/ acre)
Cereal	Barley	298.09	221,183	742
	Buckwheat	1,076.68	826,680	768
	Maize	4,712.02	6,361,188	1,350
	Millet	296.22	151,016	510
	Paddy	2,467.96	3,677,403	1,490
	Wheat	38.79	28,562	736
Cucurbits	Cucumber		348,040	
	Gourds		19,477	
	Pumpkin		570,919	
	Squash		126,882	
Legumes &pulses	Dal	24.69	9,494	385
	Ground nut	1.72	830	483
	Lentil	7.63	3,535	463
	Mung bean	17.70	5,596	316
	Rajma bean	153.06	47,344	309
Oilseeds	Mustard	263.12	74,777	284
	Perilla (Naam)	19.80	2,812	142
	Soya bean	118.34	28,176	238
	Sunflower	0.66	88	133
Roots/Tubers	Collocacia	14.73	21,769	1,478
	Sweet potato	15.89	12,798	805
	Tapioca	27.53	17,213	625
	yam	7.89	7,215	914
Spices	Cardamom	26.76	3,276	122
	Dolay Chilli	1.84	2,751	1,495
	Garlic	137.49	43,133	314
	Ginger	305.60	589,026	1,927
	Onion bulb	30.22	16,064	532

<b>Vegetables</b>	<b>Asparagus</b>	1.57	1,238	789
	<b>Beans</b>	185.78	120,117	647
	<b>Broccoli</b>	17.06	18,322	1,074
	<b>Cabbage</b>	73.47	62,417	850
	<b>Carrot</b>	10.70	7,783	727
	<b>Cauliflower</b>	46.98	28,699	611
	<b>Chilli</b>	403.32	302,492	750
	<b>Egg Plant</b>	17.30	10,013	579
	<b>Green Leaves</b>	193.82	157,787	814
	<b>Lady Finger</b>	0.28	98	350
	<b>Peas</b>	30.22	19,622	649
	<b>Potato</b>	684.31	1,436,842	2,100
	<b>Radish</b>	219.17	287,535	1,312
<b>Tomato</b>	8.88	7,148	805	

<b>Commodities</b>	<b>Total Trees</b>	<b>Bearing Trees</b>	<b>Qty produced(Kgs)</b>	<b>Yield(kg/ bearing tree)</b>
<b>Apple</b>	1,714	926	45,260	49
<b>Areca Nut</b>	69,226	47,807	579,232	12
<b>Banana</b>			119,033	
<b>Guava</b>	2,633	1,903	56,540	30
<b>Jack fruit</b>	636	480	40,910	85
<b>Litchi</b>	395	84	5,810	69
<b>Mandarin</b>	197,100	88,750	5,067,542	57
<b>Mango</b>	3,020	980	24,953	25
<b>Papaya</b>	459	371	37,128	100
<b>Passion fruit</b>			6,805	
<b>Peach</b>	3,957	2,176	147,930	68
<b>Pear</b>	4,190	1,473	91,219	62
<b>Persimmon</b>	368	48	1,600	33
<b>Pine Apple</b>			7,839	
<b>Plum</b>	1,408	534	25,505	48
<b>Pomegranate</b>	235	103	647	6
<b>Sugarcane</b>			31,876	
<b>Tree tomato</b>	2,134	1,803	12,784	7
<b>Walnut</b>	3,928	395	11,340	29

## Samtse Dzongkhag

Crop Type	Crop Name	Cultivated Area(Acres)	Quantity Produced(Kgs)	Yield(Kg/acre)
Cereal	Barley	65.50	43,754	668
	Buckwheat	182.50	124,830	684
	Maize	6,673.10	6,392,662	958
	Millet	1,578.37	978,589	620
	Paddy	7,178.62	9,843,692	1,371
	Wheat	254.18	198,260	780
Cucurbits	Cucumber		76,124	
	Gourds		6,200	
	Pumpkin		209,636	
	Squash		270,959	
Legumes & pulses	Dal	114.36	42,525	372
	Lentil	0.90	500	556
	Mung bean	53.97	16,115	299
	Rajma bean	12.80	8,210	641
Oilseeds	Mustard	220.02	64,657	294
	Soya bean	48.60	5,303	109
Roots/Tubers	Collocacia	48.34	27,163	562
	Sweet potato	8.61	4,538	527
	Tapioca	124.30	116,155	934
	yam	0.72	680	944
Spices	Cardamom	2,460.78	305,413	124
	Dolay Chilli		12,716	
	Garlic	23.37	33,510	1,434
	Ginger		2,090,108	
	Onion bulb	8.44	3,992	473



<b>Vegetables</b>	<b>Beans</b>	212.96	168,250	790
	<b>Broccoli</b>	58.06	54,626	941
	<b>Cabbage</b>	136.39	137,692	1,010
	<b>Carrot</b>	10.43	5,563	533
	<b>Cauliflower</b>	36.76	31,483	856
	<b>Chilli</b>	156.25	68,389	438
	<b>Cultivated Mushroom</b>		120	
	<b>Egg Plant</b>	31.97	23,572	737
	<b>Green Leaves</b>	317.39	378,998	1,194
	<b>Lady Finger</b>	6.51	3,361	516
	<b>Peas</b>	37.58	21,474	571
	<b>Potato</b>	92.52	119,372	1,290
	<b>Radish</b>	196.78	154,977	788
	<b>Tomato</b>	27.48	14,753	537
	<b>Turnip</b>	2.30	2,214	963

<b>Commodities</b>	<b>Total Trees</b>	<b>Bearing Trees</b>	<b>Qty produced[Kgs]</b>	<b>Yield(kg/ bearing tree)</b>
<b>Apple</b>	10			
<b>Areca Nut</b>	281,807	188,439	2,857,315	15
<b>Banana</b>			204,357	
<b>Guava</b>	3,547	1,328	29,673	22
<b>Jacc fruit</b>	832	373	44,590	120
<b>Litchi</b>	1,652	696	19,770	28
<b>Mandarin</b>	105,691	83,022	2,430,384	29
<b>Mango</b>	2,674	490	19,978	41
<b>Papaya</b>	770	350	3,400	10
<b>Passion fruit</b>			7,151	
<b>Peach</b>	1,220	1,157	44,697	39
<b>Pear</b>	632	515	29,396	57
<b>Persimmon</b>	50	30	2,320	77
<b>Pina Apple</b>			1,710	
<b>Plum</b>	337	247	7,790	32
<b>Pomegranate</b>	198	66	970	15

<b>Sugarcane</b>			9,628	
<b>Tree tomato</b>	601	457	4,839	11
<b>Walnut</b>	352	100	3,993	40

## Sarpang Dzongkhag

Crop Type	Crop Name	Cultivated Area(Acres)	Quantity Produced(Kgs)	Yield(Kg/acre)
Cereal	Barley	4.00	3,192	798
	Buckwheat	210.63	113,294	538
	Maize	6,586.81	6,889,803	1,046
	Millet	1,059.17	525,440	496
	Paddy	5,054.09	6,873,562	1,360
	Wheat	13.36	7,440	557
Cucurbits	Cucumber		83,277	
	Gourds		20,777	
	Pumpkin		376,515	
	Squash		168,880	
Legumes & pulses	Dal	94.43	24,812	263
	Mung bean	5.42	855	158
	Rajma bean	12.38	6,666	538
Oilseeds	Mustard	355.72	119,147	335
	Soya bean	9.14	1,970	216
	Sunflower	3.48	784	225
Roots/Tubers	Collocacia	7.33	6,183	843
	Sweet potato	8.88	4,368	492
	Tapioca	60.95	64,868	1,064
	yam	2.91	2,177	749
Spices	Cardamom	497.28	61,825	124
	Dolay Chilli		15,731	
	Garlic	18.93	16,331	863
	Ginger	349.66	652,037	1,865
	Onion bulb	33.12	25,657	775

<b>Vegetables</b>	<b>Asparagus</b>	2.20	880	400
	<b>Beans</b>	213.46	289,003	1,354
	<b>Broccoli</b>	15.04	14,350	954
	<b>Cabbage</b>	47.36	68,028	1,437
	<b>Carrot</b>	6.90	7,594	1,101
	<b>Cauliflower</b>	15.50	17,601	1,135
	<b>Chilli</b>	193.56	89,386	462
	<b>Cultivated Mushroom</b>		28	
	<b>Egg Plant</b>	22.87	19,213	840
	<b>Green Leaves</b>	135.23	194,992	1,442
	<b>Lady Finger</b>	1.58	1,388	876
	<b>Peas</b>	13.48	10,270	762
	<b>Potato</b>	96.64	77,309	800
	<b>Radish</b>	88.36	147,581	1,670
	<b>Tomato</b>	45.86	71,500	1,559
<b>Turnip</b>	2.65	2,170	819	

<b>Commodities</b>	<b>Total Trees</b>	<b>Bearing Trees</b>	<b>Qty produced[Kgs]</b>	<b>Yield(kg/ bearing tree)</b>
<b>Apple</b>	10	10	200	20
<b>Areca Nut</b>	581,226	338,392	3,512,890	10
<b>Banana</b>			337,592	
<b>Guava</b>	3,380	2,212	48,134	22
<b>Jack fruit</b>	1,153	516	76,457	148
<b>Litchi</b>	8,883	2,426	116,572	48
<b>Mandarin</b>	173,197	125,291	7,668,397	61
<b>Mango</b>	5,145	2,432	336,739	138
<b>Papaya</b>	884	791	23,273	29
<b>Passion fruit</b>			5,479	
<b>Peach</b>	633	566	42,122	74
<b>Pear</b>	828	734	125,560	171
<b>Persimmon</b>	55			

<b>Pine Apple</b>			20,645	
<b>Plum</b>	682	542	43,880	81
<b>Pomegranate</b>	118	67	1,080	16
<b>Sugarcane</b>			6,552	
<b>Tree tomato</b>	3,287	2,477	25,172	10
<b>Walnut</b>	388	-	-	

### Thimphu Dzongkhag

Crop Type	Crop Name	Cultivated Area(Acres)	Quantity Produced(Kgs)	Yield(Kg/acre)
Cereal	Barley	16.10	11,312	703
	Maize	1.75	3,800	2,171
	Paddy	1,078.41	1,833,297	1,700
	Wheat	151.15	164,895	1,091
Cucurbits	Cucumber		4,572	
	Pumpkin		6,280	
Oilseeds	Mustard	8.84	7,349	831
Spices	Garlic	1.28	1,945	1,520
	Onion bulb	4.00	1,150	288
Vegetables	Asparagus	18.80	22,104	1,176
	Beans	25.92	47,529	1,834
	Broccoli	19.42	13,360	688
	Cabbage	64.51	104,991	1,628
	Carrot	17.34	29,008	1,673
	Cauliflower	31.66	100,660	3,179
	Chilli	286.23	493,150	1,723
	Egg Plant	3.76	3,160	840
	Green Leaves	45.53	57,958	1,273
	Peas	9.91	21,190	2,138
	Potato	335.84	1,424,830	4,243
	Radish		218,964	
	Tomato		470	
Turnip		161,972		

Commodities	Total Trees	Bearing Trees	Qty produced[Kgs]	Yield(kg/bearing tree)
Apple	51,698	48,061	2,745,537	57
Peach	552	498	34,582	69
Pear	247	229	22,720	99
Persimmon	5	5	270	54
Plum	301	301	50,400	167
Walnut	658	527	61,720	117

**Trashigang Dzongkhag**

<b>Crop Type</b>	<b>Crop Name</b>	<b>Cultivated Area(Acres)</b>	<b>Quantity Produced(Kgs)</b>	<b>Yield(Kg/ acre)</b>
<b>Cereal</b>	<b>Barley</b>	202.76	156,340	771
	<b>Buckwheat</b>	530.32	322,836	609
	<b>Maize</b>	5,806.11	9,112,805	1,570
	<b>Millet</b>	108.26	90,380	835
	<b>Paddy</b>	2,786.25	3,851,089	1,382
	<b>Wheat</b>	146.10	121,425	831
<b>Cucurbits</b>	<b>Cucumber</b>		339,154	
	<b>Gourds</b>		15,702	
	<b>Pumpkin</b>		740,847	
	<b>Squash</b>		52,715	
<b>Legumes &amp;pulses</b>	<b>Ground nut</b>	84.94	91,975	1,083
	<b>Lentil</b>	2.42	2,365	977
	<b>Mung bean</b>	55.96	66,900	1,195
	<b>Rajma bean</b>	353.15	212,326	601
<b>Oilseeds</b>	<b>Mustard</b>	328.20	153,431	467
	<b>Perilla (Naam)</b>	1.31	649	495
	<b>Soya bean</b>	371.82	133,502	359
	<b>Sunflower</b>	2.60	1,250	481
<b>Roots/Tubers</b>	<b>Collocacia</b>	4.56	5,316	1,166
	<b>Sweet potato</b>	14.10	15,062	1,068
	<b>Tapioca</b>	3.12	1,838	590
<b>Spices</b>	<b>Cardamom</b>	3.40	1,070	315
	<b>Dolay Chilli</b>		5,918	
	<b>Garlic</b>	319.95	167,675	524
	<b>Ginger</b>	9.73	15,704	1,614
	<b>Onion bulb</b>	150.61	68,901	457

<b>Vegetables</b>	<b>Asparagus</b>	48.85	11,070	227
	<b>Beans</b>	310.04	188,186	607
	<b>Broccoli</b>	50.70	21,572	425
	<b>Cabbage</b>	292.44	336,984	1,152
	<b>Carrot</b>	71.16	45,748	643
	<b>Cauliflower</b>	167.48	138,501	827
	<b>Chilli</b>	1,024.17	741,497	724
	<b>Cultivated Mushroom</b>		26	
	<b>Egg Plant</b>	33.90	21,983	649
	<b>Green Leaves</b>	245.03	188,766	770
	<b>Lady Finger</b>	6.20	220	35
	<b>Peas</b>	129.53	53,117	410
	<b>Potato</b>	2,256.09	8,331,255	3,693
	<b>Radish</b>		515,391	
	<b>Tomato</b>	35.38	11,097	314
<b>Turnip</b>	8.24	10,175	1,236	

<b>Commodities</b>	<b>Total Trees</b>	<b>Bearing Trees</b>	<b>Qty produced[Kgs]</b>	<b>Yield(kg/ bearing tree)</b>
<b>Apple</b>	2,097	692	51,048	74
<b>Areca Nut</b>	20	10	50	5
<b>Banana</b>			70,805	
<b>Guava</b>	1,968	1,289	47,937	37
<b>Litchi</b>	50	10	50	5
<b>Mandarin</b>	80,675	17,731	1,317,897	74
<b>Mango</b>	2,816	848	107,853	127
<b>Papaya</b>	211	141	2,165	15
<b>Passion fruit</b>			8,469	
<b>Peach</b>	6,467	4,361	144,372	33
<b>Pear</b>	7,907	3,698	455,377	123
<b>Persimmon</b>	732	349	3,446	10
<b>Pine Apple</b>			700	



<b>Plum</b>	3,433	2,080	98,944	48
<b>Pomegranate</b>	871	525	8,626	16
<b>Sugarcane</b>			38,831	
<b>Tree tomato</b>	2,505	2,073	18,425	9
<b>Walnut</b>	5,724	2,588	104,292	40

**Trashiyangtse Dzongkhag**

<b>Crop Type</b>	<b>Crop Name</b>	<b>Cultivated Area(Acres)</b>	<b>Quantity Produced(Kgs)</b>	<b>Yield(Kg/acre)</b>
<b>Cereal</b>	<b>Barley</b>	1.70	1,564	920
	<b>Buckwheat</b>	36.00	25,813	717
	<b>Maize</b>	1,618.53	2,324,577	1,436
	<b>Millet</b>	235.82	206,525	876
	<b>Paddy</b>	2,006.89	2,483,924	1,238
	<b>Wheat</b>	17.74	14,724	830
<b>Cucurbits</b>	<b>Cucumber</b>		166,575	
	<b>Gourds</b>		100	
	<b>Pumpkin</b>		372,485	
	<b>Squash</b>		11,255	
<b>Legumes &amp;pulses</b>	<b>Ground nut</b>	50.63	35,495	701
	<b>Mung bean</b>	0.75	450	600
	<b>Rajma bean</b>	5.76	9,710	1,686
<b>Oilseeds</b>	<b>Mustard</b>	21.19	13,417	633
	<b>Soya bean</b>	102.25	37,239	364
<b>Roots/Tubers</b>	<b>Collocacia</b>	0.15	150	1,000
	<b>Sweet potato</b>	1.00	200	200
	<b>Tapioca</b>	2.76	1,344	487
<b>Spices</b>	<b>Dolay Chilli</b>	0.56	1,545	2,759
	<b>Garlic</b>	79.31	61,119	771
	<b>Ginger</b>	7.54	28,265	3,749
	<b>Onion bulb</b>	12.17	10,811	888

<b>Vegetables</b>	<b>Asparagus</b>	22.14	15,154	684
	<b>Beans</b>	42.01	53,699	1,278
	<b>Broccoli</b>	3.98	3,423	860
	<b>Cabbage</b>	163.80	170,454	1,041
	<b>Carrot</b>	15.45	13,206	855
	<b>Cauliflower</b>	37.18	73,436	1,975
	<b>Chilli</b>	761.45	580,225	762
	<b>Egg Plant</b>	9.34	8,096	867
	<b>Green Leaves</b>	34.66	26,990	779
	<b>Peas</b>	25.57	16,876	660
	<b>Potato</b>	420.75	1,593,333	3,787
	<b>Radish</b>	48.46	136,187	2,810
	<b>Tomato</b>	6.59	20,507	3,112
<b>Turnip</b>	9.20	23,350	2,538	

<b>Commodities</b>	<b>Total Trees</b>	<b>Bearing Trees</b>	<b>Qty produced[Kgs]</b>	<b>Yield(kg/ bearing tree)</b>
<b>Apple</b>	7,375	582	18,395	32
<b>Banana</b>			11,375	
<b>Guava</b>	483	398	9,515	24
<b>Jack fruit</b>	40	10	150	15
<b>Mandarin</b>	27,553	6,827	196,830	29
<b>Mango</b>	778	351	7,740	22
<b>Papaya</b>	120	110	1,515	14
<b>Passion fruit</b>			5,645	
<b>Peach</b>	4,476	3,007	87,190	29
<b>Pear</b>	3,067	364	10,469	29
<b>Persimmon</b>	515	265	5,300	20
<b>Plum</b>	919	486	17,910	37
<b>Pomegranate</b>	288	258	2,065	8
<b>Sugarcane</b>			4,570	
<b>Tree tomato</b>	1,200	986	13,661	14
<b>Walnut</b>	3,649	1,148	53,352	46

**Trongsa Dzongkhag**

<b>Crop Type</b>	<b>Crop Name</b>	<b>Cultivated Area(Acres)</b>	<b>Quantity Produced(Kgs)</b>	<b>Yield(Kg/ acre)</b>
<b>Cereal</b>	<b>Barley</b>	316.79	247,610	782
	<b>Buckwheat</b>	444.53	229,822	517
	<b>Maize</b>	956.15	990,277	1,036
	<b>Millet</b>	95.29	71,468	750
	<b>Paddy</b>	1,334.36	1,905,993	1,428
	<b>Wheat</b>	348.49	252,406	724
<b>Cucurbits</b>	<b>Cucumber</b>		39,648	
	<b>Gourds</b>		858	
	<b>Pumpkin</b>		60,271	
	<b>Squash</b>		21,775	
<b>Legumes &amp; pulses</b>	<b>Ground nut</b>	0.35	105	300
	<b>Rajma bean</b>	0.91	700	769
<b>Oilseeds</b>	<b>Mustard</b>	80.54	12,686	158
	<b>Perilla (Naam)</b>	1.98	605	306
	<b>Soya bean</b>	5.72	1,155	202
<b>Roots/Tubers</b>	<b>Sweet potato</b>	0.35	105	300
<b>Spices</b>	<b>Cardamom</b>	16.99	728	43
	<b>Dolay Chilli</b>		847	
	<b>Garlic</b>	36.85	17,834	484
	<b>Ginger</b>	7.61	7,794	1,024
	<b>Onion bulb</b>	9.07	6,739	743

<b>Vegetables</b>	<b>Asparagus</b>	1.82	252	138
	<b>Beans</b>	54.27	66,520	1,226
	<b>Broccoli</b>	20.80	34,110	1,640
	<b>Cabbage</b>	50.51	63,896	1,265
	<b>Carrot</b>	26.71	34,815	1,303
	<b>Cauliflower</b>	30.08	33,726	1,121
	<b>Chilli</b>	301.49	255,063	846
	<b>Egg Plant</b>	21.91	45,948	2,097
	<b>Green Leaves</b>	63.03	65,641	1,041
	<b>Lady Finger</b>	0.88	858	975
	<b>Peas</b>	16.47	16,056	975
	<b>Potato</b>	196.92	670,166	3,403
	<b>Radish</b>	158.91	279,935	1,762
	<b>Tomato</b>	4.45	4,982	1,120
<b>Turnip</b>	67.55	235,399	3,485	

<b>Commodities</b>	<b>Total Trees</b>	<b>Bearing Trees</b>	<b>Qty produced[Kgs]</b>	<b>Yield(kg/ bearing tree)</b>
<b>Apple</b>	599	277	2,083	8
<b>Banana</b>			22,885	
<b>Guava</b>	919	717	33,256	46
<b>Jack fruit</b>	44	22	3,520	160
<b>Litchi</b>	99	44	1,958	45
<b>Mandarin</b>	16,374	9,703	414,570	43
<b>Mango</b>	507	341	26,400	77
<b>Papaya</b>	388	286	10,648	37
<b>Passion fruit</b>			2,370	
<b>Peach</b>	708	429	8,894	21
<b>Pear</b>	721	426	9,426	22
<b>Persimmon</b>	169	158	1,968	12
<b>Pine Apple</b>			165	
<b>Plum</b>	762	435	8,212	19
<b>Pomegranate</b>	714	396	13,244	33
<b>Sugarcane</b>			2,332	
<b>Tree tomato</b>	2,126	1,566	27,637	18
<b>Walnut</b>	1,164	288	11,063	38

**Tsirang Dzongkhag**

<b>Crop Type</b>	<b>Crop Name</b>	<b>Cultivated Area(Acres)</b>	<b>Quantity Produced(Kgs)</b>	<b>Yield(Kg/ acre)</b>
<b>Cereal</b>	<b>Barley</b>	33.70	32,850	975
	<b>Buckwheat</b>	168.43	122,449	727
	<b>Maize</b>	5,416.12	5,745,034	1,061
	<b>Millet</b>	769.77	337,844	439
	<b>Paddy</b>	3,533.00	5,190,559	1,469
	<b>Wheat</b>	91.65	58,097	634
<b>Cucurbits</b>	<b>Cucumber</b>		109,089	
	<b>Gourds</b>		17,083	
	<b>Pumpkin</b>		246,504	
	<b>Squash</b>		363,877	
<b>Legumes &amp;pulses</b>	<b>Dal</b>	262.84	82,688	315
	<b>Ground nut</b>	8.72	2,558	293
	<b>Lentil</b>	2.64	735	278
	<b>Mung bean</b>	18.50	6,045	327
	<b>Rajma bean</b>	48.11	20,688	430
<b>Oilseeds</b>	<b>Mustard</b>	160.17	52,417	327
	<b>Niger (Filingi)</b>	3.60	900	250
	<b>Perilla (Naam)</b>	2.87	558	194
	<b>Soya bean</b>	31.27	5,873	188
	<b>Sunflower</b>	6.26	1,218	195
<b>Roots/Tubers</b>	<b>Collocacia</b>	26.62	14,033	527
	<b>Sweet potato</b>	9.54	7,303	766
	<b>Tapioca</b>	60.82	24,977	411
	<b>yam</b>	20.95	13,735	656
<b>Spices</b>	<b>Cardamom</b>	25.72	4,565	177
	<b>Dolay Chilli</b>		42,597	
	<b>Garlic</b>	114.03	11,319	99
	<b>Ginger</b>	151.49	107,655	711
	<b>Onion bulb</b>	18.76	13,962	744

<b>Vegetables</b>	<b>Asparagus</b>	21.04	6,202	295
	<b>Beans</b>	271.59	183,989	677
	<b>Broccoli</b>	36.06	33,633	933
	<b>Cabbage</b>	168.69	256,987	1,523
	<b>Carrot</b>	6.21	8,233	1,326
	<b>Cauliflower</b>	44.74	33,720	754
	<b>Chilli</b>	195.82	122,692	627
	<b>Egg Plant</b>	16.54	9,894	598
	<b>Green Leaves</b>	160.12	217,151	1,356
	<b>Lady Finger</b>	8.03	898	112
	<b>Peas</b>	42.11	17,325	411
	<b>Potato</b>	282.67	319,815	1,131
	<b>Radish</b>	154.66	165,558	1,070
	<b>Tomato</b>	25.01	11,015	440
<b>Turnip</b>	23.00	8,784	382	

<b>Commodities</b>	<b>Total Trees</b>	<b>Bearing Trees</b>	<b>Qty produced[Kgs]</b>	<b>Yield(kg/ bearing tree)</b>
<b>Apple</b>	173	11	160	15
<b>Areca Nut</b>	99	42	600	14
<b>Banana</b>			321,521	
<b>Guava</b>	2,981	2,452	75,401	31
<b>Jack fruit</b>	338	126	11,240	89
<b>Litchi</b>	385			
<b>Mandarin</b>	164,437	111,416	9,763,508	88
<b>Mango</b>	2,069	398	18,500	46
<b>Papaya</b>	1,739	1,088	25,684	24
<b>Passion fruit</b>			33,790	
<b>Peach</b>	1,196	938	103,911	111
<b>Pear</b>	2,713	1,772	712,670	402
<b>Persimmon</b>	58	48	350	7
<b>Pine Apple</b>			72	
<b>Plum</b>	811	620	105,516	170
<b>Pomegranate</b>	764	504	6,722	13
<b>Sugarcane</b>			36,262	
<b>Tree tomato</b>	3,056	2,564	24,753	10
<b>Walnut</b>	474			

**Wangdue Dzongkhag**

<b>Crop Type</b>	<b>Crop Name</b>	<b>Cultivated Area(Acres)</b>	<b>Quantity Produced(Kgs)</b>	<b>Yield(Kg/ acre)</b>
<b>Cereal</b>	<b>Barley</b>	349.72	268,007	766
	<b>Buckwheat</b>	423.89	233,760	551
	<b>Maize</b>	368.56	430,087	1,167
	<b>Millet</b>	7.75	5,200	671
	<b>Paddy</b>	4,207.59	6,641,180	1,578
	<b>Wheat</b>	1,057.39	939,005	888
<b>Cucurbits</b>	<b>Cucumber</b>		108,943	
	<b>Gourds</b>		15,115	
	<b>Pumpkin</b>		120,571	
	<b>Squash</b>		17,565	
<b>Oilseeds</b>	<b>Mustard</b>	121.28	38,631	319
	<b>Perilla (Naam)</b>	0.84	212	253
	<b>Soya bean</b>	0.60	420	700
<b>Roots/Tubers</b>	<b>Sweet potato</b>	1.30	2,705	2,081
	<b>Tapioca</b>	0.20	300	1,500
<b>Spices</b>	<b>Corainder</b>		1,905	
	<b>Dolay Chilli</b>		878	
	<b>Garlic</b>	56.44	44,860	795
	<b>Ginger</b>	10.75	17,290	1,608
	<b>Onion bulb</b>	39.65	30,781	776



<b>Vegetables</b>	<b>Asparagus</b>	31.26	6,114	196
	<b>Beans</b>	131.56	130,021	988
	<b>Broccoli</b>	13.59	21,328	1,569
	<b>Cabbage</b>	169.04	136,938	810
	<b>Carrot</b>	26.25	47,001	1,791
	<b>Cauliflower</b>	18.80	41,480	2,206
	<b>Chilli</b>	397.66	847,965	2,132
	<b>Cultivated Mushroom</b>		24	
	<b>Egg Plant</b>	31.27	57,741	1,847
	<b>Green Leaves</b>	80.04	75,891	948
	<b>Lady Finger</b>	3.60	2,400	667
	<b>Peas</b>	20.50	11,951	583
	<b>Potato</b>	1,599.51	7,821,595	4,890
	<b>Radish</b>	265.51	716,215	2,698
	<b>Tomato</b>	12.70	22,954	1,807
<b>Turnip</b>		2,563,875		

<b>Commodities</b>	<b>Total Trees</b>	<b>Bearing Trees</b>	<b>Qty produced[Kgs]</b>	<b>Yield(kg/ bearing tree)</b>
<b>Apple</b>	1,876	1,224	13,131	11
<b>Banana</b>			16,830	
<b>Guava</b>	1,003	680	54,650	80
<b>Mandarin</b>	10,606	4,057	104,085	26
<b>Mango</b>	78	24	14,424	601
<b>Passion fruit</b>			2,194	
<b>Peach</b>	2,180	1,143	77,211	68
<b>Pear</b>	2,071	880	51,065	58
<b>Persimmon</b>	1,182	899	62,383	69
<b>Plum</b>	492	330	18,905	57
<b>Pomegranate</b>	458	261	7,790	30
<b>Sugarcane</b>			4,460	
<b>Tree tomato</b>	2,207	1,866	30,017	16
<b>Walnut</b>	3,252	97	2,015	21

**Zhemgang Dzongkhag**

<b>Crop Type</b>	<b>Crop Name</b>	<b>Cultivated Area(Acres)</b>	<b>Quantity Produced(Kgs)</b>	<b>Yield(Kg/ acre)</b>
<b>Cereal</b>	<b>Barley</b>	63.20	39,184	620
	<b>Buckwheat</b>	400.30	265,799	664
	<b>Maize</b>	4,936.07	5,418,890	1,098
	<b>Millet</b>	302.50	124,570	412
	<b>Paddy</b>	1,317.22	1,808,693	1,373
	<b>Wheat</b>	323.08	195,900	606
<b>Cucurbits</b>	<b>Cucumber</b>		69,035	
	<b>Gourds</b>		5,940	
	<b>Pumpkin</b>		120,750	
	<b>Squash</b>		9,740	
<b>Legumes &amp;pulses</b>	<b>Ground nut</b>	0.70	500	714
	<b>Mung bean</b>	38.00	7,320	193
	<b>Rajma bean</b>	4.60	3,800	826
<b>Oilseeds</b>	<b>Mustard</b>	112.10	15,464	138
	<b>Perilla (Naam)</b>	23.74	2,975	125
	<b>Soya bean</b>	18.50	4,250	230
<b>Roots/Tubers</b>	<b>Collocacia</b>	13.41	15,460	1,153
	<b>Sweet potato</b>	5.04	6,870	1,363
	<b>Tapioca</b>	20.61	28,440	1,380
	<b>yam</b>	0.56	700	1,250
<b>Spices</b>	<b>Cardamom</b>	3.50	280	80
	<b>Corainder</b>		220	
	<b>Dolay Chilli</b>		12,376	
	<b>Garlic</b>	21.88	24,255	1,109
	<b>Ginger</b>	31.41	30,085	958
	<b>Onion bulb</b>	11.52	11,535	1,001

<b>Vegetables</b>	<b>Beans</b>	141.78	185,365	1,307
	<b>Broccoli</b>	10.31	13,360	1,296
	<b>Cabbage</b>	180.52	114,980	637
	<b>Carrot</b>	5.43	6,730	1,239
	<b>Cauliflower</b>	30.57	39,208	1,283
	<b>Chilli</b>	429.61	347,859	810
	<b>Cultivated Mushroom</b>		2,800	
	<b>Egg Plant</b>	25.20	33,330	1,323
	<b>Green Leaves</b>	48.76	83,295	1,708
	<b>Lady Finger</b>	1.76	2,560	1,455
	<b>Peas</b>	8.64	6,730	779
	<b>Potato</b>	202.90	264,735	1,305
	<b>Radish</b>	109.04	185,640	1,702
	<b>Tomato</b>	11.41	13,845	1,213
<b>Turnip</b>	3.30	4,290	1,300	

<b>Commodities</b>	<b>Total Trees</b>	<b>Bearing Trees</b>	<b>Qty produced[Kgs]</b>	<b>Yield(kg/ bearing tree)</b>
<b>Apple</b>	1,660	418	21,800	52
<b>Areca Nut</b>	1,703	805	9,665	12
<b>Avacado</b>	140	28	1,120	40
<b>Banana</b>			59,938	
<b>Guava</b>	4,212	2,344	36,295	15
<b>Jack fruit</b>	909	377	36,790	98
<b>Litchi</b>	282	172	5,250	31
<b>Mandarin</b>	166,941	64,919	2,565,420	40
<b>Mango</b>	3,002	527	12,106	23
<b>Papaya</b>	138	58	1,120	19
<b>Passion fruit</b>			7,960	
<b>Peach</b>	1,403	1,032	45,452	44
<b>Pear</b>	614	292	13,000	45
<b>Persimmon</b>	128	68	2,600	38
<b>Pine Apple</b>			1,800	
<b>Plum</b>	581	389	17,130	44

<b>Pomegranate</b>	60	30	2,000	67
<b>Sugarcane</b>			8,160	
<b>Tree tomato</b>	798	554	11,660	21
<b>Walnut</b>	886	494	17,600	36